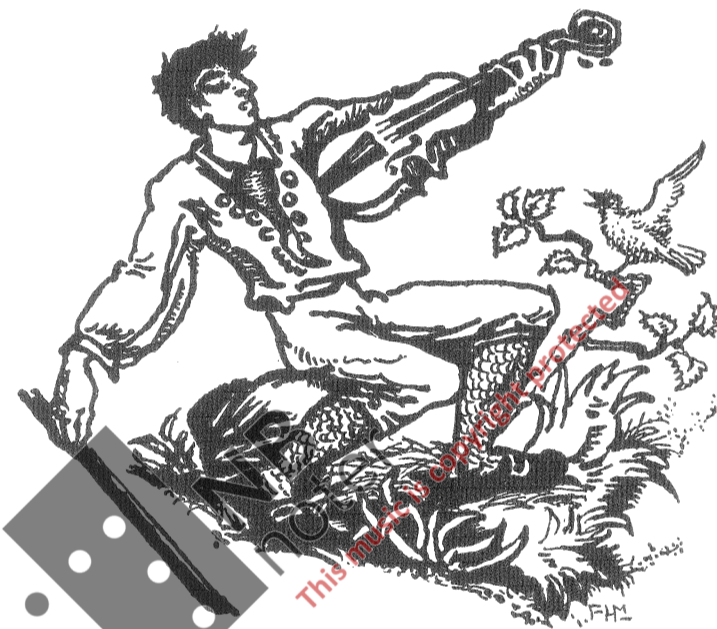
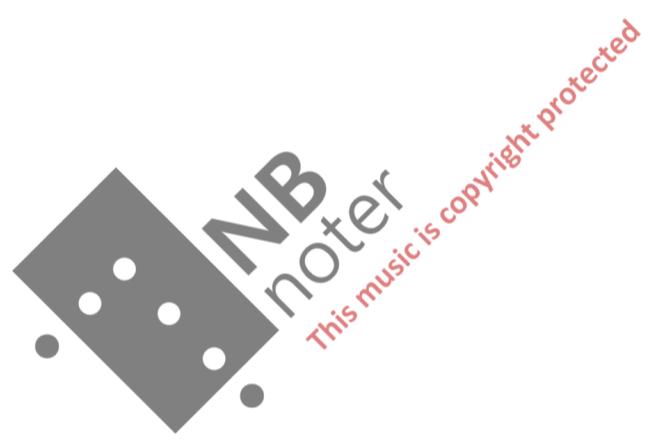


PARTITUR.

Vill-Guri.



ANNE-MARIE ØRBECK

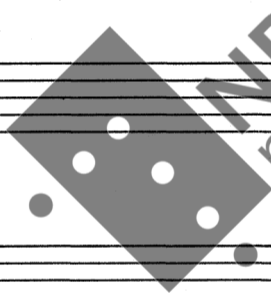


Partitür

Vill-Guri
(For Jonsson)

Anne-Marie Olbeck

Uroppfört 8 mars 1963



NB
noter

This music is copyright protected



80-86

Vill-Guri (Tor Jonsson)

Axel-Laurie Orbeck.

Animato

Fl.

Kl 1
i A 2

Fag 2

Klorn 1
i F 2

Harpe

Celista

Voce

Fiolin I

Fiolin II

Br.

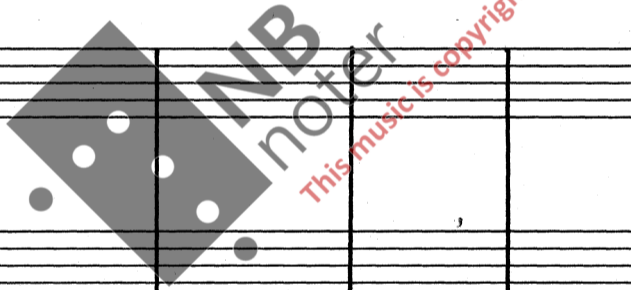
Bello

Kb.

espressivo

1.

E og D 80-86



Fl
 Kl
 Fag
 Horn
 Trump
 Bel.
 Tromp

Temp.

Vill-Guri dan-se med fe - la syng dan-se i lund og dan - se i byng! Dans o-ver fjel-let i



pizz

pizz 2

Fl.

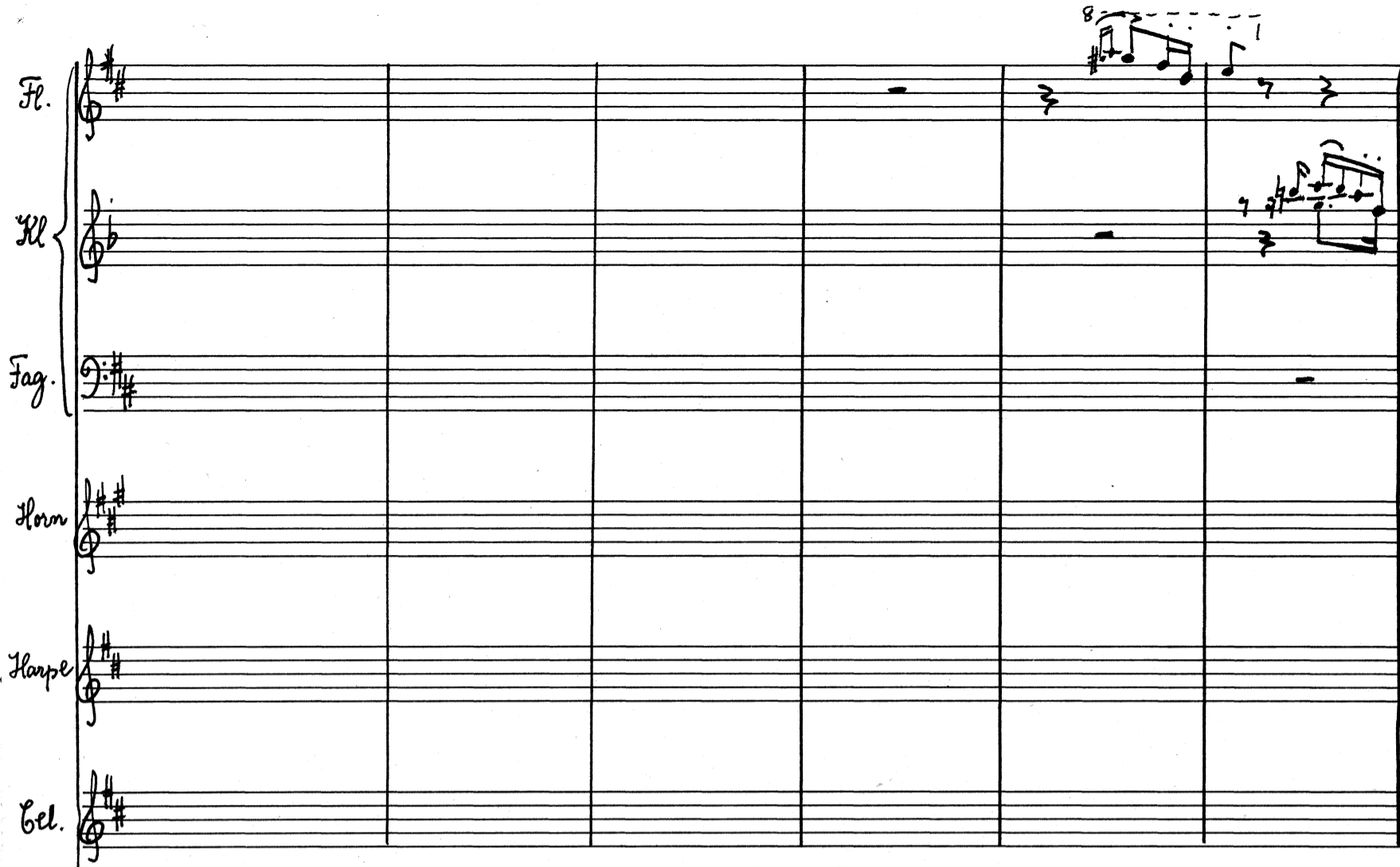
Kl.

Fag.

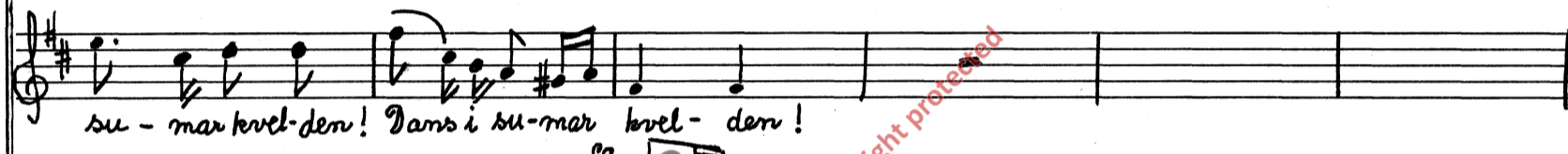
Horn

Harpe

Cell.



su - mar kvæl - den! Dans i su - mar kvæl - den!



ff
divisi



1

FL
 KL
 Fag
 Horn
 Klarinet
 Trubba

1

p dolce
 Vill-buri, glöym di-me hjar-te-sår, du som har sol-gyldt. glit-ter i hår!

rit.
arco
arco
marcato
arco
p
arco
 4
 1

2

Fi

Kl

Fag

Horn

Harpe

Bel

espressivo

poco rit

Glöym du er fat-tigi dem-me kvæl-dem! Glöym i dem-me kvæl-dem! Glöym du er heim-laus þú

pizz

pizz

5

2

③

Handwritten musical score for strings and woodwinds. The score includes staves for Fløyte (Flute), Horn, Fagot (Bassoon), and Cel (Cello). The Fløyte and Horn parts feature melodic lines with slurs and dynamics. The Fagot part consists of chords with dynamic markings. The Cel part has a rhythmic accompaniment.

③ a tempo

Vocal line with lyrics: *fra-mand gard! Gløym bort alt vondt som er og som var! Skir-su-mar-nat-ta er mi og di.* The music includes dynamic markings: *p*, *cresc*, and *f*. A wavy line above the final notes indicates a deceleration or fermata.

Handwritten musical score for strings. The score includes staves for Violin I, Violin II, Viola, Fagot (Bassoon), and Cello. The Fagot and Cello parts have a rhythmic accompaniment with dynamic markings *cresc.* and *pizz* (pizzicato).

6

③

WH. Nr. 31. E. 12

Fl.

Kl.

Fag.

Horn

Harp

Bcl.

espress.

mf marc.

pizz

4

FL
 KL
 F
 J
 Harp
 Bel
 Timp

Li-vet du fekk er som sol-glytt i sky med skod-de og gri-man-de grå-ver på my. Dams o-ver fjel-let i



4

Fl. Kl. Fag. Horn. Harpe. Cel.

su-mar kveldem! 0-ver fjel-let i sū

f (5) *Rit. e dim. poco*

P

9 *f* (5)

Handwritten musical score for a symphony orchestra, featuring parts for Flute (Fl.), Clarinet (Cl.), Bassoon (Fag.), Harp, Cello (Cel.), Double Bass (Kontrabaß), Violin I (Vln. I), Violin II (Vln. II), Viola, and Violoncello (Vcllo). The score is in G major (one sharp) and 3/4 time. The tempo is marked *Lento* throughout. The key signature is G major (one sharp).

Key markings and performance instructions include:

- Lento* (Tempo)
- pp* (pianissimo)
- 4C dūr* (4th C string, duration)
- 8-7* (Fingering)
- un poco* (a little)
- mar - kel - dem.* (Lyrics)
- Timp.* (Timpani)
- arco* (arco)
- solo espressivo* (solo expressive)
- 10* (Fingering)

The score includes various musical notations such as slurs, ties, and dynamic markings. A large watermark "Noter" is visible across the center of the page, along with the text "This music is copyright protected".