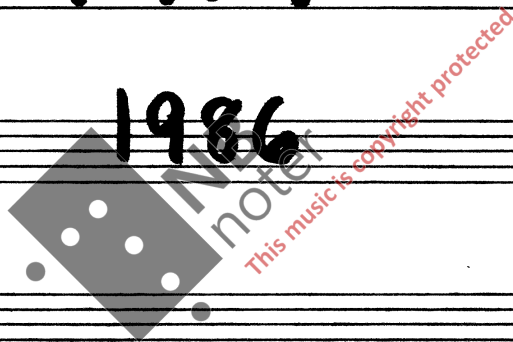


Vetil Ve:

MESSINGKVINTETT

nr. 1

1986



Bestillingsverk Nordnorsk Messingkvintett



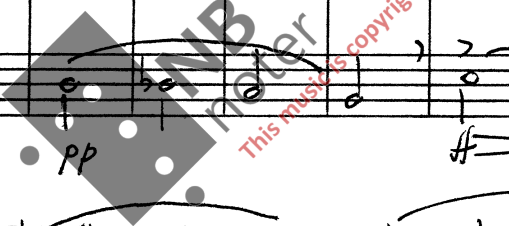
Andante ♩ = 76

I

2

Handwritten musical score for the first system, measures 1-4. The score includes parts for Tromba in B (I and II), Corno in F, Tromba, and Tubi. Dynamics range from *ff* to *pp*. The key signature has one sharp (F#) and the time signature is 2/4. The music features melodic lines with slurs and accents, and dynamic markings such as *ff*, *mf*, *pp*, and *p*.

Handwritten musical score for the second system, measures 5-8. The score includes parts for Tr. (I and II), Cor., Tromba, and Tubi. Dynamics range from *mf* to *ff*. The key signature has one sharp (F#) and the time signature is 2/4. The music continues with melodic lines and dynamic markings such as *mf*, *f*, and *ff*. A circled number '15' is written at the beginning of the system.



ff

28

mf cresc. ff

mf cresc. ff

mf cresc. ff

mf cresc. ff

mf cresc. ff

34

mf p

mf p

mf p

mf p

mf p

43

6/8 d. = d

Tr. I

Tr. II

Cor.

Trb.

Tb.

pp

p

mf

c.f.

50

Tr. I

Tr. II

Cor.

Trb.

Tb.

pause.

55

Tr. I
Tr. II
Cor.
T1b
T2b

f *p* *mf*

63

Tr. I
Tr.
Tr. II
Cor.
T1b
T2b

f *p* *mf cresc.*

72

Tr. I

Tr. II

Cor.

Trb.

Tb.

f

f

f

f

f

f

This music is copyright protected

NB noter

75

Tr. I

Tr. II

Cor.

Trb.

Tb.

p ens.

p ens.

p ens.

p ens.

p ens.

p ens.

p ens.

81

Handwritten musical score for measures 81-84. The score is written for five staves: I (Violin I), II (Violin II), Cor. (Cor Anglais), Trb. (Trumpet), and Tb. (Tuba). The key signature has one flat (B-flat). The tempo is marked 'f' (forte). The music features a rhythmic pattern of eighth and sixteenth notes with various articulations like accents and slurs. The Trb. part has a series of eighth notes with accents, and the Tb. part has a similar pattern with accents.

85

Handwritten musical score for measures 85-88. The score is written for five staves: I (Violin I), Tr. (Trumpet), II (Violin II), Cor. (Cor Anglais), Trb. (Trumpet), and Tb. (Tuba). The key signature has one flat (B-flat). The tempo is marked 'mf' (mezzo-forte). The music features a rhythmic pattern of eighth and sixteenth notes with various articulations like accents and slurs. The Tr. part has a series of eighth notes with accents, and the Tb. part has a similar pattern with accents.

Espressivo

II

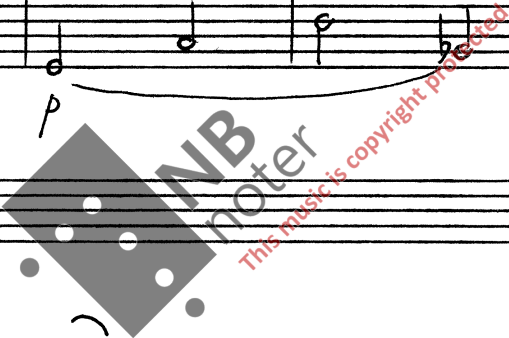
4/4 ♩ = 60

Tromba in B

Corno in F

Trombone

Tuba



⑥

Tr.

Cor.

Trb.

Tb.

⑩

Tr. I
Tr. II
Cor.
Trb.
Tb.

f

mf

This block contains a musical score for measures 10 through 14. It features five staves: Tr. I, Tr. II, Cor., Trb., and Tb. The music is in a key with one flat (B-flat major or D minor) and a 4/4 time signature. Measures 10-11 show a melodic line in Tr. I and Tr. II with a dynamic marking of *f*. Measures 12-14 continue the melodic development with various dynamics including *f* and *mf*. The score includes various musical notations such as slurs, ties, and dynamic markings.

⑮

Tr. I
Tr. II
Cor.
Trb.
Tb.

mf

This block contains a musical score for measures 15 through 19. It features five staves: Tr. I, Tr. II, Cor., Trb., and Tb. The music continues in the same key and time signature. Measures 15-16 show a melodic line in Tr. I and Tr. II with a dynamic marking of *mf*. Measures 17-19 continue the melodic development with various dynamics including *mf*. The score includes various musical notations such as slurs, ties, and dynamic markings.

20

Tr. I
Tr. II
Cor.
Trb.
Tb.

This system contains five staves of music for measures 20 through 23. The instruments are Trumpet I, Trumpet II, Cor Anglais, Trombone, and Tuba. The music features complex rhythmic patterns with many beamed notes and slurs. A watermark for 'NB noter' is visible across the middle of the system.

24

Tr. I
Tr. II
Cor.
Trb.
Tb.

This system contains five staves of music for measures 24 through 27. The instruments are Trumpet I, Trumpet II, Cor Anglais, Trombone, and Tuba. The music is more sparse than the previous system, with fewer notes and some rests. Dynamic markings include *p* (piano) and *mf esprtu.* (mezzo-forte with spirit). A watermark for 'NB noter' is visible across the middle of the system.

29

Tr. I

Tr. II

Cw

Tdr.

Tb.

33

Tr. I

Tr. II

Cw

Tdr.

Tb.

37

Tr. I
Tr. II
Cor.
Trb.
Tb.

f

This musical score covers measures 37 to 40. It features five staves: Tr. I, Tr. II, Cor., Trb., and Tb. The music is written in treble clef for the first three staves and bass clef for the last two. Measure 37 is marked with a circled '37' and a first ending bracket. The score includes various musical notations such as eighth notes, quarter notes, and triplets. Dynamic markings include a forte (*f*) crescendo starting in measure 38. A large watermark 'NB noter' is overlaid on the score.

41

Tr. I
Tr. II
Cor.
Trb.
Tb.

mf

This musical score covers measures 41 to 44. It features five staves: Tr. I, Tr. II, Cor., Trb., and Tb. The music is written in treble clef for the first three staves and bass clef for the last two. Measure 41 is marked with a circled '41' and a first ending bracket. The score includes various musical notations such as eighth notes, quarter notes, and triplets. Dynamic markings include a mezzo-forte (*mf*) crescendo starting in measure 42. A large watermark 'NB noter' is overlaid on the score.

45

poco rit.

Tr. I *poco rit.*

Tr. II *poco rit.*

Cor. *poco rit.*

Tru. *poco rit.*

Tb. *poco rit.*

p

50

a tempo

Tr. I *mf*

Tr. II *a tempo*
mf

Cor. *a tempo*
mf

Tru. *a tempo*
mf

Tb. *a tempo*
mf

55

Tr. I

Tr. II

Cor.

Trb.

Tb.

59

Tr. I

Tr. II

Cor.

Trb.

Tb.

The page contains ten horizontal musical staves, each consisting of five lines. The staves are arranged vertically down the page. A watermark is centered on the page, featuring a grey square with four white dots, the text 'NB noter' in a bold, sans-serif font, and the phrase 'This music is copyright protected' in a smaller, red, italicized font.

Vivace

III

6/8 d. = 96

I Tromba in B II

Corno in F

Trombone

Tuba

8) Tr. I II

Cor.

Trb.

Tb.

14

6/8

f *f* *f* *f* *f*

20

5/8

mf *f* *mf* *f* *mf* *f*

35

5/8

6/8

mf

This musical system contains measures 35, 36, and 37. It features five staves: I (Violin I), II (Violin II), Cor. (Cor Anglais), Trb. (Trumpet), and Tb. (Tuba). The key signature has one sharp (F#). Measure 35 is in 5/8 time, measure 36 is in 5/8 time, and measure 37 is in 6/8 time. All parts are marked *mf*. The notation includes various rhythmic values, slurs, and dynamic markings.

39

5/8

f

mf

f

This musical system contains measures 39, 40, and 41. It features five staves: I (Violin I), Tr. (Trumpet), II (Violin II), Cor. (Cor Anglais), Trb. (Trumpet), and Tb. (Tuba). The key signature has one sharp (F#). Measure 39 is in 5/8 time, measure 40 is in 5/8 time, and measure 41 is in 5/8 time. The dynamics vary: *f* in measure 39, *mf* in measure 40, and *f* in measure 41. The notation includes slurs, accents, and dynamic markings.

46

Handwritten musical score for system 46, measures 1-5. The score is written on five staves. The key signature has one flat. The time signature changes from 5/8 to 6/8 to 3/8. Dynamics include *f*, *mf*, and *f*. The notation includes various rhythmic patterns and articulation marks.

52

Handwritten musical score for system 52, measures 1-5. The score is written on five staves. The key signature has one flat. The time signature changes from 3/8 to 6/8 to 3/8 to 6/8 to 5/8 to 6/8. Dynamics include *f*, *p*, *mf*, and *f*. The notation includes various rhythmic patterns and articulation marks.

(59) $\frac{6}{8}$ *b*

p cresc.
p cresc.
p cresc.
p cresc.
p cresc.

(64) $\frac{5}{8}$ $\frac{6}{8}$ *b*

f
f
f
f
f

p
p
p
p
p

mf cresc.
mf cresc.
mf cresc.
mf cresc.
mf cresc.

70

Musical score for system 70, measures 70-76. The score consists of five staves. The first staff is in treble clef with a key signature of one sharp (F#) and a common time signature. The second and third staves are in treble clef with a key signature of one sharp (F#). The fourth staff is in bass clef with a key signature of one sharp (F#). The fifth staff is in bass clef with a key signature of one sharp (F#). The music is characterized by complex rhythmic patterns, including sixteenth and thirty-second notes, and rests. Dynamic markings include *p* (piano), *f* (forte), and *mf* (mezzo-forte). A watermark for 'NB noter' is visible over the score.

77

Musical score for system 77, measures 77-83. The score consists of five staves. The first staff is in treble clef with a key signature of one flat (Bb) and a common time signature. The second and third staves are in treble clef with a key signature of one flat (Bb). The fourth staff is in bass clef with a key signature of one flat (Bb). The fifth staff is in bass clef with a key signature of one flat (Bb). The music is characterized by complex rhythmic patterns, including sixteenth and thirty-second notes, and rests. Dynamic markings include *f* (forte), *mf* (mezzo-forte), and *p* (piano). A watermark for 'NB noter' is visible over the score.

84

5/8 6/8

93

NB noter
This music is copyright protected

101

Handwritten musical score for system 101, consisting of five staves. The notation includes various notes, rests, and accidentals, with some notes beamed together and others marked with accents. The score is written in a standard musical notation style.



111

Handwritten musical score for system 111, consisting of five staves. The notation includes various notes, rests, and accidentals, with dynamic markings such as *f* and *mf*. The score is written in a standard musical notation style.

119

Musical score for exercise 119, consisting of five staves of music in a single system. The notation includes treble and bass clefs, various note values, and rests.

124

Musical score for exercise 124, consisting of five staves of music in a single system. The notation includes treble and bass clefs, various note values, rests, and dynamic markings like "cres." and "f". There are also some handwritten annotations like "5" and "6/8 e."