

B e n t e L e i k n e s T h o r s e n

Lush darkness - glaring light

(because the loudmouthed forgot the beauty of a simple tone)

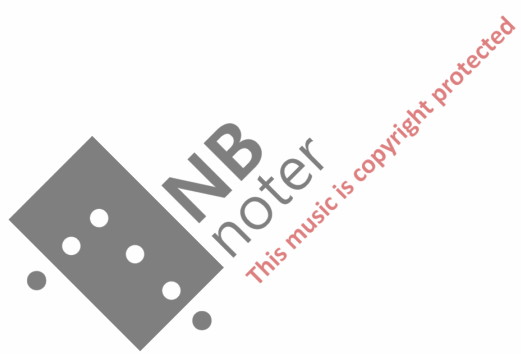
B a s s t r o m b o n e



This music is copyright protected

2021

commissioned by Clare Farr
with support from
Det norske komponistfond



PERFORMANCE NOTES

GLISSANDI

Glissandi are always to be performed as evenly as possible.

HARMONIC GLISSANDO



Perform a slide glissando at the same time as you move quickly up through the overtone series. The result should be a quick and somewhat random succession of tones.

When position/starting tone is **not** given, the performer is free to decide where to start, and the important aspect is the top note.

SINGING WHILE PLAYING

This piece is written for a female voice. Men are encouraged to play the piece nonetheless, and should transpose the pitches down one octave (do **not** sing in falsetto).

SIGHING

The sighs are meant to be small outbursts of frustration and resignation. It sounds more like a real sigh if it starts with a short intake of breath.



Lush darkness - glaring light

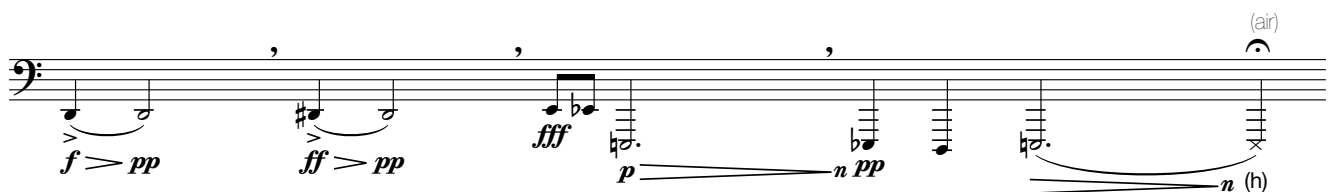
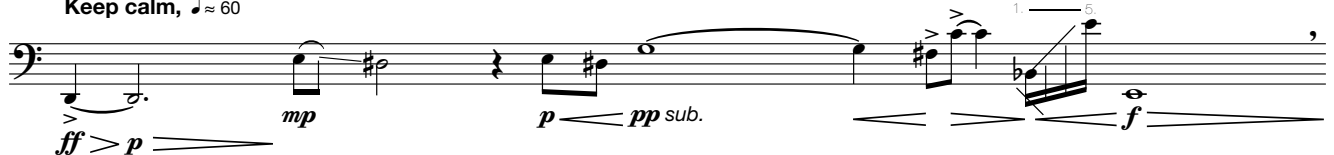
(because the loudmouthed forgot the beauty of a simple tone)

for Clare

Bente Leiknes Thorsen

Keep calm, ♩ ≈ 60

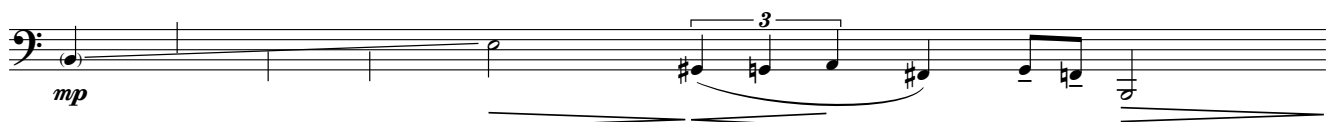
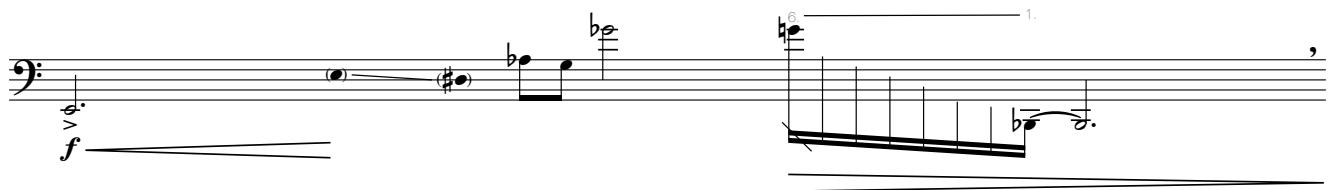
sing in inst. *ff*



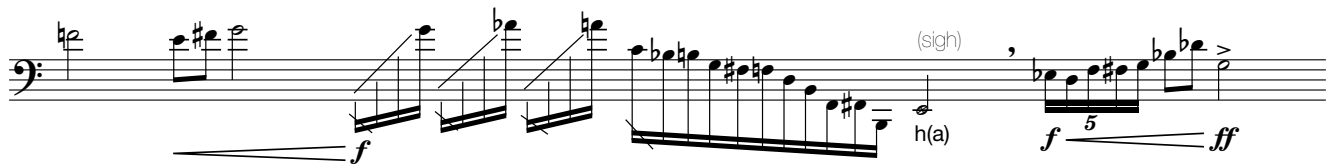
Quicker (in a rush)



Tempo 1 (♩ ≈ 60)



Tempo ♩ = 90 for the win!



Slow / rubato (sweet)

A tempo (for the win)



Keep calm, ♩ = 60

(sing in instr.)

