

# TWO INSTRUMENTALE

# MADRIGALER

# SINFONIETTA

## TWO INSTRUMENTAL MADRIGALS for SINFONIETTA

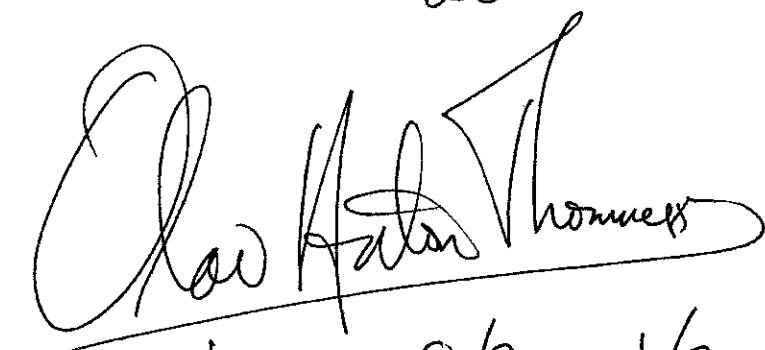
FLUTE/ALTO FLUTE  
OBOE/ENGLISH HORN  
CLARINET/BASS CLARINET  
BASSOON

HORN  
TRUMPET  
TROMBONE  
TUBA

PERCUSSION: CHIMES  
BASS DRUM  
SNARE DRUM  
TAMBOURINE  
GONG

VIOLIN  
VIOLA  
VIOLONCELLO  
CONTRABASS

— UNDERHOLDNINGSMUSIKK for TRETTEEN —  
BASERT på MADRIGALER VI og XIII fra  
BOK VI av DON CARLO di GESUALDO's MADRIGALER  
fra 1613

aw  
  
VINDEREN 8/90 - 1/91



♩=60 FT. TEMPO I

Handwritten musical score for the first system, featuring the following instruments and parts:

- AcF:** Acoustic Fiddle
- EngH:** English Horn
- 3s Kl:** 3rd Clarinet
- Fgt:** Flute
- HRN:** Horn
- TRPT:** Trumpet
- TRONB:** Trombone
- Tuba:** Tuba
- CHIMES:** Chimes
- Vln:** Violin (Non Vib.)
- Vla:** Viola
- Cello:** Cello
- KB:** Keyboard

Key markings include *pp*, *Consolo*, *Non Vib.*, *ola punta*, and *arco*. A circled number '5' is present in the Flute part.

Handwritten musical score for the second system, featuring the following instruments and parts:

- AcF:** Acoustic Fiddle
- EngH:** English Horn
- Bs Kl:** Bass Clarinet
- Fgt:** Flute
- H:** Harp
- T:** Tenor
- TB:** Trombone
- Tuba:** Tuba
- CHIMES:** Chimes
- Vln:** Violin
- Vla:** Viola
- Cello:** Cello
- KB:** Keyboard

Key markings include *p*, *pp*, *l.v.*, *Senza Sord.*, and *arco*. A circled number '10' is present at the bottom of the system.



Handwritten musical score for the first system, measures 29-30. The score includes staves for Flute (AF), Horns (EH), Bassoon (Bs Kl), Bassoon (Bw), Horn (HRN), Trumpet (TRPT), Trombone (TRONB), Tuba (TUBA), Bassoon (Bs Kl), Violin (VLN), Viola (VLA), Cello (CELLO), and Double Bass (KB). The music features complex rhythmic patterns and dynamic markings such as *pp*, *p*, and *sf*. A circled measure number '30' is present in the HRN staff.

Handwritten musical score for the second system, measures 31-35. The score includes staves for Horn (EH), Bassoon (Bs Kl), Horn (H), Trumpet (T), Trombone (TB), Tuba (TUBA), Bassoon (Bs Kl), Violin (VLN), Viola (VLA), Cello (CELLO), and Double Bass (KB). The music features complex rhythmic patterns and dynamic markings such as *f*, *fp*, and *sf*. A circled measure number '35' is present in the VLN staff.

3

Handwritten musical score for page 40. The score includes staves for Flute (AF), Horn (EH), Bassoon (Bs Kl), Clarinet (FgT), Horn (HRN), Trumpet (TRPT), Trombone (TRONB), Tuba (TUBA), Gong (GONG), Bass Drum (Bs Dr), Violin (VLN), Viola (VLA), Cello (CELLO), and Double Bass (KB). The music features complex rhythmic patterns, including sixteenth-note runs in the woodwinds and strings. A box containing the number '40' is located in the upper right quadrant of the page.

Handwritten musical score for page 45. The score includes staves for Flute (AF), Horn (EH), Bassoon (Bs Kl), Clarinet (FgT), Horn (H), Trumpet (T), Trombone (TB), Tuba (TUBA), Bass Drum (Bs Dr), Violin (VLN), Viola (VLA), Cello (CELLO), and Double Bass (KB). The music continues with complex rhythmic patterns and dynamic markings such as *f*, *fp*, and *mf*. A box containing the number '45' is located in the lower right quadrant of the page.

Handwritten musical score for the first system, measures 48-51. The instruments listed on the left are:

- Bs Kl (Bassoon)
- HRN (Horn)
- TRPT (Trumpet)
- TRONB (Trumpet)
- TURB (Trombone)
- GONG (Gong)
- BSD (Bass Drum)
- VLN (Violin)
- VLA (Viola)
- CELLO (Cello)
- KB (Kb) (Double Bass)

Measure 50 is boxed. The tempo marking  $\text{♩} = \text{♩} \cdot \frac{12}{8}$  is present. Dynamics include *p*, *mf*, and *pp*. A watermark "MIB noter" is visible across the score.

Handwritten musical score for the second system, measures 52-55. The instruments listed on the left are:

- AFI (Alto Flute)
- EH (English Horn)
- Bs Kl (Bassoon)
- FRT (Fagot)
- H (Horn)
- T (Trumpet)
- TB (Trombone)
- TBA (Tuba)
- CHIMES (Chimes)
- VLN (Violin)
- VLA (Viola)
- CELLO (Cello)
- KB (Kb) (Double Bass)

Measure 55 is boxed. The tempo marking  $\text{♩} = \text{♩} \cdot \frac{12}{8}$  *Più Mosso* is present. Dynamics include *pp*, *p*, and *sub*. The instruction "SENZA SOLO" is written above the strings. A watermark "MIB noter" is visible across the score.

Handwritten musical score for the first system, featuring the following instruments:

- AE (Alto Saxophone)
- EH (English Horn)
- Bs Kl (Bass Clarinet)
- BSN (Bassoon)
- HRN (Horn)
- TRPT (Trumpet)
- TRCMB (Trumpet in C)
- TUBA (Tuba)
- STRINGS (String Ensemble)
- VLN (Violin)
- VLA (Viola)
- CELLO (Cello)
- KB (Double Bass)

Key markings include *LEGGIERO*, *mp*, *f*, and *p*. The score is written in a complex key signature with multiple sharps and flats.

Handwritten musical score for the second system, featuring the following instruments:

- EH (English Horn)
- Bs Kl (Bass Clarinet)
- BSN (Bassoon)
- H (Horn)
- T (Trumpet)
- Tb (Tuba)
- TBA (Tuba/Euphonium)
- STRINGS (String Ensemble)
- Vln (Violin)
- Vla (Viola)
- CELLO (Cello)
- KB (Double Bass)

Key markings include *mp*, *f*, *p*, and *priz*. The score continues the complex key signature from the first system.



Handwritten musical score for measures 65-69. The score includes staves for:

- EH (English Horn)
- Bs KL (Bass Clarinet)
- Fgt (Fagott)
- HRN (Horn)
- TRPT (Trumpet)
- TRONB (Trombone)
- TUBA (Tuba)
- CHMCS (Cymbals)
- VLN (Violin)
- VLA (Viola)
- CELO (Cello)
- KB (Kontrabaß)

Measure 65 is marked with a box containing the number 65. The score features various musical notations including notes, rests, and dynamic markings such as *p* (piano).

Handwritten musical score for measures 70-74. The score includes staves for:

- EH (English Horn)
- Bs KL (Bass Clarinet)
- Fgt (Fagott)
- H (Horn)
- T (Trompete)
- Tb (Trombone)
- Tuba
- CHMCS (Cymbals)
- VLN (Violin)
- VLA (Viola)
- CELO (Cello)
- KB (Kontrabaß)

Measure 70 is marked with a box containing the number 70. The score features various musical notations including notes, rests, and dynamic markings such as *p* (piano). A large watermark "INB noter" is visible across the score, with the text "This music is copyright protected" written diagonally.

7

Handwritten musical score for the first system, measures 75-80. The score includes staves for AFR, EH, SKL, FGT, HRN, TRPT, Tromb, Tuba, Snare, Vln, Vla, Cello, and KB. The key signature is one sharp (F#) and the time signature is 4/4. The tempo is marked  $d. = 144$ . The score contains various musical notations including notes, rests, and dynamic markings such as  $pp$  and  $p$ . A box containing the number 75 is present above the Snare staff.

Handwritten musical score for the second system, measures 81-88. The score includes staves for AFR, EH, BSK, FGT, H, T, TB, Tuba, Snare, Gong, Vln, Vla, Cello, and KB. The key signature is one sharp (F#) and the time signature is 4/4. The tempo is marked  $d. = 144$ . The score contains various musical notations including notes, rests, and dynamic markings such as  $p$  and  $pp$ . A box containing the number 80 is present below the Gong staff.



AFc  
EH  
B, KL  
HRN  
TRPT  
TRMB  
Tuba  
To CHIMES  
Vln  
Vla  
Cello  
KB

AFc  
EH  
Bs KL  
BSN  
H  
T  
TB  
TBA  
CHIMES  
Vln  
Vla  
Cello  
KB

Handwritten musical score for the first system, measures 100-104. The score includes parts for Flute (AF), Flute (EH), Bassoon (Bs Kl), Bassoon (BSW), Horn (HRN), Trumpet (TRPT), Trombone (TRONB), Trombone (TURB), Clarinet (CLARIN), Violin (Vln), Viola (Vla), Cello (CELLO), and Double Bass (KB). A box containing the number "100" is located above the Bassoon (BSW) part. The instruction "SENZA SORD" is written above the Horn (HRN) part. The score features complex rhythmic patterns, including triplets and sixteenth notes, with various dynamic markings such as *p*, *pp*, and *f*.

ACCELERANDO

Tempo II

Handwritten musical score for the second system, measures 105-109. The score includes parts for Flute (AF), Flute (EH), Bassoon (Bs Kl), Bassoon (BSW), Horn (HRN), Trumpet (TRPT), Trombone (TRONB), Trombone (TURB), Clarinet (CLARIN), Bassoon (BSDr), Violin (Vln), Viola (Vla), Cello (CELLO), and Double Bass (KB). A box containing the number "105" is located below the Bassoon (BSDr) part. The score continues with complex rhythmic patterns and dynamic markings, including *mf*, *f*, and *ff*. The instruction "pizz" is visible in the Cello part.

1  
1

Handwritten musical score for the first system, featuring the following instruments:

- AFR (Alto Flute)
- EA (English Horn)
- Bs KL (Bass Clarinet)
- Fag (Bassoon)
- HRN (Horn)
- TRPT (Trumpet)
- TRORB (Trumpet in B-flat)
- Tuba
- Ctrinet
- Vln (Violin)
- Vla (Viola)
- Cello
- KB (Double Bass)

Dynamic markings include *pp*, *f*, *ff*, *sf*, and *f poss*. A *Sotto Voce* marking is present above the Bass Clarinet staff. The score includes various musical notations such as slurs, accents, and articulation marks.

Handwritten musical score for the second system, titled **ALLEGRO SCHERZANDO II**. The instruments listed are:

- Fz (Flute)
- Ob (Oboe)
- Kl (Clarinet)
- Bs KL (Bass Clarinet)
- H (Horn)
- T (Trumpet)
- Tb (Trumpet in B-flat)
- Tuba
- Vib (Vibraphone)
- Sm (Saxophone)
- Vcl (Violoncello)
- Vln (Violin)
- Cello
- KB (Double Bass)

Dynamic markings include *f*, *sf*, *l.v.*, and *pizz*. The score features complex rhythmic patterns and articulation. A large watermark "IB Moter" is overlaid on the page, along with the text "This music is copyright protected".

5

1  
2



Handwritten musical score for the first system, measures 20-24. The instruments listed on the left are Flute (Fl), Oboe (Ob), Clarinet (Cl), Bassoon (Bsn), Horn (Hr), Trumpet (Trpt), Trombone (Trbn), Tuba (Tuba), Violin (Vln), Viola (Vla), Cello (Cello), and Double Bass (Kb). The score includes various musical notations such as notes, rests, and dynamic markings like *f*, *p*, and *sim*. A boxed measure number '20' is present at the beginning of the system. A watermark 'MNB noter' is visible across the score.

Handwritten musical score for the second system, measures 25-30. The instruments listed on the left are Flute (Fl), Oboe (Ob), Clarinet (Cl), Bassoon (Bsn), Horn (Hr), Trumpet (Trpt), Trombone (Trbn), Tuba (Tuba), Violin (Vln), Viola (Vla), Cello (Cello), and Double Bass (Kb). The score includes various musical notations such as notes, rests, and dynamic markings like *f* and *p*. A boxed measure number '25' is present at the beginning of the system, and a boxed measure number '30' is present at the end of the system. A watermark 'MNB noter' is visible across the score.

25

30

1  
4



Handwritten musical score for the first system, measures 35-39. The staves are labeled on the left: Fl (Flute), Ob (Oboe), Kl (Clarinet), Bsn (Bassoon), Hrn (Horn), Trpt (Trumpet), Trcnb (Trumpet/Bassoon), Tuba, Vbr (Vibraphone), Vln (Violin), Vla (Viola), Cello, and Kbn (Kb. Bass). The score includes various musical notations such as notes, rests, and dynamic markings like *p* and *sf*. A circled measure number "35" is present in the Hrn staff.

Handwritten musical score for the second system, measures 40-44. The staves are labeled on the left: Fl, Ob, Kl, Bsn, H (Horn), T (Trumpet), Tb (Tuba), Tbn (Trombone), Vbr, Vln, Vla, Cello, and Kbn. The score includes various musical notations such as notes, rests, and dynamic markings like *p* and *mf*. A circled measure number "40" is present in the Cello staff. A large watermark "MIB" is visible across the center of the page, and a red diagonal watermark "This music is copyright protected" is also present.

FL  
OB  
KL  
FAG  
HRN  
TRPT  
TRONB  
TUBA  
VIBR  
VLN  
VLA  
CELLO  
KBA

45

FL  
OB  
KL  
FAG  
H  
T  
TB  
TBA  
VIBR  
VCLN  
VCLA  
CELLO  
KBA

Cow SARP.

Pf 4 50

1  
6

Handwritten musical score for the first system, measures 53-55. The score includes parts for Flute (Fl), Oboe (Ob), Clarinet (Cl), Bassoon (Fgt), Horn (HRN), Trumpet (TRPT), Trombone (TromB), Tuba (Tuba), Violin (Vln), Viola (Vla), Cello (Cello), and Double Bass (KB). The music is in a key with one sharp (F#) and a 2/4 time signature. Measure 53 is boxed. Performance markings include *f*, *ORD*, *leggiere*, *mp*, *sf*, and *tr*. A large watermark "IMB" is visible across the score.

Handwritten musical score for the second system, measures 56-65. The score includes parts for Flute (Fl), Oboe (Ob), Clarinet (Cl), Bassoon (Fgt), Horn (HRN), Trumpet (TRPT), Trombone (TromB), Tuba (Tuba), Violin (Vln), Viola (Vla), Cello (Cello), and Double Bass (KB). The music continues in the same key and time signature. Measure 65 is boxed. Performance markings include *f*, *tr*, *stacc*, *fp*, and *pizz*. A large watermark "IMB" is visible across the score.

60

65

17

Handwritten musical score for the first system, measures 65-70. The instruments listed on the left are:

- F2
- OB
- KL
- BSN
- HRN
- TRPT
- TROMB
- TUBA
- SNARE
- CHIMES
- VLN
- VLA
- CELLO
- KB

Measure 65 includes the marking "F.T." above the staff. Measure 67 includes a circled number "70". The score contains various musical notations including notes, rests, and dynamic markings.

Handwritten musical score for the second system, measures 71-75. The instruments listed on the left are:

- F2
- OB
- KL
- BSN
- H
- T
- TB
- TOR
- TOTAMBOURINE
- To Bs DR
- Vln
- Vla
- Cello
- KB

Measure 71 includes the marking "F.T." above the staff. Measure 75 includes a circled number "75". The score contains various musical notations including notes, rests, and dynamic markings. Specific performance instructions include "Pizz Sul Pont" for the strings and "Toto Tambourine" for the percussion.

75

18

Handwritten musical score for measures 80-84. The score includes staves for Flute (Fl), Oboe (Ob), Clarinet (Cl), Bassoon (Fgt), Horn (HRN), Trumpet (TRPT), Trombone (TROMB), Tuba (TUBA), Tambourine (TAMB), Bass Drum (BsDr), Violin (Vln), Viola (Vla), Cello (CELLO), and Double Bass (KB). The music is in 4/4 time and features complex rhythmic patterns, including triplets and sixteenth notes. A box containing the number '80' is present above the Horn staff. Performance markings include 'f' (forte), 'p' (piano), 'sp' (sforzando), 'pizz' (pizzicato), and 'oro' (crescendo).

Handwritten musical score for measures 85-89. The score includes staves for Flute (Fl), Oboe (Ob), Clarinet (Cl), Bassoon (Fgt), Horn (H), Trumpet (T), Trombone (TB), Tuba (TBA), Tambourine (TAMB), Bass Drum (BsDr), Violin (Vln), Viola (Vla), Cello (CELLO), and Double Bass (KB). The music continues with complex rhythmic patterns and includes a box containing the number '85' at the bottom. Performance markings include 'p' (piano), 'sim' (sostenuto), and 'oro' (crescendo). A large watermark 'NB noter' is overlaid on the score, with the text 'This music is copyright protected' written diagonally across it.

19

Handwritten musical score for measures 90-94. The score includes staves for Flute (Fl), Oboe (Ob), Clarinet (Kl), Bassoon (Fgt), Horn (HRN), Trumpet (TRPT), Trombone (TROMB), Tuba (TUBA), Tambourine (TAMB), Bass Drum (BsDr), Violin (Vln), Viola (Vla), Cello (Celo), and Double Bass (KB). The music features complex rhythmic patterns and dynamic markings such as *pp*, *sf*, and *f*. A large watermark "INB noter" is visible across the score.

Handwritten musical score for measures 95-100. The score includes staves for Flute (Fl), Oboe (Ob), Clarinet (Kl), Bassoon (Fgt), Horn (H), Trumpet (T), Trombone (TB), Tuba (TUBA), Tambourine (TAMB), Bass Drum (BsDr), Violin (Vln), Viola (Vln), Cello (Celo), and Double Bass (KB). The music continues with complex rhythmic patterns and dynamic markings. A large watermark "INB noter" is visible across the score. The page number "95" is written in a box at the bottom left, and "100" is written in a box at the bottom right.

Handwritten scribbles and a large number "2" at the bottom right of the page.

Handwritten musical score for measures 105-110. The score includes staves for Flute (Fz), Oboe (Ob), Clarinet (Kl), Bassoon (Fag), Horn (HRN), Trumpet (TRPT), Trombone (TRONB), and Tuba (Tuba). The string section includes Tambourine (TAMB), Bass Drum (BsDr), Violin (Vln), Viola (Vla), Cello (Cello), and Double Bass (KB). The score features various musical notations such as notes, rests, and dynamic markings. A boxed measure number '105' is present in the Bassoon staff.

Handwritten musical score for measures 110-115. The score includes staves for Flute (Fz), Oboe (Ob), Clarinet (Kl), Bassoon (Fag), Horn (H), Trumpet (T), Trombone (TB), and Tuba (Tuba). The string section includes Tambourine (TAMB), Bass Drum (BsDr), Violin (Vln), Viola (Vla), Cello (Cello), and Double Bass (KB). The score features various musical notations such as notes, rests, and dynamic markings. A boxed measure number '110' is present in the Double Bass staff. A watermark 'NB noter' and 'This music is copyright protected' is visible across the score.

Handwritten number '21' written vertically on the right side of the page.

Handwritten musical score for the first system, featuring the following instruments and parts:

- FZ** (Flute): Includes a dynamic marking *p* and a rehearsal mark **115**.
- OB** (Oboe): Includes the instruction *To Bass Clarinet*.
- KL** (Clarinet): Includes a dynamic marking *f*.
- Fgt** (Fagott): Includes a dynamic marking *p*.
- HRN** (Horn): Includes a dynamic marking *p*.
- TRPT** (Trumpet): Includes a dynamic marking *f*.
- TRONB** (Trumpet in B): Includes a dynamic marking *p*.
- TURB** (Trombone): Includes a dynamic marking *f*.
- TAMB** (Tambourine): Includes a dynamic marking *p*.
- BsDr** (Bass Drum): Includes a dynamic marking *p*.
- Vln** (Violin): Includes dynamic markings *nv* and *sim*.
- Vla** (Viola): Includes dynamic markings *sim* and *ano*.
- Cello**: Includes dynamic markings *pi2* and *pi3*.
- KB** (Kontrabaß): Includes dynamic markings *f* and *pi2*.

Handwritten musical score for the second system, featuring the following instruments and parts:

- FZ** (Flute): Includes a dynamic marking *p*.
- EngH** (English Horn): Includes a dynamic marking *f*.
- BsKl** (Bass Clarinet): Includes a dynamic marking *f*.
- Fgt** (Fagott): Includes a dynamic marking *f*.
- H** (Horn): Includes a dynamic marking *p*.
- T** (Trumpet): Includes a dynamic marking *p*.
- TB** (Trumpet in B): Includes a dynamic marking *f*.
- TBR** (Trombone): Includes a dynamic marking *f*.
- TAMB** (Tambourine): Includes a dynamic marking *f*.
- BsDr** (Bass Drum): Includes a dynamic marking *f*.
- Vln** (Violin): Includes dynamic markings *f* and *ano*.
- Vla** (Viola): Includes dynamic markings *f* and *ano*.
- Cello**: Includes dynamic markings *ano* and *v*.
- KB** (Kontrabaß): Includes dynamic markings *f* and *ano*.

Handwritten signature or initials.



Handwritten musical score for the first system, featuring the following instruments:

- Fc (Flute)
- FH (Flute)
- Bs KL (Bassoon)
- Fgt (Fagot)
- HRN (Horn)
- TRPT (Trumpet)
- TRONB (Trumpet)
- TUBA (Tuba)
- TAMB (Tambourine)
- BsDr (Bass Drum)
- Vln (Violin)
- Vla (Viola)
- Cello (Cello)
- KB (Keyboard)

Key annotations include "To Gong" above the Tambourine staff, "pizz" (pizzicato) markings for the Violin and Viola, and a tempo marking of 125 in a box. The score includes various musical notations such as notes, rests, and dynamic markings like *f* and *mp*.

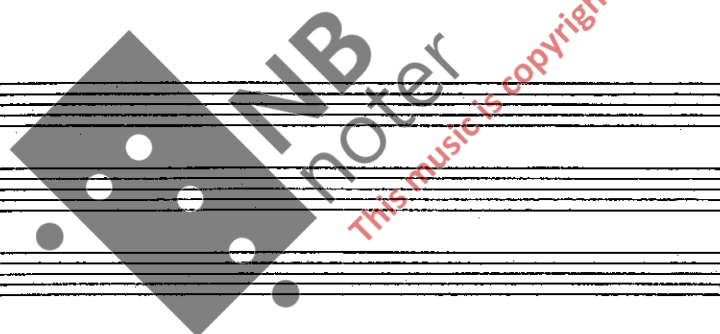
Handwritten musical score for the second system, featuring the following instruments:

- Fc (Flute)
- FH (Flute)
- Bs KL (Bassoon)
- H (Horn)
- T (Trumpet)
- Tb (Tuba)
- Tba (Tuba)
- Gong (Gong)
- BsDr (Bass Drum)
- Vln (Violin)
- Vla (Viola)
- Cello (Cello)
- KB (Keyboard)

Key annotations include "To CHIMES" above the Gong staff and a large handwritten number "23" at the bottom right corner. The score continues with complex musical notation and dynamic markings.

# ACCELERANDO

Handwritten musical score for a full orchestra. The score includes staves for Flute (Fl), English Horn (EH), Clarinet (Cl), Bassoon (Fag), Horn (HRN), Trumpet (TRPT), Trombone (TRONB), Tuba (TUBA), Cymbal (Cym), Bass Drum (BsDr), Violin (Vln), Viola (Vla), Cello (Cello), and Double Bass (KB). The tempo marking 'ACCELERANDO' is written at the top. A rehearsal mark '1301' is present in the Bassoon part. The score features various musical notations including notes, rests, dynamics (f, p), and articulation (pizz).



A series of empty musical staves for the lower instruments, including K (Kornett), H (Horn), T (Trompete), Tb (Trombone), Tba (Tuba), Vln (Violin), Vla (Viola), Cello, and KB (Double Bass). The staves are currently blank.

Handwritten signature or initials, possibly 'A 22'.