

MUSIKK TIL
HENRIK IBSENS

KONGSEMNERNE

OPPSATT ved DET NORSKE TEATRET
APRIL 1989 med
KETIL BANG-HANSEN
SOM INSTRUKTÖR


VINDEREN 2/89

SLGV. 1

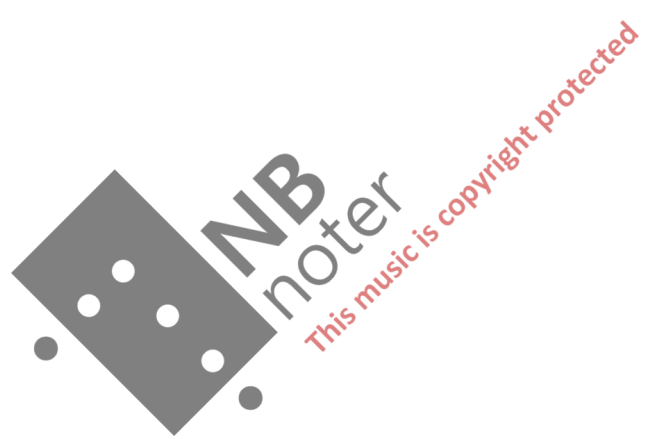
BS DR
 SKRP TR
 4 ROTOTOMS
 1 TOM-TOM
 3 DOMED GONGS
 1 GONG
 2 SUSP CYMB
 GLKSP
 METAL CHIMES
 MARIMBA
 SMALL SYNTH.

RANGLE
 TAMBOURINE
 TEMPLE BL

SLGVK II

RANGLE
 TAMBOURINE
 2 WBL
 BS DR
 SKRP TR
 4 ROTOTOMS
 1 TOM-TOM
 3 DOMED GONGS
 1 GONG
 2 SUSP CYMB
 CHIMES
 BELL TREE
 VIBRA PHON
 VIND. MASKIN





♩ = 58

I OUVERTYR

Handwritten musical score for the first system, including parts for Flute (Fl.), Clarinet (Cl.), Bassoon (Bs.), and Bassoon/Double Bass (Bs./Db.).

Flute: *mf*, *p*, *Detached*, *mf*

Clarinet: *p*, *mf*, *mf*

Bassoon: *p*, *mf*

Bs./Db.: *p*, *mf*

Annotations: *To Bs/Db*, *To Clarinet*, *To Clarinet*, *To Bs/Db*

Performance markings: *mf*, *p*, *mf*, *mf*, *mf*, *mf*, *mf*

Handwritten notes: *Slow of some part*, *Time RH Scribble*

Handwritten musical score for the second system, including parts for Right Hand (RH) and Left Hand (LH).

RH: *mf*, *mf*

LH: *mf*, *mf*

Performance markings: *mf*, *mf*, *mf*, *mf*, *mf*, *mf*, *mf*

Handwritten musical score for the third system, including parts for Trumpet (Tr.), Trombone (Tbn.), and Clarinet (Cl.).

Tr.: *mf*, *mf*

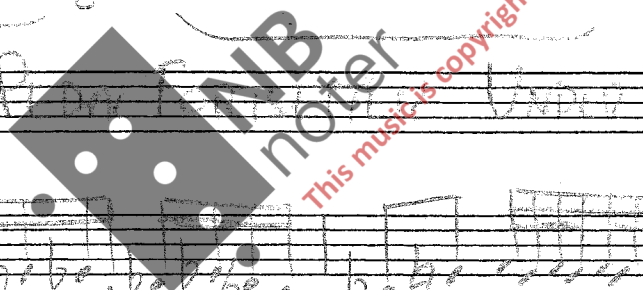
Tbn.: *mf*, *mf*

Cl.: *mf*, *mf*

Annotations: *To Bs/Db*, *To Bs/Db*

Performance markings: *mf*, *mf*, *mf*, *mf*, *mf*, *mf*, *mf*

Handwritten notes: *Piano*



Handwritten musical score for guitar, bass, and drums. The score is organized into systems, each containing a bass line (Bass), a guitar line (Guitar), and a drum line (Drum).

- System 1:**
 - Bass:** Features a melodic line with notes like B \flat , D, and G, and rests.
 - Guitar:** Includes a "DETUNED" section with a triplet of eighth notes and various chordal textures.
 - Drum:** Shows a simple rhythmic pattern with bass and snare notes.
- System 2:**
 - Bass:** Continues the melodic line with notes like B \flat , D, and G.
 - Guitar:** Features a "TOSTAR" section with a triplet and a "PIANO" section with a melodic line.
 - Drum:** Shows a rhythmic pattern with bass and snare notes.
- System 3:**
 - Bass:** Continues the melodic line with notes like B \flat , D, and G.
 - Guitar:** Includes a "LUR" section with a melodic line and a "To Guit" section with a melodic line.
 - Drum:** Shows a rhythmic pattern with bass and snare notes.
- System 4:**
 - Bass:** Continues the melodic line with notes like B \flat , D, and G.
 - Guitar:** Includes a "To Guit" section with a melodic line and a "VIND LVD" section with a melodic line.
 - Drum:** Shows a rhythmic pattern with bass and snare notes.

The score includes various musical notations such as notes, rests, triplets, and dynamic markings like "PIANO". There are also handwritten annotations like "TOSTAR", "LUR", "To Guit", and "VIND LVD".



$\text{♩} = 58$ PORTALEN MARS II

S. 3.

SÄTTER VÅRER ON RIM → GATE

DOMEDGANGSA

JERNBIRDEN MARS BS De

♩

DØREN LUKKER

Handwritten musical score for two strings (GANG). The first system includes notes, rests, and dynamic markings such as *p*, *f*, *lv*, and *mf*. The second system continues the notation with similar dynamics and includes the instruction *MEDGANG*.

Handwritten musical score for strings (GANGSP and VIOL). The *GANGSP* part features notes with accidentals (sharps and flats) and dynamic markings like *p* and *mf*. The *VIOL* part includes notes and rests. A large watermark for "NB noter" is overlaid on the score, along with the text "This music is copyright protected".

Handwritten musical score for strings (GANGSP and VIOL). The *GANGSP* part continues with notes and rests, including dynamic markings like *f* and *mf*. The *VIOL* part includes notes and rests. The watermark "NB noter" and "This music is copyright protected" are still visible.

HÄRON: Der Thron hat, Es En Uthra Han.

Low half Bass

IV $\text{♩} = 58$ S. 4. *Conce* V To B: Dr

GENR *pp* *p* *ff*

VOICE - CHOR m. REVARD.

GENR *p* *p* *f*

FUDA: Es Veit Inkte Kva Det Var, *ff*

BAND UT *ff* *pp* *f*

INSTR: STRASSER HÄRON, DER DER BAR *ff*

Bs Dr *p* *pp* *f*

GENR *f* *f* *f*

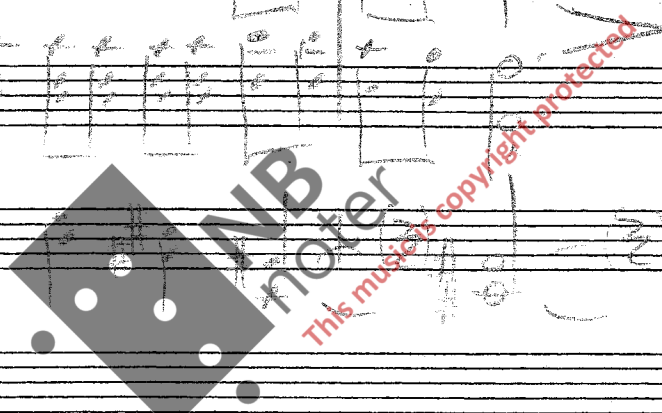
Bs Dr *p* *pp* *f*

S. 6 VI $\frac{3}{4}$

HÄRON LA DET VERA SÖNDET VIL *f*

GENR *f* *p* *f*

GENR *mf*



Händel... Op. 50...
Händel... Op. 50...
Händel... Op. 50...

VII A s. 9.

Unter Bass
Violoncello
Soprano
Violoncello
Verdugo

4/4
Kornett

4/4
Posaune

Kollera medo

BsDn

BsDn

VII B

Amore

BsDn

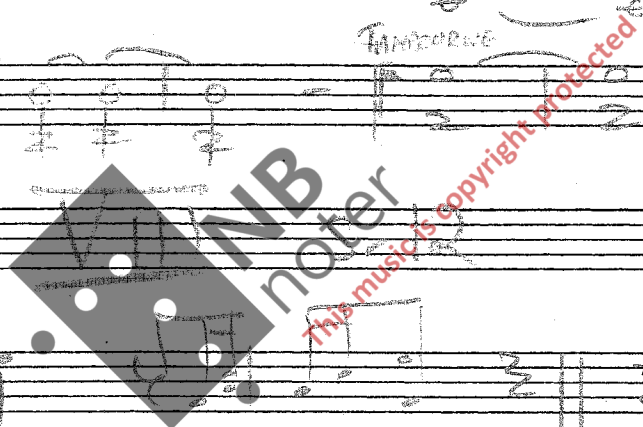
A
Kornett

A
Posaune

Lue Beate Trezolo

SIGRID: SAFAU VI AUS BE

SIGRID: BED!



J = 58

A
RORIS

JAWBONE

VOICE

Bs
De

RANGE

Tom
Tom

AROTOS

KORNER

Bs
B.D

AROTOS

SWARD TIL KONGEN

Bs De A

Bs
TRONCO

SWARD TIL KONGEN

Bs A

(ARNE DORON) XI s. 14. — 6 —

SKULE JARE: DE BAYU ALI
SANSARA MO KANGA;
DEN UNGE? XII S-16
Mama/ma
Hina... A Trest
PA Vena Dee
KONGGAS
Tien.

2
SUSP
CMB

pp

pp

pp

2
SUSP
CMB

pp

pp

4 Kor

p

pp

4 Kor

p

pp

Bsdn

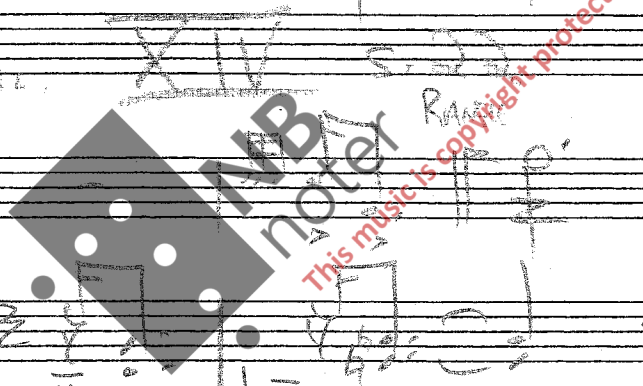
mf

p

Bsdn

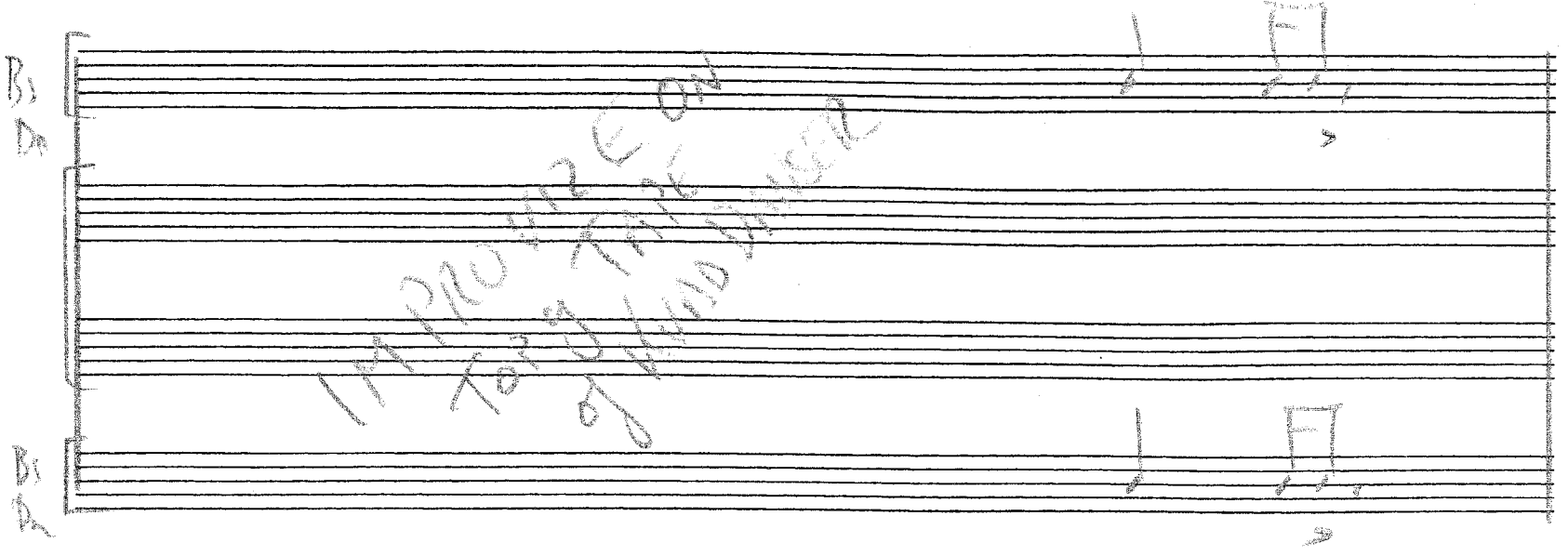
mf

p



BRYLUPS MUSIK

IMPROVISE ON
TOP TAKE
of WINDMILLER



Hänçon: Long Vic VTA Aca
Gudo MEO.

XV

S. 27

Buc Nuan:
In GADET,
per Det.

XVI

S. 23

B.D. *Kontraba* *Bass Trombo*

XVII SKUES DUM, S. 31

Glusp *Membra* *Vis* *Bass Trom*

SKUES: Or Set Meg Pa Det
Tone Set T.

Niklas... Detter
VONT

XVII B

s. 35

♩=38 3/4

3
DORER
GONGS

Musical notation for the first system, including staves for Gong and Piano (P).

XVIII s. 40

Hilse GOTT XVIII B s. 47

♩=132
SABLE: HANON VON LINDEN
HAUS

SIGRID: NAR DER TIEFEN MEER, DER
HOCHSTE NAUB

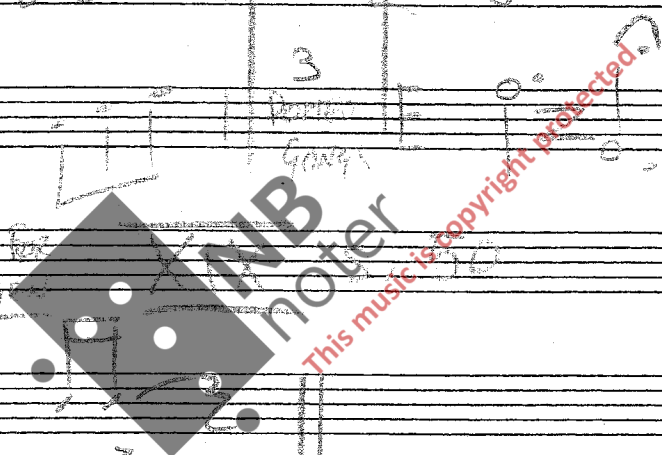
Musical notation for the second system, including staves for Flute (Fl.), Piano (P), and Gong (GONGS). Includes dynamic markings like *f* and *p*.

HANON: INGEN JARSTAW

SLEP FÜR WENIGER
GUT HAN SOURE KONG
RUSCHAP.

♩=55

Musical notation for the third system, including staves for Bassoon (Bs) and Double Bass (Ba).



SUNDA JARU Eka Jangka
FRA VINA.

BISPNILAL:

XX

s. 51

SUNDA

B.Ni: HAN DESEN

S.D: DASAR

SUNDA TA KALU

HAN STENAK SEPIUNE
B.S.Dic
L OLAK HEJANG KIRAGE.

OH Eka SA SNA DEN
HEJANG KIRAGE

HO SIA ANTOR GURT
FACT?

GANG

FAHAR MEN

Handwritten musical score for the first system, including parts for Trompet, Bsn, and other instruments. The score includes notes, rests, and dynamic markings such as *p*, *mp*, and *mf*. A box labeled "SAND BAND IN" is present on the right side.

Handwritten musical score for the second system, including parts for 2 Wb and 5 Tromb. A large box labeled "MUNGESANG BAND IN" is present in the center. The score includes notes and rests.

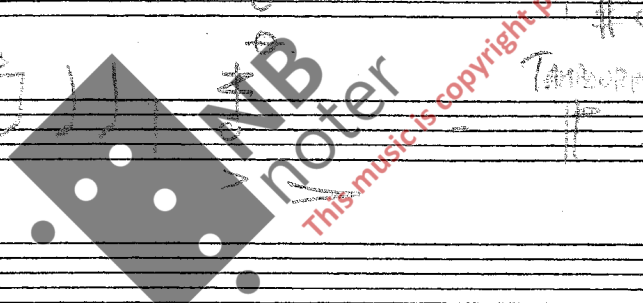
Handwritten musical score for the third system, including parts for Bsn and Mar. The score includes notes, rests, and dynamic markings. A large watermark "NB Moter" is overlaid on the score.

Handwritten musical score for the fourth system, including parts for Bsn and Mar. The score includes notes, rests, and dynamic markings. A large watermark "NB Moter" is overlaid on the score.

Handwritten musical score for system XXI, page 53. It features two staves labeled 'Gong' and 'Bsn'. The 'Gong' staff contains rhythmic notation with various note values and rests. The 'Bsn' staff contains melodic notation with notes, rests, and dynamic markings such as 'p' and 'mf'. A circled word 'Vokal' is written above the first few notes of the Bsn staff. The system is numbered 'XXI s. 53' at the bottom.

Handwritten musical score for system XXIV, page 53. It features two staves labeled 'Bsn' and 'Tambora'. The 'Bsn' staff contains melodic notation with notes, rests, and dynamic markings. The 'Tambora' staff contains rhythmic notation with notes and rests. A circled word 'Vokal' is written above the first few notes of the Bsn staff. The system is numbered 'XXIV s. 53' at the bottom.

Handwritten musical score for system XXV, page 53. It features two staves labeled 'Tambora'. The top staff contains rhythmic notation with notes and rests. The bottom staff contains melodic notation with notes and rests. The system is titled 'MARGARETES SANG A CARPENTIER' in large, bold, handwritten letters.



...Eg ER KLUGAREN.
No SUNDAG ER MOTTEN!

...Eg ER KLUGAREN.

...EIN MANNS JOURNAL
Björns ER STOR MANN

...Og Hver Søndag Inga Ks har Hæder.

Handwritten musical score for Gong and Mar. The Gong part consists of chords on a five-line staff. The Mar part consists of a melody on a five-line staff. There are various musical notations including notes, rests, and dynamic markings.

XXIII MARGARETAS SANG
XXIV MARGARETAS SANG

...Brevet og Tene Han. ...aftekniske Går
På en Søndag.

s. 68
a CAPPELL

XXV s. 76

LEND
Hæder: TIDA HAR VÆRE IFRÅ DYK.

Handwritten musical score for Soprano and Tenor. The Soprano part is on a five-line staff with a treble clef. The Tenor part is on a five-line staff with a bass clef. There are various musical notations including notes, rests, and dynamic markings.

Handwritten musical score for Soprano and Tenor. The Soprano part is on a five-line staff with a treble clef. The Tenor part is on a five-line staff with a bass clef. There are various musical notations including notes, rests, and dynamic markings.

...DE ORIGINALE
H. ... IKKE.

2 Sæsoner

XXVI s. 82

Handwritten musical score for 3 Dams and Gong. The 3 Dams part consists of three staves with treble clefs. The Gong part consists of chords on a five-line staff. There are various musical notations including notes, rests, and dynamic markings.

3 Dams
Gong
BAND
IN

2/4 $\text{♩} = 58$

XXVII

AKT II

S. 83

4 Roto

Bs Dr

Sax

Bs Du

Metamorphosis

Bea Regao

Sax

4 Roto

4 Roto

Kong

Sax

Gong

Bala

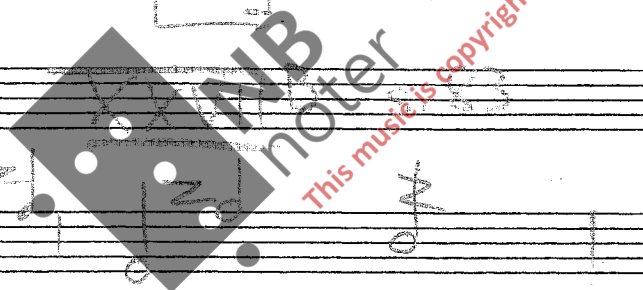
Gong

Sax
 S...
 PA KEM...
 ...

$\text{♩} = 50$

3 Dorel Gong

3 Dorel Gong



SKULE: ... MEN SAKI HINGGUNG
PROM MED A...

XXVIII S. 93

SCRAPE along EDGE

2 SUSP GONG

BsDr

GONG

SCRAPE along EDGE

CHINA

2 SING SAKI PAKI ... SKULE ... ER DU ...

SKULE ... ER DU ... VISI ... ER DU

SKULE ... ER DU VISI ... ER DU DE ...

GONG

XXIX S. 97

to BsDr ... KREU ... DU ... INGE ... RE ...

Moon C4

Solo Voice

to GONG ... BsDr

2 Sop
CMB

BRUNNEN

Farm Kinn
Tann

og Ku Havn mals
Lapp

2 Sop
CMB
GONG

... SÅ HÅ HÅ DOR

TRANSFORME!

KIRKESKOLEN

HÅKON: ... KVAR HÅ ENN BIR MEN PÅ VHEIM GRUV.

TETTER FELL S. 101

Ton
Ton

♩ = 58

#6 # sim #12 #12 #12 #12 #12

CMB

ru.

VÅRENS
... ÅR EN
SÅ HÅ HÅ
SKAL DOR.

SKAPTE VÆRER

XXXIII S. 106

Bs Dr (99)

NIFS Distans

FRIT.

oro ff

99

... BIR HÅ HÅ
HÅ HÅ HÅ

XXXIV

S. 108

$\text{♩} = 58$

$\text{♩} = 58$

... SRIWIJAYA HANU LANGGAT DEW

Ton Ton

Ke Ho Ho Dyacho

BSPDn

5

Ton Ton

BSPDn

5

Skrul: Pa Fama, Pa Fama

B. Dn

Gong

Ke Ho Ho Dyacho

Gong

Ke Ho Ho Dyacho

B. Pr

Gong

Ke Ho Ho Dyacho

PP

... Pasa... re... to... De... Mo... De... 2

$\text{♩} = 58$

B. Dn

BSPDn

5

B. Dn

BSPDn

5

Skrul: Pa Sa... on... Ho... re... to... De... Mo... De... 2

XXXVII

S. 115

Vind. Hava

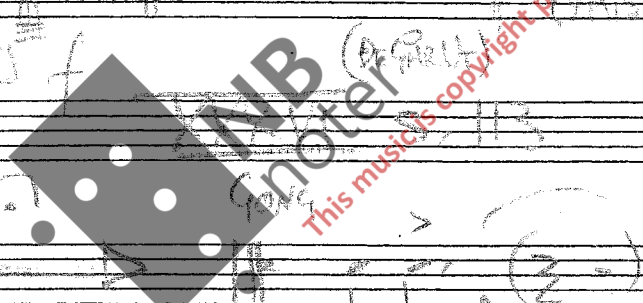
BSPDn

... Son... Re... tar... Sri... K... u... l...

Ton Ton

PP

3 Dn... Gong



BÄNDLIN S. 116

MARGARET TEIL.
d=50

XXXVIII

s. 117

Ein Kauge

SKR: För Den V. F. B. S. 123
1830 A. 1800 1810

GONG
f

GITARRE
f

SKRIF
•• Eg Villu Væren Den Stærste Chænder
Sjærlig Det Væks Vengar Pa
•• Herrens Son Vangtukt Kommetænken
Ti Sønning.

B.DI

B.D.
Peto •• For Herre Ege Hæmsæder
Mæd Hæge Hæge Hæge
Chænder.

3. DANC
Gang

CITRAS
f

XXXIX S. 127

3. Kæters



XIX cont -

40

SINT KATE, SPANJONG

A HANDE SINT MOT
HEDIGANG

3 Peto

3 Peto

3 Peto

3 Peto

3 Peto

3/8 ♩ = 58

16.02.2018 Sa, 14.00.00.00

42

Der Aufgebende Sonne

Man

Org

Man

Org

Man

Org

Handwritten signature or initials.