

"DØT KAN KOMME NOEN..."

MUSIKK TIL

PER BRONKENS  
NOVELLE FILM



MUSIKKEN  
ER BASERET  
PÅ  
NOVA NOTTER

AV  
DAVID MONRAD  
JOHANSEN

Olav Aulund  
Vindheim 9/19

Per Krogh

# "DØT KAN KOMME NOEN..."

MUSIKK TIL en NOVELLEFILM  
av PER BRONKEN over en  
NOVELLE av ROY JACOBSEN

MUSIKKEN BASERER SEG  
PÅ MOTIVER av

DAVID MONRAD-JOHANSEN  
(1888 - 1974)

## BESETNING:

FL

Picc/FL

OB

ENG.H.

2 KLAR

2 FGT

4 HORN

2 TRPT

3 TROMB

2 SLAGV.

TIMPANI

HARPE

STRYKERE



NB  
noter

This music is copyright protected

PARTITURET er i C

A handwritten signature in black ink, appearing to read 'Ole A. Thomsen'.

VINDEREN 2-10/99

FL I  
Picc  
OBI  
E. HRN  
KL I  
KL II  
FG I  
FG II  
HRN  
TRT I  
TRON I  
HARP  
TIMP  
CRONALIS  
SUSPCMB  
VLN I  
VLN II  
VLA  
CELLI  
KB

CON SORD  
TUTTI  
CON SORD  
TUTTI  
Tutti

Handwritten musical score for a symphony orchestra. The score is written on multiple staves, each labeled with an instrument or section:

- FL I** (Flute I)
- Picc** (Piccolo)
- OBI** (Oboe I)
- KLI** (Clarinet I)
- KII** (Clarinet II)
- FgII** (Bassoon II)
- HRN** (Horn)
- TRPT** (Trumpet)
- TRON** (Trombone)
- HARP** (Harp)
- TIMP** (Timpani)
- CRONALIS** (Cymbals)
- SUSOCMS** (Suspended Cymbals)

The score includes various musical notations such as notes, rests, dynamics (e.g., *pp*, *mf*), and articulation marks. A large watermark is present in the center of the page:

**NB** noter  
This music is copyright protected

At the bottom of the page, there is a handwritten page number: **-2-**

FL I  
Picc  
OBI  
E Horn  
K I  
K II  
Fg I

HRN  
TRP  
TRON

HARP  
TMR

CRONAI  
SUSCONE  
TUTTI

Handwritten musical score for a symphony orchestra. The score is written on multiple staves, each labeled with an instrument. The instruments listed on the left are: Fl I, Picc, OBI, Kl I, Fg I, Fg II, Hr, Trp, Tron, 3, Harp, Tim, Crstaus, and Susp. Cmp. The score includes various musical notations such as notes, rests, and dynamic markings. A large watermark "NB noter" is visible across the center of the page, with the text "This music is copyright protected" written below it. The tempo is marked as  $d = \frac{14}{4}$  in the lower right corner. The score is divided into measures by vertical bar lines.

FLUTE I  
OBOE I  
CLARINET I  
FLUTE II  
115  
HORN I  
TRUMPET I  
TRUMPET II  
3  
2  
HARP  
TIMPANI

FL I  
OB I  
K I  
K II  
Fg I  
M2: 11 sec  
HRN  
TRP  
TRON  
3  
HARP  
TMR  
CMB  
B.D



FLI  
Picc  
OBI  
ENH  
KLI  
FGL

M3 48sec

5

HRN  
TRP  
TRON

HARP  
TIMP

Tutti

FL I  
Picc  
OBI  
EH  
KLI  
FgI  
HRN  
TRP  
Trom  
Harp  
Timp  
Cromus  
BsDr  
Tutti

10

FL I  
OBI  
E.H.  
K.I  
K.II  
F.C.I

[M4]: 5 | rec

HRN  
TRP  
TRON  
3

HARP  
TMR

FL I  
Picc  
OBO I  
EH  
Kl I  
Kl II  
Fg I  
Fg II

2  
Hrn  
3  
Trpt  
Tronp  
3

Harp  
Timp

FL I

Picc

OBI

EH.

KLI

KL II

FGLI

M5: 16 sec

HRN

TRPT

TRON

3

HARP

TIMP



Handwritten musical score for various instruments. The score is organized into systems with the following instrument labels on the left:

- FL I
- OB I
- EH
- K I
- K II
- F I
- F II
- HR I
- TR I
- TR II
- HARP
- TIMP

The score includes various musical notations such as notes, rests, and dynamic markings. A specific instruction is written in a box: **M6: 20sec**. A large watermark is present in the center of the page: **NB noter** with the text *This music is copyright protected* written diagonally across it.

Handwritten musical score for various instruments. The score is divided into two systems. The first system includes Flute I (Fl I), Oboe I (Ob I), English Horn (E.H.), Clarinet I (Cl I), Clarinet II (Cl II), Bassoon I (Fg I), and Bassoon II (Fg II). The second system includes Horn I (Hr I), Trumpet I (Trpt I), Trombone I (Trbn I), Harp, Timpani (Timp), and Bass Drum (B.D.).

Key markings and annotations include:

- ANIMATO**: Written above the Flute I staff in the first system and above the Horn I staff in the second system.
- M7:19 sec**: A boxed annotation in the first system.
- RELINKER**: A handwritten note in the second system.
- Free**: A circled word in the second system.
- pp**: Piano dynamic marking in the Bass Drum staff.
- P**: Piano dynamic marking in the Bassoon I staff.
- 3**: Triplet markings in the Bassoon I and Bass Drum staves.
- 3-7**: A circled triplet marking in the Flute I staff.

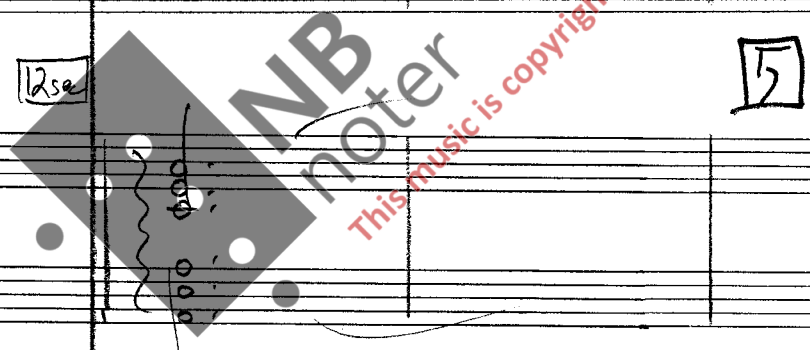
FL I  
OBI  
EH.  
KL I  
KL II  
FGL

M8 | 1.07 sec

$\text{♩} = \frac{3}{4}$

2  
HRN  
TRPT.  
TRON.  
3

12 sec



5

HARP  
TIMP



FL I  
OBI  
KH  
KLI  
KII  
FGL

HRN  
TRP  
TRON

HARP  
TMR

Handwritten musical score for various instruments. The score is organized into systems. The instruments listed on the left are:

- F2I
- Picc
- OBI
- E.H.
- KLI
- F2I
- HRN
- TRPT
- TRON
- HARP
- TIMP

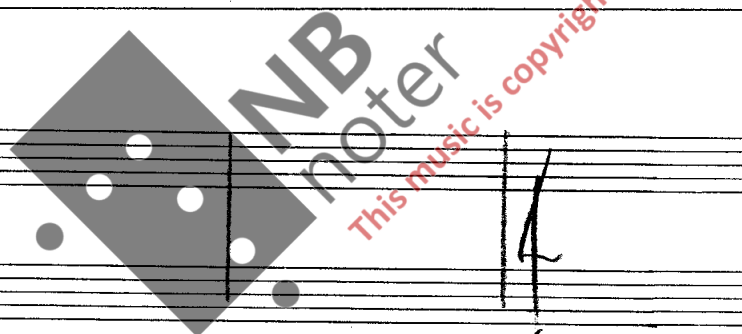
The score includes several systems of music. The first system shows notes for F2I, Picc, OBI, E.H., KLI, and F2I. The second system includes HRN, TRPT, and TRON. The third system includes HARP and TIMP. The fourth system contains a dense melodic line with many notes. The fifth system contains a bass line with fewer notes. There are handwritten annotations such as "15" and "20" in boxes, and "ARP" and "Ebdue" near the end of the score. A large watermark "NB noter" is visible across the middle of the page, with the text "This music is copyright protected" written diagonally below it.

FL I  
Picc  
OBI  
H.  
K. I  
K. II  
F. I

4/4 [25]

2  
HRN  
3  
TRP  
TRON  
3

HARP  
TMR



div CON SORD V  
CON SORD P V  
div CON SORD V  
CON SORD P

FL I  
Pic  
OBI  
K.I.  
K.II  
V.II  
Fg.I  
Fg.II  
M9: 50 sec  
HRM  
TRT  
TRM  
HARP  
Timp  
E.TonToms  
BsDr

FLI  
OBI  
KLI  
FGLI  
HRN  
TRP  
TRON  
HARP  
TINP  
B&D

5 10

*This music is copyright protected*

div arco  
pizz f

FLUTE I  
OBOE I  
EUPHON  
CORNET I  
FLUTE II

♩ = ♩ 4/4

115

TRUMPET I  
TRUMPET II  
TRUMPET III

HARP  
TAMBOURINE  
BASS DRUM

VIOLA  
CELLO  
CONTRABASS

Handwritten musical score for a symphony orchestra. The score is written on multiple staves, each labeled with an instrument or section:

- Fl I** (Flute I)
- Picc** (Piccolo)
- OBI** (Oboe I)
- E.H.** (English Horn)
- K.I** (Clarinet I)
- K.II** (Clarinet II)
- Fg I** (Fagot I)
- Fg II** (Fagot II)
- ♩ = 84** (Tempo marking)
- MIO** (Musical instruction)
- sec** (Musical instruction)
- 5** (Musical instruction)
- HRN** (Horn)
- TRPT** (Trumpet)
- TRON** (Trumpet)
- 3** (Musical instruction)
- 4** (Musical instruction)
- HARP** (Harp)
- TIMP** (Timpani)
- Susp Cym** (Suspension Cymbal)
- Bs Dr** (Bass Drum)

The score includes various musical notations such as notes, rests, dynamics (p, f), and articulation marks. A large watermark is present in the center of the page:

**NB** noter  
This music is copyright protected

Handwritten musical score for a symphony orchestra. The score is written on multiple staves, each labeled with an instrument:

- FL I** (Flute I)
- OB I** (Oboe I)
- EH** (English Horn)
- KL I** (Clarinet I)
- KL II** (Clarinet II)
- Fg I** (Fagot I)
- Fg II** (Fagot II)
- HRN** (Horn)
- TRT** (Trumpet)
- TRON** (Trumpet)
- HARP** (Harp)
- TIMP** (CROTALE) (Timpani)

The score includes various musical notations such as notes, rests, and dynamic markings. A large watermark is present in the center of the page:

**NB noter**  
This music is copyright protected

At the bottom center, there is a handwritten signature or mark: **77-42**



FLI  
OBI  
K.H.  
K.I.  
FgI

♩ = 56 M II : 20 sec

HRN  
TRT  
TRON

HARP  
NB →

TIMP

Bsd

NB →

Handwritten musical score for a symphony orchestra. The score is written on multiple staves, each labeled with an instrument or section:

- F. I** (First Flute)
- F. II** (Second Flute)
- OBI** (Oboe I)
- E.H.** (English Horn)
- K. I** (Clarinet I)
- K. II** (Clarinet II)
- F. I** (First Bassoon)
- F. II** (Second Bassoon)
- HRN** (Horn I)
- HRN** (Horn II)
- TRP** (Trumpet I)
- TRON** (Trumpet II)
- HRP** (Harp)
- TIMP** (Timpani)
- CROTALS** (Cymbals)
- VIBR** (Vibraphone)

The score includes various musical notations such as notes, rests, dynamics (e.g., *f*, *p*, *mf*), and performance instructions (e.g., *F.T.*, *sim*, *Str. mute*). A tempo marking is present: **♩ = 84** and **M 12 : 34 sec**. A box containing the number **5** is also visible. A large watermark for "NB noter" is overlaid on the score, with the text "This music is copyright protected" written diagonally across it.

Handwritten musical score for a symphony orchestra. The score is written on multiple staves, each labeled with an instrument or section:

- Fl I** (Flute I)
- OBI** (Oboe I)
- EHI** (English Horn I)
- KLI** (Clarinet I)
- FgI** (Fagot I)
- HRN 2** (Horn 2)
- TRT** (Trumpet)
- TROM 3** (Trombone 3)
- HARP** (Harp)
- TIMP** (Timpani)
- CROTALI** (Crotali)
- VIBR** (Vibraphone)

The score includes various musical notations such as notes, rests, and dynamic markings. A large watermark "NB noter" is visible across the center of the page, with the text "This music is copyright protected" written diagonally below it. A circled number "10" is present in the middle of the page. The word "Tutti" is written in the lower right section of the score.

FL I

OB I

EH

KL I

FR I

♩ = 66 M13 23 sec

HRN 2

TRP 3

TRP 3

HARP

TIMP

FLUTE I  
OBOE I  
CORNET I  
KORNET I  
FAGOTTI  
HORN I  
TRUMPET I  
TRUMPET II  
HARP  
TIMPANI

Handwritten musical score for a symphony orchestra. The score is written on multiple staves, each labeled with an instrument or section:

- F. I
- OBI
- K. I
- K. II
- F. II
- HR. I
- TR. I
- TR. II
- HARP
- TIMP

The score includes various musical notations such as notes, rests, and dynamic markings. A tempo marking is present:  $\text{♩} = 76$  M 13: 26 sec. There is a large watermark in the center of the page that reads "NB noter" and "This music is copyright protected".

Handwritten musical score for a symphony orchestra. The score is written on multiple staves, each labeled with an instrument:

- F. I (First Flute)
- OBI (Oboe I)
- EH. (English Horn)
- K. I (Clarinet I)
- K. II (Clarinet II)
- F. II (Second Flute)
- HRN (Horn)
- TRP. (Trumpet)
- TRON. (Trombone)
- HARP (Harp)
- TIMP (Timpani)

The score includes various musical notations such as treble clefs, notes, rests, and dynamic markings. A large watermark "NB noter" is visible across the middle of the page, with the text "This score is copyright protected" written diagonally across it. A circled number "101" is present in the upper right section of the score.

FL I  
Picc  
OBI  
OBI I  
KLI  
KLI I  
FGI

♩ = 100 M 14 30 sec

5

HRN  
TRP  
TRON  
3  
HARP  
TAMP  
ATAMTAM  
GONG

PIAN  
div



FL I  
Picc  
OBI  
OBI I  
K I  
K II  
Fg I

10

HRN  
TRP I  
TRON I  
3  
HARP  
TIMP

FLI  
OBI  
KLI  
FGI

♩ = 100 [M15]: 11 sec

HRN  
TRM  
TRM

HARP  
TUP  
4 Tom  
Bsdv

FLI

OBI

E.H.

KLI

FGLI

$\text{♩} = 72$  M16 = 14 sec 5

HRN

TRPT.

TRONP.

3

3

3

4

HARP

TIMP

FLUTE I  
OBOE I  
CLARINET I  
FLUTE II  
♩ = 60  
MIZ: 35 sec  
HORN I  
TRUMPET I  
TRUMPET II  
HARP  
TIMP  
BsDr

REPLIKATOR  
NB noter  
This music is copyright protected

FLUTE I  
OBOE I  
EUPHON  
CLARINET I  
BASSOON I  
COR I  
COR II  
TRUMPET I  
TRUMPET II  
TRUMPET III  
HARP  
TIMPANI

FL I  
Picc  
OBI  
EH.  
K.I  
K.II  
Fg.I  
♩ = 66 [M18] : 55sec  
HRN  
TRP.  
TRON.  
3  
HARP  
TUP  
4 Tom  
Sus Percs

Handwritten musical score for a symphony orchestra. The score is written on multiple staves, each labeled with an instrument or section:

- FLI (Flute I)
- Picc (Piccolo)
- OBI (Oboe I)
- EH (English Horn)
- KLI (Clarinet I)
- KII (Clarinet II)
- FGLI (Fagott I)
- HRN (Horn)
- TRPT (Trumpet)
- TRON (Trombone)
- HARP (Harp)
- TIMP (Tympani)
- CHM (Cymbal)
- SUSP (Suspended Cymbal)

The score includes various musical notations such as notes, rests, slurs, and dynamic markings. A large watermark "MNB Noter" is visible across the center of the page, along with the text "this music is copyright protected".

42 sec

FLI  
Picc  
OBI  
EH  
K.I  
K.II  
Fg.II

Hr.I  
Trpt.  
Tron.  
3

HARP  
Timp  
CHIMES  
Bsdv



Handwritten musical score for a symphony orchestra. The score includes parts for Flute I, Piccolo, Oboe I, English Horn, Clarinet I, Clarinet II, Bassoon I, Bassoon II, Horn I, Horn II, Trumpet I, Trombone I, Trombone II, Trumpet II, Trombone II, Harp, Timpani, and Bass Drum. The score is written in a key signature of one flat (B-flat) and a 3/4 time signature. The tempo is marked as  $\text{♩} = 108$ . A rehearsal mark [M19] is present, indicating a duration of 1 min 30 sec. A box with the number 5 is also visible. The score features various musical notations, including dynamics (e.g.,  $f$ ,  $mp$ ), articulation (accents, slurs), and performance instructions. A large watermark "NB noter" is overlaid on the score, with the text "This music is copyright protected" written diagonally across it.

Handwritten musical score for a symphony orchestra. The score is written on multiple staves, each labeled with an instrument:

- Fl I** (Flute I)
- OBI** (Oboe I)
- KLI** (Clarinet I)
- Fg I** (Bassoon I)
- HRN** (Horn)
- TRPT** (Trumpet)
- TRON** (Trumpet 3)
- HARP** (Harp)
- TIMP** (Timpani)
- 4 Tar Tom** (4 Tom-toms)
- BSD** (Bass Drum)

The score includes various musical notations such as notes, rests, dynamics (e.g., *p*, *f*), and articulation marks. A large watermark is present in the center of the page:

REPLIKOR  
NB noter  
This music is copyright protected

A box containing the number **10** is visible on the right side of the score.

FL I  
OBI  
F. II.  
KLI  
F. I  
d=  
H. I  
TR. I  
TRON I  
3  
HARP  
Timp  
4 Tom Tom  
Bs Dr

Replikker

OPP for VANN

REPLIKKER

w. sn der Stricks

Sul Pant

- 41 -

FL I  
OBI  
KLI  
FGI  
FGII  
HRN  
TRT  
TRON  
3  
HARP  
TUP  
4 Ton Tun  
Bc Dv

20

This music is copyright protected

Handwritten musical score for a symphony orchestra. The score is written on multiple staves, each labeled with an instrument or section. The instruments listed on the left are: Fl I, Picc, OBI, E.H., Kl I, Kl II, Fg I, Fg II, HRN, TRP, TRM, HARP, Timp, 4 Bsn, and Bsd. The notation includes various musical symbols such as clefs, time signatures, notes, rests, and dynamic markings like 'f' (forte) and 'pizz' (pizzicato). There are also some handwritten annotations and a large watermark in the center that reads 'NB noter This music is copyright protected'.

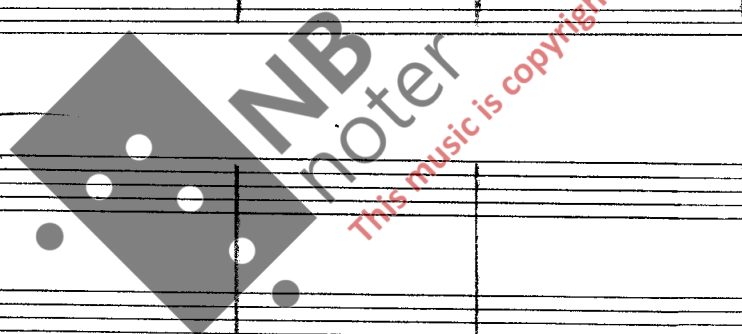
FL I  
OB I  
K I  
K II  
Fg I

25  
HRN  
TRPT  
TRON  
HARP  
TMR

Handwritten musical score for a symphony orchestra. The score is written on multiple staves, including:

- Fl I** (Flute I)
- Obi** (Oboe I)
- EH** (English Horn)
- K. I** (Clarinet I)
- K. II** (Clarinet II)
- Fg. I** (Bassoon I)
- HRN** (Horn)
- TRPT.** (Trumpet)
- TRON.** (Trumpet)
- HARPS** (Harp)
- TIMP** (Timpani)

The score includes a tempo marking:  $\text{♩} = 58$  and a metronome marking:  $\text{M}20: 2 \text{ sec}$ . A box containing the number **5** is present in the score. The music features various rhythmic patterns, including triplets and sixteenth notes, and dynamic markings such as *p* (piano) and *div* (divisi).



FL I  
OBI  
E.H.  
K.I  
K.II  
Fg.I  
d=58 M21: 37sec  
HRN  
TRT  
TRON  
3  
HARP  
TMR  
CROALL



FL I  
OB I  
EH  
Kl I  
Kl II  
Fg I

Hr I  
Trp I  
Tron I

Harp  
Timp