

Kari Beate Tandberg (2018)

SOUND-TALES

alto saxophone and piano

Committed by Kjellaug Karen Horsberg Kornstad
for her Masters Degree in Alto Saxophone at the Arctic University of Norway/University of Tromsø
World premiere June 14, 2019 in Kulturhuset Tromsø

Supported by The Composers' Remuneration Fund
(Komponistenes Vederlagsfond)

SOUND-TALES

Notation/techniques - an overview (further explanations is given in the score)

Alto saxophone

- Bisbigliandi (= timbral trill)
The fingerings notated in the score refer to Jean-Marie Londeix* **L** (page 53-55)
- Trills (ordinary) *Tr If no other information is given: Trill halfstep up from main-note*
- Subtones
- Slap-tongue
- Multiphonics
The exact fingerings notated in the score refer to Daniel Kientzy** **K** (p. 33-48)
Marcus Weiss/Giorgio Netti*** **W** p. 82-93
- Chromatic gliss (up or down)
- Altissimo-register No fingerings notated in the score.
Suggestions available in Weiss/Giorgio Netti*** p. 36 among others.

Piano

- Depress keys silently + sost ped.
- Mute notestring close to damper. Play on given key
- Tapping with fingertips on strings
- Sweeping with fingertips across strings
- Arpeggio: A I) Antisipated, A II) Starting on the beat



* Jean-Marie Londeix: *Hello! Mr Sax or Parameters of the Saxophone* (Editions Musicales Alphonse Leduc)

** Daniel Kientzy: *Les Sons Multiples aux Saxophones* (Salabert)

*** Marcus Weiss/Giorgio Netti: *The Techniques of Saxophone Playing* (Bärenreiter 2010/2015)

SOUND-TALES

alto saxophone and piano

Tempo I
♩ = 120

Alto Sax

mp

bisbigl.

start Tr SLOW accell. twds very FAST

sfz

Piano

Use the forearms and depress silently both black and white keys from the given note and up, making sure all keys with piano-dampers are included. When the dampers are lifted up and the strings are vibrating freely, push Sost. ped down.

(Sound of reverberation from opened strings)

sfz

Sost. ped.

5

A. Sax.

Produce short, subtones randomly and as fast as possible within the given notes making interval jumps avoiding a scale-feeling.

mp

5

Inside piano

Use both hands tapping with fingertips on strings in given register.

sfz Mute note string close to damper. Play on given key.

p

L.V.

Sweep softly with fingertips across strings in approx. given register.

8vb
Ped.

A. Sx. *mf* *pp*

Ord.

Pno. *f* *pp*

Arpeggio I: Fast and anticipated

Arpeggio II: Slow, starting on the beat

L.V.

Red.

A. Sx. *p* *mp*

K 102

bisbigl.

Pno. *p* *mp*

A II

Red.

A. Sx. *mf* *p* *mf* *f* *p*

subtones *Ord.*

Pno. *mf* *pp*

AI *A II*

Red. *

A. Sx. *mp* *p* *pp*

bisbigl. L Ab2 p.54

Pno. *mp* *p*

A II *A II*

Red. *

A. Sx. A

Pno.

25

mp *mf* *mp*

pp *A II*

gva- *L.V.* *gva-* *L.V.*

Leo. *

A. Sx.

Pno.

30

sfz *ddd* *mf* *mp*

W102 *A/8c + c3*

W93 *A/G#+c1,2*

Ce

gva- *L.V.* *Ord.*

pp *A II*

sfz *pp* *p*

Leo. *

Inside piano

Sweep softly with fingertips across strings in approx. given register.

A. Sx. *f* *mf* *f*

Pno. *mf* *8va* L.V. *L.V.*

* *Ped.* * *Ped.*

A. Sx. *p* *mp* *f* *sub* *pp* *f* *mf*

Pno. *L.V.* *L.V.* *sfz* *mp*

(Keep Ped down) * *Ped.*

W46 A/Bb - 7 + Tc

W93 A/G#+c1,2

C Da

W(50)
A/Bb - 6 + Tc

W(100)
A/8bP + c3

W(3)
A/Bb + Eb

A. Sx.

45

p *f* *mf* *f* *sub* *ppp* *pp*

Ce
Cb
8
Ce

Pno.

45

mf
A II

pp
A II

* Leo.

W(93)
A/G#+c1,2

W(7)
A/C - 6

A. Sx.

51

Da C Da
mf < *sfz* *p* > *pp* < *f* > *mp* *p* *pp* *f*

subtones

Cb 8 Da
Ce

Pno.

51

* Leo.



A. Sx. **B** *ff* *mf* *pp* *p* *mp* *pp* *f* *mf*

W(24)
A/Bb - 3

W(27)
A/Eb + Bb - 3

Pno. *mp* *pp* *mp*

* Led. * Led. * Led. *

A. Sx. *p*

W(9)
A/8E + B

Pno. *mf* *p*

L.V. (L.V.)

* Led. * Led. * Led. *

A. Sx.

Pno.

66

mp

cresc.

mf

sfz

f

sfz

mf

cresc.

f

sfz

8va

L.V.

L.V.

L.V.

L.V.

L.V.

L.V.

Ped.

** Ped.*

** Ped.*

** Ped.*

A. Sx.

Pno.

69

f

mf

sfz

mp

sfz

p

L.V.

(L.V.)

L.V.

L.V.

Ped.

** Ped.*

Ped.

A. Sx. *mf* *p f* *p*

Pno. *mf* *f* *8va* L.V. *8va* L.V.

A. Sx. *bisbigl.* *mp* *mf* *p* Chromatic "gliss"

Pno. *mp* *8va* L.V. *8va* L.V. *ped.* (Keep Ped down) *ped.*

A. Sx. *pp* *mf* *mp* *pp*

Tr (If no other information is given: Trill halfstep up from maintone)

Chromatic "gliss"

Pno. *pp* *L.V.* *L.V.* *L.V.*

8va

Lead. (Keep Ped down)

A. Sx. *mp* *pp* *mf* *f* *pp*

bisbigl. start *Tr* SLOW accell. *twds* very FAST

subtones

W7 *A/C - 6*

Da *8* *Ce* *Cb*

Pno. *p* *L.V.* *L.V.* *mf* *A II*

Sweep softly with fingertips across strings in approx. given register.

Lead. (Keep Ped down)

C *Tempo II*

♩ = 84
S.T.

A. Sax. *sfz* *sfz* *sfz* *sfz* simile 3

Pno. *mp* Mute notestring close to damper. Play on given key.

91

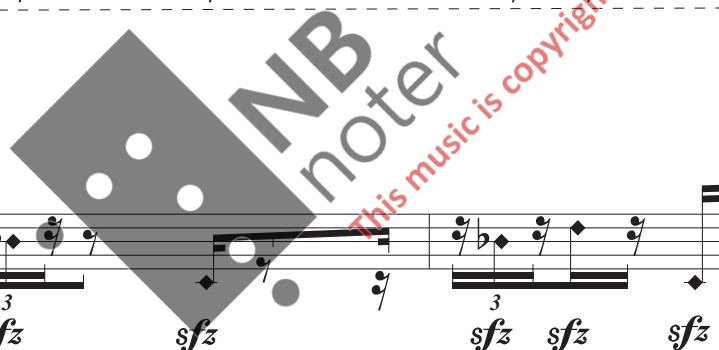
8vb

A. Sax. *sfz* *sfz* *sfz* *sfz* *sfz* *sfz* *sfz* *sfz* *sfz* 3

Pno. 3 3 3 3 3 3 3 3 3 3 3 3 3 3

93

8vb



(S.T.)

95

A. Sx.

sfz sfz sfz sfz sfz sfz sfz sfz

Pno.

8vb

97

simile

A. Sx.

sfz sfz sfz sfz sfz sfz sfz sfz sfz sfz sfz

Pno.

8vb

A. Sx. 99 *sfz sfz sfz sfz sfz sfz sfz sfz sfz sfz sfz sfz*

Pno. 99 *cresc. mf*

8^{vb}

A. Sx. 101 *sfz sfz sfz sfz sfz sfz sfz sfz sfz sfz sfz sfz*

Pno. 101 *cresc. f sub p Play ordinar if muting is not available. mf Ord. 3*

8^{vb}

Red.

K 50

K 27

K 15

A. Sax.

103 *mf*

Ba

Pno.

103 L.V. *f* L.V.

p *mp*

pp *p*

*Led.

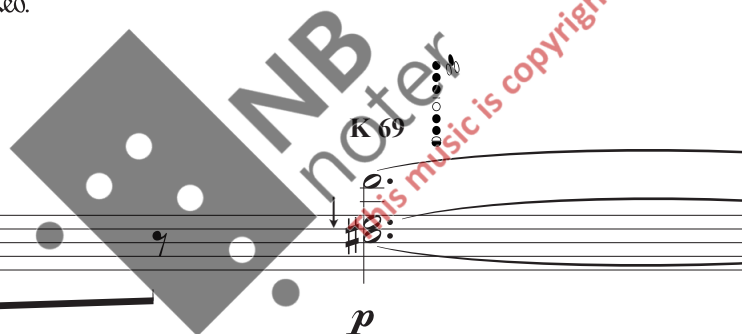
A. Sax.

106 *p*

Pno.

106 *pp* *p*

*Led.



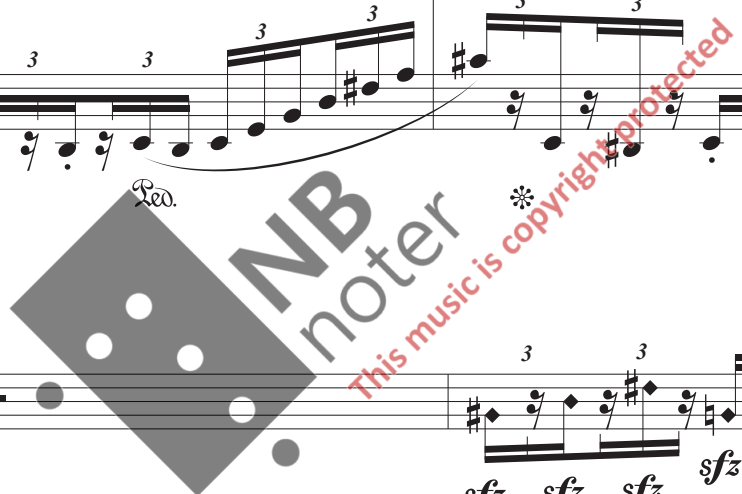
D

A. Sx. *S.T.*
Musical notation for Saxophone with triplets and *sfz* dynamics.

Pno. *109*
Musical notation for Piano with triplets, *sfz*, *mf*, and *f* dynamics, and *ped.* markings.

A. Sx. *111*
Musical notation for Saxophone with triplets and *sfz* dynamics.

Pno. *111*
Musical notation for Piano with triplets, *f*, *mf*, *cresc.*, and *sfz* dynamics, and *ped.* markings.



113 (S.T.)

A. Sx. *sfz* *sfz*

Pno. *mp* *mf* *mf* *mp* *mf*

115

A. Sx. *sfz* *sfz* *sfz* *sfz*

Pno. *f* *mf*

(S.T.)

117

A. Sx.

sfz

sfz

sfz

Pno.

mp

mf

cresc.

Red.

119

A. Sx.

f mp f mp f mp f

ff

8va

Pno.

f

f

Red.

*

A. Sx. 122 *p* *mf*

Pno. 122 *p* *mf*

Mute notestring close to damper. Play on given key.

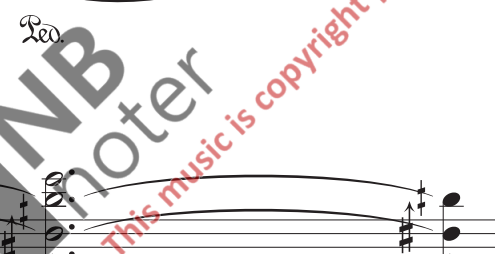
A. Sx. 124 *f* *mp*

Pno. 124 *f* *mf* *Ord.* *sost. ped.*

A. Sx. 127

Pno. 127

end of sust. ped.



A. Sx. 130

Pno. 130

*Ped.

*Ped.

A. Sax. *133*

Pno. *133* *mp*

3 3 3 3 3 3 3 3

** Ped.*

A. Sax. *135*

Pno. *135* *f* *mf* *f* *mf*

7 3 3 7

** Ped. 3 3 3 3 3 3 3 3 Ped. **

A. Sx. 137 *f* *mf* *f* *mf* *f*

Pno. 137 *sfz* *mp* *cresc.*

A. Sx. 139 *p*

Pno. 139 *f* *mf* *f*

A. Sax. **F**

141

f mp f mp

p mp

A. Sax.

143

f mp f sfz

mp sfz mp cresc.

Led.

A. Sx. 145 *mf* *f* *cresc.* *ff* *mf*

Pno. 145 *sfz*

Mute notestrings close to damper. Play on given key.

A. Sx. 147 *f* *mp* *mf* 5

Pno. 147 *mp* simile 3 3 3 3 3 3 3 3

A. Sx. *f* *mf* *f* *ff*

* (Altissimo) *8va-*

Pno. *mf* *f*

3 3 3 3 3 3

149

A. Sx.

Pno. *p*

3 3 3 3 3 3 3 3 3 3 3 3

151

*Ped. *Ped. *Ped. *Ped. *Ped.

A. Sax. **K 12**

153 *mf* *mp*

Pno. 153 L.V. L.V.

From bar 153 - letter G: Adjust pedal according to the balance with the saxophone.

* Ped.

A. Sax. **K 116**

155 *p* *pp* *p*

Pno. 155 *mp* *cresc.* *f* *subito p*

* Ped. * Ped. * Ped.

A. Sx.

157

K 13

mf

Pno.

L.V.

mf

f

dim.

mp

mf

p

* Ped.

A. Sx.

160

K 27

Pno.

160

p

mf

p

* Ped.

A. Sx. *mf* *mp* K 6

Pno. *mp* *pp*

A. Sx. *p* D/B 8 Ce

Pno. *mp* L.V. L.V. L.V. L.V. * *ped.* * *ped.*

A. Sx. *p* 166

Pno. (L.V.) *mf* 166

*p*³ L.V.

K 57

A. Sx. 168

Pno. (L.V.) *pp* 168

*mf*³ K 134

pp

G ♩ = 84

A. Sax. *mp* *mf* *f* *mp* *mf*

Pno. 170 *mf* *f* *mf*

A. Sax. 172 *f* *ff* *mf* *cresc.* *f*

Pno. 172 *f* *f*

Red.

A. Sx. 174 *cresc.* *ff* *ff* *8va*

Pno. 174 *ff* *ff* *ped.* *ped.*

A. Sx. 176 *p* *mp* *mf* *f* *3* *3* *3* *7* *8va*

Pno. 176 *mp* *mf* *f* *8va* *8va* *8va* *ped.* *ped.* *ped.*

A. Sx. 178 *cresc.* *ff* *mf* *f* *ff* *8va*

Pno. 178 *f* *ff* *Red.*

A. Sx. 180 *mf* *f* *f* *ff* *8va*

Pno. 180 *ff* *Red.*

A. Sax. ** different trills/tremoli* *gliss with trill/trem.* **H**

183 *mp* *mf* *f* *mp* 3 3 3 3

Pno. 183 *mf* *f* *Ped. *Ped.

A. Sax. 187 *subtones* *p* *mf* *mp* *p* *pp* *subtones*

Pno. 187 *ppp* *ppp* *u.c.* *u.c.*

A. Sx. 190 *mf* *ff* *8va*

Pno. 190 *mf*

A. Sx. 192 *ff* *p* *mp* *mf* *f* *mf* *mp* *8va*

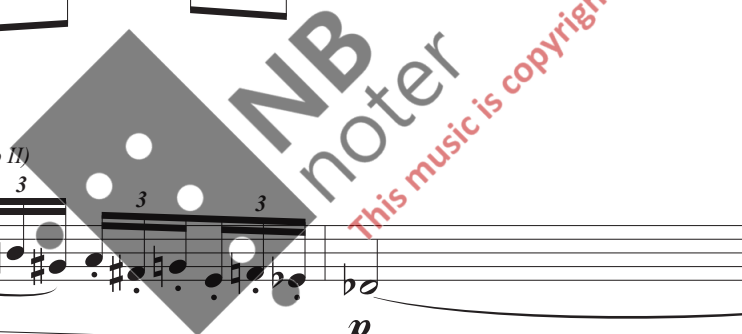
Pno. 192 *f* *mf* *mp* *secco*

A. Sx. *mp* 195 *mf* *f* *ff* *f* *mf* *rit.*

Pno. *mf* *f* *ff*

A. Sx. *mp* *rit.* *a tempo (Tempo II)* *p*

Pno. *mf* *mp*



199

A. Sx.

Pno.

p

sfz

3 3 3 3 3 3 3 3 3 3 3 3

ped. *8vb*

201

A. Sx.

mf

bisbigl.

start Tr SLOW accell. twds very FAST

sfz

201

Pno.

L.V.

sfz

(keep Ped. down)

206

A. Sx. *Produce short,subtones randomly and as fast as possible within the given notes making interval jumps avoiding a scale-feeling.*

Pno. **Inside piano** *Use both hands tapping with fingertips on strings in given register.* *Sweep softly with fingertips across strings in approx. given register.* **L.V.**

sfz *Mute notestring close to damper. Play on given key.*

8vb
Leo.

209

A. Sx. *mf* *pp* (Ord.)

Pno. **Ord.** **L.V.** *Arpeggio I: f Fast and anticipated* *pp Arpeggio II: Slow, starting on the beat*

8va
Leo.

NB
noter
This music is copyright protected

A. Sax. **K 102** *p* *p* *mp* *bisbigl.*

Pno. *pp* *A II* *mp* *p* *A II*

Red. * *Red.* * *Red.* * *Red.* * *Red.* *

A. Sax. *mf* *p* *mf* *f* *p* *subtones* *Ord.*

Pno. *mf* *Arpeggio I: Making the last note play together with the first note in the sax.-part.* *mf*

Red. * *Red.* *

A. Sx.

220

fr

mp

p

Pno.

220

pp

A II

mp

A II

Ped.

*

*

bisbigl.

L Ab2 p.54

A. Sx.

224

pp

mp

Pno.

224

p

A II

pp

A II

Ped.

*

*

J *Tempo II* ♩ = 84

228

A. Sx. *mf* *p* *mp* Ba

Pno. *8va-1* L.V. *p* *mp* *pp* *p*

233

A. Sx. *p* *p* *p* *p* K 69 K 27 K 116

Pno. *pp* *p* *p* *p* *Led. *Led. *Led.

K 134

A. Sax. *mf* *mf* S.T. *sfz* *sfz* *sfz* *sfz* *sfz* *sfz* *sfz* *sfz*

Pno. *p* *f* *mf*

* *Leg.* * *Leg.*

A. Sax. *sfz*

Pno. *f* *mf* *cresc.* *sfz* *mf*

* *Leg.* *

243 (S.T.)

A. Sx.

Pno.

mp *mf* *mp* *mf* *mp* *mf*

sfz *sfz*

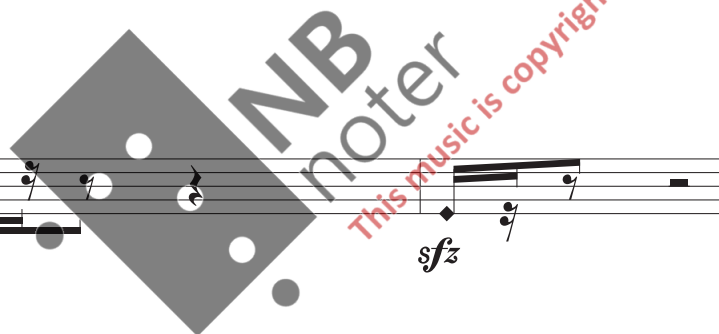
245

A. Sx.

Pno.

sfz *sfz* *sfz* *sfz*

f *mf*



(S.T.)

A. Sx. *sfz* *sfz* *sfz*

Pno. *mp* *mf* *cresc.*

A. Sx. *f mp f mp f mp f* *f mp ff*

Pno. *f* *f* *8va* *f* *Leo.*

** Leo.*

A. Sax. *subtones*

252 *p* *mf* *f*

Pno. *p* *f* *8va*

Mute notestring close to damper. Play on given key.

3 3 3 3 3 3 3 3 3 3 3 3 3 3 3 3 3

ped.

A. Sax. *cresc.* *ff* *mf*

255 *ff* *mf* *f* *8va*

Pno. *p* *f* *8va*

Mute notestring close to damper. Play on given key.

3 3 3 3 3 3 3 3 3 3

ped.

A. Sx. 257 *f* *mp* *mf* *f*

Pno. 257 *p* *mp*

8va

Red. *

A. Sx. 259 *f* *ff* *p*

Pno. 259 *f* *ff* *p*

8va

L.V. (L.V.)

Red. *

K *Tempo I* **W(93)**
 ♩ = c. 120 A/G#+c1,2

A. Sx. *subtones*

C Da

pp f mp p pp

263

Pno.

pp

Leo.

W(7)
A/C - 6

Cb

pp

A. Sx.

8 Ce Da

f ff mf pp p mp

267

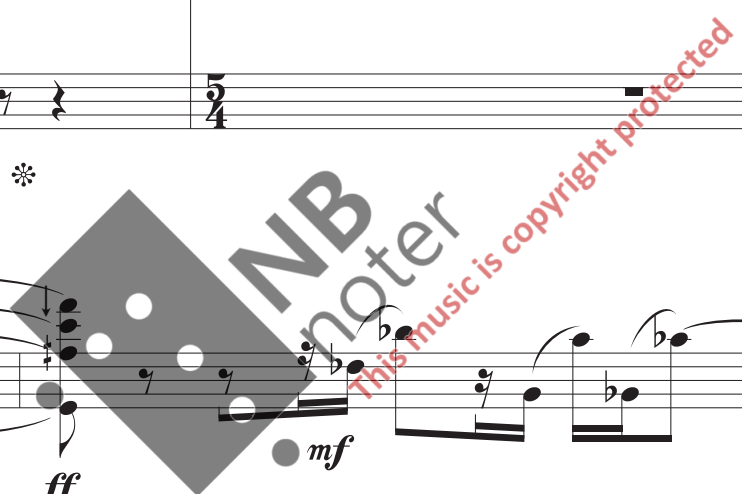
Pno.

p

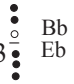
Leo.

W(24)
A/Bb - 3

Ce

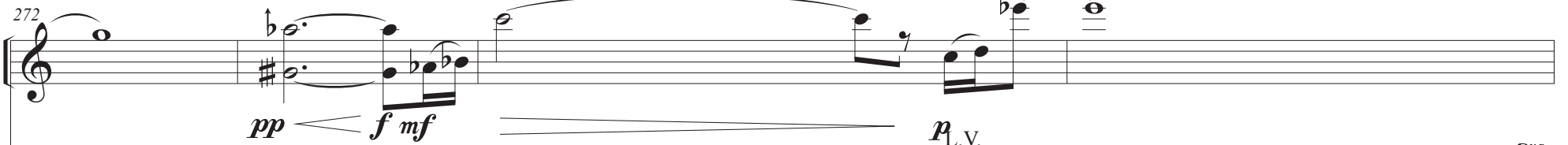


W(27)
A/Eb + Bb - 3




Bb
Eb

A. Sx.




Pno.



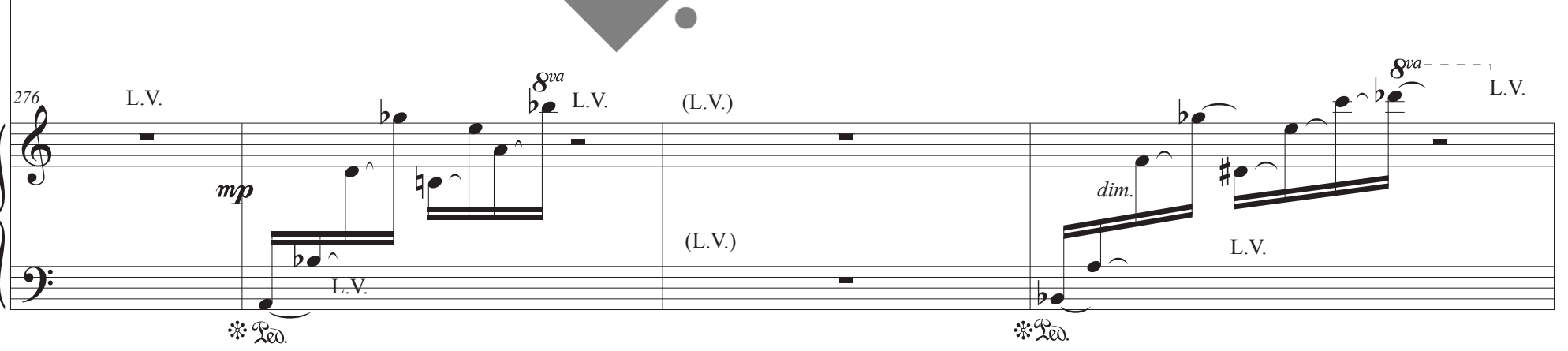
mp *mf* *p* L.V. *8va*

Led. * Led. * Led.

A. Sx.



Pno.



mp *mf* *p* *Chromatic "gliss"*

L.V. *8va* L.V. (L.V.) *8va* L.V. *dim.* L.V. *8va* L.V.

* Led. * Led.

A. Sx.

Pno.

280

mf

cresc.

f

cresc.

8va

8va

8va

8va

L.V.

L.V.

L.V.

L.V.

L.V.

L.V.

**Ped.*

**Ped.*

**Ped.*

(L.V.)

A. Sx.

Pno.

284

bisbigl.

start Tr SLOW accell. twds very FAST

mp

pp

Inside piano

mf

p

subtones

L.V.

L.V.

L.V.

L.V.

Sweep softly with fingertips across strings in approx. given register.

(Keep Ped down)

**Ped.*

**Ped.*

288

A. Sx.

f Da *pp* Ce *sfz* *sfz*

W7
A/C - 6

S.T.
3

Pno.

mf *p* *pp* *p* *mp* *sfz*

Red. * *Red.* * *Red.* * *Red.* *

292

A. Sx.

sfz *sfz* *mf* *cresc.* *f*

(S.T.)
3

(Ord.)
3

8va

Pno.

mf *sfz* *sfz* *p* *sfz* *mp* *cresc.* *sfz* *mf* *sfz*

L.V.

Mute notestring close to damper. Play on given key.

Red. * *Red.* * *Red.* * *Red.* *

8vb