

Ragnan Söderlind:

5 Songar

til tekstar av

Åse-Marie Nesse

Opus 39

1983

Song og piano

Sopran/tenor



Åse-Marie Nesse | Til NiM Ein Gong
1978 Andante rubato

Kayman Söderlind
1985 Op 39 Nr 3

Song

mp
Ein gong ik - kie en - næ

Piano

p mp f z

mp
ein gong dre si - da

p mp f z

mp
ar den - ne hø ge sol f som

poco string f Ped

f
blen - dar hjar - ta f og ten - ner rød mu - sikk

f Ped

Handwritten musical score for the first system. It features a vocal line and a piano accompaniment. The lyrics are "i al-le rom". The piano part includes a 5/4 time signature and dynamic markings such as *pp*, *mp*, and *p*. There are also performance instructions like *Tempo mp* and *Secco*.

Handwritten musical score for the second system. The lyrics are "ein gong - nar ster-ne-he tar dimly-set på og". The piano part includes a 4/4 time signature and dynamic markings like *pp* and *mp*. Performance instructions include *Tempo mp*, *pu p poco piu mosso*, and *Con Ped*.

Handwritten musical score for the third system. The lyrics are "sak kar på jar - ten før dei". The piano part includes a 3/4 time signature and dynamic markings like *mp* and *pp*. Performance instructions include *poco a poco rit -* and *edim*.

Handwritten musical score for the fourth system. The lyrics are "f sell". The piano part includes a *Quasi Cadenza* section. The system concludes with a *Ped* instruction and a circled number **2**.

tempo I *mp* lugubre

ein gong när skuggen ar döden storsom ein mørke sy

-press i næ-ras-te ha - - ge -

ein gong

skal væ-re ve - gar at ter mp - tast

vi-te at dei at dri kun - ne

ossia 3 ossia 3

p *p* *mp* *p* *mp* *mf* *prof* *mp* *mf* *prof* *mp*

tr. mm

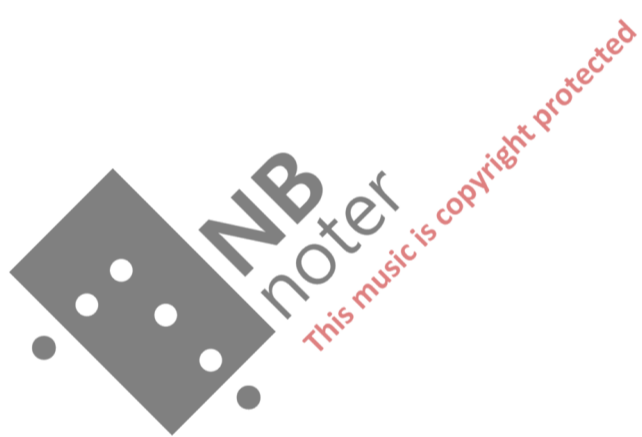
mp - 5

3

Handwritten musical score for three staves. The top staff is in treble clef with a key signature of one sharp (F#) and a dynamic marking of *mf*. The middle staff is in bass clef with a dynamic marking of *mf*. The bottom staff is in bass clef with a dynamic marking of *mf* and the instruction "Con Ped". The lyrics "skil - last" are written above the middle staff. The score includes various musical notations such as notes, rests, and a triplet of eighth notes in the middle and bottom staves. The word "nicht" is written at the end of the piece.

Fine Storeisen 8/10 85





Ae-Marie Nense | 1978

Utgåve for Sopran

På botnen av alt

Ragnar Söderlund Op 39 Nr 2, 1983

Andante

Song *tranne oppr.*
mp
Pa bot-nen av all kjer-leik er det

Piano *mp* *mf* *p*
ped *pp*
non cresc

p ein-send
non oppr Ein og ein
poco a poco oppr går vi gjen-nom por-le

p
poco a poco rit.
ppp

mp -por-tar o-ver regn-bo-ge bru-er
mf fell vi ned i svar-te

p (= ε) *mf*
poco libero

p #d. djup
p Ein og ein går vi den sma-le

p
pp *ped.* *p*
arco *basso*

ve-gen til dø-den. På bot-nen av all lengsel er vi

mp *p*

sa-man. To og to kris-krar vi om rø-de ro-ser

mf *p* *mp* *mp*

Fin mosso

mju-ke mor-se vid-der stikk vi oss på tor

f *expr.* *cresc.*

To og to gitt vi vårt hjer-te blod til vin-den.

p *mf* *mp* *mp*

molto cresc.

ATACCA

Piu mosso

molto espr.

Pa bot-ten av all lyk-ke er det smer — te

Ar M.G. for

ff *f* *f*

är sam-lar vi i la — der kom og tom — me

f

ag — ner et vårt bröd med tai — rer P Ar for

mf

ff *p* *con ped*

är læ-rer vi om li — vets salt og gå — ter

pp *lunga*

mp

Tempo I

mp *espr* På bot-nen av alt liv er det

mp *mf* *cresc.*

Ped P Ped

Poco libero *cresc* 3-7
P Dag for dag løft-ter vi vårt brenn-an-de

f *lacr.* *quasi gran Cassa*

sempre *tra barca e Ped* *tra*

mp *P*
Infand-let strar vi vår pan-ne søkke vi mel-lom

p *pp* *pp*

P skug-gar Dag for dag må vi spreng-je oss ut av

p *pp* *pp* *pp*

mp *P* *Poco cresc.*

Handwritten musical score for voice and piano. The score is written on three staves. The top staff is for the voice, the middle for the piano, and the bottom for the bass. The music is in 2/4 time and features a key signature of one flat (B-flat). The lyrics are written below the voice staff.

Lyrics: mpr-keet lik stjer - ner

Performance instructions: *ppoco S*, *mf*, *loco*, *dim e rit* poco a poco*, *ppp*

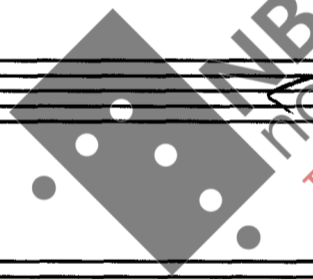
Other markings: *3*, *8va basso ped*, *mf*, *mf*

* Meir og meir improvisarisk og uregelbunden

* more and more improvisation and irregular.

Tine Arnebråten 26/10 1983

transposisjon 12/7 1985



This music is copyright protected

10

Ase-Marie Nerse
1978

Til Ase-Marie
Andante libro

legg ikkje ditt liv i mi hand

Kaynar Söderlind
Op 39 Nr 3
1983

Song

legg ikkje ditt liv i mi hand om min kjærleik er svar

Piano

P *meno p* *P* *3* *par espr.*

min kjærleik er og så eit rop i motvind

mf espr. *mf* *P* *mf* *P*

Andante fluente

legg ein blom i mi hand ein tu-sen styd i dag ein

mp *mf* *mp*

fis-tel i mor-gon og den læ-kjan-de urt

P *fz*

Handwritten musical score for the first system. The vocal line (treble clef) has lyrics: "som veko av ta ter". The piano accompaniment (grand staff) includes dynamic markings *p sub.*, *mp*, and *fz*. A triplet of eighth notes is marked with a '3' above it.

Handwritten musical score for the second system. The vocal line has lyrics: "loggein sugl i mi hand". The piano accompaniment includes dynamic markings *pp*, *p*, and *mp*. A tempo change is indicated as "A tempo fluente". Pedal markings "Ped." are present in both staves.

Handwritten musical score for the third system. The vocal line has lyrics: "ein pjus-ket li-ten sugl sa stryk eg han vak ker og". The piano accompaniment includes dynamic markings *mf*, *mp*, and *p*. A watermark "IMBnotes" is visible across the score.

Handwritten musical score for the fourth system. The vocal line has lyrics: "le-ter han a Jy ge Kom til". The piano accompaniment includes dynamic markings *mf fz* and *mp*. A "Parl." (Parlando) marking is present above the vocal line.

Poco piu mosso

ba-ke når du vil. legg di hand i mi hand

mf - 3 7

PP PPP mf mp mf

Grandioso sa er vi ster-ke sa-man dolce mit sa er vi sva-ke sa-man

ff mp p

Adagio sa er vi sa-man Parlando mf men tyng meg ik-kje ned ned din kjær-leik

p mf sfz

Andante libro legg ik-kje ditt liv i mi hand lev sylv

mf sfz mp sfz

Fine 14/383

mf

(13) 5