

"RIDDLES"

for

Violin, Viola, Violoncello,
Piano, Percussion and
& Tape.

by

Helge Havnsgaard Sunde

" RIDDLES "

< 1 >

Helge Haugård Sande

(Senza misura...)

VIOLIN
1
pizz.
sfz
arco!
p

VIOLA
jetee ord. >>> sul tasto...
ff
mp

V. CELLO
p
mf

PIANO
ff
mf
arco string w/ tambo;
< niente >
molto cresc. et accel...

Glock. 50.
PERC.

Crotales
PERC. 2
Bowed

4

3

3

Jetee : col legno -ord. >>> sul tasto... **Allegro** ♩ = 120 **arco !**

VIOLIN *pizz.* *fp*

VIOLA *gliss...* *fp*

V.CELLO *Jetee : col legno -ord. >>> sul tasto...* *pizz.* *arco !* *fp*

PIANO

PERC. 1 *Marimba*

PERC. 2 *Vib.* *motor off.* *fp*

3-1/2

3

VIOLIN

5 *f* *< Jetee >* 6 7



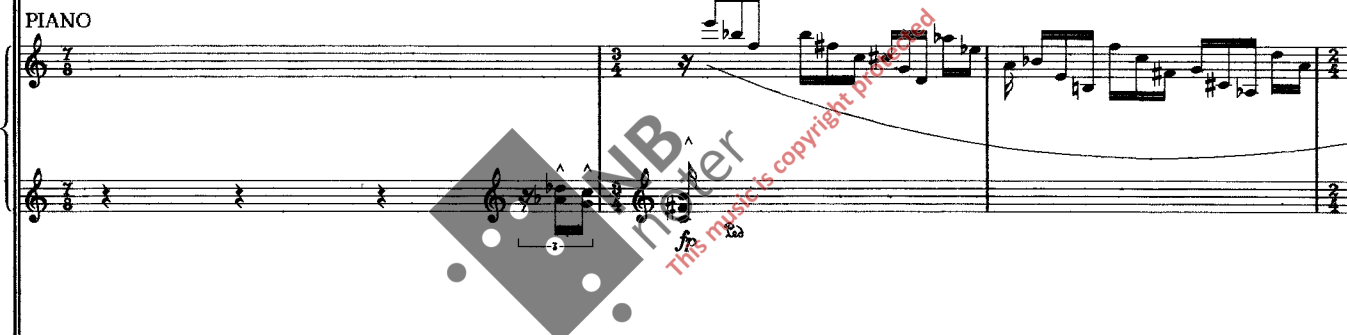
VIOLA



V. CELLO



PIANO



PERC. 1

fl. sp.



PERC. 2

tbl. *tbl.*



2

3

poco rit...

<nono rosso>

VIOLIN

8 9 18

Musical staff for Violin, measures 8-18. Measure 8 has a whole rest. Measure 9 has a whole rest. Measure 10 has a whole note G4. Measure 11 has a whole note A4. Measure 12 has a whole note B4. Measure 13 has a whole note C5. Measure 14 has a whole note D5. Measure 15 has a whole note E5. Measure 16 has a whole note F5. Measure 17 has a whole note G5. Measure 18 has a whole note A5. Dynamics: sfz.

VIOLA

Musical staff for Viola, measures 8-18. Measure 8 has a whole rest. Measure 9 has a whole rest. Measure 10 has a whole note G3. Measure 11 has a whole note A3. Measure 12 has a whole note B3. Measure 13 has a whole note C4. Measure 14 has a whole note D4. Measure 15 has a whole note E4. Measure 16 has a whole note F4. Measure 17 has a whole note G4. Measure 18 has a whole note A4. Dynamics: sfz.

V.CELLO

Musical staff for Violoncello, measures 8-18. Measure 8 has a whole rest. Measure 9 has a whole rest. Measure 10 has a whole note G2. Measure 11 has a whole note A2. Measure 12 has a whole note B2. Measure 13 has a whole note C3. Measure 14 has a whole note D3. Measure 15 has a whole note E3. Measure 16 has a whole note F3. Measure 17 has a whole note G3. Measure 18 has a whole note A3. Dynamics: sfz.

PIANO

Musical staff for Piano, measures 8-18. Measure 8 has a quarter note G4, quarter note A4, quarter note B4, quarter note C5. Measure 9 has a quarter note D5, quarter note E5, quarter note F5, quarter note G5. Measure 10 has a quarter note A5, quarter note B5, quarter note C6, quarter note D6. Measure 11 has a quarter note E6, quarter note F6, quarter note G6, quarter note A6. Measure 12 has a quarter note B6, quarter note C7, quarter note D7, quarter note E7. Measure 13 has a quarter note F7, quarter note G7, quarter note A7, quarter note B7. Measure 14 has a quarter note C8, quarter note D8, quarter note E8, quarter note F8. Measure 15 has a quarter note G8, quarter note A8, quarter note B8, quarter note C9. Measure 16 has a quarter note D9, quarter note E9, quarter note F9, quarter note G9. Measure 17 has a quarter note A9, quarter note B9, quarter note C10, quarter note D10. Measure 18 has a quarter note E10, quarter note F10, quarter note G10, quarter note A10. Dynamics: ff. *Inside Piano* marking.

PERC. 1

Musical staff for Percussion 1, measures 8-18. Measure 8 has a quarter note G4, quarter note A4, quarter note B4, quarter note C5. Measure 9 has a quarter note D5, quarter note E5, quarter note F5, quarter note G5. Measure 10 has a quarter note A5, quarter note B5, quarter note C6, quarter note D6. Measure 11 has a quarter note E6, quarter note F6, quarter note G6, quarter note A6. Measure 12 has a quarter note B6, quarter note C7, quarter note D7, quarter note E7. Measure 13 has a quarter note F7, quarter note G7, quarter note A7, quarter note B7. Measure 14 has a quarter note C8, quarter note D8, quarter note E8, quarter note F8. Measure 15 has a quarter note G8, quarter note A8, quarter note B8, quarter note C9. Measure 16 has a quarter note D9, quarter note E9, quarter note F9, quarter note G9. Measure 17 has a quarter note A9, quarter note B9, quarter note C10, quarter note D10. Measure 18 has a quarter note E10, quarter note F10, quarter note G10, quarter note A10. Dynamics: mf. *Tan* marking.

PERC. 2

Musical staff for Percussion 2, measures 8-18. Measure 8 has a quarter note G4, quarter note A4, quarter note B4, quarter note C5. Measure 9 has a quarter note D5, quarter note E5, quarter note F5, quarter note G5. Measure 10 has a quarter note A5, quarter note B5, quarter note C6, quarter note D6. Measure 11 has a quarter note E6, quarter note F6, quarter note G6, quarter note A6. Measure 12 has a quarter note B6, quarter note C7, quarter note D7, quarter note E7. Measure 13 has a quarter note F7, quarter note G7, quarter note A7, quarter note B7. Measure 14 has a quarter note C8, quarter note D8, quarter note E8, quarter note F8. Measure 15 has a quarter note G8, quarter note A8, quarter note B8, quarter note C9. Measure 16 has a quarter note D9, quarter note E9, quarter note F9, quarter note G9. Measure 17 has a quarter note A9, quarter note B9, quarter note C10, quarter note D10. Measure 18 has a quarter note E10, quarter note F10, quarter note G10, quarter note A10. Dynamics: mf. *trcs.* marking.

sal p

VIOLIN

11

12

13

14

VIOLA

sal pont. ----->

ard. ----->

sal teste...

V. CELLO

vizz.

arco !

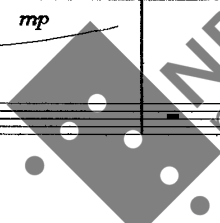
sal pont. ----->

sa

sfx *p*

Have w/ thumb at end of string, they gliss... >

PIANO



This music is copyright protected

mp

fp

PERC. 1

scraps w/ hard mallet

(soft mallets)

tr

fp

sempre legato

PERC. 2

♩ = 132

sal pont. ->
VIOLIN

sal tasto

*sal pont. > to sal tasto (and vice versa) on each bow
accent when changing bow-directions...* 18

15 16

sempre legato... *p*

*sal pont. > to sal tasto (and vice versa) on each bow
accent when changing bow-directions...*

sempre legato... *p*

sal tasto
V.CELLO

*sal pont. > to sal tasto
accent when changing bow*

sempre legato

PIANO

lib.
Inside Piano...

sempre

PERC. 1

PERC. 2

mp

VIOLIN

19

20

21

22

23

VIOLA

V.CELLO

PIANO

PERC. 1

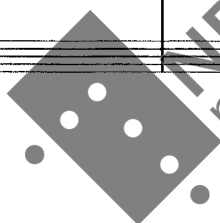
PERC. 2

to sul tasto (and vice versa) on each bow

mf p

mf p

mf p



This music is copyright protected

VIOLIN 24 25 26 27 28

mf *p* *mf* *p*

VIOLA

mf *p*

V.CELLO

mf *p* *mf* *p* *mf* *p* *mf* *p*

PIANO

PERC. 1

PERC. 2

NB
noter
This music is copyright protected

VIOLIN 29 30 = 100 31 **pizz.** **arc**

VIOLA **pizz.**

V.CELLO **pizz.** **ff**

PIANO

PERC. 1 **ff** **mf**

PERC. 2 **mf** **notor off>>**

quasi senza misura

VIOLIN

arco/sul pont.

Violin staff with musical notation. Includes dynamic marking *mp* and the instruction *follow immediately after Vcl*.

VIOLA

arco/sul pont.

Viola staff with musical notation. Includes dynamic marking *mp* and the instruction *follow immediately after Vcl*.

V.CELLO

arco/sul pont.

pizz!

Violoncello staff with musical notation. Includes dynamic marking *mp* and the instruction *pizz!*.

PIANO

Piano staff with musical notation. Includes dynamic marking *mp* and the instruction *>>> motor on*.

PERC. 1

mp

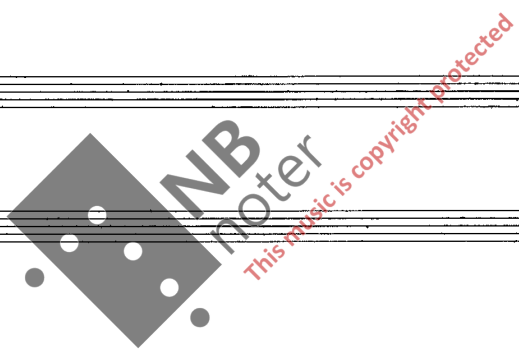
Percussion 1 staff with musical notation. Includes dynamic marking *mp*.

PERC. 2

ffcs.

fp

Percussion 2 staff with musical notation. Includes dynamic marking *fp* and the instruction *>>> motor on*.



VIOLIN
33

VIOLA

V.CELLO

PIANO

accelerando - - - - - *rit. a rit.* - - - - -

ppp

PERC. 1

PERC. 2

4 = 120

♩ = 80

VIOLIN

accel...

Lento

accel...

34 *f* *mp* 35 36

VIOLA

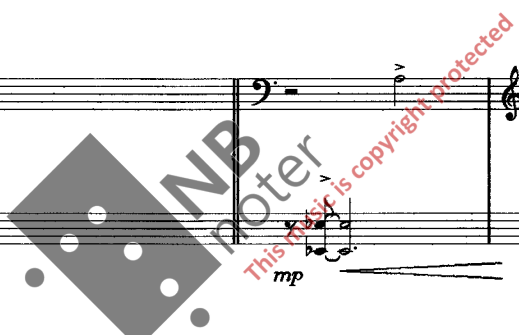
f *mp*

V.CELLO

f *mp*

PIANO

ff *p* *mp*



PERC. 1

PERC. 2

= 72 **3** **3-1/2** = 128
Violino Lento **a Tempo**

VIOLIN
 37 *f* *p* 38 39

VIOLA
f *p*

V CELLO
f *p*

PIANO
sfz

PERC. 1
Maracas
fp

PERC. 2
Vib.

4 (Presto)

3



senza misura

< Jetee >

Rep.til cue.

VIOLIN

48

41

42

f

accents ad lib.

VIOLA

f

accents ad lib.

V.CELLO

f

accents ad lib.

PIANO

Rep.til cue

accents ad lib.

-CRSC. poco a poco - - - - -

PERC. 1



Percussion "Chase"

initate echo.N/equal ins.

PERC. 2

Percussion "Chase"

initate echo.N/equal ins.

↓ s.m.

Vla/Perc.

VIOLIN

43

VIOLA

V. CELLO

PIANO

PERC. 1

PERC. 2

NB noter

This music is copyright protected

Viol

Pno/Perc

VIOLIN 48 *jetee : col legno -ord. >>> sul tasto...* 49

VIOLA *jetee : col legno -ord. >>> sul tasto...*

V. CELLO

PIANO

PERC. 1

PERC. 2 *grat.*

↓ ↓ ↓ 3 ↓ ↓

VIOLIN
58 *follow immediately after Via* 51 *ff* 52 *senza misura* *fp*

VIOLA
follow immediately after Via

V. CELLO
vizz. *arco* *tr* *fp*

PIANO
quasi trillo

PERC. 1
Chase (like bar 42)

PERC. 2
HindChings *Chase (like bar 42)*

VIOLIN
53

VIOLA

V.CELLO

PIANO

PERC. 1

(+ piano)

PERC. 2

(+ piano)

$\text{♩} = 128$

3

VIOLIN

54 55 56 57 58

VIOLA

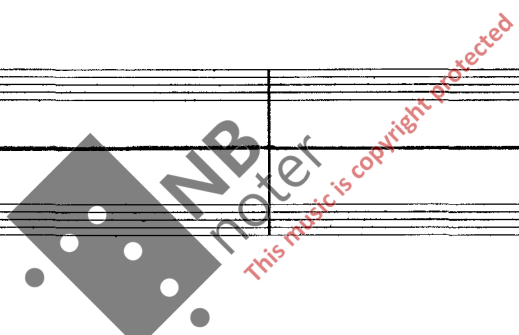
from al pont. to sul tasto and vice versa (on each bowing)

V. CELLO

PIANO

PERC. 1

PERC. 2



Vcl
Vla
Vln

senza misura

VIOLIN
59

sal tasto ;

mp f

sal tasto ;

VIOLA

pizz!

(arco)

mp f

sal tasto ;

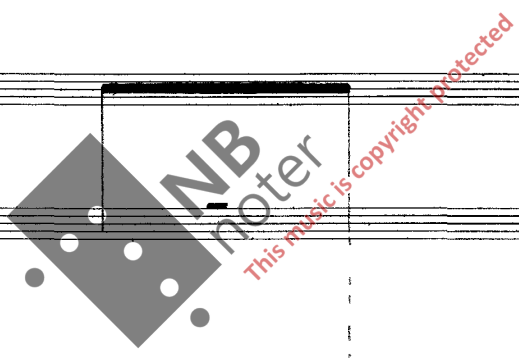
V.CELLO

< jete >

PIANO

PERC. 1

PERC. 2



Pa/Parc

stop playing nr: 5 4 3 2 3 1 ---->

♩ = 128

rit...

VIOLIN

60 61 62 63 64 65

VIOLA

V.CELLO

PIANO

p

PERC. 1

PERC. 2

senza misura

Vcl

VIOLIN = 68

accent when changing bow direction

VIOLA

V.CELLO

PIANO

PERC. *ff.*

PERC. *ff.*

VIOLIN 74 *jetee : col legno -ord. >>>sal tasto...* (Random pitch...)

VIOLA *jetee : col legno -ord. >>>sal tasto...* (Random pitch...)

V. CELLO *jetee : col legno -ord. >>>sal tasto...* (Random pitch...)

PIANO

PERC. 1

PERC. 2

TAPE start

Crossfade w/ TAPE

76

VIOLIN
75

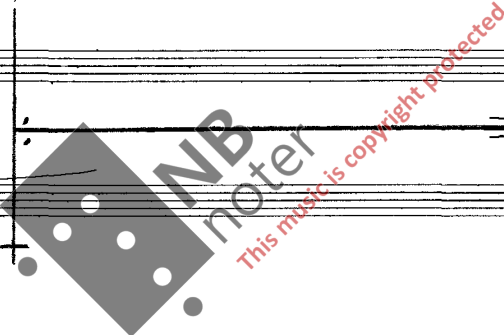
VIOLA

V.CELLO

PIANO

PERC. 1

PERC. 2



< TONE >

VIOLIN
77

< ca. 4'30" >

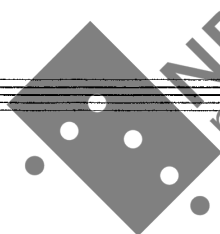
VIOLA

V.CELLO

PIANO

PERC. 1

PERC. 2



This music is copyright protected

Pno/Perc

VIOLIN
Tapp : Fade out

79

VIOLA

V.CELLO

PIANO
finishes inside Piano 1

<quasi gliss...>

PERC. 1

PERC. 2

Black.sp.

VIOL. *Tranquillo*

80

ppp

4

3

5

$\bullet = 120$

81

82

83

ord. - - - - - sul

VIOLA

ppp

f

pp

p

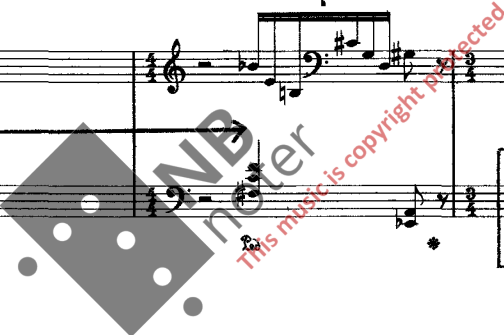
ord. - - - - - sul

V. CELLO

ppp

ord. - - - - - sul pp

PIANO



Sampler

PERC. 1

sfz



PERC. 2

4

Via Via Vcl / Perc Perc

VIOLIN

84 85 86

84 85 86

VIOLA

V. CELLO

PIANO

PIANO

PERC. 1

PERC. 1

PERC. 2

PERC. 2

NB noter This music is copyright protected

VIOLIN 87 **Cadenza I.** *pp* 88 **senza misura** *fp*

VIOLA *pizz.* *sfz*

V CELLO *pizz.* *sfz*

VIOLIN 89 *tr* *tr* *tr* *---* *sfz* *molto*

VIOLA *---* *sfz* *molto*

V CELLO *---* *sfz* *molto*



VIOLIN

90

VIOLA

follow immediately after Via

V.CELLO

follow immediately after Via



VIOLIN

91

VIOLA

f l a Via

V.CELLO

f l a Via

Violin (Vin) and Viola (Vcl) parts are indicated at the top.

VIOLIN (92): Musical notation in treble clef with a trill (tr) marked in a box.

VIOLA: Musical notation in alto clef, mostly blank.

V. CELLO (92): Musical notation in bass clef.

in unison with basis in these tones

VIOLIN (93): Musical notation in treble clef with a tremolo effect.

VIOLA: Musical notation in alto clef.

V. CELLO (93): Musical notation in bass clef with the instruction **in tempo**.

Measures 94 and 95 are marked with a 3 and a 4 respectively.

This music is copyright protected

< Jetee >

VIOLIN 96 97 98 *fp* **individual accelrandi...**

VIOLA *fp* **individual accelrandi...**

V. CELLO *fp* **individual accelrandi...**

PIANO *fp*

PERC. 1 *Gl. sp.* *Tbl.* **individual accelrandi...**

PERC. 2 *Vib.* *Crot.* *Tbl.* **individual accelrandi...**

VIOLIN 99 100 **Rep. til cue.**

VIOLA

V.CELLO

PIANO **Rep. til cue**

CRASH, RICO & RICO

PERC. 1 **Chase**

PERC. 2 **Chase**

VIOLIN
181

Musical staff for Violin, measures 181-182. The staff contains a melodic line with various accidentals and dynamics.

VIOLA

Musical staff for Viola, measures 181-182. The staff contains a melodic line with various accidentals and dynamics.

(Cadenza 2 : Violoncello →)

V.CELLO

Musical staff for Violoncello, measures 181-182. The staff is mostly empty, indicating a cadenza.

PIANO

Musical staff for Piano, measures 181-182. The staff contains a complex melodic and harmonic line with various accidentals and dynamics.

PERC. 1

Musical staff for Percussion 1, measures 181-182. The staff contains rhythmic markings and dynamics.

PERC. 2

Musical staff for Percussion 2, measures 181-182. The staff contains rhythmic markings and dynamics.

4 ♩ = 60

Assai senza misura...

se

VIOLIN 112 113

VIOLA

V. CELLO

PIANO *ff* *mf* *poco accel...*

PERC. 2 *Crotales, bowed* *Vib.* *mf*



WCI

senza misura

VIOLIN
114

VIOLA

V.CELLO

PIANO

PERC. 1

PERC. 2

Poa/Parc.

VIOLIN
115

Jetee : col legno -ord. >>> sul tasto...

116

Jetee : col legno -ord. >>> sul tasto...

VIOLA

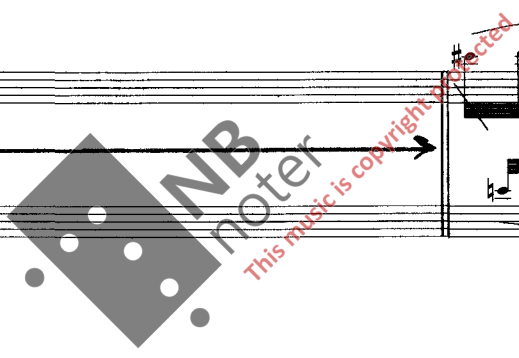
Jetee : col legno -ord. >>> sul tasto...

V.CELLO

PIANO

PERC. 1

PERC. 2



↓

VIOLIN

117

VIOLA

V.CELLO

PIANO

PERC 1

PERC. 2

