

Picc. *f* *molto*
 Cl. *f* *molto*
 Fg.
 Cor. *ff*
 Tr-ba
 Tr-ne

Solo *fff* *Furioso*
martellato
 Ped.

* Utføres med alle mellomtoner: etc.

Solo
 Tr
 Tr-ne

4.

Meno mosso (♩) Lento

Pf. mp PPP acc... rapidamente subito pp uhorlig

Ped.

Pf. p una corda PPP uhorlig

a tempo (meno mosso) molto Lento poco pp uhorlig tempo meno mosso

Ped.

Tempo I

Triangolo

Pf. mf Smorzando PPP PP dolcissimo una corda non ped.

m.s. {

PPP

Ped.

Tempo I

I V-ni Div. 4/8 con sord. PPP

II Div. 4/8 con sord. PPP

Fl. picc. *ppp*

Cl. *ppp*

Fg.

Cor.

Tr-ba

Tr-ne

Pf. *cresc. poco* *p dim.*

V-ni I *p dim.*

V-ni II

This page contains a musical score for page 5. The instruments listed are Fl. picc., Cl., Fg., Cor., Tr-ba, Tr-ne, Pf., V-ni I, and V-ni II. The Fl. picc. and Cl. parts start with a *ppp* dynamic. The piano part features a *cresc. poco* marking followed by a *p dim.* marking. The V-ni I and V-ni II parts also have a *p dim.* marking. A large watermark 'NBER' is overlaid on the piano part, with the text 'this music is copyright protected' written diagonally across it.

Fl. picc.

Cl.

Fg.

Cor.

Tr-ba

Tr-ne

Detailed description: This section of the score covers woodwinds and brass. The Piccolo Flute (Fl. picc.) and Clarinet (Cl.) parts feature melodic lines with dynamic markings of *p* and *f*. The Bassoon (Fg.) part has a similar melodic line. The Cor Anglais (Cor.), Trumpet (Tr-ba), and Trombone (Tr-ne) parts are mostly silent in this section, with some notes appearing later in the measure.

Tamburo

Pf.

tre corde

Detailed description: This section covers the Tamburo and Piano. The Tamburo part shows a rhythmic pattern with dynamic markings *5pp*, *fp*, and *fp*, and a *molto* marking. The Piano (Pf.) part features chords with dynamic markings *sff secco*, *sff sim.*, and *sff*. The instruction *tre corde* is written below the piano part.

V-no solo

V-ni I+II

unis. arco

senza sord. f

Detailed description: This section covers the Violin Solo and Violins I & II. The Violin Solo (V-no solo) part has a melodic line with dynamic markings *f* and *p*. The Violins I & II (V-ni I+II) part is silent until the end of the section, where it plays a chord with the instruction *unis. arco* and dynamic marking *senza sord. f*.

8.

cl. *Tempo I* (b) *dolcissimo ppp* *poco* *PPP* *sim.*

Cor.

Pf. *sfff* *sfff* *sfff* *sfff* *sfff* *PPP* *PPP dolce una corda* *non ped.*

Ped.

I V-ni *Tempo I* *Div.* *con sord.* *ppp sempre*

II V-ni *con sord* *ppp sempre*

cl. *Poco a poco rit. al* (b) (b) (b) (b) *PPP* *P* *PPP* *possible* *molto espr.*

Cor.

Pf.

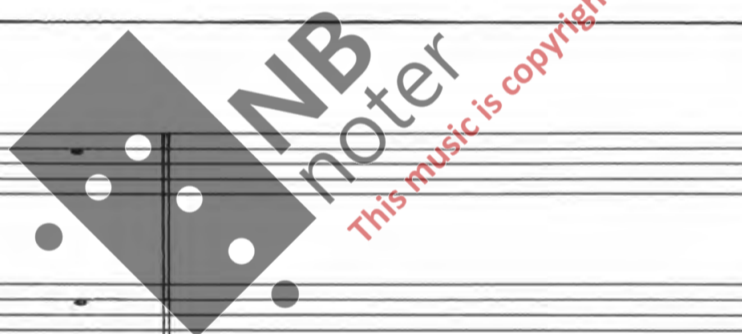
I V-ni *Poco a poco rit. al*

II V-ni

♩ = ca. 46

l. picc.
I.
II.
III.
IV.
V.
VI.
VII.
VIII.
IX.
X.
XI.
XII.

pp
mf
p
pppp
sord.
pp
(sord.)
sord. pp
pp
cresc.
pp
tre corde
8bassa sempre ---
Ped.



picc.
I.
II.
III.
IV.
V.
VI.
VII.
VIII.
IX.
X.
XI.
XII.

mf
p
mf
p
(pp)
(pp)
mf
pp
mf
pp
Doppio movimento (♩)
solo m.s.
mp
Ped. Ped. Ped.
f dim. PPP sim.

10.

Disse toner skal fremheves

Pf. *8bassa* *wharl.* *PPP* *f* *longa* *mp* *p* *pp* *PPP*

Ped.

Pf. *ppp dolce sempre* *m.s. { una corda* *PPP sempre*

Ped.

$\text{♩} = 46$

Fl. picc. *pp* *mf* *p*

Cl. *mf* *p*

Fg. *pp sempre*

Cor. *(sord.) pp sempre*

Tr-ba *(sord.) pp*

Tr-ne *(sord.) pp*

Pf. *tre corde* *pp*

Ped.

Doppio movimento (♩=46)

Fl. picc.

Cl.

Fg.

Cor.

Tr-ba

Tr-ne

Piatti

Pf.

8bassa

Ped.

p, *mf*, *p*, *(pp)*, *pp*, *mf*, *pp*, *mf*, *pp*, *f*, *dim.*

Doppio movimento (♩=46)

V-ni I div.

V-ni II div.

sord., *appr. mf*, *sul pont.*, *sord.*, *ppp*, *sul pont.*, *sord.*, *ppp*, *sord.*, *fppp*, *Sul pont.*

12.

Fl. piccolo

Cl.

Fg.

Cor.

Tr-ba

Tr-ne

Piatti

V-no solo

V-ni I

V-ni II

Edges brushed against each other.

ppp

f

pp

cresc. f

p

pp

mf

f

pp

mf

p

pp

mf

f

pp

mf

pp

p

pp

mf

f

pp

mf

pp

p

pp

$\text{♩} = 116$

Fl. picc. *trun*

Cl. *P sub.* *trun*

Fg. *P*

Cor. *senza sord.*

Pf. *P sub.* *non ped.*

Rit. - - - -

$\text{♩} = 116$

I unis.

V-ni unis.

II unis.

arco

sul pont. b.

arco

pp

Rit. - - - -

molto *trun* *a tempo*

Fl. picc. *pp* *non cresc.*

Cl. *pp*

Fg. *pp*

Cor. *pp*

Tr-ba

Tr-ne

Triangolo *pp*

Pf. *pp* *una corda* *non ped.*

molto *a tempo (♩ = 116)*

1b.

Fl. picc.

Cl.

Fg.

Cor.

Tr-ba

Tr-ne

Triangolo

Tam-tam

Pf.

V-ni solo

V-ni I

V-ni II

senza sord

senza sord

loco

non cresc.

sf p e cresc. molto

tre corde

sp

sp

sp

This music is copyright protected

Fl. picc. *fff* *5* *pp*

cl. *fff* *pp*

Fg. *fff* *pp*

Cor. *fff*

Tr-ba *fff*

Tr-ne *fff*

Tam-tam *ff*

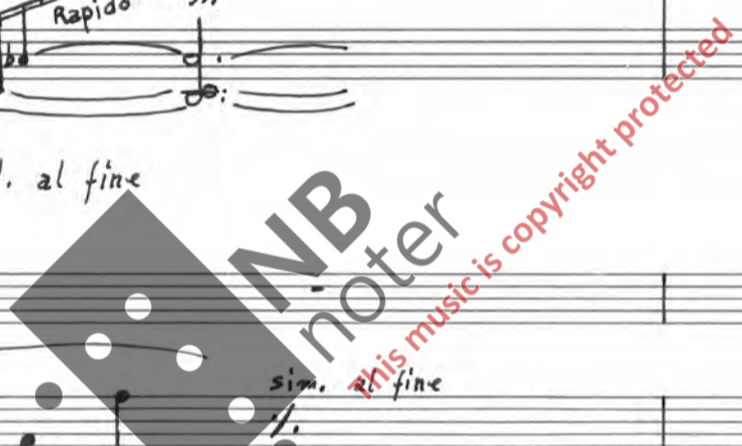
Pf. *sff* *Rapido* *sfff*

Ped. al fine

V-no solo *sord.* *espr. ff molto vibrato*

V-ni I div. a 4 *sord.* *PPP sempre* *sim. al fine*

V-ni II div. a 4 *sord.* *PPP sempre* *sim. al fine*



18.

Pf.

V-no solo

V-ni I

V-ni II

* skal etterhvert forsvinne i den øvrige strykerklang.

Tromsø, 1. okt. 1966