

Yngve Slettholm

# Landscapes in Transformation

for piano





YNGVE SLETTTHOLM:

*LANDSCAPES*  
*IN*  
*TRANSFORMATION*



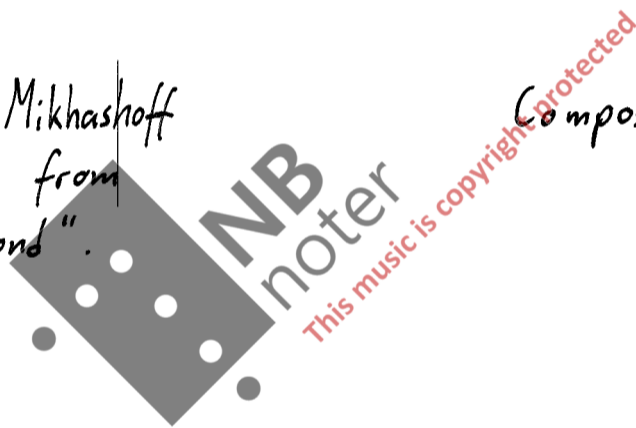
for piano

Being rather different in nature, these four pieces must not necessarily be played together.

They may also be performed as separate compositions (entitled "Landscape 1", "Landscape 2" etc.) or two or three together - or spread out over a whole concert program.

Commissioned by Yvar Mikhashoff  
with financial support from  
"Det norske komponistfond".

Composed 1988 - 89



Total duration approx. 18 minutes

NORSK TITTEL: LANDSKAP 1 FORVANDLING

I

♩ = 58

pp mp pp

ff ppp mf f

(8) *accell.*

ff con poco ped.

*a tempo*

ff a tempo

Handwritten musical notation on a grand staff. The right hand (treble clef) contains a melodic line with notes and rests. The left hand (bass clef) contains a bass line with notes and rests. Dynamic markings include *pp* and *ppp*. A handwritten note *l.v.* is present above the right hand. A *gbs* marking is written below the left hand.

Handwritten musical notation on a grand staff. The right hand features a melodic line with a trill-like passage. The left hand has a bass line with notes and rests. Dynamic markings include *ppp*. A handwritten note *l.v.* is present above the right hand.

Handwritten musical notation on a grand staff. The right hand contains a melodic line with trills and slurs. The left hand has a bass line with notes and rests. Dynamic markings include *ppp* and *mf*. A large watermark "NB noter" and "this music is copyright protected" is overlaid on the page.

Handwritten musical notation on a grand staff. The right hand features a melodic line with trills and slurs. The left hand has a bass line with notes and rests. Dynamic markings include *ppp*, *mp*, and *mf*. A handwritten note *l.v.* is present above the right hand.

Handwritten musical score for a piano piece. The score is written on a grand staff with treble and bass clefs. The key signature has two sharps (F# and C#). The piece begins with a piano (*ppp*) dynamic. The right hand features a triplet of eighth notes, followed by a quarter note, a dotted quarter note, and a half note. The left hand starts with a quarter note, followed by a dotted quarter note and a half note. A fermata is placed over the final half note in both hands. Above the staff, there is a handwritten '8' and a wavy line indicating a tremolo. Below the staff, there is a handwritten '*pppp*' and 'gbs' with a dashed line. The piece ends with a double bar line and a time signature of 3'10''.



♩ = 69

II

Handwritten musical score for the first system. The treble clef staff contains a series of chords and melodic lines with various accidentals (sharps, flats, naturals) and articulation marks (accents, slurs). The bass clef staff features a bass line with triplets and dynamic markings such as *p* and *ff*. The system concludes with a fermata over the final notes.

Handwritten musical score for the second system. The treble clef staff shows a sequence of chords and melodic fragments. The bass clef staff has a bass line with dynamic markings including *p* and *ff*. The system ends with a fermata.

Handwritten musical score for the third system. The treble clef staff features chords and melodic lines with dynamic markings such as *ppp*, *mp*, and *p*. The bass clef staff includes a bass line with dynamic markings like *ppp* and *mp*. The system concludes with a fermata.

Handwritten musical score for the fourth system. The treble clef staff contains chords and melodic lines with dynamic markings including *ppp*, *ff*, *pp*, *mp*, and *p*. The bass clef staff has a bass line with dynamic markings like *ppp* and *mp*. The system ends with a fermata.



Handwritten musical score for the first system. The top staff is in treble clef with a key signature of one flat and a 2/4 time signature. The bottom staff is in bass clef with a 4/4 time signature. Dynamics include *mp*, *pp*, and *ppp*. There are various musical notations such as slurs, ties, and triplets.

Two empty musical staves.

Handwritten musical score for the second system. The top staff is in treble clef with a key signature of one flat and a 3/4 time signature. The bottom staff is in bass clef with a 4/4 time signature. Dynamics include *pp*. There are various musical notations such as slurs and ties.

Two empty musical staves.

Handwritten musical score for the third system. The top staff is in treble clef with a key signature of one flat and a 3/4 time signature. The bottom staff is in bass clef with a 4/4 time signature. Dynamics include *mf*, *ppp*, *f*, and *pp*. There are various musical notations such as slurs and ties.

Two empty musical staves.

Handwritten musical score for the fourth system. The top staff is in treble clef with a key signature of one flat and a 6/4 time signature. The bottom staff is in bass clef with a 4/4 time signature. Dynamics include *ff* and *fff*. There are various musical notations such as slurs and ties.

Two empty musical staves.

Handwritten musical notation for the first system. The system consists of two staves. The upper staff is in treble clef and the lower staff is in bass clef. The key signature is one sharp (F#). The time signature is 3/4. The notation includes various note values, rests, and dynamic markings such as *pp*. A triplet of eighth notes is marked with a '3' above it. There are also some handwritten annotations like '7' and '3/4'.

Handwritten musical notation for the second system. The system consists of two staves. The upper staff is in treble clef and the lower staff is in bass clef. The key signature is one sharp (F#). The notation includes various note values, rests, and dynamic markings such as *mf* and *pp*. A quintuplet of eighth notes is marked with a '5' above it. There are also some handwritten annotations like '4' and '8'.

Handwritten musical notation for the third system. The system consists of two staves. The upper staff is in treble clef and the lower staff is in bass clef. The key signature is one sharp (F#). The notation includes various note values, rests, and dynamic markings such as *f* and *mf*. There are also some handwritten annotations like 'f' and 'mf'.

Handwritten musical notation for the fourth system. The system consists of two staves. The upper staff is in treble clef and the lower staff is in bass clef. The key signature is one sharp (F#). The notation includes various note values, rests, and dynamic markings such as *pp* and *ppp*. There are also some handwritten annotations like '3' and 'ba. ba'.

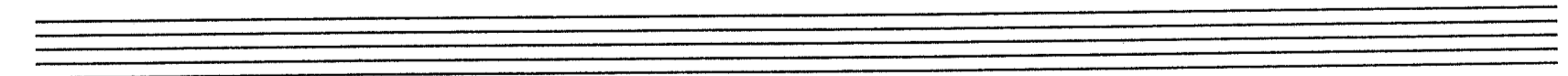
Handwritten musical notation for the first system, featuring a treble and bass clef with various notes, rests, and fingerings (3, 5, 3, 6).



Handwritten musical notation for the second system, including a treble clef and a bass clef with notes, rests, and a watermark "NB noter".



Handwritten musical notation for the third system, featuring a bass clef and notes with dynamics markings like "mf" and "pp".



Handwritten musical notation for the fourth system, including a treble clef and a bass clef with notes, rests, and dynamics markings like "ppp" and "mf".

Handwritten musical notation for the first system, featuring a grand staff with treble and bass clefs. The music includes various notes, rests, and dynamic markings such as *p*, *pp*, *mf*, and *p*. There are also some handwritten annotations like "4" and "5".

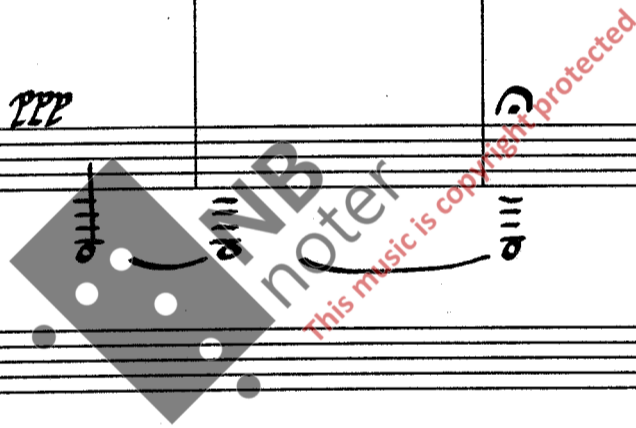
Handwritten musical notation for the second system, continuing the piece. It shows complex rhythmic patterns and dynamic markings like *f*, *p*, and *p*. A large watermark "NB noter" is visible over the middle of the page.

Handwritten musical notation for the third system, featuring intricate fingerings and dynamic markings like *pp*, *f*, and *ff*. The notation includes many slurs and accents.

Handwritten musical notation for the fourth system, the final system on the page. It includes dynamic markings like *mf*, *ff*, *mp*, *ff*, *p*, *f*, and *ff*, along with various musical notations.

Handwritten musical notation for the first system, featuring bass clefs. The notation includes slurs, triplets, and dynamics such as *pp*, *f*, and *pp*. There are also some handwritten notes like "8bs" and "8bs" with arrows pointing to specific notes.

Handwritten musical notation for the second system, featuring treble and bass clefs. The notation includes chords, slurs, and dynamics such as *ppp* and *ppp*. There are also some handwritten notes like "6'10''" and "p".



III

$\text{♩} = 66$

*mf*  
*f* *ff* *pp* *mf* *ff* *pp*

*tr* *l.v.*

\*) Keep these notes activated until the end of the piece by holding the middle pedal down.

*ff* *ppp* *ppp* *p*

*tr* *pp* *ppp* *pp* *mf* *ppp*

*ff* *mf*

Handwritten musical notation for the first system, featuring a treble and bass clef with various notes, rests, and fingerings (3, 5).

Handwritten musical notation for the second system, including a treble clef with notes and rests, and a bass clef with notes and rests. Includes a 'pp' dynamic marking.

Handwritten musical notation for the third system, featuring a treble clef with notes and rests, and a bass clef with notes and rests. Includes a 'legato' marking.

Handwritten musical notation for the fourth system, featuring a treble clef with notes and rests, and a bass clef with notes and rests. Includes a 'Loco' marking.

Handwritten musical score system 1. The system consists of two staves. The upper staff contains a melodic line with various accidentals and a trill-like ornament. The lower staff contains a bass line with chords and some rhythmic markings. A large '8' is written above the first measure of the upper staff. The system concludes with a double bar line and a final chord.

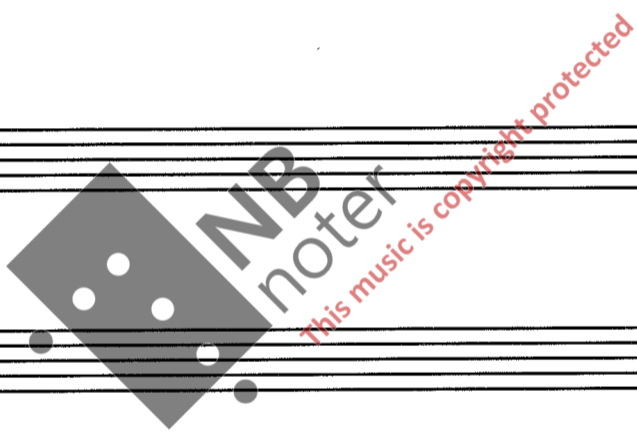
Handwritten musical score system 2. The system consists of two staves. The upper staff features a melodic line with a trill and dynamic markings including 'mf' and 'ff'. The lower staff contains a bass line with complex rhythmic patterns and chords. A large '8' is written above the first measure of the upper staff. The system concludes with a double bar line and a final chord.

Handwritten musical score system 3. The system consists of two staves. The upper staff contains a melodic line with many accidentals and a trill. The lower staff contains a bass line with chords and rhythmic markings. A large '8' is written above the first measure of the upper staff. The system concludes with a double bar line and a final chord.

Handwritten musical score system 4. The system consists of two staves. The upper staff contains a melodic line with a trill and a final chord. The lower staff contains a bass line with chords and rhythmic markings. A large '8' is written above the first measure of the upper staff. The system concludes with a double bar line and a final chord.



Handwritten musical score for piano. The score is written on a grand staff (treble and bass clefs). It includes dynamic markings: *pp*, *ppp*, *f*, and *ppp*. There are also performance instructions: *tr* (trill) at the beginning, *3* (triplets) in the first and second measures, and *\*) Release middle pedal.* at the end. The time signature is 2'30".



IV

$\text{♩} = 60$

5  
4 PPP

5

4

4

5

5

3

7

8

4

4

5

3

3

x) Hold until next note

13

16

4

4

5

3

4

3

4

4

4

7

8

4

4

5

4

5

4

ped. al x)

Handwritten musical notation for the first system, consisting of a grand staff with treble and bass clefs. The music includes various notes, rests, and accidentals. The bass clef part features a 4/4 time signature and a 9/8 time signature. There are also some 5/4 time signatures. The notation includes slurs, ties, and dynamic markings.

Handwritten musical notation for the second system, consisting of a grand staff. The music includes various notes, rests, and accidentals. The bass clef part features a 2/4 time signature and a 4/4 time signature. There are also some 5/4 time signatures. The notation includes slurs, ties, and dynamic markings.

\*)  
(Release  
pedal)

Handwritten musical notation for the third system, consisting of a grand staff. The music includes various notes, rests, and accidentals. The bass clef part features a 5/4 time signature and a 7/8 time signature. There are also some 8bs markings. The notation includes slurs, ties, and dynamic markings.

Handwritten musical notation for the fourth system, consisting of a grand staff. The music includes various notes, rests, and accidentals. The bass clef part features a 3/4 time signature and a 4/4 time signature. There are also some 13/16 and 5/4 time signatures. The notation includes slurs, ties, and dynamic markings.

Handwritten musical notation for the first system. It consists of a treble clef staff and a bass clef staff. The treble staff contains several chords and melodic lines with dynamic markings such as  $ppp$  and  $fff$ . The bass staff contains bass notes and chords, with a  $ppp$  marking. Fingerings are indicated by numbers 1-5. A large watermark 'NB noter' is visible across the page.

Handwritten musical notation for the second system. It continues the piece with treble and bass clefs. The treble staff features chords and melodic lines with dynamic markings like  $ppp$ . The bass staff contains bass notes and chords. Fingerings are indicated by numbers 1-5. A large watermark 'NB noter' is visible across the page.

Handwritten musical notation for the third system. It features a treble clef staff with a melodic line and a bass clef staff with chords. The treble staff has dynamic markings like  $ppp$ . The bass staff contains bass notes and chords. Fingerings are indicated by numbers 1-5. A large watermark 'NB noter' is visible across the page.

Handwritten musical notation for the fourth system. It starts with a treble clef staff and a bass clef staff. The treble staff contains a melodic line with dynamic markings like  $ppp$ . The bass staff contains bass notes and chords. Fingerings are indicated by numbers 1-5. A large watermark 'NB noter' is visible across the page.

Handwritten musical notation for the first system. The treble clef staff contains notes with accidentals (sharps and naturals) and slurs. The grand staff below shows fingerings (13, 16, 5, 8, 4, 4, 7, 8) and a 'ped. al fine' instruction with an arrow pointing to the first measure.

Handwritten musical notation for the second system. The treble clef staff continues the melodic line. The grand staff includes fingerings (2, 4, 13, 16, 5, 8, 4, 4) and a watermark 'NB noter' with the text 'this music is copyright protected'.

Handwritten musical notation for the third system. The treble clef staff continues the melodic line. The grand staff includes fingerings (7, 8, 2, 4, 13, 16, 5, 8, 4, 4) and the 'NB noter' watermark.

Handwritten musical notation for the fourth system. The treble clef staff continues the melodic line. The grand staff includes fingerings (7, 8, 2, 4, 13, 16, 5, 8) and the 'NB noter' watermark. The system concludes with a double bar line and a fermata over the final note.

5'50"