

SKJELBRED 2010  
3 PATHS  
HIDDEN DESTINATION  
3 PATHS HIDDEN DESTINATION  
BJØRN BOLSTAD SKJELBRED  
SKJELBRED  
notef  
This music is copyright protected  
HIDDEN DESTINATION  
3  
DESTINATION  
3 PATHS

BJØRNBOLSTADSKJELBRED-2010

## Instruments :

- Violin
- Oboe
- 2 Trumpets in Bb
- Guitar (acoustic or electric)
- Piano
- Bass (acoustic or electric, bowed or plucked)

**Note :** This is only a suggestion of instrumentation. Feel free to double the groups of instruments, (for example 2 violins, 2 guitars or 4 trumpets), change the oboe with a clarinet, or change the trumpets with French Horns. Anything is allowed if the musical layers of the piece is contained. Don't change the notes in octaves, but you may transpose all instruments in parallel steps and direction.

## Nomenclatura :

Sul Pont. - *sul ponticello*, play with the bow *ON* the bridge

Z - tremolo, as fast as possible

Untied slur - let sound

Pedal (piano) - keep the pedal down until next pedalsign

Durata : approx. 7-8 minutes

# - Three Paths, Hidden Destination -

Score in C

Bjørn Bolstad Skjelbred - 2009

♩ = 90

*espress.*

Violin

*mp*

*cantabile*

Oboe

*mp*

*cantabile*

Trumpet in B♭ 1

*mp*

*cantabile*

Trumpet in B♭ 2

*mp*

①

Vln.

Ob.

B♭ Tpt. 1

B♭ Tpt. 2

2

2

Vln.

Ob.

B♭ Tpt. 1

B♭ Tpt. 2

Gtr.

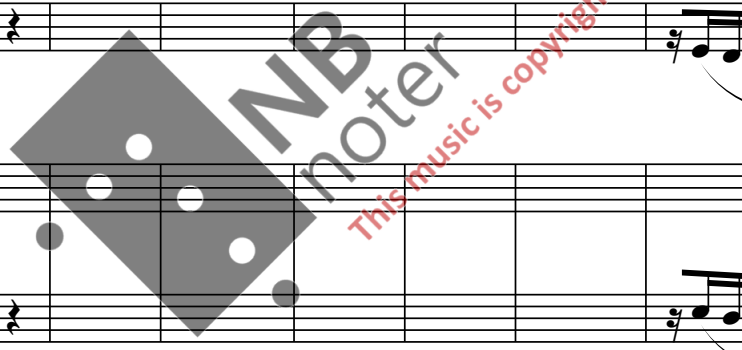
*mf*

Pno.

*mf*

Bs.

*mf*



Musical score for 'Three Paths, Hidden Destination' featuring the following instruments:

- Vln. (Violin): Measures 28-33, with a circled '3' above measure 33.
- Ob. (Oboe): Measures 28-33.
- B♭ Tpt. 1 (Trumpet 1): Measures 28-33.
- B♭ Tpt. 2 (Trumpet 2): Measures 28-33.
- Gtr. (Guitar): Measures 28-33.
- Pno. (Piano): Measures 28-33, with a 'Sub' marking below the staff.
- Bs. (Bass): Measures 28-33.

The score includes a watermark: NB notes. This music is copyright protected.

The image shows a page of a musical score for the piece "Three Paths, Hidden Destination". The page is numbered "4" in the top left corner. The score is arranged in a system with seven staves, each labeled with an instrument: Vln. (Violin), Ob. (Oboe), B♭ Tpt. 1 (B-flat Trumpet 1), B♭ Tpt. 2 (B-flat Trumpet 2), Gtr. (Guitar), Pno. (Piano), and Bs. (Bass). The music begins at measure 39. The Violin part features a melodic line with a slur over measures 39-40 and another slur over measures 41-44, which includes a circled "4" above a sharp sign. The Oboe part follows a similar melodic contour. The Trumpets play a rhythmic accompaniment of quarter notes. The Guitar, Piano, and Bass parts play a consistent eighth-note accompaniment starting at measure 44, marked with a mezzo-forte (*mf*) dynamic. The Piano part includes a sub-octave indication "(8vb)" with a dashed line. A large, semi-transparent watermark for "NB noter" is overlaid on the center of the page, with the text "This music is copyright protected" written in red below it.

45 53 (5)

Vln.

Ob.

B♭ Tpt. 1

B♭ Tpt. 2

Gtr.

Pno.

(Sub) -----

8<sup>vb</sup>-----

Bs.

NB noter

This music is copyright protected

54

Vln.

54

Ob.

54

B♭ Tpt. 1

B♭ Tpt. 2

54

Gtr.

54

Pno.

(8vb)

54

Bs.

NB noter

This music is copyright protected





71 <sup>7</sup> 73

Vln.

Ob.

B♭ Tpt. 1

B♭ Tpt. 2

Gtr.

Pno.

Bs.

*mf*

*f*

*f*

*mf*

Secco

This music is copyright protected

NB Proter

78

Vln. *mf* *mf* *agitato*

Ob. *mf* *mf*

Bb Tpt. 1 Cup Mute *p* *mf*

Bb Tpt. 2 Cup Mute *p* *mf*

Gtr. *mf*

Pno. *mf*

Bs. *8<sup>b</sup>*

82

*This music is copyright protected*

85

Vln. 9  
91 → sul pont.

85

Ob.

85

Bb Tpt. 1

Bb Tpt. 2

85

Gtr.

85

Pno.

(8vb)-----

8vb-----

85

Bs. *mf*

This music is copyright protected

ND  
notel

94 ord.

Vln.

Ob.

Bb Tpt. 1

Bb Tpt. 2

Gtr.

Pno.

(8<sup>vb</sup>)

Bs.

NBnotes

This music is copyright protected

102

Vln.

102

Ob.

102

B $\flat$  Tpt. 1

102

B $\flat$  Tpt. 2

102

Gtr.

102

Pno.

102

Bs.

Straight Mute

Straight Mute

Sub

Watermark: NBMusic.com - This music is copyright protected

Detailed description: This is a page of a musical score for the piece "Three Paths, Hidden Destination". The page is numbered 12 at the top left. It contains seven staves of music. The first staff is for Violin (Vln.), starting at measure 102 with a complex, rhythmic melody. The second staff is for Oboe (Ob.), with a few notes and rests. The third and fourth staves are for two B-flat Trumpets (B $\flat$  Tpt. 1 and B $\flat$  Tpt. 2), both of which are marked "Straight Mute" and play simple, sustained notes. The fifth staff is for Guitar (Gtr.), with a rhythmic pattern. The sixth staff is for Piano (Pno.), with a complex, rhythmic accompaniment in both treble and bass clefs. The seventh staff is for Bass (Bs.), with a rhythmic pattern similar to the guitar. A watermark "NBMusic.com - This music is copyright protected" is overlaid diagonally across the center of the page. The score includes various musical notations such as notes, rests, beams, and dynamic markings.

109 sul pont.

109 115

Vln. *ff* *mf*

Ob. *mf* *mf*

B $\flat$  Tpt. 1

B $\flat$  Tpt. 2

Gtr. *sim.*

Pno. *f*

(8 $\flat$ )

Bs.

117

Vln.

Ob.

B $\flat$  Tpt. 1

B $\flat$  Tpt. 2

Gtr.

Pno.

Bs.

*f*

*mf*

*mp*

This page contains the musical score for measures 117 through 124. The instruments are Violin (Vln.), Oboe (Ob.), B-flat Trumpet 1 (B $\flat$  Tpt. 1), B-flat Trumpet 2 (B $\flat$  Tpt. 2), Guitar (Gtr.), Piano (Pno.), and Bass (Bs.). The score is written in a single system with seven staves. The key signature has one sharp (F#) and the time signature is 4/4. The music is characterized by intricate rhythmic patterns, including sixteenth and thirty-second notes, and rests. Dynamic markings include *f* (forte) at the beginning of the Bass staff, *mf* (mezzo-forte) in the Guitar staff, and *mp* (mezzo-piano) in the Piano and Bass staves. A large watermark 'MPnotes.com' is overlaid diagonally across the center of the page.





12  
133

Vln. *f*

Ob. *mf*

Bb Tpt. 1 *f*

Bb Tpt. 2 *f*

Gtr. *f*

Pno. *f*

Bs. *f*

137

Vln.

137

Ob.

137

B♭ Tpt. 1

B♭ Tpt. 2

137

Gtr.

137

Pno.

137

Bs.

*p* *cresc.*

*p* *cresc.*

*Red.*

sul pont.

13

144

ord.

Vln.

141 **ff** **mp**

Ob.

141 **ff** **mp**

B $\flat$  Tpt. 1

141 **pp** *cresc.* **f**

B $\flat$  Tpt. 2

**pp** *cresc.* **f**

Gtr.

141 **p** *cresc.* **ff**

Pno.

141 **ff** *subito p* **ppp** **p** *cresc.* **ff** **p**

Bs.

141 **f** **p** **ppp** **p** *cresc.* **f** **p**

148 ord.

Vln. *pp* poco á poco cresc. *f* *mp*

Ob. *pp* poco á poco cresc. *f* *mp*

B $\flat$  Tpt. 1 *pp* poco á poco cresc. *f* *mp*

B $\flat$  Tpt. 2 *pp* poco á poco cresc. *f* *mp*

Gtr. *pp* poco á poco cresc. *f* *p*

Pno. *pp* poco á poco cresc. *f* *p*

Bs. *pp* poco á poco cresc. *f* *p*

The image shows a page of a musical score for a symphony. It features seven staves: Violin (Vln.), Oboe (Ob.), two parts of the Bass Trombone (B $\flat$  Tpt. 1 and B $\flat$  Tpt. 2), Guitar (Gtr.), Piano (Pno.), and Bass (Bs.). The score begins at measure 148. The Violin and Oboe parts have a dynamic marking of *pp* and a *poco á poco cresc.* instruction. The Trombone parts also start at *pp* and follow the same crescendo. The Guitar and Piano parts play a rhythmic accompaniment of chords, starting at *pp* and reaching *f* by measure 154, then tapering to *p* by measure 158. The Bass part follows a similar dynamic path. The score concludes with a *mp* dynamic marking for the strings and a *p* marking for the guitar and piano. A large watermark 'MPNoter' is overlaid on the score, with the text 'This music is copyright protected' written diagonally across it.

Vln. *pp* poco á poco cresc.

Ob. *pp* poco á poco cresc.

Bb Tpt. 1 *pp* poco á poco cresc.

Bb Tpt. 2 *pp* poco á poco cresc.

Gtr. *pp* poco á poco cresc.

Pno. *pp* poco á poco cresc.

Bs. *pp* poco á poco cresc.

160

Vln. *fff* *mp cantabile* *espress.* 165

Ob. *fff* *mp*

B♭ Tpt. 1 *fff* *cantabile*

B♭ Tpt. 2 *fff* *p cantabile*

Gtr. *fff* *mf*

Pno. *fff* *mf* *Sva* *Sva*

Sub-----

Bs. *fff* *p*

169

Vln.

169

Ob.

169

B♭ Tpt. 1

B♭ Tpt. 2

169

Gtr.

169

Pno.

169

Bs.

*Sra*

*Srb*

3

3

*Sra*

*Sra*

This music is copyright protected



178

Vln.

178

Ob.

178

Bb Tpt. 1

Bb Tpt. 2

178

Gtr.

178

Pno.

178

Bs.

*8va* - - - - - 1

*8va* - - - - - 1

**NB noter**

*This music is copyright protected*