

# *Pastorale e Rondo*

for  
*Fløyte, Fiolin & Cello*

op. 70

Filip Sande

Til Trio-0

# Pastorale e Rondo

op. 70

Til Trio-0

Filip Sande

Moderato poetico ♩ = 88

*dolce e tranquillo*

Flauto

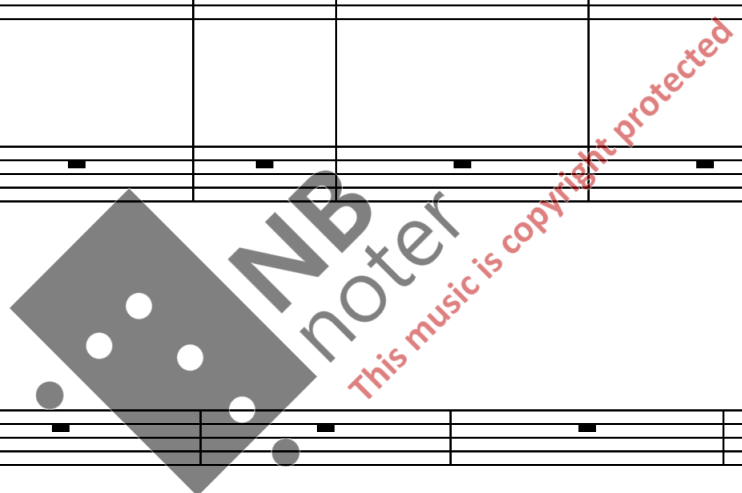
Musical notation for Flute part, measures 1-9. It features a melodic line with triplets and dynamics markings.

Violino

Musical notation for Violin part, measures 1-9. The staff is mostly empty with some rests.

Violoncello

Musical notation for Cello part, measures 1-9. The staff is mostly empty with some rests.



10

Fl.

Musical notation for Flute part, measures 10-18. It features a melodic line with rests.

Vln.

Musical notation for Violin part, measures 10-18. It features a melodic line with triplets and dynamics markings.

Vlc.

Musical notation for Cello part, measures 10-18. The staff is mostly empty with some rests.

18

Fl.

Vln.

Vcl.

*liberamente*

*mf* *f* *p* *mf* *p*

32

Fl.

Vln.

Vcl.

*mp* *f* *p* *mp*

*pp* *mf* *f* *ff* *ff*

40

Fl.

Vln.

Vcl.

*mf* *f* *ff* *ff*

*pizz.* *pizz.*

Pastorale e Rondo

48

Fl. *f* 3

Vln. *mf* 3

Vlc. *mf* 3 *f* II arco 3

59

Fl. *spp* *ff* *mf* *liberamente* 3 3 3 *f*

Vln. *f* pizz. 3

Vlc. IV *f* pizz. 3

Allegretto giocoso

73

Fl. *pp* 3 3 *mf*

Vln. *f* arco 3

Vlc. *f* pizz. *f* arco *f*

90

Fl.

Vln. *p* 6 6 6 3

Vlc. *p* 3 6 6 6 *ff*

This musical score page contains measures 107 through 156, divided into three systems. The instruments are Flute (Fl.), Violin (Vln.), and Viola (Vlc.).

- System 1 (Measures 107-122):** Flute enters with a triplet of eighth notes. Dynamics range from *pp* to *ff*. The section is marked *risoluto e marcato*. Violin and Viola play accompaniment with various textures, including triplets and pizzicato.
- System 2 (Measures 123-139):** Flute continues with triplets. Dynamics include *p*, *ff*, and *pizz.*. The section remains *risoluto e marcato*. Violin and Viola accompaniment features *ppp* and *sffz* markings.
- System 3 (Measures 140-156):** Flute plays a melodic line with triplets. Dynamics range from *pp dolce* to *fff*. The section is marked *pp dolce*. Violin and Viola accompaniment includes *p*, *f*, and *spp* markings.

Rehearsal marks D, E, and F are present above the Flute staff. A large watermark 'NB noter' and 'This music is copyright protected' is overlaid on the score.

Pastorale e Rondo

6

This musical score page contains measures 178 through 231, divided into four systems. The instruments are Flute (Fl.), Violin (Vln.), and Violoncello (Vlc.).

- System 1 (Measures 178-196):** Flute part starts with a forte (*f*) dynamic, followed by fortissimo (*ff*), pianissimo (*pp*), fortissimo (*ff*), and mezzo-forte (*mf*). Violin and Cello parts also feature *f*, *ff*, *pp*, and *ffz* dynamics. A box labeled 'G' is present above measure 196.
- System 2 (Measures 197-214):** Flute part includes mezzo-forte (*mf*) and forte (*f*). Violin part includes *mf*, *mp* pizz., and *ff*. Cello part includes *mf*, *p*, and *ff*. An 'arco' instruction is present above measure 214.
- System 3 (Measures 215-230):** Flute part continues with *ff*. Violin part continues with *ff*. Cello part continues with *ff*.
- System 4 (Measures 231-231):** Flute part continues with *ff*. Violin part continues with *ff*. Cello part continues with *ff*.

A large watermark 'IMBiber' is overlaid diagonally across the page, with the text 'full music copyright protected' written below it.

This musical score page contains three systems of music for Flute (Fl.), Violin (Vln.), and Viola (Vlc.).

- System 1 (Measures 247-267):** Features a first ending bracket labeled '1'. Dynamics include *ff*, *p*, and *f*. Fingerings of 3 are indicated for several notes. Section markers III, IV, and III are present.
- System 2 (Measures 268-290):** Dynamics include *ff* and *fffz*. A section marker II is present.
- System 3 (Measures 291-306):** Features a second ending bracket labeled '2'. Dynamics include *mf*, *ff*, *pp*, and *mp*. Fingerings of 3 are indicated. A section marker J is present.
- System 4 (Measures 307-317):** Dynamics include *ff*, *fffz*, and *spp*. The word *marcato* is written above the measures. Fingerings of 3 are indicated.

A large watermark 'Noter' is overlaid diagonally across the page, with the text 'All rights reserved. No music is copyright protected' written in red below it.

Pastorale e Rondo

8

323

K

Fl.

Vln.

Vcl.

331

Fl.

Vln.

Vcl.

L Tempo primo

M Piu animato

Fl.

Vln.

Vcl.



352 **N** Tempo primo

Fl. *ppp* *ff* *pp* *ff*

Vln. *p* *ff* *pp* *ff*

Vcl. *ppp* *ff* *pp* *ff*

**O** Allegretto giocoso

Fl. *mf* *p* *ppp* *ff* animato

Vln. *ppp* *ff* animato

Vcl. *pizz.* *arco* *ppp* *ff* animato

**P** Piu animato

Fl. *spp* *fff*

Vln. *spp* *fff*

Vcl. *spp* *fff*

Pastorale e Rondo

10

384

Fl. *mf* *fff*

Vln. *mf* *fff* *fff*

Vlc. *mf* *fff* *fff*

**Q** Presto agitato

391

Fl. *fff* *3 marcato*

Vln. *3 marcato*

Vlc. *3 marcato*

Durata: 9,30 min.