

SERGE RYPAAL;

OPUS 67

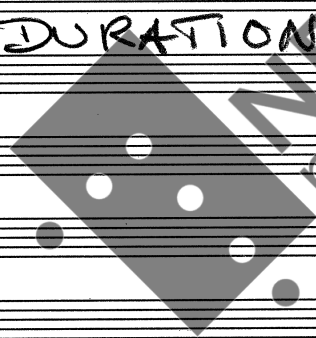
WHAT'S THE BEAUTY OF IT

for
ELECTRIC GUITAR

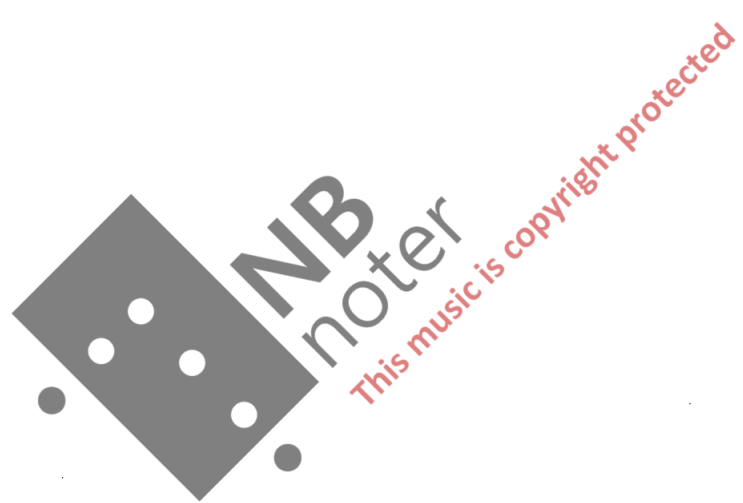
&
ORCHESTRA

[see page 17]

DURATION 18 MINUTES



This music is copyright protected



12

campanelli (glöckenspiel) mf

crotales mf

silver-bells mf

EL. GUIT SOLO

vb mp

Assorted small bells.

25"

13

5"

14

pc mp

fla mp

ob mp

ci mp

cl mp

fg mp

tr. pc

tr

cr 1

cr 2

dbn 1

dbn 2

euph

tb

camp.

crot.

silver bells

EL. GUIT solo

va I

va II

vt

vc

vb

creac - - - - - f

$\frac{F}{3}$

p cresc - - - - - mf

p cresc - - - - - mf

p cresc - - - - - mf

p cresc - - - - - mf

(14)

pe
fla
ob
ci
cl
fg
BRASS
PERC
EL. GUIT

EL. GUIT: Fm^7 Gm^7 E^7 A^{11} Fm^7 C

vn I: *divisi* *non divisi*

vn II: *divisi*

vc: *divisi*

vb

BRASS: (13)

PERC: TACET 3" START (12)

*1) THE SOLOIST MUST LISTEN TO EVERYTHING, REACT, MAKE PAUSES ETC VERY CREATIVELY

cl.b
PERC
EL. GUIT
vb

cl.b: SOLO

PERC: REPEAT (12)

EL. GUIT: QUASI TACET

vb: $\frac{4}{3} > p$

cl.b
PERC
EL. GUIT
vb

cl.b: $\frac{4}{3}$

PERC: (12)

EL. GUIT: A FEW SOUNDS

vb: $\frac{4}{3}$

Celesta
Synth
Fender Piano
EL. GUIT

Celesta: f

Synth: mf

Fender Piano: mp/mf

EL. GUIT: SOLO Cm^7 A^{11} Ebm^7 D^7

Fender Piano: $8va$ (F^{sus}) $(F^{#sus})$ (Ab^{sus}) (A^{sus})
 (Eb^{sus}) (D^{sus}) (Db^{sus}) (C^{sus})

*2) Registration; beautiful strings. *3) Only at reprise

THAT'S THE BEAUTY OF IT

Celesta

Synth

Fender

EL. GUITAR

(Bb sus)

(# sus)

(G# sus)

(Bb sus)

(A sus)

(G# sus)

Am sus

A

E

pc

fl.a

ob

c.i

cl

fg

BRASS

EL. GUITAR (FACE)

vb

JUST SOUNDS

18

19

20"

pc

fl.a

ob

c.i

cl

cl.b

fg

cf.g

vb

morendo

morendo

morendo

morendo

morendo

f

f

f

mf

mf

mp

cl.b

cf.g

vb

mp

mf

mp

cl. B♭
 fl. B♭
 vb
 sub ff

WOODWIND I
 [the others]

(19)
 (19)

W.W. I
 PERC
 CHROMATIC

STEREOPHONIC LUSH STRINGS

SYNTH
 (4' = 60)

EL. GUIT
 SOLO

8va basso

4' = 60
 (25)
 (26)

mp
 mp
 esp
 mp
 mp

cr 1,2
 SYNTH
 EL. GUIT
 SOLO

vn I
 vn II
 vl
 vc
 vb

divisi

mf
 esp

(27)
 (28)
 (29)
 (30)
 (31)
 (32)
 (33)
 (34)

KEYBOARDS
 Repeat (17) once with celenta

EL. GUIT
 (17)

40"

W. WIND
 BRASS
 PERC
 ARCHT
 EL. GUIT

(14)
 ff
 (1)
 TACET
 (1)
 TACET
 (1)
 TACET
 (1)

12" ~ (36)
 12" ~ (38)
 25"

38

Handwritten musical score for measures 38-40. The score includes staves for Clarinet in B-flat (cl.b), Violin (vb), and Cello/Double Bass (cl.b/vb). Dynamics include *p*, *cresc*, *mf*, and *f*. A tempo marking of 40" is present.

39

Handwritten musical score for measures 39-41. The score includes staves for Clarinet in B-flat (cl.b), Clarinet in F (cls), Glockenspiel (glock), Conga (cong), Percussion (perc), Electric Guitar (EL. GUIT), and Violin (vb). Dynamics include *mf*, *f*, and *morendo*. A tempo marking of 40" is present.

BELLS ETC. WITH A RINGING SUSTAIN.

25"

Handwritten musical score for measures 40-41. The score includes staves for Clarinet in B-flat (cl.b), Clarinet in F (cls), Glockenspiel (glock), Conga (cong), Percussion (perc), Electric Guitar (EL. GUIT), and Violin (vb). Dynamics include *f*, *mf*, and *glass*. A tempo marking of 25" is present.

40

Handwritten musical score for measures 40-41. The score includes staves for Clarinet in B-flat (cl.b), Clarinet in F (cls), Cello/Double Bass (cel), Synth, Tambourine (Tamb.), Electric Piano (EL. P.), and Electric Guitar (EL. GUIT). Dynamics include *mf*, *mf/k*, and *L.vib*. A tempo marking of 40" is present. The key signature is C major.

THAT'S THE BEAUTY OF IT

ca 24"

[40 continued] 8va

Cel

Synth

Fender EL.P

EL.GUIT

8va

L.vibr

8va

L.vibr

D A 9

E B A 9

ca 30"

(41) Slightly slower than (40)

Cel

Synth (40)

Fender EL.P (40)

EL.GUIT (40)

vn I

vn II

vl

vc

NB noter

This music is copyright protected

ca 20"

(42)

CFG

PERC (39)

EL.GUIT C major

vb

mf > mp

mf

glass

(tacet)

ca 1min

(43)

EL.GUIT SOLO AD LIB WITH SOUNDS ETC

ca 45" (44) ca 25" (45)

glock

comp

bells

EL.GUIT E major

vb

AD LIB

mf

cerc

[11' 25" RA]

NMI 36-linjer

THAT'S THE BEAUTY OF IT

- 8 -
15" ~ 39

18"

SYNTH (38)

EL. GUIT (38) SOLO
Em Am Dm

VN I (38) non divisi, cap
mp

VN II (38) + mp non divisi, cap

VL (38) mp

VC (38) + mp

22" ~ 40 25"

pc mp

fla mp

ob mp

cl mp

clb mp

fs mp

cfg mp

SYNTH (38)

EL. GUIT (38) Am all F

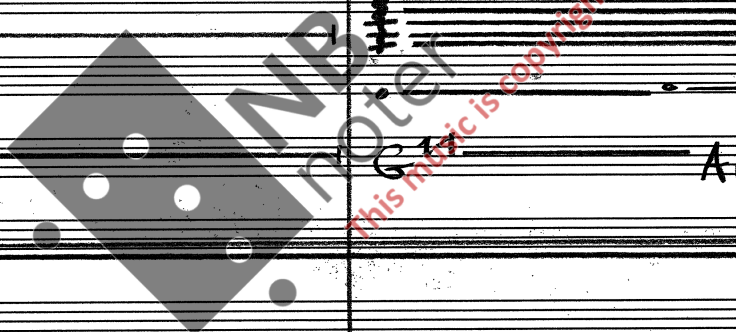
VN I

VN II +

VL

VC

VB mp



THAT'S THE BEAUTY OF IT

(42)

(15")

(5")

(7")

Handwritten musical score for woodwinds and strings. Instruments include Piccolo (pc), Flute (fl), Oboe (ob), Clarinet in C (cl), Clarinet in Bb (clb), Bassoon (fs), and Contrabassoon (cfs). The score features various musical notations such as notes, rests, and dynamic markings like *legato* and *gliss*.

WOODWIND: PLAY SLOWLY; EVERY TONE IS IMPORTANT

Handwritten musical score for percussion instruments. Instruments listed include Timpani (tp), Snare Drum (sn), Cymbals (cr), Tom-toms (tm), and Bass Drum (bd). The score shows rhythmic patterns and dynamic markings such as *f*.

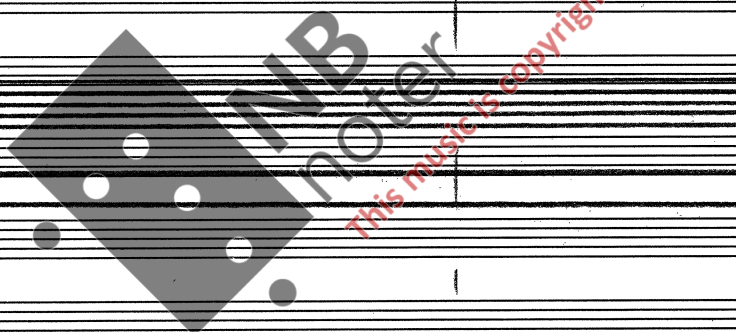
Handwritten musical score for strings and other instruments. Instruments include Cello (Cel), Double Bass (db), Synthesizer (SYNTH), and Electric Bass (E.L.). The score includes notes and rests.

Handwritten musical score for auxiliary instruments. Instruments include Glockenspiel (glock), Crotales (crot), Bells (bells), and Electric Guitar (EL. GUIT). The score includes notes and rests.

Handwritten musical score for Violins and Viola. Instruments include Violin I (vn I), Violin II (vn II), Viola (vl), and Violoncello (vc). The score includes notes and rests.

vi (mp) legato XI INDIVIDUAL TEMPI TO CREATE CHORDS.

FRAGILE AD LIB



pc

fl.a

ob

ci

cl

cl.b

fg

cts

trp

tr

T1

cr

L2

T1

trb

L2

euph

tb

Cel

SYNTH

Fender

EL.P

glock

croff.

bells

EL.GUIT

AD LIB

vnI

vnII

vl

vc

vb

8va

NB

noter

This music is copyright protected

~ (43)

(finish pattern)

TACET

(finish pattern)

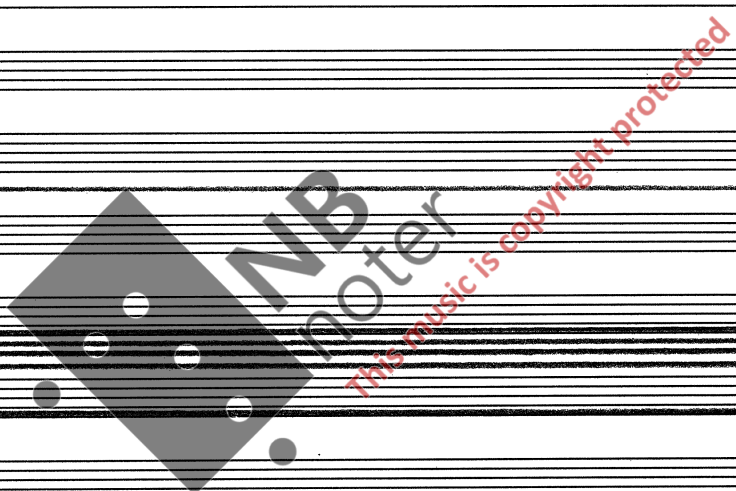
(finish pattern)

TACET

Handwritten musical score for a full orchestra and various instruments. The score includes staves for woodwinds (pc, fl.a, ob, ci, cl, cl.b, fg, fg), brass (trp, trn, F1, cr L2, F1, tbn L2, euph, tb), strings (Ccl, SYNTH, Fender EL.P, vl, vc, vb), and percussion (glock, crost., bells, EL.GUIT). The score features various musical notations such as notes, rests, and dynamic markings like 'mp' and 'legato'. A large watermark 'NB noter' is visible across the center of the page.

x) INDIVIDUAL TEMPI TO CREATE CHORDS.

pc
fl.a
ob
ci
cl (finish pattern) TACET
d.b
fs (finish pattern) TACET
cfs
trp.c
dn
tr1
cr
L2
tr1
tbn
L2
euph
tb
Cel
SWM
Fender
ELP
glock
with EL.PIANO
crot
with EL.PIANO
bells
EL.GAR
vnI
vnII
vl
vc
vb



pc
fl.a
ob
c.i
cl
cl.b

fs
cfs

tr.p.c
tr

cr
L2

hon
L2

euph
tb

Cel

SYNTH

Pend
EL.P

glock
crost.
bells

EL.GUIT

vnI
vnII
vl
vc
vb

ABRUPT STOP

(finish the pattern) TACET

4
4
♩ = 60

ff
ff
ff
ff
ff
ff
ff
ff

com sordin (metal)
com sordin (metal)

Ped. off

EL. GUIT **AD LIB**

VL **B**

VC **B**

VB **B**

mp

INDIVIDUAL TEMPI TO CREATE CHORDS.

25" ~ (46)

euph

db

EL. GUIT **DISAPPEARING**

VL **B**

VC **B**

VB **B**

mp

morendo

15" ~ (47)

G1 **B**

CR **B**

L2 **B**

G1 **B**

tb1 **B**

L2 **B**

euph

tb

EL. GUIT

VN II **B**

VL **B**

VC **B**

mf

mf

con sordin *mf*

con sordin *mf*

mp

morendo

TACET

TACET

G1 **B**

CR **B**

L2 **B**

G1 **B**

tb1 **B**

L2 **B**

euph

tb

VN II **B**

VL **B**

(47)

40" ~ (48)

17"

Cr
L2
Tbn L2
euph
Tb
vn I
vn II TACT
vl

W.W.
fp.pc
fn
BRASS
Cel
SYNTH
Fender EL.P
glock
cym
bells

(42)
mf/f

(47)
mf/f

(42)
mf/f

(38) Repeated slowly
(Em - Am - Dm⁹)
mf/f

(43)
mf/f

AD LIB ("SHINING SILVER") (ad lib volume level)

EL.GUIT VERY SOLISTIC

vn I
vn II
vl
vc
vb

(45/46)
f

(43)
f

(42)
f

[46'35"]

50 45"

W.W. *dim - - - - - p*

fr. pc

fp

BRASS *dim - - - - - p*

Cel *finish pattern*

SYNTH

Fender EL.P *finish pattern*

glock REPEAT ONCE

cmp *crotales*

bells

EL. GUIT

vn I *8va*

vn II *8va*

vl

vc

vb

51 25"

SYNTH (38) *mp* *SUSTAIN Dim*

EL. G

vn I *mf*

vn II *mf*

vl *mf* *TACET*

vc *mf* *TACET*

vb *mf* *TACET*

~ (52) ~ (53) ~ (54)

SYNTH TACET

EL. GUIT C dur TACET

VN I *diminuendo* ----- *pp* *p*

VN II *diminuendo* ----- *pp* *p*

VL *divisi* *p* *divisi*

VC *p*

VB *p*

THE END.

11/10-96

SCORE IN C

DURATION 18 MINUTES

INSTRUMENTS

WOODWIND [w.w.] piccolo flute - pc
 alto flute - fl.a
 oboe - ob
 corneo inglese - c.i
 clarinet (preferable in A) - cl
 bass clarinet - cl.b
 bassoon - fs
 contrabassoon - cb

BRASS piccolo trumpet - pt pc
 trumpet (Bb) - tp
 2 french horns - c.i 1&2
 2 trombones - tbn 1&2
 euphonium (or baritone) - euph
 tuba - tb

KEYBOARDS ; celesta - cel
 Synthesizer - SYNTH
 Fender Electric Piano } 3 players

PERCUSSION Glockenspiel - GLOCK
 Crotales - erot. / Campana - comp } 3 players
 Assorted "silver bells" etc.

SOLOIST: ELECTRIC GUITAR with overdrive pedal, volume pedal, echo, reverb etc.

ARCHI: PREFERABLE A LARGE STRING SECTION

P.A. AMPLIFICATION MAY BE USED.