

TALES OF DREAMS REMEMBERED

MOVEMENT II OF 7TH SYMPHONY
[MAY BE PERFORMED SEPERATELY!]

OPUS 100

- PART I: TALES OF DREAMS REMEMBERED pages 1-9 [duration: 7'50"]
 - PART II: THE FORGOTTEN GRAVEYARD pages 10-15 [duration 4'00"]
 - PART III: EVENTYRSKOGEN pages 16-21
 - PART IV: AND THE EAGLE CRIES pages 22-29 - duration 10'35" [duration 7'25"]
 - PART V: TUSSMØRKE pages 30-37 [duration 7'40"]
- TOTAL DURATION 37'30"

WOODWIND:

ORCHESTRA

- 3 FLUTES incl. piccolo
- 1 ALTOFLUTE / BASSFLUTE [or played by one of the others]
- 2 OBOES
- 1 ENGLISH HORN
- 2 CLARINETS IN A
- 1 CONTRABASSCLARINET / BASS CLARINET
- 3 BASSOONS : 3rd also CONTRABASS-BASSOON

BRASS:

- 4 FLÜGELHORNS including 2 TRUMPETS and BASS-TRUMPET IN C [or separate musician]
- 4 FRENCH HORNS
- 3 TROMBONES
- 1 BASS TROMBONE
- 1 TUBA

HARP
CELESTA

PERCUSSION:

- VIBRAPHONE - CROTALES - CAMPANE [sometimes 2 players]
- TAMTAM - GONGS - GRAN CASSA - CHURCH BELL - BELL TREE
- CYMBALS - WIND BELL - CHIMES - TRIANGLES - SONAGLI

ARCHI:

- TIMPANI [with cymbal]
- 12 VNI - 12 VNII - 8 VL [minimum] - 6 VC [minimum] - 6 VB
- 5 STRINGS



TALES OF DREAMS REMEMBERED - 1 -

11 10" 12 10"

Celesta mp

2 Cymbals mp cresc ----- mp

Cymbal on

tmp glass timpani

vn I c.s. ∅ mp cresc ----- mp dim ----- pp sounding 15va above

vn II c.s. 8va flautando mp cresc ----- mp dim ----- pp

Ped ----- → L.vibr

4 4 1 3 76-80 5

fl 1

fl 2

cl 1

cl 2 in A

vn I

vn II

vl

vc

c.s.

s.s.

cresc -----

10 15

fl 1,2

cl 1,2 in A

vibra-phon

crotales

cmp

vn I

vn II

vl

vc

arco mp

soft mallets

cresc ----- mf

dim ----- p

mf

dim ----- p

- 2 - TALES OF DREAMS REMEMBERED

7-8"

Handwritten musical score for measures 18 and 19. The score includes staves for woodwinds (vln, croc., cmp) and brass (trbns 1-4). Measure 18 is marked with a box containing '18' and a '2a B' annotation. Measure 19 is marked with a box containing '19'. Dynamics include mp and mfr. The woodwinds play melodic lines with various articulations, while the brass parts are mostly rests with some notes in measure 19.

Handwritten musical score for measures 20, 21, and 25. The score includes staves for woodwinds (fl, cl, fg, cr), brass (trbns 1-4, tb), and strings (cmp, bell, tree, tmp, vni, vnii, vl, vc, vb). Measure 20 is marked with a box containing '20' and a '5'' annotation. Measure 21 is marked with a box containing '21' and a '6'' annotation. Measure 25 is marked with a box containing '25'. Dynamics include mf and p. The woodwinds and strings play melodic lines, while the brass parts are mostly rests with some notes in measure 25. A large watermark 'NB noter' is visible across the score.

Handwritten musical score for measures 30-35. Instruments include:

- comp (Comps)
- bell-tree
- tmp (Toms)
- vn I (Violin I)
- vn II (Violin II)
- vl (Viola)
- vc (Violoncello)
- vb (Vibraphone)

Measure 30 includes a *tan-tan* marking and *mf* dynamics. Measure 35 includes a *l.vibr* marking. The score features complex rhythmic patterns and melodic lines across the strings and percussion.

Handwritten musical score for measures 35-40. Instruments include:

- cl (Clarinet)
- vn I (Violin I)
- vn II (Violin II)
- vl (Viola)
- vc (Violoncello)
- vb (Vibraphone)

Measure 35 includes a *mf* marking. Measure 40 includes a *l.vibr* marking. The score features complex rhythmic patterns and melodic lines across the strings and woodwinds.

Handwritten musical score for measures 40-45. Instruments include:

- cl (Clarinet)
- cr 1 (Cornet 1)
- Celesta
- rib-m. (Ribbon Mute)
- Crotales
- comp (Comps)
- vn I (Violin I)
- vn II (Violin II)
- vl (Viola)
- vc (Violoncello)
- vb (Vibraphone)

Measure 40 includes a *mf* marking. Measure 45 includes a *mf* marking. The score features complex rhythmic patterns and melodic lines across the strings, woodwinds, and percussion.

TALES OF DREAMS REMEMBERED

- 4 -

PART OF 7TH SYMPHONY

[142]

f^o H A

[144]

8^o H

[145]

6^o H

Handwritten musical score for various instruments including Flutes (Fl. 1-3), Clarinets (Cl. 1-2), Bassoon (Bassoon), Trumpets (Tr. 1-2), Trombones (Tbn. 1-3), Tuba (Tb), Cymbals (Cmp), Bell-trees (Bell-tree), Tam-tam, Timpani (Timp), Violins (Vn. I, Vn. II), Viola (Vl), Violoncello (Vc), and Double Bass (Vb). The score includes dynamic markings such as *f*, *mf*, *cresc.*, and *non divisi*. There are also performance instructions like "metal sord" and "mf cresc" with a corresponding musical notation for a cymbal roll. A large watermark "NB noter" is visible across the center of the page.

TALES OF DREAMS REMEMBERED

PART OF THE SYMPHONY

← R

~ [147] 2-3" [148] 4" 4/4 ♯ = 68-72 -5- [50] ♯ = 40

fl 1,2
cl 1,2
in A
fg 1,2
vibra-
ph
bell-
tree
cmp
vn I
vn II
vl
vc
vb

G.P.

st.
st.
st.
st.

mf
arco

~ [55] 8" [56] 7" [57] 6" [58] 12"

fl 1,2
cl 3,4
in A
1,2
fg 1,2
tp
basso
vibra-
ph
Crot.
cmp
gongs
vn I
vn II
vl
vc
vb

mf

mp
mp
mp

l.vibr

l.vibr

l.vibr

ca 4'00"

Handwritten musical score for the first system, measures 59-61. The score includes staves for Clarinet (cl), Flute (fl), Bassoon (bs), Trumpet (tr), Trombone (trb), Violin (vl), Viola (vl), and Cello (cl). Measure numbers 59, 60, and 61 are indicated at the top. Dynamics include *mp* and *mf*. The music features various melodic lines and rests.

$\text{H} \text{ } \text{d} = 60$

Handwritten musical score for the second system, measures 62-65. The score includes staves for Flute (fl), Clarinet (cl), Bassoon (bs), Trumpet (tr), Trombone (trb), Violin (vl), Viola (vl), Cello (cl), and Double Bass (db). Measure numbers 62, 63, 64, and 65 are indicated at the top. Dynamics include *mf*, *mp*, and *non div.*. The music features complex rhythmic patterns, triplets, and slurs. A large watermark "MNB Moter" is overlaid on the score.

Handwritten musical score for various instruments including Flutes (Fl 1, 2), Oboes (ob), Clarinets (cl. b, cl. s), Bassoons (bsn), Trumpets (tr 1, 2), Trombones (trb 1, 2, 3, 4), Percussion (vibr. rh, cym, 2 cymbals, tmp), Horns (Ar), Cello (Cel), Violins (vn I, II), Viola (vl), Violoncello (vc), and Double Bass (vb). The score includes musical notation, dynamics (mf, f), and performance instructions such as "gliss", "L. vibr", and "tacet".



x) same as bar 17

71/3 72 5-6" 4! : 60 8- 75 77 6-7"

1st Flute, 2nd Flute, Flute III, Bassoon, Clarinet 1, Clarinet 2, Clarinet 3, Clarinet 4, Trumpet 1, Trumpet 2, Trumpet 3, Trumpet 4, Trombone 1, Trombone 2, Trombone 3, Trombone 4, Tuba, Basses

mf, mkk, p, f, cresc, decresc, tacet

Vibr. Ph., Crost., Comp., Gong

mf, f, to GRAN CASSA

Vn I, Vn II, Vl, Vc, Vb

tacet

Gran Cassa, Temp., Vn I, Vn II, Vl, Vc, Vb

mf, p, cresc, f

mf, p, cresc, f

mf, p, cresc, f

Handwritten musical score for measures 86-88. The score includes staves for vib. (vibrato), amp. (amplitude), vl. (violin), vc. (viola), and vb. (violin/bass). Measure 86 is marked with a wavy line and a box containing '86'. Measure 87 is marked with a box containing '87'. Measure 88 is marked with a box containing '88'. Dynamics include 'p' (piano) and 'dim' (diminuendo). A '5"' annotation is placed above measure 86, and a '7"' annotation is placed above measure 88.

Handwritten musical score for measures 89-91. The score includes staves for tp. b. (trumpet B-flat), vib. (vibrato), amp. (amplitude), vl. (violin), vc. (viola), and vb. (violin/bass). Measure 89 is marked with a box containing '89'. Measure 90 is marked with a box containing '90'. Measure 91 is marked with a box containing '91'. Dynamics include 'p' (piano) and 'tacet'. Annotations include '7"', '10"', and '5"'. A large watermark 'NB noter' is overlaid on the score.

Handwritten musical score for measure 92. The score includes a staff for tp. b. (trumpet B-flat). Measure 92 is marked with a box containing '92'. The measure is marked with a wavy line and a '15"' annotation.

Handwritten musical score for measure 93. The score includes staves for tp. b. (trumpet B-flat), Gr. C. (Glockenspiel), and tmp. (timpani). Measure 93 is marked with a box containing '93'. The measure is marked with a wavy line and a '12-15"' annotation. Dynamics include 'mp' (mezzo-piano). A large watermark 'NB noter' is overlaid on the score.

DURATION =
ca 7'50"

till end of tmp/Gr.C. sustain.

Terje Rypdal
7/9 2000

4/4 $\text{♩} = 60$

⚠️ TIMPANI SHOULD NOT BE RECORDED TOO CLOSE - SIMULATE LARGE CATHEDRAL.

10

⚠️ Harp and Celesta must clearly be heard.

[15] [7TH SYMPHONY]

Handwritten musical score for measures 1-4. The score includes staves for Flute (Fl.), Flute II (Flg II), Clarinet (Cl.), Clarinet II (Cl II), Bassoon (Bs.), Bassoon II (Bs II), Trumpet I (Tr I), Trumpet II (Tr II), Trombone (Tbn), Trombone II (Tbn II), Horn (Ar.), Horn II (Ar II), Cello (Cel.), Cello II (Cel II), Violin I (Vn I), Violin II (Vn II), Viola (Vla.), and Double Bass (Vcb).

Key annotations include:

- Flute: *soft mallets*
- Clarinet: *soft mallets*
- Violin I: *5th string: B4*
- Violin II: *pizz*
- Double Bass: *non divisi - upper: slow vibrato*
- Trumpet I: *AD LIB DURATIONS*
- Trumpet II: *AD LIB DURATIONS*

Handwritten musical score for measures 5-8. The score includes staves for Flute (Fl.), Flute II (Flg II), Clarinet (Cl.), Clarinet II (Cl II), Bassoon (Bs.), Bassoon II (Bs II), Trumpet I (Tr I), Trumpet II (Tr II), Trombone (Tbn), Trombone II (Tbn II), Horn (Ar.), Horn II (Ar II), Cello (Cel.), Cello II (Cel II), Violin I (Vn I), Violin II (Vn II), Viola (Vla.), and Double Bass (Vcb).

Key annotations include:

- Flute: *pp cresc - - - - mp*
- Clarinet: *pp cresc - - - - mp*
- Trumpet I: *CONTINUE [VARIATIONS]*
- Trumpet II: *CONTINUE [VARIATIONS]*
- Violin I: *s.s.*
- Violin II: *c.s*
- Viola: *(s.s) pp cresc - - - - mp*
- Violin III: *pp cresc - - - - mp*
- Double Bass: *pp cresc - - - - mp*

Other markings include *[4th: bass trombone]*, *red - - - -*, and *Basso*.



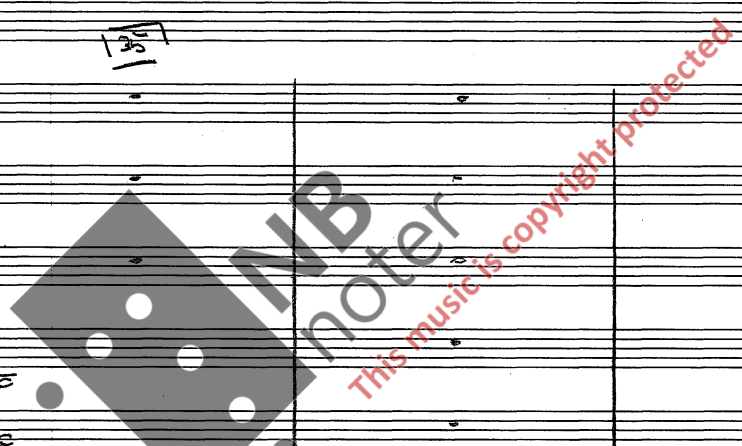
celesta player also plays Harmonium^{x1}

^{x1} Synthesizer in stereo may be used. Must always blend with orchestra. Tasteful registrations.

130

Handwritten musical score for measures 129-130. The score includes staves for Flute 1-3, Flute, Oboe 1-2, Clarinet 1-2, Bassoon, Trumpet 1-2, Church bell, Trombone, Violin I & II, Viola, and Cello/Double Bass. Measure 129 features a dynamic marking of *mp* and a *cresc.* leading to *mf*. Measure 130 includes a *gliss* marking and a *tr* (trill) marking. The Church bell part is marked *From a distance > (1)*. The Trombone part has a *tr* marking. The Violin I part has a *gliss* marking. The Viola part has a *gliss* marking. The Cello/Double Bass part has a *gliss* marking. The score is marked with a large '130' at the top.

Handwritten musical score for measures 131-132. The score includes staves for Flute 1-3, Flute, Oboe 1-2, Clarinet 1-2, Bassoon, Trumpet 1-2, Church bell, Trombone, Violin I & II, Viola, and Cello/Double Bass. Measure 131 features a dynamic marking of *mp*. Measure 132 includes a *gliss* marking and a *tr* (trill) marking. The Church bell part is marked *(2)*. The Trombone part has a *tr* marking. The Violin I part has a *gliss* marking. The Viola part has a *gliss* marking. The Cello/Double Bass part has a *gliss* marking. The score is marked with a large '131' at the top.



[40]

Handwritten musical score for 'The Forgotten Graveyard' from the 7th Symphony, page 14. The score includes staves for woodwinds (flute, oboe, clarinet, bassoon), brass (trumpet, trombone, tuba), strings (violin, viola, cello, double bass), and percussion (timpani, celesta). It features complex rhythmic patterns, triplets, and dynamic markings such as 'cresc' and 'dim'. The score is marked with a box number [40] at the top left and a page number - 14 - at the top center. The title 'THE FORGOTTEN GRAVEYARD [7TH SYMPHONY] [45]' is written at the top right. A large watermark 'NB noter' is visible across the center of the page.

THE FORGOTTEN GRAVEYARD
[7th SYMPHONY]

50

fl

fl.a

Ar

Cel

emp 1,2

Church Bell

tmp

vl

vc

vb

Adjust with pedal to avoid "unclean" sound

RIT

L.vibr

L.vibr

START FADING

CONTRINUS

(3.)

gliss

mp

pp

53

30"

Cmn L1

Cmn L2

Church bell

vc

vb

FADE

ppp STOP L.VIBRATE

Still ringing

gliss

pp

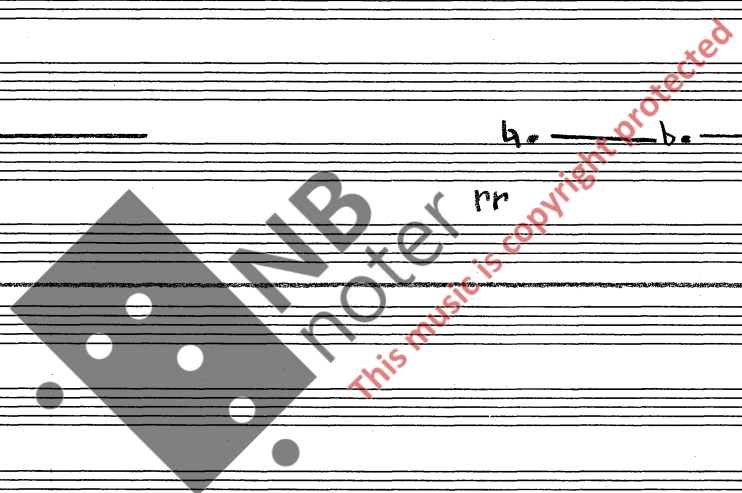
dim

ppp

FINE

Duration: 4 minutes

30/a-09



3 (9) Lento/Rubato
4 (8)

- EVENTYRSKOGEN -

5

I.R.

FL
Celesta
2 Cymbals
Wind
Bell
Chimes
Sonagli
(schellen)
vn II
vb

This system includes staves for Flute (FL), Celesta, 2 Cymbals, Wind, Bell, Chimes, Sonagli (schellen), Violin II (vn II), and Viola (vb). The Celesta part features a melodic line with sixteenth-note patterns and a 'Ped.' marking. The Cymbals part has a 'pp' dynamic and a 'gliss' marking. The Sonagli part has a 'p' dynamic and a 'gliss' marking. The vn II and vb parts have 'c.s.' markings and dynamic markings like 'pp' and 'p'.

fl
fl.a
cl
cl.b
Ar
Ccl
Campana
Wind
Bell
Chimes
Sonagli
tmp
vn I
vn II
vl
vc
vb

This system includes staves for Flute (fl), Flute Alto (fl.a), Clarinet (cl), Clarinet Bass (cl.b), Arpa (Ar), Celesta (Ccl), Campana, Wind, Bell, Chimes, Sonagli, Tom-tom (tmp), Violin I (vn I), Violin II (vn II), Violin (vl), Viola (vc), and Viola (vb). The cl.b part has a 'legato' marking. The Arpa part has a '(as sounding)' marking. The Campana part has a 'Ped.' marking. The tmp part has a 'SOFT MALLETS' marking. The vn I part has a '[sounding 2 octaves above]' marking. The vn II part has a 'c.s.' marking. The vl and vc parts have 'c.s.' markings. The vb part has a 'p' dynamic marking.

da 40"

3/4
4/8

Handwritten musical score for measures 151-155. Instruments include Flute (fl.), Flute in A (fl.a.), Clarinet in F (fg.), Cello (Cel.), Violin I (vn I), Violin II (vn II), Viola (vl.), Violoncello (vc.), and Double Bass (vb.).

Measure 151: Flute and Flute in A play a melodic line. Clarinet in F has a *dolce* marking. Cello has a *Ped.* marking. Violin I has a *c.s.* marking. Violin II has a *(c.s.)* marking. Viola, Violoncello, and Double Bass play a rhythmic accompaniment.

Measure 152: Similar instrumentation and markings.

Measure 153: Similar instrumentation and markings.

Measure 154: Similar instrumentation and markings.

Measure 155: Similar instrumentation and markings.

20

25

Handwritten musical score for measures 160-165. Instruments include Clarinet in C (ci.), Flute in G (fg.), Violin I (vn I), Violin II (vn II), Viola (vl.), Violoncello (vc.), and Double Bass (vb.).

Measure 160: Clarinet in C has a *dolce* marking. Flute in G has a *p* marking. Violin I and II have *divisi* markings. Viola, Violoncello, and Double Bass play a rhythmic accompaniment.

Measure 161: Similar instrumentation and markings.

Measure 162: Similar instrumentation and markings.

Measure 163: Similar instrumentation and markings.

Measure 164: Similar instrumentation and markings.

Measure 165: Similar instrumentation and markings.

30

Handwritten musical score for measures 170-175. Instruments include Flute (fl.), Flute in A (fl.a.), Clarinet in C (ci.), Flute in G (fg.), Celesta, Violin I (vn I), Violin II (vn II), Viola (vl.), Violoncello (vc.), and Double Bass (vb.).

Measure 170: Flute in A has a *p* marking. Clarinet in C has a *mf* marking. Celesta has a *mf* marking. Violin I and II have *divisi* markings. Viola, Violoncello, and Double Bass play a rhythmic accompaniment.

Measure 171: Similar instrumentation and markings.

Measure 172: Similar instrumentation and markings.

Measure 173: Similar instrumentation and markings.

Measure 174: Similar instrumentation and markings.

Measure 175: Similar instrumentation and markings.

ca 1' 50"

3/4 (9) MENO MOSSO
4 (8)

-18-
[35]

Handwritten musical score for measures 135-145. Instruments include C. I., fg, Cmp, vn I, vn II, vl, and vc. The score features various musical notations such as triplets, slurs, and dynamic markings like *p* and *Ped.*.

[40]

4" 3/4

[45]

Handwritten musical score for measures 140-145. Instruments include fl. a, Celesta, 2 Symbals, vn I, vn II, and vl. The score includes dynamic markings like *pp* and *pp/p*, and performance instructions such as *gliss* and *div.*.

[50]

PIU MOSSO

[55]

Handwritten musical score for measures 150-155. Instruments include fl. a, 2 Symbals, Songli, vn I, vn II, and vl. The score includes dynamic markings like *pp/p* and *pp*, and performance instructions such as *gliss*, *div.*, and *ord.*.

(3'05")

60

Handwritten musical score for strings (Violins I & II, Violas, Cellos, and Double Basses). The score includes various performance instructions such as *gliss*, *ord.*, and *div*. The notation features long horizontal lines and slurs across multiple staves.

65 LENTO

flautando

Handwritten musical score for woodwinds (Flutes I & II, Clarinet, Bassoon, and Contrabassoon). The score includes the instruction *flautando* and shows melodic lines with slurs and dynamics.

75

Handwritten musical score for brass instruments (Trumpet 1, Celesta, Violins I & II, Viola, and Cello). The Celesta part features a complex rhythmic pattern with notes beamed together. Dynamics like *mp* and *mf* are indicated.

80

Handwritten musical score for percussion and lower strings (Cymbals, Tom-toms, Snare Drum, Violins I & II, Viola, Cello, and Double Bass). The percussion parts include complex rhythmic patterns and textures. The string parts continue with long lines and slurs.

(4'20")

Handwritten musical score for measures 185-190. The score includes staves for Flute 1-3, Flute Alto, Oboe 1, 2, Clarinet in A, Clarinet in B, Bassoon 1, Bassoon 2, Contrabassoon, Arpa, Celesta, Crotales, Campanelli, and two sets of Symphonic Cymbals. The woodwind parts feature complex rhythmic patterns, including triplets and sixteenth-note runs. The string parts (Violin I, Violin II) are marked with dynamics such as *pp*, *cresc.*, *mf*, and *dim.*. A large blacked-out section covers the string parts in measures 185-188. A red watermark 'This music is copyright protected' is visible across the score.

* Ergo sounding 15va above.

195 1 2 3 4 5 6 7 8

Handwritten musical score for measures 195-200. The score includes staves for Flute 1-3, Flute Alto, Clarinet in A, Clarinet in B, Bassoon 1, Bassoon 2, Contrabassoon, Crotales, Campanelli, Violin I, Violin II, Viola, and Violoncello. The woodwind parts continue with complex rhythmic patterns. The string parts are marked with dynamics such as *pp*, *cresc.*, *mf*, and *dim.*. A red watermark 'This music is copyright protected' is visible across the score.

105

100

Vn I

Vn II

Vl

Vc

110

Celesta mp

Vn I

Vn II

Vl

Vc

115

120

Celesta

2
ymbals

Wind
bell
Chimes

Sonagli

Vn I

Vn II

Vl

Vc

VERY SLOW

125

128

129

130

15

tmp

Vn I

Vn II

Vl

Vc

Vb

AND THE EAGLE CRIES
-22-

PART OF THE 7TH SYMPHONY

17 5" 2 8" s.s. 3 7" 14 6" 15 6"

Vn I
Vn II
s.s.
c.s.
p cresc - - - f dim - - -
p cresc - - - f dim - - -
tam tam
soft mallet
mp/mf

6 22-25"

Cl
Cr 1
tam tam
at edge
mp
Vn I
Vn II
(c.s.)
p

2 4 = 72

10 11 6" 12 5"

Clcb
F1
F2
F1,2
Dr
Cmp
tam tam
ALWAYS L. VIBRATE (if not otherwise instructed)
Vn I
Vn II
Vl
Vc
mp
dim - - - - pp
dim - - - - pp L.vibr
cresc - - - - mf dim - - - -
cresc - - - - mf dim - - - -
mp
mp

Handwritten musical score for measures 15-23. The score includes staves for Piccolo (pc), Flute (fl), Flute 1 (f1), Flute 2 (f2), Clarinet 1 (cl1), Clarinet 2 (cl2), Violin I (vni), Violin II (vni), Viola (vl), Violoncello (vc), and Double Bass (vb). The music features various dynamics such as *mp* and *mf*, and includes performance instructions like *L. vibr* and *c.s.* (crescendo). There are also some handwritten annotations and markings above the flute parts.

Slightly *rit.* *80-86* QUASI RUBATO

Handwritten musical score for measures 25-30. The score includes staves for Piccolo (pc), Flute (fl), Clarinet in E-flat (cl), Violin I (vni), Violin II (vni), Viola (vl), Violoncello (vc), and Double Bass (vb). A Tam-tam instrument is also indicated. The score includes dynamics like *mp/mf* and *mf*, and performance instructions such as *To FLAUTO ALTO* and *L. vibr*. A large watermark "NB noter" is visible across the score.

135

140

Handwritten musical score for measures 135-140. The score includes staves for Clarinet in E-flat (cl), Flute 1 (f1), Flute 2 (f2), Clarinet 1 (cl1), Clarinet 2 (cl2), Violin I (vni), Violoncello (vc), and Double Bass (vb). An Alto Flute (ALTO FLUTE) is also present. The score includes dynamics like *mp* and *mf*, and performance instructions such as *L. vibr*. A large watermark "NB noter" is visible across the score.

Handwritten musical score for percussion and woodwinds. The score includes parts for Piccolo (pc), Flute (fla), Clarinet in C (cl.c), Clarinet in Bb (cl.cb), Cymbal (Cel), Tom-tom (tmp), Violin (vl), Viola (vc), and Vibraphone (vb). The music features complex rhythmic patterns, including triplets and sixteenth notes. Performance markings include *mp*, *mf*, and *gliss*. A specific instruction for the Cymbal part reads "SLIGHTLY AMPLIFIED". Above the staff, there are handwritten annotations: "145" and "1451".

Handwritten musical score for woodwinds and strings. The score includes parts for Piccolo (pc), Oboe (ob), Clarinet in C (cl.c), Clarinet in Bb (cl.cb), Bassoon (Fag), Violin I (vni), and Violin II (vni). The music features complex rhythmic patterns and melodic lines. Performance markings include *mp*, *ca 3" tact*, *quasi edge*, and *L. vibr*. Above the staff, there are handwritten annotations: "149", "150", "152", and "155". A large watermark "NB noter" is visible across the score, along with the text "This music is copyright protected".

Handwritten musical score for strings and other instruments. The score includes parts for Flute (flg), Clarinet (cr), Trombone (tbn), Trumpet (tb), Violin I (vni), Violin II (vni), and Vibraphone (vb). The music features complex rhythmic patterns and melodic lines. Performance markings include *mf*, *ord*, *sub n*, *ord*, *sub n*, and *mf*. Above the staff, there are handwritten annotations: "157", "158", "159", "160", and "165".

166

SLIGHTLY AMPLIFIED

Handwritten musical score for system 1 (measures 166-170). The score includes parts for Bass Flute, Bass Trumpet, Cello (Cel), Contrabass (Cmp), Violin (vL), Viola (vC), and Violoncello (vb). Dynamics include mf, cresc, submp, and f. Performance instructions include 'mp ped' and 'L. vibr'.

Handwritten musical score for system 2 (measures 171-175). The score includes parts for Bass Flute, Bass Trumpet, Violin (vL), Viola (vC), and Violoncello (vb). Dynamics include cresc, f, dim, and mf. Performance instructions include 'divisi' and 'mp'.

ca 20"

Handwritten musical score for system 3 (measures 181-195). The score includes parts for Bass Flute, Contra Bass Clarinet, Bass Trumpet, Cello (Cel), Tamtam, Triangles (tmp), Violin (vnl), Viola (vntl), Violin (vL), Viola (vC), and Violoncello (vb). Dynamics include mp, mf, and cresc. Performance instructions include 'mp/mf', 'mp/mf > mp', 'middle', 'edge', 'glass', 'c.s.', 's.s.', and 'with tr. basso'. A note at the top of the system reads: 'NB: BASS FLUTE, BASS TRUMPET & CONTRABASS CLARINET ARE SOLOISTS AND SHOULD EXPRESS THE MUSIC WITH A LIBERATION OF DYNAMICS, SMALL DURATIONS ALTERATIONS, ETC.'.

4'43"

75

4/4 = 104
701

x = raised a quarter tone x = lowered a quarter tone

70

71

75

186 6" 2 4 = 52 3 4 - 27- 4 4 90 6 4

Handwritten musical score for measures 186-190. The score includes staves for:

- cl cb
- bass
- flg
- cr
- tr
- trb
- vl
- vc
- vb

Measure 186: *mf*, *G.P.*

Measure 187: *mp*, *cresc*

Measure 188: *mp*, *cresc*

Measure 189: *mf*, *cresc*

Measure 190: *ff*, *divisi*

Handwritten musical score for measure 193. The score includes staves for:

- cl cb

Measure 193: *mf*, *cresc*

Handwritten musical score for measure 194. The score includes staves for:

- cl cb
- Tam tam
- vc
- vb

Measure 194: *mf*, *cresc*, *mp*, *ff*

Handwritten musical score for measures 195-197. The score includes staves for:

- bass
- fl
- cmp
- tmp
- flg
- cr
- tr
- trb
- vl
- vc
- vb

Measure 195: *mf*, *gliss*, *cresc*

Measure 196: *mf*, *gliss*

Measure 197: *mf*, *gliss*

1001

bass fl

mp

1001

bass fl

VL

mf

cresc - - - - - mp/mf

1021

bass fl

VL

VC

mp

"glass"

10"

18-20"

103

18"

104

5"

105

6"

bass flute

cl. cb

bass tp

Celesta

VL

VC

mf

mf

mf

mf

106

8"

107

4"

108

8"

bass flute

cl. cb

bass tp

109

8"

110

14-15"

111

10"

bass flute

cl. cb

bass tp

VC

VB

mp/mf

mp/mf

112

15" -29-

113

AND THE EAGLE CRIES

[7th SYMPHONY

18"

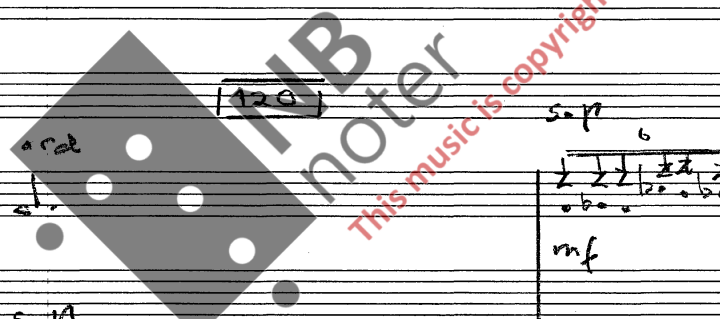
Handwritten musical score for measures 112-113. The score includes staves for bass flute, cl. cb, bass tp, vc, and vb. The key signature has one flat. Measure 112 shows a bass flute line with a dotted quarter note and an eighth rest, followed by a half note. The cl. cb and bass tp have similar rhythmic patterns. The vc and vb parts are mostly rests. Measure 113 features a complex texture with a bass flute line, a cl. cb line with sixteenth notes, a bass tp line with eighth notes, and a vc/vb line with sixteenth notes. Performance markings include 's.p./at bridge', 'ord', 'mf', and 'mp'.

* mostly overtones.

$\frac{3}{4}$ ♩ = 72-76

115

Handwritten musical score for measures 114-115. The score includes staves for bass flute, cl. cb, bass tp, vc, and vb. The key signature has one flat. Measure 114 shows a bass flute line with a dotted quarter note and an eighth rest, followed by a half note. The cl. cb and bass tp have similar rhythmic patterns. The vc and vb parts are mostly rests. Measure 115 features a complex texture with a bass flute line, a cl. cb line with sixteenth notes, a bass tp line with eighth notes, and a vc/vb line with sixteenth notes. Performance markings include 's.p.', 'ord.', 'mf', and 'mp'.



120

Handwritten musical score for measures 119-120. The score includes staves for vc and vb. The key signature has one flat. Measure 119 shows a vc line with sixteenth notes and a vb line with eighth notes. Measure 120 features a complex texture with a vc line with sixteenth notes and a vb line with eighth notes. Performance markings include 's.p.', 'ord.', 'mf', and 'mp'.

125

Handwritten musical score for measures 124-125. The score includes staves for vc and vb. The key signature has one flat. Measure 124 shows a vc line with sixteenth notes and a vb line with eighth notes. Measure 125 features a complex texture with a vc line with sixteenth notes and a vb line with eighth notes. Performance markings include 'ord.', 'mp', and 'mf'.

130

Handwritten musical score for measures 129-130. The score includes staves for vc and vb. The key signature has one flat. Measure 129 shows a vc line with sixteenth notes and a vb line with eighth notes. Measure 130 features a complex texture with a vc line with sixteenth notes and a vb line with eighth notes. Performance markings include '> esp', '> sul E esp', and '>3>r'. The text 'DURATION: ca 10'35"' is written on the right side. The date '26/11-09' and the signature 'Igor Ryzdant' are also present.

DURATION: ca 10'35"

26/11-09

Igor Ryzdant

"TUSSEMÄRKE"

TUNING: H, C, D, Eb, F, Gb, A

6" 7" 8" 4" 10"

Fl 1,2 3,4
Fr 1,2 3,4
Cr 1,2 3,4
Tbn 1,2 3,4
Tb 1,2 3,4
Ar
Cel
Vibr
Glock
Spiel
Triangle
Tree
Bell
Tree

mp
chromatic
mp
chromatic
mp
mp
mp
mp

BRASS: INDIVIDUAL BREATHING TO AVOID AUDIBLE PAUSES. xx) L. vibrare

Gr. C
Kmp

5" 20" 25"

1
2
3
4
5
6

1
2
3
4
5
6

mp
mp
mp
mp
mp
mp

mp
mp
mp
mp
mp
mp

mp
mp
mp
mp
mp
mp

mp
mp
mp
mp
mp
mp

mp
mp
mp
mp
mp
mp

d = lowered a quartertone x = raised a quartertone

[write in ARCH- parts]

"TUSSMØRKE"

191

8"

110

5"

-32-

171

3"

172

6"

173

8"

174

4"

Handwritten musical score for various instruments including Flutes, Oboes, Clarinets, Bassoons, Violins, Violas, Cellos, Double Basses, Percussion (Arche, Cymbals, Glockenspiel, Triangle, Tree, Bell), and Glass.

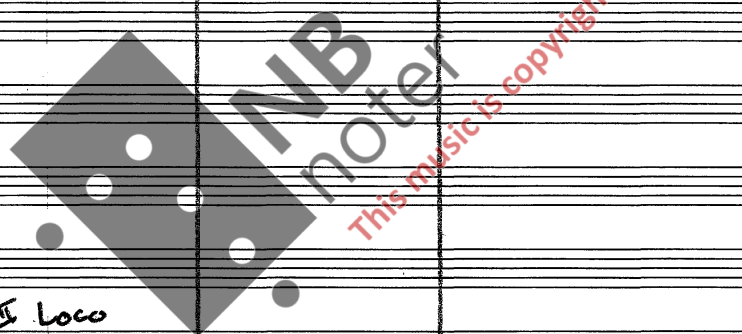
Violin I & II: Includes handwritten notes: "quarter triplet", "vn I, vn II loco", "vn I", "vn II: loco", "mp/mf", and a sequence of notes with fingerings: "1 2 3 4 5 6 7 8 9 10 11 12".

Viola: Includes handwritten note: "VC 1-b: chromatic/microintervals quasi ad lib".

Percussion: Includes notes for "Arche", "Cym", "Glock", "Spiel", "Triangle", "Tree", "Bell", and "Tree".

Glass: Includes notes: "glass", "glass cresc", "mf/ff".

General: Includes dynamic markings like "mp", "mf", "ff", and performance instructions like "cresc" and "quasi ad lib".



4/4 = 76 [15]

INTL. LEGATO

-32-

"TUSSMØRKE"

[20]

PART OF 7TH SYMPHONY
-R

The image shows a handwritten musical score for a symphony part. The score is written on multiple staves, including woodwinds (flutes, oboes, clarinets, bassoons), strings (violins, violas, cellos, double basses), and percussion (triangle, cymbals). The notation includes notes, rests, and various musical symbols such as slurs, accents, and dynamic markings. A large watermark 'MNB Noter' is visible across the center of the page. The score is divided into measures, with some measures containing rests or specific performance instructions.

*) Bør skrives ut: 12 divisi stemmer.

Handwritten musical score for a symphony, page 33. The score is for the movement "TUSS MORCE". It features a variety of instruments including flutes (fl. 1, 2, 3), oboes (ob. 1, 2), clarinets (cl. 1, 2, b), bassoons (fb. 1, 2, 3), violins (vl. 1, 2), violas (vl. 3, 4), cellos (vc. 1, 2), double basses (vb. 1, 2), and a large percussion section including timpani (tm.), snare drum (cym.), cymbals (crot.), triangle (tri.), and various bells (glöckenspiel).

The score is divided into measures, with a box labeled "122" at the beginning and "25" further down. Dynamics such as *cresc.* (crescendo) and *mf* (mezzo-forte) are indicated throughout. The notation includes notes, rests, and articulation marks. A large watermark "NB noter" is visible across the center of the page, along with the text "This music is copyright protected".

Violin I and II parts include specific fingering and bowing instructions, such as "example) cresc. simile" and "1234 567 8910 11 12".

Handwritten musical score for a symphony. The score is written on multiple staves, including woodwinds (flutes, oboes, clarinets, bassoons), strings (violins I & II, violas, cellos, double basses), brass (trumpets, trombones, tubas), and percussion (snare, cymbals, tom-toms, xylophone, glockenspiel, triangle, timpani). The score includes various musical notations such as notes, rests, dynamics (p, f, mf, cresc, decresc), articulation (accents, slurs), and performance instructions. A large watermark 'INB Noter' is visible across the center of the page. At the bottom, there are specific performance instructions for the harp and celesta: 'Arpa: C#, D#, E, F#, G#, A#, B' and 'Celesta: CHROMATIC'. The bottom of the page contains the number '3128'.

Handwritten musical score for a symphony, featuring various instruments and dynamic markings. The score is organized into systems with the following instruments listed on the left:

- Fl 1, 2
- Fl 3
- Ob 1, 2
- C. 1, 2
- Cl 1, 2
- Cl 3
- F 1, 2
- Fg 1, 2, 3
- Woodswind & Brass: Individual Breathing and Re-enter
- Flgh
- Tr 1, 2
- Ctr 1, 2, 3, 4
- Tbn 1, 2
- Tba 1, 2, 3, 4
- Tr
- Ar
- Cel
- Vibr
- Glab
- Sp
- Gmp
- Crot
- tmp
- Vn I
- Vn II
- Vl
- Vc
- Vb

Key markings and annotations include:

- Dynamic markings:** *pp*, *pp dim*, *tacet*, *pp cresc*, *pp*, *p*, *3p*.
- Performance instructions:** "WOODSWIND & BRASS: INDIVIDUAL BREATHING AND RE-ENTER", "Ar", "Loco", "cel", "secco", "basso", "ab".
- Structural elements:** Bar lines, repeat signs, and a large watermark "NB noter" with "This music is copyright protected" overlaid diagonally across the center.

Trumpet basso 137

trp.b 2ⁿ 38 20ⁿ

Gr.C

kmp 2 TIMPANI

mp

L. vibr

L. vibr

trp.b 39 6ⁿ 41 10ⁿ

VC

VB

mp

SLIGHTLY DIFFERENT TUNING

mf

gliss

gliss

dim - - - r

trp.b 42 12ⁿ 43 18ⁿ

Cel

VC

VB

mf

dim - -

trp.b 44 10ⁿ 45 20ⁿ

Cel

Vibr

Cmp

Crot

VC

VB

mp

gliss

gliss

trp.b 46 15ⁿ 47 7ⁿ 48 8ⁿ

Cel

glock + triangle

Gr.C

kmp

VC + VB

rit - - -

8va - - -

mp

gliss

Handwritten musical score for measures 491-501. Instruments include Trp. b, Gr. C, tmp, vl, vc, and vb. Includes markings like "L. vibr" and "esp".

Handwritten musical score for measures 521-533. Instruments include Trp. b, Gr. C, tmp, vn I, vn II, vl, vc, and vb. Includes markings like "esp" and "p".

Handwritten musical score for measures 154-156. Instruments include Trp. b, Gr. C, tmp, vn I, vn II, vl, vc, and vb. Includes markings like "pp", "dim", and "niente".

DURATION 7' 40"

LAST PART OF MOVEMENT II - 7TH SYMPHONY

MAY BE PERFORMED SEPERATELY UNDER THE TITLE:

"TALES OF DREAMS REMEMBERED"

TOTAL DURATION: 37' 30"

RES FLORD
5/3-2011

Lerje Rypdal

