

TERJE RYDDAL

DURATION: ca 1 1/2 time

## PER ULV GOES ELECTRIC

OPUS 99

DETTE VERKET ER SKREVET SOM EN HYLLESTIL

CHUCK JONES

[PER ULV'S FAR]

### THE ROADRUNNERS:

PALLE MIKKELBORG: TROMPET / "BASS-TROMPET"

OLA KVERNBERG: VIOLINO BASSO - vn.b / VIOLA - vl  
& VIOLINO - vn

SVANTE HENRYSON: CELLO - vc

OLE MORTEN VÅGAN: CONTRABASS - vb /

5 STRINGS ELECTRIC BASS - el.b

OLAV DALE: CONTRABASSCLARINET [to low Bb] - cl.cb

ALTO-FLUTE - fl.a / TENOR-SAXOPHONE [solo]

PICCOLO-FLUTE - pc

STÅLE STORLØKKEN: B-3 HAMMOND +

SYNTHESIZERS [with MELLOTRON and RMI sound banks]

PAOLO VINACCIA: DRUMS / CAMPANE / PERCUSSION /


SAMPLING

&

DON RYPERO: ELECTRIC GUITARS / CROTALLES.

PER ULV GOES ELECTRIC ER BESTILT AV

RIKSKONSERTENE.

MED TAKK TIL ALLE SOM ER INVOLVERT 



NB: OPENING SOUNDING ACOUSTIC; possibly overhead microphones when necessary.

"AND THEN THEY WERE OFF" OPUS 99 - PART I -

13 10" 12 4" 13 15"

tr.b  
Gr.C

mp cresc ----- ff

14 6" 15 5" 16 5" 17 5" 18 8"

fl.a  
tr.b  
vb

arco sul A

19 20"

tr.b  
vb

mp sul E + A < > cresc ----- mf

20 with slow vibrato

legato 20"

tr.b

gliss 21 18" 22 5" 23 7"

tr.b  
el.g  
A  
comp  
vb

with thick VI string tuned to A

L.vibr mf

f > sul A

24 5" 25 8" 26 5" 27 5" 28 5"

el.g  
A  
comp  
vc  
vb

mp cresc ----- mp

L.vibr

29 8" 30 5" 31 6" 32 5"

fl.a  
el.g  
A  
vn  
vc  
vb

mp/mf

mp cresc ----- mp

NB: GRADUALLY "OPENING" THE P.A. → [from bar 13]

123

7"

124

- 2 -

PER ULV GOES ELECTRIC  
12'

125

8" R.

fl.a  
cl.g  
A  
cmp  
vn  
vc  
vb

3'27"

*quasi rubato*

fl.a  
cl.g  
A  
cmp  
vn  
vc  
vb

6"

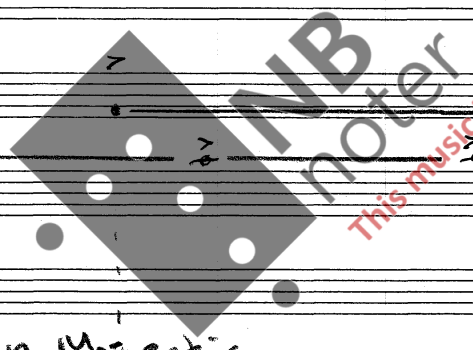
*pp cresc*

fl.a  
tr.b  
cl.g  
A  
Keyb  
Gr.C  
vn  
vc  
vb

7"

130

minimum 3"



*f Deep, Majestic*

TACET

TACET

TACET

TACET

TACET

TACET

131

6"

132

*dolce*

12"

4

4

133

134

tr.b  
cmp  
vn.b  
vc  
vb

G.P.

*pizz*

*pizz*

*pizz*

arco

arco

arco

vn. basso; sounding 8va below.

ca 4'27"

~ [35]

tp. b

perc "WHISPER" ~~xylophone~~ cymbals, drums, bells, triangles

vn. b arco

vc #

vb #

pp cresc --- p

[36] 8" [37] 12" [38] da 15"

cl. cb 8

tp. b tacet

Keyb Beautiful strings with glimpses of beautiful nude ladies

perc "WHISPER" continued

vn. b pizz arco, esp. solistic

vc pizz arco

vb pizz arco

pp cresc --- p

Synth registration very important.

[39] 8" [40] 10" [41]

cl. cb 8

Keyb

perc TACET

vn. b

vc

vb

12" [42] da 20"

cl. cb 8

Keyb

perc BELLS

vn. b

vc

vb

da 6'10"

143

12"

144

Handwritten musical score for measures 143-144. Instruments include cl. cb, Keyb, perc, vn. b, vc, and vb. The score includes notes, rests, and performance instructions such as "Tacet" and "Cymbals AD LIB".

12"

145

15"

Handwritten musical score for measures 145-146. Instruments include cl. cb, Keyb, perc, vn. b, vc, and vb. The score includes notes, rests, and performance instructions such as "tr" (trills), "rubato", "continuo Cymbals, bells etc.", and "sul A".

146

15"

Handwritten musical score for measures 146-147. Instruments include cl. cb, Keyb, perc, vn. b, vc, and vb. The score includes notes, rests, and performance instructions such as "miss" and "arco".

147

148

10"

Handwritten musical score for measures 147-148. Instruments include cl. cb, Keyb, perc, vn. b, vc, and vb. The score includes notes, rests, and performance instructions such as "gliss", "arco", and "TO CAMPANE".

TO FLAUTO ALTO

ca 7'25"

PER ULV GOES ELECTRIC

12" - 5-

ELECTRIC I XI

10" < R

fl.a *mp*

Keyb

cmp *mf* *b. vibr.*

vn. b *pp* *cresc*

vc *pp* *cresc*

vb *pp* *cresc*

**NB**  
 [X] BARS [149 - 167] ALSO LATER AS INTERLUDES

*dim.*

THE ACME ORCHESTRA; SOUNDING LIKE A SYMPHONY ORCHESTRA!  
 USE OF "CREATIVE" MULTIPLE ECHO/REVERB. LIGHTS CHANGE TO  
 A MAGIC PER ULV  
 DESERT.

4/4  $\text{♩} = 50$

fl.a *p*

Keyb *p*

cmp *mp/mf*

vn. b

vc

vb

STALE + PALLE : REGISTRATION - LUSH STRINGS [STEREO]

fl.a

Keyb

cmp

vn. b

vc

vb

Handwritten musical score for measures 160-165. Instruments include Fl. a, Keyb, Comp, vn. b, vc, and vb. The score features various notes, rests, and dynamic markings such as 'TO DRUMS' and 'Tutti = cresc'.

167

TRANSITION - LIGHTS "OPENS UP" 12-15"

168

ca 30"

Handwritten musical score for measures 167-168. Instruments include Fl. a, el. g, Keyb, Drums, vn. b, vc, and vb. Includes annotations like 'START SOLO', 'cresc', 'COLOURS OF D/B', 'FREEBAG', and 'jazz jazz AD LIB'. A large watermark 'NB noter' is visible across the page.

4'55"

"CHASING THE ROADRUNNER - IN HIS DREAM"

169 CUE CUE 170

Handwritten musical score for measures 169-170. Instruments include el. g, B-3, and vb. Includes annotations like 'Solo', 'Ab', 'G', 'Esus (also quasi F# Gb)', 'Esus F', and 'PIZZ OFTEN IN HIGH REGISTER IN AND OUT OF CHORDS'.

\*) WITH BASS-PEDALS + MELLOTRON SYNTH.

\*) CHORDS CONTAINING SCALE TONES TO MAKE CLUSTERS +

MELLOTRON "ORCHESTRA-LINES" ETC

171 CUE

Handwritten musical score for measure 171. Instruments include THE PER ULV COMBO. Includes annotations like 'Em + G-A-H', 'Hm + G-k-H-D', 'Hm', 'REP AD LIB ca 3 min'.

ca 13'



THE PER ULV COMBO 72 ca 2 min

FAST 4/4 HI-HAT etc GUITAR SOLO CONTINUED

THE PER ULV COMBO 73 ca 3 min

THE ACME INSTANT KEYBOARD-SOLO [tribute to JIMMY MC GRIFF]

THE PER ULV COMBO 74 ca 1 min

REPEAT BARS 69 - 71 TWICE ca 19'

EXPLORING NEW PLANS; HOW TO OUTSMART THE ROADRUNNER

PLAN NR. 1 75 ca 2 min

DUO BASSTRUMPET VS BASSVIOLIN

ALSO SYNTH WHEN NEEDED.

76 PLAN NR. 2 ca 1'30"

+ DRUMS / VB / CL. CB + VC LINES etc

PASTICELLO-EFFECTS

77 PLAN NR. 3

PLAN NR 1 + 2 CONTINUED

el.g. AD LIB SOLO [Keyboard-chords in part] REGISTRATION AS 78

Keyb

79 PLAN 1 + 2 CONT. 10" 80 12" 81 8"

el.g. + Keyb

82 BUILDING UP - CRESCENDO → 7" 83 10" 84 7" 85 12"

PLAN 1 + 2 CONT.

el.g. + Keyb

cresc - - - - - f - - - - - ff

86

cl. cb 7: A sus AD LIB

tr. b 7: A sus AD LIB TACET

el. g Solo Asus

Keyb

drums

vn. b } AD LIB A SUS

vc } AD LIB A SUS

vb } AD LIB A SUS

IMMEDIATE STOP

IMMEDIATE STOP

IMMEDIATE STOP

IMMEDIATE STOP

IMMEDIATE STOP

88 6" 89 7" 90 6" 91 6" 92 8"

tr. b 7: G.P. f G.P. mf

B-3 7: PEDAL-BASS mp

93 10" 94 15" 95 10"

fl. a 7: cresc - - - p - - - mp - - - TACET

tr. b 7: pp cresc - - - mf - - - mp - - -

B-3 7: - - -

vn. b 7: pp cresc - - - p - - - mp - - - mf - - -

vc 7: pp cresc - - - p - - - mp - - - mf - - -

vb 7: pp cresc - - - p - - - mp - - - mf - - -

96 8" 97 10"

tr. b 7: > >

B-3 7: - - -

Gr. C 7: - - -

vn. b 7: glass

vc 7: glass

vb 7: glass

mp cresc - - -

198

-9-

12" PER ULY GOES ELECTRIC

7"

100

1"

Handwritten musical score for Part I, measures 198-200. The score includes staves for:

- tr.b (Trumpet B-flat): *gliss*, *cresc.*, *f*
- B-3 (Bassoon 3): *cresc*, *f*
- Gr.C (Guitar): *mf*, *cresc*, *f*
- vn.b (Violin B-flat): *cresc*, *f*
- vc (Viola): *cresc*, *f*
- vb (Violoncello): *cresc*, *f*

Additional markings include *ff*, *WILD QUASI CHROMATIC*, and *Bartok Miss*.

DURATION: 25'55"

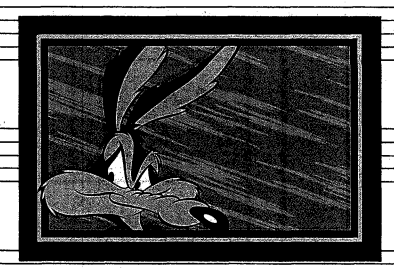
END OF PART I

13/12 - 2010

ATTACCA

PART II

"A PECULIAR SMILE"



Handwritten musical score for Part II, measures 121-122. The score includes staves for:

- Keyb (Keyboard): *niente*, *ppp*, *pp*, *p*
- perc (Percussion): *bellchimes, bells etc.*

Measure 121 is marked *Mellow strings with touch of female choir ca 15"*. Measure 122 is marked *ca 8"*.

Handwritten musical score for Part II, measures 13-17. The score includes staves for:

- el.g (Electric Guitar): *mp*, *overdrive, echo, sustain*
- Keyb (Keyboard)
- perc (Percussion): *AD LIB "SILVER-BELLS"*

Measures 13, 14, 15, 16, and 17 are marked with durations: 10", 15-18", 4", 5", and 8" respectively.

6/8 MEDIUM TEMPO  
harmon

- 10 -

PER ULV GOES ELECTRIC AT REPRISE VIOLIN

1-R

10

tr

Piano Cm7 AD LIB

drums ACME INSTANT BRUSHES AD LIB

vb Cm7 ACME JAZZ BASS

Chords: Eb/D, Dm sus

15

tr

Piano /

drums

vb Dm sus

Chords: Ab/G, Fm7, Gm7, Gm7

20

25

tr

Piano Am7 Hm7

drums

vb Am7 Hm7

Chords: G/F#, Ab/G, Fm7, Gm7, Gm7, Am sus

30

1. NB violin c.s. →

tr

Piano Bb/A, D/Bb, Db/C

drums

vb Bb/A, D/Bb, Db/C

Chords: Cm7

ca 3'15"

tp  $\text{AD LIB } C_m^7 \rightarrow$  CONTINUED

Keyb  $- \text{QUASI SOLO} -$

+B3  $C_m^7$  CHORDS, DEEP DRONES etc  $\rightarrow$  CONTINUED

drums STILL  $\frac{6}{8}$   $\rightarrow$  CHANGING TO  $\frac{4}{4}$  HI-HAT - JUST FOOT  
 $\text{X X X X X X X X}$  REPEATED  $\rightarrow$   
 $\text{L L L L L L}$

vn  $\text{AD LIB } C_m^7$  EFFECTS MAY BE USED TASTEFULLY  $\rightarrow$  CONTINUED

vc  $\text{AD LIB } C_m^7$  EFFECTS MAY BE USED TASTEFULLY CONTINUED

vb  $C_m^7 \rightarrow$  CONTINUED

$\frac{4}{4}$  = 86-90  
 $\frac{4}{4}$  135

tp  $\text{PLAYING [GUITAR] CAMPANE}$

Keyb  $G_m^7$

+B3  $G_m^7$

drums ONLY HI-HAT  
 $\text{X X X X X X X X}$  COMP  
 $\text{L L L L L L}$

vn  $\text{AD LIB } G_m^7$

vc  $\text{AD LIB } G_m^7$

vb  $\text{AD LIB } G_m^7$

cl, cb  $\text{SOLO AD LIB } G_m^7$

tp  $\text{AD LIB } G_m^7$

cro. tel. g  $\text{AD LIB } G_m^7$

Keyb  $F_m^7 G_m^7$   $\text{AD LIB } G_m^7$

+B3  $\text{AD LIB } G_m^7$

drums COMP NB: KEEP HI-HAT OR SIMILAR CYMBALS  
 $\text{X X X X X X X X}$   
 $\text{L L L L L L}$  CHANGE TO

vb  $\text{AD LIB } G_m^7$  EL. BASS  
 5 STRING  
 SPECIAL TUNING  
 DOWN TO  
 LOW A.

TUTTI: SPACY

ca 7'35"

150

Handwritten musical score for measures 150-160. The score includes staves for:

- cl. cb (Clarinet in C): Musical notation with notes and rests.
- tr (Trumpet): Labeled "ENDING SOLO" with a long horizontal line.
- el. g (Electric Guitar): Labeled "START SOLO" with a long horizontal line.
- Keyb + B3 (Keyboard + Bass): Labeled "AD LIB BACK GROUND A SUS etc." with a long horizontal line.
- drum: Labeled "CONTINUED GRADUALLY HEAVIER" with a long horizontal line.
- el. b (Electric Bass): Musical notation with notes and rests.

155

160

Handwritten musical score for measures 155-165. The score includes staves for:

- el. g (Electric Guitar): Labeled "SOLO CONTINUED" with a long horizontal line.
- Keyb + B3 (Keyboard + Bass): Labeled "CONTINUED" with a long horizontal line.
- dr (Drum): Labeled "CONTINUED" with a long horizontal line.
- el. b (Electric Bass): Musical notation with notes and rests.

165

167 (4)

OPEN SECTION ca 2'30"

Handwritten musical score for measures 165-175. The score includes staves for:

- el. g (Electric Guitar): Labeled "SOUNDS, FEEDBACK etc - STILL SOLO".
- Keyb + B3 (Keyboard + Bass): Labeled "NB: STALE + PALLID [Keyb.]".
- dr (Drum): Labeled "SOUNDS + MELLOWTRON LINES".
- el. b (Electric Bass): Labeled "NEW 'OPEN' COMP".
- el. b (Electric Bass): Labeled "SIMILE AD LIB".

ca 11 min.

4/4 168

170

175

Handwritten musical score for measures 168-175. The score includes staves for:

- cl. cb (Clarinet in C): Musical notation with notes and rests.
- el. g (Electric Guitar): Labeled "CONT. AD LIB" with a long horizontal line.
- STAGE + PALLIS (Stage + Percussion): Musical notation with notes and rests.
- dr (Drum): Labeled "MORE AND MORE BELLS AND CYMBALS" with a long horizontal line.
- vn (Violin): Musical notation with notes and rests.
- vc (Violoncello): Musical notation with notes and rests.
- el. b (Electric Bass): Musical notation with notes and rests.

180

181

8-10"

Handwritten musical score for multiple instruments:

- cl. ob:** Clarinet in B-flat, 2nd staff.
- cl. g:** Clarinet in G, 3rd staff.
- 5/8 + PALM:** 5th and 6th staves.
- dr:** Drums, 7th staff.
- vn:** Violin, 8th staff.
- vc:** Viola, 9th staff.
- d.b.:** Double Bass, 10th staff.

Annotations and markings:

- TO TRUMPET:** Marked on the right side of the 5th and 6th staves.
- BELLS AD LIB:** Marked on the right side of the 7th staff.
- TO CONTRABASS:** Marked on the right side of the 10th staff.
- tuft: p** (piano) marking on the 8th staff.

~ 182

REPEAT BARS 181 - 183 ; THEME WITH REPEAT

NB: 5/8 MELOTRON/RMI sounds [some clare ECM, "waves" etc.]

CODA

~ 183

20-25"

AD LIB CM

SLOWLY FADE OUT

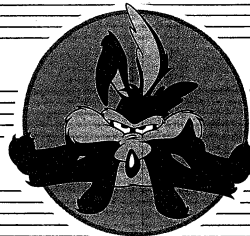
DURATION: ca 14'10"

END PART II

TOTAL DURATION ca 40 MINUTES

# INTERLUDE I

## "PER ULV I TENKEBOKSEN"



11" 10" 12" 13" 13-15"

Fl. a  $\text{CROTALLES}$   $mp$

T.R.  $mp$

PALLE  $mp$  *cresc* - - - - -  $p$

STÅLE  $mp$  *cresc* - - - - -  $p$

Cmp  $mp$

NO: OLA BRKESJ

VL  $pp$

VC  $pp$

VB  $pp$

4/4  $\text{♩} = 50$  [11] - [27]

TUTTI REPEAT bars [44] - [67] from PART I NB: T.R. som campana (dobler)  
PALLE som STÅLE

SOLO molto espressivo [28] **ATTACCA**  
sub  $+$   $b$   $+$   $b$  20-25"

[29]  $b$   $+$   $b$  15-18"

[30]  $b$   $+$   $b$   $+$   $b$  15"

[31]  $b$   $+$   $b$   $+$   $b$   $+$   $b$  25"  
*poco a poco crescendo* - - - - -  $f$  - -  $ff$

[32] AD LIB SMILE + PER ULV'S VIRTUOSO-DREAM **MINIMUM: 2 MINUTES**

[33] 15" [34] 25"  
VL REPEAT [30] 18 REPEAT [32]

DURATION: ca 6'10"  
END INTERLUDE I  
TOTAL: ca 46 min



PART III

INTRO: "PER ULV SPILLER LUFTGITAR!"

el. g *AD LIB*

CHORDS *mf/lx*

perc *xx) BELLS, SCHAGGI, TAMBOURINE, TRIANGLES etc*  
*SHAKE YOUR MONEYMAKER [OR YOU WON'T GET PAID TONIGHT!]*  
*xx) PADLO + DESSIM VIL *mf/lx**

ca 10" *xxx* 12" 10" 10" 10" 15" 12"

el. g *AD LIB*

CHORDS *TACET*

perc *CONTINUED*

ca 10" 8" 7" 10" 6"

el. g *AD LIB*

CHORDS

perc *CONT.*

ca 5" 5" 5" 5" 7" 8"

el. g *AD LIB*

CHORDS

perc *CONT.*

vb *arco* *pizz (jazz)*

15-20" 4 *CUNNING PLANS - DEVIOUS PLANS* *FADE OUT* *FADE OUT*  
*76-80* 12" 120"

*GRADUALLY COMP*

LUFTGITAR: ca 2'40"

Keyb *LIKE FENDER RHODES WITH STEREO PANNING*

dr *COMP*

vb *TRIP*

G69 F69

125

STILL " CUNNING PLANS - DEVIOUS PLANS

MELODY  $\text{♩} = 76-80$  [30]

Keyb [Fender Rhodes]  $E\flat 6^9$   $D\flat 6^9$   $E\flat 6^9$   $D\flat 6^9$   $G\flat 6^9$   $F\flat 6^9$

dr || DANCING, JAZZY, OPTIMISTIC, FUN!

vb  $b_0 b_1 b_2 b_3 \dots$

ESP

[35]

MELODY: OLAV - TENOR SAXOPHONE [REMEMBER PER IS A PHAROAH SANDERS FAN!]  
 + OLA [own choice] + SVANTE [8va basso] + PALLE/tp + T.R.

MELODY [40]

Keyb  $G\flat 6^9$   $F\flat 6^9$   $G\flat 6^9$

dr

vb REP

MELODY [45]

Keyb  $F\flat 6^9$

dr Remember Manfred: "Dancing Like A Fan on the Wind!"

vb REP

MELODY [50] [55]

Keyb  $G\flat 6^9$   $F\flat 6^9$

dr

vb REP

AD LIB SOLO OLAV

TEN. SAX [60]

OLAV SOLO

Keyb  $E\flat 6^9$   $D\flat 6^9$   $G\flat 6^9$   $F\flat 6^9$

vb  $b_0 b_1 b_2 b_3 \dots$

+ drums: continued

65

4/4

OLAV SOLO

Keyb G<sup>b9</sup> F<sup>69</sup> D<sup>69</sup> C<sup>69</sup>

dr CONTINUED

vb

SOLO CONTINUED

MORE OPEN TONALITY

SIMILE AD LIB

X) REPEATED FROM BAR 54 WITH INTERNAL REPETITIONS DURATION ca 8'30"

69 15" 70

min. 30"

OLAV END OF SOLO

T.R. el.g. A TONALITY BACKGROUND

SOAL Keyb SKYWARDS; END OF DAREDEVIL AD LIB A TONALITY

PAOLO dr BACK TO "REALITY"

vc (SVANTE SOLO) START SOLO - A TONALITY

vb CONTINUE A TONALITY

71

A-50

minimum 1'30"

PALLE ORCHESTRAL LINES - FRAGMENTS - MESSIAN M/PAUSER AD LIB

el.g CONTINUED + CROTTLES

Keyb CONTINUED + MELLOTRON LINES CONTRA PALLE

dr ALSO OF SOUNDS + "FRAGMENTED" COMP NB ALWAYS IN TIME [KEEP THE BEAT VERY CLEAR]

vc SOLO AD LIB

vb FRAGMENTS OF BASSLINE NOW IN 1/4 ||| 6/8 ||| ALTERNATING WITH ARCO

ex vb 7: 2 + p

b.o. + . ±

3/32 p < + > < ||| ||| ||| ||| |||

NB + OLA = ETTERHVERT PERCUSSION SONAGLI OR TAMBOURINE

D-50 [72]

ca 12" - 18 -

[73]

PER ULV GOES ELECTRIC

ca 1 min

T.R.

PALE TACET OR FINISH

T.R. el.g. TACET

STILE Keyb. SKYWARDS

PAOLO END OF RETURN OF PER ULV AD LIB

perc AD LIB med SVANTE

SUNDR Soln

OLE MORIEN VERY RATIONAL

TIL ALLE MULIGE GELLO VIRTUOSO TRICKS

NB: SLUTT SPILLENDE STRÆNDE!

CHANGE TO EL. BASS

5th STRING TUNED TO C7

PAOLO TIGHT COMP with HIGH HAT [fat!]

GLA START SOLO

el.b.

[80]

Minimum 3 min

el.g. JOIN AFTER A WHILE

Keyb. MOSTLY B-3 COMP/CONTRALINES

dr

OLA LE GRANDE SOLO ; "NATT PÅ RYPDALSSØTRA!"

el.b. REPEATED WITH VARIATIONS

VARIER "MELLOM-TONARTER"

[84]

[84]

ca 2 min

tp 3 START SOLO

el.g. SOUNDS / BACKGROUND

Keyb. FRAGILE

dr SOFT BUT TIGHT

el.b. SIMILAR AD LIB

ca 17 min

TUTTI: SUBITO  $\text{f}$

[total 63 min]

4/4 [65]

cl.cb *mk/k*

tp *SOLO CONT.*

el.g *CONT.*

Keyb *TIGHTER*

dr *TIGHTER*

cl.b *l. vibr*

[70] *SIMPLE AD LIB*

ca 1 min [73]

ca 55"

cl.cb *DISCREET BACKGROUND LINES, GROWLS etc*

tp *SOLO*

el.g *CONT.*

Keyb *REPEAT [18] - [35]*

dr

cl.b *CONTINUED* *REPEAT [18] - [35]*

ca 55" [74]

ca 55" [75]

ca 2 min

Tutti *REPEAT [36] - [53]*

*REPEAT "PER ULV SPILLER LUFTGITAR" RASKERE VERSION*

*NB: SKIPPING IN/OUT STEMMING FOR ÅUNNER BLANG*

ca 3 min [76]

ca 55" [77]

SKYWARDS *CURSE 1x*

*DUO STÅLE / PAOLO*

ca 5 min [78]

PAOLO *PAOLO'S INSTANT ACME "PER ULV-SOLO"*

end: THE TRAIN!  
[SAY NO MORE!]

DURATION ca 31.20"

END PART III

TOTAL DURATION  
1 H 17 M

# INTERLUDE II



## PER ULV, TENKEROKSEN - IGJEN

flautando

20"

Reverb, Echo effects

2 min.

VL flautando

VC flautando

VB flautando

REPEAT bars [45] - [67] (from PART I)

Archi: niente cresc - - - - - pp

SVEN: SKAL LÅTE gam 60 mann!

ca 3 min.

VL

VC SMILE AD LIB

VB

### THE PER ULV DREAM-STRING-ORCHESTRA!

15-20"

10"

VL "A BRIGHT LIGHT FLAGEOLETS"

VC "A BRIGHT LIGHT FLAGEOLETS"

VB "A BRIGHT LIGHT FLAGEOLETS"

echo, reverb

echo, reverb

echo, reverb

DURATION ca 6 min  
[TOTAL 1H 23M]

ATTACCA

# PART IV

## SINATRA NEVER LEFT THE BUILDING.

PALLE'S CORNER  
harmon

tp

Keyb "Mellow"  
Full stereo

tp

Keyb

tp

Keyb

PROLO STARTER  
VISPEKOMP

ca 50"

SLOW QUASI SWING; THINK OF SINATRA SNAPPING HIS FINGERS + DEFINITELY OVERTONES OF TWINS PEAKS.

4  
4 [B]

ONLY LAST TIME BEFORE SOLO [13]

cl.cb  
tr  
el.g  
Keyb  
vb  
dr

cl.cb: mp  
tr: solo FA/Bb  
el.g: "JUST CONSIDERING THE CHORDS"  
Keyb: FA/Bb  
vb: "WALKING BASS"  
dr: CONTINUED

cl.cb  
tr  
el.g  
Keyb  
vb  
dr

cl.cb: gliss  
tr: Fm, Am7, Fm7, Em7  
el.g: A, Fm, A, Am7, Fm7, Em7  
Keyb: G, Fm, A, Am7, Fm7, Em7

cl.cb  
tr  
el.g  
Keyb  
vb  
dr

cl.cb: gliss  
tr: Fm, A, A, A  
el.g: Fm, A, A, A  
Keyb: Em7, Fm, A, A

PALLE: SOLO X GANGORRA  
CUE SUITE TIL OLAV

Tutti

[C] [D] [E]

Solo (SOFT) cl.cb  
Repeat [13] - [37]

Keyboard solo  
Rep [13] + [37]

Rep [A]

NB: cl.cb FRAGILE FRAGMENTS  
el.g. ESCALINES  
vb: high pizzicato - avoid roots.

END PART IV

Duration: ca 7 min

PART V

FINALE : "WHISTLE WHILE YOU HUNT"

[A] START PER ULV FILM

[B] on Cue

H 4/4 = ca 140 "WHISTLE WHILE YOU HUNT"

PICCOLO FLUTE

pc

el.g

Keyb

MELLOTRON

SYNTH

pc

Keyb

vb

perc

fingercymbals or similar

pizz

mf

170

175

pc

Keyb

vn

vc

vb

perc

AD LIB SIMILE

180

2 "whistling"



PC  
Keyboard  
Vn  
Vc  
vb  
perc ADULTS

THE PER ULV INSTANT PARTY  
[IKKE FOR BESTEMT]

SOLO-DEL [IKKE FØLGE VED LODDTREKNING]

G / G / F# / G / F / C / Eb / G / // G / // G / // TEMA REP

ETTER FLERE SOLOER:

CUE

REP [C] [MELLOMDEL]

TEMA REP. FLERE GANGER. ETTERHVERT  
TUNNES UT [GRADVIS] TIL BARE PLYSTRING,  
FORSVIKIG VB-PIZZ OG FINGER CYMBAL

SLUTTER SAMTIDIG MED SLUTT PER ULV FILM.

POW!

ca TID 6 MINUTES

TOTAL DURATION: 1 H 30 M

RESTJORD 10/1-2011

10-1-11

ettersyn: 11-1-11

*[Signature]*