

"DET BLÅ FOLKET" op. 40

Partitur påpebynt 14/4 - 87 Trefjord
Terje Rypdal

① 6" ② 2" ③ 3"

Flutes - fl [also 1 bass flute - see page 29]

Corneo inglese - ci

Bassoon - fg

trumpets - tp

french horns - cr

Keyboards I; Emulator

Keyboards II; Polysynth

violins - sdo

violas sdo

celli - vc

contrabasses - vb

« Her røven iljaskrik i knær og knollj
so harinj skvætt vetskremt på bænfrøsinj vollj
men under dei månebleike svaberg
der dansar dei - hulder og hambukk og troll.»

Inguar Rypdal.

INTRO; "TUELÄTT"

Registrations:
> bell-like attack → windy strings

Reverb;
Lexicon 224
or similar

No reverb [but reverb and
or echo - echo should be used
elsewhere]

[D, D#, E, E] Registration; "distant" bells + archi

ppp cresc - - - - - p dim - - - - -

xxx sul ponticello - quasi flautando repeated con sord., s.p.

xxx sul ponticello repeated - quasi flautando con sord., s.p.

xxx sul ponticello quasi flautando repeated con sord., s.p.

1 solo dolce gliss

2 xxx solo dolce gliss

3 solo dolce gliss

4 solo dolce gliss

① ~ = senza tempo - duration given in seconds

xxx † = raised a quarter tone

d = lowered a quarter tone

||||| = uneven time - constantly changing between a forward and a hesitant motion

xxx A MINIMUM OF 4 CELLS IS REQUIRED - A NORMAL SYMPHONIC STRING SECTION IS RECOMMENDED BUT THIS PIECE MAY ALSO BE PERFORMED WITH A SMALLER STRING SECTION.

- 2 -

④ 2" ⑤ 3" ⑥ 3" ⑦ 6" ⑧ 6"

*) subito molto vibrato

⑨ 4" ⑩ 3" ⑪ 3" ⑫ 4" ⑬ 4" ⑭ 5" ⑮ 4" ⑯ 3"

Keyb. I Emulator *) pp

Keyb. II Synthesizer **) pp

*) Emulator or similar sampler synthesizer. Registration: a mixture of air, strings (mellow) and choir.

**) Registration: close to the Emulator but with a blend of french horns.

NB: Registrations are meant as clues - the performers should try out different possibilities and then decide what's best.

4/4 = 76
17

18

19

20

6"

21

4"

vn 1 senza sord., s.p.

vl 1 senza sord., s.p.

vl 2 senza sord., s.p.

vc 1 sul C - molto vibrato dim - - - - pp

vc 2 sul C - molto vibrato dim - - - - pp

vc 3 sul C - molto vibrato dim - - - - pp

vc 4 sul C - molto vibrato dim - - - - pp

x] ▲ = unspecified high tone ; a small cluster should be the result.
 xx] vc ; triplets ; spiccato

Keyb I

Reg. as before

10" 23 4"

vn 1 sub ff (accl.) (rit) dim - - - - pp

vl 1 sempre p

vl 2 sempre p

vc 1-4 p

Keyb I

4" 25 5" 26 4" 27 3" 28 5"

sub ppp

morendo - - - -

vn 1 tacet

vl 1 sub ff 3 > p tacet

vl 2 sub ff 3 > p tacet

vc 1-4 sub ppp

s.p. ord s.p.

p pp

morendo - - - -

[ca 2']

x] Z = fast tremolo (s.p. = sul ponticello)

4 4 = ca 70

- 4 -

(29)

(30)

(31)

(32)

(33)

Handwritten musical score for orchestra, measures 29-33. The score includes staves for strings (1st and 2nd violins, violas, cellos, double basses), woodwinds (flutes, oboes, clarinets, bassoons), brass (trumpets, trombones, tubas), and a double bass line. The title "DANS I TUSSMØRKET" is written above the strings. Performance instructions include *esp.*, *r*, *ppp*, *xxl*, *ppp*, *tutti*, and *pp*. A "COPY BAR" is present between measures 29 and 30. The tempo is marked as ca 70.

triplets; staccato

Almost no sound of pitch; mostly sound of air.

34

35

36

37

38

39

40

41

Fl
 2
 Cl.
 Fg

Tr
 Cr

Keyb I
 Keyb II

vn
 vl
 vc
 1
 2
 3
 4
 vb
 divisi



Handwritten musical score for measures 42-50. The system includes staves for Cello (ci) and Double Bass (fg). The Cello part features a melodic line with dynamics *ppp cresc* and *pp*, and a section marked *quasi gliss.* with triplets. The Double Bass part has a rhythmic accompaniment with triplets.

Handwritten musical score for measures 42-50. The system includes staves for four Trombones (tp) and four Cornets (cr), all marked *con sordini*. The dynamics are *ppp cresc* and *pp*.

Handwritten musical score for measures 42-50. The system includes staves for Keyboard I (Keyb I) and Keyboard II (Keyb II). Both parts feature a rhythmic accompaniment with triplets and dynamics *pp*.

Handwritten musical score for measures 42-50. The system includes staves for Violin (vn), Violoncello (vc), and Viola (vb). The Violin part has circled measure numbers 29, 30, and 31. The Viola part has circled measure numbers 29, 30, and 31. The Violoncello part has circled measure numbers 29, 30, and 31. A large watermark "NB noter" and "This music is copyright protected" is overlaid on the page.

Handwritten musical score for measures 51-54. The system includes staves for Violin (vn), Violoncello (vc), and Viola (vb). The Violin part has circled measure numbers 51, 52, 53, and 54. The Violoncello part has circled measure numbers 51, 52, 53, and 54. The Viola part has circled measure numbers 51, 52, 53, and 54. The dynamics are *pp*. A large watermark "NB noter" and "This music is copyright protected" is overlaid on the page.

x) sul ponticello - quasi flautando [see footnote page 1]

5
4 ! = ca 70
55

56 - 7 -

57

58

59

60

Handwritten musical score for orchestra and piano. The score includes staves for Flute 1 & 2 (fl), Clarinet (cl), Bassoon (fg), Horns (tr), Corno (cr), Keyboard I & II (Keyb I, Keyb II), Violin (vl), Viola (vc), and Violoncello (vb). The music is in 5/4 time and features various dynamics such as *pp*, *p*, and *mf*. There are handwritten annotations like "3" and "b4. b2." above notes. A large watermark "NB noter" is visible across the lower part of the score.

5
4

3/4 registration seems to dark ; transpose 8va above.

vc ; triplets ; spiccato

61

62

63-8-

64

65

66

4
4

67

Handwritten musical score for orchestra and piano. The score includes staves for Flute (Fl.), Clarinet (Cl.), Bassoon (Fg.), Horns (Fr.), Trumpets (Tr.), Trombones (Tb.), Violins (Vn.), Violas (Vl.), Cellos (Vc.), and Double Basses (Vb.).

Key features of the score include:

- Flute (Fl.):** Features melodic lines with triplets and slurs.
- Clarinet (Cl.):** Similar melodic lines to the flute.
- Bassoon (Fg.):** Provides harmonic support with sustained notes.
- Horns (Fr.):** Includes dynamic markings like *pp* and *p*.
- Violins (Vn.):** Includes the instruction "divisi" and dynamic markings *mp* and *pp*.
- Violas (Vl.):** Includes circled measure numbers 55, 58, 59, 56, 55, 58.
- Cellos (Vc.):** Includes a "cresc" (crescendo) marking.
- Double Basses (Vb.):** Includes dynamic markings *pp* and *f*.

A large watermark "NBM noter" is visible across the lower portion of the score.

4
4

68

69

70

71

72

73

Handwritten musical score for measures 68-73. The score includes staves for strings (Violins I & II, Violas, Cellos/Double Basses), woodwinds (Flutes, Clarinets, Bassoons, Contrabassoon), brass (Trumpets, Trombones, Horns), and percussion (Timpani, Snare, Cymbals, etc.).

Key instructions for strings:

- Keyb. I: Reg: Dark strings sounding 8va below
- Keyb. II: Reg: Nasal sound sounding 8va below

Violin section: *divisi* (measures 71-73), *crec* (measures 68-70).

Dynamic markings: *f*, *mf*, *ff*, *dim*, *pp*.

Articulation: *acc*, *stacc*, *staccato*, *stacc.*

Tempo/Character: *mf*, *ff*, *dim*, *pp*.

74

75

76

77

78

79

80

81

82

Handwritten musical score for measures 74-82. This section features vocal lines for Keyb. I and Keyb. II, and a vocal line for the vocalists.

Vocal lines (Keyb. I and II):

- Measure 74: *dim* - - - - - *pp*
- Measure 75: *dim* - - - - - *pp*
- Measures 76-78: *pp*
- Measures 79-82: *pp*

Vocalist line:

- Measures 76-78: *pp*
- Measures 79-82: *pp*

Instrumental accompaniment (Violins, Violas, Cellos/Double Basses):

- Measures 74-75: *dim* - - - - - *pp*
- Measures 76-78: *pp*
- Measures 79-82: *pp*

Lyrics: "DEI BLÅ FOLKET"

Handwritten musical score for measures 83-87. The score includes staves for strings (Violins I & II, Violas, Cellos, Double Basses), woodwinds (Flutes, Clarinets, Bassoons, Saxophones), brass (Trumpets, Trombones, Euphonium, Tuba), and keyboard instruments (Piano, Organ). The string section is the primary focus, with detailed notation for dynamics (pp, mp, p, cresc., decresc.), articulation (accents, slurs), and performance techniques (triplets, spiccato). The double bass part includes a section marked '8va basso'.

spiccato triplets.

Handwritten musical notation for measures 88-91. The notation is on a single staff with a treble clef and a 4/4 time signature. It features a melodic line with various note values, including eighth and sixteenth notes, and rests. There are some handwritten annotations, such as '3' and 'L', possibly indicating fingerings or articulation. The staff is divided into four measures.

Empty musical staves for measures 88-91, including staves for Flute (Fl), Clarinet (Cl), and Cor Anglais (Cr).

Empty musical staves for measures 88-91, including staves for Korbass (Korb), Keyboard I (Keyb I), and Keyboard II (Keyb II).

Handwritten musical notation for measures 88-91 for string instruments. The notation is on four staves: Violin I (vi), Violin II (vl), Viola (vc), and Violoncello (vb). The notation includes rhythmic patterns, slurs, and dynamic markings. A large watermark 'NMB Proter' is overlaid on the notation.

Empty musical staves for measures 88-91, including staves for Violin I (vi), Violin II (vl), Viola (vc), and Violoncello (vb).

Handwritten musical notation for measures 92-95. The notation is on a single staff with a treble clef and a common time signature. It features a melodic line with various rhythmic values, including eighth and sixteenth notes, and rests. There are several triplet markings (indicated by a '3' above a bracket) and a large slur spanning across measures 93 and 94. The notes are mostly in the upper register of the staff.

Empty musical staves for measures 92-95, including staves for percussion (tp) and cymbals (cr).

Empty musical staves for measures 92-95, including staves for Keybo I and Keybo II.

Handwritten musical notation for measures 92-95 for string instruments. The notation is on a grand staff (violin I, violin II, viola, and cello). It includes rhythmic patterns, slurs, and dynamic markings such as *div a 3* and *exp*. A large watermark is present over the notation.

Empty musical staves for measures 92-95, including staves for double bass (vb).

Handwritten musical notation for measures 96-98, featuring a treble clef staff with a key signature of one sharp (F#) and a common time signature. The notation includes eighth notes, quarter notes, and triplet markings (3) over groups of notes.

Empty musical staves for various instruments, including Flute (Fl), Clarinet (Cl), Bassoon (Fg), Trumpet (Tp), Trombone (Tb), Horn (Cr), and Keyboard (Keyb). Each instrument has two staves.

col vn
 pp Registration: mellow strings with a bell-like attack - echo & reverb
 ad lib esp. volume.

Handwritten musical notation for Violin (vn), Viola (vl), and Violoncello (vc) parts. The notation includes various note values, rests, and dynamic markings such as *pp*, *mf*, and *div*. There are also triplet markings (3) and a marking 'a2 (3) (3)'. A watermark 'NB noter' and 'This music is copyright protected' is visible across the page.

Empty musical staves for the lower section of the score, including additional string parts and other instruments.

Handwritten musical score for a string quartet. The score is divided into four systems, each corresponding to a page number (99, 100, 101, 102) circled at the top. The instruments are Violin I (violin), Violin II (violin), Viola (vc), and Violoncello (vb). The key signature is D major (two sharps). The score includes various musical notations such as triplets, slurs, and dynamic markings like *div.*, *esp.*, and *f*. A large watermark 'NB noter' is overlaid on the score, along with the text 'This music is copyright protected'.

Handwritten musical score for measures 103-106. The score includes parts for Flute (fl), Clarinet (cl), Horn (Hr), Trumpet (Tp), Trombone (Tr), Cymbal (Cr), Keyboard I (Keyb. I), Keyboard II (Keyb. II), Violin I (vln), Violin II (vln), Viola (vcl), and Violoncello (vcl). The score contains various musical notations such as notes, rests, triplets, and dynamic markings like 'ppp', 'exp', 'dim', and 'morendo'. A large watermark 'NB noter' is visible across the middle of the page.

⌘ Reg: like a smith's beating on several anvils - "nissene" are heard working in a distance

Handwritten musical score for a symphony orchestra, measures 107-110. The score includes parts for Flute 1, Flute 2, Clarinet, Bassoon, Trumpet 1, Trumpet 2, Trombone 1, Trombone 2, Trombone 3, Keyboard I, Keyboard II, Solo Violin I, Violin I, Violin II, Violin III, Viola, Violoncello, and Double Bass. The music is in 3/4 time with a key signature of one sharp (F#). Measure 107 features a crescendo in the flute and clarinet parts. Measure 108 includes a 'morendo' marking in the clarinet and bassoon parts. Measure 109 shows a forte (f) dynamic in the violin I part. Measure 110 concludes with a 'tutti' marking in the violin I part. A large watermark 'NB noter' is overlaid on the score, along with the text 'This music is copyright protected'.

111

112

113

114

Handwritten musical notation for the first system, including a treble clef, a key signature of one sharp (F#), and a 4/4 time signature. The notation features various rhythmic patterns, including eighth and sixteenth notes, and rests. A circled measure number '111' is at the beginning, and another circled measure number '112' is further along. The notation is written on a single staff.

Empty musical staves for the second system, including a treble clef and a 4/4 time signature.

Empty musical staves for the third system, including a treble clef and a 4/4 time signature.

Handwritten musical notation for the fourth system, including a treble clef, a key signature of one flat (Bb), and a 3/4 time signature. The notation includes various instruments: sdo, vn I, tubi, vn II, vl, vc, and vb. The notation features various rhythmic patterns, including eighth and sixteenth notes, and rests. A circled measure number '113' is at the beginning, and another circled measure number '114' is further along. The notation is written on multiple staves. Annotations include "quasi sul pont" and "p cresc" in the vn II part, and "explosive Bartok-p.33." and "fftt" in the vb part.



Empty musical staves for the fifth system, including a treble clef and a 4/4 time signature.

Handwritten musical score for orchestra and solo instruments. The score is divided into measures 115, 116, 117, and 118. The instruments included are:

- Flutes (fl):** Measures 115-118, marked *f*. Includes triplets and slurs.
- Clarinet (cl):** Measures 115-118, marked *mf* and *esp*. Includes slurs and accents.
- Violins I (vn I):** Measures 115-118, marked *mf*. Includes slurs and accents.
- Violins II (vn II):** Measures 115-118, marked *mf*. Includes slurs and accents.
- Viola (vl):** Measures 115-118, marked *mf*. Includes slurs and accents.
- Violoncello (vc):** Measures 115-118, marked *mf*. Includes slurs and accents.
- Double Bass (vb):** Measures 115-118, marked *mf*. Includes slurs and accents.
- Keyboards (Keyb. I & II):** Empty staves.
- Other:** Empty staves for strings II, percussion, and harp.

The score features complex rhythmic patterns, including triplets and slurs, and dynamic markings such as *f*, *mf*, and *esp*. A large watermark "NB PROTECTOR" is visible across the center of the page.

119

120

121

122

123

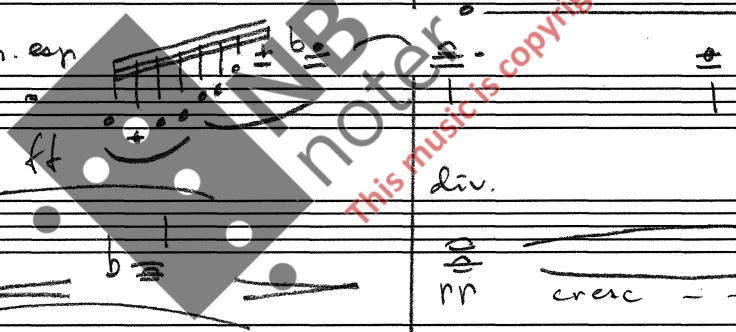
Handwritten musical score for the first system, measures 119-123. It includes staves for Flute (Fl), Clarinet (Cl), Bassoon (Bs), and Cello/Double Bass (Cs/Ds). The Flute part features complex rhythmic patterns with triplets and slurs. The Clarinet part has a 'col' (col legno) instruction. The Bassoon part includes a triplet. The Cello/Double Bass part has a triplet and a dynamic marking of *mf*.

Handwritten musical score for the second system, measures 119-123. It includes staves for Trumpet (Tp), Trombone (Tb), and Horn (Cr). The Horn part has a dynamic marking of *mp* and a 'cresc.' (crescendo) instruction. The Trombone part has a dynamic marking of *mp* and a 'cresc' instruction. The Trumpet part has a dynamic marking of *mp* and a 'cresc' instruction.

Handwritten musical score for the third system, measures 119-123. It includes staves for Keyboard I (Keyb I) and Keyboard II (Keyb II). The Keyboard I part has a dynamic marking of *pp* and a 'cresc' instruction, with the handwritten note "Nissehammering" above it. The Keyboard II part has a dynamic marking of *pp* and a 'cresc' instruction.

Handwritten musical score for the fourth system, measures 119-123. It includes staves for Violin I (vn I) and Violin II (vn II). The Violin I part has a dynamic marking of *ff* and a 'div.' (divisi) instruction. The Violin II part has a dynamic marking of *mp* and a 'cresc' instruction.

Handwritten musical score for the fifth system, measures 119-123. It includes staves for Viola (vl), Violoncello (vc), and Double Bass (vb). The Viola part has a dynamic marking of *ff* and a 'div.' instruction. The Violoncello part has a dynamic marking of *mp* and a 'cresc' instruction. The Double Bass part has a dynamic marking of *pp* and a 'cresc' instruction, with the handwritten note 'arco' above it. There is also a handwritten note '(p:33)' near the beginning of the Double Bass part.



124

125

126

127

Handwritten musical score for orchestra and solo instruments. The score is divided into four measures corresponding to measures 124, 125, 126, and 127. The instruments and parts include:

- Flute (fl):** Part 1 and Part 2. Measure 124 has a dynamic marking of *col ff*.
- Clarinet (cl):** Part 1.
- Bassoon (fg):** Part 1 and Part 2.
- Trumpet (tr):** Part 1 and Part 2.
- Cornet (cr):** Part 1 and Part 2.
- Keyboards (Keyb I, Keyb II):** Part 1 and Part 2.
- Solo Violin (sdo vn I):** Part 1, with a dynamic marking of *fff* and a performance instruction *m. cap*.
- Violin I (vn I):** Part 1, with a dynamic marking of *ff*.
- Violin II (vn II):** Part 1, with a dynamic marking of *ff*.
- Viola (vl):** Part 1, with a dynamic marking of *ff*.
- Solo Violoncello (sdo vc):** Part 1, with a dynamic marking of *fff*.
- Violoncello (vc):** Part 1, with a dynamic marking of *ff*.
- Double Bass (vb):** Part 1, with a dynamic marking of *fff*.

The score features complex rhythmic patterns, including sixteenth and thirty-second notes, and rests. Measure 127 includes a *dim* (diminuendo) instruction. A large watermark "NB noter" is visible across the center of the page, with the text "this music is copyright protected" written diagonally across it.

128

129

130

131

132

Handwritten musical score for multiple instruments. The score is divided into systems. The first system includes:

- Flute (fl):** Treble clef, dynamic markings *mp* and *dim*.
- Clarinet in B-flat (c.i.):** Treble clef, dynamic markings *p* and *dim*.
- Trumpet (tr):** Treble clef, dynamic marking *pppp cresc*.
- Drum (dr):** Two staves, empty.
- Keyboard I (Keyb. I):** Empty.
- Keyboard II (Keyb. II):** Empty.

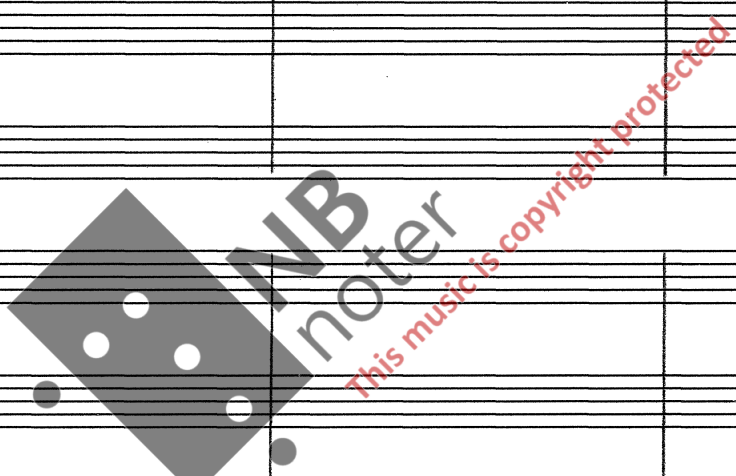
The second system includes:

- Violin I (vn I):** Treble clef, dynamic marking *mp*.
- Violin II (vn II):** Treble clef, dynamic marking *mp*.
- Viola (vl):** Bass clef, dynamic marking *mp*.
- Solo (solo):** Empty.
- Violoncello (vc):** Bass clef, dynamic marking *mp*.
- Tutti (tutti):** Empty.
- Violabass (vb):** Bass clef, dynamic marking *mp*.

There is a large watermark in the center of the page that reads "NB noter" and "This music is copyright protected".

Handwritten musical score for measures 133-137. The score includes staves for Flute (Fl), Clarinet (Cl), Bassoon (Bn), Trumpet (Tr), Trombone (Tbn), and Keyboard (Keyb. I & II). The Flute part features a *morendo* marking and a triplet. The Bassoon part features a *cresc.* marking and a triplet. The Keyboard parts are currently blank.

Handwritten musical score for measures 133-137, continuing from the previous section. The score includes staves for Violin I (vn I), Violin II (vn II), Viola (vc), and Violoncello (vb). The Violin I and II parts feature a *cresc.* marking and a *f* dynamic. The Viola and Violoncello parts feature a *mf* marking and a triplet. The score includes various rhythmic patterns and dynamics.



Empty musical staves for measures 133-137, providing space for further notation.

Handwritten musical score for measures 138-142. The score includes staves for Flute (fl), Clarinet in C (cl), Bassoon (fg), Trumpet (tr), Horns (cr), Keyboard I (Keyb. I), Keyboard II (Keyb. II), Violin I (va I), Violin II (va II), Viola (vl), Violoncello (vc), and Double Bass (vb). The music is in G major and 3/4 time. The flute part features a melodic line with trills and triplets. The strings play a rhythmic accompaniment of eighth notes. Dynamics include *ff* and *Reg: brass*. A large watermark 'NB noter' is visible across the score.

x) Omit D# for doublebasses.

Handwritten musical score for a symphony orchestra, measures 143-147. The score includes staves for strings (Violins I & II, Violas, Cellos, Double Basses), woodwinds (Flutes, Clarinets), brass (Trumpets, Trombones), and keyboard instruments (Pianos, Harpsichord). The music features complex rhythmic patterns, including triplets and sixteenth-note runs. Performance markings include dynamics such as *ff*, *mf*, *ppp*, and *mp*, as well as articulation like *staccato* and *simile ad libitum*. A section titled "Nissehammering" is marked with *ppp*. A large watermark "MIB noter" is visible across the score, along with the text "This music is copyright protected".

Empty musical staves for the continuation of the score, including staves for strings, woodwinds, brass, and keyboard instruments.

Handwritten musical score for multiple instruments including strings, woodwinds, brass, and keyboard. The score is divided into systems, with measures 148-152 visible. It includes dynamic markings such as *p.a.p. dim*, *cresc*, *pp*, *f*, and *mf*. Performance instructions like *tr* (trill) and *funny* are present. A large watermark "MIDI NOTER" is overlaid on the score.

System 1 (Measures 148-150):

- Violins I:** *p.a.p. dim* (pizzicato, arpeggiated, decrescendo). Includes a triplet in measure 150.
- Violins II:** *p.a.p. dim* (pizzicato, arpeggiated, decrescendo).
- Violas:** *p.a.p. dim* (pizzicato, arpeggiated, decrescendo).
- Violoncellos/Double Basses:** *p.a.p. dim* (pizzicato, arpeggiated, decrescendo).
- Keyboards:** *p.a.p. cresc* (pizzicato, arpeggiated, crescendo).

System 2 (Measures 151-152):

- Violins I:** *f* (forte) with a trill (*tr*) in measure 151.
- Violins II:** *mf* (mezzo-forte).
- Violas:** *mf* (mezzo-forte).
- Violoncellos/Double Basses:** *mf* (mezzo-forte).
- Keyboards:** *pp* (pianissimo).

System 3 (Measures 153-155):

- Violins I:** *f* (forte) with a trill (*tr*) and the instruction *funny*.
- Violins II:** *p.a.p. dim* (pizzicato, arpeggiated, decrescendo).
- Violas:** *col vn I tutti* (colla parte with Violins I, tutti).
- Violoncellos/Double Basses:** *f* (forte).
- Keyboards:** *p.a.p. dim* (pizzicato, arpeggiated, decrescendo).

System 4 (Measures 156-158):

- Violins I:** *f* (forte) with a trill (*tr*) and the instruction *mean*.
- Violins II:** *p.a.p. dim* (pizzicato, arpeggiated, decrescendo).
- Violas:** *col vn I tutti* (colla parte with Violins I, tutti).
- Violoncellos/Double Basses:** *f* (forte).
- Keyboards:** *p.a.p. dim* (pizzicato, arpeggiated, decrescendo).

Keyb. I *simile*
ad lib

Keyb. II

fl

ci.

fp

cr

Keyb. I *p.p. dim* - - - - - *Lib. ben simile*
morendo - - - - - *ad lib*

Keyb. II *morendo*

vn I

vn II

vt

vc

vb

164

165

166

167

168

169

170

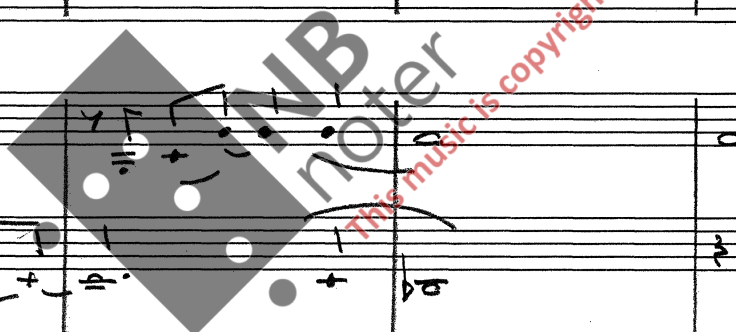
Handwritten musical notation for the first system, including a treble clef and various notes and rests.

Empty musical staves for the second system, including a treble clef and a common time signature.

Handwritten musical notation for the third system, including a treble clef and notes with a *ppp* dynamic marking.

Handwritten musical notation for the fourth system, including a treble clef and notes with a *niente* marking.

Handwritten musical notation for the fifth system, including staves for violin I, violin II, viola, and cello, with various markings like *div.* and *pizz*.



Empty musical staves for the sixth system, including a treble clef and a common time signature.

171

172

173

174

175

176

177

Handwritten musical score for measures 171-177. The first staff shows a melodic line in 3/4 time with notes and rests. The rest of the system contains empty staves for other instruments.

"BERGTATT"

♩ = 50

Empty musical staves for measures 171-177, including staves for strings (cr) and woodwinds (Kajob I).

Empty musical staves for measures 171-177, including staves for woodwinds (Kajob II).

Handwritten musical score for measures 171-177. The Keyboard II staff contains a handwritten instruction: "Req: a slight 'tinkle' of bell attack and very mellow strings X)". The staff shows some notes and rests.

Handwritten musical score for measures 171-177. The string section (vn I, vn II, vl, vc, vb) has detailed notation. The vc staff includes the instruction "div a 3". The vb staff has dynamic markings "pp" and "p".

X) Keyboard II should only enhance the strings and must be in broad stereo; reverb and echo must also be in stereo.

178

179

180

181

182

183

bass flute (fl.b.) [played by 1st or 2nd flute player] *exp* *ad lib dynamics*

Keyb. I Reg: an "eerie" sound of ghosts *p*

Keyb. II

vn I

vn II

vt

vc

vb

⚠ Bassflute should be amplified and/or stand in front of orchestra.

184

185

186

187

188

189

fl.b.

Keyb. I

Keyb. II

vn I

vn II

vt

vc

vb

190

191

192

- 30 -

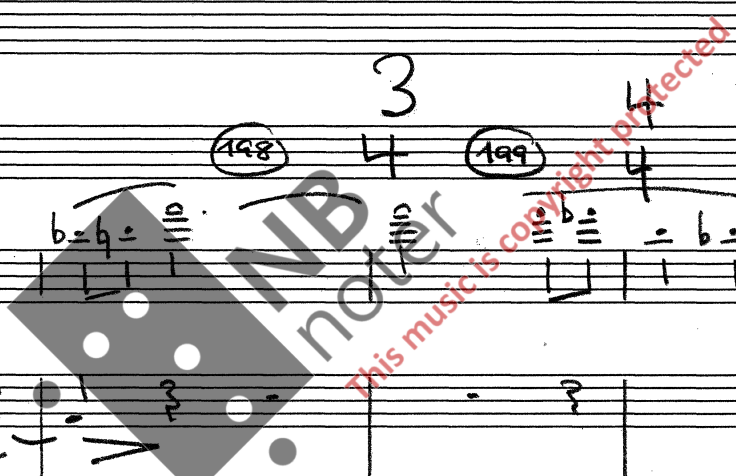
193

194

195

Handwritten musical score for measures 190-195. The score includes staves for Flute (Fl.), Keyboard I (Keyb. I), Keyboard II (Keyb. II), Violin I (vn I), Violin II (vn II), Viola (vl), Violoncello (vc), and Double Bass (vb). Measure 190 features a complex melodic line in the flute with many accidentals. Measures 191-192 show a continuation of this melodic line. Measure 193 has a dynamic marking of *p*. Measure 194 has a dynamic marking of *pp*. Measure 195 has a dynamic marking of *pp*. There are also some handwritten notes and markings above the flute staff, including a circled '3'.

Handwritten musical score for measures 196-202. The score includes staves for Flute (Fl.), Keyboard I (Keyb. I), Keyboard II (Keyb. II), Violin I (vn I), Violin II (vn II), Viola (vl), Violoncello (vc), and Double Bass (vb). Measure 196 has a dynamic marking of *pp*. Measure 197 has a dynamic marking of *p*. Measure 198 has a dynamic marking of *p*. Measure 199 has a dynamic marking of *pp*. Measure 200 has a dynamic marking of *pp*. Measure 201 has a dynamic marking of *pp*. Measure 202 has a dynamic marking of *pp*. There are also some handwritten notes and markings above the flute staff, including a circled '3' and a circled '4'.



203

204

205

206

207

208

Handwritten musical score for measures 203-208. The score includes a vocal line and piano accompaniment for Keyboard I, Keyboard II, Violin I, Violin II, Viola, Violoncello, and Double Bass. The key signature is B-flat major. Measure 203 features a vocal line with a triplet of eighth notes. Measure 204 has a vocal line with a triplet of eighth notes and a piano accompaniment with a triplet of eighth notes. Measure 205 has a vocal line with a triplet of eighth notes. Measure 206 has a vocal line with a triplet of eighth notes. Measure 207 has a vocal line with a triplet of eighth notes and a piano accompaniment with a triplet of eighth notes. Measure 208 has a vocal line with a triplet of eighth notes and a piano accompaniment with a triplet of eighth notes.

209

210

211

212

213

214

Handwritten musical score for measures 209-214. The score includes a vocal line and piano accompaniment for Keyboard I, Keyboard II, Violin I, Violin II, Viola, Violoncello, and Double Bass. The key signature is B-flat major. Measure 209 has a vocal line with a triplet of eighth notes. Measure 210 has a vocal line with a triplet of eighth notes. Measure 211 has a vocal line with a triplet of eighth notes. Measure 212 has a vocal line with a triplet of eighth notes. Measure 213 has a vocal line with a triplet of eighth notes. Measure 214 has a vocal line with a triplet of eighth notes. A large watermark 'NMI noter' is visible across the score.

215

216

217

218

219

220

Handwritten musical score for measures 215-220. The system includes a vocal line (top) and a piano accompaniment (bottom). The piano part features a complex texture with multiple voices (VL, VC) and various articulations like accents and slurs. A fermata is present over measure 219.

221

222

223

224

225

spiccato

Handwritten musical score for measures 221-225. This system includes a keyboard part (Keyb. I+II) and a piano accompaniment. The piano part has a 'cresc' marking and 'mf' dynamics. The keyboard part features sustained chords. A registration change is noted at the bottom: 'Registration: "orchestral" spiccato'.

226

227

228

229

230

Handwritten musical score for measures 226-230. The system includes a keyboard part (Keyb. I+II) and a piano accompaniment. The piano part has a dense texture with many notes and some accidentals. A large watermark 'ND Moter' is visible across the page.

231

232

233

234

235

236

237

Handwritten musical score for measures 231-237. The system includes a keyboard part (Keyb. I+II) and a piano accompaniment. The piano part has a sparse texture with many rests and some notes. The keyboard part has sustained chords.

Musical score system 1 (measures 238-244). Includes vocal line (m. esp), piano (mp), and string parts (vl, vc).

Musical score system 2 (measures 245-250). Includes vocal line and piano accompaniment.

Musical score system 3 (measures 251-257). Includes vocal line with dynamics (morendo, dim, pp, cresc, ff) and piano accompaniment.

Musical score system 4 (measures 258-265). Includes piano accompaniment with dynamics (cresc, f, mp, ff, mf).

Musical score system 5 (measures 266-272). Includes piano accompaniment with dynamics (ff, cresc, ffff).

(273)

10"

(274)

6"

(275)

4"

fl
ppp

cl
ppp

bs
ppp

cr
ppp

cl
ppp

bs
ppp

cr
ppp

Keyb. I

Keyb. II

vn I
ppp

vn II
ppp

vl
ppp

vc
ppp

vb
ppp

TUTTI: Fast chromatic runs [everybody must hurry underground before the sun comes up] - the lines indicate the range.

2 ♩ = 60 4

"Morgenstemning"

(276)

(277)

(278)

(279)

(280)

(281)

(282)

Handwritten musical score for strings (violin I, violin II, viola, cello, double bass) and woodwinds (flute, oboe, clarinet). The score includes notes, rests, and dynamic markings such as *p* and *mf*. The first system shows the beginning of the piece with a tempo marking of 2 ♩ = 60.

Empty musical staves for woodwinds (flute, oboe, clarinet) and strings (violin I, violin II, viola, cello, double bass).

Empty musical staves for keyboard instruments (Keyb. I and Keyb. II).

ARCEL: Sustained tones softer than lines.

Handwritten musical score for woodwinds (flute I, flute II, clarinet) and strings (violin I, violin II, viola, cello, double bass). The score includes notes, rests, and dynamic markings such as *p* and *arco*. A watermark "NMI Noter" is visible over the score.

Empty musical staves for woodwinds (flute I, flute II, clarinet) and strings (violin I, violin II, viola, cello, double bass).

283

284

285

286

287

288

Handwritten musical score for measures 283-288. The top system includes a grand staff with two staves (1 and 2) and a cello/bass line. The first staff has a treble clef and a 3/4 time signature. The second staff has a bass clef. The cello/bass line is labeled 'c.b.'. The music features various notes, rests, and dynamic markings like 'f' and 'r'.

Handwritten musical score for measures 283-288. The middle system includes a grand staff with two staves (1 and 2) and a piano line. The first staff has a treble clef. The second staff has a bass clef. The piano line is labeled 'p'. The music features various notes, rests, and dynamic markings like 'pp'.

Handwritten musical score for measures 283-288. The bottom system includes two empty grand staves labeled 'Keyb I' and 'Keyb II'.

Handwritten musical score for measures 283-288. The bottom system includes a grand staff with two staves (1 and 2) and a double bass line. The first staff has a treble clef. The second staff has a bass clef. The double bass line is labeled 'db'. The music features various notes, rests, and dynamic markings like 'div', 'arco', and 'p33'.



Handwritten musical score for measures 283-288. The bottom system includes a grand staff with two staves (1 and 2) and a double bass line. The first staff has a treble clef. The second staff has a bass clef. The double bass line is labeled 'db'. The music features various notes, rests, and dynamic markings like 'p33'.

289

290

291

292

293

294

Handwritten musical notation for measures 289-294. The notation includes a treble clef staff with notes and rests, and a grand staff (treble and bass clefs) with notes and rests. The notes are mostly whole and half notes with various accidentals.

Handwritten musical notation for measures 289-294. The notation includes a treble clef staff with notes and rests, and a grand staff (treble and bass clefs) with notes and rests. The notes are mostly whole and half notes with various accidentals.

Handwritten musical notation for measures 289-294. The notation includes a treble clef staff with notes and rests, and a grand staff (treble and bass clefs) with notes and rests. The notes are mostly whole and half notes with various accidentals.

Registration: "whispering trolls"
 attack like breathing
 and full release (15-20")
 xj

Registration: mellow strings/choir
 without attack (≡)
 and full release (15-20")
 xj

Handwritten musical notation for measures 289-294. The notation includes a treble clef staff with notes and rests, and a grand staff (treble and bass clefs) with notes and rests. The notes are mostly whole and half notes with various accidentals.

gliss

arco

xj release ; sustain

295

296

297

298

299

300

Handwritten musical notation for the first system, including treble clef, notes, and accidentals.

Empty musical staves for the second system.

Handwritten musical notation for the third system, including two keyboard parts labeled 'Keyb. I' and 'Keyb. II'.

Handwritten musical notation for the fourth system, including parts for violin I (vn I), violin II (vn II), viola (vl), and cello/vibraphone (vb). Includes a large watermark 'NB noter' and 'this music is copyright protected'.

Empty musical staves for the fifth system.

308

309

310

311

312

313

314

40 -

Handwritten musical notation for the first system, including staves for Flute (Fl), Clarinet (Cl), and Bassoon (Fg). The notation includes notes, rests, and dynamic markings.

Empty musical staves for Horns (Hr) and Cor Anglais (Cr).

Handwritten musical notation for two Keyboard (Keyb) instruments, showing notes and rests.

Handwritten musical notation for string instruments: Violin I (vn I), Violin II (vn II), Viola (vl), Violoncello (vc), and Double Bass (vb). The notation includes notes, rests, and dynamic markings.



Empty musical staves for the lower section of the score.

315

316

317

318

319

320

321

322

Handwritten musical score for the first system, measures 315-322. The system includes a grand staff with treble and bass clefs, and a lower staff with a bass clef. The notation features various notes, rests, and slurs.

Handwritten musical score for the second system, measures 315-322. This system includes a grand staff with treble and bass clefs, and a lower staff with a bass clef. The notation continues with notes, rests, and slurs.

Handwritten musical score for the third system, measures 315-322. This system includes a grand staff with treble and bass clefs. The notation includes notes, rests, and slurs.

Handwritten musical score for the fourth system, measures 315-322. This system includes a grand staff with treble and bass clefs. The notation includes notes, rests, and slurs. Annotations include "normal release" and "normal attack".

Handwritten musical score for the fifth system, measures 315-322. This system includes a grand staff with treble and bass clefs, and a lower staff with a bass clef. The notation includes notes, rests, and slurs.



Empty musical staves at the bottom of the page, consisting of multiple systems of five-line staves.

Handwritten musical score for measures 323-329. The score includes parts for Flute 1, Flute 2, Clarinet, Bassoon, Trumpet, Trombone, Keyboard I, Keyboard II, Violin I, Violin II, Viola, and Cello/Double Bass. The music is in 2/4 time and features various dynamics such as *mp*, *m. exp*, and *mf*. Performance instructions include *Rit.* and *A TEMPO*. A large watermark for "NB noter" is present across the score, with the text "This music is copyright protected" written diagonally.

Empty musical staves for measures 330-336, consisting of ten blank systems of five-line staves.

330

331

332

333

334

335

fl

2

Cl.

mp

tr

2

Cr

mp

Kgob I

Kgob II

Reg: mellow cello/
contrabasso

va I

va II

vt

vc

arco

pizz



Empty musical staves for additional instruments or parts.

336

337

338

339

340

341

Fl I
Fl II
Cl
Bsn
Ob
Hr I
Hr II
Trp I
Trp II
Tbn I
Tbn II
Keyb I
Keyb II
vn I
vn II
vt
vc/vb

p
arco
gliss
f

DURATION : ca 22 minutes.

342

Trasfjord

8/9 - 1987

Leif Rypdal

mf *mp* *p*