

" ARKTIK "

Terje Rypdal 1988.

[for electric guitar / alto flute - trumpet -  
synthesizer - contrabass - percussion]

[in C]

①

" Desember morgen "

②

fl.a.

tr

Synth (variere langsomt)

vb flageoletter ad lib

perc.

③

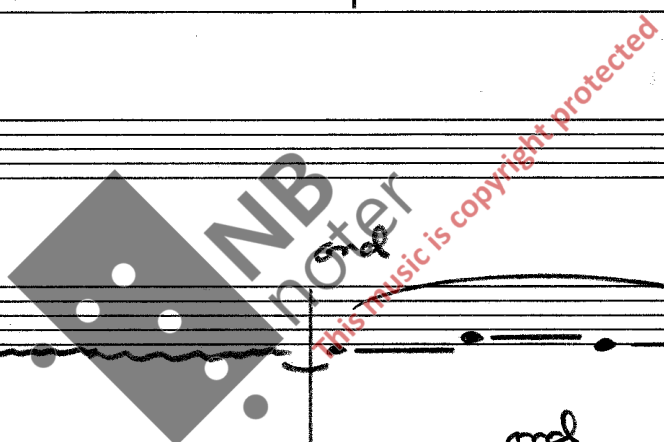
④

fl.a. molto vibrato

tr molto vibrato

Synth ond

perc. Ad lib "smålyder"



5

6

7

fl.a

tr

Synth  
+ vb  
+ perc

continue

8

9

10

fl.a

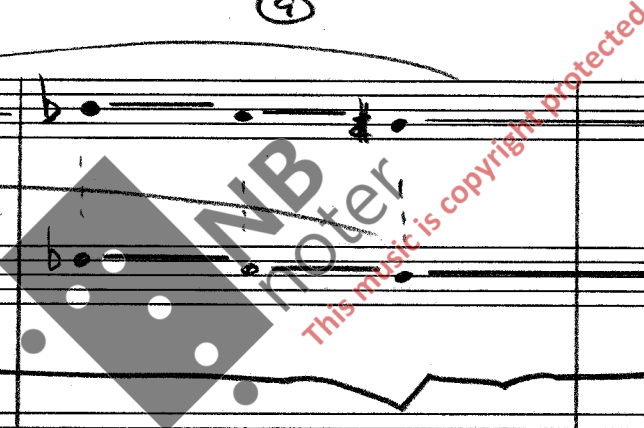
tr

Synth

vb

perc.

swatyder



11

12

Handwritten musical score for measures 11 and 12. The score includes staves for Flute (Fl.), Trumpet (Tr.), Trombone (Tb.), Saxophone (S), Violoncello (vb), and Percussion (perc.).

- Flute (Fl.):** Measure 11 has a whole note G4. Measure 12 has a whole note A4.
- Trumpet (Tr.):** Measure 11 has a whole note G4. Measure 12 has a whole note A4.
- Trombone (Tb.):** Handwritten waveform.
- Saxophone (S):** Measure 11 has a whole note E3 with a 9:4 ratio and a 4 above it. Measure 12 has a whole note A2 with a 9 above it. Measure 13 has a whole note F3 with a 3 below it.
- Violoncello (vb):** Measure 11 has a triplet of eighth notes (G3, A3, B3) with a 11:3:3 ratio above. Measure 12 has a whole note G3 with the instruction "arco" above it.
- Percussion (perc.):** Empty staff.

13

14

15

Handwritten musical score for measures 13, 14, and 15. The score includes staves for Flute (Fl.), Trumpet (Tr.), Trombone (Tb.), Saxophone (S), Violoncello (vb), and Percussion (perc.).

- Flute (Fl.):** Measure 13 has a whole note G4. Measure 14 has a whole note A4. Measure 15 has a whole note A4 with "m. vibr." above it.
- Trumpet (Tr.):** Measure 13 has a whole note G4. Measure 14 has a whole note A4. Measure 15 has a whole note A4 with "m. vibr." above it.
- Trombone (Tb.):** Handwritten waveform.
- Saxophone (S):** Measure 13 has a whole note F3 with a 9:4 ratio and a 3 below it. Measure 14 has a whole note E3 with a 9:4 ratio and a 4 above it, and a circled 4 above it. Measure 15 has a whole note D3 with the instruction "Dus" above it. The instruction "fade" with an arrow is written across measures 14 and 15.
- Violoncello (vb):** Measure 13 has a triplet of eighth notes (G3, A3, B3) with a 11:3:3 ratio above. Measure 14 has a whole note G3 with the instruction "arco, esp" above it. Measure 15 has a whole note G3 with the instruction "fade" and an arrow above it.
- Percussion (perc.):** Empty staff. The instruction "fade" with an arrow is written below the staff across measures 14 and 15.



2

"Enhjørningen - Hvalen"

fr  $\rightarrow$  AD LIB SOLO.

3

Veldig Solote

"Isfjell"

1

2

3

d.g.  $\text{tr}$  Harmon

T

S (r) Reg: strings

L

vb arco

d.g.

tr

T

S

L

vb

4 5 (r) 6 7

fiss pizz 33

8

9

10

Handwritten musical score for measures 8, 9, and 10. The score includes staves for Flute (d.g.), Clarinet (cl), Trumpet (T), Trombone (S), Bassoon (L), and Double Bass (vb). Measure 8 shows rhythmic patterns with notes and rests. Measure 9 has a slur over notes. Measure 10 is marked 'ad lib' and 'C diatonic'.

Denne "talten" blir en lang kollektiv improvisering (ca 5 min?)

Tutti ad lib

C diatonic

Tette klanger

Stadig uoppløste ledet over

bells etc.



4

"Nordlys"

Terje solo direkte ut fra "Isfjell"

5

"Storm"

a) Percussion Intro

b) + vb

c) + tr (Storm P. ?)

d) + el. guit

e) + synth ; både "vinder" og linjer  
(STORE SOUNDS)

f) CUE BARE GRAN CASSA + SYNTH  
ff

g) + el. guit slide gitar

h) fade GRAN CASSA solo.

5 B

Palle underholder publikum med fortellinger om sin dirigentkarriere (bl.a. Wiener Symfoniker osv.)

NB: 5 B may be omitted.

6

"Space-Connection / Goodbye Ozon"

arco

Mix: Fra forskjellige høytalere som stadig skifter.

ad lib flagedletz

Dal. f.  
ad ⊕





4  
4

① ⑦ "Summer Song" ("Ding Dong")

d.g.

Synth

vb

+ percussion ad lib og Palle synth.

d.g.

Synth

vb

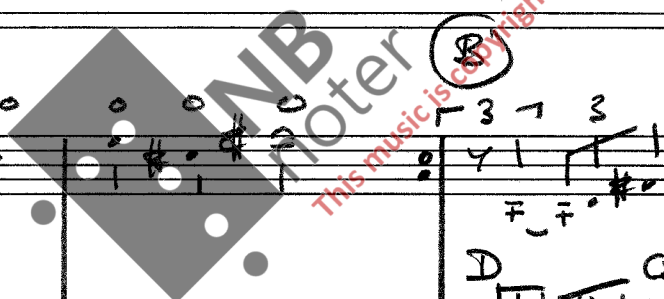
simile bass

d.g.

Synth

vb

Rep ad lib  
/A-A-B/  
Fade



8

" HØST "

Alle solo

→ kuitring som nr. 1.

9

REPRISE " DESEMBERMORGEN "

Variant : GRAN CASSA og store utbrudd i slagverk  
helst med masse klang over P.A.

10

" SPEIL "

som Coda

Kjerne

Rep Ad lib

- a) vb solo
- b) tr solo
- c) el.g. solo

fade

**BND**