

Dagfinn Rosnes:

# Prélude et Méditation

pour grand orgue

Écrit en 2000 pour Christer Løvold



*all rights music is copyright protected*

Grâce à “Det Norske Komponistfond”, cet œuvre  
à été réalisé

Hand 1. Prelude

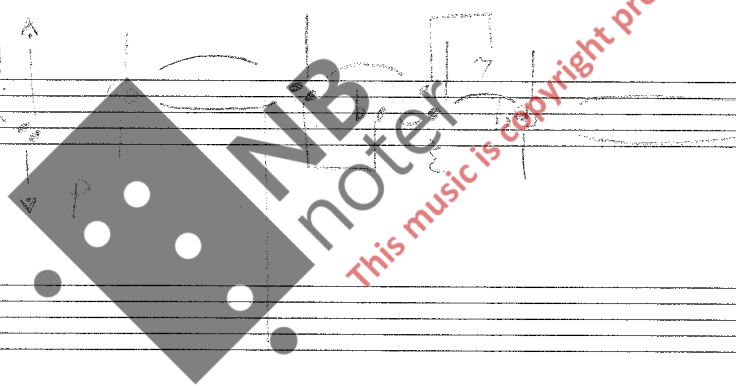
♩ = ca. 40

Man.

Handwritten musical notation for the Man. part, consisting of two staves (treble and bass clef). The notation includes notes, rests, and dynamic markings such as *pp* and *pp*. There are also some handwritten annotations like *pp* and *pp* near the beginning of the piece.

Ped.

Handwritten musical notation for the Ped. part, consisting of a single bass clef staff. The notation includes notes and rests, with a dynamic marking of *mp* at the end.



Handwritten musical score for the first system, measures 5-8. The score is written on three staves: Treble, Bass, and a lower Bass staff. Measure 5 is marked with a '5' above the staff. The music features a 7/8 time signature and includes various annotations such as 'H.W.', 'S.W.', 'PP', and 'm/'. Triplet markings are present over several notes in both the upper and lower staves.

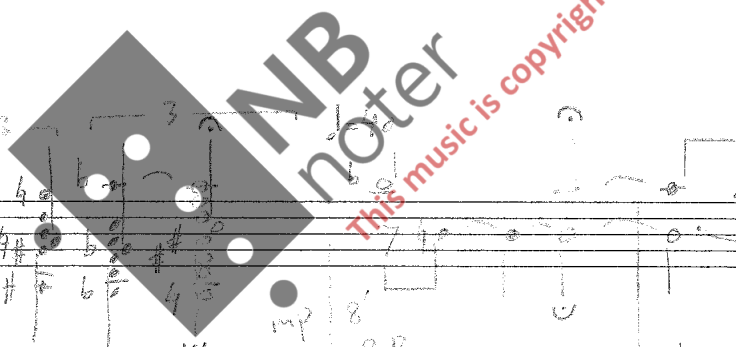
Handwritten musical score for the second system, measures 9-12. The score is written on three staves: Treble, Bass, and a lower Bass staff. Measure 9 is marked with a '9' and a tempo marking of  $\text{♩} = 60$ . The music includes annotations such as 'R.P. p' and 'p'. Triplet markings are present in the upper staff. A large watermark is overlaid on the center of the page, reading 'NB noter' and 'This music is copyright protected'.

14  $\text{♩} = 60$

*H.V.* *f*

*P.H.V.* *b'*

3 3



19 3

*mp* *8'* *R.P.*

*mp*

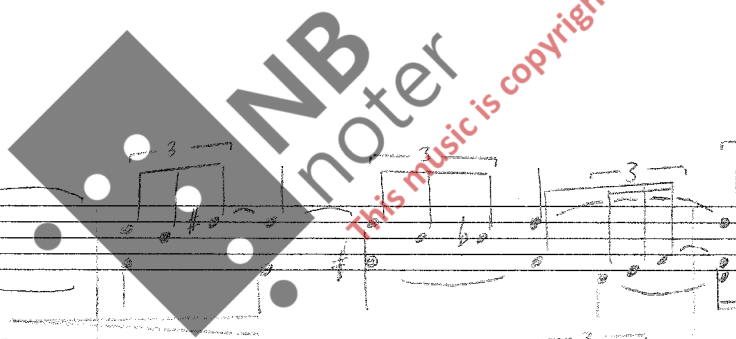
3 3

24

Handwritten musical score for measures 24-27. The score is written on three staves: a grand staff (treble and bass clefs) and a separate bass clef staff. The music features complex rhythmic patterns, including triplets and sixteenth notes. Dynamic markings include *p* (piano), *pp* (pianissimo), and *ppp* (pianississimo). A tempo marking of  $\text{♩} = 50$  is present. The notation includes various accidentals and articulation marks.

20

Handwritten musical score for measures 20-23. The score is written on three staves: a grand staff (treble and bass clefs) and a separate bass clef staff. The music features complex rhythmic patterns, including triplets and sixteenth notes. Dynamic markings include *p* (piano). The notation includes various accidentals and articulation marks.



33

SW 4'

PP

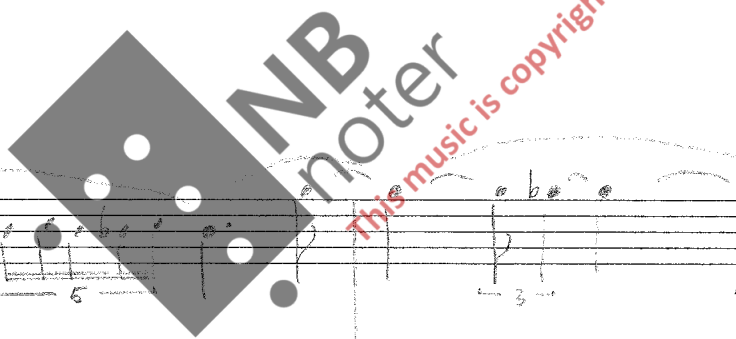
R.P. 8'

4'

PP

37

PP

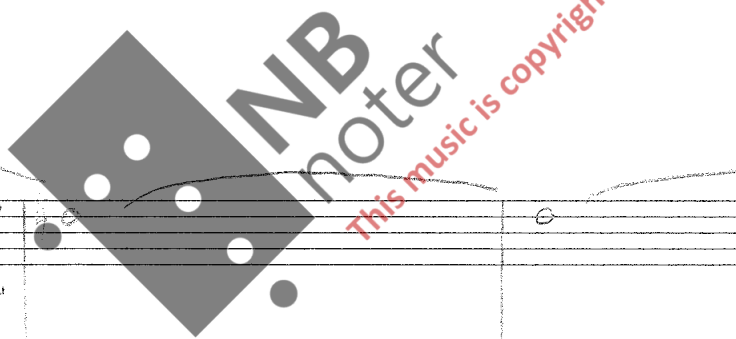


41

Handwritten musical score for measures 41-44. The score is written on three staves: two treble clefs and one bass clef. The first two staves are grouped by a brace on the left. The music features various note values, including eighth and sixteenth notes, and rests. Fingering numbers (1-5) are present under several notes. A large watermark is overlaid on the score.

45

Handwritten musical score for measures 45-48. The score is written on three staves: two treble clefs and one bass clef. The first two staves are grouped by a brace on the left. The music continues with various note values and rests. Fingering numbers (1-5) are present. A large watermark is overlaid on the score.



♩ = 60

Violin  
Violoncelle

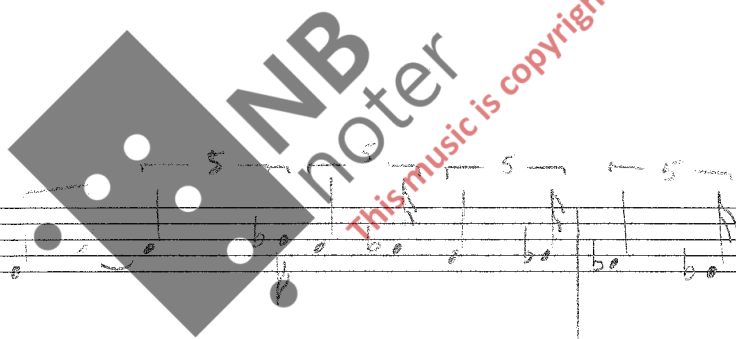
I

SW  
Vox celeste  
Viola d'amore

ppp

ppp

ppp





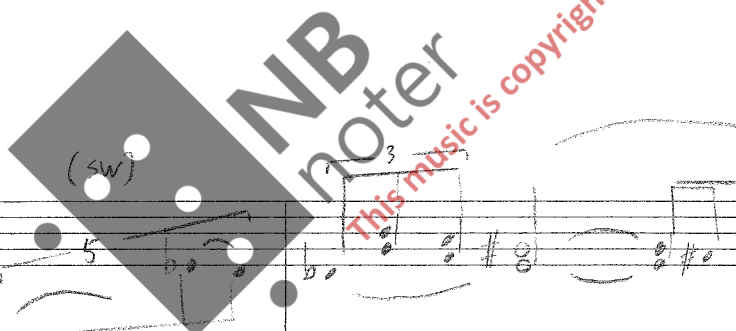
8

Gedächtnis  
Prüfung 4  
RP

mp

f

11



(sw)

Flute 6 mixture

mp

15

Handwritten musical score for measures 15-17. The top staff (treble clef) features a melodic line with triplets and quintuplets. The middle and bottom staves (bass clefs) provide accompaniment with chords and single notes. A large watermark is overlaid on the right side of the page.

18

Handwritten musical score for measures 18-20. The top staff (treble clef) features a melodic line with quintuplets. The middle and bottom staves (bass clefs) provide accompaniment with chords and single notes. A large watermark is overlaid on the right side of the page.

**NB**  
noter  
This music is copyright protected

21

Handwritten musical score for measures 21-23. The score is written on three staves: Treble Clef (top), Bass Clef (middle), and Bass Clef (bottom). The top two staves are grouped by a brace on the left. The music features complex fingering with many '5' markings and slurs. The bottom staff includes a dynamic marking 'f' and the instruction 'Ped + HW cpl.' with a slur. A large watermark 'NB noter' is overlaid on the score, with the text 'This music is copyright protected' written diagonally across it.

24

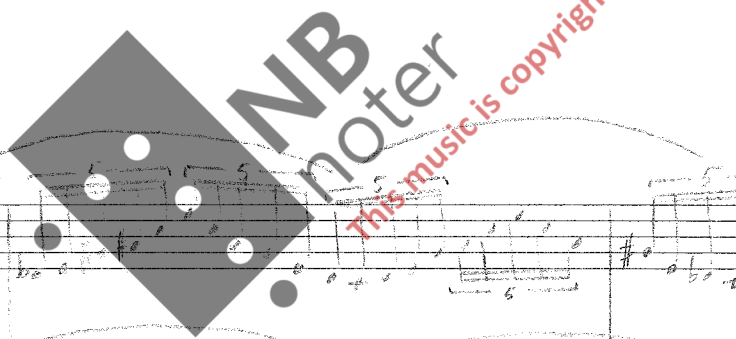
Handwritten musical score for measures 24-26. The score is written on three staves: Treble Clef (top), Bass Clef (middle), and Bass Clef (bottom). The top two staves are grouped by a brace on the left. The music features complex fingering with many '5' markings and slurs. The bottom staff includes a dynamic marking 'f' and the instruction 'Ped + HW cpl.' with a slur. A large watermark 'NB noter' is overlaid on the score, with the text 'This music is copyright protected' written diagonally across it.

27

Handwritten musical score for measures 27-29. The score is written on three staves: a grand staff (treble and bass clefs) and a separate bass clef staff. The music features complex rhythmic patterns, including sixteenth and thirty-second notes, and is heavily annotated with fingering numbers (1-5) and slurs. A large watermark is present in the center of the page.

30

Handwritten musical score for measures 30-32. The score is written on three staves: a grand staff (treble and bass clefs) and a separate bass clef staff. The music continues with complex rhythmic patterns and is annotated with fingering numbers and slurs. A large watermark is present in the center of the page.



33

Handwritten musical score for measures 33-35. The score is written on three staves. The top two staves are a grand staff (treble and bass clefs), and the bottom staff is a separate bass clef staff. The music features complex fingering with many '5' annotations and slurs. The bottom staff has a key signature change to one sharp (F#) and a 'cillo' marking.

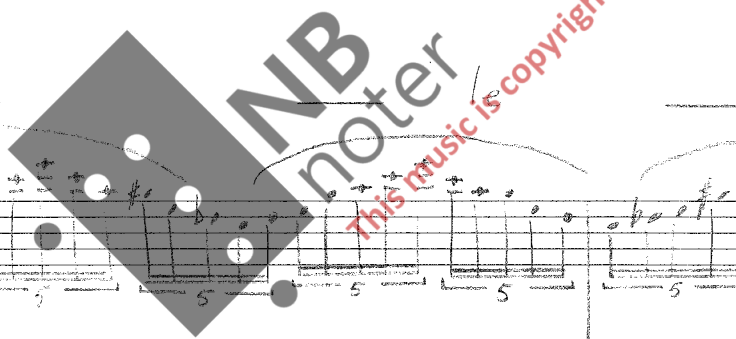
Acc.

36

Handwritten musical score for measures 36-38. The score is written on three staves. The top two staves are a grand staff (treble and bass clefs), and the bottom staff is a separate bass clef staff. The music features complex fingering with many '5' annotations and slurs. The bottom staff has a key signature change to one sharp (F#) and a 'cillo' marking. There is a large watermark in the center of the page.

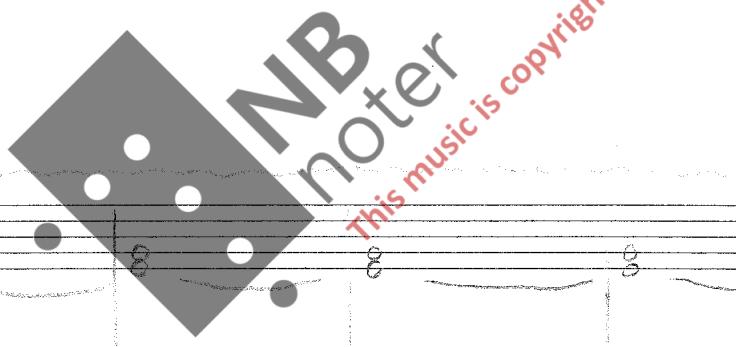
ran do - - - 180

+tg. 16'



39  $\text{♩} = 180$

Handwritten musical score for measures 39-40. The score is written on three staves. The top staff is in treble clef, the middle in bass clef, and the bottom in bass clef. The music features a complex melodic line in the treble with many slurs and ties, and a bass line with triplets and slurs. The tempo is marked as quarter note = 180.



41

$\text{♩} = 60$

Handwritten musical score for measures 41-42. The score is written on three staves. The top staff is in treble clef, the middle in bass clef, and the bottom in bass clef. The music features a complex melodic line in the treble with many slurs and ties, and a bass line with triplets and slurs. The tempo is marked as quarter note = 60.



49 ♩ = 60

Handwritten musical score for the first system, measures 49-52. It consists of three staves: a grand staff (treble and bass clefs) and a separate bass clef staff. The music is in 3/4 time with a tempo of ♩ = 60. The first staff contains a melodic line with various ornaments and trills. The second staff provides harmonic accompaniment with chords and moving lines. The third staff contains a bass line with triplets and other rhythmic patterns. Dynamics include piano (p) and fortissimo (ff). A watermark 'NB noter' is visible over the middle of the system.

subbass 16' p

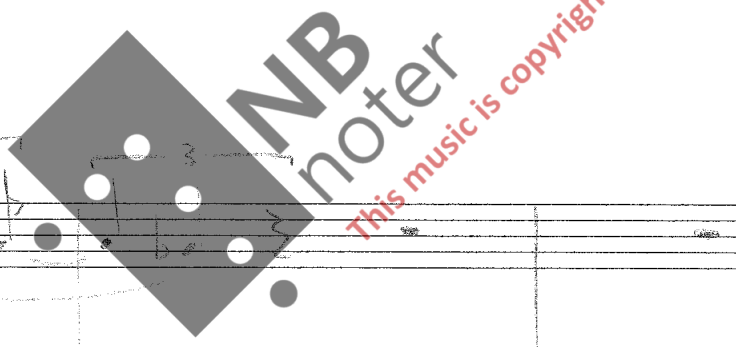
Handwritten musical score for the second system, measures 53-56. It continues the piece with three staves. The notation includes complex rhythmic figures, triplets, and various ornaments. The dynamic markings include piano (p) and fortissimo (ff). The watermark 'NB noter' and 'This music is copyright protected' are overlaid on the score.

57

Handwritten musical score for measures 57-59. The score is written on three staves: two treble clefs and one bass clef. Measure 57 features a treble clef staff with a 5-measure slur and a bass clef staff with a 7-measure slur. Measure 58 includes a treble clef staff with a trill (tr) and a bass clef staff with a 5-measure slur. Measure 59 shows a treble clef staff with a 5-measure slur and a bass clef staff with a 5-measure slur. The notation includes various notes, rests, and slurs. A dynamic marking 'HW mf' is present in the middle of the system.

60

Handwritten musical score for measures 60-62. The score is written on three staves: two treble clefs and one bass clef. Measure 60 features a treble clef staff with a 3-measure slur and a bass clef staff with a 3-measure slur. Measure 61 includes a treble clef staff with a 3-measure slur and a bass clef staff with a 3-measure slur. Measure 62 shows a treble clef staff with a 3-measure slur and a bass clef staff with a 3-measure slur. The notation includes various notes, rests, and slurs. A dynamic marking 'SW Gershwin Princ. 8' mf' is present in the middle of the system.



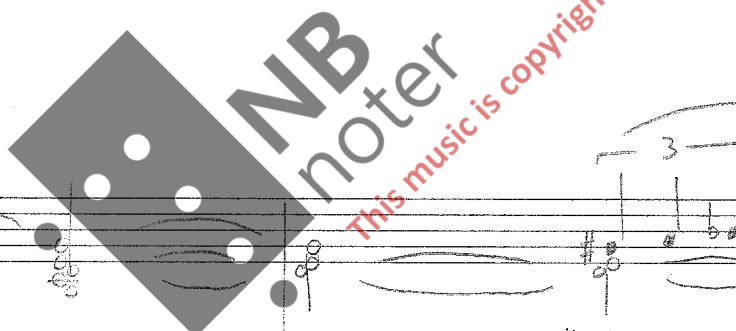


63

Handwritten musical score for measures 63-65. The score is written on three staves: Treble, Middle, and Bass. The Treble staff features a melodic line with a slur over measures 63-65 and a triplet of eighth notes in measure 64. The Middle staff contains a complex accompaniment with triplets in measures 64 and 65. The Bass staff has a simple accompaniment with a triplet in measure 64.

66  $\text{♩} = 70$   
RP 8'

Handwritten musical score for measures 66-70. The score is written on three staves: Treble, Middle, and Bass. The Treble staff features a melodic line with slurs and triplets, and dynamic markings *p*, *mp*, and *mf*. The Middle staff contains a complex accompaniment with slurs and triplets, and dynamic markings *mp* and *mf*. The Bass staff has a simple accompaniment with slurs and triplets, and dynamic markings *p* and *mp*.



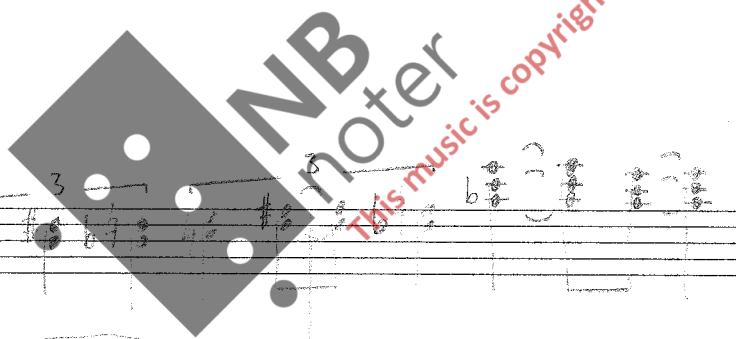
$\text{♩} = 50$

70

Handwritten musical score for measures 70-72. The score is written on three staves: Treble, Bass, and Bass. The key signature is one sharp (F#). The tempo is marked as quarter note = 50. The music features complex rhythmic patterns, including triplets and groups of five notes. The first measure of measure 70 has a dynamic marking of *f*. The second measure of measure 70 has a sharp sign (#) above the staff. The score includes various musical notations such as beams, slurs, and dynamic markings.

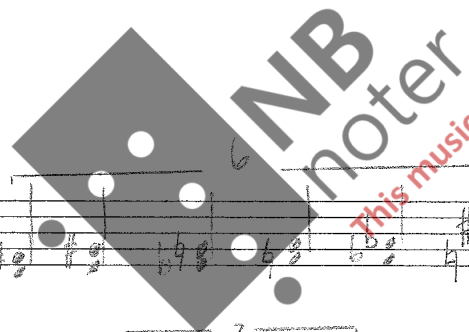
73

Handwritten musical score for measures 73-75. The score is written on three staves: Treble, Bass, and Bass. The key signature is one sharp (F#). The music continues with complex rhythmic patterns, including triplets and groups of five notes. The score includes various musical notations such as beams, slurs, and dynamic markings.



77

Handwritten musical score for measures 77-80. The score is written on three staves: a treble clef staff at the top, and two bass clef staves below it. The music features complex rhythmic patterns, including triplets and quintuplets, and various articulations such as slurs and accents. The notation is dense and includes many accidentals and dynamic markings.



This music is copyright protected

81

Handwritten musical score for measures 81-84. The score is written on three staves: a treble clef staff at the top, and two bass clef staves below it. The music continues with complex rhythmic patterns, including triplets and quintuplets, and various articulations such as slurs and accents. The notation is dense and includes many accidentals and dynamic markings.

84

X5

Handwritten musical score for measures 84-86. The score is written on three staves: a treble clef staff at the top, and two bass clef staves below it. The music features complex rhythmic patterns with many triplets and quintuplets. There are various accidentals (sharps, flats, naturals) and dynamic markings. A large watermark 'NB noter' is overlaid diagonally across the middle of the page.

Acc

el

er

gn

87

Handwritten musical score for measures 87-90. The score is written on three staves: a treble clef staff at the top, and two bass clef staves below it. The music continues with complex rhythmic patterns, including triplets and quintuplets. There are various accidentals and dynamic markings. A large watermark 'NB noter' is overlaid diagonally across the middle of the page.

90

do  $\text{♩} = 75$

Rubato

Handwritten musical score for measures 90-92. The score is written on three staves. The top staff is a treble clef with a grand staff bracket on the left. The middle and bottom staves are bass clefs. Measure 90 features a complex bass line with triplets and quintuplets. Measure 91 includes dynamic markings 'SW' and 'pp'. Measure 92 continues the bass line with a triplet. A large watermark 'NB noter' is overlaid on the score.

93

Handwritten musical score for measures 93-95. The score is written on three staves. The top staff is a treble clef with a grand staff bracket on the left. The middle and bottom staves are bass clefs. Measure 93 features a treble line with a triplet and a bass line with a triplet. Measure 94 includes a treble line with a triplet and a bass line with a triplet. Measure 95 features a treble line with a triplet and a bass line with a triplet. A large watermark 'NB noter' is overlaid on the score.

97 ♩=50 Tempo giusto



104

Handwritten musical score for measures 104 and 105. The score is written on three staves: a grand staff (treble and bass clefs) and a separate bass clef staff. The music features complex rhythmic patterns, including triplets and quintuplets, and various accidentals. A large watermark is present over the lower portion of this system.

106

Handwritten musical score for measures 106 and 107. The score is written on three staves: a grand staff (treble and bass clefs) and a separate bass clef staff. The music continues with complex rhythmic patterns, including triplets and quintuplets. The dynamic marking *mf* is present in both the grand staff and the separate bass clef staff. A large watermark is present over the upper portion of this system.



109

Handwritten musical score for measures 109-111. The score is written on three staves: Treble, Bass, and Bass. Measure 109 features a treble staff with a whole rest and a bass staff with a triplet of eighth notes. Measure 110 contains a complex bass line with a quintuplet of eighth notes and a dynamic marking of *mp*. Measure 111 shows a bass line with a triplet of eighth notes and a dynamic marking of *mp*.

112

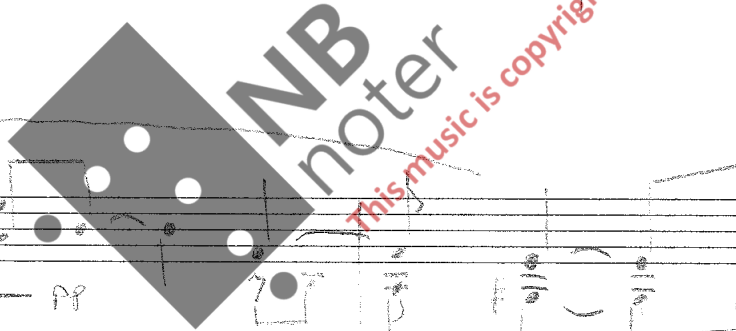
Handwritten musical score for measures 112-114. The score is written on three staves: Treble, Bass, and Bass. Measure 112 features a treble staff with a whole rest and a bass staff with a complex melodic line. Measure 113 contains a bass line with a quintuplet of eighth notes and a dynamic marking of *p*. Measure 114 shows a bass line with a triplet of eighth notes and a dynamic marking of *p*.





115

Handwritten musical score for measures 115-117. The score is written on three staves: a grand staff (treble and bass clefs) and a separate bass clef staff. Measure 115 features a piano (*p*) dynamic. Measure 116 includes a sixteenth-note triplet in the bass clef staff. Measure 117 contains a five-note arpeggiated figure in the treble clef staff and a triplet in the bass clef staff. The notation includes various accidentals, slurs, and articulation marks.



118

Handwritten musical score for measures 118-120. The score is written on three staves: a grand staff (treble and bass clefs) and a separate bass clef staff. Measure 118 features a pianissimo (*pp*) dynamic. Measure 119 includes a sixteenth-note triplet in the bass clef staff. Measure 120 contains a sixteenth-note triplet in the bass clef staff. The notation includes various accidentals, slurs, and articulation marks.

121

Handwritten musical score for measures 121-124. The score is written on three staves: a grand staff (treble and bass clefs) and a separate staff for Oboe 8. The music includes various notes, rests, and dynamic markings such as 'ppp'. There are also handwritten annotations like '3' and '5' under some notes, and a large watermark 'NB noter' is overlaid on the score.

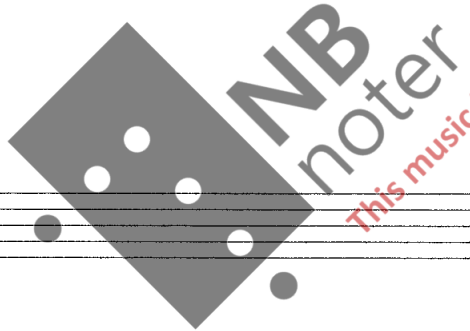
125

Handwritten musical score for measures 125-128. The score is written on three staves: a grand staff (treble and bass clefs) and a separate staff for Oboe 8. The music includes various notes, rests, and dynamic markings such as 'ppp'. There are also handwritten annotations like '3' and '5' under some notes, and a large watermark 'NB noter' is overlaid on the score.

128

XX

Handwritten musical score for piano, measures 128-131. The score is written on three staves: a grand staff (treble and bass clefs) and a separate bass clef staff below. The music includes various notes, rests, and dynamic markings such as 'ppp' and 'f'. There are also some handwritten annotations and a large bracket over the first two staves.



*This music is copyright protected*

Three empty musical staves for writing, consisting of a grand staff (treble and bass clefs) and a separate bass clef staff below.