

TURN BACK TO THAT POINT WHERE YOU (think you) WERE THAT DAY

- for solo guitar



Charlotte Piene

(2011)

New version 2013

Approx. duration: 7 min

SCORDATURA.

The piece starts with this tuning. During the piece, string 1, 4, 2 (in the order as the action happens) are tuned down. The string should be tuned down at least a quartertone.

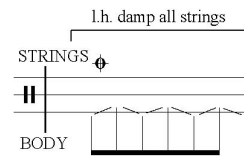
The written pitches in the score are played on the strings/positions where they normally are, in relation to the scordatura.



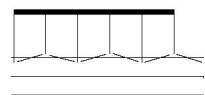
Scordatura



Damp all strings (with left hand). Damped until "open".



Strike body when notated on the bottom line.



Strike strings vertically when notated on the top line.

r.h gliss on all strings



Glissando on all strings, horizontally.

l.h barré gliss (whistle sound)



Fast left hand movement on all strings on fingerboard, to make a "whistling" sound. Direction up/down indicated.



Fast arpeggio over all strings, with finger nails.

r.h fingernail on frets between string 5 and 6

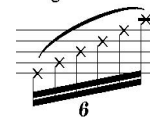


Slide finger nail up or down the frets, between string 5 and 6. Start at the top of the fingerboard and end approximately at fret 7.

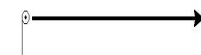


Loud breathing .

"guero" on bridge/string attachments



Slide finger nail as fast as possible over the bridge/ string attachments.

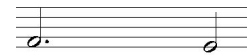


Movement by right foot on the floor.

hit frets 5-7-12
(harmonics)



Left hand: hit the harmonics on given frets, right hand: small arpeggio over all strings.



p Strike slowly on all strings (as in the beginning)



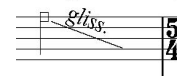
Strike strings vertically at the same time as playing the pitches.

l.h
3rd string
on 'head'



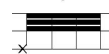
3rd string plucked with left hand between tuning peg and 'stop'.

r.h
slowly from bridge to fingerboard.
1st fingernail on string 2.



Grab 1st string by 1st and 2nd finger on the right hand. Slide from bridge to fingerboard. The sound is mainly produced by 1st finger nail, touching the 2nd string.

fingertips
on body



Tap on body as fast as possible.

Hard pressure on strings.
Gliss. between chords.



Heavy pressure on the strings. Glissando between the chords. It should produce an 'iterated' sound where the pitches are barely audible.

♢
l.h damp string 1,2 and 3,
r.h trem. on same strings



Left hand should damp 1st, 2nd and 3rd string, on the lower end of fingerboard. Right hand makes a fast tremolo at the same strings close to bridge. Left hand should gliss slowly towards right hand.



2 3/4 4/4 ♩ = 100 → ♩ = 140 2/4 2/4 4/4

8

Up and down sim.

r.h. fingernail on frets between string 5 and 6

mp

f

tap body with fingertips (no nails)

r.h. gliss on all strings

mp

6/4 as fast as possible

f

mp

VOICE

hah-hah

ON BODY

15 4/4 2/4 7/8 ♩ = 100 3/4 7/8

slow movement, r.h. fingernail on 6th string

mp

hee

mf

♩ = 80

f

VOICE

hah-hah

mf

f

mf

STRINGS

f

mf

BODY

f

6/4

4/4 ♩ = 69

VOICE

haah heeh

mf

1.h barré gliss ('whistle')

r.h gliss on all strings

f

p

mf

mf

f

BODY

circular movement of foot

mp

f

mf

mf

♩ = 100

♩ = 140

3/4

6/8

4/4

2/4

5/4

r.h slowly from bridge to fingerboard/frets. 1st finger nail on string 2.

1.h 3rd string on 'head'

finger nail on 6th string

Up and down sim.

r.h gliss on all strings

mp

mf

f

mp

mf

f

tap body with fingertips (no nails)

knock on body (knuckles)

mp

mf

f

rit.

♩ = 96

open
5/4 harm. l.v.

ord. l.v.

3/4

l.v.

6/4 harm. l.v.

ord. l.v.

5

5

"guero" on bridge/
string attachments

6/4

fast gliss down

3/4

l.v.

5

6/4

STRINGS

BODY

fast movement of foot

knock on body (knuckles)

mf

p

mf

p

mf

p

breath out

in

(in)

VOICE

1st string tuning peg
gliss down

6/4 harm. l.v.

ord. l.v.

harm.

mf

f

mf

p

Strike slowly on all strings
(as in the beginning)

p

very slow movement,
r.h. fingernail on 6th string

p

rit. -----

♩ = 100

3/4

5/4

2/4

4/4

ff

6

ff

towards body
(mix sound from
strings and body)

mp

BODY

mp

mp

6

4/4

l.v

l.h 3rd string on 'head'

2nd

harm. l.v

3/4

3/4

f

ff

6/8

fingernail on 6th string

2/4

5/4

mp

l.h gliss on string F,C,A (1st,2nd,3rd)

p

STRINGS

knock on body (knuckles)

f

mp

BODY

(on strings)

2/4

6/4

Sing any pitch

2/4

6/4

Sing any pitch

VOICE

p

p

5/4

open harm. (l.v)

ord. (l.v)

mp

mf

mf

f

mf

mf

mp

mp

mp

4th string tuning peg gliss down

2nd string tuning peg gliss down

STRINGS

r.h gliss on all strings

mp

9

5/8 4/4 2/4 $\text{♩} = 96$

VOICE

hah-hah

hoooh
mp

8/9 $\text{♩} = 140$

l.h. barré gliss

f

mf

r.h. gliss on all strings

mf

STRINGS

p

mf

6/4

BODY

p

mf

8/9 $\text{♩} = 140$

VOICE

hah-hah hah heh

mf

as fast as possible

4/4 $\text{♩} = 100$

5/8 fingernail on 6th string 2/4

Less bouncing (closer to the strings, as in the beginning)

mf

rit.

f

mf

r.h. gliss on all strings

BODY

mf

foot back and forth

f

mp

mp

(♩ = 100)

8 $\frac{2}{4}$ $\frac{4}{4}$ "interrupt" $\frac{5}{4}$ $\frac{4}{4}$ $\frac{7}{8}$ $\frac{9}{16}$

mf *f* *ff* *f* *ff* *f* *mp*

(on strings) *mf*

fingertips on body, more and more

foot forward foot back

r.h. gliss on all strings

BODY

mp *mf* *ff* *ff*

→ ♩ = 88 ♩ = 140 ♩ = 72/ ad lib.

$\frac{9}{16}$ $\frac{3}{8}$ $\frac{2}{4}$ $\frac{4}{4}$

fingernail on 6th string *mf* *f* *f*

l.h. barre gliss ('whistle' sound)

l.h. damp string 1,2 and 3, gliss. from top of fingerboard to bridge. r.h. trem. on same strings

STRINGS

mf *mp* *f* *mf* *mp*