

RICARDO ODRIOZOLA

Agony and Ecstasy

for cello and piano





- Agony and Ecstasy - (oct/dec. 1986)

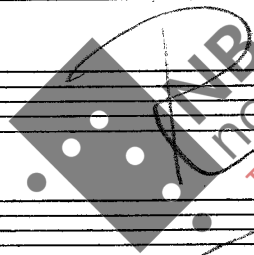
for 'cello and piano

by Ricardo Ochiabola

"In the end, choosing notes
to see if they make friends."

-Richard Sinclair.

Dedicado a mi querido
amigo Sebastian Dörfler.



This music is copyright protected

Sebastian Dörfler

- Agony and Ecstasy -

by Ricardo Odriozola

Allegro intenso, ♩ = 100

Cello

Piano

Pizz Anco

7

9

Handwritten musical score system 1. It consists of three staves. The top staff is in bass clef with a key signature of one sharp (F#). The middle and bottom staves are in treble clef. The music features various rhythmic patterns, including eighth and sixteenth notes, and rests. Dynamic markings include *mf* and *f*. There are also markings for *rit.* and *loco*. A large bracket spans across the middle and bottom staves.

Handwritten musical score system 2. It consists of three staves. The top staff is in treble clef. The middle and bottom staves are in bass clef. The music continues with similar rhythmic patterns. Dynamic markings include *mf* and *ff*. A section marked with a box and the letter 'A' is indicated. A watermark for 'NB noter' is visible over the system.

Handwritten musical score system 3. It consists of three staves. The top staff is in treble clef. The middle and bottom staves are in bass clef. The music features a dense texture with many notes. Dynamic markings include *mf* and *ff*. A watermark for 'NB noter' is visible over the system.

Handwritten musical score system 4. It consists of three staves. The top staff is in treble clef. The middle and bottom staves are in bass clef. The music features a dense texture with many notes. Dynamic markings include *ff* and *dim.*. A marking for *ppolo* is present at the end of the system.

17 *mp* *cresc.*
18 *sub ff* *P cresc.*

21 *fff* *Poco sost., A tempo*
22 *ff* *[Poco sost.] A tempo*
23 *ff*
24 *f*

25 *mf* *cantabile, ma doloroso e intenso*

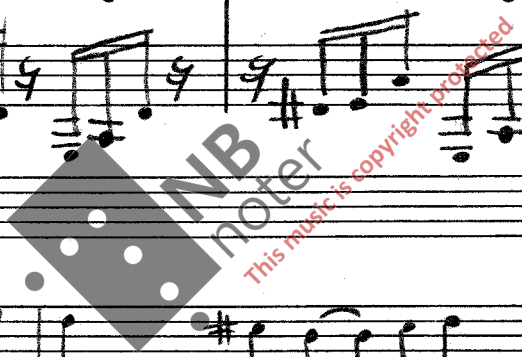
29 *mf*

Handwritten musical score for measures 27-30. The system includes a vocal line in treble clef and a piano accompaniment in grand staff (treble and bass clefs). Measure 27 is marked with a dynamic of *f* and the instruction *stacc.*. The piano part features a rhythmic accompaniment of eighth notes.

Handwritten musical score for measures 29-30. The system includes a vocal line in treble clef and a piano accompaniment in grand staff. The piano part continues with eighth-note accompaniment.

Handwritten musical score for measures 31-33. The system includes a vocal line in treble clef and a piano accompaniment in grand staff. Measure 31 is marked with a dynamic of *mp*. The piano part features eighth-note accompaniment.

Handwritten musical score for measures 34-37. The system includes a vocal line in treble clef and a piano accompaniment in grand staff. Measure 34 is marked with a dynamic of *dim.* and *cresc.*. The piano part features eighth-note accompaniment.



pizz. *Ando* $\# \# \#$ $\# \# \#$ *Alla breve* $\text{♩} = 66$

54 *accel* *leggiere*

8va

(coarse)

57

pp sempre

ff

(coarse)

63

cresc.

7

A ritmo di questa botutte
marc.

67

tr 4 mm

Handwritten musical score, measures 71-74. The system includes a bass line with a melodic line and a grand staff with piano accompaniment. Measure 71 is marked with a forte *f* dynamic. The music features various accidentals and phrasing slurs.

Handwritten musical score, measures 75-78. The system includes a bass line and a grand staff. Measure 75 is marked with a *cresc.* (crescendo) instruction. Measure 77 is marked with *f ma leggero* (forte ma leggero). Measure 78 is marked with *loco*. A large watermark is present across the page.

Handwritten musical score, measures 79-82. The system includes a bass line and a grand staff. Measure 79 is marked with a *cresc.* instruction. The piano accompaniment consists of rhythmic patterns in both hands.

Handwritten musical score, measures 83-86. The system includes a bass line and a grand staff. Measure 83 is marked with the number 83. Measure 85 is marked with *ff marcatisissimo* (fortissimo marcatisissimo). The music concludes with a final cadence.

Handwritten musical score system 1, measures 86-88. The system consists of three staves: a grand staff (treble and bass clefs) and a separate bass clef staff. Measure 86 starts with a treble clef and a key signature of one sharp (F#). Dynamics include *mf* and *ff*. The notation features chords and melodic lines with slurs and accents.

Handwritten musical score system 2, measures 89-91. The system continues with three staves. Measure 89 starts with a treble clef and a key signature of one sharp. Dynamics include *mf* and *ff*. The notation features chords and melodic lines with slurs and accents.

Handwritten musical score system 3, measures 92-93. The system continues with three staves. Measure 92 starts with a treble clef and a key signature of one sharp. Dynamics include *mf* and *ff*. The notation features chords and melodic lines with slurs and accents. The word "(pesante)" is written above the final measure of the system.

Handwritten musical score system 4, measures 94-96. The system continues with three staves. Measure 94 starts with a treble clef and a key signature of one sharp. Dynamics include *mf* and *ff*. The notation features chords and melodic lines with slurs and accents. The instruction "sempre avanti" is written below the system.

Handwritten musical score for measures 96-97. The system includes a grand staff with piano and bass clefs. Measure 96 is marked with a forte (**ff**) dynamic. Measure 97 is marked with a mezzo-forte (**mf**) dynamic. The music features complex chordal textures and melodic lines.

Handwritten musical score for measures 98-99. The system includes a grand staff with piano and bass clefs. Measure 98 is marked with a forte (**f**) dynamic. Measure 99 is marked with a forte-fortissimo (**fff**) dynamic. The music continues with dense harmonic structures.

Handwritten musical score for measures 100-101. The system includes a grand staff with piano and bass clefs. Measure 100 is marked with a forte-fortissimo (**fff**) dynamic. The music features intricate chordal patterns and melodic fragments.

Handwritten musical score for measures 102-103. The system includes a grand staff with piano and bass clefs. Measure 102 is marked with a forte (**f**) dynamic. The music concludes with complex harmonic textures.



105

Pizz

Ancor

Poco rit.

fff

Attempo, quasi tango, $\text{♩} = 60$

109

mf

113

pp senza espressione

P

mf

117

f senza espressione

PP

Handwritten musical score for piano, measures 121-124. The score is in G major (one sharp) and 4/4 time. It features a melodic line in the right hand and a harmonic accompaniment in the left hand. The dynamic marking *mf* is present. A large slur covers the entire system, with a double bar line and repeat sign at the end.

Handwritten musical score for piano, measures 125-130. The score is in G major (one sharp) and 4/4 time. It features a melodic line in the right hand and a harmonic accompaniment in the left hand. The dynamic marking *ppp* is present. The tempo marking *Poco meno Mosso, d=56* is written above the staff. The word *Poco rit.* is written above the staff in measure 128. A large slur covers the entire system, with a double bar line and repeat sign at the end.

Handwritten musical score for piano, measures 131-134. The score is in G major (one sharp) and 4/4 time. It features a melodic line in the right hand and a harmonic accompaniment in the left hand. The dynamic marking *ppp* is present. The tempo marking *non cresc.* is written above the staff. A large slur covers the entire system, with a double bar line and repeat sign at the end.

Handwritten musical score for piano, measures 135-138. The score is in G major (one sharp) and 4/4 time. It features a melodic line in the right hand and a harmonic accompaniment in the left hand. The dynamic marking *ppp* is present. A large slur covers the entire system, with a double bar line and repeat sign at the end.

I *Molto Più Mosso*, ♩ = 168

Pizz.

141 *sub f* *Molto più mosso*, ♩ = 168

f *feroce*

Anc

flauto

trem.

144

[♩ = 84] **J**

147

mf, sonore

153

sub P

Poco piu mosso, $\text{♩} = 96$

mf *doleroso*

Poco piu mosso, $\text{♩} = 96$

159

accl

p

mp

165

mp

p

Piu Mosso, $\text{♩} = 104$

Piu Mosso $\text{♩} = 104$

mp cantabile

171

p

mp

ped. al segno

K

176

mp

ped. al segno

Handwritten musical score for measures 181-185. The system consists of a single treble clef staff and a grand staff (treble and bass clefs). The key signature is one sharp (F#). The music features a melodic line in the treble staff and a complex accompaniment in the grand staff, including triplets and dynamic markings such as *p* and *gva*.

Handwritten musical score for measures 186-190. The system consists of a single treble clef staff and a grand staff. The key signature is one sharp (F#). The music continues with melodic and accompaniment parts, featuring triplets and dynamic markings like *p* and *gva*.

Handwritten musical score for measures 191-193. The system consists of a single treble clef staff and a grand staff. The key signature changes to two flats (Bb, Eb). The music includes triplets and dynamic markings such as *poco* and *pp*. There are also some handwritten annotations and a star symbol in the bass staff.

Handwritten musical score for measures 194-198. The system consists of a single treble clef staff and a grand staff. The key signature is two flats (Bb, Eb). The music features triplets and dynamic markings including *poco* and *accel*. There are also some handwritten annotations and a star symbol in the bass staff.

148

sempre accel - - - e crescendo

3

3

3

3

3

3

3

3

3

3

3

3

202

M Allegro

208

Allegro (sempre stacc.)

f

gva

214

Marc.

gva

222

228

Pow a pow accel

234

molto accel Presto d. = 96

gliss

molto accel

lento

239

gliss.

gliss

Handwritten musical score for measures 245-252. The system includes a bass line and a treble line. Measure 245 is marked with a treble clef and a 9/4 time signature. The bass line contains notes such as b^{\flat} , b^{\flat} , b^{\flat} , b^{\flat} . The treble line features a melodic line with notes like \sharp , \flat , \sharp , \flat . Performance markings include $! = !$, *Pizz*, *loco*, and *gva*. A large double bar line is drawn across the system.

Handwritten musical score for measures 249-252. The system includes a bass line and a treble line. Measure 249 is marked with a bass clef and a 11/4 time signature. The bass line contains notes such as \sharp , \sharp , \flat , \flat . The treble line features a melodic line with notes like \flat , \sharp , \flat , \flat . Performance markings include *arco*, *low*, *gva*, and *Pizz*. A large section of the score is heavily scribbled out with diagonal lines.

Handwritten musical score for measures 253-256. The system includes a bass line and a treble line. Measure 253 is marked with a bass clef and a 9/4 time signature. The bass line contains notes such as \sharp , \flat , \sharp , \flat . The treble line features a melodic line with notes like \sharp , \flat , \sharp , \flat . Performance markings include *cresc*, *sempre*, *cresc*, and *sempre*. A large section of the score is heavily scribbled out with diagonal lines.

Handwritten musical score for measures 250-256. The system includes a bass line and a treble line. Measure 250 is marked with a bass clef and a 9/4 time signature. The bass line contains notes such as \sharp , \flat , \sharp , \flat . The treble line features a melodic line with notes like \sharp , \flat , \sharp , \flat . Performance markings include *gva* and *gva*.

263

ff

mf *8va*

low

mf

(tre corde) - (una)

265

mf

ff

tr

low

ff

(tre) →

268

ff

ff

tr

271

ff *vigoroso*

ff *vigoroso*

3

3

294

And *Pizz*

sfz

mf

mf

297

cresc.

sfz

sf

301

sf

305

R *tr b*

sf

tr b

ritardando, ma sempre ff

309 *ritardando, ma sempre ff*

trem.

grv

trem.

314

< d = ♩ > sempre rit

f

sempre rit

low

grv

♩ = ca. 96 (♩ = 48)

con sentimento | *tenuto*

320

*con sentimento **

Polo

mf

molto legato e cantabile

40

326

pp

mf

cantabile

* with feeling, but not sentimental

Handwritten musical score for measures 331-334. The system includes a bass clef staff and a grand staff (treble and bass clefs). The music features various chords and melodic lines with dynamic markings such as *pp* and *p*. Measure numbers 331, 332, 333, and 334 are indicated.

Handwritten musical score for measures 335-339. The system includes a bass clef staff and a grand staff. The music continues with complex harmonic structures and dynamic markings like *p* and *pp*. Measure numbers 335, 336, 337, 338, and 339 are indicated.

Handwritten musical score for measures 340-344. The system includes a bass clef staff and a grand staff. The music features a section marked *sub P.* and includes dynamic markings such as *f*, *sub P.*, and *sub P.*. Measure numbers 340, 341, 342, 343, and 344 are indicated.

Handwritten musical score for measures 345-349. The system includes a bass clef staff and a grand staff. The music includes markings for *semplice* and *rit* with a tempo indication of $\text{♩} = \text{ca } 100$. Measure numbers 345, 346, 347, 348, and 349 are indicated.



Handwritten musical score for measures 352-361. The system consists of two staves. The upper staff is in bass clef with a 3/4 time signature and contains a series of half notes with slurs. The lower staff is in treble clef with a 3/4 time signature and contains chords and melodic lines. A *dim* marking is present in the upper staff. The system concludes with a 3/4 time signature.

Handwritten musical score for measures 362-367. The system consists of two staves. A box containing the letter 'U' is followed by the tempo marking *Andante*. The upper staff is in bass clef with a 3/4 time signature. The lower staff is in treble clef with a 3/4 time signature. A *mf* marking is present in the lower staff. The system concludes with a 3/4 time signature.

Handwritten musical score for measures 368-374. The system consists of two staves. The upper staff is in bass clef with a 3/4 time signature. The lower staff is in treble clef with a 3/4 time signature. A *mp* marking is present in the upper staff. *cresc* and *accel* markings are present in both staves. The system concludes with a 3/4 time signature.

Handwritten musical score for measures 375-384. The system consists of two staves. The upper staff is in bass clef with a 3/4 time signature. The lower staff is in treble clef with a 3/4 time signature. A box containing the letter 'A' is followed by the tempo marking *Allegro*. A *rit* marking is present in the upper staff. The system concludes with a 3/4 time signature.

380 *p* *V* *sospirando*

385 *p* *malinónico* *express.* *mesto*

390 *mf* *ricordando* *sempre in tempo* *Pizz* *f* *sempre in tempo*

398 *p* *mf*

406 *dim* *G.P.*

W *dim* *G.P.*

412 *W* *Ancora* *senza speranza*

W *Ancora* *senza speranza*

418 *mp*

W *mp*

424 *P*

W *P*

430

Pizz. Arco

437

Pizz Arco

444

sub

452

liberamente con

459 *anima*

466 *molto rit* 468 *rit*

(468) *tremolo* *Andante tranquillo* $\text{♩} = 66$
Non vib.

471 *sempre non vib!*

475

Handwritten musical score for measures 475-479. The system consists of three staves: a grand staff (treble and bass clefs) and a separate bass clef staff. The music features a complex texture with many beamed notes and slurs. Dynamic markings include *pp* and *ppp*.

480

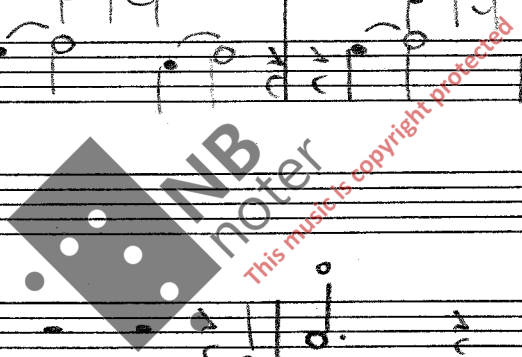
Handwritten musical score for measures 480-483. The system consists of three staves: a grand staff (treble and bass clefs) and a separate bass clef staff. The music features a complex texture with many beamed notes and slurs. Dynamic markings include *mp*, *p*, and *pp*.

484

Handwritten musical score for measures 484-487. The system consists of three staves: a grand staff (treble and bass clefs) and a separate bass clef staff. The music features a complex texture with many beamed notes and slurs. Dynamic markings include *mf*, *mp*, *pp*, and *cresc*.

488

Handwritten musical score for measures 488-491. The system consists of three staves: a grand staff (treble and bass clefs) and a separate bass clef staff. The music features a complex texture with many beamed notes and slurs. Dynamic markings include *mf* and *pp*. There are also handwritten annotations: a box containing the letter 'Z' and the word 'Han' with diamond symbols.



492

Handwritten musical score for measures 492-495. The system consists of three staves: a bass staff, a treble staff, and a lower bass staff. The treble staff contains a melodic line with slurs and accents, marked with dynamics *mp*, *p*, and *pp*. The middle treble staff contains a complex accompaniment with chords and slurs, marked with *mp*, *pp*, and *mf*. The lower bass staff contains a bass line with chords, marked with *pp*, *dim*, and *mp*. A watermark "NB" is visible in the center.

496

Handwritten musical score for measures 496-500. The system consists of three staves: a bass staff, a treble staff, and a lower bass staff. The treble staff contains a melodic line with slurs and accents, marked with *mp*, *p*, and *pp*. The middle treble staff contains a complex accompaniment with chords and slurs, marked with *pp*. The lower bass staff contains a bass line with chords, marked with *p*, *pp*, and *ppp*. A watermark "NB" is visible in the center.

500

Handwritten musical score for measures 500-503. The system consists of three staves: a bass staff, a treble staff, and a lower bass staff. The treble staff contains a melodic line with slurs and accents, marked with *p*, *pp*, and *ppp*. The middle treble staff contains a complex accompaniment with chords and slurs, marked with *p*, *pp*, and *ppp*. The lower bass staff contains a bass line with chords, marked with *p*, *pp*, and *ppp*. A watermark "NB" is visible in the center.

a

504

Poco *accel*

p *bp* *p* *bp*

508

Har. Nat. *Har. Nat.* *Har. Nat.*

dim

d = 76

512

Har(III) *Har(IV)* *Har(I)*

515

f *ff* *f*

poco rit, al -- fine --



