

Henrik Ødegaard:

Proprium Missae Nativitatis.

for baritone solo and
string quartet.

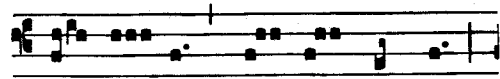
1. Introitus.
2. Graduale.
3. Alleluja.
4. Offertorium
5. Communio.

Prestholt 1988-89
Sich Ødegaard

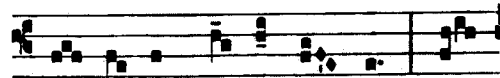
Introitus.

Ps. 2, 7. V. 1. 2. 8

D



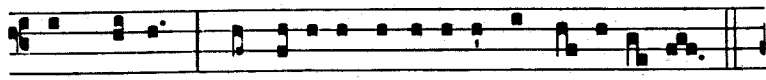
O- MI- NUS * dí- xit ad me :



Fí- li- us me- us es tu, e-



go hó- di- e gé- nu- i te. Ps. Qua-re fremu- é-



runt gentes : et pópu- li me- di- tá- ti sunt in- á- ni- a? Ant.

♩ = ca. 60
mp

Baryton

Do - - mi - nus dí - xit ad me. Do - mi - nus
di - xit ad me Do - - mi - nus Do - mi - nus di -
xit ad me Do - - mi - nus dí - xit Do - - - mi - nus
di - xit ad me Do - - mi - nus dí - xit ad me

Vln. I
Vln. II
Vla.
Vcl.

mp

(! = ca 60) Do - - mi - nus di - xit ad me -

pp

pp

pp

pp

2

fp

fp

f

p

fp

Do - - Do - - - mi - nus Do -

f

f

fp

6

mf fp — f ff:

mi-nus di - - - xit di-xit ad me Do-mi-nus di-xit ad

mp cresc. mp cresc. cresc.

10 mf f

Sub. p:

me : Fi - - li-us me-us es - - tu - - Fi - - li - us me - us

ff ff ff (sempre ff)

13 ff (sempre ff)

rit a. tpo

fp **f** **fp** **fp**

es tu Fi - li - us me -

mp

mp

mp

mp

16

us es tu Fi - li - us Fi - li - us me - us

f

mp

6

20

24

Fi-li - us me - - - us es tu Fi-li-us me-us

f *mf*

3 3

3

3

27

me us es tu e - - - go ho - - di - e

f *ff*

3 3

3

Handwritten musical score for measures 30-33. The score is in G major and 4/4 time. It features vocal lines and piano accompaniment. The lyrics are "ge-nu-i te" and "e-gor ho-di-e".

Measures 30-31: Vocal line (bass clef) has lyrics "ge-nu-i te". Piano accompaniment includes a treble clef staff with chords and a bass clef staff with a walking bass line. Dynamics include *mf* and *p*.

Measures 32-33: Vocal line (bass clef) has lyrics "e-gor ho-di-e". Piano accompaniment continues with chords and bass line. Dynamics include *mf* and *p*. There are triplet markings in the vocal line.

Handwritten musical score for measures 34-37. The score is in G major and 4/4 time. It features vocal lines and piano accompaniment. The lyrics are "ge-nu-i te".

Measures 34-35: Vocal line (bass clef) has lyrics "ge-nu-i te". Piano accompaniment includes a treble clef staff with chords and a bass clef staff with a walking bass line. Dynamics include *p*.

Measures 36-37: Piano accompaniment features a pizzicato section with triplets. Dynamics include *mp* and *pp*. The instruction "(arco sempre pp)" is written at the bottom right.

leggiero: mf

Qua-re fre - mu - e - runt gen - tes et

37

poco

This system contains four staves of music. The top staff is the vocal line with lyrics. The second staff is the right-hand piano part, the third is the left-hand piano part, and the fourth is the basso continuo part. The music features numerous triplets and dynamic markings such as *mf*, *f*, and *p*. A *poco* marking is present at the end of the system.

po - pu - li me - di - ta - ti sunt in a - ni - a

39

This system contains four staves of music. The top staff is the vocal line with lyrics. The second staff is the right-hand piano part, the third is the left-hand piano part, and the fourth is the basso continuo part. The music features numerous triplets and dynamic markings such as *mp*, *p*, and *pp*. A *#0* marking is present at the end of the system.

41

Glo-ri-a Pa-tri et Fi-li-o et Spi-ri-tu-i

p *pp*

43

San-cto si-cut e-rat in-princi-pio et nunc et sem-per

p *poco*

46. *f* *mp* *Arco: 3*

et in sae-cu-la sae-cu-lo-rum. A - men

48. *f* *mp* *mf*

l = ca. 60.

50

f: *mf* *f*

Do - - mi - - hus.

f *mf* *f*

pizz: 3 3

52 arco:

di - - xit ad - - me Fi - - li - - us

mf *f*

mf *f*

54.

me us es tu e - - -

ff.

mf

f

f

ff

56.

go ho - - di - e ge³ - nu - - i

mf

mf

Poco

58. *mp:*

te. Do mi nus di-

mf *mf* *mp* *mp*

p

Detailed description: This system contains measures 58, 59, and 60. The vocal line starts with a fermata over 'te.' followed by 'Do mi nus di-'. The piano accompaniment features a steady eighth-note pattern with triplets and sixths. Dynamics are marked as *mp* for the vocal and piano parts, *mf* for the piano accompaniment, and *p* for the piano part in measure 60.

61. *mf* *mp*

xit

Detailed description: This system contains measures 61, 62, and 63. The vocal line continues with 'xit'. The piano accompaniment continues with similar rhythmic patterns. Dynamics are marked as *mf* for the vocal and piano parts, and *mp* for the piano accompaniment.

Graduale.

Ps. 109, 3. V. 1

GR. II

T Ecum princi-pi- um * in di- e

vir-tú- tis tu- ae : in splendó-

ri- bus sanctó- rum, ex ú- te- ro

an-te lu- cí- fe- rum gé-

nu- i te. . Di- xit Dó-

mi- nus Dómi- no me-

o : Se- de a dextris me-

is : do- nec po- nam in- imi- cos

tu- os sca- bé- lum

pe- dum tu- ó- rum.

$\text{♩} = \text{ca } 60.$
mf

Te - cum prin - ci - pi - - - um in di -

p *mf*

- - - e vir - tu - - - tis

Handwritten musical score for measures 10-14. The score is in 4/4 time with a key signature of one flat (B-flat). The vocal line (top staff) has lyrics "tu - ae" and includes a triplet of eighth notes. The piano accompaniment consists of four staves: two treble clefs and two bass clefs. Dynamics include *p*, *mf*, and *pp*. A watermark "NBNoter" is visible across the score.

Handwritten musical score for measures 15-19. The score is in 4/4 time with a key signature of one flat (B-flat). The vocal line (top staff) has lyrics "In splen-do - ri - bus sanc-to -". The piano accompaniment consists of four staves: two treble clefs and two bass clefs. Dynamics include *mp* and *p*. Performance instructions include *Pizz:* and *Arco:*. A watermark "NBNoter" is visible across the score.

Handwritten musical score for measures 19-22. The score includes vocal lines and piano accompaniment for four instruments (Violin I, Violin II, Viola, and Cello/Double Bass). The key signature is two flats (B-flat and E-flat), and the time signature is 4/4. The lyrics are: rum ex u - te - ro.

Dynamic markings include *p*, *f*, *mp*, and *pp*. Performance instructions include accents (>), slurs, and triplets. The measure numbers 19, 20, 21, and 22 are indicated at the bottom of the staves.

Handwritten musical score for measures 23-26. The score includes vocal lines and piano accompaniment for four instruments (Violin I, Violin II, Viola, and Cello/Double Bass). The key signature is two flats (B-flat and E-flat), and the time signature is 4/4. The lyrics are: an - - telu - ci - - .

Dynamic markings include *p*, *f*, *pp*, *mf*, and *sp.* Performance instructions include accents (>), slurs, triplets, and the instruction "sul ponticello". The tempo marking is $\text{♩} = 54$. The measure numbers 23, 24, 25, and 26 are indicated at the bottom of the staves.

Handwritten musical score for measures 26-28. The score is in 3/4 time and features a vocal line and four piano accompaniment staves. The lyrics are "fe rum".

Measure 26: *pp.s.p* (pianissimo, sforzando, pianissimo). The piano accompaniment includes triplets and slurs. The vocal line has a slur over the first two notes.

Measure 27: *mf* (mezzo-forte). The piano accompaniment continues with triplets and slurs. The vocal line has a slur over the first two notes.

Measure 28: *mf* (mezzo-forte). The piano accompaniment continues with triplets and slurs. The vocal line has a slur over the first two notes.

Measure numbers 26, 27, and 28 are indicated at the bottom of the staves.

Handwritten musical score for measures 29-31. The score is in 3/4 time and features a vocal line and four piano accompaniment staves. The lyrics are "ge - nu-i te".

Measure 29: *p* (piano). The piano accompaniment includes triplets and slurs. The vocal line has a slur over the first two notes.

Measure 30: *mf* (mezzo-forte). The piano accompaniment includes triplets and slurs. The vocal line has a slur over the first two notes.

Measure 31: *p* (piano). The piano accompaniment includes triplets and slurs. The vocal line has a slur over the first two notes.

Measure numbers 29, 30, and 31 are indicated at the bottom of the staves.

Handwritten musical score for measures 33-36. The score is for a guitar and four voices (Soprano, Alto, Tenor, Bass). The key signature has one flat (B-flat) and the time signature is 8/8. The guitar part features a melodic line with triplets and a final measure with a 'p' dynamic marking. The vocal parts are mostly rests with some notes in the first measure.

33

Handwritten musical score for measures 37-40. The score is for a guitar and four voices. The key signature has one flat and the time signature is 8/8. The lyrics "Dixit Dominus Dominus me" are written under the vocal lines. The guitar part includes a section marked "S.p." (Soprano Part) with "pp" dynamics and a section marked "(ord)" with "mp" dynamics. A tempo marking "♩ = 92" is present. A large watermark "NB noter" is overlaid on the score.

37

Handwritten musical score for measures 40-42. The score is written for five staves: Bass, Treble, Treble, Bass, and Bass. The key signature is one flat (B-flat). Measure 40 starts with a tempo marking of $\text{♩} = 88$. The music features complex rhythmic patterns, including triplets and sixteenth notes, with some notes marked with '+' signs. Measure 41 includes a first ending bracket. Measure 42 ends with a repeat sign and a 3/4 time signature. The bottom staff has a bass clef and a B-flat key signature.

Handwritten musical score for measures 43-45. The score is written for five staves: Bass, Treble, Treble, Bass, and Bass. The key signature is one flat (B-flat). Measure 43 starts with a tempo marking of $\text{♩} = 88$. The music features complex rhythmic patterns, including triplets and sixteenth notes, with some notes marked with '+' signs. Measure 44 includes a first ending bracket. Measure 45 ends with a repeat sign and a 2/4 time signature. The bottom staff has a bass clef and a B-flat key signature. The lyrics "se - - - de dex - tris me - - -" are written below the second staff. The word "sul II:" is written above the second staff in measure 43. The word "mp.ord." is written below the second staff in measure 43. The word "L3" is written below the second staff in measure 43. The word "L3" is written below the second staff in measure 44. The word "L6" is written below the second staff in measure 45. A large watermark "NB noter" is visible across the score, with the text "this music is copyright protected" written in red below it.

Handwritten musical score for page 47. The score is in 7/4 time and consists of five staves. The lyrics are "do - nec po - nam".

Key markings and annotations include:

- Tempo: $\text{♩} = 56$
- Dynamic: P (Piano)
- Performance instructions: *rit.*, *pizz.*, *mp*, *mf*, *ord.*
- Technical markings: $L3 \rightarrow$, $L3 \rightarrow$, $L5$, 3 , 3 , 3

47

Handwritten musical score for page 51. The score is in 7/4 time and consists of five staves. The lyrics are "in-i-mi - - - cos - - - tu - - os".

Key markings and annotations include:

- Tempo: $\text{♩} = 69$ and $\text{♩} = 63$
- Dynamic: mf , mp
- Performance instructions: *pizz.*
- Technical markings: $L3 \rightarrow$, 3 , 3

51

Handwritten musical score for measures 55-58. The score is written for four staves: Violin I, Violin II, Viola, and Cello/Double Bass. The key signature is one flat (B-flat major or F minor). The time signature is 7/8, which changes to 5/8 and then 2/4.

Measure 55: Violin I and II play a melodic line with accents. Cello/Double Bass plays a rhythmic accompaniment. Dynamics include *mp* and *mf*. A *arco* instruction is present.

Measure 56: Similar accompaniment. Dynamics include *mf*, *p*, and *pp*. A *arco* instruction is present.

Measure 57: Similar accompaniment. Dynamics include *p* and *pp*. A *arco* instruction is present.

Measure 58: The Violin I and II parts are silent. The Viola and Cello/Double Bass parts play a melodic line. Dynamics include *pp*. A *sul pont.* instruction is present.

Lyrics: "sca - bel -"

Page number: 55

Handwritten musical score for measures 59-62. The score is written for four staves: Violin I, Violin II, Viola, and Cello/Double Bass. The key signature is one flat. The time signature is 3/4, which changes to 5/4 and then 3/4.

Measure 59: Violin I and II play a melodic line. Cello/Double Bass plays a rhythmic accompaniment. Dynamics include *pp*. A *sul pont.* instruction is present.

Measure 60: Similar accompaniment. Dynamics include *mf*. A *lum* instruction is present.

Measure 61: Similar accompaniment. Dynamics include *mf*. A *ord:* instruction is present.

Measure 62: Similar accompaniment. Dynamics include *mp*. A *ord:* instruction is present.

Lyrics: "lum"

Page number: 59

Handwritten musical score for page 62, featuring five staves. The music is in 2/4 time with a key signature of one flat (Bb). The score includes various musical notations such as triplets, slurs, and dynamic markings.

Lyrics: pe - - - dum tu - - - rum

Dynamic markings: *mf*, *pp*

Performance instructions: *ord.*, *mf*, *pp*

Measure numbers: 62

Handwritten musical score for page 66, featuring five staves. The music is in 3/4 time with a key signature of one flat (Bb). The score includes various musical notations such as slurs and dynamic markings.

Dynamic marking: *pp*

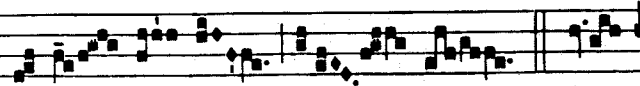
Measure numbers: 66

Alleluia.

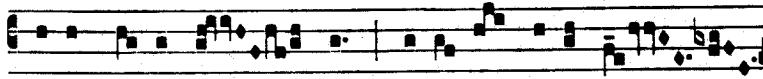
Ps. 2, 7

VIII

A



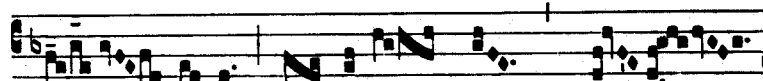
L- le- lú- ia. γ. D6-



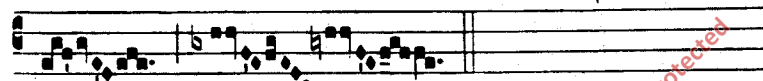
mi-nus di-xit ad me: Fí-li- us me- us es



tu, e- go hó-



di- e gé- nu- i te.



! = ca 63

Handwritten musical score for guitar. The score includes a vocal line and three guitar staves. The key signature is one flat (B-flat) and the time signature is 3/4. The vocal line starts with the lyrics "AL - - le - - lu -" and features a triplet of eighth notes. The guitar accompaniment includes a melody in the treble clef and a bass line in the bass clef. The bass line is marked with "pizz." (pizzicato) and "mp" (mezzo-piano). The score includes various musical notations such as slurs, accents, and dynamic markings.

51

Handwritten musical score for measures 51-54. The score consists of five staves. The top staff is a vocal line with a melodic line and some ornaments. The second staff is a piano accompaniment in treble clef, showing chords with the letter 'ia' written above them. The third staff is a cello/bass line in bass clef, and the fourth staff is a double bass line in bass clef. Measure 52 is marked with '(a)'. There are repeat signs (slashes with dots) in the piano and bass parts. A watermark 'NB water' is visible across the middle of the page.

52

poco f:

al - le - lu - ia

arco: P

arco: mf

arco: mf

9

Handwritten musical score for measures 55-58. The score consists of five staves. The top staff is a vocal line with the lyrics "al - le - lu - ia" written below it. The second staff is a piano accompaniment in treble clef, showing chords and dynamics like "arco:" and "P". The third staff is a cello/bass line in bass clef, and the fourth staff is a double bass line in bass clef. Measure 56 is marked with "poco f:". There are repeat signs in the piano and bass parts. A watermark "NB water" is visible across the middle of the page.

Handwritten musical score for measures 13-16. The vocal line contains the lyrics "al-le-lu-ia". The piano accompaniment includes triplets and sustained chords. A large watermark "IMB noter" is visible across the score.

Handwritten musical score for measures 17-20. The vocal line contains the lyrics "al-le-lu-ia". The piano accompaniment includes dynamics like "poco f", "mp", "pizz:", and "dolce:". A large watermark "IMB noter" is visible across the score.

Handwritten musical score for measures 21-24. The score is written on four staves. The first staff contains a vocal line with lyrics "al-le-lu-". The second staff contains a vocal line with lyrics "ia". The third and fourth staves contain instrumental parts. Dynamics include *p*, *mp*, *p* (II), *p* III, *pizz.*, *arco*, and *pp*. A large watermark "NB noter" is visible across the score.

Handwritten musical score for measures 25-28. The score is written on four staves. The first staff contains a vocal line with lyrics "ia al-le-lu-". The second staff contains a vocal line with lyrics "al-le-lu-". The third and fourth staves contain instrumental parts. Dynamics include *p* and *pp*. A large watermark "NB noter" is visible across the score.

Handwritten musical score for measures 29-32. The score consists of five staves: vocal line, piano accompaniment (treble and bass clefs), and a lower staff (likely cello or bass). The lyrics are: "ia al - le - lu - ia".

Measure 29: pp dynamic marking.

Measure 30: p dynamic marking.

Handwritten musical score for measures 33-36. The score consists of five staves: vocal line, piano accompaniment (treble and bass clefs), and a lower staff (likely cello or bass). The lyrics are: "Do mi-nus dix-it ad me:". The tempo is marked $\text{♩} = \text{♩} 92$.

Measure 33: pp dynamic marking.

Measure 34: mf dynamic marking. Includes performance instructions: "pizz:", "mf", and "pizz: mf".

Measure 35: mf dynamic marking. Includes performance instructions: "pizz: mf".

Measure 36: mf dynamic marking. Includes performance instructions: "pizz: mf".

Watermark: "ANB Inter - this music is copyright protected".

Handwritten musical score for measures 37-44. The score is written on five staves. The vocal line (top staff) includes the lyrics: "Fi-li - us me-us es". The music features a 7/4 time signature, a key signature of one sharp (F#), and a common time signature of 3/4. The piece is marked with a dynamic of *mf* (mezzo-forte). The notation includes various rhythmic values, including eighth and sixteenth notes, and is heavily ornamented with triplets and slurs. A large slur spans across the top of the first two systems. Measure numbers 37, 41, and 44 are indicated at the beginning of their respective systems.

Handwritten musical score for measures 39-46. The score is written on five staves. The vocal line (top staff) includes the lyrics: "tu e - go". The music features a 7/4 time signature, a key signature of one flat (Bb), and a common time signature of 3/4. The piece is marked with a dynamic of *mf* (mezzo-forte). The notation includes various rhythmic values, including eighth and sixteenth notes, and is heavily ornamented with triplets and slurs. A large slur spans across the top of the first two systems. Measure numbers 39, 43, and 46 are indicated at the beginning of their respective systems.

accel. ----- rit ----- ♩ = ca. 92.

41 accel. ----- rit ----- ♩ = ca. 92

44

$D = ca7b$

nu - i te

mf

f

arco:

mf

47

(e)

(e)

arco:

p

arco, sul pont:

p

arco, sul pont:

p

51

Handwritten musical score for voice and piano. The score is written on five staves. The first staff is for the voice, with lyrics "Lu - ia" written below it. The second, third, and fourth staves are for the piano accompaniment. The fifth staff shows a guitar chord diagram.

Handwritten annotations include:

- mf* (mezzo-forte) and *falsetto:* above the first measure of the voice line.
- p* (piano) above the second measure of the voice line.
- A dynamic marking *mf* is written below the guitar chord diagram.
- The text "PP II" is written below the guitar chord diagram.

The score is divided into four measures. The first measure contains the beginning of the vocal phrase and piano accompaniment. The second measure continues the vocal phrase. The third measure continues the vocal phrase. The fourth measure concludes the phrase with a fermata over the final note.

At the bottom left of the page, the number "64" is written.

Offertorium.

Ps. 95, 11

OF. IV

L Aeténtur * cae- li, et exsúl- tet
ter- ra an- te fá- ci- em Dó- mi-
ni: quó- ni- am ve- nit.

♩ = ca. 72.

Baryton

Vln I

Vln II

Vla.

Vcl.

trem. *f* Lae- ten- tur, lae- ten- tur cae - -

Baryton

lae - ten - tur cae - li et ex - sul - - -

Vln. I

Vln. II

Vla.

Vcl.

9

mf. $\downarrow = ca\ bb.$

mp

mp

mp

mp

rit...

mp

tet ex - sul - - - tet ex sul - - tet, exsul - - tet

13

mf

f

mf

f

mf

f

mf

f

mf

f

mf

f

mf

f

mf

f

mf

f

mf

f

mf

f

mf

f

et ex-sul-tet ter - - ra et ex-sul - - tet. et ex-sul - - tet

17

ter - - ra, ter - - ra et ex-sul-tet ter-ra, ter - - ra

21

Handwritten musical score for measures 25-28. The score is written on five staves: vocal line, two treble clef staves, and two bass clef staves. The vocal line includes the lyrics "ter - - ra". The music features a variety of note values, including quarter, eighth, and sixteenth notes, as well as rests. Dynamics include *p* (piano) and *mp* (mezzo-piano). A watermark "NB Moter" is visible across the score.

25

mp

Handwritten musical score for measures 29-32. The score is written on five staves: vocal line, two treble clef staves, and two bass clef staves. The vocal line includes the lyrics "An - - - te fa - - - ci - em Do - - -". The music features a variety of note values, including quarter, eighth, and sixteenth notes, as well as rests. Dynamics include *mf* (mezzo-forte) and *p* (piano). A watermark "NB Moter" is visible across the score.

29

33

mi - ni

f quo - ni - am ve - nit. quo -

f

poco f

mf

f

37

ni - am, quo - ni - am ve - nit, quo - ni - am

mf

ff

mf

ff

ff

41

ve - nit quo - ni - am . quo - ni - am ve - nit , ve - nit

Handwritten musical score for measures 41-44. The score includes a vocal line and three piano accompaniment staves. The lyrics are: "ve - nit quo - ni - am . quo - ni - am ve - nit , ve - nit". The piano accompaniment features dynamic markings such as *f* and *ff*, and includes a triplet in the second measure. The key signature has one flat (B-flat).

45

quo - ni - am ve - nit , quo - ni

Handwritten musical score for measures 45-48. The score includes a vocal line and three piano accompaniment staves. The lyrics are: "quo - ni - am ve - nit , quo - ni". The piano accompaniment features dynamic markings such as *mf* and *poco f:*. The key signature has one flat (B-flat).

Handwritten musical score for measures 49-52. The score is written on five staves. The top staff contains the vocal line with lyrics: "am, quo - ni - ve - hit, ve - nit. nit." The music is in 7/4 time. Dynamics include *ff* (fortissimo) and *tr* (trills). There are various accidentals and articulation marks throughout the piece.

Handwritten musical score for measures 53-56. The score is written on five staves. The music is in 7/4 time. Dynamics include *mp* (mezzo-piano). The score features complex rhythmic patterns, including triplets and sixteenth notes, and various accidentals. A large watermark "NB noter" is visible across the middle of the page.

Handwritten musical score for measures 56-59. The score consists of five staves. The top staff is a grand staff (treble and bass clefs) with a 9/4 time signature. The second and third staves are in treble clef with a 3/4 time signature. The fourth staff is in bass clef with a 3/4 time signature. The bottom staff is a grand staff (treble and bass clefs) with a 9/4 time signature. The music features a complex rhythmic pattern with many eighth and sixteenth notes, often beamed together. There are several slurs and ties throughout the piece.

56

Handwritten musical score for measures 60-63. The score consists of five staves. The top staff is a grand staff (treble and bass clefs) with a 9/4 time signature. The second and third staves are in treble clef with a 3/4 time signature. The fourth staff is in bass clef with a 3/4 time signature. The bottom staff is a grand staff (treble and bass clefs) with a 9/4 time signature. The music features a complex rhythmic pattern with many eighth and sixteenth notes, often beamed together. There are several slurs and ties throughout the piece. The lyrics "mp quo - ni - am ve -" are written below the top staff. A large watermark "NB noter" and "this music is copyright protected" is overlaid on the score.

60

mp

64

(1)

nit.

sub. pp:

y

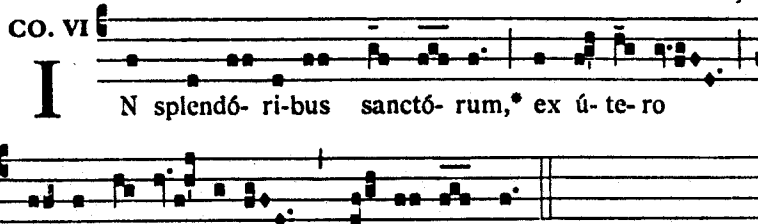
P



Communio.

Ps. 109, 3

CO. VI



I N splendó- ri-bus sanctó- rum,* ex ú- te-ro
an-te lu- cí- fe- rum gè- nu- i te.

$\text{♩} = \text{ca. } 54.$

non vibr:

Vln I
mp
non vibr: etc.

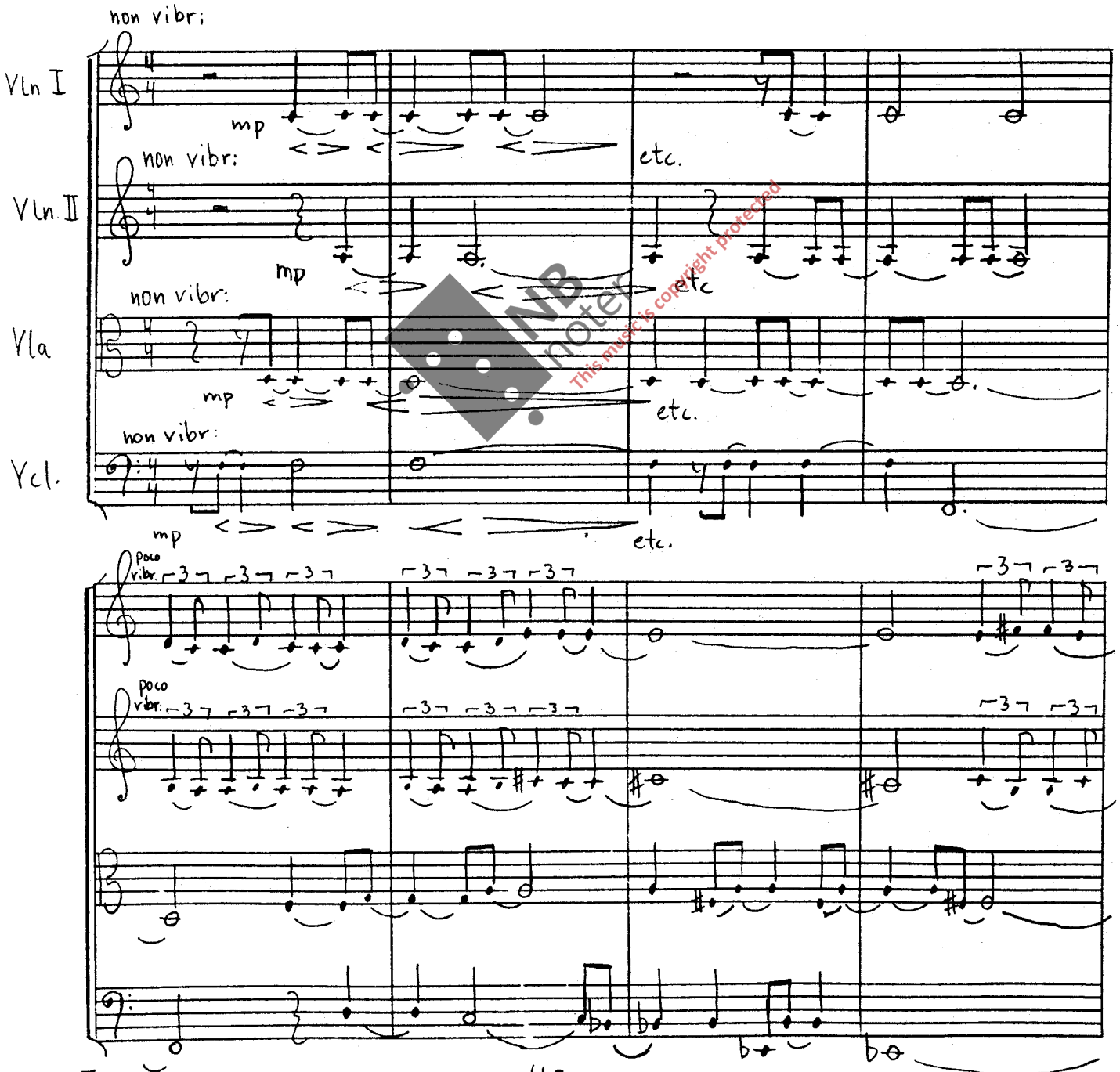
Vln II
non vibr: mp
etc.

Vla
mp
non vibr: etc.

Vcl.
mp
etc.

poco vibr. -37 -37 -37 -37 -37 -37 -37 -37

poco vibr. -37 -37 -37 -37 -37 -37



non vibr.
PP

non vibr.
PP

PP

9

Baryton Solo

Vln. I

Vln. II

Vla.

Vcl.

mf In splen-do - ri - bus - sanct - o - - - rum - - - mf in splen-do - ri -

pp

mp

P

P

13

Handwritten musical score for measures 17-20. The score is written for five staves (Soprano, Alto, Tenor, Bass, and Piano/Continuo). The lyrics are: "bus Sanct - - - O - rum in splen - do - ri - bus - - - Sanct -".

Measure 17: *poco mp*

Measure 18: *pp* (piano), *mf* (mezzo-forte)

Measure 19: *poco*, *mf*

Measure 20: *poco vibr:*, *mf*, *poco vibr:*

Measure 21: *poco mp*

Measure 22: *mf*

Handwritten musical score for measures 21-24. The score is written for five staves (Soprano, Alto, Tenor, Bass, and Piano/Continuo). The lyrics are: "rum - - - ex u - - te - ro".

Measure 21: *poco vibr:*, *mf*, *poco vibr:*, *mf*

Measure 22: *mf*, *pp*, *pp*, *pp*, *pp*

Measure 23: *mp:*, *non vibr:*, *non vibr:*, *pp*, *pp*, *pp*

Measure 24: *ex u - - te - ro*, *mf*, *non vibr:*, *pp*, *pp*

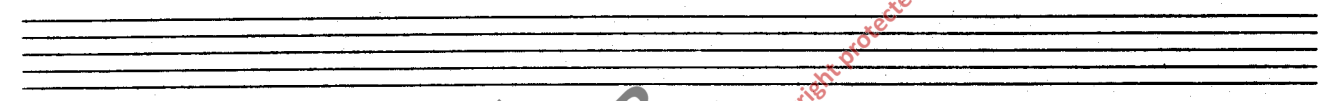
Measure 25: *pp*

Handwritten musical score for measures 25-28. The score includes vocal lines and piano accompaniment. The lyrics are: u-te-ro ex u-te-ro.

Measures 25-28:

- Measure 25: *P*
- Measure 26: *pp*
- Measure 27: *pp*
- Measure 28: *P*

25 P

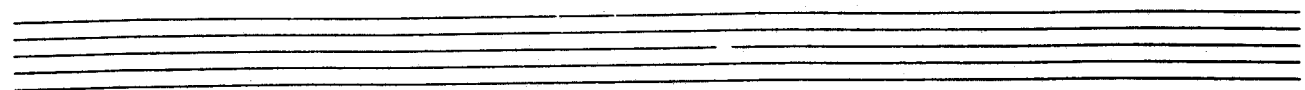


Handwritten musical score for measures 29-32. The score includes vocal lines and piano accompaniment. The lyrics are: ex u-te-ro u-te-ro.

Measures 29-32:

- Measure 29: *mf*
- Measure 30: *mf*
- Measure 31: *mf*
- Measure 32: *mf*

29 mf



Handwritten musical score for measures 33-36. The score consists of five staves: a vocal line and four piano accompaniment staves. The vocal line includes the lyrics: "ror ex u - - - te-ro u - - te-ro". The piano accompaniment features various dynamics including *mf*, *f*, and *pp*, along with performance instructions such as *Sul tasto*. The key signature has one sharp (F#) and the time signature is 3/4. The music includes complex rhythmic patterns with slurs and ties.

33

Handwritten musical score for measures 37-40. The score consists of five staves: a vocal line and four piano accompaniment staves. The vocal line includes the lyrics: "an - te lu-ci - fe rum an - te lu-ci-". The piano accompaniment features dynamics such as *mf*, *pp*, and *p*, along with performance instructions like *rit...*, *(poco)*, and *poco vibr.*. The music includes triplet markings and slurs. A large watermark "NB Moter" is visible across the score.

37

Handwritten musical score for measures 40-43. The score is written in G major and 3/4 time. It features a vocal line with lyrics and piano accompaniment. The lyrics are: "fe - rum an - te lu - - ci - fe - rum, an - te lu - ci -".

Measure 40: *mf* *poco vibr.* *f* *molto*

Measure 41: *mf* *f*

Measure 42: *mf* *f*

Measure 43: *f* *molto*

The piano accompaniment consists of a right hand with eighth-note triplets and a left hand with quarter notes. The vocal line has a melodic line with some triplets and a lower line with sustained notes.

Handwritten musical score for measures 43-46. The score is written in G major and 3/4 time. It features a vocal line with lyrics and piano accompaniment. The lyrics are: "fe - rum".

Measure 43: *P* *pp* *pp non vibr.* *pp*

Measure 44: *pp*

Measure 45: *pp*

Measure 46: *pp*

The piano accompaniment consists of a right hand with quarter notes and a left hand with quarter notes. The vocal line has a melodic line with a fermata in the first measure and a lower line with sustained notes.

43

Handwritten musical score for measures 47-50. The score is written on four staves. The top staff is the vocal line with lyrics: "um", "ge", "ge". The bottom staff is the bass line with lyrics: "b", "b", "b", "b". Dynamics include *mf*, *pp*, and *mp*. The music features a 7/8 time signature and includes various rhythmic patterns and articulations.

Handwritten musical score for measures 51-54. The score is written on four staves. The top staff is the vocal line with lyrics: "ge - - - nu i - - - te". The bottom staff is the bass line. Dynamics include *p*. The music features a 7/8 time signature and includes various rhythmic patterns and articulations.

Handwritten musical score for a four-part setting. The score is written on four staves, with the top staff in bass clef and the others in treble clef. The music consists of eighth and sixteenth notes, often beamed together. Dynamics include *pp* (pianissimo) with hairpins. A watermark "INB notef" and "this music is copyright protected" is visible across the score. The number "55" is written at the bottom left of the first staff.