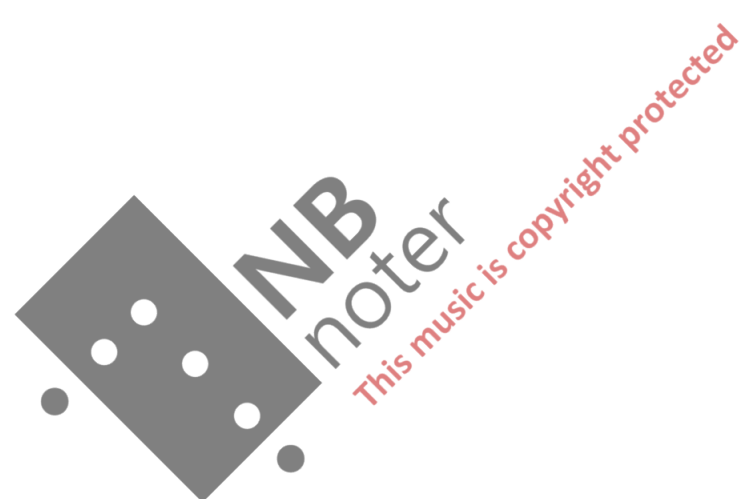


frank nordensten

SYMPHONY no.2

FULL SCORE



frank nordensten
SYMPHONY no.2

composed 1981
revised version 2016

revised version, typesetting and material sponsored by:
NORSK KOMPONISTFORENING (Norwegian Society of Composers)

Duration: approx. 31 minutes

SCORE TRANSPOSED

orchestra:

piccolo
2 flutes
2 oboes
english horn
2 clarinets in Bb
bass clarinet
2 bassoons
double bassoon

4 horns in F
4 trumpets in C
3 trombones
bass trombone
tuba

timpani
percussion (min.2 players)
piano
harp

strings [16-14-12-10-8]

SYMPHONY no.2

frank nordensten (1981, rev. 2016)

♩ = 52

1

This page contains the musical score for the first system of Symphony no. 2. The score is divided into three main sections: woodwinds, brass/percussion, and strings.

- Woodwinds:** Piccolo, Flute 1, Flute 2, Oboe 1, Oboe 2, English Horn, Clarinet in B♭ 1, Clarinet in B♭ 2, Bass Clarinet, Bassoon 1, Bassoon 2, and Contrabassoon.
- Brass:** Horn 1-2 (F), Horn 3-4 (F), Trumpet 1-2 (C), Trumpet 3-4 (C), Trombone 1-2, Trombone 3-4 (4 bass), and Tuba.
- Percussion:** Timpani, G. Cassa, Snare Dr., and Susp. Cymbal.
- Other:** Harp and Piano.
- Strings:** Violin I, Violin II, Viola, Cello, and Double Bass.

The score includes various musical notations such as dynamics (mf, p, f, ff, fp, pizz), articulation (accents), and performance instructions (trills, slurs). The woodwind and string parts feature complex rhythmic patterns, including triplets and sixteenth-note runs. The brass section has a more rhythmic, punctuated role. The piano part includes large numbers (3, 4) indicating specific techniques or fingerings. The string section is highly active with intricate patterns and dynamic markings.

12 2 3

Picc. Fl. 1 Fl. 2 Ob. 1 Ob. 2 E. Hn. B. Cl. 1 B. Cl. 2 B. Cl. Bsn. 1 Bsn. 2 C. Bn. Hn. 1-2 Hn. 3-4 C Tpt. C Tpt. Tbn. Tbn. 3-4 Tuba Timp. C. Sn. dr. Cym. Hp. Pno. V. I. V. 2 Vla. Vel. D.B.

f *f* *f* *f* *mf* *p* *p* *p* *p* *p* *f* *mf* *ff* *pp* *pp* *pp* *arco* *pizz.* *pizz.*

4

24

Picc.

Fl. 1

Fl. 2

Ob. 1

Ob. 2

E. Hn.

B. Cl. 1

B. Cl. 2

B. Cl.

Bsn. 1

Bsn. 2

C. Bn.

4

Hn. 1-2

Hn. 3-4

C Tpt.

C Tpt.

Tbn.

Tbn. 3-4

Tuba

Timp.

C.

Sn. dr.

Cym.

Hp.

Pno.

4

V. 1.

V. 2.

Vla.

Vel.

D.B.

5

36

Picc.

Fl. 1

Fl. 2

Ob. 1

Ob. 2

E. Hn.

B. Cl. 1

B. Cl. 2

B. Cl.

Bsn. 1

Bsn. 2

C. Bn.

5

Hn. 1-2

Hn. 3-4

C Tpt.

C Tpt.

Tbn.

Tbn. 3-4

Tuba

Timp.

C.

Sn. dr.

Cym.

Hp.

Pno.

5

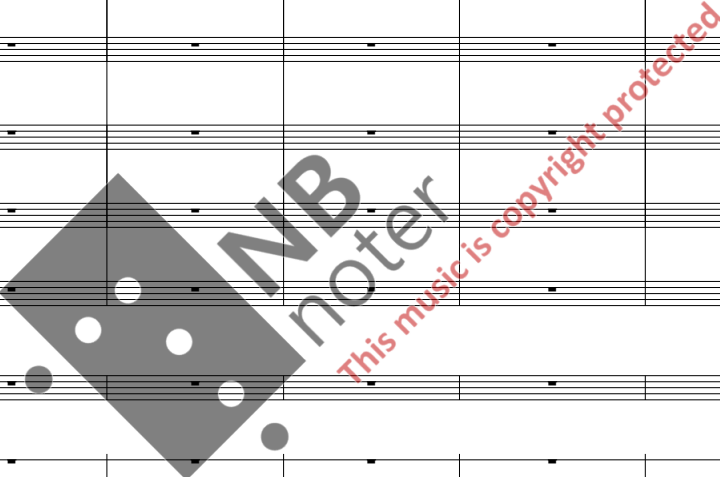
V. 1.

V. 2.

Vla.

Vel.

D.B.



47

6

Picc.

Fl. 1

Fl. 2

Ob. 1

Ob. 2

E. Hn.

Bs. Cl. 1

Bs. Cl. 2

B. Cl.

Bsn. 1

Bsn. 2

C. Bn.

6

Hn. 1-2

Hn. 3-4

C Tpt.

C Tpt.

Tbn.

Tbn. 3-4

Tuba

Timp.

C.

Sn. dr.

Cym.

6

V. 1.

V. 2.

Vla.

Vel.

D.B.



59

7

Picc. *f*

Fl. 1 *f*

Fl. 2 *f*

Ob. 1 *f*

Ob. 2 *f*

E. Hn. *f*

Bs. Cl. 1 *f*

Bs. Cl. 2 *f*

B. Cl. *f*

Bsn. 1 *p*

Bsn. 2 *p*

C. Bn. *p*

Hn. 1-2 *f*

Hn. 3-4 *f*

C Tpt. *f*

C Tpt. *f*

Tbn. *f*

Tbn. 3-4 *f*

Tuba *f*

Timp. *f*

C. *f*

Sn. dr. *f*

Cym. *f*

Hp. *f*

Pno. *f*

7

V. I. *p* *f*

V. 2. *p* *f*

Vla. *p* *f*

Vel. *p* *f*

D.B. *f*

8

70

Picc. *ff*

Fl. 1 *ff*

Fl. 2 *ff*

Ob. 1 *ff*

Ob. 2 *ff*

E. Hn. *ff*

B. Cl. 1 *ff*

B. Cl. 2 *ff*

B. Cl. *ff*

Bsn. 1 *ff*

Bsn. 2 *ff*

C. Bn. *ff*

8

Hn. 1-2

Hn. 3-4

C Tpt.

C Tpt.

Tbn.

Tbn. 3-4

Tuba

Timp.

C.

Sn. dr.

Cym.

Hp.

Pno.

8

V. 1. *pp*

V. 2. *pp*

Vla. *pp*

Vel. *pp*

D.B. *pp*

pizz. *ff*

9

78

Picc.
Fl. 1
Fl. 2
Ob. 1
Ob. 2
E. Hn.
B. Cl. 1
B. Cl. 2
B. Cl.
Bsn. 1
Bsn. 2
C. Bn.

9

Hn. 1-2
Hn. 3-4
C. Tpt.
C. Tpt.
Tbn.
Tbn. 3-4
Tuba
Timp.
C.
Sn. dr.
Cym.
Hp.
Pno.

9

V. 1.
V. 2.
Vla.
Vel.
D.B.

cresc. al [10]
cresc. al [10]
cresc. al [10]
cresc. al [10]
arco
f

87

10

Picc.

Fl. 1

Fl. 2

Ob. 1

Ob. 2

E. Hn.

Bs. Cl. 1

Bs. Cl. 2

B. Cl.

Bsn. 1

Bsn. 2

C. Bn.

10

Hn. 1-2

Hn. 3-4

C. Tpt.

C. Tpt.

Tbn.

Tbn. 3-4

Tuba

Timp.

C.

Sn. dr.

Cym.

Hp.

Pno.

10

V. 1.

V. 2.

Vla.

Vel.

D.B.

96 **11**

Picc. *ff*

Fl. 1 *f* *ff*

Fl. 2 *ff*

Ob. 1 *ff*

Ob. 2 *ff*

E. Hn. *ff*

B. Cl. 1 *f* *ff*

B. Cl. 2 *f* *ff*

B. Cl. *ff*

Bsn. 1

Bsn. 2

C. Bn.

11

Hn. 1-2

Hn. 3-4

C Tpt.

C Tpt.

Tbn.

Tbn. 3-4

Tuba

Timp. *f*

C.

Sn. dr.

Cym.

Hp.

Pno.

11

V. 1. *p* *ff* *f* *mf*

V. 2. *p* *ff* *f* *mf*

Vla. *arco* *pizz.* *ff* *f* *mf*

Vel. *p* *f* *mf*

D.B. *p* *f* *mf*

12 13

Picc. *ff* *pp* *cresc.*

Fl. 1 *ff* *pp* *cresc.*

Fl. 2 *ff* *pp* *cresc.*

Ob. 1 *ff* *pp* *cresc.*

Ob. 2 *ff* *p* *cresc.*

E. Hn. *ff* *pp* *cresc.*

B. Cl. 1 *ff* *pp* *cresc.*

B. Cl. 2 *ff* *pp* *cresc.*

B. Cl. *pp* *cresc.*

Bsn. 1 *pp*

Bsn. 2 *pp*

C. Bn.

12 13

Hn. 1-2 *pp* *fz*

Hn. 3-4 *pp* *fz*

C. Tpt. *pp* *fz*

C. Tpt.

Tbn.

Tbn. 3-4

Tuba

Timp. *pp* *cresc.*

C.

Sn. dr.

Cym.

Hp.

Pno.

12 13

V. I. *f* *ff* *pp* *cresc.*

V. 2. *fp* *f* *p* *p* *cresc.*

Vla. *fp* *f* *p* *pizz.* *mf*

Vel. *p* *f* *p* *pp* *cresc.*

D. B. *p*

14

119

Picc.

Fl. 1

Fl. 2

Ob. 1

Ob. 2

E. Hn.

B. Cl. 1

B. Cl. 2

B. Cl.

Bsn. 1

Bsn. 2

C. Bn.

14

Hn. 1-2

Hn. 3-4

C. Tpt.

C. Tpt.

Tbn.

Tbn. 3-4

Tuba

Timp.

C.

Sn. dr.

Cym.

Hp.

Pno.

14

V. 1.

V. 2.

Vla.

Vel.

D.B.

131 15

Picc. *ff*

Fl. 1 *ff*

Fl. 2 *ff*

Ob. 1 *solo* *mf* *ff*

Ob. 2 *ff*

E. Hn. *ff*

B. Cl. 1 *mp* *ff*

B. Cl. 2 *ff*

B. Cl. *ff*

Bsn. 1

Bsn. 2

C. Bn.

15

Hn. 1-2 *ff*

Hn. 3-4 *ff*

C. Tpt. *solo* *mf* *ff*

C. Tpt. *ff*

Tbn. *ff*

Tbn. 3-4

Tuba

Timp. *ff*

C.

Sn. dr.

Cym.

Hp.

Pno.

15

V. 1. *ff*

V. 2. *ff*

Vla. *pp* *mp* *ff*

Vel. *ff* *ppp* *pp* *mp* *ff*

D.B. *ff*



16 17

Picc. *ff*

Fl. 1 *f* *ff*

Fl. 2 *f* *ff*

Ob. 1 *ff*

Ob. 2 *ff*

E. Hn. *ff*

B♭ Cl. 1 *f* *ff*

B♭ Cl. 2 *f* *ff*

B. Cl. *mf cresc.* *ff*

Bsn. 1 *f* *ff*

Bsn. 2 *f* *ff*

C. Bn. *f* *ff*

16 17

Hn. 1-2 *ff*

Hn. 3-4 *ff*

C Tpt. *f*

C Tpt. *f*

Tbn. *f*

Tbn. 3-4 *f*

Tuba *f*

Timp.

C.

Sn. dr.

Cym.

Hp. *ff* Db, Cb, B - E, F, G, A

Pno. *f*

16 17

V. I. *ff* *pp*

V. 2. *ff* *pp*

Vla. *ff* *pp*

Vel. *ff* sul C

D.B. *ff*

159

18

Picc.

Fl. 1

Fl. 2

Ob. 1

Ob. 2

E. Hn.

B. Cl. 1

B. Cl. 2

B. Cl.

Bsn. 1

Bsn. 2

C. Bn.

18

Hn. 1-2

Hn. 3-4

C. Tpt.

C. Tpt.

Tbn.

Tbn. 3-4

Tuba

Timp.

C.

Sn. dr.

Cym.

Hp.

Pno.

18

V. 1.

V. 2.

Vla.

Vel.

D.B.

19

170

Picc. *f*

Fl. 1 *f*

Fl. 2 *f*

Ob. 1 *f*

Ob. 2 *f*

E. Hn. *f*

B. Cl. 1 *f*

B. Cl. 2 *f*

B. Cl. *f*

Bsn. 1 *f*

Bsn. 2

C. Bn.

19

Hn. 1-2 *p*

Hn. 3-4 *p*

C. Tpt. *f*

C. Tpt.

Tbn.

Tbn. 3-4 *p*

Tuba *p*

Timp.

C.

Sn. dr.

Cym.

Hp.

Pno. *f*

19

V. 1. arco sul pont. *f*

V. 2. arco sul pont.

Vla. arco sul pont. *f*

Vel. arco sul pont. *f* *pp*

D.B. *fp*

181

20

Picc.

Fl. 1

Fl. 2

Ob. 1

Ob. 2

E. Hn.

B♭ Cl. 1

B♭ Cl. 2

B. Cl.

Bsn. 1

Bsn. 2

C. Bn.

20

Hn. 1-2

Hn. 3-4

C Tpt.

C Tpt.

Tbn.

Tbn. 3-4

Tuba

Timp.

C.

Sn. dr.

Cym.

Hp.

Pno.

20

V. 1.

V. 2.

Vla.

Vel.

D.B.



194 21 22

Picc.

Fl. 1

Fl. 2

Ob. 1

Ob. 2

E. Hn.

B. Cl. 1

B. Cl. 2

B. Cl.

Bsn. 1

Bsn. 2

C. Bn.

21 22

Hn. 1-2

Hn. 3-4

C Tpt.

C Tpt.

Tbn.

Tbn. 3-4

Tuba

Timp.

C.

Sn. dr.

Cym.

Hp.

Pno.

21 22

V. I.

V. 2

Vla.

Vel.

D.B.



206

23

Picc.

Fl. 1

Fl. 2

Ob. 1

Ob. 2

E. Hn.

B. Cl. 1

B. Cl. 2

B. Cl.

Bsn. 1

Bsn. 2

C. Bn.

23

Hn. 1-2

Hn. 3-4

C Tpt.

C Tpt.

Tbn.

Tbn. 3-4

Tuba

Timp.

C.

Sn. dr.

Cym.

Hp.

Pno.

23

V. 1.

V. 2.

Vla.

Vel.

D.B.

24

216

Musical score for Symphony no. 2, page 22. The score includes staves for Piccolo, Flutes 1 and 2, Oboes 1 and 2, English Horn, Clarinets in Bb 1 and 2, Bass Clarinet, Bassoons 1 and 2, Contrabassoon, Horns 1-2 and 3-4, Trumpets in C 1 and 2, Trombones 1-3 and 4, Tuba, Timpani, Cymbals, Snare Drum, and Harp. The Violin and Viola sections are also shown with specific performance instructions like 'sul E', 'sul A', and 'pizz. div.'. The score features various dynamics such as *mp*, *mf*, *f*, and *ff*, and includes a large watermark reading "NB noter This music is copyright protected".

24

226

Picc. *ff*

Fl. 1 *ff*

Fl. 2 *ff*

Ob. 1 *ff*

Ob. 2 *ff*

E. Hn. *ff*

B. Cl. 1 *ff*

B. Cl. 2 *ff*

B. Cl. *ff*

Bsn. 1 *ff*

Bsn. 2 *ff*

C. Bn. *f*

Hn. 1-2 *ff*

Hn. 3-4 *ff*

C. Tpt. *ff*

C. Tpt. *mf*

Tbn. *ff*

Tbn. 3-4 *ff*

Tuba *ff*

Timp. *ff*

C. *f*

Sn. dr. *f*

Cym. *f*

Hp.

Pno.

V. 1. *ff* *pizz.*

V. 2. *ff* *pizz.* *arco*

Vla. *ff* *arco*

Vel. *ff*

D.B. *ff*

25

25

25

236

26

Picc. Fl. 1 Fl. 2 Ob. 1 Ob. 2 E. Hn. B. Cl. 1 B. Cl. 2 B. Cl. Bsn. 1 Bsn. 2 C. Bn.

ff

26

Hn. 1-2 Hn. 3-4 C. Tpt. C. Tpt. Tbn. Tbn. 3-4 Tuba Timp. C. Sn. dr. Cym. Hp. Pno.

con sord. fp

ff

fp

fp

26

V. 1. V. 2. Vla. Vel. D.B.

arco f

sul pont.

pizz. arco fp

arco

246

27

Picc.

Fl. 1

Fl. 2

Ob. 1

Ob. 2

E. Hn.

B. Cl. 1

B. Cl. 2

B. Cl.

Bsn. 1

Bsn. 2

C. Bn.

Hn. 1-2

Hn. 3-4

C Tpt.

C Tpt.

Tbn.

Tbn. 3-4

Tuba

Timp.

C.

Sn. dr.

Cym.

Hp.

Pno.

27

V. I.

V. 2

Vla.

Vel.

D.B.

con sord.

ff

ff

p

mp

f

ff

mf

f

ff

mf

f

pizz.

pizz.

pizz.

pizz.

pizz.

pizz.

This music is copyright protected

255

Picc. *ff*

Fl. 1 *ff*

Fl. 2 *ff*

Ob. 1 *fz*

Ob. 2 *fz*

E. Hn. *fz*

B. Cl. 1 *ff*

B. Cl. 2

B. Cl.

Bsn. 1

Bsn. 2

C. Bn.

28

Hn. 1-2 *ff*

Hn. 3-4 *ff*

C. Tpt. *fz*

C. Tpt. *ff*

Tbn. *fz*

Tbn. 3-4 *fz*

Tuba

Timp.

C.

Sn. dr.

Cym.

Hp.

Pno.

28

V. 1.

V. 2.

Vla.

Vel.

D. B. *pizz.* *arco*

28

264 29 Calmo $\text{♩} = 60$

Picc. ff

Fl. 1 ff

Fl. 2 ff

Ob. 1 ff

Ob. 2 ff

E. Hn. ff *solo espress.*

Bs. Cl. 1 ff

Bs. Cl. 2 ff

B. Cl. ff

Bsn. 1 ff

Bsn. 2 ff

C. Bn. ff

29 Calmo $\text{♩} = 60$

Hn. 1-2 f

Hn. 3-4 ff

C. Tpt. f

C. Tpt. f

Tbn. ff

Tbn. 3-4 ff

Tuba ff

Timp. ff

C. ff

Sn. dr. ff

Cym. ff

Hp.

Pno. ff

29 Calmo $\text{♩} = 60$

V. 1. *con sord.*

V. 2. pp *con sord.*

Vla. pp *con sord.*

Vel. p *solo*

D.B. pp

30

Picc. *solo espress.*
Fl. 1 *p*
Fl. 2 *p*
Ob. 1
Ob. 2
E. Hn.
B. Cl. 1 *mp*
B. Cl. 2
B. Cl.
Bsn. 1
Bsn. 2
C. Bn.

30

Hn. 1-2
Hn. 3-4
C Tpt.
C Tpt.
Tbn.
Tbn. 3-4
Tuba
Timp.
C.
Sn. dr.
Cym.

Hp.
Pno.

30

V. 1. *con sord.* *pp* *p* *solo* *mf*
V. 2. *p*
Vla. *p*
Vel. *pizz.* *tutti* *ppizz.* *p*
D.B. *pp*

280

31

Picc.

Fl. 1

Fl. 2

Ob. 1

Ob. 2

E. Hn.

B. Cl. 1

B. Cl. 2

B. Cl.

Bsn. 1

Bsn. 2

C. Bn.

31

Hn. 1-2

Hn. 3-4

C Tpt.

C Tpt.

Tbn.

Tbn. 3-4

Tuba

Timp.

C.

Sn. dr.

Cym.

Hp.

Pno.



V. 1.

V. 2.

Vla.

Vel.

D.B.

288

Picc. *p*

Fl. 1 *mf* *f* *p*

Fl. 2 *mf* *f* *p*

Ob. 1 *mp* *f*

Ob. 2 *f*

E. Hn. *f* *f*

B. Cl. 1 *f* *f*

B. Cl. 2 *f* *f*

B. Cl. *pp* *p*

Bsn. 1

Bsn. 2

C. Bn.

Hn. 1-2

Hn. 3-4

C. Tpt. *mf*

C. Tpt. *mf*

Tbn.

Tbn. 3-4

Tuba

Timp.

C.

Sn. dr.

Cym.

Hp.

Pno. *f* *mf*

V. I. *f* *f*

V. 2 *p*

Vla. *p*

Vel. *fp* *pp*

D.B. *fp* *pp*

295

32 *Appassionato* ♩ = 84

Picc.

Fl. 1

Fl. 2

Ob. 1

Ob. 2

E. Hn.

B. Cl. 1

B. Cl. 2

B. Cl.

Bsn. 1

Bsn. 2

C. Bn.

32 *Appassionato* ♩ = 84

Hn. 1-2

Hn. 3-4

C Tpt.

C Tpt.

Tbn.

Tbn. 3-4

Tuba

Timp.

C.

Sn. dr.

Cym.

32 *Appassionato* ♩ = 84

V. 1.

V. 2.

Vla.

Vel.

D.B.

301

33

ritard.

Picc. Fl. 1 Fl. 2 Ob. 1 Ob. 2 E. Hn. B. Cl. 1 B. Cl. 2 B. Cl. Bsn. 1 Bsn. 2 C. Bn.

33

ritard.

Hn. 1-2 Hn. 3-4 C. Tpt. C. Tpt. Tbn. Tbn. 3-4 Tuba Timp. C. Sn. dr. Cym.

Hp. Pno.

33

ritard.

V. 1. V. 2. Vla. Vel. D.B.

309 **34** ♩ = 116 **35** ♩ = 166

Picc. *ff*

Fl. 1 *ff*

Fl. 2 *ff*

Ob. 1 *ff*

Ob. 2 *ff*

E. Hn. *p cresc.*

B. Cl. 1 *p cresc.*

B. Cl. 2 *p cresc.*

B. Cl. *p cresc.*

Bsn. 1 *p cresc.*

Bsn. 2 *p cresc.*

C. Bn. *p cresc.*

34 ♩ = 116 **35** ♩ = 166

Hn. 1-2 *f* *ffz* *fz* *fz*

Hn. 3-4 *f* *ffz* *fz* *fz*

C. Tpt. *ffz*

C. Tpt. *ffz*

Tbn. *p* *fp* *ffz* *f*

Tbn. 3-4 *p* *fp* *ffz*

Tuba *p* *fp* *ffz* *f*

Timp.

C.

Sn. dr.

Cym.

34 ♩ = 116 **35** ♩ = 166

Hp.

Pno.

34 ♩ = 116 **35** ♩ = 166

V. 1. *p cresc.* *f*

V. 2. *p cresc.* *f*

Vla. *pizz.* *f* *arco* *cresc.* *f*

Vel. *pp* *pizz.* *cresc.* *arco* *f*

D.B. *pp* *pizz.* *cresc.* *arco* *f*

319 36 $\text{♩} = 52$ 37

Picc. Fl. 1 Fl. 2 Ob. 1 Ob. 2 E. Hn. B. Cl. 1 B. Cl. 2 B. Cl. Bsn. 1 Bsn. 2 C. Bn.

Detailed description: This block contains the musical notation for woodwinds and brass instruments. It includes parts for Piccolo, Flutes 1 and 2, Oboes 1 and 2, English Horn, Bass Clarinet 1, Bass Clarinet 2, Baritone Clarinet, Bassoon 1, Bassoon 2, and Contrabassoon. The score features various dynamics such as *ff*, *mf*, and *p*, and includes articulation marks like accents and slurs. Rehearsal marks 36 and 37 are present, with a tempo marking of quarter note = 52.

36 $\text{♩} = 52$ 37

Hn. 1-2 Hn. 3-4 C Tpt. C Tpt. Tbn. Tbn. 3-4 Tuba Timp. C. Sn. dr. Cym.

Detailed description: This block contains the musical notation for horns, trumpets, trombones, tuba, and timpani. It includes parts for Horns 1-2, Horns 3-4, Trumpets (with 'con sord.' marking), Trombones, Tuba, and Timpani. Dynamics include *f*, *ff*, and *fp*. A large watermark 'NB noter' is overlaid on the page, along with the text 'This music is copyright protected'.

36 $\text{♩} = 52$ 37

V. I. V. 2 Vla. Vel. D.B.

Detailed description: This block contains the musical notation for string instruments. It includes parts for Violin I, Violin II, Viola, Violoncello, and Double Bass. The score features complex rhythmic patterns and dynamics such as *ff*, *pp*, and *f*. Rehearsal marks 36 and 37 are present, with a tempo marking of quarter note = 52.

330

38

Picc.

Fl. 1

Fl. 2

Ob. 1

Ob. 2

E. Hn.

B. Cl. 1

B. Cl. 2

B. Cl.

Bsn. 1

Bsn. 2

C. Bn.

3

4

f

f

f

f

mf

p

p

p

p

38

Hn. 1-2

Hn. 3-4

C Tpt.

C Tpt.

Tbn.

Tbn. 3-4

Tuba

Timp.

C.

Sn. dr.

Cym.

f

mf

ff

p

f

mf

ff



Hp.

Pno.

3

4

38

V. 1.

V. 2.

Vla.

Vel.

D.B.

ff

pp

pp

pp

ff

arco

pizz.

arco

pizz.

39

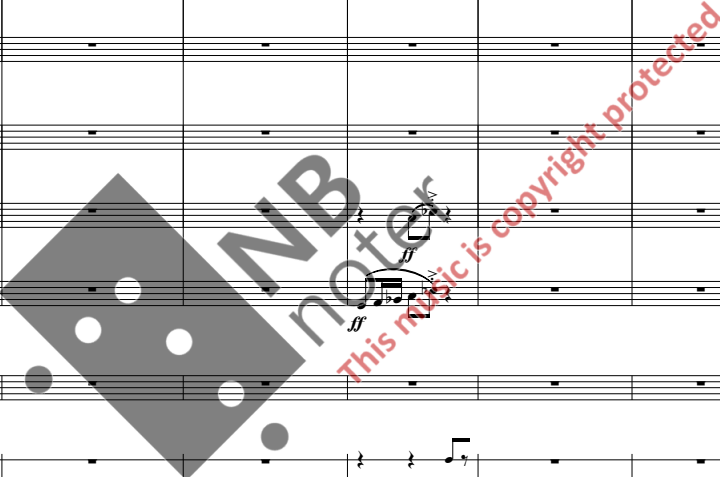
Picc. Fl. 1 Fl. 2 Ob. 1 Ob. 2 E. Hn. B. Cl. 1 B. Cl. 2 B. Cl. Bsn. 1 Bsn. 2 C. Bn.

39

Hn. 1-2 Hn. 3-4 C Tpt. C Tpt. Tbn. Tbn. 3-4 Tuba Timp. C. Sn. dr. Cym. Hp. Pno.

39

V. 1. V. 2. Vla. Vel. D.B.



40 41

Picc. Fl. 1 Fl. 2 Ob. 1 Ob. 2 E. Hn. B. Cl. 1 B. Cl. 2 B. Cl. Bsn. 1 Bsn. 2 C. Bn.

40 41

Hn. 1-2 Hn. 3-4 C. Tpt. C. Tpt. Tbn. Tbn. 3-4 Tuba Timp. C. Sn. dr. Cym. Hp. Pno.

40 41

V. I. V. II. Vla. Vel. D.B.

NB noter
This music is copyright protected

365 42

Picc. *mf* *ff*

Fl. 1 *mf* *ff*

Fl. 2 *mf* *ff*

Ob. 1 *mf* *ff*

Ob. 2 *mf* *ff*

E. Hn. *mf* *ff*

B. Cl. 1 *mf* *ff*

B. Cl. 2 *mf* *ff*

B. Cl. *f* *p* *f* *ff*

Bsn. 1 *ff*

Bsn. 2 *ff*

C. Bn.

42

Hn. 1-2

Hn. 3-4

C Tpt.

C Tpt.

Tbn.

Tbn. 3-4

Tuba

Timp.

C.

Sn. dr.

Cym.

Hp.

Pno. *f* *ff*

42

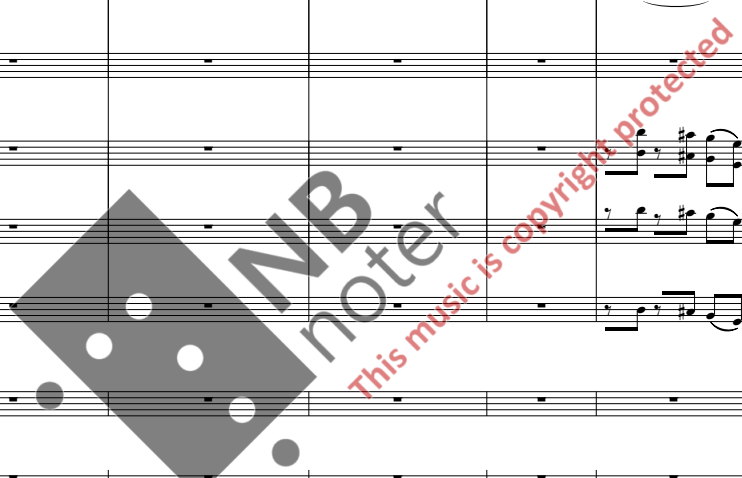
V. 1.

V. 2.

Vla.

Vel. *f* *ff*

D.B. *arco* *ff*



375 43

Picc. *mf* *f* *f*

Fl. 1 *mf* *f* *f*

Fl. 2 *mf* *f* *f*

Ob. 1 *f*

Ob. 2 *f*

E. Hn. *f*

B. Cl. 1 *f* *f* *f*

B. Cl. 2 *f* *f* *f*

B. Cl. *f*

Bsn. 1 *f* *p*

Bsn. 2 *f* *p*

C. Bn. *p*

Hn. 1-2 *f* *f*

Hn. 3-4 *f* *f*

C Tpt. *f*

C Tpt. *f*

Tbn. *f*

Tbn. 3-4 *f*

Tuba *f*

Timp. *f* *fp*

C. *f*

Sn. dr. *f*

Cym. *f*

Hp.

Pno.

V. 1. *mf* *f* *p*

V. 2. *mf* *f* *p*

Vla. *f* *p*

Vel. *f* *p*

D.B. *f* *p*

43



388

Picc. *f*

Fl. 1 *ff*

Fl. 2 *ff*

Ob. 1 *ff*

Ob. 2 *ff*

E. Hn.

B. Cl. 1 *ff*

B. Cl. 2 *ff*

B. Cl.

Bsn. 1

Bsn. 2

C. Bn.

Hn. 1-2

Hn. 3-4

C Tpt.

C Tpt.

Tbn.

Tbn. 3-4

Tuba

Timp.

C.

Sn. dr.

Cym.

Hp.

Pno. *f*

V. I. *f* *pp*

V. 2 *f* *pp*

Vla. *f* *pp*

Vel. *f* *pp*

D.B. *f* *pp*

44

Picc. *ff*

Fl. 1 *ff*

Fl. 2 *ff*

Ob. 1 *ff*

Ob. 2 *ff*

E. Hn. *ff*

B. Cl. 1 *ff*

B. Cl. 2 *ff*

B. Cl. *ff*

Bsn. 1 *ff*

Bsn. 2 *ff*

C. Bn. *ff*

44

Hn. 1-2

Hn. 3-4

C. Tpt. *fp*

C. Tpt. *fp*

Tbn.

Tbn. 3-4

Tuba *ff*

Timp.

C.

Sn. dr.

Cym.

Hp.

Pno.

44

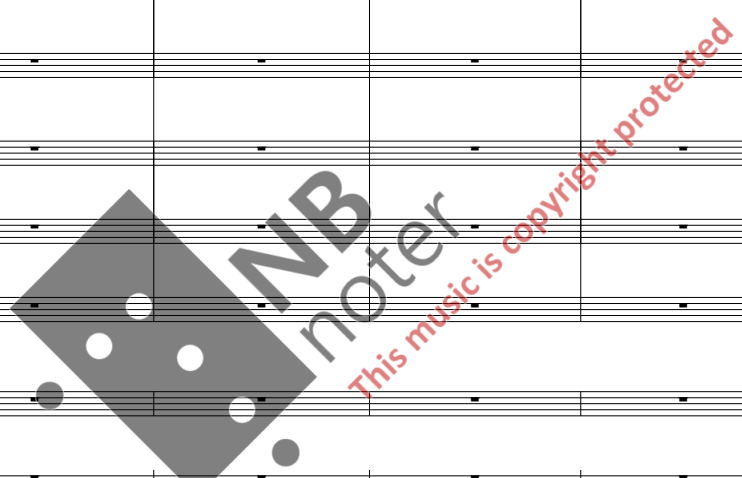
V. 1. *pp* *pp* *cresc. al [10]*

V. 2. *pp* *pp* *cresc. al [10]*

Vla. *ff* *pizz.* *pp* *arco*

Vel.

D.B.



403 45 46

Picc. *ff*

Fl. 1 *ff*

Fl. 2 *ff*

Ob. 1 *ff*

Ob. 2 *ff*

E. Hn. *ff*

B. Cl. 1 *ff*

B. Cl. 2 *ff*

B. Cl. *ff*

Bsn. 1

Bsn. 2

C. Bn.

45 46

Hn. 1-2 *ff* *p* *f*

Hn. 3-4 *ff* *p* *f*

C. Tpt. *fz* *f* solo

C. Tpt. *fz* *f*

Tbn. *fz* *f*

Tbn. 3-4 *f*

Tuba *f*

Timp. *fp*

C. *p cresc.*

Sn. dr.

Cym.

Hp.

Pno.

45 46

V. 1. *ff* dim. al [11]

V. 2. *ff* dim. al [11]

Vla. *pizz.* *f*

Vel.

D.B.

412

47

Picc.

Fl. 1

Fl. 2

Ob. 1

Ob. 2

E. Hn.

Bs. Cl. 1

Bs. Cl. 2

B. Cl.

Bsn. 1

Bsn. 2

C. Bn.

47

Hn. 1-2

Hn. 3-4

C. Tpt.

C. Tpt.

Tbn.

Tbn. 3-4

Tuba

Timp.

C.

Sn. dr.

Cym.

Hp.

Pno.

47

V. 1.

V. 2.

Vla.

Vel.

D.B.

421

48 49

Picc.

Fl. 1

Fl. 2

Ob. 1

Ob. 2

E. Hn.

B. Cl. 1

B. Cl. 2

B. Cl.

Bsn. 1

Bsn. 2

C. Bn.

48 49

Hn. 1-2

Hn. 3-4

C Tpt.

C Tpt.

Tbn.

Tbn. 3-4

Tuba

Timp.

C.

Sn. dr.

Cym.

Hp.

Pno.

48 49

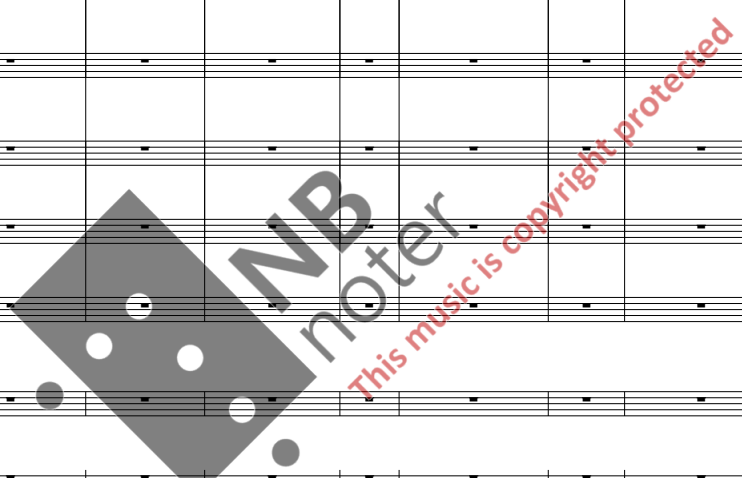
V. 1.

V. 2.

Vla.

Vel.

D.B.



434

50

Picc.

Fl. 1

Fl. 2

Ob. 1

Ob. 2

E. Hn.

Bs. Cl. 1

Bs. Cl. 2

B. Cl.

Bsn. 1

Bsn. 2

C. Bn.

50

Hn. 1-2

Hn. 3-4

C. Tpt.

C. Tpt.

Tbn.

Tbn. 3-4

Tuba

Timp.

C.

Sn. dr.

Cym.

Hp.

Pno.

50

V. 1.

V. 2.

Vla.

Vel.

D.B.

445 51

Picc.

Fl. 1

Fl. 2

Ob. 1

Ob. 2

E. Hn.

B. Cl. 1

B. Cl. 2

B. Cl.

Bsn. 1

Bsn. 2

C. Bn.

Hn. 1-2

Hn. 3-4

C. Tpt.

C. Tpt.

Tbn.

Tbn. 3-4

Tuba

Timp.

C.

Sn. dr.

Cym.

Hp.

Pno.

51

V. I.

V. 2

Vla.

Vel.

D.B.

This music is copyright protected

NB noter

460

52

Picc.
Fl. 1
Fl. 2
Ob. 1
Ob. 2
E. Hn.
B♭ Cl. 1
B♭ Cl. 2
B. Cl.
Bsn. 1
Bsn. 2
C. Bn.

52

Hn. 1-2
Hn. 3-4
C. Tpt.
C. Tpt.
Tbn.
Tbn. 3-4
Tuba
Timp.
C.
Sn. dr.
Cym.
Hp.
Pno.

52

V. I.
V. 2.
Vla.
Vcl.
D.B.

474 53 54

Picc. *ff*

Fl. 1 *f* *ff*

Fl. 2 *f* *ff*

Ob. 1 *ff*

Ob. 2 *ff*

E. Hn. *f* *ff*

B♭ Cl. 1 *f* *ff* 4 3

B♭ Cl. 2 *f* *ff* 4 4

B. Cl. *mf cresc.* *ff*

Bsn. 1 *f* *ff*

Bsn. 2 *f* *ff*

C. Bn. *f* *ff*

53 54

Hn. 1-2

Hn. 3-4

C Tpt.

C Tpt.

Tbn.

Tbn. 3-4

Tuba

Timp.

C.

Sn. dr.

Cym.

Db, Cb, B - E, F, G, A

Hp. *ff*

Pno. *f* 4 3 4 4

53 54

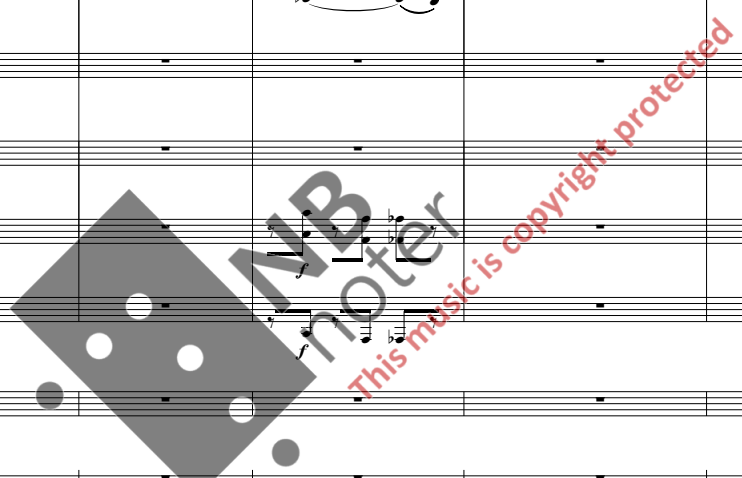
V. 1. *ff* *pp* *f* *pp* *p*

V. 2. *ff* *pp* *f* *pp*

Vla. *ff* *pp* *f* *pp*

Vel. *ff* *pp* *f* *pp* *p*

D.B. *ff* *pp* *f* *pp* *p* arco *f*



484

55

Picc.

Fl. 1

Fl. 2

Ob. 1

Ob. 2

E. Hn.

B. Cl. 1

B. Cl. 2

B. Cl.

Bsn. 1

Bsn. 2

C. Bn.

55

Hn. 1-2

Hn. 3-4

C Tpt.

C Tpt.

Tbn.

Tbn. 3-4

Tuba

Timp.

C.

Sn. dr.

Cym.

Hp.

Pno.

55

V. 1.

V. 2.

Vla.

Vel.

D.B.

496 56

Picc.

Fl. 1

Fl. 2

Ob. 1

Ob. 2

E. Hn.

B♭ Cl. 1

B♭ Cl. 2

B. Cl.

Bsn. 1

Bsn. 2

C. Bn.

Hn. 1-2

Hn. 3-4

C. Tpt.

C. Tpt.

Tbn.

Tbn. 3-4

Tuba

Timp.

C.

Sn. dr.

Cym.

Hp.

Pno.

56

V. 1.

V. 2.

Vla.

Vel.

D.B.

This music is copyright protected

507 57

Picc. *ff*

Fl. 1 *ff*

Fl. 2 *ff*

Ob. 1

Ob. 2

E. Hn.

B♭ Cl. 1 *ff* 2 3

B♭ Cl. 2 4 4

B. Cl. 4 4

Bsn. 1 *ff*

Bsn. 2 *ff*

C. Bn.

Hn. 1-2 *cresc.* *f* 57

Hn. 3-4 *cresc.* *f* *ff*

C Tpt.

C Tpt.

Tbn.

Tbn. 3-4

Tuba

Timp. *p*

C.

Sn. dr.

Cym.

Hp.

Pno. *f* 2 3 *ff* 2 3

4 4

57

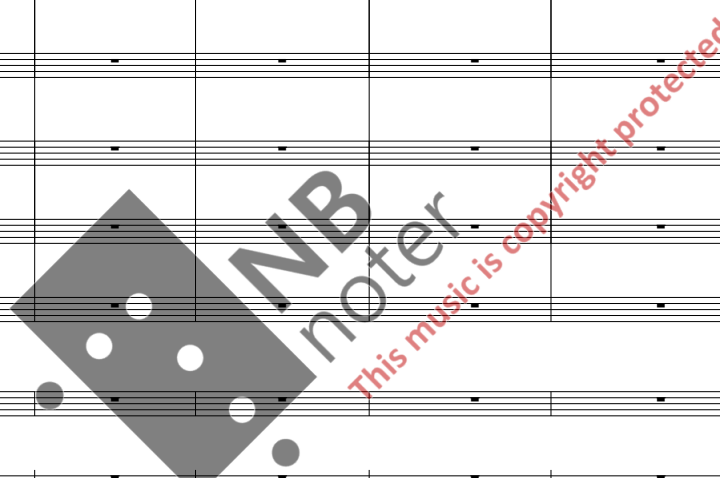
V. 1. *p cresc.* *f* *f* *ff*

V. 2. *pp* *p cresc.* *f* *f* *ff*

Vla. *pp* *p cresc.* *f* *f* *ff*

Vel. *pp* *p cresc.* *f* *f* *ff*

D.B. *p cresc.* *f* *f* *ff*



519 58 59

Picc. *f*

Fl. 1 *f*

Fl. 2 *f*

Ob. 1

Ob. 2

E. Hn.

B. Cl. 1 *f*

B. Cl. 2 *f*

B. Cl. *pp*

Bsn. 1

Bsn. 2

C. Bn.

Hn. 1-2 58 59

Hn. 3-4 *p* *ff* *p* *pp*

C. Tpt. *f* con sord.

C. Tpt.

Tbn.

Tbn. 3-4

Tuba

Timp. *p*

C.

Sn. dr.

Cym.

Hp. *ff*

Pno. *f*

V. I. 58 59 *ff* *pp*

V. 2 *ff* *pp*

Vla. *sul pont.* *pp* *pp*

Vel. *sul pont.* *pp*

D.B.

533

Picc. *f*

Fl. 1 *f*

Fl. 2

Ob. 1 *f*

Ob. 2 *f*

E. Hn. *f*

B. Cl. 1

B. Cl. 2

B. Cl. *f*

Bsn. 1 *p* *f*

Bsn. 2 *p* *f* *cresc.*

C. Bn. *f* *cresc.*

Hn. 1-2 *sf*

Hn. 3-4 *sf*

C. Tpt. *sf*

C. Tpt.

Tbn. *f* *cresc.*

Tbn. 3-4 *p* *f* *cresc.*

Tuba *f*

Timp. *f* *cresc.*

C.

Sn. dr. *pp* *cresc.*

Cym.

Hp.

Pno.

V. 1. *cresc.*

V. 2. *cresc.* *sf*

Vla. *cresc.*

Vel. *f* *cresc.*

D.B. *arco* *pizz.* *mf*

60

G.P. G.P.

543 Picc. Fl. 1 Fl. 2 Ob. 1 Ob. 2 E. Hn. B. Cl. 1 B. Cl. 2 B. Cl. Bsn. 1 Bsn. 2 C. Bn.

60

G.P. G.P.

Hn. 1-2 Hn. 3-4 C. Tpt. C. Tpt. Tbn. Tbn. 3-4 Tuba Timp. C. Sn. dr. Cym.

60

G.P. G.P.

V. 1 V. 2 Vla. Vel. D. B.

arco

II "Oblivion"

♩ = 42

Picc. *pp*

Fl. 1 *pp*

Fl. 2

Ob. 1

Ob. 2

E. Hn.

B. Cl. 1 **4**

B. Cl. 2 **4**

B. Cl. *pp*

Bsn. 1 *pp*

Bsn. 2 *pp*

C. Bn. *pp*

♩ = 42

Hn. 1-2

Hn. 3-4

C. Tpt. *p*

C. Tpt. *p*

Tbn.

Tbn. 3-4

Tuba

Timp. *pp sfz* *p* *cresc.*

C.

Sn. dr. *sfz*

Cym.

Hp.

4

Pno.

♩ = 42

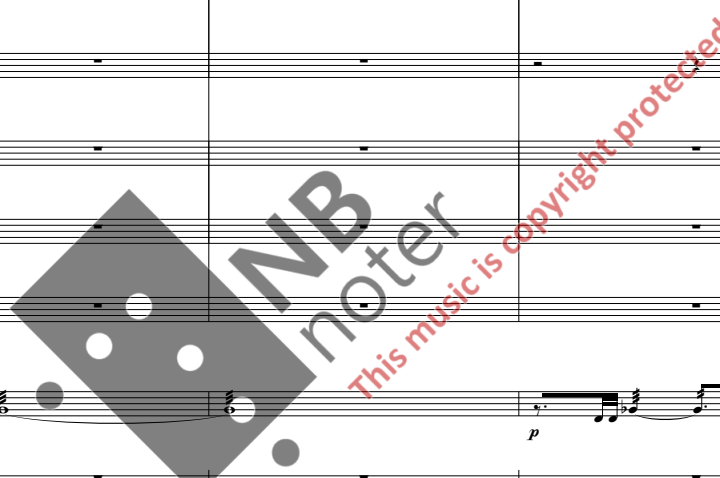
V. 1. *pp* *sul pont.*

V. 2. *pp* *pizz.* *pp* *sul pont.* *pp* *pizz.* *pp*

Vla. *pp* *p* *ppp* *p*

Vel. *ppp* *p* *ppp*

D.B. *ppp* *div a3* *pp* *ppp* *pizz.* *pp*



1

Picc. Fl. 1 Fl. 2 Ob. 1 Ob. 2 E. Hn. B. Cl. 1 B. Cl. 2 B. Cl. Bsn. 1 Bsn. 2 C. Bn.

pp

1

Hn. 1-2 Hn. 3-4 C. Tpt. C. Tpt. Tbn. Tbn. 3-4 Tuba Timp. C. Sn. dr. Cym. Hp. Pno.

pp

1

V. I. V. 2 Vla. Vel. D.B.

cresc. p tutti arco pp

15

2

Picc. *pp* *cresc.*

Fl. 1 *pp* *cresc.*

Fl. 2 *pp* *cresc.*

Ob. 1 *pp* *cresc.*

Ob. 2 *pp* *cresc.*

E. Hn. *pp* *cresc.*

B. Cl. 1 *pp* *cresc.*

B. Cl. 2 *pp* *cresc.*

B. Cl. *pp* *cresc.*

Bsn. 1 *pp* *cresc.*

Bsn. 2 *pp* *cresc.*

C. Bn. *pp* *cresc.*

2

Hn. 1-2

Hn. 3-4

C Tpt.

C Tpt.

Tbn.

Tbn. 3-4

Tuba

Timp.

C.

Sn. dr.

Cym.

Hp.

Pno.

2

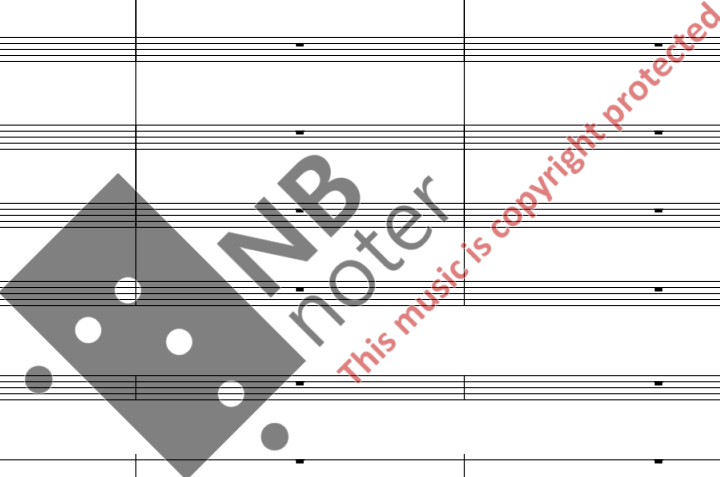
V. I.

V. 2

Vla. *fp*

Vel.

D.B.



20

Picc. *ff* *dim.*

Fl. 1 *ff* *dim.*

Fl. 2 *ff* *dim.*

Ob. 1 *ff* *dim.*

Ob. 2 *ff* *dim.*

E. Hn. *ff* *dim.*

B. Cl. 1 *ff*

B. Cl. 2 *ff*

B. Cl. *dim.*

Bsn. 1 *dim.*

Bsn. 2 *dim.*

C. Bn. *ff* *dim.*

Hn. 1-2

Hn. 3-4

C Tpt.

C Tpt.

Tbn.

Tbn. 3-4

Tuba

Timp. *mp cresc.* *f dim.*

C.

Sn. dr.

Cym.

Hp.

Pno.

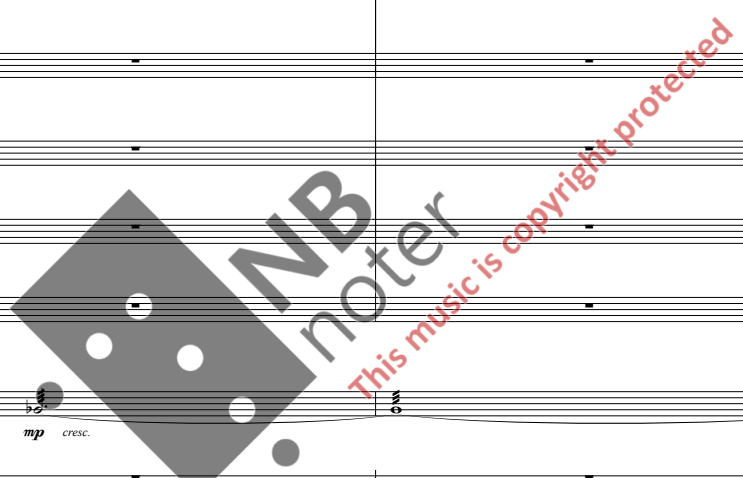
V. I.

V. 2

Vla.

Vel.

D.B.



24 3

Picc. *p* *pp*

Fl. 1 *pp*

Fl. 2 *pp*

Ob. 1

Ob. 2

E. Hn. *pp* *p*

B. Cl. 1 *pp*

B. Cl. 2 *pp* *p*

B. Cl.

Bsn. 1 *p* *p*

Bsn. 2 *p*

C. Bn. *p*

3

Hn. 1-2 *pp* *p*

Hn. 3-4 *pp* *f*

C Tpt.

C Tpt.

Tbn.

Tbn. 3-4

Tuba

Timp.

C.

Sn. dr.

Cym.

Hp.

Pno.

3

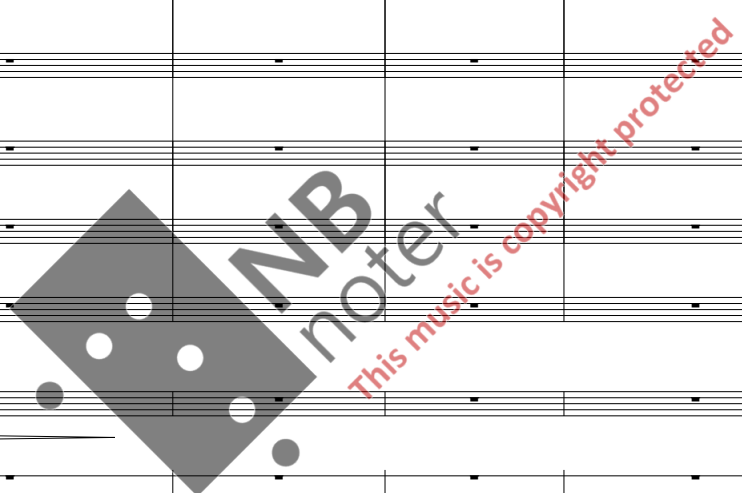
V. 1. *ppp* *f*

V. 2. *ppp*

Vla. *pp*

Vel. *ppp* *tutti* *solo pp*

D.B. *div.* *tutti* *ppp*



4

Picc.

Fl. 1

Fl. 2

Ob. 1

Ob. 2

E. Hn.

B. Cl. 1 *pp*

B. Cl. 2 *pp*

B. Cl.

Bsn. 1 *solo* *p*

Bsn. 2 *p*

C. Bn. *p*

4

Hn. 1-2 *pp*

Hn. 3-4

C. Tpt.

C. Tpt.

Tbn. *fp*

Tbn. 3-4 *fp*

Tuba *p*

Timp.

C.

Sn. dr.

Cym.

Hp.

Pno.

4

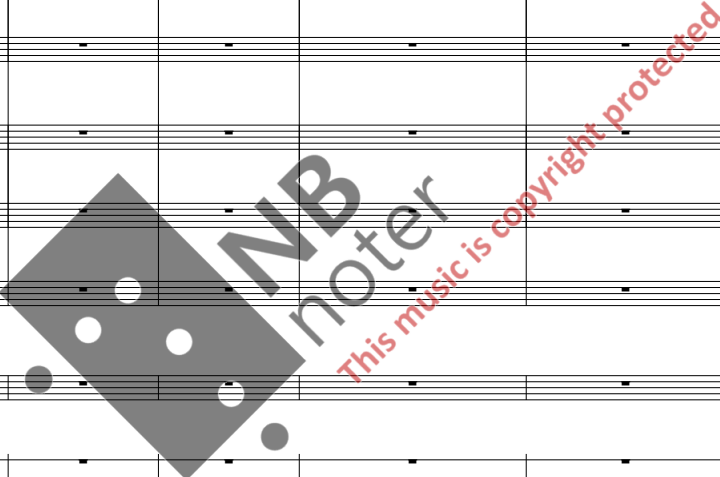
V. I. *ppp*

V. 2 *p* *pp*

Vla.

Vel.

D.B.



5

Picc. *mf* *cresc.*

Fl. 1

Fl. 2

Ob. 1

Ob. 2

E. Hn.

B♭ Cl. 1

B♭ Cl. 2

B. Cl. *f* *ff*

Bsn. 1 *mp* *cresc.* *ff*

Bsn. 2 *p* *cresc.* *ff*

C. Bn. *p* *cresc.* *ff*

5

Hn. 1-2 *pp* *cresc.* *f*

Hn. 3-4 *pp* *f*

C Tpt.

C Tpt.

Tbn.

Tbn. 3-4

Tuba *mp* *f*

Timp. *pp* *cresc.* *ff*

C.

Sn. dr.

Cym.

Hp.

Pno.

5

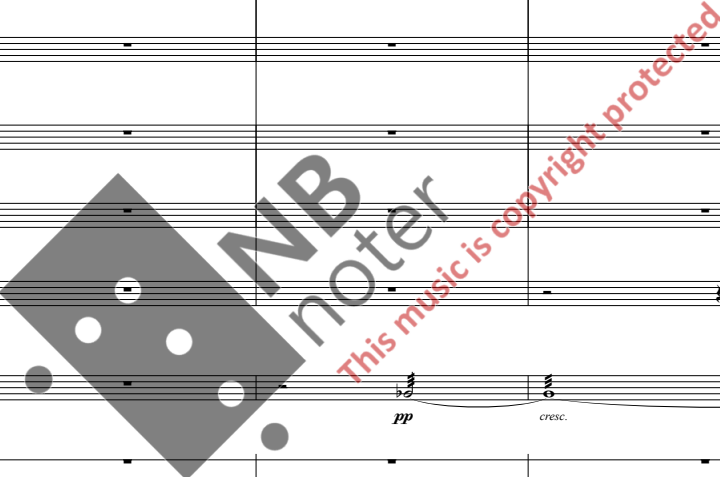
V. 1. *p* *cresc.* *mp* *cresc.* *ff*

V. 2. *mp* *cresc.* *ff*

Vla. *pp* *sul pont.* *pp* *sul pont.* *pp* *cresc.* *ff*

Vel. *tutti* *cresc.* *ff*

D.B. *cresc.* *ff*



50 **6**

Picc. *pp* *pp*

Fl. 1 *pp* *pp*

Fl. 2 *pp* *pp*

Ob. 1 *pp*

Ob. 2

E. Hn. *mp* *mp*

B. Cl. 1 *pp* *p*

B. Cl. 2 *pp* *p*

B. Cl. *pp* *p*

Bsn. 1 *p*

Bsn. 2 *p*

C. Bn. *p*

6

Hn. 1-2

Hn. 3-4 *p*

C. Tpt.

C. Tpt.

Tbn.

Tbn. 3-4

Tuba

Timp.

C.

Sn. dr.

Cym.

Hp.

Pno. *3* *4*

6

V. I. *p* *pp* *pp*

V. 2 *pp* *pppp*

Vla. *pp* *pp*

Vel. *pp* *p* *pp*

D.B. *pp* *pizz.* *pp* *tutti* *arco*

This music is copyright protected

7 $\text{♩} = 84$ $\text{♩} = 42$ 8

Picc. *mp* *ff*

Fl. 1 *mp* *ff*

Fl. 2 *mp* *ff*

Ob. 1 *ff*

Ob. 2 *ff*

E. Hn. *ff*

Bs. Cl. 1 *f* *ff*

Bs. Cl. 2 *ff*

B. Cl. *ff*

Bsn. 1 *ff*

Bsn. 2 *ff*

C. Bn. *ff*

7 $\text{♩} = 84$ $\text{♩} = 42$ 8

Hn. 1-2 *ff*

Hn. 3-4 *ff*

C Tpt. *ff*

C Tpt. *ff*

Tbn. *fz* *ff*

Tbn. 3-4 *fz* *ff*

Tuba *ff*

Timp.

C.

Sn. dr.

Cym.

D.C.Bb - E.F.G.Ab

Hp. *ff* *p*

Pno. *ff*

7 $\text{♩} = 84$ $\text{♩} = 42$ 8

V. 1. *mf* *ff* *ppp*

V. 2. *ff* *ppp*

Vla. *f* *ff*

Vel. *f* *ff*

D.B. *ff*

66

Picc.

Fl. 1

Fl. 2

Ob. 1

Ob. 2

E. Hn.

B♭ Cl. 1

B♭ Cl. 2

B. Cl.

Bsn. 1

Bsn. 2

C. Bn.

Hn. 1-2

Hn. 3-4

C Tpt.

C Tpt.

Tbn.

Tbn. 3-4

Tuba

Timp.

C.

Sn. dr.

Cym.

Hp.

Pno.

V. I.

V. 2

Vla.

Vel.

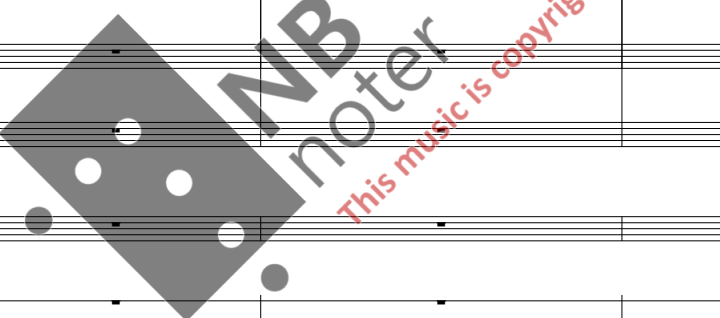
D.B.

pp

fp

tutti arco

pp



9

Picc. *pp* *cresc.* *ff*

Fl. 1 *pp* *cresc.* *ff*

Fl. 2 *pp* *cresc.* *ff*

Ob. 1 *ff*

Ob. 2 *ff*

E. Hn. *pp* *cresc.* *ff*

Bs. Cl. 1 *pp* *cresc.* *ff*

Bs. Cl. 2 *pp* *cresc.* *ff*

B. Cl. *pp* *cresc.* *ff* *dim.*

Bsn. 1 *pp* *cresc.* *ff* *dim.*

Bsn. 2 *cresc.* *ff* *dim.*

C. Bn. *cresc.* *ff* *dim.*

9

Hn. 1-2

Hn. 3-4

C Tpt.

C Tpt.

Tbn.

Tbn. 3-4

Tuba

Timp. *mp* *cresc.*

C.

Sn. dr.

Cym.

Hp.

Pno.

9

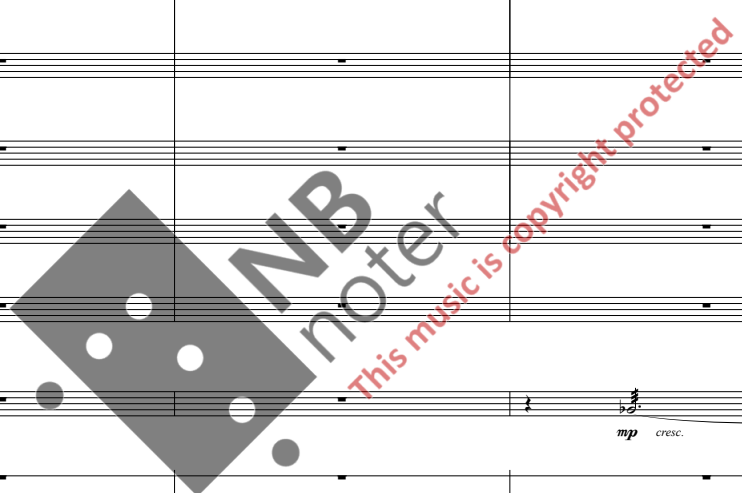
V. 1.

V. 2.

Vla.

Vel.

D.B.



10

77

Picc. *dim.* *pp*

Fl. 1 *dim.* *pp*

Fl. 2 *dim.* *pp*

Ob. 1 *dim.*

Ob. 2 *dim.*

E. Hn. *dim.* *pp* *p*

B. Cl. 1 *pp*

B. Cl. 2 *pp* *p*

B. Cl. *p*

Bsn. 1 *p* *p*

Bsn. 2 *p*

C. Bn. *p*

10

Hn. 1-2 *pp* *cresc.* *pp* *p*

Hn. 3-4 *pp* *cresc.* *p*

C. Tpt.

C. Tpt.

Tbn.

Tbn. 3-4

Tuba

Timp. *f* *dim.*

C.

Sn. dr.

Cym.

Hp.

Pno.

10

V. 1.

V. 2.

Vla.

Vel. *tutti* *pppp*

D.B. *div.* *pppp*

11

83

Picc.

Fl. 1

Fl. 2

Ob. 1

Ob. 2

E. Hn.

B♭ Cl. 1

B♭ Cl. 2

B. Cl.

Bsn. 1

Bsn. 2

C. Bn.

11

Hn. 1-2

Hn. 3-4

C Tpt.

C Tpt.

Tbn.

Tbn. 3-4

Tuba

Timp.

C.

Sn. dr.

Cym.

Hp.

Pno.

11

V. 1.

V. 2.

Vla.

Vel.

D.B.

102

13

Picc. *mf* *cresc.*

Fl. 1

Fl. 2 *pp*

Ob. 1

Ob. 2

E. Hn. *mp* *solo*

B♭ Cl. 1

B♭ Cl. 2

B. Cl. *f* *ff* *pp*

Bsn. 1 *mp* *cresc.* *ff*

Bsn. 2 *ff*

C. Bn. *ff*

13

Hn. 1-2 *f*

Hn. 3-4 *f*

C Tpt.

C Tpt.

Tbn.

Tbn. 3-4

Tuba *mp* *f*

Timp. *cresc.* *ff*

C.

Sn. dr.

Cym.

Hp.

Pno.

13

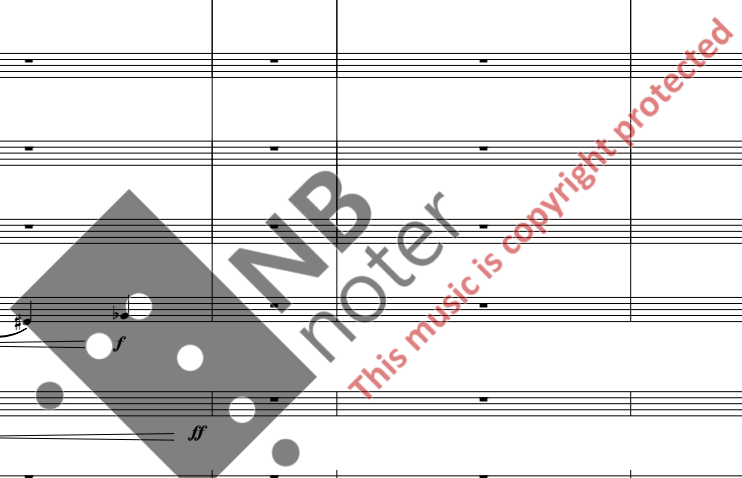
V. I. *mp* *cresc.* *ff* *p* *pp*

V. 2 *cresc.* *ff* *ppp*

Vla. *ff* *pp*

Vel. *ff* *pp*

D.B. *ff* *pizz.* *p* *pp*



14

108

Picc. Fl. 1 Fl. 2 Ob. 1 Ob. 2 E. Hn. B. Cl. 1 B. Cl. 2 B. Cl. Bsn. 1 Bsn. 2 C. Bn.

14

Hn. 1-2 Hn. 3-4 C. Tpt. C. Tpt. Tbn. Tbn. 3-4 Tuba Timp. C. Sn. dr. Cym.

14

V. 1. V. 2. Vla. Vel. D.B.



116

Picc.

Fl. 1

Fl. 2

Ob. 1

Ob. 2

E. Hn.

Bs. Cl. 1

Bs. Cl. 2

B. Cl.

Bsn. 1

Bsn. 2

C. Bn.

Hn. 1-2

Hn. 3-4

C Tpt.

C Tpt.

Tbn. 3-4

Tuba

Timp.

C.

Sn. dr.

Cym.

Hp.

Pno.

V. 1.

V. 2.

Vla.

Vel.

D.B.

mp

pp

p

ff

con sord.

3

6

This music is copyright protected

121 15

Picc. *mp*

Fl. 1 *mp*

Fl. 2 *mp*

Ob. 1 *mp*

Ob. 2 *mp*

E. Hn. *p*

B♭ Cl. 1

B♭ Cl. 2

B. Cl. *6*

Bsn. 1

Bsn. 2

C. Bn.

15

Hn. 1-2

Hn. 3-4

C Tpt. *pp*

C Tpt. *pp*

Tbn. *pp*

Tbn. 3-4 *pp*

Tuba

Timp.

C.

Sn. dr.

Cym.

Hp.

Pno.

15

V. 1.

V. 2.

Vla.

Vel.

D.B.

125

Picc. Fl. 1 Fl. 2 Ob. 1 Ob. 2 E. Hn. B. Cl. 1 B. Cl. 2 B. Cl. Bsn. 1 Bsn. 2 C. Bn. Hn. 1-2 Hn. 3-4 C. Tpt. C. Tpt. Tbn. Tbn. 3-4 Tuba Timp. C. Sn. dr. Cym. Hp. Pno. V. 1 V. 2 Vla. Vel. D.B.

16

130

Picc. *p*

Fl. 1

Fl. 2

Ob. 1

Ob. 2

E. Hn.

B♭ Cl. 1

B♭ Cl. 2

B. Cl.

Bsn. 1

Bsn. 2

C. Bn.

mp

pp

fp

16

Hn. 1-2

Hn. 3-4

C Tpt.

C Tpt.

Tbn.

Tbn. 3-4

Tuba

Timp.

C.

Sn. dr.

Cym.

Hp.

Pno.

senza sord.

f

f

f

f

f

f

mp

f

arp.

f

16

V. 1.

V. 2.

Vla.

Vel.

D.B.

fp

fp

fp

solo

mp

fp

arco

fp

