

♩ = 52 MM

RECUERDOS DE EL OMBRE

FLAUTO (Do)

OBOE

CLARINETOS

FAGOTTO

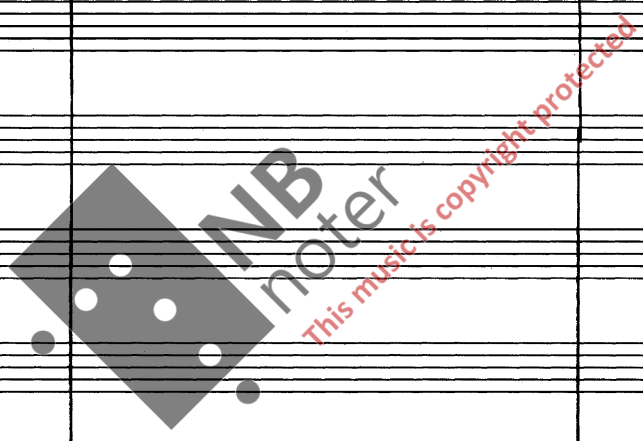
CORNO (FA)

TROMBA (Do)

TROMBONE TEN.

ARPA

♩ = 52 MM



PIANOFORTE

CHITARRA

VIOLINO I.

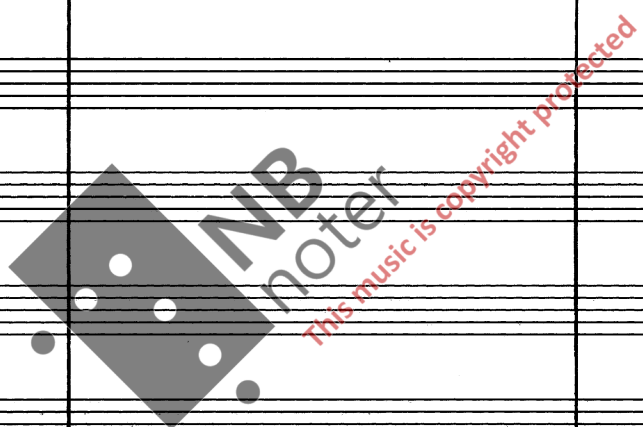
VIOLINO II.

VIOLA

VIOLONCELLO

CONTRABASSO

Handwritten musical score for Piano Forte, Guitar, Violino I, Violino II, Viola, Violoncello, and Contrabbasso. The score is divided into three measures. The Piano Forte part is mostly blank. The Guitar part shows chords and fingerings (e.g., 5, 4, 3, 2, 1, 0) with measure numbers 36, 32, 38, 32, 38, 40. The Violino I and II parts show bowing patterns with measure numbers 30 and 32. The Viola, Violoncello, and Contrabbasso parts are blank.



FL.



OB.



CL.



Fg.



Cor.



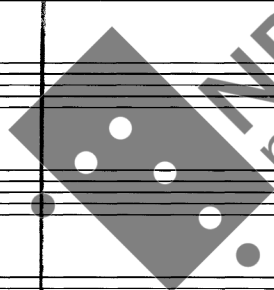
TR.



TRB.



Pf.



This music is copyright protected

P₂

AR.

PF.

CHIT.

VN.I

VN.II

VLA.

VC.

This page contains a handwritten musical score for a chamber ensemble. The score is organized into systems for the following instruments: P₂, AR., PF., CHIT., VN.I, VN.II, VLA., and VC. The notation is primarily in treble clef, with some bass clef notation for the VC. The score is divided into measures by vertical bar lines. Various musical notations are present, including notes, rests, slurs, and dynamic markings. A large, semi-transparent watermark is overlaid on the center of the page, reading "NB noter" and "this music is copyright protected".

Key features of the score include:

- CHIT. (Chamberlain):** Features several measures with notes and rests, including a measure with a 4:3 ratio and another with a 3:2 ratio.
- VN.I (Violin I):** Shows complex rhythmic patterns with slurs and a 3:2 ratio.
- VN.II (Violin II):** Features a long slur with a 3:0 ratio and a 1:10 ratio.
- VLA. (Viola):** Shows a complex rhythmic pattern with a 5:3 ratio and a 3:2 ratio.

FL.



OB.



CL.



Fg.



COR.



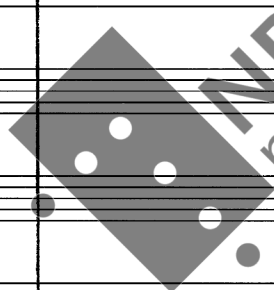
TR.



TRB.



P.1



NB
noter

This music is copyright protected

P2

Ar.

Pf.

CHT.

VN. I

VN. II

VLA.

VC.

Handwritten musical score for a chamber ensemble. The score is written on ten staves, labeled P2, Ar., Pf., CHT., VN. I, VN. II, VLA., and VC. The CHT. staff contains the most detailed notation, including notes, rests, and fingerings. The string staves (VN. I, VN. II, VLA., VC.) show sustained notes with some articulation marks. A large watermark 'NB noter' is overlaid on the center of the page.

NB
 noter
 This music is copyright protected

FL.

Handwritten musical notation for Flute (FL.) in G major, 3/4 time. The staff shows a melodic line with notes G4, A4, B4, C5, B4, A4, G4. Above the staff, there are fingerings: 1.0, 2.0, 3.0, 4.0. Below the staff, there are rhythmic markings: 0,1 0,1 0,2 0,6 and 0,8 0,1 0,1. A slur covers the first four notes, and a fermata is over the last note.

OB.

Handwritten musical notation for Oboe (OB.) in G major, 3/4 time. The staff shows a melodic line with notes G4, A4, B4, C5, B4, A4, G4. Above the staff, there are fingerings: 2.0, 3.0. Below the staff, there are rhythmic markings: (1) 33 (1). A slur covers the first three notes, and a fermata is over the last note.

CL.

Handwritten musical notation for Clarinet (CL.) in G major, 3/4 time. The staff shows a melodic line with notes G4, A4, B4, C5, B4, A4, G4. Above the staff, there are fingerings: 1.0, 2.0. Below the staff, there are rhythmic markings: 0,1 0,1 0,2 0,6 and 0,8 0,1 0,1. A slur covers the first four notes, and a fermata is over the last note.

Fg.

Handwritten musical notation for Bassoon (Fg.) in G major, 3/4 time. The staff shows a melodic line with notes G4, A4, B4, C5, B4, A4, G4. Above the staff, there are fingerings: (8.1-6), 7.0, 6.0, (5.6). Below the staff, there are rhythmic markings: 0,1 0,1 0,2 0,6 and 0,8 0,1 0,1. A slur covers the first four notes, and a fermata is over the last note.

COR.

Handwritten musical notation for Horn (COR.) in G major, 3/4 time. The staff shows a melodic line with notes G4, A4, B4, C5, B4, A4, G4. Above the staff, there are fingerings: (+) -> 0(0)+. Below the staff, there are rhythmic markings: 0,1 0,2 0,7 and 0,8 0,1 0,1. A slur covers the first four notes, and a fermata is over the last note.

TR.

Handwritten musical notation for Trumpet (TR.) in G major, 3/4 time. The staff shows a melodic line with notes G4, A4, B4, C5, B4, A4, G4. Above the staff, there are fingerings: (+) -> 0(0)+. Below the staff, there are rhythmic markings: 0,05 0,05 0,1 0,8 and 0,9 0,1. A slur covers the first four notes, and a fermata is over the last note.

TRB.

Handwritten musical notation for Trombone (TRB.) in G major, 3/4 time. The staff shows a melodic line with notes G4, A4, B4, C5, B4, A4, G4. Above the staff, there are fingerings: (+) -> 0(0)+. Below the staff, there are rhythmic markings: 0,1 0,1 0,1 0,7 and 0,9 0,1. A slur covers the first four notes, and a fermata is over the last note.

P.1

CAMPANE DI LASTRA

FREGARE CON MET:

Handwritten musical notation for Percussion (P.1) in G major, 3/4 time. The staff shows a rhythmic pattern with notes G4, A4, B4, C5, B4, A4, G4. Above the staff, there are fingerings: 1.0, 2.0. Below the staff, there are rhythmic markings: 0,1 0,1 0,2 0,6 and 0,8 0,1 0,1. A slur covers the first four notes, and a fermata is over the last note.

P.2

CAMPANE DA MANO

Arco

Handwritten musical notation for P.2, including a treble clef, a key signature of one sharp (F#), and a time signature of 3/4. The notation includes a measure with a fermata and a note with a dynamic marking of mf . Below the staff, there are rhythmic markings: $0,1 \ 0,1 \ 0,1 \ 0,7$ and a bar line with 100 .

AR.

ARCO:

Handwritten musical notation for AR., including a treble clef, a key signature of one sharp (F#), and a time signature of 3/4. The notation includes a measure with a fermata and a note with a dynamic marking of mf . Below the staff, there are rhythmic markings: $0,2 \ 0,2 \ 0,6$ and a bar line with 56 .

PF.

FREGARE CON LEGNO

Handwritten musical notation for PF., including a treble clef, a key signature of one sharp (F#), and a time signature of 3/4. The notation includes a measure with a fermata and a note with a dynamic marking of mf . Below the staff, there are rhythmic markings: $0,1 \ 0,3 \ 0,6 \ 0,8 \ 0,1 \ 0,1$ and a bar line with 77 . To the right, there are additional rhythmic markings: $13,0$, $11,0$, $8,0$, $6,0$, $5,0$, and $5,0$.

CHIT.

Handwritten musical notation for CHIT., including a treble clef, a key signature of one sharp (F#), and a time signature of 3/4. The notation includes a measure with a fermata and a note with a dynamic marking of mf . Below the staff, there are rhythmic markings: 53 , 37 , 26 , 29 , 34 , 56 , 47 , 28 , 36 , 53 , and 55 .

VN.1

Handwritten musical notation for VN.1, including a treble clef, a key signature of one sharp (F#), and a time signature of 3/4. The notation includes a measure with a fermata and a note with a dynamic marking of mf . Below the staff, there are rhythmic markings: $5,1-15$, $3,1-9$, $1,0$, 4 , $8,10$, $23,9$, $1,0$, $1,0$, $0,1 \ 0,1 \ 0,2 \ 0,6$, 98 , $0,9 \ 0,1$.

VN.2

Handwritten musical notation for VN.2, including a treble clef, a key signature of one sharp (F#), and a time signature of 3/4. The notation includes a measure with a fermata and a note with a dynamic marking of mf . Below the staff, there are rhythmic markings: $(5,1-20)$, $(3,1-18)$, $1,0$, $5,1-15$, $8,1-14$, $5,1-15$, $3,1-10$, $1,0$, $1,0$, $1,0$, $0,1 \ 0,1 \ 0,1 \ 0,7$, 94 , $0,8 \ 0,2$.

VLA.

Handwritten musical notation for VLA., including a treble clef, a key signature of one sharp (F#), and a time signature of 3/4. The notation includes a measure with a fermata and a note with a dynamic marking of mf . Below the staff, there are rhythmic markings: $(5,1-26)$, $(3,1-18)$, $1,0$, $5,1-15$, $6,1-10$, $5,1-15$, $3,1-10$, $1,0$, $1,0$, $1,0$, $0,1 \ 0,1 \ 0,1 \ 0,2 \ 0,5$, 94 , $0,8 \ 0,1 \ 0,05 \ 0,05$.

VC.

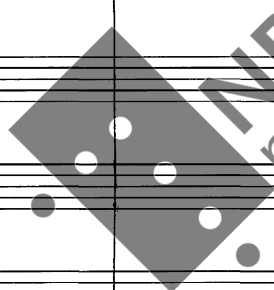
Handwritten musical notation for VC., including a treble clef, a key signature of one sharp (F#), and a time signature of 3/4. The notation includes a measure with a fermata and a note with a dynamic marking of mf . Below the staff, there are rhythmic markings: $5,1$, $5,1$, $5,1$, $3,1-12$, $3,1-10$, $3,1-12$, $1,0$, $1,0$, $1,0$, $0,1 \ 0,2 \ 0,7$, 97 .

$\frac{5}{4}$

$\frac{4}{4}$

$\frac{5}{4}$

$\frac{6}{4}$



This music is copyright protected

P2

Musical notation for P2 instrument. The top staff shows two notes with fingerings 4 and 5. The bottom staff shows two notes with a fingering of 32. There are also some scribbles and lines below the notes.

110
 396 Hz
 388 Hz
 380 Hz
 372 Hz
 364 Hz

PF.

Musical notation for PF instrument. The staff starts with a 'CON Bows' instruction and a series of notes. There are also some scribbles and lines below the notes. A measure number '34' is visible.

CHIT.

Musical notation for CHIT instrument. The staff shows notes with a 5:4 ratio indicated. There are also some scribbles and lines below the notes. Measure numbers 50, 54, 34, 42, 36, 34, 42, 36, 27 are visible.



5/4

4/4

6.

Fl.

OB.

CL.

Fg.

COR.

TR.

TRB.

Pl

(SENZA TIMBRE)

SUONO DI RIZ

SUONO DI RIZ.

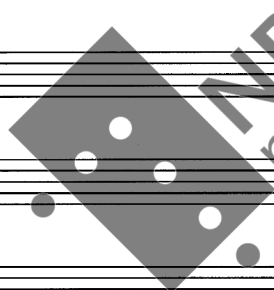
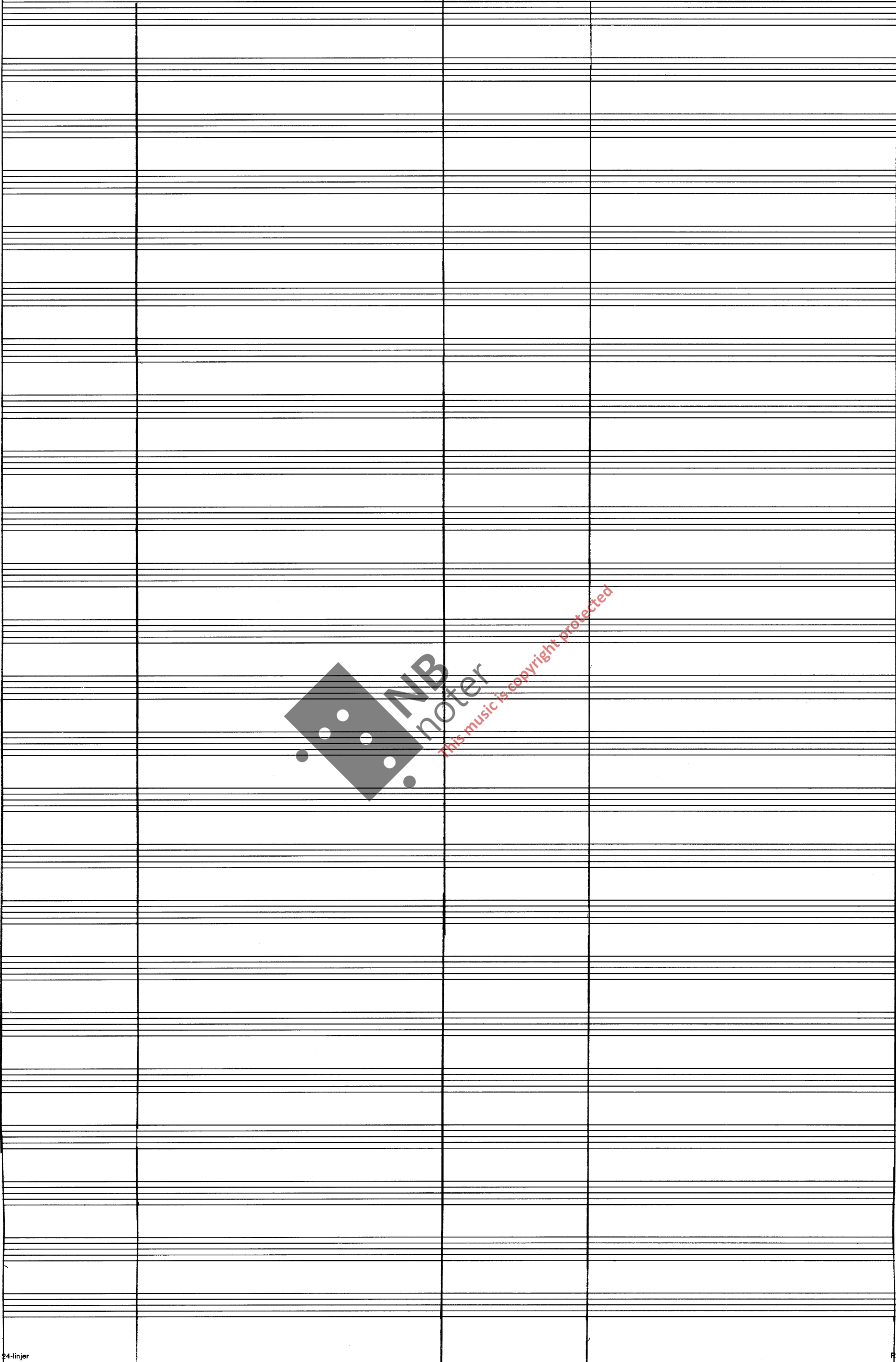
SUONO DI RIZ.

PL. MET.



Handwritten musical score for a chamber ensemble. The score is written on 24-line staves for the following instruments: P₂ (Piano 2), AR. (Arpeggiator), PF. (Piano), CHIT. (Chitarra), VN. 1 (Violin 1), VN. 2 (Violin 2), VLA. (Viola), and VC. (Violoncello). The score includes various musical notations such as notes, rests, and dynamic markings. Specific performance instructions include "Pl. MET.", "con E-Bow:", and "con E-Bows:". Measure numbers 31, 32, 33, 35, 39, 40, 42, 50, 56, and 57 are indicated. A large watermark "NB noter" is present in the center, with the text "this music is copyright protected" written diagonally across it.

4/6



NB
noter

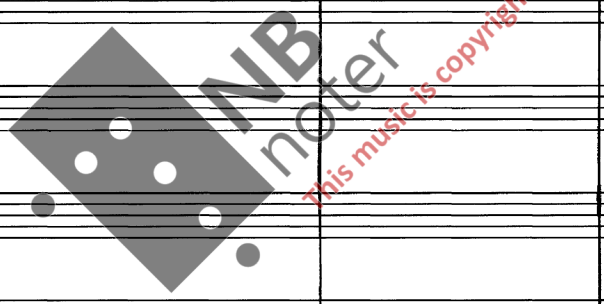
this music is copyright protected

5 → 7 → 4 → 1,3 → 7

P₂

PF.

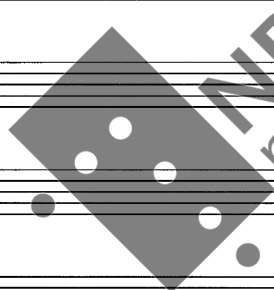
CHIT.:



4
4

5
4

8.



This music is copyright protected

P. 1

CMP. 01 LSTR. (4x)



P. 2

COMP. TUB. : (9: ■)

AR.

PF.

CHIT.



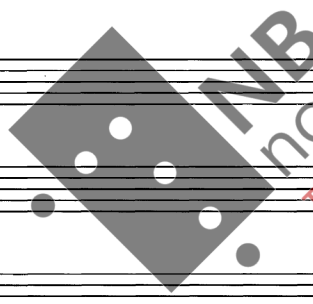
VN. 1

VN. 2

VLA.

VC.

p: cmp.
1: LSTR



NB
noter

This music is copyright protected

P2: CMP.
TUB.

AR.

PF.

VN. I

VN. II

VLA

VC

This image shows a page of handwritten musical notation for a symphony or concert band. The score is organized into systems for different instruments. At the top, there are staves for Trombone (P2: CMP. TUB.), Clarinet (AR.), and Piano (PF.). Below these are staves for Violin I (VN. I), Violin II (VN. II), Viola (VLA), and Cello (VC). The notation includes various musical symbols such as notes, rests, slurs, and dynamic markings. A large, semi-transparent watermark is overlaid on the center of the page, reading "NB noter" and "This music is copyright protected".