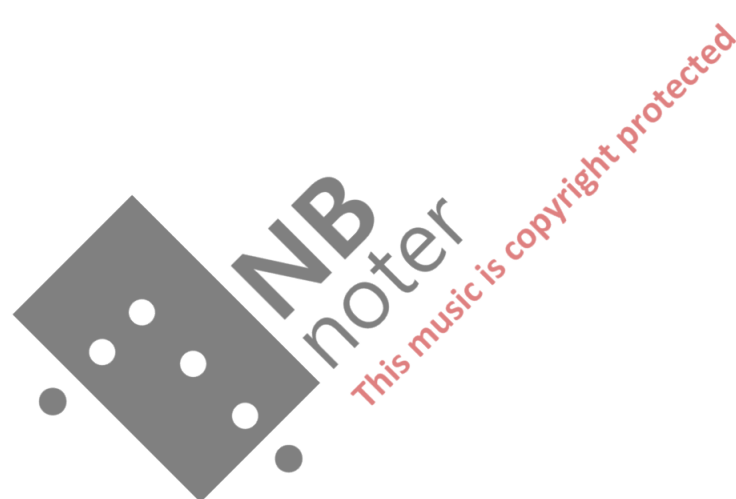


Clarinet Concerto (2009)

Jan Erik Mikalsen





Clarinete Concerto

(2009)

Jan Erik Mikalsen

Commissioned by Björn Nyman and the Norwegian Radio Orchestra.

World premiered 16 of January 2010 at Den Norske Opera og Ballett scene 2, Oslo by Björn Nyman an the Norwegian Radio Orchestra, Conductor Thomas Søndergård

I. Movement Leggero $\text{♩} = 52$

II. Movement Lontano $\text{♩} = 52$

III. Movement Lontano $\text{♩} = 46$

Orchestra:

1 Piccolo flute (doubling flute)

2 Flutes (2. doubling Alto flute in G and Piccolo flute)

1 Oboe

1 English horn

1 Clarinet in Bb (Doubling Clarinet in A (tuned a quartertone low))

1 Bass clarinet in Bb (Doubling Clarinet in Bb and Clarinet in A (tuned a quartertone low))

1 Bassoon

1 Contrabassoon

4 Horns in F

3 Trumpets in Bb

3 Trombones

1 Tuba

3 Percussions

1 Harp

1 Piano/Celesta

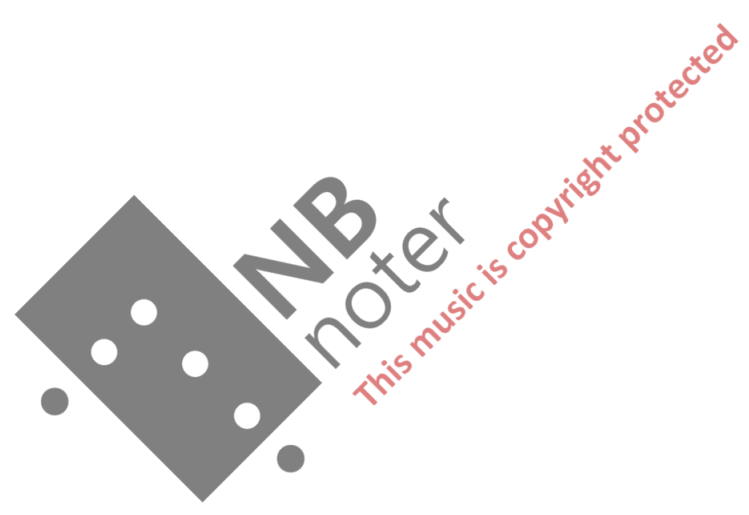
1 Harmonium

Clarinete Solo

Strings



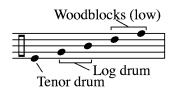
Score transposed



Percussion I:
 Marimba, Tam tam, Sleigh bells, Glass (nonspes. pitch),
 Crotales:



Set:



Cowbells:



Water gong:



Chinese gong:



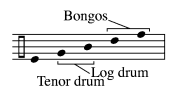
Timpani:



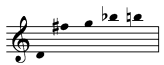
Percussion II:
 Vibraphone, Bass drum, Tam tam, Metal piece (low), suspended cymbal, Ratchet,
 Crotales:



Set:



Cowbells:



Glass:



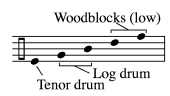
Water gong:



Percussion III:
 Tam tam (optional played on Chinese gong), Orchestral bells, Chimes, Metal piece (low), Glass (nonspes. pitch),
 Crotales:



Set:



Cowbells:



Chinese gong:



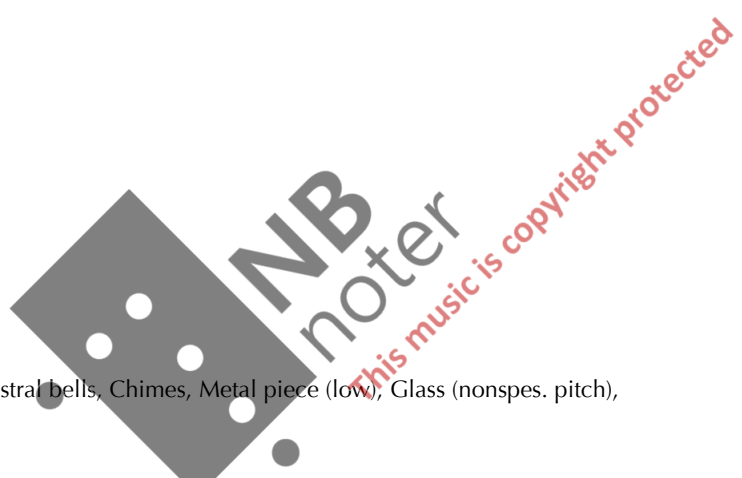
Water gong:

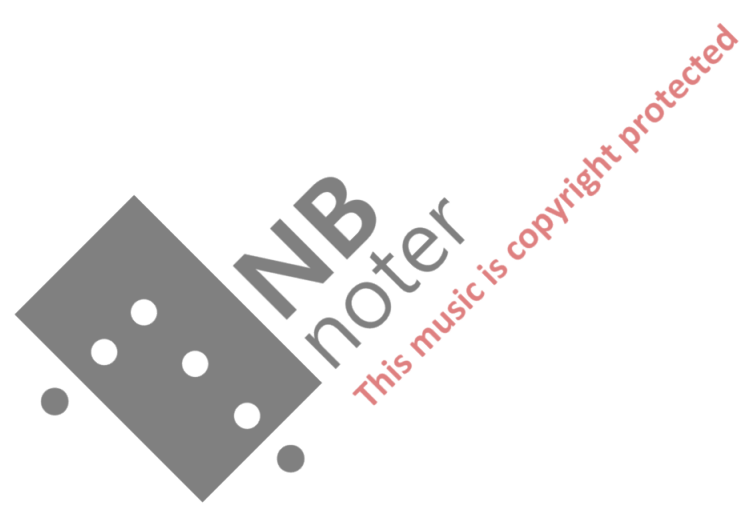


Timpani:



General explanations:
 † = Quartertone high
 ‡ = Quartertone low
 ▲ = Highest possible pitch
 ▼ = Lowest possible pitch





Clarinet Concerto I. Movement

Jan Erik Mikalsen

Leggero ♩ = 52

Flauto Piccolo
Flauti I
Flauti II
Oboe
Corno Inglese
Clarinetto in Si^b
Clarinetto Basso in Si^b
Fagotto
Contrafagotto

Corni I in Fa
Corni II in Fa
Corni III in Fa
Corni IV in Fa
Trombi I in Si^b
Trombi II e III in Si^b
Tromboni I e II
Trombona Basso
Tuba

Con sord.
Con sord.

Leggero ♩ = 52

Batteria I
Batteria II
Batteria III
Pianoforte/
Celesta
Arpa
Harmonium

Celesta:

Leggero ♩ = 52

Clarinetto Solo in Si^b
Violini I
Violini II
Viole
Violoncelli
Contrabassi

Pizz.
Pizz.

Fl. Picc. 5

Fl. I

Fl. II

Ob.

Cor. Ing.

Cl.

Cl. B.

Fg.

C. Fg.

Cr. I

Cr. II

Cor. III

Cor. IV

Tr. I

Tr. II e III

Trmb. I e II

Trmb. B.

Tabu.

Bat. I

Bat. II

Bat. III

Pf/Cel.

Hp.

Harm.

Cl. Solo in Sp.

VI. I

VI. II

Vlc. 1

Vlc. 2

Vcl. 1

Vcl. 2

Cb. 1

Cb. 2

Fl Alto:

(Poco marc.)

ppp

p

p < mp

Con sord.

Sleighbells:

Crotales:

Arco

Cow bells:

This music is copyright protected

noter

Fl. Picc. pp mf

Fl. I mp pp mf

Fl. II mp pp mf

Ob. pp mf

Cor. Ing. pp mf

Cl. pp mf

Cl. B. pp mf

Fg. pp mf

C. Fg. pp mf

Cr. I ppp p pp mf

Cr. II ppp mf

Cor. III ppp mf

Cor. IV pp mf

Tr. I Con sord. (harmon) ppp mf

Tr. II & III Con sord. (harmon) ppp mf

Trmb. I & II

Trmb. B.

Tuba

Bat. I ppp pp ppp p

Bat. II p f

Bat. III p f

Cow bells: ppp pp

Pf/Cel. p mf ppp p mp pp

Hp. mf ppp p pp mp pp

Harm. ppp p

Cl. Solo in Sp p $Pizz.$ ppp pp

Vl. I $Pizz.$ mf $Arco$ pp p

Vl. II $Pizz.$ mf $Arco$ pp p

Vlc. $Pizz.$ mf $Arco$ pp p

Vlc. $Pizz.$ mf ppp pp pp p pp

Cb. $Pizz.$ mf ppp pp pp p

Fl. Pic. *pp* *mp* *p* *mf* *ppp*

Fl. I *pp* *mp* *p* *mf* *ppp*

Fl. II *ppp*

Ob. *pp*

Cor. Ing. *pp* *mf* *ppp*

Cl. *ppp* *mf* *ppp*

Cl. B. *ppp* *mf* *ppp*

Fg. *ppp* *mf* *ppp*

C. Fg. *ppp* *mf* *ppp*

Cr. I *pp* *mp* *pp* *mf* *pp* *Senza sord.* *pp*

Cr. II *pp* *mp* *pp* *mf* *pp*

Cor. III *pp* *mp* *pp* *mf* *pp* *Senza sord.* *pp* *mp*

Cor. IV *pp* *mp* *pp* *mf* *pp*

Tr. I *pp* *p* *pp* *mp*

Tr. II e III *pp* *p* *pp* *mp*

Trmb. I e II *ppp*

Trmb. B.

Tuba

Bat. I *pp* *ppp*

Bat. II *ppp* *p* *ppp* *mp*

Bat. III *ppp* *pp* *pp* *mp*

Pfl./Cel. *p* *mp* *p* *mp* *p* *mf* *p* *mf* *f*

Hp. *p* *mp* *p* *mp* *p* *mf* *p* *mf* *f*

Harm. *pp* *p* *mf* *p*

Cl. Solo in Si *pp* *mp* *pp* *mp* *pp* *mf* *pp* *mf* *p*

Vl. I (Detache) *pp* *p* *pp* *mp* *p* *mp* *p* *mp* *p*

Vl. II (Detache) *pp* *p* *pp* *mp* *p* *mp* *p* *mp* *p*

Vcl. (Detache) *pp* *mp* *p* *mp* *p* *mp* *p* *mp*

Vcl. (Detache) *pp* *mp* *p* *mp* *p* *mp* *p* *mp*

Vcl. *pp* *p* *pp* *mp* *p* *mp* *p* *mp* *ppp* *Arco*

Vcl. *pp* *p* *ppp* *mp* *pp* *mp* *ppp* *mf* *ppp* *Arco* *Pizz.* *Arco*

Cb. *ppp* *Arco* *ppp* *mf* *ppp* *mf* *ppp*

A ♩ = 44

This page contains the musical score for the first movement, page 5. The score is divided into three systems, each starting at measure 13. The instruments and their parts are as follows:

- Woodwinds:** Flute Piccolo (Fl. Picc.), Flute I (Fl. I), Flute II (Fl. II), Oboe (Ob.), Cor Anglais (Cor. Ing.), Clarinet in E-flat (Cl. E♭), Clarinet in B-flat (Cl. B♭), Bassoon (Fg.), and Contrabassoon (C. Fg.).
- Brass:** Cornet I (Cor. I), Cornet II (Cor. II), Horn III (Cor. III), Horn IV (Cor. IV), Trumpet I (Tr. I), Trumpets II & III (Tr. II e III), Trombone I & II (Trmb. I e II), Trombone B (Trmb. B), and Tuba.
- Percussion:** Marimba, Vibrafono, and Manoforte.
- String Ensemble:** Violins I and II (VI. I, VI. II), Violas (Vlc.), Cellos (Cb.), and Double Basses (Cb.).
- Piano:** Piano (P) and Cello (Cel.).

The score includes various musical notations such as dynamics (mp, pp, f, mf, ff, p, mf), articulation (accents, slurs), and performance instructions like "Senza sord." and "Pizz." (pizzicato). A large watermark "NB noter" is visible across the center of the page.

Fl. Picc.

Fl. I

Fl. II

Ob.

Cor. Ing.

Cl.

Cl. B.

Fg.

C. Fg.

Cr. I.

Cr. II.

Cor. III.

Cor. IV.

Tr. I.

Tr. II e III.

Trmb. I e II.

Trmb. B.

Tuba.

Bat. I.

Bat. II.

Bat. III.

Pf. Cél.

Hp.

Harm.

Cl. Solo in Sb.

VI. I.

VI. II.

Vcl. 1.

Vcl. 2.

Vcl. 1.

Vcl. 2.

Cb. 1.

Cb. 2.

Fl. grande:

Gong cinese:

Arco

Pizz.

Con sord (harmon)

pp, *p*, *mp*, *mf*, *f*, *ff*

18

Fl. Picc.

Fl. I

Fl. II

Ob.

Cor. Ing.

Cl.

Cl. B.

Fg.

C. Fg.

Cr. I

Cr. II

Cor. III

Cor. IV

Tr. I
(Con sord (harmon)) (Bend down from F₃)

Tr. II e III

Trmb. I e II

Trmb. B.

Tuba

Bat. I

Bat. II
Cow bells:

Bat. III
(Gong cinese)

PF/Cel.

Hp.

Harm.

Cl. Solo in Sp.

VI. I
Pizz.

VI. II
Pizz. Arco Detaché

Vcl. 1
Flag. gliss.

Vcl. 2
Flag. gliss.

Cb. 1
Flag. gliss. Pizz.

Cb. 2
Flag. gliss. Pizz.

This music is copyright protected

MP
noter

B

Fl. Pic.
Fl. I
Fl. II
Ob.
Cor. Ing.
Cl.
Cl. B.
Fg.
C. Fg.

Cr. I
Cr. II
Cor. III
Cor. IV
Tr. I
Tr. II & III
Trmb. I & II
Trmb. B.
Tuba

Bat. I
Bat. II
Bat. III
Pf./Cel.
Hp.
Harm.

Tam tam: (Non L.v.)

Crotales:
Arco

Celesta:
PPP (Optional L.v.)

B

Cl. Solo in Sib.
VI. I
VI. II
Vlc. 1
Vlc. 2
Vlc. 1
Vlc. 2
Cb. 1
Cb. 2

Col legno

Arco

Pizz.

Non div. (Octave intonation in glissando aprox.)

Molto vibr.

B



24

Fl. Picc.

Fl. I

Fl. II

Ob.

Cor. Ing.

Cl.

Cl. B.

Fg.

C. Fg.

Cr. I

Cr. II

Cor. III

Cor. IV

Tr. I

Tr. II & III

Trmb. I & II

Trmb. B.

Tuba

Bat. I

Bat. II

Bat. III

Pf./Cel.

Harp

Harm.

Cl. Solo in Six

VI. I

VI. II

Vcl.

Vcl.

Cb.

Gran cassa:

Set:

Pianoforte:

(Tam tam)

Con sord. (Straight)

Pizz.

Arco

MIB noter

This music is copyright protected

27

Fl. Pic.

Fl. I

Fl. II

Ob.

Cor. Ing.

Cl.

Cl. B.

Fg.

C. Fg.

Cr. I

Cr. II

Cor. III

Cor. IV

Tr. I
Senza sord.

Tr. II e III
Senza sord.

Trmb. I e II

Trmb. B.

Tuba

Bat. I

Bat. II

Bat. III
Tam tam:

Celesta:

Pf/Cel.

Hp.

Harm.

Cl. Solo in Sib

VI. I

VI. II

Vle.

Vle.

Vle.

Arco

Arco

Flag gliss.

Flag gliss.

Pizz.

Pizz.

This music is copyright protected

NB noter

This page contains the musical score for the first movement, page 11. The score is divided into several systems of staves:

- Woodwinds:** Fl. Picc., Fl. I, Fl. II, Ob., Cor. Ing., Cl., Cl. B., Fg., C. Fg., Cr. I, Cr. II, Cor. III, Cor. IV, Tr. I, Tr. II e III, Trmb. I e II, Trmb. B., and Tuba.
- Percussion:** Bat. I, Bat. II, and Bat. III. The percussion parts include instructions for 'Glasses: Arco' and 'Campanelli: (Soft sticks. Resemble Celesta)'. The Marimba part is marked 'Arco'.
- Piano and Harp:** Pf/Cel. and Hp.
- String Ensemble:** Violins I and II (VI. I, VI. II), Violas (Vlc. 1, 2), Cellos (Cb. 1, 2), and Double Basses (Cb. 1, 2).
- Solo Instruments:** Cl. Solo in Si.

The score includes various musical notations such as dynamics (ppp, pp, p, mf, f), articulation (accents, slurs), and performance instructions like 'Con sord.' and 'Arco'. A large watermark 'NB noter' is overlaid diagonally across the page.

C

Fl. Picc.
Fl. I
Fl. II
Ob.
Cor. Ing.
Cl.
Cl. B.
Fg.
C. Fg.

Musical score for woodwinds and strings. Flutes I and II, Oboe, Cor Anglais, Clarinet in Bb, Bassoon, and Contrabass. Dynamics include *pp*, *mf*, and *f*.

Cr. I
Cr. II
Cor. III
Cor. IV
Tr. I
Tr. II e III
Trmb. I e II
Trmb. B.
Tuba

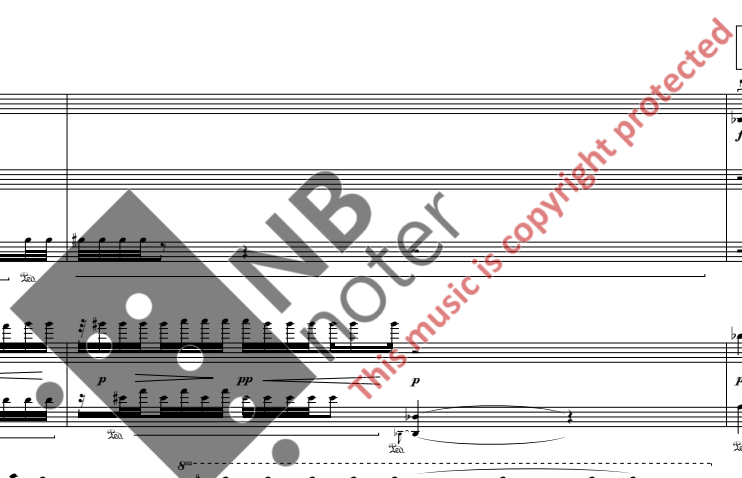
Musical score for brass instruments. Trumpets I and II, Trombones I, II, and III, and Tuba. Includes the instruction "Con sord." (Con sordina).

Bat. I
Bat. II
Bat. III
Pf/Cel.
Hp.
Harm.

Musical score for percussion. Bass Drums I, II, and III; Cymbals (Pf/Cel.); Snare Drum (Hp.); and Harmonica (Harm.).

Cl. Solo in Sp.
VI. I
VI. II
Vlc. 1
Vlc. 2
Vlc. 1
Vlc. 2
Cb. 1
Cb. 2

Musical score for strings. Solo Clarinet in Sp. (Cl. Solo in Sp.), Violins I and II, Violas, and Cellos/Double Basses. Includes instructions like "Sul pont.", "Pizz.", "Senza sord.", and "Ord.".



Cadenza

39

Fl. Picc.

Fl. I

Fl. II

Ob.

Cor. Ing.

Cl.

Cl. B.

Fg.

C. Fg.

39

Cr. I

Cr. II

Cor. III

Cor. IV

Tr. I

Tr. II e III

Trmb. I e II

Trmb. B.

Tuba

Cadenza

39

Bat. I

Bat. II

Bat. III

Pf./Cel.

Hp.

Harm.

Cadenza

39

Cl. Solo in Sib.

1

2

1

2

1

2

1

2

1

2

1

2

1

2

43

Fl. Picc.

Fl. I

Fl. II

Ob.

Cor. Ing.

Cl. I

Cl. B.

Fg.

C. Fg.

43

Cr. I

Cr. II

Cor. III

Cor. IV

Tr. I

Tr. II & III

Trmb. I & II

Trmb. B.

Tuba

43

Bat. I

Bat. II

Bat. III

Pf/Cel.

Hp.

Harm.

43

Cl. Solo in Sib.

(Poco cresc.)

(Poco cresc.)

(Towards end.)

(Ord.)

1

2

1

2

1

2

1

2

1

2

1

2

Senza sord.

fpp

fpp

fpp

fpp

ff

Senza sord.

fpp

fpp

fpp

fpp

ff

fpp

fpp

fpp

fpp

ff

fpp

fpp

fpp

fpp

ff

D

Esteso

47

Fl. Picc.

Fl. I

Fl. II

Ob.

Cor. Ing.

Cl.

Cl. B.

Fg.

C. Fg.

pp *f* *pp* *ff* *pp* *mf* *pp* *mp* *pp* *pp*

Senza sord. (Bend down from E₄)

47

Cr. I

Cr. II

Cor. III

Cor. IV

Tr. I

Tr. II e III

Trmb. I e II

Trmb. B.

Tuba

pp *mf* *pp* *f* *pp* *mp* *pp* *p* *pp* *pp*

Esteso

47 (Crotales)

Bat. I

Bat. II

Bat. III

PF/Cel.

Hp.

Harm.

f *pp* *ff* *pp* *mf* *f* *mp* *mf* *pp* *pp*

Vibrafono:
Arco

pp *50s*

(Cluster with hand. Increasing in notes, then diminishing upwards the keyboard)

D

Esteso

47

Cl. Solo in Sib

VI. I

VI. II

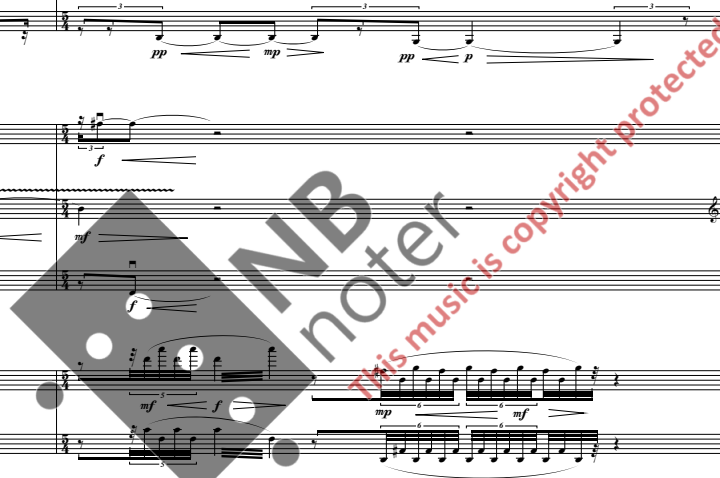
Vcl.

Vcl.

Cb.

pp *f* *pp* *ff* *pp* *mf* *pp* *mp* *pp* *pp*

D



Rit.

Misterioso $\text{♩} = 42$

I. Movement

50

Fl. Picc.

Fl. I

Fl. II

Ob.

Cor. Ing.

Cl.

Cl. B.

Fg.

C. Fg.

50

Cr. I

Cr. II

Cor. III

Cor. IV

Tr. I

Tr. II e III

Trmb. I e II

Trmb. B.

Tuba

50

Glass:

Bat. I

Bat. II

Bat. III

Pf/Cel.

Hp.

Harm.

Pianoforte:

Tam tam:

Gong cinese:

50

Rit.

Misterioso $\text{♩} = 42$

Cl. Solo in Sib.

Pizz.

VI. I

VI. II

Vlc. 1

Vlc. 2

Vlc. 1

Vlc. 2

Cb. 1

Cb. 2

Div.

Unis.

This page of a musical score, page 18 of the first movement, features a variety of instruments. The woodwind section includes Flute I, Flute II, Oboe, Cor Anglais, Clarinet I, Clarinet B, Bassoon, and Contrabassoon. The brass section consists of Trumpet I, Trumpet II & III, Trombone I & II, Trombone B, Tuba, and three Basses (I, II, III). The string section includes Violin I, Violin II, Viola, Violoncello, and Contrabasso. The percussion section includes Gran cassa and Campana. The piano and harp are also present. The score is marked with dynamics such as *pp*, *p*, *mp*, and *f*. A large watermark for 'NB noter' is visible across the center of the page, along with the text 'This music is copyright protected'.

Poco Rit.

A Tempo

Rit.

57

Fl. Picc.

Fl. I

Fl. II

Ob.

Cor. Ing.

Cl.

Cl. B.

Fg.

C. Fg.

57

Cr. I

Cr. II

Cor. III

Cor. IV

Tr. I

Tr. II e III

Trmb. I e II

Trmb. B.

Tuba

Poco Rit.

A Tempo

Rit.

57 (Tam tam)

Bat. I

Bat. II

Bat. III

Pf. Cel.

Hp.

Harm.

Poco Rit.

A Tempo

Rit.

57

Cl. Solo in Sib

Arco

VI. I

VI. II

Vcl. 1

Vcl. 2

Vcl. 1

Vcl. 2

Cb. 1

Cb. 2

E A Tempo

Fl. Picc.
Fl. I
Fl. II
Ob.
Cor. Ing.
Cl.
Cl. B.
Fg.
C. Fg.

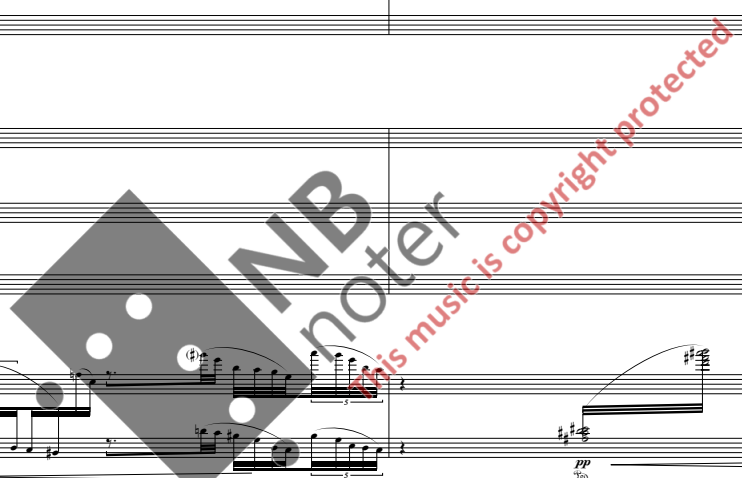
Cr. I
Cr. II
Cor. III
Cor. IV
Tr. I
Tr. II e III
Trmb. I e II
Trmb. B.
Tuba

E A Tempo

Bat. I
Bat. II
Bat. III
Celesta:
Pf/Cel.
Hp.
Harm.

E A Tempo

Cl. Solo in Sib.
VI. I
VI. II
Vcl. I
Vcl. II
Cb.



65 Fl. Picc.

65 Fl. I

65 Fl. II

Ob.

Cor. Ing.

Cl.

Cl. B.

Fg.

C. Fg.

65 Cr. I

65 Cr. II

65 Cor. III

65 Cor. IV

Tr. I

Tr. II & III

Trmb. I & II

Trmb. B.

Tuba

65 Tam tam:

Bat. I

Bat. II

Bat. III

Campane:

Pf./Cel.

Harp:

Horn:

65 Cl. Solo in Si

VI. I

VI. II

Vlc.

Vlc.

Cb.

This music is copyright protected

Poco Rit.

F ♩ = 46

68

Fl. Pic.

Fl. I

Fl. II

Ob.

Cor. Ing.

Cl.

Cl. B.

Fg.

C. Fg.

68

Cr. I

Cr. II

Cor. III

Cor. IV

Tr. I

Tr. II e III

Trmb. I e II

Trmb. B.

Tuba

Poco Rit.

F ♩ = 46

68

Bat. I

Gran cassa:

Bat. II

Bat. III

Pf/Cel.

Hp.

Harm.

Poco Rit.

F ♩ = 46

68

Cl. Solo in Sib

VI. I

VI. II

Vcl. 1

Vcl. 2

Vcl. 1

Vcl. 2

Cb. 1

Cb. 2

71

Fl. Picc.

Fl. I

Fl. II

Ob.

Cor. Ing.

Cl.

Cl. B.

Fg.

C. Fg.

Cr. I

Cr. II

Cor. III

Cor. IV

Tr. I

Tr. II e III

Trmb. I e II

Trmb. B.

Tuba

Bat. I

Bat. II

Bat. III

P/Cel.

Hp.

Harm.

Cl. Solo in Sp.

VI. I

VI. II

Vlc.

Vlc.

Cb.

This music is copyright protected

Detaché e tenuto

Detaché e tenuto

74

Fl. Picc. *mf* *f* *ff*

Fl. I *f* *p* *f* *ff* *mf* *f* *ff*

Fl. II *p* *f* *ff* *mf* *f* *ff*

Ob. *fp* *mf* *f* *ff*

Cor. Ing. *f* *fp* *mf* *f* *ff*

Cl. *p* *f* *ff* *mf* *f* *ff*

Cl. B. *p* *f* *ff* *mf* *f* *ff*

Fg. *p* *ff* *mf* *f* *ff*

C. Fg. *p* *ff* *mf* *f* *ff*

74

Cr. I *mp* *f*

Cr. II *mp* *f*

Cor. III *mp* *f*

Cor. IV *mp* *f*

Tr. I *p* *f*

Tr. II e III *p* *f*

Trmb. I e II *p* *f*

Trmb. B. *p* *f*

Tuba *mf*

74

Bat. I *ff*

Bat. II *mf*

Bat. III *mf*

Set:
ff Metal piece (Low):
mf Metal piece (Low):

Pf/Cel.

Hp.

Harm. *f* *ff*

74

Cl. Solo in Sib *ff* *f* *ff*

VI. I 1 *ff* *mf* *f* *mf* *f*

VI. I 2 *f* *p* *ff* *mf* *f* *mf* *f*

VI. II 1 *f* *p* *ff* *mf* *f* *mf* *f*

VI. II 2 *f* *p* *ff* *mf* *f* *mf* *f*

Vlc. 1 *p* *f* *p* *ff* *mf* *f* *mf* *f*

Vlc. 2 *f* *p* *ff* *mf* *f* *f* *f*

Vlc. 1 *f* *p* *ff* *mf* *f* *mf* *f*

Vlc. 2 *f* *p* *ff* *mf* *f* *mf* *f*

Cb. 1 *p* *ff* *mf* *f* *mf* *f*

Cb. 2 *p* *ff* *mf* *f* *mf* *f*

Pizz. *mf* *f* *mf* *f*

Fl. Picc. *f* *ff*

Fl. I *f* *ff* *p* *f* *p* *f* *ff*

Fl. II *f* *ff* *p* *f* *p* *f* *ff*

Ob. *f* *ff* *p* *f* *ff*

Cor. Ing. *f* *ff* *p* *f* *ff*

Cl. *f* *ff* *p* *f* *p* *f* *ff*

Cl. B. *f* *ff* *p* *f* *p* *f* *ff*

Fg. *f* *ff* *f* *ff*

C. Fg. *f* *ff* *f* *ff*

Cr. I *mf* *ff* *p* *ff*

Cr. II *mf* *ff* *p* *ff*

Cor. III *mf* *ff* *p* *ff*

Cor. IV *mf* *ff* *p* *ff*

Tr. I *p* *ff*

Tr. II e III *p* *ff*

Trmb. I e II *p* *ff*

Trmb. B. *p* *ff*

Tuba *p* *ff*

Bat. I Tam tam: *pp* *ff*

Bat. II

Bat. III

(Pianoforte)

Pf/Cel. *f* *ff* *p* *f* *p* *f* *ff*

Hp.

Harm. *f* *ff*

Cl. Solo in Sp. *ff* *ff* *f* *ff*

VI. I *ff* *p* *f* *p* *f* *ff*

VI. II *f* *ff* *p* *f* *p* *f* *ff*

Vcl. *f* *ff* *p* *f* *p* *f* *ff*

Vcl. *ff* *p* *f* *p* *f* *ff*

Vcl. *ff* *p* *f* *p* *f* *ff*

Cb. *p* *ff*

Arco Div. *ff* *p* *f* *p* *f* *ff*

Unis. *ff* *p* *f* *p* *f* *ff*

Arco *p* *ff*

Arco *p* *ff*

80

Fl. Picc. *f* *ff* *ff*

Fl. I *f* *ff* *ff*

Fl. II *f* *ff* *ff*

Ob. *f* *ff* *ff*

Cor. Ing. *f* *ff* *ff*

Cl. *f* *ff* *ff*

Cl. B. *f* *ff* *ff*

Fg. *f* *ff* *ff*

C. Fg. *f* *ff* *ff*

Cr. I *mf* *f* *f* *ff*

Cr. II *mf* *f* *f* *ff*

Cor. III *mf* *f* *f* *ff*

Cor. IV *mf* *f* *f* *ff*

Tr. I *p* *ff*

Tr. II e III *p* *ff*

Trmb. I e II *mf* *ff*

Trmb. B. *mf* *ff*

Tabu. *mf* *p* *ff*

80 Set:

Bat. I *ff* *pp* *ff*

Bat. II *mf*

Bat. III *mf*

Pf/Cel. *ff*

Hp. *ff* *f*

Harm.

80

Cl. Solo in Sp. *ff* *ff* *ff* *ff*

VL I *f* *ff* *ff* *mp*

VL II *f* *ff* *ff* *mp*

VL I *f* *ff* *ff* *ff*

VL II *f* *ff* *ff* *ff*

Vlc. 1 *f* *ff* *ff* *mp*

Vlc. 2 *f* *ff* *ff* *mp*

Vlc. 1 *f* *ff* *ff* *f*

Vlc. 2 *f* *ff* *ff* *f*

Vlc. 1 *f* *ff* *ff* *f*

Vlc. 2 *f* *ff* *ff* *f*

Vlc. 1 *f* *ff* *ff* *f*

Vlc. 2 *f* *ff* *ff* *f*

Cb. 1 *f* *ff* *ff* *f*

Cb. 2 *f* *ff* *ff* *f*

Pizz. *f* *ff* *ff* *ff*

Pizz. *f* *ff* *ff* *ff*

Col legno bat. *f* *ff* *ff* *f*

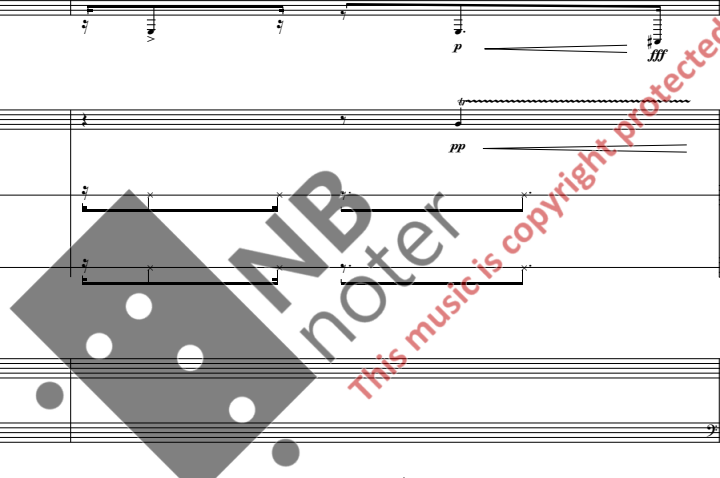
Col legno bat. *f* *ff* *ff* *f*

Arco *f* *ff* *ff* *mp*

Arco *f* *ff* *ff* *mp*

Arco *f* *ff* *ff* *mp*

Arco *f* *ff* *ff* *mp*



83

Fl. Picc.

Fl. I

Fl. II

Ob.

Cor. Ing.

Cl.

Cl. B.

Fg.

C. Fg.

83

Cr. I

Cr. II

Cor. III

Cor. IV

Tr. I

Tr. II e III

Trmb. I e II

Trmb. B.

Tuba

83

Bat. I

Bat. II

Bat. III

Pf/Cel.

Hp.

Harm.

83

Cl. Solo in Sib.

VI. I

VI. II

1

Div. Col legno bat.

2

Pizz.

Arco

1

Arco

2

Arco

1

Arco

2

1

2

1

2

(Perfect fourth)

G

Fl. Picc.

Fl. I

Fl. II

Ob.

Cor. Ing.

Cl.

Cl. B.

Fg.

C. Fg.

Cr. I

Cr. II

Cor. III

Cor. IV

Tr. I

Tr. II e III

Trmb. I e II

Trmb. B.

Tuba

Marimba:

Bat. I

Bat. II

Bat. III

Pf/Cel.

Hp.

Harm.

Cl. Solo in Sib

VI. I

VI. II

Vcl. 1

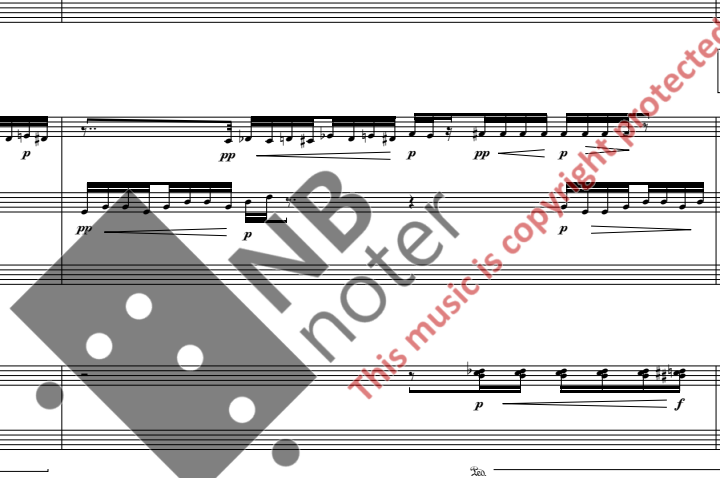
Vcl. 2

Vcl. 1

Vcl. 2

Cb. 1

Cb. 2



Poco Accel.

♩ = 54

Fl. Picc.
Fl. I
Fl. II
Ob.
Cor. Ing.
Cl.
Cl. B.
Fg.
C. Fg.

Cor. I
Cor. II
Cor. III
Cor. IV
Tr. I
Tr. II e III
Trmb. I e II
Trmb. B.
Tuba

Poco Accel.

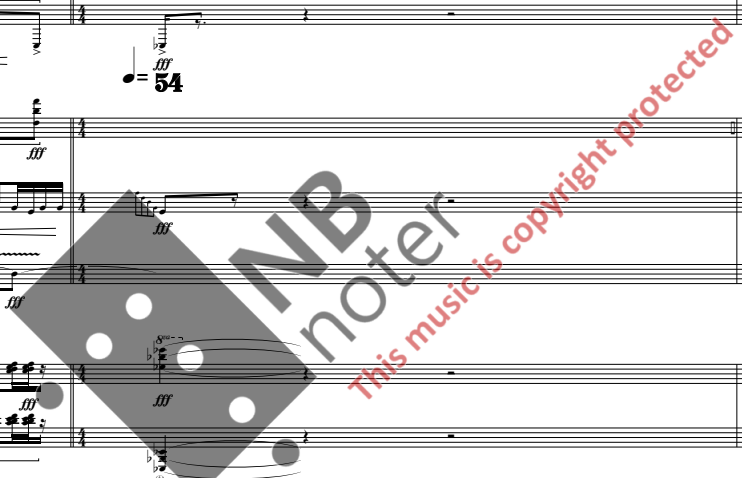
♩ = 54

Bat. I
Bat. II
Bat. III
Perc.
Ccl.
Hp.

Poco Accel.

♩ = 54

Cl. Solo in Str.
VI. I
VI. II
Vlc.
Vlc.
Cb.



This page contains the musical score for the first movement, page 31. The score is written for a full orchestral ensemble and includes the following parts and measures:

- Fl. Picc.** (Piccolo Flute): Measures 92-100.
- Fl. I & II** (First and Second Flutes): Measures 92-100.
- Ob.** (Oboe): Measures 92-100.
- Cor. Ing.** (Cornet in G): Measures 92-100.
- Cl.** (Clarinet): Measures 92-100.
- Cl. B.** (Bass Clarinet): Measures 92-100.
- Fg.** (Fagotto): Measures 92-100.
- C. Fg.** (Cello Fagotto): Measures 92-100.
- Cr. I & II** (Trumpets I and II): Measures 92-100.
- Cor. III & IV** (Cornets III and IV): Measures 92-100.
- Tr. I & II** (Trumpets I and II): Measures 92-100.
- Trmb. I & II** (Trombones I and II): Measures 92-100.
- Trmb. B.** (Trombone Bass): Measures 92-100.
- Tuba**: Measures 92-100.
- Bat. I, II, III** (Bass Drums I, II, III): Measures 92-100.
- Pf./Cel.** (Piano/Cello): Measures 92-100.
- Hp.** (Harp): Measures 92-100.
- Harm.** (Horn): Measures 92-100.
- Cl. Solo in Sib.** (Clarinet Solo in B-flat): Measures 92-100.
- Vl. I & II** (Violins I and II): Measures 92-100.
- Vcl.** (Violoncello): Measures 92-100.
- Cb.** (Contrabasso): Measures 92-100.

The score includes dynamic markings such as *pp*, *p*, *f*, and *ff*. A watermark for "NB noter" is visible across the center of the page. The bottom right corner contains the instruction: *(Con sord. (Straight))*. The music is written in a complex rhythmic style with frequent changes in dynamics and articulation.

Fl. Picc. *ff*

Fl. I *ff*

Fl. II *ff*

Ob. *ff*

Cor. Ing. *ff*

Cl. *ff*

Cl. B. *ff*

Fg. *ff*

C. Fg. *ff*

Cor. I *ff*

Cor. II *ff*

Cor. III *ff*

Cor. IV *ff*

Tr. I *pp* Senza sord.

Tr. II e III *pp* Senza sord.

Trmb. I e II *ff*

Trmb. B. *ff*

Tuba *ff*

Bat. I *ff*

Bat. II *ff*

Bat. III *ff*

Pf./ Cel. *ff*

Hp.

Harm. *ff*

Cl. Solo in Sp. *ff*

VI. I *ff*

VI. II *ff*

Vlc. *ff*

Vlc. *ff*

Cb. *ff*

Cb. *ff*

Gran cassa:

Tam tam:

Tam tam:

Tenor drum:

Multiphonic Gliss.

Sul pont.

Ord.

ff, *p*, *f*, *pp*, *ppp*, *fff*

This page contains the musical score for the first movement, page 33. The instruments listed on the left include:

- Fl. Picc.
- Fl. I
- Fl. II
- Ob.
- Cor. Ing.
- Cl.
- Cl. B.
- Fg.
- C. Fg.
- Cr. I
- Cr. II
- Cor. III (C# optional Svab.)
- Cor. IV
- Tr. I
- Tr. II e III
- Trmb. I e II
- Trmb. B.
- Tuba
- Bat. I
- Bat. II
- Bat. III
- Pf/Cel.
- Hp.
- Harm.
- Cl. Solo in Sb.
- VI. I (Violin I)
- VI. II (Violin II)
- Vcl. (Violoncello)
- Cb. (Contrabasso)

The score features various dynamic markings such as *ff*, *p*, *f*, and *mf*. A large watermark for 'NB noter' is overlaid on the page, with the text 'This music is copyright protected' written diagonally across it.

101

Fl. Picc.

Fl. I

Fl. II

Ob.

Cor. Ing.

Cl.

Cl. B.

Fg.

C. Fg.

101

Cr. I

Cr. II

Cor. III

Cor. IV

Tr. I

Tr. II e III

Trmb. I e II

Trmb. B.

Tuba

101

Bat. I

Bat. II

Bat. III

Pf/Cel.

Hp.

Harm.

101

Cl. Solo in Sib

1

VI. I

2

1

VI. II

2

1

Vcl. Div.

2

1

Vcl.

2

1

Cb.

2

Pizz. Arco

Pizz. Arco

103

Fl. Picc.

Fl. I

Fl. II

Ob.

Cor. Ing.

Cl.

Cl. B.

Fg.

C. Fg.

Cr. I

Cr. II

Cor. III

Cor. IV

Tr. I

Tr. II e III

Trmb. I e II

Trmb. B.

Tuba

Bat. I

Bat. II

Bat. III

Gran cassa:

Set:

PU/Cel.

Hp.

Harm.

Cl. Solo in Sp.

VI. I

VI. II

Vlc. Unis.

Vlc. Unis.

Vlc.

Vlc.

Cb.

Cb.

This music is copyright protected

This page of the musical score, numbered 36, is titled "I. Movement". It contains a comprehensive orchestral arrangement for measures 106 through 130. The score is organized into several systems of staves:

- Woodwinds:** Flute I, Flute II, Oboe, Cor Anglais, Clarinet, Clarinet Bass, Bassoon, and Contrabassoon.
- Brass:** Cornets I-IV, Trumpets I-III, Trombones I & II, Trombone Bass, and Tuba.
- Percussion:** Three different Tam tam instruments.
- Other Instruments:** Piano/Cello, Harp, and Harmonium.
- Strings:** A section for Solo Clarinet in B-flat, Violin I (1 and 2), Violin II (1 and 2), Viola (1 and 2), and Cello (1 and 2).

The score includes various musical notations such as dynamics (e.g., *pp*, *f*, *ff*), articulation (accents, slurs), and performance instructions like "(Flag gliss.)" and "(a 2)". A large, semi-transparent watermark for "NB noter" is overlaid on the central portion of the page, with the text "This music is copyright protected" written diagonally across it.

II. Movement

Lontano ♩ = 52

Flauto Piccolo
Flauti I
Flauti 2
Oboa
Corno Inglese
Clarinetto in Si
Clarinetto Basso in Si
Fagotto
Contrafagotto

Air through instr: *pp* *mf* *pp* *f*

Fl Alto: *pp* *mf* *pp* *f*

(Ord.) *pp*

Clarinetto in Si: *ppp*

Corni in Fa I
Corni in Fa II
Corni in Fa III
Corni in Fa IV
Trombe in Si I
Trombe in Si II e III
Tromboni I e II
Trombona Basso
Tuba

fff

Con sord. *ppp*

Con sord. *ppp*

Con sord. *ppp*

Air through instr: *pp* *p* *pp* *p*

Lontano ♩ = 52

Batteria I
Batteria II
Batteria III

Tam tam: Superball *p* *mf* *p* *f*

Tam tam: Superball (Optional played on Gong cinese) *p* *mf* *p* *f*

Pianoforte:
Pianoforte/Celesta

Wire brush: *pp* *f* *pp* *ff*

Arpa

Wire brush: *pp* *f* *pp* *ff*

Harmonium

Lontano ♩ = 52

Clarinetto Solo in Si
Violini I
Violini II
Viola
Violoncelli
Contrabbassi

Con sord. Vertical bowing: *pp* *mp* *pp* *f*

Con sord. Vertical bowing: *pp* *mp* *pp* *f*

Con sord. Vertical bowing: *pp* *mp* *pp* *f*

Con sord. Vertical bowing: *pp* *mp* *pp* *f*

Con sord. Vertical bowing: *pp* *mp* *pp* *f*

Con sord. Vertical bowing: *pp* *mp* *pp* *f*

Div. *pp* *mp*

pp *ff*

7

Fl. Picc.

Fl. I *p* *ppp* *p* *ppp* *mf*

Fl. 2 *p* *ppp* *p* *ppp* *mf*

Ob.

Cor. Ing.

Cl. *pp* *ppp* *p* *ppp* *mf*

Cl. B. *pp* *ppp* *p* *ppp* *mf*

Fg.

C. Fg. *pp* *fff*

Cr. I *ppp*

Cr. II *ppp* *mf*

Cr. III *ppp* *mf*

Cr. IV *ppp* *mf*

Tr. I

Tr. II e III

Tmb. I e II

Tmb. B.

Tuba

Bat. I *p* *f* *p* *f* *pp* *f*

Bat. II *f* *p* *f* *pp* *f*

Bat. III *f* *p* *f* *pp* *f*

Pr./Ccl.

Hp.

Harm. *ppp* *mf*

Cl. Solo *p* *ppp* *mf*

1 *pp* *mp*

2 *pp* *mp*

VI. I *pp* *mf* *Ord.* *Div.*

VI. II *pp* *mf* *Ord.* *Div.*

Vcl. 1 *pp* *mf*

Vcl. 2 *pp* *mf*

1 *pp* *fff*

2 *pp* *fff*

Senza sord.

Ord.

Div. Sul tasto

NB noter This music is copyright protected

Fl. Pic.

Fl. 1

Fl. 2

Ob.

Cor. Ing.

Cl.

Cl. B.

Fg.

C. Fg.

Cr. I

Cr. II

Cr. III

Cr. IV

Tr. I

Tr. II & III

Trmb. I & II

Trmb. B.

Tuba

Bat. I

Bat. II

Bat. III

Pf./Cel.

Hp.

Harm.

Cl. Solo

VI. I

VI. II

Vlc.

Vlc.

Cb.

Senza sord.

Unis. Ord.

Ord. stricks:

ppp

pp

mp

p

f

(Lowest possible pitch)

This music is copyright protected

A

Fl. Picc.
Fl. I
Fl. 2
Ob.
Cor. Ing.
Cl.
Cl. B.
Fg.
C. Fg.

Musical score for woodwinds and strings. Includes parts for Flute Piccolo, Flute I, Flute 2, Oboe, Cor Anglais, Clarinet, Clarinet Bass, Bassoon, and Contrabass. Dynamics range from *pp* to *fff*.

Cr. I
Cr. II
Cr. III
Cr. IV
Tr. I
Tr. II e III
Trmb. I e II
Trmb. B.
Tuba

Musical score for brass instruments. Includes parts for Trumpets I-IV, Trombones I-III, and Tuba. Dynamics range from *pp* to *mf*. Includes instruction "Senza sord." for Trumpets II and III.

A

Bat. I
Bat. II
Bat. III
Pf/ Cel.
Hp.
Harm.

Musical score for percussion instruments. Includes parts for Bass Drum I-III, Piano/Celesta (with instruction "Tap on side of piano (on wooden panel)"), Harp, and Harmonica (with instruction "Tap on keys without pitch"). Dynamics range from *pp* to *f*. Includes instruction "Crotales: Arco" for the three bass drums.

A

Cl. Solo
VI. I
VI. 2
VI. II
Vlc.
Vcl.
Cb.

Musical score for strings. Includes parts for Solo Clarinet, Violin I, Violin II, Viola I, Viola II, Violin, and Double Bass. Dynamics range from *pp* to *fff*. Includes instructions like "Pizz.", "Div.", "Arco", "Ord.", and "(Solo)" / "(Tutti)".

Fl. Picc.

Fl. I

Fl. 2

Ob.

Cor. Ing.

Cl. I

Cl. II

B. Cl.

Fg.

C. Fg.

Cr. I

Cr. II

Cr. III

Cr. IV

Tr. I

Tr. II e III

Tmb. I e II

Tmb. B.

Tuba

Bat. I

Bat. II

Bat. III

Pl./Cel.

Hp.

Harm.

Cl. Solo

VI. I

VI. II

Vcl. I

Vcl. II

Cb. I

Cb. II

Tap on side of Celesta (on wooden panel):

Tap on side of harp (on wooden panel):

Pizz.

Arco

Div.

Unis.

Flag. gliss. IV

Flag. gliss. V

NB noter

This music is copyright protected

Poco Rit.

Fl. Picc.

Fl. I

Fl. 2

Ob.

Cor. Ing.

Cl.

Cl. B.

Fg.

C. Fg.

Cr. I

Cr. II

Cr. III

Cr. IV

Tr. I

Tr. II e III

Trmb. I e II

Trmb. B.

Tuba

Bat. I

Bat. II

Bat. III

Pl./Cel.

Hp.

Harm.

Cl. Solo

VI. I

VI. II

Vcl. 1

Vcl. 2

Cb. 1

Cb. 2

mf

f

ff

mp

p

pp

con sord. (straight)

cresc.

Arco

Div.

Pizz.

Unis.

ff

f

mf

pp

ppp

Poco Rit.

Poco Rit.

Poco Rit.

Watermark: NBnoter, This music is copyright protected

A Tempo

Rit.

Fl. Pic.
Fl. I
Fl. 2
Ob.
Cor. Ing.
Cl.
Cl. B.
Fg.
C. Fg.
Cr. I
Cr. II
Cr. III
Cr. IV
Tr. I
Tr. II & III
Trmb. I & II
Trmb. B.
Tuba

A Tempo

Rit.

Bat. I
Bat. II
Bat. III
P/Cel.
Hp.
Harm.

A Tempo

Rit.

Cl. Solo
VI. I
VI. II
Vcl.
Vcl.
Cb.

Poco Rit. Lontano ♩ = 42

A Tempo

muta Fl. grande

Fl. Picc.
Fl. I
Fl. 2
Ob.
Cor. Ing.
Cl.
Cl. B.
Fg.
C. Fg.
Cr. I
Cr. II
Cr. III
Cr. IV
Tr. I
Tr. II e III
Trmb. I e II
Trmb. B.
Tuba

Poco Rit. Lontano ♩ = 42

A Tempo

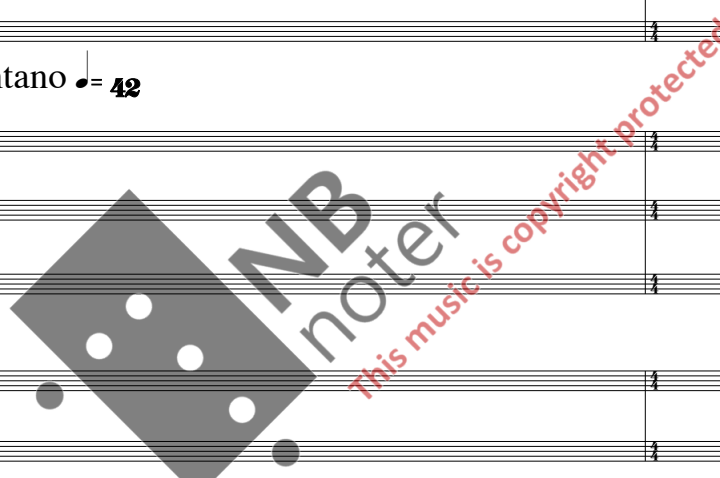
Bat. I
Bat. II
Bat. III
Pf./Cel.
Hp.
Harm.

Poco Rit. Lontano ♩ = 42

A Tempo

Cl. Solo
VI. I
VI. II
Vle.
Vlc.
Cb.

Unis.
Pult I Con sord.
Pult II Con sord.
Pult I Con sord.
Pult II Con sord.
Con sord. Sul tasto
Pult I Div. 7
Pult II Con sord. Sul tasto
Ord.



II. movement

B

Fl. Picc.
Fl. I
Fl. 2
Ob.
Cor. Ing.
Cl.
Cl. B.
Fg.
C. Fg.

Dynamic markings: *pppp*, *ppp*, *p*, *f*, *ppp*.
Performance instruction: *muta Cl. in La*.

Cr. I
Cr. II
Cr. III
Cr. IV
Tr. I
Tr. II e III
Trmb. I e II
Trmb. B.
Tuba

Dynamic marking: *pp*.
Performance instruction: *Con sord.*

B

Bat. I
Bat. II
Bat. III
Pf/ Cel.
Hp.
Harm.

Dynamic marking: *pp*.
Performance instruction: *(Celesta)*.

Poco Rit.

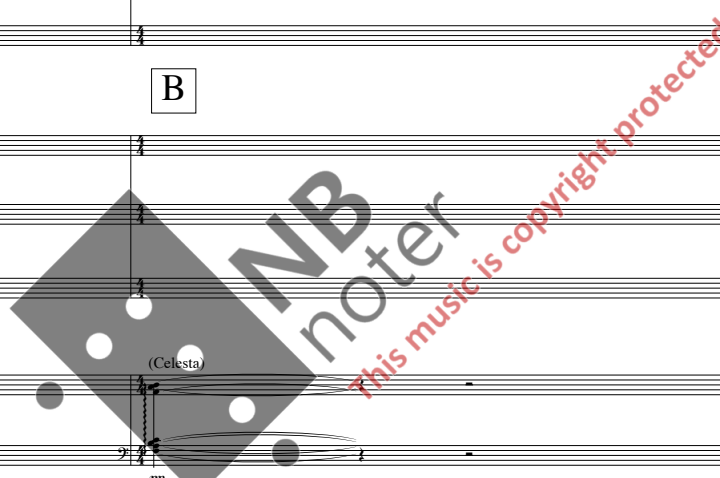
Tam tam:
Arco
p
Tam tam:
Arco
p
Tam tam:
Arco
p

B

Cl. Solo
VI. I
VI. 2
Vcl. 1
Vcl. 2
Vcl. 1
Vcl. 2
Cb. 1
Cb. 2

Dynamic markings: *pp*, *ppp*, *pp*, *ppp*, *p*, *f*, *ppp*.
Performance instructions: *Vibrato estremo*, *Sul tasto*, *Con sord.*, *Senza sord.*, *Ord.*, *Unis.*, *Molto vibrato*.

Poco Rit.



Ballando

Fl. grande:

Fl. Pic. Fl. I Fl. 2 Ob. Cor. Ing. Cl. Cl. B. Fg. C. Fg.

Musical score for woodwinds and strings. Flutes (Piccolo, I, 2) and Oboe play melodic lines with dynamics ranging from *pp* to *mp*. Clarinets (in La) and Bassoon play harmonic support. Contrabass provides a steady bass line.

Cr. I Cr. II Cr. III Cr. IV Tr. I Tr. II e III Trmb. I e II Trmb. B. Tuba

Musical score for brass instruments. Cornets I-IV and Trumpets I-III play melodic lines. Trombones I & II and Tuba provide harmonic support. Dynamics include *pp* and *mp*. Some parts are marked "(Con sord.)".

Ballando

Bat. I Bat. II Bat. III Pf/Cel. Hp. Harm.

Musical score for percussion and keyboard instruments. Bass Drums I-III play rhythmic patterns. Cymbals (Pf/Cel.) provide texture. Harp and Harmonium play accompaniment. Dynamics range from *pp* to *mp*. Tam tam parts are marked "Tam tam: Triangle stick".

Ballando

Cl. Solo Vl. I Vl. II Vlc. Vcl. Cb.

Musical score for strings and solo Clarinet. Solo Clarinet plays a melodic line. Violins I & II, Violas, Violoncellos, and Double Basses play accompaniment. Dynamics range from *pp* to *mp*. Some parts are marked "Tutti Senza sord." and "Sul tasto".

Fl. Pic. 43

Fl. 1

Fl. 2 Fl. Alto: mp mf mp mf mp mf ff

Ob. p mf ff

Cor. Ing. p mf ff

Cl. mf ff

Cl. B. mf ff

Fg. mf ff

C. Fg. mf ff

Cr. I 43 Senza sord. mf ff

Cr. II Senza sord. mf ff

Cr. III Senza sord. mf ff

Cr. IV Senza sord. mf ff

Tr. I

Tr. II e III

Trmb. I e II pp mf

Trmb. B. pp mf

Tuba pp mf

Bat. I 43

Bat. II

Bat. III

P/Cel. mf ff

Hp. p f

Harm. mp f

Cl. Solo 43 mp mf f

VI. I Sul tasto pp mf

VI. I Sul tasto pp mf

VI. II Sul tasto pp mf

VI. II Sul tasto pp mf

Vcl. 1 Senza sord. pp mf

Vcl. 2 Senza sord. Unis. pp mf

Vcl. 1 Sul tasto pp mf Div. pp mf

Vcl. 2 Sul tasto pp mf pp mf

Cb. 1 IV mp f

Cb. 2 Div. III pp mf

C

46 3x

Fl. Picc.

Fl. I

Fl. 2

Ob.

Cor. Ing.

Cl. (Play only first time)

Cl. B. (Play only first time)

Fg.

C. Fg.

Fl. grande:

p *ff*

46

Cr. I

Cr. II

Cr. III

Cr. IV

Tr. I

Tr. II e III

Trmb. I e II

Trmb. B.

Tabu.

mf *p < f*

46 3x

Bat. I Water gong:

Bat. II Water gong:

Bat. III Water gong:

Pf/Cel. Pianoforte:

Hp.

Harm.

p *pp* *mf* *ppp*

46 3x (Play only first time)

Cl. Solo

VI. I

VI. II

Vlc. 1

Vlc. 2

Cb. 1 (Play only last time)

Cb. 2 (Play only last time)

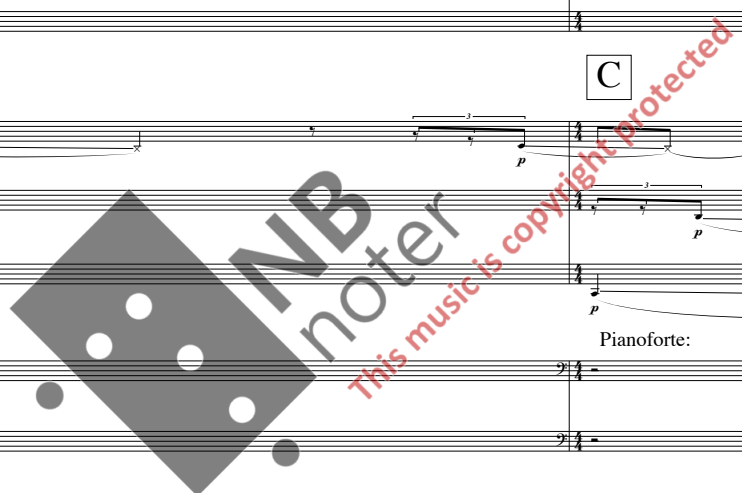
Vibrato estremo

Con sord. Practice mute (Optional norm. mute)

Con sord. Div. Practice mute (Optional norm. mute)

Unis.

pp *f* *ppp* *pp* *mf* *pp < f*



Volare ♩ = 46
Fl. Piccolo:

Fl. Picc.
Fl. 1
Fl. 2
Ob.
Cor. Ing.
Cl.
Cl. B.
Fg.
C. Fg.

C. I.
C. II.
C. III.
C. IV.
Tr. I.
Tr. II e III.
Trmb. I e II.
Trmb. B.
Tuba

Con sord.
Con sord.
Con sord.
Con sord.
Con sord. (harmon)
Con sord. (harmon)
Senza sord.
Senza sord.

Bat. I.
Bat. II.
Bat. III.
Pf/Cel.
Hp.
Harm.

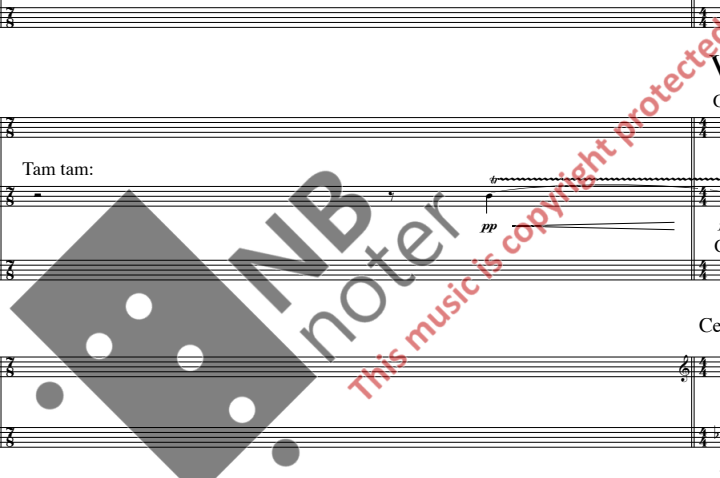
Tam tam:
Cow bells:
Cow bells:
Celesta:

Volare ♩ = 46

Cl. Solo.
VI. 1.
VI. 2.
VI. 1.
VI. 2.
Vcl. 1.
Vcl. 2.
Vcl. 1.
Vcl. 2.
Cb. 1.
Cb. 2.

Volare ♩ = 46

Con sord.
Con sord.
Con sord.
Con sord.
Pizz. behind bridge
Arco



53

Fl. Picc. *pp*

Fl. I *pp*

Fl. 2 *pp*

Ob. *pppp* *pp*

Cor. Ing. *pppp* *pp*

Cl. *pppp* *pp*

Cl. B. *p* *pppp* *pp*

Fg. *p*

C. Fg. *pp* *p*

C. I. *pp* *mf* Senza sord.

C. II. *pp* *mf* Senza sord.

C. III. *pp* *mf* Senza sord.

C. IV. *pp* *mf* Senza sord.

Tr. I *pppp*

Tr. II e III

Trmb. I e II

Trmb. B.

Tuba

Bat. I *p* *f* Gran cassa:

Bat. II *p* *f*

Bat. III *p* *f*

Pf/Cel. *p* *f*

Hp. *pp*

Harm. *p*

Cl. Solo *p* *pppp* *pp* *p*

VI. I *p* *pppp* Senza sord.

VI. 2 *p* *pppp* Senza sord.

VI. II. 1 *p* *pp* Senza sord.

VI. II. 2 *p* *pppp* Senza sord.

Vlc. 1 Norm. sord. *pp* *pp* *pp* *pp* Senza sord.

Vlc. 2 Norm. sord. *pp* *pp* *pp* *pp* Senza sord. Unis.

Vcl. 1 Pizz. behind bridge *p* Arco *pp* *p* *pp* *pp* Senza sord.

Vcl. 2 Pizz. behind bridge *p* Arco *pp* *p* *pp* *pp* Senza sord.

Cb. 1 Pizz. behind bridge *p* Arco behind bridge *pp* *p* *pp* *pp* Norm.

Cb. 2 Pizz. behind bridge *p* Arco behind bridge *pp* *p* *pp* *pp* Norm.

Fl. Grande: *mp*

Molto vibr.

This page contains the musical score for the second movement, page 52. The score is arranged in systems, with each system containing multiple staves for different instruments. The instruments listed include:

- Fl. Picc.
- Fl. I
- Fl. 2
- Ob.
- Cor. Ing.
- Cl.
- Cl. B.
- Fg.
- C. Fg.
- Cr. I
- Cr. II
- Cr. III
- Cr. IV
- Tr. I (Con sord. (straight))
- Tr. II (Con sord. (straight))
- Tmb. I & II
- Tuba
- Bat. I
- Bat. II
- Bat. III
- P/Cel.
- Hp.
- Harm.
- Cl. Solo
- VI. I
- VI. II
- Vcl. (Violins I and II)
- Vcl. (Violas I and II)
- Cb. (Cello I and II)

The score includes various musical notations such as notes, rests, slurs, and dynamic markings (e.g., *mp*, *f*, *mf*, *p*, *ff*). Performance instructions like "Pizz. behind bridge" and "Arco" are also present. A large watermark "NB noter" and "This music is copyright protected" is overlaid on the score.

59

Fl. Picc.

Fl. I

Fl. 2

Ob.

Cor. Ing.

Cl.

Cl. B.

Fg.

C. Fg.

59

Cr. I

Cr. II

Cr. III

Cr. IV

Tr. I

Tr. II e III

Tmb. I e II

Tmb. B.

Taba

59

Bat. I

Bat. II

Bat. III

Pf/ Cel.

Hp.

Harm.

59

Cl. Solo

1

VI. I

2

1

VI. II

2

1

Vcl.

2

1

Vcl.

2

1

Cb.

2

Cow bells:
(passage optional)

Senza sord.

Vibrato estremo

Pizz.

Arco

Pizz. behind bridge:

Arco

Div.

This music is copyright protected

D

Fl. Picc.
Fl. I
Fl. 2
Ob.
Cor. Ing.
Cl.
Cl. B.
Fg.
C. Fg.

Cr. I
Cr. II
Cr. III
Cr. IV
Tr. I
Tr. II e III
Trmb. I e II
Trmb. B.
Tuba

Bat. I
Bat. II
Bat. III
Perc.
Cel.
Hp.
Harm.

Tam tam:
Gran cassa:
Gong cinese.

D

Cl. Solo
VI. I
VI. II
Vcl.
Vcl. 1
Vcl. 2
Cb.

Poco Rit.

A Tempo

Fl. Pic.
Fl. I
Fl. 2
Ob.
Cor. Ing.
Cl. in Sib.
Cl. Basso in Sib.
Fg.
C. Fg.
Cr. I
Cr. II
Cr. III
Cr. IV
Tr. I
Tr. II e III
Trmb. I e II
Trmb. B.
Tuba

Poco Rit.

A Tempo

Bat. I
Bat. II
Bat. III
Pf/Cel.
Hp.
Ham.

Poco Rit.

A Tempo

Cl. Solo
Vi. I Solo
Vi. I
Vi. II Solo
Vi. II
Vcl. Solo
Vcl. I
Vcl. II
Cb. I
Cb. II

Largo ♩ = 46

68

Fl. Picc.

Fl. I

Fl. 2

Ob.

Cor. Ing.

Cl.

Cl. B.

Fg.

C. Fg.

Cr. I

Cr. II

Cr. III

Cr. IV

Tr. I

Tr. II e III

Trmb. I e II

Trmb. B.

Taba

Largo ♩ = 46

Poco Accel.

68

Bat. I

Bat. II

Bat. III

Pf/Cel.

Hp.

Harm.

Cowbells:

Set:

Celesta:

Largo ♩ = 46

Poco Accel.

68

Cl. Solo

VI. I

VI. II

Vlc. 1

Vlc. 2

Vlc. 1

Vlc. 2

Cb. 1

Cb. 2

Pizz.

Arco

♩ = 52

Fl. Picc.
 Fl. I
 Fl. 2
 Ob.
 Cor. Ing.
 Cl.
 Cl. B.
 Fg.
 C. Fg.
 Cr. I
 Cr. II
 Cr. III
 Cr. IV
 Tr. I
 Tr. II e III
 Trmb. I e II
 Trmb. B.
 Tuba

Gong cinese:

♩ = 52

Bat. I
 Bat. II
 Bat. III
 Pf/Cel.
 Hp.
 Harm.

Vibrafono:
 Campana

♩ = 52

Cl. Solo
 VI. I
 VI. II
 Vc. I
 Vc. II
 Vc. III
 Cb. I
 Cb. II

Arco
 Pizz.
 Arco Div.
 Div.
 Unis.
 Molo vibr.
 (Keep harmonics "sounding")

Poco Accel. II. movement

74

Fl. Picc.

Fl. I

Fl. 2

Ob.

Cor. Ing.

Cl.

Cl. B.

Fg.

C. Fg.

C. I.

C. II.

C. III.

C. IV.

Tr. I

Tr. II e III

Trmb. I e II

Trmb. B.

Tabu.

Poco Accel.

74

Marimba:

Bat. I

Bat. II

Bat. III

Pr. Ccl.

Hp.

Harm.

Poco Accel.

74

Cl. Solo

Div.

VI. I

VI. II

Vcl.

Vcl.

Cb.

Poco Accel.

II. movement

♩ = 58

Fl. Picc.
Fl. I
Fl. 2
Ob.
Cor. Ing.
Cl.
Cl. B.
Fg.
C. Fg.

Cr. I
Cr. II
Cr. III
Cr. IV
Tr. I
Tr. II e III
Trmb. I e II
Trmb. B.
Tuba

♩ = 58

Bat. I Sleigh bells:
Set:
Cow bells:
Pianoforte:
Vibrafono:
Hp.
Harm.

♩ = 58

Cl. Solo
Unis.
VI. I
VI. II
Vle. 1
Vle. 2
Vlc. 1
Vlc. 2
Cb. 1
Cb. 2

II. movement

80

Fl. Picc.

Fl. I

Fl. 2

Ob.

Cor. Ing.

Cl.

Cl. B.

Fg.

C. Fg.

80

Cr. I.

Cr. II.

Cr. III.

Cr. IV.

Tr. I

Tr. II e III

Trmb. I e II

Trmb. B.

Tuba

Crotales:

Bat. I

Bat. II

Bat. III

Pf/Cel.

Hp.

Harm.

Cl. Solo

VI. I

VI. II

Vcl.

Vcl.

Cb.

In rilievo

Tam tam:

Gran cassa:

Campane:

Pizz.

Arco

Div.

mf *f* *ff* *p* *mp* *pp* *ppp*

Fl. Picc.

Fl. 1

Fl. 2

Ob.

Cor. Ing.

Cl.

Cl. B.

Fg.

C. Fg.

Cr. I

Cr. II

Cr. III

Cr. IV

Tr. I

Tr. II e III

Trmb. I e II

Trmb. B.

Tuba

Bat. I

Bat. II

Bat. III

Pf/Cel.

Hp.

Harm.

Cl. Solo

VI. I

VI. II

Vle.

Vlc.

Vlc.

Ch.

Ch.

Marimba:

Vibrafono:

Col legno

Col legno

Div.

Div.

Unis.

Col legno

Col legno

NB noter
This music is copyright protected

This page of the musical score contains the following instruments and parts:

- Flutes:** Fl. Picc., Fl. I, Fl. 2, Fl. grande (starting at measure 86).
- Woodwinds:** Ob., Cor. Ing., Cl., Cl. B., Fg., C. Fg., Cor. I, Cor. II, Cor. III, Cor. IV, Tr. I, Tr. II e III, Trmb. I e II, Trmb. B., Tuba.
- Brass:** Bat. I, Bat. II, Bat. III, Pr./Ccl., Hp., Harm., Cl. Solo.
- Strings:** VI. I (Violin I), VI. II (Violin II), Vcl. (Violoncello), Vcl. (Violoncello), Cb. (Contrabasso).

Key performance markings include dynamic levels such as *mf*, *p*, *pp*, *f*, *ff*, and *fz* (for *fzando*). A *Tam tam* is introduced in the percussion section. The score is marked with a large 'F' in a box at the top right and bottom right, indicating a specific section or rehearsal mark.

Esteso

89

Fl. Picc.

Fl. I

Fl. 2

Ob.

Cor. Ing.

Cl.

Cl. B.

Fg.

C. Fg.

Fl picc:

89

Cr. I

Cr. II

Cr. III

Cr. IV

Tr. I

Tr. II e III

Tmb. I e II

Tmb. B.

Taba

Con sord. (straight)

II. Con sord. (straight)

III. Con sord. (straight)

89

Tam tam:

Esteso

Bat. I

Bat. II

Bat. III

Cel. I

Cel. II

Hp.

Harm.

Gran cassa:

Celesta:

(optional passage)

89

Esteso

Cl. Solo

VI. I

VI. II

Vcl.

Vcl.

Pizz.

Arco

Div.

Unis.

(Non col legno)

(Non col legno)

II. movement

Accel.

♩ = 54

Fl. Pic. Fl. I Fl. 2 Ob. Cor. Ing. Cl. Cl. B. Fg. C. Fg. Cr. I Cr. II Cr. III Cr. IV Tr. I Tr. II + III Trmb. I + II Trmb. B. Tuba

Fl. Grande:

In rilievo

Senza sord.

a2

(B, Optional Bva)

Accel.

♩ = 54

Bat. I Bat. II Bat. III

Ratchet:

Tam tam:

Tam tam:

Set:

Pianoforte:

Hp.

Harm.

Accel.

♩ = 54

Cl. Solo Vl. I Vl. II Vcl. Vcl. Cb.

Pizz.

Arco

Div. sul pont.



G

Fl. Picc.

Fl. I

Fl. II

Ob.

Cor. Ing.

Cl.

Cl. B.

Fg.

C. Fg.

C. I.

C. II.

C. III.

C. IV.

Tr. I

Tr. II e III

Trmb. I e II

Trmb. B.

Tuba

Bat. I Set:

Bat. II

Bat. III Set:

Pf./Cel.

Hp.

Harm.

Cl. Solo

VI. I

VI. II

Vcl. 1

Vcl. 2

Vcl. 1

Vcl. 2

Vcl. 1

Vcl. 2

Cb. 1

Cb. 2

Arco

Pizz.

Arco Div. sul pont.

Unis. ord.

Div.

Con sord. (Straight)

In rilievo

mp, *mf*, *f*, *ff*, *p*, *pp*, *sfz*, *fz*

Watermark: NB noter This music is copyright protected

♩ = 69

This page contains the musical score for the second movement, page 66. It features a full orchestral arrangement with various instruments and solo parts.

- Woodwinds:** Flute 1 & 2 (Fl. 1, Fl. 2), Oboe (Ob.), Cor Anglais (Cor. Ing.), Clarinet in E-flat (Cl.), Clarinet in B-flat (Cl. B.), Bassoon (Fg.), Contrabassoon (C. Fg.), Cor Anglais I & II (Cor. I, Cor. II), Cor Anglais III & IV (Cor. III, Cor. IV), Trumpet I & II (Tr. I, Tr. II), Trombone I & II (Trmb. I & II), Trombone B (Trmb. B), and Tuba (Tuba).
- Percussion:** Snare Drum I & II (Bat. I, Bat. II), Bass Drum (Bat. III), and Celesta (Cesta).
- Strings:** Violin I & II (VI. I, VI. II), Viola I & II (Vcl. I, Vcl. II), Violoncello I & II (Vcl. I, Vcl. II), and Contrabass I & II (Cb. I, Cb. II).
- Solo Instruments:** Clarinet Solo (Cl. Solo) and Cello Solo (Ccl. Solo).

The score includes dynamic markings such as *f* (forte), *ff* (fortissimo), *mf* (mezzo-forte), *mp* (mezzo-piano), *p* (piano), and *pp* (pianissimo). Performance instructions like *Molto vibr.* (Molto vibrato) and *Arco Div.* (arco divisi) are present. A large watermark "MNB noter" and "this music is copyright protected" is overlaid on the page.

114

Fl. Picc.

Fl. I

Fl. 2

Ob.

Cor. Ing.

Cl.

Cl. B.

Fg.

C. Fg.

Cr. I

Cr. II

Cr. III

Cr. IV

Tr. I

Tr. II e III

Trmb. I e II

Trmb. B.

Tuba

114 Timpani:

Bat. I
p Tenor drum: mf p mf p

Bat. II
p Gran cassa: mf p

Bat. III
p Timpani: mf p

Pf./Cel.

Hp.

Harm.

Cl. Solo

114

Vl. I 1 Pizz. Arco Pizz. Arco Pizz. Arco Pizz. Arco

Vl. I 2 Pizz. Arco Pizz. Arco Pizz. Arco Pizz. Arco

Vl. II 1 Pizz. Arco Pizz. Arco Pizz. Arco Pizz. Arco

Vl. II 2 Pizz. Arco Pizz. Arco Pizz. Arco Pizz. Arco

Vcl. 1 Pizz. Arco Pizz. Arco Pizz. Arco Pizz. Arco

Vcl. 2 Pizz. Arco Pizz. Arco Pizz. Arco Pizz. Arco

Vcl. 1 Unis. Pizz. Pizz. Pizz.

Vcl. 2 Pizz. Pizz. Pizz.

Cb. 1 Unis.

Cb. 2

117

Fl. Pic. Fl. I Fl. 2 Ob. Cor. Ing. Cl. Cl. B. Fg. C. Fg.

117

Co. I Co. II Co. III Co. IV Tr. I Tr. II e III Trmb. I e II Trmb. B. Tuba

117

Bat. I Bat. II Bat. III

PF/Cel. Hp. Harm.

117

Cl. Solo

VI. I VI. II Vlc. Vlc. Cb.

Set: Gran cassa: Set: Tam tam:

Arco

II. mouvement
Pesante
I
Danse du Grottesque

Fl. Picc. Fl. I Fl. 2 Ob. Cor. Ing. Cl. Cl. B. Fg. C. Fg.

Cr. I Cr. II Cr. III Cr. IV Tr. I Tr. II e III Trmb. I e II Trmb. B. Tuba

Bat. I Bat. II Bat. III

Pf. Cel. Hp. Harm.

Cl. Solo Vl. I Solo 1 Vl. I 2 Vl. II Solo 1 Vl. II 2 Vlc. Solo 1 Vlc. 2 Vlc. Solo 1 Vlc. 2 Ch. 1 Ch. 2

120

I Pesante Danse du Grottesque

Set:
Metal piece:
Metal piece:

Pizz. Arco
Pizz. Arco

This page contains the musical score for the second movement, page 73. The score is arranged in systems for various instruments. The woodwind section includes Flute Piccolo (Fl. Picc.), Flute 1 (Fl. 1), Flute 2 (Fl. 2), Oboe (Ob.), Cor Anglais (Cor. Ing.), Clarinet in A (Cl.), Clarinet in Bb (Cl. B.), Bassoon (Fg.), and Contrabassoon (C. Fg.). The brass section includes Trumpet I (Tr. I), Trumpet II & III (Tr. II & III), Trombone I & II (Trmb. I & II), Trombone III (Trmb. B.), and Tuba. The percussion section includes three Bass Drums (Bat. I, II, III), Timpani (Timpani), Tenor Drum (Tenor drum), and Gran Cassa (Gran cassa). The keyboard section includes Piano (Pf.) and Celesta (Cel.). The string section includes Harp (Hp.), Horns (Horn), Clarinet Solo (Cl. Solo), Violin Solo (VI. Solo), Violin I (VI. I), Violin II (VI. II), Viola Solo (Vla. Solo), Viola I (Vla. I), Viola II (Vla. II), Violoncello Solo (Vcl. Solo), Violoncello I (Vcl. I), Violoncello II (Vcl. II), and Double Bass (Cb.). The score includes various musical notations such as dynamics (f, ff, mf), articulation (accents, slurs), and performance instructions (Pizz., Arco). A large watermark is present in the center of the page, reading 'NB noter This music is copyright protected'.

127

Fl. Picc.

Fl. I

Fl. 2

Ob.

Cor. Ing.

Cl.

Cl. B.

Fg.

C. Fg.

127

Ct. I

Ct. II

Ct. III

Ct. IV

Tr. I

Tr. II e III

Trmb. I e II

Trmb. B.

Tuba

127 Set:

Bat. I

Bat. II Metal piece:

Bat. III Metal piece:

Timpani:

Tenor drum:

Gran cassa:

Pf/Cel.

Hp.

Harm.

127

Cl. Solo

VI. I Solo

VI. I

VI. II Solo

VI. II

Vcl. Solo

Vcl.

Vcl.

Vcl. Solo

Vcl. Pizz. Arco

Vcl. Pizz. Arco

Vcl. Pizz. Arco

Vcl. Pizz. Arco

Div.

J

131

Fl. Picc.

Fl. I

Fl. 2

Ob.

Cor. Ing.

Cl.

Cl. B.

Fg.

C. Fg.

J

131

Cl. I

Cl. II

Cl. III

Cl. IV

Tr. I

Tr. II & III

Trmb. I & II

Trmb. B.

Tuba

J

131

Bat. I

Bat. II

Bat. III

Pf/Cel.

Hp.

Harm.

J

131

Cl. Solo

VI. I Solo

VI. I 1

VI. I 2

VI. II Solo

VI. II 1

VI. II 2

Vcl. Solo

Vcl. 1

Vcl. 2

Vcl. Solo

Vcl. 1

Vcl. 2

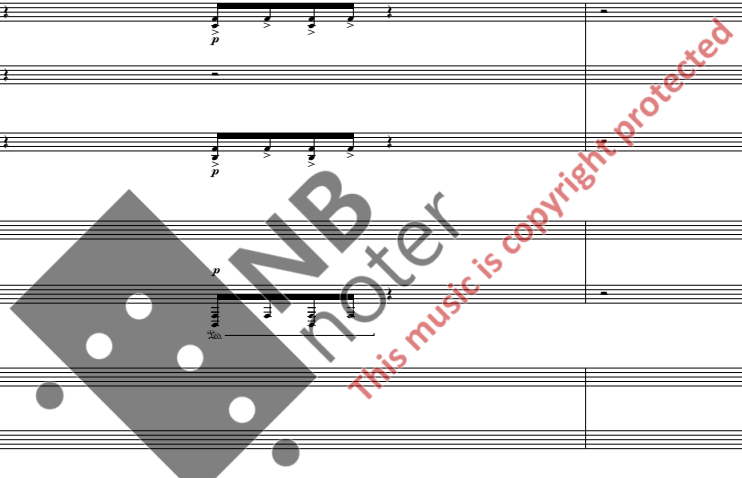
Cb. 1

Cb. 2

Unis. Pizz. b

Arco

Pizz.



This page contains the musical score for the second movement, page 76. The score is arranged in a standard orchestral format with multiple staves for each instrument family. The instruments listed on the left side of the page include:

- Fl. Piccolo (Fl. Picc.)
- Flute 1 (Fl. 1)
- Flute 2 (Fl. 2)
- Oboe (Ob.)
- Cor Anglais (Cor. Ing.)
- Clarinet in C (Cl.)
- Clarinet in Bb (Cl. B.)
- Bassoon (Fg.)
- Contrabassoon (C. Fg.)
- Corn 1 (C. I.)
- Corn 2 (C. II.)
- Corn 3 (C. III.)
- Corn 4 (C. IV.)
- Trumpet 1 (Tr. I)
- Trumpet 2 & 3 (Tr. II e III)
- Timpani 1 & 2 (Timp. I e II)
- Timpani Bass (Timp. B.)
- Tuba
- Bass Drum I (Bat. I)
- Bass Drum II (Bat. II)
- Bass Drum III (Bat. III)
- Percussion/Cymbals (Perc. Cyl.)
- Harp (Hp.)
- Horn (Horn)
- Clarinet Solo (Cl. Solo)
- Violin I Solo (VI. I Solo)
- Violin I (VI. I)
- Violin II Solo (VI. II Solo)
- Violin II (VI. II)
- Viola Solo (Vlc. Solo)
- Viola (Vlc.)
- Violoncello Solo (Vcl. Solo)
- Violoncello (Vcl.)
- Double Bass 1 (Cb. 1)
- Double Bass 2 (Cb. 2)

The score begins at measure 134. The woodwinds and strings play complex rhythmic patterns, often marked with *ff* (fortissimo). The brass section provides harmonic support, with some parts marked *f* (forte). The percussion section includes a *Tam tam* part. The string section features *Arco* (arco) markings, indicating that the strings are to be played with the bow. The score is divided into measures by vertical bar lines, and the page concludes with a double bar line at the end of the system.

137

Fl. Picc.

Fl. I

Fl. II

Ob.

Cor. Ing.

Cl.

Cl. B.

Fg.

C. Fg.

Cr. I

Cr. II

Cr. III

Cr. IV

Tr. I

Tr. II & III

Trmb. I & II

Trmb. B.

Tuba

Bat. I

Bat. II

Bat. III

Pf./Cel.

Hp.

Harm.

Cl. Solo

VI. I

VI. II

Vcl.

Vcl.

Cb.

Cb.

Tam tam:

Tam tam:

(D optional Svab.)

This music is copyright protected

139

Fl. Picc.

Fl. 1

Fl. 2

Ob.

Cor. Ing.

Cl.

Cl. B.

Fg.

C. Fg.

Cr. I

Cr. II

Cr. III

Cr. IV

Tr. I

Tr. II & III

Trmb. I & II

Trmb. B.

Tuba

Bat. I

Bat. II

Bat. III

Pf./Cel.

Hp.

Harm.

Cl. Solo

VI. I

VI. II

Vcl.

Vcl.

Cb.

(Tam tam)

Tam tam:

(Tam tam)

Div.

NB noter
This music is copyright protected

3. Movement

Jan Erik Mikalsen

Lontano ♩ = 46

Fl. Grande:

Fl. Alto:

Flauto Piccolo
Flauti 1
Flauti 2
Obua
Corni Inglese
Clarinetto in Si
Clarinetto Basso in Si
Fagotto
Contrafagotto

Con sord.

Con sord.

Corni I in Fa
Corni II in Fa
Corni III in Fa
Corni IV in Fa
Trombe I in Si
Trombe II e III in Si
Tromboni I e II
Trombona basso
Tuba

Lontano ♩ = 46

Sleigh bells:

Piatto sizzle (piatto sospeso):
With back of stick

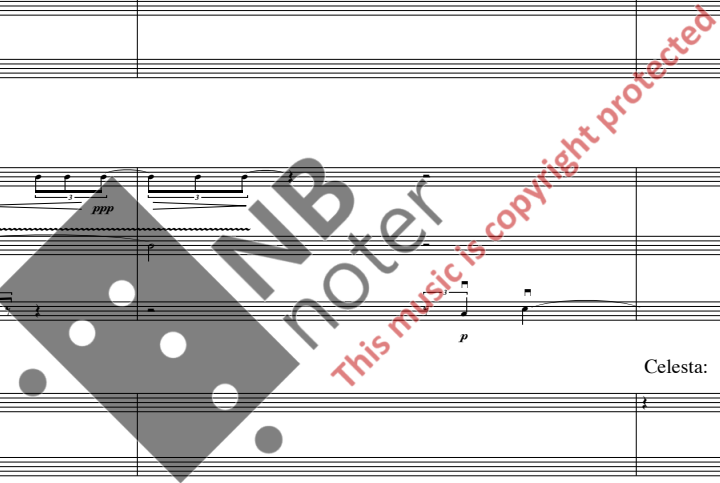
Crotales:
Arco

Celesta:

Batteria I
Batteria II
Batteria III
Pianoforte/
Celesta
Arpa
Harmonium

Lontano ♩ = 46

Clarinetto Solo in Si
Violini I
Violini II
Viole
Violoncelli
Contrabassi



Fl. Picc.

Fl. 1

Fl. 2

Ob.

Cor. Ing.

Cl.

Cl. B.

Fg.

C.Fg.

Cr. I

Cr. II

Cr. III

Cr. IV

Tr. I in Sib

Tr. II & III in Sib

Tmb. I & II

Tmb. B.

Tbn.

Bat. I

Bat. II

Bat. III

Perc. Ccl.

Arp.

Harm.

Cl. Solo in B.

Vl. I Solo

Vl. I

Vl. II Solo

Vl. II

Vcl. Solo

Vcl.

Vcl.

Cb.

pppp

pp

p

sfz

Con sord.

Grand cassa:

Sul pont.

Unis.

(Ord.)

This music is copyright protected

III. Movement
Poco Rit. A Tempo

10

Fl. Picc.

Fl. I

Fl. 2

Ob.

Cor. Ing.

Cl.

Cl. B.

Fg.

C.Fg.

Cr. I
Senza sord.

Cr. II

Cr. III
Senza sord.

Cr. IV

Tr. I in Sib.

Tr. II e III in Sib.

Tmb. I e II

Tmb. B.

Tb.

10

Bat. I
Tam tam:
Glass: arco
Passage optional

Bat. II

Bat. III
Tam tam:
Superball

Pf. Ccl.

Arp.

Ham.

Poco Rit. A Tempo

10

Cl. Solo in B.

VI. I Solo
Sul tasto Sul pont.

VI. I 1

VI. I 2

VI. II Solo
Sul tasto Sul pont.

VI. II 1

VI. II 2

Vcl. Solo
Sul tasto Sul pont.

Vcl. 1

Vcl. 2

Vcl. Solo
Sul tasto Sul pont.

Vcl. 1

Vcl. 2

Cb. 1

Cb. 2

Poco Rit. A Tempo

Fl. Picc.
Fl. I
Fl. 2
Ob.
Cor. Ing.
Cl.
Cl. B.
Fg.
C. Fg.

Cr. I
Cr. II
Cr. III
Cr. IV
Tr. I in Si
Tr. II e III in Si
Tmb. I e II
Tmb. B.
Tb.

Senza sord.
Senza sord.

Gong cinese:
Bat. I
(Gran cassa)
Bat. II
Bat. III

Gong cinese:
Crotales:
Arco

Pf. Ccl.
Apx.
Harm.

Cl. Solo in B.
VI. I Solo
VI. I
VI. II Solo
VI. II
Vlc. Solo
Vlc.
Cb.

(Non rilievo)
(Non rilievo)
(Non rilievo)

Rit. III. Movement

A Tempo

Fl. Pic.
Fl. I
Fl. 2
Ob.
Cor. Ing.
Cl.
Cl. B.
Fg.
C. Fg.

Cr. I
Cr. II
Cr. III
Cr. IV
Tr. I in Sb.
Tr. II e III in Sb.
Tmb. I e II
Tmb. B.
Tb.

Bat. I
Bat. II
Bat. III

Pf. Cel.
Apx.
Harm.

Cl. Solo in B.

Vi. I Solo
Vi. I 1
Vi. I 2
Vi. II Solo
Vi. II 1
Vi. II 2
Vcl. Solo
Vcl. 1
Vcl. 2
Cb. 1
Cb. 2



Campanelli:
Soft mks (resemble Celosa)

Fl. Picc.

Fl. 1

Fl. 2

Ob.

Cor. Ing.

Cl.

Cl. B.

Fg.

C.Fg.

Cr. I

Cr. II

Cr. III

Cr. IV

Tr. I in Sib

Tr. II e III in Sib

Trmb. I e II

Trmb. B.

Tb.

Bat. I

Bat. II

Bat. III

Pf/Cel.

Arp.

Harm.

Cl. Solo in Bb

VI. I Solo

VI. I 1

VI. I 2

VI. II Solo

VI. II 1

VI. II 2

Vlc. Solo

Vlc. 1

Vlc. 2

Vlc. Solo

Vlc. 1

Vlc. 2

Ch.

Ch. 1

Ch. 2

Tam tam:

Piano forte:

Watermark: NB noter. This music is copyright protected.

27

Fl. Picc.

Fl. I

Fl. 2

Ob.

Cor. Ing.

Cl.

Cl. B.

Fg.

C.Fg.

27

Ct. I

Ct. II

Ct. III

Ct. IV

Tr. I in Sib

Tr. II in Eb

Trmb. I & II

Trmb. B.

Tb.

27 Gong cinese:

Bat. I

Bat. II

Bat. III

Pr./Cel.

Apr.

Harm.

27

Cl. Solo in Bb

VI. I Solo

1

VI. I

2

VI. II Solo

1

VI. II

2

Vcl. Solo

1

Vcl.

2

Vcl. Solo

1

Vcl.

2

1

Ch.

2

Tam tam:

Gran cassa:

Tam tam:

C

C

C

This music is copyright protected

Esteso

33

Fl. Pic.

Fl. I

Fl. 2

Ob.

Cor. Ing.

Cl.

Cl. B.

Fg.

C.Fg.

33

Cr. I

Cr. II

Cr. III

Cr. IV

Tr. I in Su

Tr. II e III in Su

Trmb. I e II

Trmb. B.

Tb.

Esteso

33

Bat. I

Bat. II

Bat. III

Crotales: Arco

Crotales: Arco

Celesta:

Pf/Cel.

Arp.

Harm.

Esteso

33

Cl. Solo in Bb

Div.

VI. I

VI. II

Vlc. 1

Vlc. 2

Vlc. 1

Vlc. 2

Ch. 1

Ch. 2

This page of the musical score, page 89, is titled "III. Movement". It contains the following parts and instructions:

- Woodwinds:** Fl. Picc., Fl. I, Fl. 2, Ob., Cor. Ing., Cl., Cl. B., Fg., C.Fg., Cr. I, Cr. II, Cr. III, Cr. IV, Tr. I in Su., Tr. II in Su., Trmb. I e II, Trmb. B., Tb.
- Brass:** Bat. I, Bat. II, Bat. III (with "Tam tam:" instruction).
- Percussion:** Pf./Cel., Arp., Harm.
- Strings:** Cl. Solo in Bb., VI. I (1 and 2), VI. II (1 and 2), Vlc. (1 and 2), Vcl. (1 and 2), Cb. (1 and 2).

The score includes various musical notations such as dynamics (e.g., *f*, *mf*, *mp*, *p*, *ff*), articulation (accents, slurs), and performance directions like "Poco cresc.". A large watermark "NB noter" and "This music is copyright protected" is overlaid on the page.

D $\text{♩} = 42$

Fl. Picc. *mf* *fff*

Fl. I *mf* *fff*

Fl. 2 *mf* *fff*

Ob. *mf* *fff*

Cor. Ing. *mf* *fff*

Cl. *mf* *fff*

Cl. B. *mf* *fff*

Fg. *mf* *fff*

C.Fg. *mf* *fff*

Fl. Alto: *ppp* *pp* *ppp*

Flutter tongue: *ppp* *pp* *ppp*

Cr. I *mf* *fff* *pp*

Cr. II *mf* *fff* *pp*

Cr. III *mf* *fff* *pp*

Cr. IV *mf* *fff* *pp*

Tr. I in Sib *mf* *fff*

Tr. II in Sib *mf* *fff*

Trmb. I & II *mf* *f* *fff*

Trmb. B. *mf* *f* *fff*

Tb. *mf* *f* *fff*

D $\text{♩} = 42$

Bat. I Tam tam: *ppp* *fff*

Bat. II Gran cassa: *ppp* *fff*

Bat. III Tam tam: *ppp* *fff*

Pianoforte: *ppp*

PE/Cel. *ppp*

Arp. *p*

Harm. *fff* *ppp*

D $\text{♩} = 42$

Cl. Solo in Bb *f* *fff*

Hum: (transposed) *ppp*

Play: *ppp*

VI. I Solo *f* *mf* *fff* *ppp* *pp* *ppp*

VI. I 1 *f* *mf* *fff* *ppp* *pp* *ppp*

VI. I 2 *f* *mf* *fff* *ppp* *pp* *ppp*

VI. II 1 *p* *mf* *fff* *ppp*

VI. II 2 *p* *mf* *fff* *ppp*

Vlc. 1 *mf* *fff* *ppp*

Vlc. 2 *mf* *fff* *ppp*

Vlc. 1 *mf* *fff* *ppp*

Vlc. 2 *mf* *fff* *ppp*

Cb. 1 *mf* *fff* *ppp*

Cb. 2 *mf* *fff* *ppp*



Poco Più Mosso $\text{♩} = 52$

50

Fl. Pic.

Fl. I

Fl. 2

Ob.

Cor. Ing.

Cl.

Cl. B.

Fg.

C.Fg.

50

Cr. I

Cr. II

Cr. III

Cr. IV

Tr. I in Str.

Tr. II & III in Str.

Trmb. I & II

Trmb. B.

Tb.

Con sord. (Straight)

50

Bat. I

Bat. II

Bat. III

Celesta:

Pf/Cel.

Arp.

Harm.

Poco Più Mosso $\text{♩} = 52$

50

Cl. Solo in B.

VI. I Solo

VI. I 1

VI. I 2

VI. II 1

VI. II 2

Vlc. 1

Vlc. 2

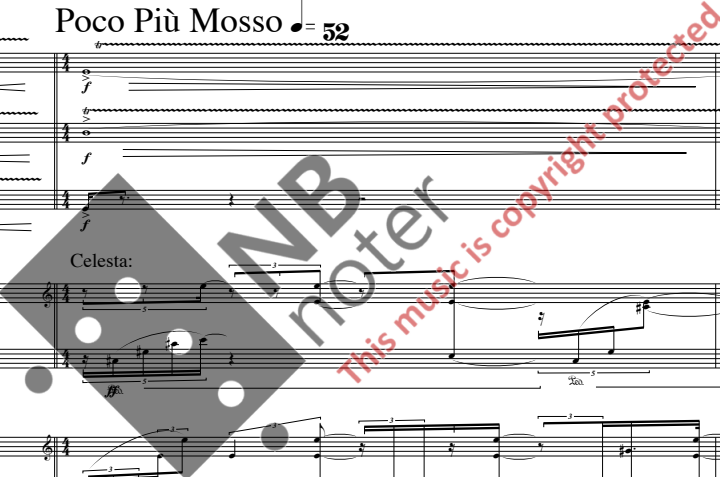
Vlc. 1

Vlc. 2

Cb. 1

Cb. 2

Tutti



60

Fl. Pic.

Fl. 1

Fl. 2

Ob.

Cor. Ing.

Cl.

Cl. B.

Fg.

C.Fg.

60

Cr. I

Cr. II

Cr. III

Cr. IV

Tr. I in Sib

Tr. II & III in Sib

Trmb. I & II

Trmb. B.

Tb.

60

Bat. I

Bat. II

Bat. III

Pr./Cel.

Arp.

Harm.

Tam tam:

60

Cl. Solo in Bb

VI. I

VI. II

Vlc. 1

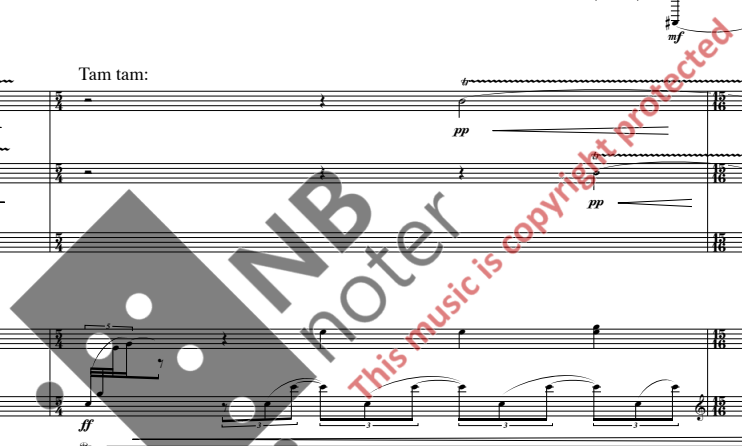
Vlc. 2

Vlc. 1

Vlc. 2

Cb. 1

Cb. 2



Placido ♩ = 42

63 **Rit.**

Fl. Picc: *ff*

Fl. I *ff* Breath through instr: *p* *mf*

Fl. 2 *ff*

Ob. *ff* *mf* *f*

Cor. Ing. *ff* *mf* *f*

Cl. *ff* *mf* *pp*

Cl. B. *ff* *pp*

Fg. *ff* *pp*

C.Fg. *ff* *pp*

Ct. I *f* *ff* *pp* *p*

Ct. II *f* *ff* *pp* *p*

Ct. III *f* *ff* *pp* *p*

Ct. IV *f* *ff* *pp* *p*

Tr. I in Str. *f* *pp* *pp* *p* Breath through instr: *mf*

Tr. II in Str. *f* *pp* *pp* *p* Breath through instr: *mf*

Trmb. I in B. *f* *pp*

Trmb. B. *f* *pp*

Tb. *f* *pp*

Rit.

Bat. I *f* *p* *ff* *pp*

Bat. II *f* *p* *ff* *pp*

Bat. III *f* *p* *ff* *pp* Wire brush: *pp*

Pf. Ccl. *ff* *pp* Pianoforte: Inside: depress silently (finger arpeggio over strings) *pp*

Arp. *ff* *pp*

Harm. *ff* *pp*

Rit.

Cl. Solo in Bb *ff* *pp*

VI. I Solo *ff* *pp* (Imitate Harmonium) *pp*

VI. I 1 *ff* *pp* *mf*

VI. I 2 *ff* *pp* *mf*

VI. II Solo *ff* *pp* (Imitate Harmonium) *pp*

VI. II 1 *ff* *pp*

VI. II 2 *ff* *pp*

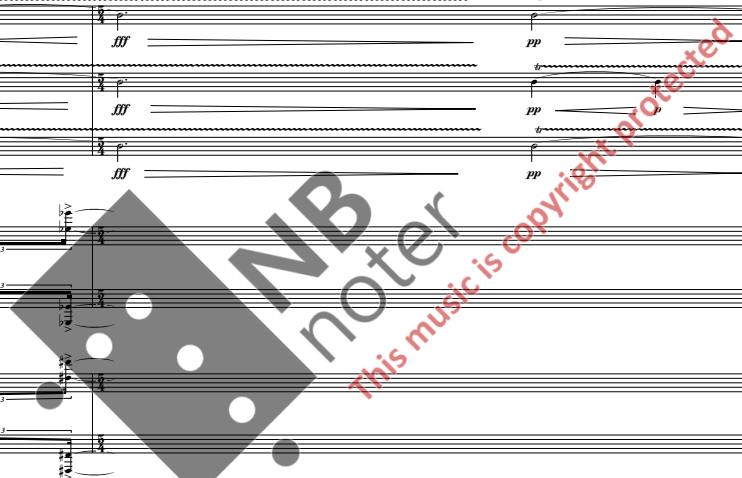
Vle. Solo *ff* *pp* (Imitate Harmonium) *pp*

Vle. 1 *ff* *pp* *f* Flag. pizz. *mf* *pp* *f* Arco *pp*

Vle. 2 *ff* *pp* *f* Flag. pizz. *mf* *pp* *f* Div. *pp* *f* Unis. Arco *pp*

Ch. 1 *ff* *pp* *f* *pp* *f* Div. *pp*

Ch. 2 *ff* *pp* *f* *pp* *f* *pp*



75 Fl. Grande:

Fl. Pic. *p* *mf* *p* *mf* Breath through instr:

Fl. I *p* *mf* *p* *mf* Breath through instr:

Fl. 2 *p* *mf* *p* *mf* Breath through instr:

Ob.

Cor. Ing.

Cl. *mf*

Cl. B. *mf*

Fg. *pp* *mf*

C.Fg. *mf*

75 Cc. I *pp* *mf*

Cc. II *pp* *mf*

Cc. III *pp* *mf*

Cc. IV *pp* *mf*

Tr. I in Sib *mf* Breath through instr:

Tr. II e III in Sib *mf* Breath through instr:

Trmb. I e II *pp* *mf* Con sord. (Harmon)

Trmb. B. *pp* *mf* Con sord. (Harmon)

Tb. *pp* *mf* Con sord.

75 Bat. I *p* *mf* Water gong: Crotales: Arco

Bat. II *pp* *mf* Gran cassa:

Bat. III *pp* *mf* Ord. stick:

Pf/Cel. *p* *mf*

Arp. *p* *mf*

Harm. *mf* *pp*

75 Cl. Solo in B. *p* *mf* *pp*

VI. I Solo *p* *mf*

VI. I 1 *pp* *mf*

VI. I 2 *pp* *mf*

VI. II Solo *p* *mf*

VI. II 1 *pp* *mf* *pp*

VI. II 2 *pp* *mf* *pp*

Vle. Solo *p* *mf*

Vle. 1 *p* *pp* *mf*

Vle. 2 *p* *pp* *mf*

Vlc. 1 *mf* *pp*

Vlc. 2 *mf* *pp*

Ch. 1 *mf* *pp*

Ch. 2 *mf* *pp*

