

Transposed Vers. of "Elegiac Memories" Piano Solo.  
(for Solo Bass tuning)

Lamentevole ♩ = 48-50

Inside Piano - Sempre

Pf.

Pizz  
P  
mf  
Ped

Pizz  
sf  
sf dim  
Ped

(consord)  
Play norm.

p  
sfz  
Ped

Inside Piano

Pizz  
sf  
Ped

Strike Strings with Palm of hand

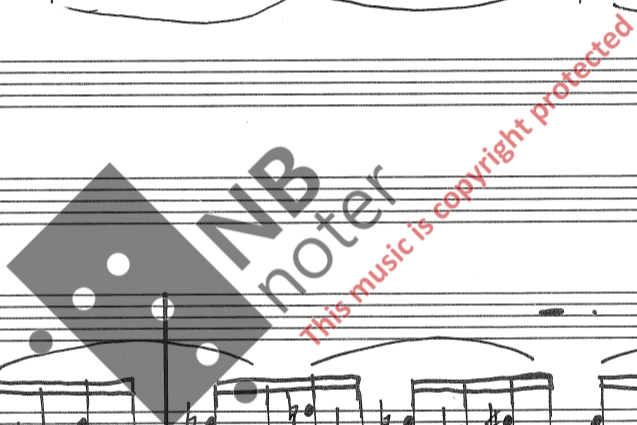
Handwritten musical score for the first system. It consists of two staves. The upper staff has a treble clef and contains a series of notes with slurs and accents. The lower staff has a bass clef and contains notes with slurs. A dynamic marking 'p' is present in the lower staff. A 'Ped' line is written below the staves, indicating the use of a sustain pedal.

Handwritten musical score for the second system. It consists of two staves. The upper staff has a treble clef and contains a series of notes with slurs and accents. The lower staff has a bass clef and contains notes with slurs. A dynamic marking 'mp' is present in the lower staff. The instruction 'Play wozm.' is written above the upper staff.

Handwritten musical score for the third system. It consists of two staves. The upper staff has a treble clef and contains a series of notes with slurs and accents. The lower staff has a bass clef and contains notes with slurs. The music features complex rhythmic patterns and slurs.

$\text{♩} = \text{♩}$  *Pur Mosso*

Handwritten musical score for the fourth system. It consists of two staves. The upper staff has a treble clef and contains a series of notes with slurs and accents. The lower staff has a bass clef and contains notes with slurs. A dynamic marking 'sf' is present in the lower staff. A 'Ped' line is written below the staves, indicating the use of a sustain pedal.



Handwritten musical score for the first system. It consists of two staves: a treble staff and a bass staff. The music is written in a complex, multi-measure style with many chords and melodic lines. Dynamic markings include *mf*, *sf*, and *mf*. There are also accents (^) and slurs (>) throughout. A pedal point is indicated at the bottom with the word "Ped" and a wavy line.

Handwritten musical score for the second system. It features two staves. Above the first staff, there is a tempo marking "Tempo I" with a quarter note symbol. A diagram labeled "Strum" is shown, illustrating a glissando effect with arrows and a curved line. The music continues with complex textures and a pedal point at the bottom.

Handwritten musical score for the third system. It consists of two staves. The music is characterized by rhythmic patterns and complex chordal structures. Dynamic markings include *p* and *mf*. A marking "con Sord" is written below the first staff, and "ped" is written below the second staff. A large watermark "NB noter" and "this music is copyright protected" is overlaid on the page.

Handwritten musical score for the fourth system. It consists of two staves with complex musical notation, including many chords and melodic lines. The system continues the intricate texture established in the previous systems.

Repeat Bars 6, 7, 8, 9 Page 2

Rit..... \* Tempo

Handwritten musical score for the first system. It features a grand staff with treble and bass clefs. Bars 6, 7, 8, and 9 are enclosed in a repeat sign. The notation includes various notes, rests, and dynamic markings such as *f*, *sfz*, and *pp*. There are also performance instructions like *nam.* and *Ped*.

Handwritten musical score for the second system. It continues the piece with various notes and rests. Dynamic markings include *mf* and *sf*. There are also performance instructions like *Ped*.

Handwritten musical score for the third system. It features a grand staff with treble and bass clefs. Dynamic markings include *mp* and *sfz*. There are also performance instructions like *Ped*.

*Pizz Inside Piano*

Handwritten musical score for the fourth system. It includes a section marked *Pizz Inside Piano* with a *pp* dynamic. The system concludes with a *sf* dynamic and a *fine* marking. A performance instruction *Ca: 8' 30"* is written at the bottom right.