

Shanghai Hao Zi

Shanghai worksong

for

Suona
Sheng
Orchestra



Ørjan Matre 2008

Composed for Shanghai International Music Spring Festival 2008
with kind support from Art Council Norway

Instrumentation

Suona Solo
Sheng Solo

Flute 1
Flute 2
Piccolo Flute
Oboe 1
Oboe 2
Oboe 3
Clarinet in B \flat 1
Clarinet in B \flat 2
Clarinet in B \flat 3 (also playing Bass Clarinet)
Bassoon 1
Bassoon 2
Bassoon 3

Horn in F 1
Horn in F 2
Horn in F 3
Horn in F 4
Trumpet in C 1
Trumpet in C 2
Trumpet in C 3
Trumpet in C 4
Tenor Trombone 1
Tenor Trombone 2
Bass Trombone
Tuba

Timpani
Percussion 1 Chinese drum
 Temple blocks (5)
 Triangle
 Chinese cymbal (medium size)
Percussion 2 Bongos
 Tom-toms (5)
 Woodblock
 Chinese cymbal (small size)
 Guiro
 Suspended cymbal (small size)
 Tam-tam (large size)
Percussion 3 Crotales
 Glackenspiel
 Chinese cymbal (large size)
 Metal block (dry sound)
 Whip

Harp
Celesta/Piano

Strings (14.12.10.8.6)




The Sheng should be slightly amplified to create a good balance between the soloists and the orchestra. From bar 138, the suona player is asked to play a preprogrammed music-box (can be ordered from www.grand-illusions.com). It should be programmed to play the Chinese tune "The song of four seasons", starting from a B \flat . The music-box should be amplified.

From bar 140, approximately half the orchestra (all winds, trumpet 2-4, all trombones, tuba, all 1st Violins (except one Solo Violin), Violin 2 (desk 4-6), Viola (desk 4-5) and all cellos are asked to quietly hum (sing with closed mouth) the "Singing Orchestra"-part. The singing-part is notated in concert pitch in each part. The singing should be very soft, as if being sung from a distance.

Explanation of notation

 Flutter-tongue

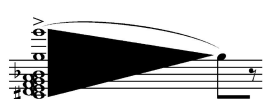
 Strings: unmeasured tremolo
Trumpets and tuba: valve tremolo using different fingerings creating the same pitch

stacc.
 Suona and winds: very fast (staccato) note-repetitions

+
Horns: stopped horn
Trumpets and trombone: closed harmon mute

o
Horns: open (after stopped horn)
Trumpets and trombone: open harmon mute

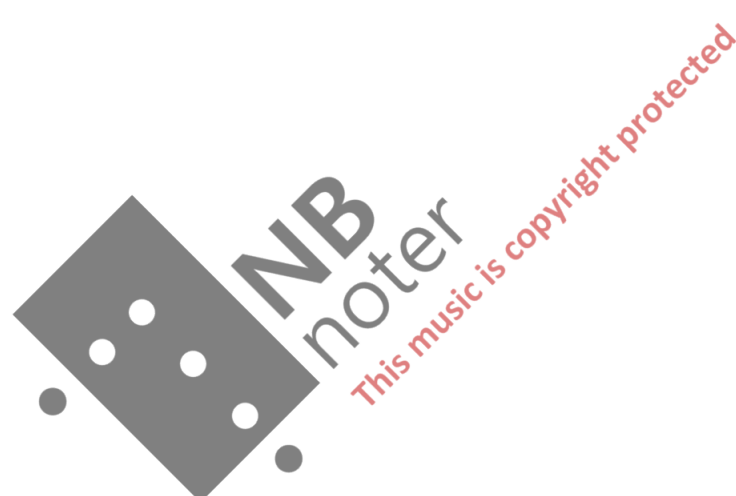
 Heavy bow-pressure

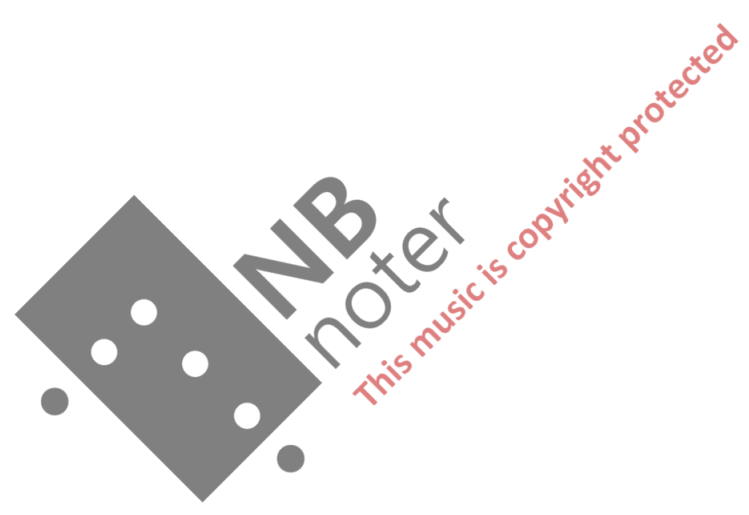


Sheng: a gradual transformation from a chord to a single pitch. The player can choose in which order the pitches should be released, but the shape of the black triangle can be used as a guideline.

All trill-notes are notated in paranthesis behind the main note

The score is transposed





Shanghai Hao Zi

Shanghai worksong

Ørjan Matre 2008

Score for Shanghai Hao Zi, featuring a variety of instruments including Suona, Sheng, Flute 1-2, Piccolo Flute, Oboe 1-3, Clarinet in Bb 1-2, Bass Clarinet, Bassoon 1-3, Horn in F 1-4, Trumpet in C 1-4, Tenor Trombone 1-2, Bass Trombone, Bass Tuba, Timpani, Percussion 1-3, Harp, Piano/Celesta, Violin I, Violin II, Viola, Cello, and Contrabass. The score includes dynamic markings (f, ff, p, mf, mp, pp), articulation (gliss., non vib., malle vib.), and performance instructions (straight mute, valve trem., divisi, sul D, sul G, sul C, plizz.). The tempo is marked as quarter note = 80. The score is divided into measures with time signatures 3/4 and 4/4. A large watermark 'NB noter' and 'this music is copyright protected' is overlaid on the score.

15 gliss. **18 Poco meno mosso** ♩ = 72

Suona

Sheng

Fl. 1

Fl. 2

Picc.

Ob. 1

Ob. 2

Ob. 3

B.-Cl. 1

B.-Cl. 2

B.-Cl. 3

Bsn. 1

Bsn. 2

Bsn. 3

Hn. 1

Hn. 2

Hn. 3

Hn. 4

C Tpt. 1

C Tpt. 2

C Tpt. 3

C Tpt. 4

T. Tbn. 1

T. Tbn. 2

B. Tbn.

B. Tba.

Tmp.

Perc. 1

Perc. 2

Perc. 3

Harp

Celesta

Vln. I

Vln. II

Vla.

Vcl.

Cb.

2/4 **4/4** **18 Poco meno mosso** ♩ = 72

(Harp harmonics sounds one octave higher)

(if five string bass is not available - play upper part)

24

Suona

Xi Huashi

She Changying

pp mp pp mp pp

3/4 accel.

24

Fl. 1

pp

Fl. 2

pp

Picc.

pp

Ob. 1

pp mp p

Ob. 2

pp mp pp

Ob. 3

pp mp pp

B.-Cl. 1

pp mp pp

B.-Cl. 2

pp mp pp

B.-Cl. 3

Bsn. 1

Bsn. 2

Bsn. 3

24

Hn. 1

p mf p

Hn. 2

Hn. 3

Hn. 4

3/4 accel.

C.Tpt. 1

(cup mute) pp

C.Tpt. 2

(straight mute) p

C.Tpt. 3

(straight mute) p

C.Tpt. 4

(straight mute) p

T.Tbn. 1

T.Tbn. 2

straight mute gliss. p

B.Tbn.

B.Tba.

24

3/4 accel.

Perc. 1

Chinese drum pp

Perc. 2

Bongos p

Perc. 3

glockenspiel rubber mallets pp mp pp

Hp.

mp

Celesta

mp pp mp pp mp mf

24

3/4 accel.

Vin. I

divisi ppp (non trem.) p ppp pp

Vin. II

divisi ppp (non trem.) p ppp pp

Via.

divisi ppp (non trem.) p ppp pp

Vic.

pp

Cb.

pp

NB noter
This music is copyright protected

32 $\text{♩} = 80$

Suona

Sheng

Fl. 1

Fl. 2

Picc.

Ob. 1

Ob. 2

Ob. 3

B. Cl. 1

B. Cl. 2

B. Cl. 3

Bsn. 1

Bsn. 2

Bsn. 3

Hr. 1

Hr. 2

Hr. 3

Hr. 4

C. Tpt. 1

C. Tpt. 2

C. Tpt. 3

C. Tpt. 4

T. Tbn. 1

T. Tbn. 2

B. Tbn.

B. Tba.

Temp.

Perc. 1

Perc. 2

Perc. 3

Hp.

Celesto

Vin. I

Vin. II

Vla.

Vic.

Cb.

non vib.

molto vib.

gliss.

pp

f

2/4

3/4

35

Change to Bass Clarinet

straight mute

harmon mute

secco

tom-toms

woodblock

crotales

Chinese cymbal (large)

hard mallets

Dx Cl Bb / Bb R G A1

gliss.

2 soli pizz.

tutti divisi

col legno jete

arco ord.

vic. solo

solo

arco sul G.

(If five string bass is not available - play upper part)

39 non vib. molto vib. stacc. 43 glos. non flutter accel.

Suona

Sheng

39 43 accel.

Ri. 1

Ri. 2

Picc.

Ob. 1

Ob. 2

Ob. 3

B. Cl. 1

B. Cl. 2

Bass Cl. [Bass Clarinet]

Bsn. 1

Bsn. 2

Bsn. 3

39 43 accel.

Hn. 1

Hn. 2

Hn. 3

Hn. 4

C. Tpt. 1 [harmon mute] p mf

C. Tpt. 2 [harmon mute] p mf

C. Tpt. 3 open f

C. Tpt. 4 open f

T. Tbn. 1 open p f

T. Tbn. 2 open p f

B. Tbn. open p f

B. Tba. open p f

39 43 accel.

Temp.

Perc. 1 temple blocks mf

Perc. 2 [woodblock] f

Perc. 3 metal block p mf

Hp.

Piano

39 43 accel.

Vin. I col legno mf p 2 soli arco ord. mp pp tutti divisi pizz. f

Vin. II col legno jefé mf mp pizz. arco tutti divisi pizz. f

Via.

SOLO

GU ALTRI

Vcl.

Cb.

46 49 ♩ = 120 Mechanical

Suona

Sheng

4
4

Fl. 1

Fl. 2

Picc.

Ob. 1

Ob. 2

Ob. 3

B.-Cl. 1

B.-Cl. 2

Bass Cl.

Bsn. 1

Bsn. 2

Bsn. 3

4
4

Hn. 1

Hn. 2

Hn. 3

Hn. 4

C. Tpt. 1

C. Tpt. 2

C. Tpt. 3

C. Tpt. 4

T. Tbn. 1

T. Tbn. 2

B. Tbn.

B. Tba.

4
4

46 49 ♩ = 120 Mechanical

Timp.

Perc. 1

Perc. 2

Perc. 3

Hp.

Piano

4
4

46 49 ♩ = 120 Mechanical

Vln. I

Vln. II

Vla.

Vic.

Cb.

arco

sul pont.

ord.

pizz.

mp

ff

mf

p

f

divisi

mp

ff

This music is copyright protected

53

Suona

Sheng

Fl. 1

Fl. 2

Picc.

Ob. 1

Ob. 2

Ob. 3

B. Cl. 1

B. Cl. 2

Bass Cl.

Bsn. 1

Bsn. 2

Bsn. 3

53

Hr. 1

Hr. 2

Hr. 3

Hr. 4

C Tpt. 1

C Tpt. 2

C Tpt. 3

C Tpt. 4

T. Tbn. 1

T. Tbn. 2

B. Tbn.

B. Tba.

53

Timp.

Perc. 1

Perc. 2

Perc. 3

Hp.

Piano

53

Vin. I

Vin. II

Vla.

Vic.

Cb.

60

Suona

Sheng

Fl. 1

Fl. 2

Picc.

Ob. 1

Ob. 2

Ob. 3

B. Cl. 1

B. Cl. 2

Bass Cl.

Bsn. 1

Bsn. 2

Bsn. 3

Hn. 1

Hn. 2

Hn. 3

Hn. 4

C Tpt. 1

C Tpt. 2

C Tpt. 3

C Tpt. 4

T. Tbn. 1

T. Tbn. 2

B. Tbn.

B. Tbn.

60

3/4 4/4 3/4 2/4 3/8 4/4 3/4

60

3/4 4/4 3/4 2/4 3/8 4/4 3/4

60

3/4 4/4 3/4 2/4 3/8 4/4 3/4

Timp.

Perc. 1

Perc. 2

Perc. 3

Hp.

Piano

60

3/4 4/4 3/4 2/4 3/8 4/4 3/4

Vin. I

Vin. II

Vla.

Vcl.

Cb.

(If five string bass is not available - play upper part)

This page contains a musical score for multiple instruments. The parts include:

- Suona**: Main melodic line with gliss. and f dynamics.
- Sheng**: Harmonic accompaniment.
- Fl. 1, Fl. 2, Picc.**: Flute parts with dynamic markings (f, mf, p).
- Ob. 1, Ob. 2, Ob. 3**: Oboe parts with dynamic markings (mf, p).
- B. Cl. 1, B. Cl. 2, Bass Cl.**: Clarinet and Bass Clarinet parts.
- Bsn. 1, Bsn. 2, Bsn. 3**: Saxophone parts.
- Hn. 1, Hn. 2, Hn. 3, Hn. 4**: Horn parts with dynamic markings (mf, p).
- C. Tpt. 1, C. Tpt. 2, C. Tpt. 3, C. Tpt. 4**: Trumpet parts, some with (harmon mute).
- T. Tbn. 1, T. Tbn. 2, B. Tbn.**: Trombone parts with gliss. and dynamic markings.
- B. Tba.**: Bass Trombone part.
- Temp.**: Timpani part.
- Perc. 1, Perc. 2, Perc. 3**: Percussion parts including temple blocks, bongos, and metal blocks.
- Harp (Hp.)**: Harp accompaniment.
- Piano**: Piano accompaniment.
- Vin. I, Vin. II**: Violin parts with pizz. and arco markings.
- Via.**: Viola part.
- Vic.**: Violoncello part.
- Cb.**: Contrabass part.

The score features a variety of time signatures (3/4, 2/4, 3/8, 4/4) and dynamic markings (p, mf, f). A large watermark is present across the center: **INB noter This music is copyright protected**.

74 gliss. f

74 3/4 2/4 3/8 3/4 2/4 3/8

Suona

Sheng

Fl. 1

Fl. 2

Picc.

Ob. 1

Ob. 2

Ob. 3

B. Cl. 1

B. Cl. 2

Bass Cl.

Bsn. 1

Bsn. 2

Bsn. 3

Hn. 1

Hn. 2

Hn. 3

Hn. 4

C. Tpt. 1

C. Tpt. 2

C. Tpt. 3

C. Tpt. 4

T. Tbn. 1

T. Tbn. 2

B. Tbn.

B. Tbn.

74 3/4 2/4 3/8 3/4 2/4 3/8

Timp.

Perc. 1

Perc. 2

Perc. 3

Harp

Piano

74 3/4 2/4 3/8 3/4 2/4 3/8

Vin. I

Vin. II

Vla.

Vcl.

Cb.

This music is copyright protected

88 93 $\text{♩} = 80$ ($\text{♩} = \text{♩}$) gliss. ff

Suono

Sheng

Fl. 1

Fl. 2

Picc.

Ob. 1

Ob. 2

Ob. 3

B. Cl. 1

B. Cl. 2

Bas. Cl.

Bsn. 1

Bsn. 2

Bsn. 3

Hr. 1

Hr. 2

Hr. 3

Hr. 4

C. Tpt. 1

C. Tpt. 2

C. Tpt. 3

C. Tpt. 4

1. Tbn. 1

1. Tbn. 2

B. Tbn.

B. Tba.

Timp.

Perc. 1

Perc. 2

Perc. 3

Hp.

Piano

Vin. I

Vin. II

Vcl. 1

Vcl. 2

Cb.

6

4 $\text{♩} = 80$ ($\text{♩} = \text{♩}$) ff non dim. ff non dim. ff

3 $\text{♩} = 80$ ($\text{♩} = \text{♩}$) ff non dim.

2 $\text{♩} = 80$ ($\text{♩} = \text{♩}$) ff non dim.

Change to Clarinet in B \flat

Chinese drum

tom-toms

bongos

Chinese cymbal (large)

arco ord.

pizz.

6

4 $\text{♩} = 80$ ($\text{♩} = \text{♩}$) ff non dim. ff non dim. ff

3 $\text{♩} = 80$ ($\text{♩} = \text{♩}$) ff non dim.

2 $\text{♩} = 80$ ($\text{♩} = \text{♩}$) ff non dim.

secco

95 gliss. *f* Chu Huashe non dim. 99 gliss. *f* Chu Huashe She Chanying *f* non dim. gliss.

Suono

Sheng

Fl. 1

Fl. 2

Picc.

Ob. 1

Ob. 2

Ob. 3

B. Cl. 1

B. Cl. 2

B. Cl. 3 *Clarinet in B.*

Bsn. 1

Bsn. 2

Bsn. 3

Hr. 1

Hr. 2

Hr. 3

Hr. 4

C. Tpt. 1 *straight mute (valve trem.)*

C. Tpt. 2 *straight mute (valve trem.)*

C. Tpt. 3 *straight mute (valve trem.)*

C. Tpt. 4 *straight mute (valve trem.)*

T. Tbn. 1 *harmon mute*

T. Tbn. 2 *harmon mute*

B. Tbn. *harmon mute*

B. Tba. *mute (valve trem.)*

95 4/4 99 4/4

Temp.

Perc. 1 *[Chinese drum]*

Perc. 2 *[tom-toms]*

Perc. 3 *[Chinese cymbal (large)]*

Hp.

Piano

95 4/4 99 4/4

Vln. I *divisi tenuto*

Vln. II *divisi tenuto*

Vla.

Vcl.

Cb.



102 107 Senza misura

Suono

Sheng (Chu Huashi) *sempre Shui Tu very soft* *sub. pp* *approx. 60* *pp* *mp*

3/4 Senza misura

Fl. 1

Fl. 2

Picc.

Ob. 1

Ob. 2

Ob. 3

B. Cl. 1

B. Cl. 2

B. Cl. 3

Bsn. 1

Bsn. 2

Bsn. 3

102 107 Senza misura

Hr. 1 *tenuato*

Hr. 2 *tenuato*

Hr. 3 *tenuato*

Hr. 4 *tenuato*

C. Tpt. 1 *tenuato*

C. Tpt. 2 *tenuato*

C. Tpt. 3 *tenuato*

C. Tpt. 4 *tenuato*

T. Tbn. 1

T. Tbn. 2

B. Tbn.

B. Tba. *(valve trem.)*

102 107 Senza misura

Timp.

Perc. 1 *(Chinese drum)* *temple blocks*

Perc. 2 *(tom-toms)* *woodblock*

Perc. 3 *whip*

Hp.

Piano *lv.* *let the pianosound die away - then change to Celesta*

102 107 Senza misura

Vin. I

Vin. II

Vla.

Vcl.

Cb.

108 $\text{♩} = 80$ 110 Senza misura

Suona

Sheng (sempre Shui Tu) *pp* *mp* *pp* *mp* *pp* *pp* approx. 60

Fl. 1 *p* *ppp*

Fl. 2 *p* *ppp*

Picc. *p* *ppp*

Ob. 1

Ob. 2

Ob. 3

B. Cl. 1 *tenuto* *mp* *pp*

B. Cl. 2

B. Cl. 3

Bsn. 1

Bsn. 2

Bsn. 3

Hn. 1 *pp* *mp* *pp*

Hn. 2 *pp* *mp* *pp*

Hn. 3 *pp* *mp* *pp*

Hn. 4 *pp* *mp* *pp*

C. Tpt. 1 *cup mute* *(valve trem.)* *pp* *mp* *pp*

C. Tpt. 2

C. Tpt. 3

C. Tpt. 4

T. Tbn. 1

T. Tbn. 2

B. Tbn.

B. Tba. *(mute)* *(valve trem.)* *pp* *mp* *pp*

4 $\text{♩} = 80$ 110 Senza misura

Timp. *triangle* *lv.* *p* *mf* *woodblock* *rubber mallets* *pp* *mp* *pp*

Perc. 1

Perc. 2

Perc. 3

Hp. *lv.* *mf* *mp*

Celesta *Celesta* *mf*

4 $\text{♩} = 80$ 110 Senza misura

Vin. I *sul tasto* *mp* *pp*

Vin. II *sul tasto* *mp* *pp*

Via.

Vic.

Cb. *solo* *sul A* *pp* *mp* *pp*

111 ♩ = 80

accel.

♩ = 120

Musical score for a symphony orchestra. The score is divided into two systems of staves. The first system includes Suona, Sheng, Fl. 1, Fl. 2, Picc., Ob. 1, Ob. 2, Ob. 3, B. Cl. 1, B. Cl. 2, B. Cl. 3, Bsn. 1, Bsn. 2, Bsn. 3, Hn. 1, Hn. 2, Hn. 3, Hn. 4, C. Tpt. 1, C. Tpt. 2, C. Tpt. 3, C. Tpt. 4, T. Tbn. 1, T. Tbn. 2, B. Tbn., B. Tba., Timp., Perc. 1, Perc. 2, Perc. 3, Hp., Celesta, Vn. I, Vn. II, Vla., Vic., and Cb. The score features various dynamics (pp, p, mp, f, ff, acc., gliss., tenuto, cup mute, valve trem., harman mute, metal block, divisi, tutti divisi, col legno jélé), articulations (acc., gliss., tenuto), and performance instructions (sempre Shui Tu, Da Ying, Change to Piano, sul tasto, sul pont.). Time signatures include 4/4, 3/4, and 2/4. A large watermark "NB noter" and "This music is copyright protected" is overlaid on the score.

124

Suono

Sheng

124

Fl. 1

Fl. 2

Picc.

Ob. 1

Ob. 2

Ob. 3

B. Cl. 1

B. Cl. 2

B. Cl. 3

Bsn. 1

Bsn. 2

Bsn. 3

124

Hr. 1

Hr. 2

Hr. 3

Hr. 4

C. Tpt. 1

C. Tpt. 2

C. Tpt. 3

C. Tpt. 4

T. Tbn. 1

T. Tbn. 2

B. Tbn.

B. Tbn.

124

Timp.

Perc. 1

Perc. 2

Perc. 3

Hp.

Piano

124

Vin. I

Vin. II

Vcl. I

Vcl. II

Cb.

marcato (non staccato)

mf

p

ff

non dim.

2/4

3/8

3/4

130

♩ = 80 (♩ - ♩)

open

tom-toms

dead stroke

crotales

arco

tutti divisi

sub.

non div.

divisi

unis

(if five string bass is not available - play upper part)

23

Sheet music score for a large orchestral ensemble, including woodwinds, brass, strings, percussion, and piano.

Instrumentation and Part Labels:
Suona
Sheng
Fl. 1
Fl. 2
Picc.
Ob. 1
Ob. 2
Ob. 3
B. Cl. 1
B. Cl. 2
B. Cl. 3
Bsn. 1
Bsn. 2
Bsn. 3
Hn. 1
Hn. 2
Hn. 3
Hn. 4
C. Tpt. 1
C. Tpt. 2
C. Tpt. 3
C. Tpt. 4
T. Tbn. 1
T. Tbn. 2
B. Tbn.
B. Tba.
Temp.
Perc. 1
Perc. 2
Perc. 3
Hp.
Piano
Vn. I
Vn. II (Desk 1-3 / Desk 4-4)
Vla. (Desk 1-3 / Desk 4-5)
Vcl.
Cb.

Score Details:
The score spans measures 131 to 136. It features complex rhythmic patterns with time signatures of 4/4 and 3/4. Dynamic markings include ff , f , p , mp , and mf . Performance instructions such as "non dim.", "very fast stacc. tonguing", "straight mute", "no tail", and "secco" are present. Percussion parts specify instruments like Chinese drum, bongos, tom-toms, and woodblock. The piano part includes the instruction "Change to Celesta".

145

Suona (Music box)

Sheng

145

Fl. 1 "Singing orchestra"

Fl. 2 "Singing orchestra"

Picc. "Singing orchestra"

Ob. 1 "Singing orchestra"

Ob. 2 "Singing orchestra"

Ob. 3 "Singing orchestra"

B♭ Cl. 1 "Singing orchestra"

B♭ Cl. 2 "Singing orchestra"

B♭ Cl. 3 "Singing orchestra"

Bsn. 1 "Singing orchestra"

Bsn. 2 "Singing orchestra"

Bsn. 3 "Singing orchestra"

145

Hn. 1 (mute) *pp*

Hn. 2 (mute) *pp*

Hn. 3 (mute) *pp*

Hn. 4 (mute) *pp*

(harmon mute)

C Tpt. 1 *mp* *pp* slow wah-wah effect

C Tpt. 2 "Singing orchestra"

C Tpt. 3 "Singing orchestra"

C Tpt. 4 "Singing orchestra"

T. Tbn. 1 "Singing orchestra"

T. Tbn. 2 "Singing orchestra"

B. Tbn. "Singing orchestra"

B. Tba. "Singing orchestra"

145

Timp. *mp* *pp*

Perc. 1 (triangle) *mp* *pp*

Perc. 2

Perc. 3 (glockenspiel) *pp* *mp* *pp*

Hp. *p* sempre i.v.

Celesta *p*

145

Singing orchestra *gliss.* *gliss.* *p* *gliss.*

145 (sul pont.)

SOLO Vin. I. *mp* *pp* (sul pont.) *pp* *mp* *pp*

GLI ALTRI "Singing orchestra"

Desk 1-3 Vin. II

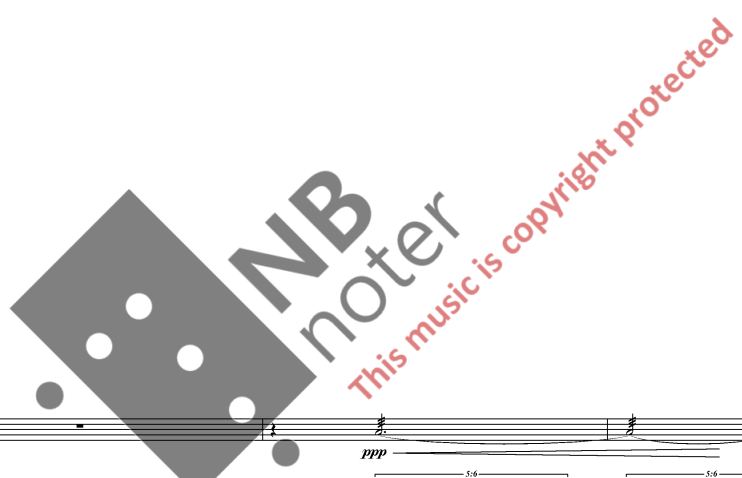
Desk 4-6 "Singing orchestra"

Desk 1-3 Via.

Desk 4-5 "Singing orchestra"

Vic. "Singing orchestra"

Cb.



152

Suona [Music box]

Sheng

152

Fl. 1 "Singing orchestra"

Fl. 2 "Singing orchestra"

Picc. "Singing orchestra"

Ob. 1 "Singing orchestra"

Ob. 2 "Singing orchestra"

Ob. 3 "Singing orchestra"

B♭ Cl. 1 "Singing orchestra"

B♭ Cl. 2 "Singing orchestra"

B♭ Cl. 3 "Singing orchestra"

Bsn. 1 "Singing orchestra"

Bsn. 2 "Singing orchestra"

Bsn. 3 "Singing orchestra"

152

Hr. 1 *pp*

Hr. 2 *mp*

Hr. 3 *pp*

Hr. 4 *mp*

C Tpt. 1 *pp* *slow wah-wah effect*

C Tpt. 2 "Singing orchestra"

C Tpt. 3 "Singing orchestra"

C Tpt. 4 "Singing orchestra"

T. Tbn. 1 "Singing orchestra"

T. Tbn. 2 "Singing orchestra"

B. Tbn. "Singing orchestra"

B. Tba. "Singing orchestra"

152

Timp.

Perc. 1 *pp* *mp* *pp*

Perc. 2 *pp* *ppp*

Perc. 3 *pp* *mp* *pp*

Hp. *sempre lv.* *p* *mf* *mp* *p* *pp*

Celesta *sempre $\text{da} \text{a}$ of fine* *p* *ppp* *p* *pppp* *p*

152

Singing orchestra *gliss.*

SOLO Vln. 1 *pp* *mp* *pp* *[sul pont.]*

GLI ALTRI Vln. II "Singing orchestra"

Desk 1-3 Vln. II "Singing orchestra"

Desk 1-3 Vla. "Singing orchestra"

Desk 4-5 Vln. II "Singing orchestra"

Vic. "Singing orchestra"

Cb.

