

ODDVAR LÖNNER

Lux aeterna

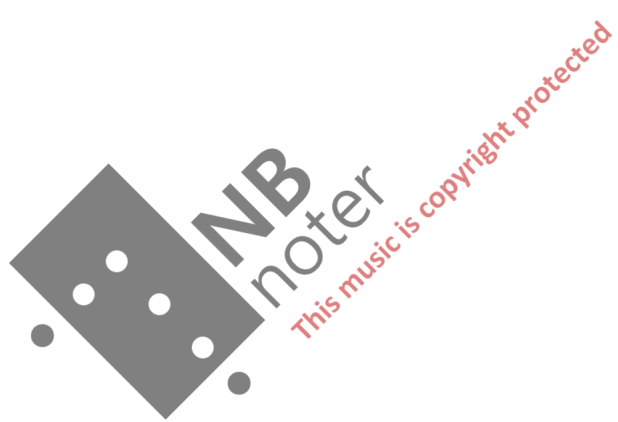
Op. 103

for

blandet kor og orgel
(für gemischten Chor und Orgel)

Til minne om min gode venn
Per Høyen (1952-2009)

Text: Aus der katholischen
Messe und von Oddvar Lønner.
(Latein und deutsch)



Allegro animato (♩ = ca. 126)

Handwritten musical score for the first system. It includes staves for Soprano (S.), Alto (A.), Tenor (T.), and Bass (B.) voices, an Organ (Org.), and a Percussion (X) part. The music is in 4/4 time. The vocal parts are mostly silent, with some notes in the Soprano and Alto parts. The Organ part features a melodic line starting in the second measure, marked *mf*, and a bass line starting in the first measure, marked *pp*. The system concludes with a *f* dynamic marking. A watermark for 'NB noter' is visible across the score.

Handwritten musical score for the second system. It includes staves for Soprano (S.), Alto (A.), Tenor (T.), and Bass (B.) voices, an Organ (Org.), and a Percussion (X) part. The vocal parts are active, with the Soprano and Alto parts singing the word 'Lux'. The Organ part continues with a complex melodic and harmonic texture. The system concludes with a *f* dynamic marking. A watermark for 'NB noter' is visible across the score.

Handwritten musical score for the first system. It features a four-part choir (Soprano, Alto, Tenor, Bass) and organ accompaniment. The lyrics are: "ae - ter -". The organ part includes a complex figure-eight pattern in the right hand and a bass line in the left hand. A watermark "NB noter" is visible over the organ part.

Coro

S. ae - ter -

A. ae - ter -

T. ae - ter -

B. ae - ter -

Org.

Handwritten musical score for the second system. It features a four-part choir (Soprano, Alto, Tenor, Bass) and organ accompaniment. The lyrics are: "na lu - ce - at e - is". The organ part continues with a similar figure-eight pattern. A watermark "NB noter" is visible over the organ part.

Coro

S. na lu - ce - at e - is

A. na lu - ce - at e - is

T. na lu - ce - at e - is

B. na lu - ce - at e - is

Org.

Coro

S. Do - mi - ne ——— Cum Sanc - tis tu - is in ae -

A. Do - mi - ne ——— Cum Sanc - tis tu - is in ae -

T. Do - mi - ne ——— Cum Sanc - tis tu - is in ae -

B. Do - mi - ne ——— Cum Sanc - tis tu - is in ae -

Org.

sempre legato se possibile

Coro

S. ter - num ———: qui - a pi - us

A. ter - num ———: qui - a pi - us

T. ter - num ———: qui - a pi - us

B. ter - num ———: qui - a pi - us

Org.

Allegretto (♩ = ca. 104)

Coro

S. es ———

A. es ———

T. es ———

B. es ———

Re- qui- em ae- ter- nam

Re- qui- em ae- ter- nam

Org.

ritard.

p

Coro

S. do - na e - is

A. do - na e - is

T. do - na e - is

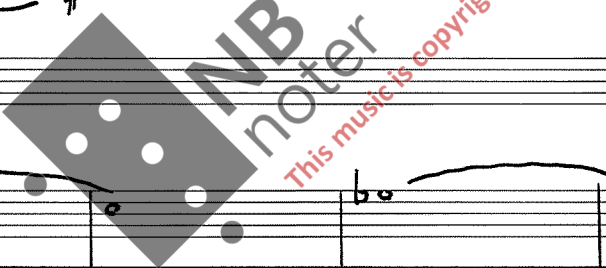
B. do - na e - is

Org.

f

Handwritten musical score for the first system. It features a four-part vocal choir (Soprano, Alto, Tenor, Bass) and an organ accompaniment. The lyrics are "Do - mi - ne". The organ part includes a treble and bass clef with various notes and rests.

Handwritten musical score for the second system. It features a four-part vocal choir (Soprano, Alto, Tenor, Bass) and an organ accompaniment. The lyrics are "et lux per - pe - tu - a lu -". The organ part continues with a treble and bass clef, showing more complex rhythmic patterns.



Handwritten musical score for the first system. It features four vocal staves (Soprano, Alto, Tenor, Bass) and an organ accompaniment. The lyrics are: "ce - at e - is - lu - ce - at e - is -".

Coro

- S. (4) a lu - ce - at e - is -
- A. a lu - ce - at e - is -
- T. ce - at e - is -
- B. ce - at e - is -

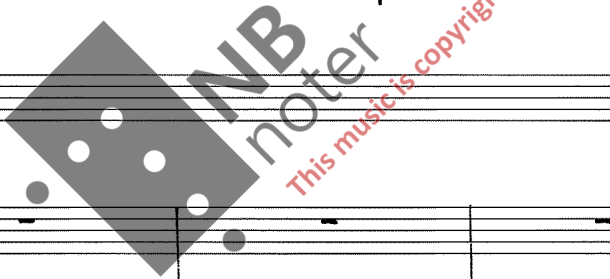
Org.

Handwritten musical score for the second system. It features four vocal staves and an organ accompaniment. The lyrics are: "Cum".

Coro

- S. Cum
- A. Cum
- T. Cum
- B. Cum

Org.



Handwritten musical score for the first system. It features a four-part vocal choir (Soprano, Alto, Tenor, Bass) and an organ accompaniment. The lyrics are: "Sanc - tis tu - is in ae - ter - num". The organ part consists of sustained chords in the right hand and a simple bass line in the left hand. A watermark "NB noter" and "This music is copyright protected" is visible across the score.

Coro

S. *pp*
Sanc - tis tu - is in ae - ter - num

A. *pp*
Sanc - tis tu - is in ae - ter - num

T. *pp*
Sanc - tis tu - is in ae - ter - num

B. *pp*
Sanc - tis tu - is in ae - ter - num

Org.
pp

Handwritten musical score for the second system. It features a four-part vocal choir (Soprano, Alto, Tenor, Bass) and an organ accompaniment. The lyrics are: "qui - a pi - us es". The organ part features more complex chordal textures with some grace notes and slurs. A watermark "NB noter" and "This music is copyright protected" is visible across the score.

Coro

S.
qui - a pi - us es

A.
qui - a pi - us es

T.
qui - a pi - us es

B.
qui - a pi - us es

Org.
pp

Moderato (♩ = ca. 88) - 8 -

Org.

mp Legato

Org.

Coro

S.
A.
T.
B.

Das e - wi - ge
Das e - wi - ge
Das e - wi - ge
Das e - wi - ge

Org.

ff

Coro

S. Licht leuch - te ih - nen, o

A. Licht leuch - te ih - nen, o

T. Licht leuch - te ih - nen, o

B. Licht leuch - te ih - nen, o

Org.

ff

Coro

S. Herr

A. Herr

T. Herr - Bei de - nen Hei - li - gen in - E - wig - keit - , denn du bist

B. Herr

Org.

Handwritten musical score for the first system. It includes staves for Soprano (S.), Alto (A.), Tenor (T.), and Bass (B.) voices, and an Organ (Org.) part. The lyrics for the Tenor part are "mild" and "Herr!". The organ part is marked "pp dolce e sempre legato".

Coro

S. - - - - -

A. - - - - -

T. mild - - - - - bo - - - - - (mf) Herr!

B. - - - - -

Org. pp dolce e sempre legato



Handwritten musical score for the second system. It includes staves for Soprano (S.), Alto (A.), Tenor (T.), and Bass (B.) voices, and an Organ (Org.) part. The lyrics for all vocal parts are "Gib ihnen die ewige Ruhe, und das e-". The organ part continues with complex chordal accompaniment.

Coro

S. Gib ihnen die ewige Ruhe, und das e-

A. Gib ihnen die ewige Ruhe, und das e-

T. Gib ihnen die ewige Ruhe, und das e-

B. Gib ihnen die ewige Ruhe, und das e-

Org.



Handwritten musical score for the first system. It features four vocal parts (Soprano, Alto, Tenor, Bass) and an Organ part. The lyrics are "wi-ge Licht". The organ part includes the instruction "sempre pp".

Coro

S. wi-ge Licht
A. wi-ge Licht
T. wi-ge Licht
B. wi-ge Licht

Org.

sempre pp

Handwritten musical score for the second system. It features four vocal parts (Soprano, Alto, Tenor, Bass) and an Organ part. The lyrics are "leuch-te ih-nen Bei de-nen". The organ part includes the instruction "ff".

Coro

S. leuch-te ih-nen Bei de-nen
A. leuch-te ih-nen Bei de-nen
T. leuch-te ih-nen Bei de-nen
B. leuch-te ih-nen Bei de-nen

Org.

ff

Handwritten musical score for the first system. It features four vocal parts (Soprano, Alto, Tenor, Bass) and an Organ accompaniment. The lyrics are: "Hei- li- gen in E- wig- keit, bis zur". The organ part consists of two staves with a complex rhythmic pattern.

Coro

S. Hei- li- gen in E- wig- keit, bis zur

A. Hei- li- gen in E- wig- keit, bis zur

T. Hei- li- gen in E- wig- keit, bis zur

B. Hei- li- gen in E- wig- keit, bis zur

Org.

Handwritten musical score for the second system. It features four vocal parts (Soprano, Alto, Tenor, Bass) and an Organ accompaniment. The lyrics are: "Stun- de der neu- en Ge- burt". The organ part continues with a similar rhythmic pattern. A watermark "NB noter" and "This music is copyright protected" is visible over the score.

Coro

S. Stun- de der neu- en Ge- burt

A. Stun- de der neu- en Ge- burt

T. Stun- de der neu- en Ge- burt

B. Stun- de der neu- en Ge- burt

Org.

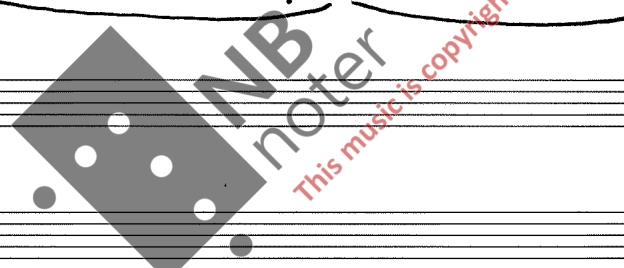
Handwritten musical score for the first system. It includes four vocal staves labeled S. (Soprano), A. (Alto), T. (Tenor), and B. (Bass), grouped under the label "Coro". The organ part is written on a grand staff (treble and bass clefs). The organ accompaniment consists of a rhythmic pattern of eighth notes in the right hand and a simpler bass line in the left hand. The vocal staves are mostly empty, with a few notes in the Alto part at the beginning.

Handwritten musical score for the second system. It includes the same four vocal staves (S., A., T., B.) and organ part. The vocal staves contain the lyrics: "in der - sel - ben" repeated for each voice part. The organ part continues with the same rhythmic pattern. The organ part includes the instruction "sempre ff" (sempre fortissimo) written in the right and left hands. A large watermark "NB noter" and "This music is copyright protected" is overlaid on the page.

Handwritten musical score for the first system. It features four vocal staves (Soprano, Alto, Tenor, Bass) and an organ accompaniment. The lyrics for the vocal parts are "E - wig - keit". The organ part consists of two staves with a complex melodic and harmonic texture. A watermark "NB noter" is visible across the organ part.

Handwritten musical score for the second system. It features four vocal staves (Soprano, Alto, Tenor, Bass) and an organ accompaniment. The lyrics for the vocal parts are "in der - sel - ben E -". The organ part continues with similar complexity. A watermark "NB noter" is visible across the organ part.

The image shows a handwritten musical score for a choir and organ. The choir part, labeled 'Coro', consists of four staves for Soprano (S.), Alto (A.), Tenor (T.), and Bass (B.). Each staff begins with a treble clef and a key signature of one flat (Bb). The lyrics 'wig - keit' are written below the notes. The organ part, labeled 'Org.', consists of three staves: a right-hand part with a treble clef and a left-hand part with a bass clef. The organ part features a complex rhythmic pattern of eighth and sixteenth notes. The score concludes with a double bar line and the word 'Fine.' written below the organ part.



10. V. 20

Fine. 