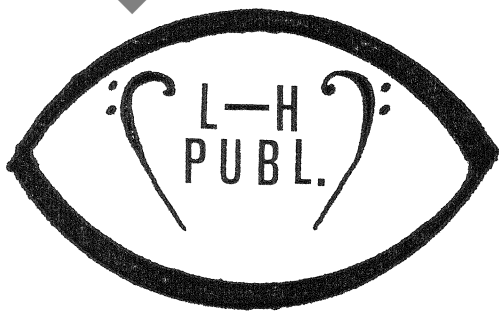
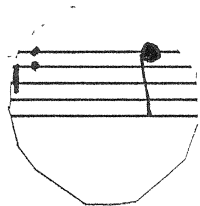
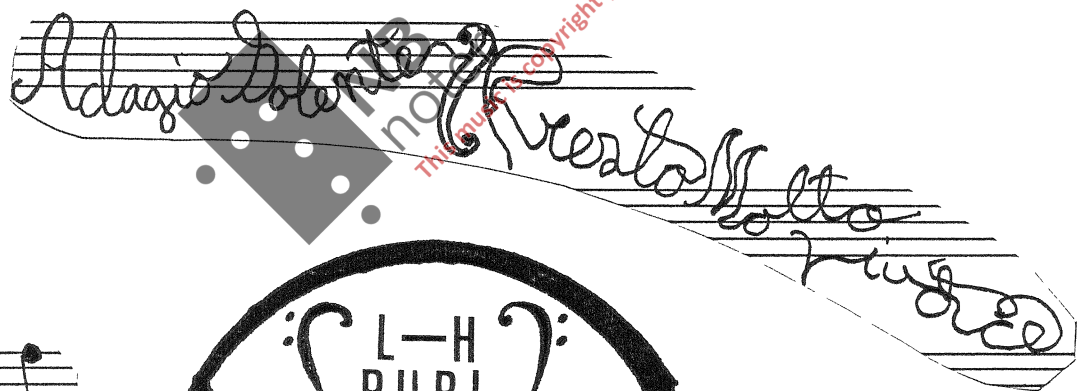


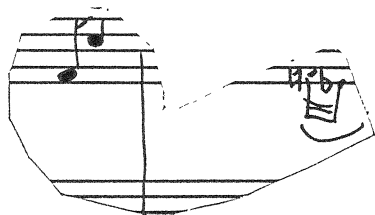
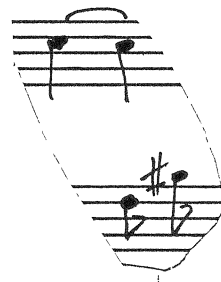
Trond Lindheim

**« 2 DUE T T E R
FOR KLARINETTER »**

OP. 5

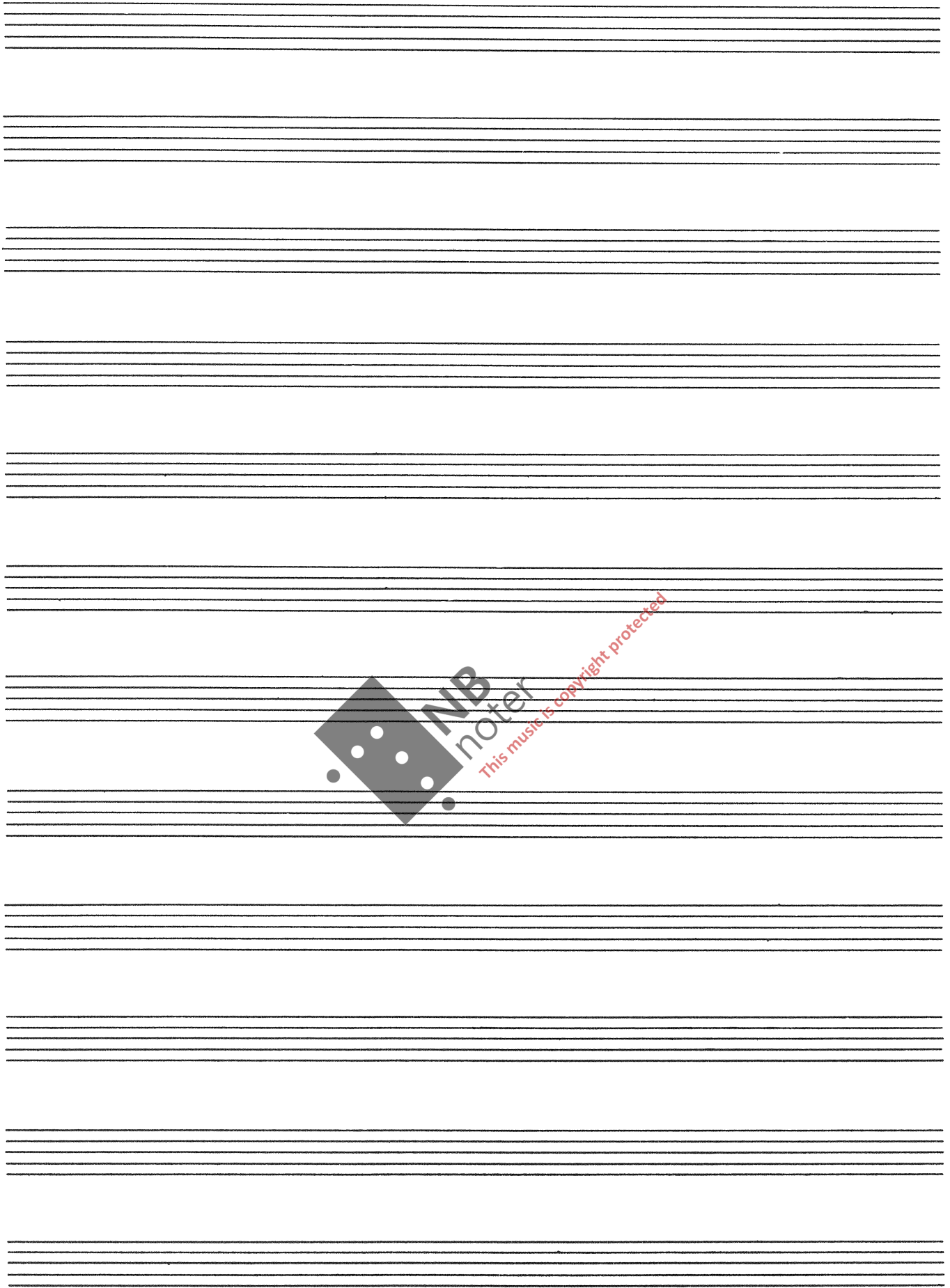


SARPSBORG.



DEDIKERT TIL: Mary - Anne Gullhaugen





NB
noter
This music is copyright protected

Adagio dolendo

I. IKKE MARY-ANNE

1. *mp* 1. voce: molto legato
2. voce: sempre tenuto

2. voce: legato

2. voce: tenuto

mf et piu mosso

Watermark: NB noter This music is copyright protected

Handwritten musical score for the first system, featuring a treble and bass clef. The treble clef part includes a slur over the first few notes with the instruction "non legato" written above it. The bass clef part has a slur with "accelerando sf" written above it. A "rit." (ritardando) instruction is written in a box at the end of the system.

Handwritten musical score for the second system. The treble clef part begins with the instruction "a tempo (Adagio dolendo)". The bass clef part continues with a steady accompaniment.

Handwritten musical score for the third system. The treble clef part features several triplet markings (indicated by a bracket with the number 3) over groups of notes. The bass clef part continues with a steady accompaniment.

Handwritten musical score for the fourth system. The treble clef part has multiple triplet markings. The bass clef part includes the instruction "pp et molto dolendo" written above it.

Handwritten musical score for the fifth system. The treble clef part shows changes in time signature, with markings for 7/8, 6/8, 7/8, and 6/8. The bass clef part continues with a steady accompaniment.

Handwritten musical score for the sixth system, which serves as an introduction to the next section. It features a treble and bass clef with a key signature change to one flat (F major/D minor) and a time signature change to 2/4. The instruction "attacca" is written to the right of the system.

Combrío (molto più mosso)

2/4 p mp mf attacca

II. MARY-ANNE

Prestomolto vivace

f sfz cantabile

2.satsen gir et musikalsk uttrykk for den beskrivelse Bjørn Syversen har gitt meg av Mary-Anne Gullhaugen. 1.satsen er et absolutt motstykke. Stykket er forøvrig tilegnet henne.

Trond Lindheim
Sarpsborg 27/3-1982.

Handwritten musical score system 1. It consists of two staves. The top staff is in treble clef with a key signature of one sharp (F#) and a time signature of 5/8. The bottom staff is in bass clef with the same key signature and time signature. The music features various rhythmic patterns, including eighth and sixteenth notes. A circled section in the first measure of the top staff contains a complex chordal structure. The system ends with a dynamic marking of *p* (piano).

Handwritten musical score system 2. It consists of two staves. The top staff is in treble clef with a key signature of one sharp (F#). The bottom staff is in bass clef with the same key signature. The music features a steady eighth-note accompaniment in the bass. The top staff has a melodic line with slurs and accents. Dynamic markings include *mp* (mezzo-piano) and *mf* (mezzo-forte).

Handwritten musical score system 3. It consists of two staves. The top staff is in treble clef with a key signature of one sharp (F#). The bottom staff is in bass clef with the same key signature. The music features a melodic line with slurs and accents. Dynamic markings include *f* (forte). There are handwritten annotations: "glissando" above a wavy line in the top staff and "gliss." above a similar line in the bottom staff. Triplet markings are present in both staves.

Handwritten musical score system 4. It consists of two staves. The top staff is in treble clef with a key signature of one sharp (F#). The bottom staff is in bass clef with the same key signature. The music features a melodic line with slurs and accents. Dynamic markings include *molto glissando* and *ff* (fortissimo). There is a large watermark in the center of the page that reads "MP3 notes" and "This music copyright protected".

Handwritten musical score system 5. It consists of two staves. The top staff is in treble clef with a key signature of one sharp (F#). The bottom staff is in bass clef with the same key signature. The music features a melodic line with slurs and accents. Dynamic markings include *con fuoco* (with fire).

Handwritten musical score system 6. It consists of two staves. The top staff is in treble clef with a key signature of one sharp (F#). The bottom staff is in bass clef with the same key signature. The music features a melodic line with slurs and accents. Dynamic markings include *mf* (mezzo-forte). The system ends with a double bar line.