

Durata: ca. 7'30")

"Straumkrødet"

T.B.L. Op. 91 E

Alligro appassionato (♩ = 50), un poco rubato

B^b Clarinet
Tuba
Piano

f cantabile
f poco marcato

pp molto espressivo
con Pad.

Handwritten musical score for the first system. It consists of a grand staff with a treble clef on the top line and a bass clef on the bottom line. The music is written in a key with one flat (B-flat) and a 4/4 time signature. The first staff contains a melodic line with various notes and rests, including a measure with a '2' in a box. The second staff contains a bass line with notes and rests. The third staff contains a piano accompaniment with chords and arpeggiated figures.

Handwritten musical score for the second system. It continues the piece with a grand staff and a second staff. The notation includes various musical symbols such as notes, rests, and accidentals. A large watermark is visible across the center of the page.

Handwritten musical score for the third system. It continues the piece with a grand staff and a second staff. The notation includes various musical symbols such as notes, rests, and accidentals. A large watermark is visible across the center of the page.

Handwritten musical score, first system. It consists of two staves. The top staff has a treble clef and a key signature of one flat (B-flat). The bottom staff has a bass clef and a key signature of one sharp (F-sharp). The music is written in a complex, rhythmic style with many accidentals and slurs. A circled number '3' is present in the second measure of the top staff. A handwritten note '(6b F C ov.)' is written above the top staff in the final measure.

Handwritten musical score, second system. It consists of two staves. The top staff has a treble clef and a key signature of one flat. The bottom staff has a bass clef and a key signature of one sharp. The music is highly rhythmic and complex. A large watermark 'IMBiber' is overlaid diagonally across the system. Performance markings include 'p' (piano), 'molto', 'staccatissimo', and 'staccatissimo'. A 'loco' marking is present at the end of the system.

Handwritten musical score, third system. It consists of two staves. The top staff has a treble clef and a key signature of one flat. The bottom staff has a bass clef and a key signature of one sharp. The music is less complex than the previous systems. Performance markings include 'p cantando (creante)', 'pp', 'loco', 'p cantando (creante)', and 'ppstacc., leggero'.

Handwritten musical score for the first system. It consists of three staves. The top staff is a treble clef with a key signature of one flat and a common time signature. The middle staff is a bass clef with the same key signature and time signature. The bottom staff is a grand staff with a treble clef and a bass clef, also with the same key signature and time signature. The music includes various notes, rests, and dynamic markings such as *mp*. There are also some handwritten annotations like "gua" and "mp".

Handwritten musical score for the second system. It consists of three staves. The top staff is a treble clef with a key signature of one flat and a common time signature. The middle staff is a bass clef with the same key signature and time signature. The bottom staff is a grand staff with a treble clef and a bass clef, also with the same key signature and time signature. The music includes various notes, rests, and dynamic markings such as *p. sub., stacc., legg.* and *mf cantabile, sostenuto*. There are also some handwritten annotations like "loco" and "mf cantabile, sostenuto".

Handwritten musical score for the third system. It consists of three staves. The top staff is a treble clef with a key signature of one flat and a common time signature. The middle staff is a bass clef with the same key signature and time signature. The bottom staff is a grand staff with a treble clef and a bass clef, also with the same key signature and time signature. The music includes various notes, rests, and dynamic markings such as *p. sub., marcatisimo*. There are also some handwritten annotations like "p. sub., marcatisimo".

Handwritten musical score for strings and piano. The score includes staves for Violins I and II, Violas, Cellos, and Double Basses, along with a grand piano part. The music is characterized by complex rhythmic patterns and frequent key changes. Performance instructions include *martellatissimo* and *amatellatissimo*. The tempo markings are *poco rit...*, *a tempo*, *poco rit...*, and *accelerando...*. The piece concludes with the word *gloria* and a *loco* marking.

Handwritten musical score for Clarinet in B-flat (Cl.) and Trombone (Tb.) and Piano. The woodwind parts feature intricate melodic lines with many accidentals. The piano part provides harmonic support with chords and arpeggios. Performance instructions include *marcatissimo!*, *md.*, *m.s.*, *dim.*, and *p*. The tempo markings are *poco rit...*, *a tempo*, *poco rit...*, and *accelerando...*. The piece concludes with the word *gloria* and a *loco* marking.

Handwritten musical score for Clarinet in B-flat (Cl.) and Trombone (Tb.) and Piano. The woodwind parts feature intricate melodic lines with many accidentals. The piano part provides harmonic support with chords and arpeggios. Performance instructions include *mp espressivo, a piacere*, *ppp*, *loco marcatissimo!!*, and *gloria*. The tempo markings are *In tempo rubato (colla parte)* and *In tempo stricto*. The piece concludes with the word *gloria* and a *loco* marking.

Poco meno allegro

10

p espressivo, dolce

pp misterioso, sostenuto

pp dolce, senza espressione

poco accel.

molto rit.

Tempo I

11

12

mp cresc. - 3

mp cresc.

mp cresc.

Handwritten musical score for system 12. The system consists of two staves. The upper staff is in treble clef and contains a melodic line with various rhythmic values and accidentals. The lower staff is in bass clef and contains a bass line with chords and rhythmic accompaniment. The system is marked with a circled number '12' at the beginning. Dynamics include *sub p leggiero* and *Lurioso*. The key signature has one sharp (F#).

Handwritten musical score for system 13. The system consists of two staves. The upper staff is in treble clef and contains a melodic line with various rhythmic values and accidentals. The lower staff is in bass clef and contains a bass line with chords and rhythmic accompaniment. The system is marked with a circled number '13' at the beginning. Dynamics include *p leggiero*, *Al marcattissima*, *Al martellatissimo*, and *Al marcatissimo*. The key signature has one sharp (F#).

Handwritten musical score for system 14. The system consists of two staves. The upper staff is in treble clef and contains a melodic line with various rhythmic values and accidentals. The lower staff is in bass clef and contains a bass line with chords and rhythmic accompaniment. The system is marked with a circled number '14' at the beginning. Dynamics include *Al marcatissimo* and *Al martellatissimo*. The key signature has one sharp (F#).

Handwritten musical score for piano, consisting of three systems of staves. The score includes various musical notations such as treble and bass clefs, time signatures, and dynamic markings.

System 1: Features a treble staff with a key signature of one sharp (F#) and a bass staff. The music includes a melodic line with a *ritardando* marking and a piano introduction marked *pdin.* with a *pp* dynamic. The piano accompaniment consists of dense chords and triplets.

System 2: Continues the melodic and piano accompaniment. It includes a *ritardando* marking and a *con Ped!* instruction. The piano part features a prominent triplet pattern.

System 3: The final system, marked with a circled number 15. It includes a *ritardando* marking and a *pp* dynamic. The melodic line is marked *cantabile* and *ritardando*. The piano accompaniment continues with triplets and chords.

A large watermark "NB Moter" is visible across the middle of the page, along with the text "this music is copyright protected".

Handwritten musical score for measures 14-16. The system consists of three staves. The top staff is a treble clef with a key signature of two sharps (F# and C#) and a 3/4 time signature. The middle staff is an alto clef. The bottom staff is a grand staff (treble and bass clefs). The music features complex rhythmic patterns, including triplets and sixteenth notes. A dynamic marking of *p* (piano) is present in measure 15. A watermark "this music copyright protected" is visible across the score.

Handwritten musical score for measures 16-17. The system consists of three staves. The top staff is a treble clef with a key signature of two sharps (F# and C#) and a 3/4 time signature. The middle staff is an alto clef. The bottom staff is a grand staff (treble and bass clefs). The music features complex rhythmic patterns, including triplets and sixteenth notes. A dynamic marking of *p maestoso* is present in measure 16. A watermark "this music copyright protected" is visible across the score.

Handwritten musical score for measures 17-20. The system consists of three staves. The top staff is a treble clef with a key signature of two sharps (F# and C#) and a 3/4 time signature. The middle staff is an alto clef. The bottom staff is a grand staff (treble and bass clefs). The music features complex rhythmic patterns, including triplets and sixteenth notes. A dynamic marking of *cresc.* (crescendo) is present in measure 17. A watermark "this music copyright protected" is visible across the score.

Handwritten musical score for the first system, measures 14-15. The system consists of three staves: a treble clef staff, a bass clef staff, and a grand staff (treble and bass clefs). The treble clef staff contains a melodic line with slurs and accents. The bass clef staff contains a bass line with triplets and slurs. The grand staff contains a complex accompaniment with many notes and slurs. Measure numbers 14 and 15 are written below the grand staff.

Handwritten musical score for the second system, measures 16-18. The system consists of three staves: a treble clef staff, a bass clef staff, and a grand staff. The treble clef staff has a melodic line with a fermata over measure 18. The bass clef staff has a bass line with slurs. The grand staff contains a complex accompaniment. A large watermark "MIB" is visible across the system. The text "G.P. (18)" is written above measure 18. The text "molto tenuto" and "molto tenuto" are written below the grand staff in measures 17 and 18 respectively.

Handwritten musical score for the third system, measures 19-21. The system consists of three staves: a treble clef staff, a bass clef staff, and a grand staff. The treble clef staff has a melodic line with slurs and accents. The bass clef staff has a bass line with slurs. The grand staff contains a complex accompaniment. The text "molto esp." is written above the grand staff in measure 20. The text "pp" is written below the grand staff in measures 20 and 21.

20

Handwritten musical score for the first system. It consists of two staves. The upper staff is in treble clef and contains several measures of music with notes and rests. The lower staff is in bass clef and contains corresponding notes and rests. The music is marked with *ppp! misterioso* and *pp cresc.* in both staves.

Handwritten musical score for the second system. It consists of two staves. The upper staff is in treble clef and contains several measures of music with notes and rests. The lower staff is in bass clef and contains corresponding notes and rests. The music is marked with *mp cresc poco a poco* and *pp cresc.* in both staves. A large watermark is visible across the page.

20

Handwritten musical score for the third system. It consists of two staves. The upper staff is in treble clef and contains several measures of music with notes and rests. The lower staff is in bass clef and contains corresponding notes and rests. The music is marked with *ff furioso, senza dim.* and *i loco* in both staves.

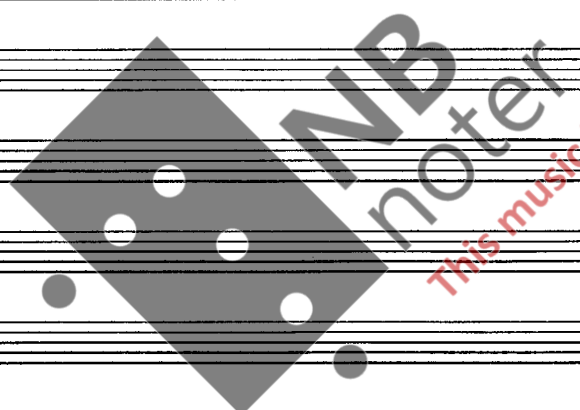
Handwritten musical score for the first system. The top staff is in treble clef, showing a melodic line with various intervals and accidentals. The bottom staff is in bass clef, featuring a sustained accompaniment with a long horizontal line. The word "ritardando" is written in the bass staff.

Handwritten musical score for the second system. The top staff is in treble clef, showing a melodic line with various intervals and accidentals. The bottom staff is in bass clef, featuring a complex accompaniment with many notes and accidentals. The word "pp" is written in the bass staff.

Handwritten musical score for the third system. The top staff is in treble clef, showing a melodic line with various intervals and accidentals. The bottom staff is in bass clef, featuring a complex accompaniment with many notes and accidentals. The word "ff martellatissimo" is written in the bass staff.

f *p*

-1980
Prindal 1/4 kl 0117
[Signature]



This music is copyright protected