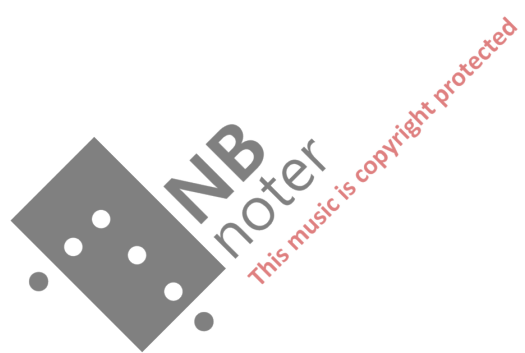


Terje Bb Lerstad
Op.214

9 KLAUSTROPIEDIER



DURATA: 8'13"



$\text{♩} = 60$

Handwritten musical score for the first system. It consists of two staves. The upper staff contains a melodic line with eighth-note patterns and some slurs. The lower staff contains a bass line with chords and some triplets. Dynamics include *p*, *mp*, and *mf*. There are some handwritten annotations like "57" above the notes.

Handwritten musical score for the second system. It consists of two staves. The upper staff has a melodic line with slurs and some triplets. The lower staff has a bass line with chords. Dynamics include *p* and *pp*. A large watermark "NB notepad" is overlaid on the score.

Handwritten musical score for the third system. It consists of two staves. The upper staff has a melodic line with slurs and some triplets. The lower staff has a bass line with chords. Dynamics include *ff* and *p*. The system ends with the instruction "attacca!".

113"

♩ = 56

Handwritten musical score for the first system. It consists of two staves. The upper staff is in treble clef and contains a melodic line with dynamics *f*, *p*, and *mf*. The lower staff is in bass clef and contains a bass line with dynamics *f* and *mf*. There are handwritten annotations: *(ped. sempre)* with an arrow pointing to the first measure, *sbassa!* (Loco) under the first measure, and *sbassa!* under the second measure. A '6' is written under the first measure of both staves.

Handwritten musical score for the second system. It consists of two staves. The upper staff is in treble clef and contains a melodic line with dynamics *p* and *pp*. The lower staff is in bass clef and contains a bass line with dynamics *pp* and *pp*. There are handwritten annotations: *gra---* above the first measure, *sbassa---* under the first measure, *sbassa---* under the second measure, and *sbassa---* under the third measure. A watermark 'NB noter' is visible across the system.

Handwritten musical score for the third system. It consists of two staves. The upper staff is in treble clef and contains a melodic line with dynamics *ppp* and *pppp*. The lower staff is in bass clef and contains a bass line with dynamics *ppp* and *ppp*. There are handwritten annotations: *8b---* under the first measure, *gra---* above the second measure, *sbassa---* under the second measure, and *sbassa---* (Loco) *attacca!* under the third measure. A watermark 'NB noter' is visible across the system.

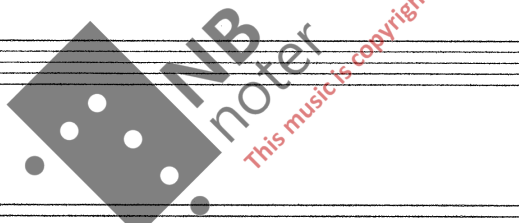
46"

$\text{♩} = 72$

Handwritten musical score for the first system, consisting of two staves. The upper staff is in treble clef with a key signature of two flats (B-flat, E-flat) and a 4/4 time signature. It contains six measures of music, including a triplet of eighth notes in the third measure. The lower staff is in bass clef with a key signature of one sharp (F#) and a 4/4 time signature. It contains six measures of music, including a triplet of eighth notes in the third measure. Dynamics include 'p' (piano) at the start and 'pp' (pianissimo) at the end of the first system.

Handwritten musical score for the second system, consisting of two staves. The upper staff is in treble clef with a key signature of one sharp (F#) and a 4/4 time signature. It contains five measures of music. The lower staff is in bass clef with a key signature of one sharp (F#) and a 4/4 time signature. It contains five measures of music. Dynamics include 'ff' (fortissimo), 'mp' (mezzo-piano), 'pp' (pianissimo), and 'ff' (fortissimo) across the measures.

Handwritten musical score for the third system, consisting of two staves. The upper staff is in treble clef with a key signature of two flats (B-flat, E-flat) and a 4/4 time signature. It contains one measure of music with a dynamic of 'pp' (pianissimo). The lower staff is in bass clef with a key signature of two flats (B-flat, E-flat) and a 4/4 time signature. It contains one measure of music with a dynamic of 'pp' (pianissimo) and the instruction 'attacca!' written below it.



1'04"

$\text{♩} = 93$

Handwritten musical score for the first system. It consists of two staves: a piano staff (treble clef) and a bass staff (bass clef). The piano staff contains complex chords with accidentals (sharps, flats, naturals) and dynamic markings such as *ff*, *f*, *mf*, and *mp*. There are also markings for *grava* (grave) and accents. The bass staff contains simpler chords and notes. A bracket under the bass staff is labeled "(Ped. sempre)".

rit. poco a poco

Handwritten musical score for the second system. It continues the piano and bass staves from the first system. The piano staff has dynamic markings *mp*, *ff*, and *p*. The bass staff has dynamic markings *mp* and *p*. The tempo marking *rit. poco a poco* is written above the system. There are also *grava* markings and accents.

Handwritten musical score for the third system. It continues the piano and bass staves. The piano staff has dynamic markings *pp* and *ff dim.*. The bass staff has dynamic markings *pp* and *ff dim.*. A separate bass line is written below the bass staff, starting with the instruction *8bassa!*. A large watermark "NB noter" and "This music is copyright protected" is overlaid on the system.

$\text{---} \text{♩} = 34$

Handwritten musical score for the fourth system. It consists of two staves: a piano staff (treble clef) and a bass staff (bass clef). The piano staff has a triplet of notes marked with a bracket and the number 3. The bass staff has a triplet of notes marked with a bracket and the number 3. The tempo marking $\text{---} \text{♩} = 34$ is written above the system. The system ends with the instruction *attacca!*.

1'22"

$\text{♩} = 52$

Handwritten musical score for the first system. It consists of two staves: a piano staff (treble clef) and a bass staff (bass clef). The music is written in a 4/4 time signature. The piano staff contains several measures of music with notes and rests, marked with dynamics *PPP* and *PP*. The bass staff contains corresponding notes and rests, also marked with *PPP* and *PP*. There are handwritten annotations: a bracket under the first measure of the piano staff with the text "(Ped. sempre) una corda" below it, and a circled "0" with a plus sign under the first measure of the bass staff.

Handwritten musical score for the second system. It consists of two staves: a piano staff (treble clef) and a bass staff (bass clef). The piano staff has notes and rests with dynamics *PPP* and *P*. There are markings "grv" above the piano staff in several places. The bass staff has notes and rests with dynamics *PPP* and *P*. There is a circled "0" with a plus sign under the first measure of the bass staff.

Handwritten musical score for the third system. It consists of two staves: a piano staff (treble clef) and a bass staff (bass clef). The piano staff has notes and rests with dynamics *PPPP* and *PPP*. The bass staff has notes and rests with dynamics *PPPP* and *PPP*. There is a circled "0" with a plus sign under the first measure of the bass staff. At the end of the system, there is a bracket under the bass staff with the text "senza ped.!" and "tre corde" below it.

♩ = 114

Handwritten musical score for the first system. The treble staff begins with a piano (*pp*) dynamic and a half note chord. The bass staff has a similar starting point. The piece progresses through several measures with complex chordal textures and melodic lines. Dynamics include *pp*, *p*, and *mf*. A note is marked with a fermata. The system concludes with a *mf* dynamic.

(ped. normale)

Handwritten musical score for the second system. The treble staff features a *mf* dynamic and a melodic line with accents. The bass staff has a *mf* dynamic and a bass line. Dynamics include *mf*, *mp, dim.*, *pp*, and *mp*. There are several accents and a fermata in the treble staff. The system ends with a *mf* dynamic.



Handwritten musical score for the third system. The treble staff has a *mf* dynamic and a melodic line. The bass staff has a *pp* dynamic and a bass line. Dynamics include *mp*, *pp*, and *mf*. There are accents and a fermata in the treble staff. The system ends with a *mp* dynamic.

Handwritten musical score for the fourth system. The treble staff has a *mp, dim.* dynamic and a melodic line. The bass staff has a *pp* dynamic and a bass line. Dynamics include *mp, dim.*, *pp*, and *mf*. There are accents and a fermata in the treble staff. The system ends with a *pp* dynamic.

attacca!

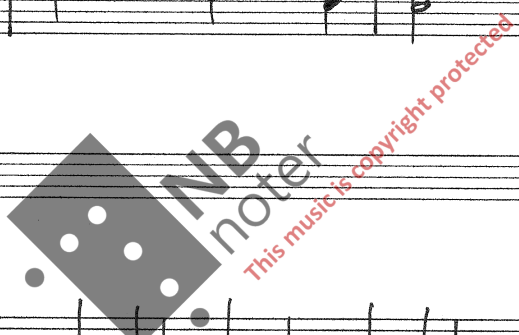
$\text{♩} = 80$

Handwritten musical score system 1. It features a grand staff with treble and bass clefs. The first measure contains a piano introduction with a forte (*ff*) dynamic and a tempo marking of *4p.*. The right hand plays a melodic line with a slur and a fingering of 5. The left hand plays a bass line with a 5. The subsequent measures show a transition to a piano (*pp*) dynamic with various chords and melodic fragments.

Handwritten musical score system 2. It continues the piece with a forte (*ff*) dynamic and *4p.* tempo. The right hand has a melodic line with a slur and a fingering of 5. The left hand plays chords with a mezzo-piano (*mp*) dynamic.

Handwritten musical score system 3. It features a forte (*ff*) dynamic and *4p.* tempo. The right hand has a melodic line with a slur and a fingering of 5. The left hand plays chords with a mezzo-forte (*mf*) dynamic.

Handwritten musical score system 4. It features a forte (*ff*) dynamic and *4p.* tempo. The right hand has a melodic line with a slur and a fingering of 5. The left hand plays chords with a forte (*f*) dynamic. The system concludes with a double bar line and the instruction "attacca!".



16''

$\text{♩} = 120$

pp

$\frac{3}{4}$ Ped. sempre

grv

grv

grv

attacca!

1'27"

$\text{♩} = 66$

Handwritten musical score for the first system. The bass line is marked "gbassa" and includes dynamic markings like "(pp)" and "pp". The treble line has complex chordal textures with accidentals and slurs.

Handwritten musical score for the second system. It includes dynamic markings "pp" and "ff", and the bass line is again marked "gbassa".

Handwritten musical score for the third system, concluding the piece. It features dynamic markings "pp", "ppp", and "ppppp", and the bass line is marked "gbassa". The piece ends with a double bar line.

St. Hanshaugen
13/12-05
M.B. Jørgensen

- o) Silently pressed down
- 1) On the beat