

— Intermezzo —

for Flute, Clarinet, Trombone, Marimba, Violine & Double Bass

GISLE KVERNDOKK
1991



This music is copyright protected



Intermezzo

for Flute, Clarinet, Trombone, Marimba, Violine & Double Bass

GISLE KVERNDOKK
1991

Andante

Flute in C

Clarinet in B \flat

Trombone

Marimba

Violine

Double Bass

(A)

Fl. *mp*

Cl. *mp*

Trb. *st. mute* *P*

Mar. *P* *mf*

Vln. *P*

Db.

NB *noter* *This music is copyright protected*

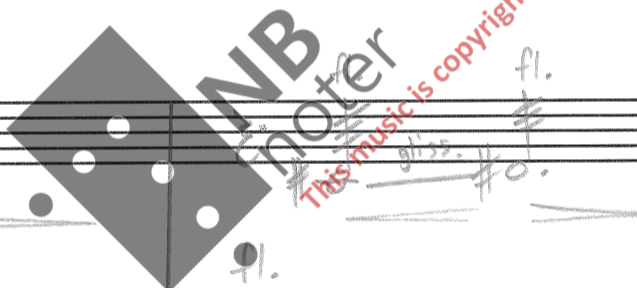
Handwritten musical score for the first system, consisting of six staves. The notation includes various notes, rests, and dynamic markings such as *p*, *f*, *gliss.*, and *fp*. There are also some handwritten annotations like '3' and '6' above notes. The staves are arranged in a system with a brace on the left.

Handwritten musical score for the second system, consisting of six staves. The notation includes notes, rests, and dynamic markings such as *p*. A large watermark is overlaid on the score, reading "NB noter" and "This music is copyright protected". The staves are arranged in a system with a brace on the left.

(B) a tempo

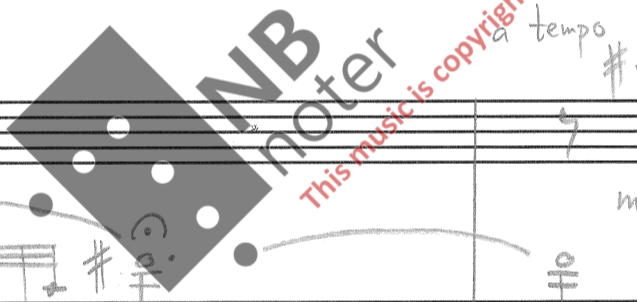
Handwritten musical score for the first system, consisting of five staves. The top staff is a treble clef with a 3/4 time signature, containing notes with accidentals and dynamics like *fl.* and *pp*. The second staff is a treble clef with a 4/4 time signature, labeled "air pressure (no pitch)" and contains circled 'x' marks. The third staff is a bass clef with a 3/4 time signature, labeled "a tempo" and contains circled 'x' marks. The fourth staff is a treble clef with a 3/4 time signature, labeled "a tempo" and contains notes with dynamics like *P* and *pp*. The fifth staff is a bass clef with a 4/4 time signature, labeled "a tempo" and contains notes with dynamics like *pp*. The system is divided into three measures by vertical bar lines.

Handwritten musical score for the second system, consisting of five staves. The top staff is a treble clef with a 3/4 time signature, containing notes with accidentals and dynamics like *fl.* and *pp*. The second staff is a treble clef with a 4/4 time signature, labeled "air pressure (no pitch)" and contains circled 'x' marks. The third staff is a bass clef with a 3/4 time signature, labeled "a tempo" and contains notes with dynamics like *P* and *pp*. The fourth staff is a treble clef with a 3/4 time signature, labeled "a tempo" and contains notes with dynamics like *P* and *pp*. The fifth staff is a bass clef with a 4/4 time signature, labeled "a tempo" and contains notes with dynamics like *P* and *pp*. The system is divided into three measures by vertical bar lines.



Handwritten musical score for the first system. It consists of two systems of staves. The first system has a treble staff with notes and rests, including a *mf* dynamic marking. The second system has a bass staff with notes and rests, including a *pp* dynamic marking. There are also some handwritten annotations like "trb" and "3" (triplets).

Handwritten musical score for the second system. It continues the piece with treble and bass staves. The first part of this system has a treble staff with notes and rests, including a *p* dynamic marking. The second part has a treble staff with notes and rests, including a *mp* dynamic marking and the instruction "a tempo". The bass staff also has "a tempo" markings. There are some handwritten annotations like "3" and "4" (possibly indicating fingerings or counts).



D

6

Handwritten musical score for the first system, measures 1-4. The score consists of five staves. The first staff is in treble clef with a 3/4 time signature, marked with a key signature of one sharp (F#) and dynamics *pp*. The second staff is in treble clef with a 4/4 time signature, marked with *pp* and containing a triplet of eighth notes. The third staff is in bass clef with a 3/4 time signature, marked with *pp* and containing a triplet of eighth notes. The fourth staff is in treble clef with a 4/4 time signature, marked with *arco* and *p*. The fifth staff is in bass clef with a 3/4 time signature, marked with *p*. The key signature changes to two sharps (F# and C#) in the second measure. The tempo marking *poco rit.* appears in the third measure.

Handwritten musical score for the second system, measures 5-8. The score consists of five staves. The first staff is in treble clef with a 4/4 time signature, marked with *a tempo* and *p*. The second staff is in treble clef with a 4/4 time signature, marked with *a tempo* and *p*. The third staff is in bass clef with a 4/4 time signature, marked with *a tempo* and *st. mute*. The fourth staff is in treble clef with a 4/4 time signature, marked with *arco* and *a tempo*. The fifth staff is in bass clef with a 4/4 time signature, marked with *a tempo* and *p*. The key signature changes to two sharps (F# and C#) in the second measure. The tempo marking *a tempo* is repeated in the second, third, and fourth measures. Performance instructions include *st. mute*, *fl.*, *gliss.*, *fz*, and *fp*. The system concludes with a double bar line and a fermata.



air pressure

key slap

key slap

sharp attack
no pitch

gliss

Pizz.

(E)

sempre f

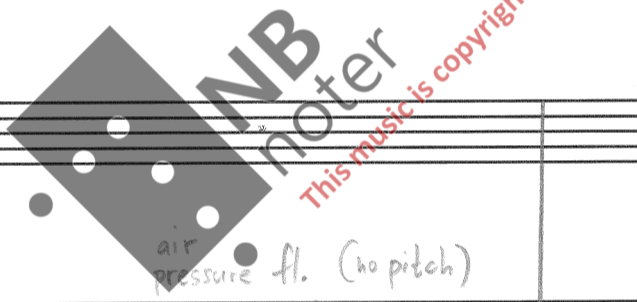
sempre f

sempre f

Pizz.

sempre f

Handwritten musical score for the first system, consisting of six staves. The notation includes various notes, rests, and performance markings such as accents (>), dynamics (p), and articulation marks. The first two staves are in treble clef, and the last two are in bass clef. The middle two staves are empty.



Handwritten musical score for the second system, consisting of six staves. The notation includes notes, rests, and performance markings such as dynamics (pp) and articulation marks. The first two staves are in treble clef, and the last two are in bass clef. The middle two staves are empty.

air pressure fl. (no pitch)

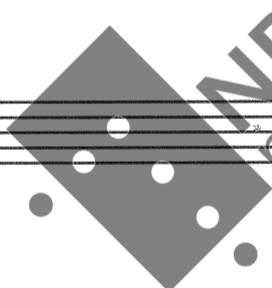
Pizz.

pp

Handwritten musical notation on a system of four staves. The notation includes:

- Staff 1 (Treble clef): A sharp sign (#) on the first line, a circled note on the second line, and the dynamic marking "pp".
- Staff 2 (Treble clef): A circled note on the second line.
- Staff 3 (Bass clef): A circled note on the second line.
- Staff 4 (Bass clef): A circled note on the second line.

A vertical bar line is present between the first and second measures of the system.



NB
noter

This music is copyright protected