

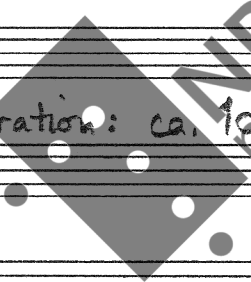
STATEMENT

for saxophone quartet

by

Björn Kruus '75

Duration: ca. 19 min



This music is copyright protected

# I

II

*Rubato*

S  
A  
T  
B

S  
A  
T  
B

ato  $\text{♩} = \text{ca. } 112$

**A**

S  
A  
T  
B



Soprano (S), Alto (A), Tenor (T), Bass (B) vocal staves with piano accompaniment. The music is in a key with two flats (B-flat major or D minor) and a 3/4 time signature. The lyrics "Cres - - - - - can - - - - -" are written below the bass staff. Dynamics include piano (p) and crescendo (cres).

Soprano (S), Alto (A), Tenor (T), Bass (B) vocal staves with piano accompaniment. The lyrics "do - - - - -" are written below the bass staff. A section marker 'B' is present. Dynamics include mezzo-forte (mf) and piano (p). A watermark 'NB noter' and 'This music is copyright protected' are visible over the score.

Soprano (S), Alto (A), Tenor (T), Bass (B) vocal staves with piano accompaniment. Dynamics include mezzo-forte (mf) and piano (p). The music continues with complex vocal lines and accompaniment.

S  
A  
T  
B

mf  
mf  
mf  
f

S  
A  
T  
B

mf  
mf  
mf  
fz



S  
A  
T  
B

**ESPRESSIVO**

**C**

**! ca. 96**

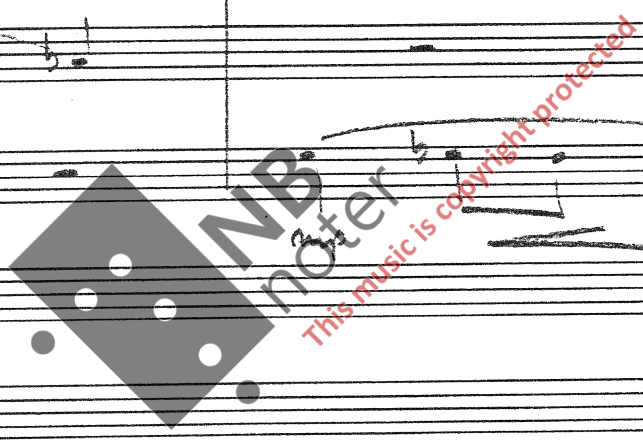
mp  
mp  
mp  
mp



Solo:

Handwritten musical notation for the first system, featuring four staves (S, A, T, B). The notation includes notes, rests, and dynamic markings such as *mf* and *p*. A slur is present over the top staff.

Handwritten musical notation for the second system, including a *bend* instruction and a triplet of notes in the top staff. Dynamic markings *mf* are present in the lower staves.



Solo

Handwritten musical notation for the third system, featuring a *Solo* instruction and multiple triplet markings over the top staff.

Handwritten musical score for Soprano (S), Alto (A), Tenor (T), and Bass (B) voices. The score is written in a key signature of two flats (B-flat and E-flat) and a 4/4 time signature. The Soprano part begins with a melodic line that includes a phrase marked "band". The Alto, Tenor, and Bass parts provide harmonic support with various rhythmic patterns and melodic fragments.

Handwritten musical score for Soprano (S), Alto (A), Tenor (T), and Bass (B) voices. A circled letter 'A' is written above the Soprano staff. The Soprano part features a melodic line with a "Viv" marking. The Alto, Tenor, and Bass parts continue with their respective parts. A large watermark "KMB noter" and the text "This music is copyright protected" are overlaid on the score.

Handwritten musical score for Soprano (S), Alto (A), Tenor (T), and Bass (B) voices. This section includes dynamic markings such as "mp" (mezzo-piano) for the Soprano, Alto, and Tenor parts. The Soprano part has a melodic line with a "Viv" marking. The Alto, Tenor, and Bass parts provide harmonic support. A large watermark "KMB noter" and the text "This music is copyright protected" are overlaid on the score.



Handwritten musical score for Soprano (S), Alto (A), Tenor (T), and Bass (B) voices, measures 1-4. The key signature is B-flat major (two flats). The Soprano part begins with a half note G4. The Alto part has a half note G4 with an accent (^). The Tenor part has a half note G3. The Bass part has a half note G2. Dynamic markings include *f* and *mp* in the final measure.

Handwritten musical score for Soprano (S), Alto (A), Tenor (T), and Bass (B) voices, measures 5-8. The Soprano part is marked *Solo espress.* and features a melodic line with a slur and a *band* marking. The Alto part has a half note G4 with an accent (^). The Tenor part has a half note G3. The Bass part has a half note G2. Dynamic markings include *mp*, *p*, and *f*.

Handwritten musical score for Soprano (S), Alto (A), Tenor (T), and Bass (B) voices, measures 9-12. The Soprano part has a half note G4. The Alto part has a half note G4 with an accent (^). The Tenor part has a half note G3. The Bass part has a half note G2. Dynamic markings include *mp* and *p*.

Handwritten musical score for the first system. It consists of four vocal staves (Soprano, Alto, Tenor, Bass) and piano accompaniment. The key signature is B-flat major (two flats) and the time signature is 3/4. The Soprano part begins with a half note G4, followed by quarter notes A4, Bb4, and C5. The piano accompaniment features a bass line with notes G2, Bb2, and C3, and a treble line with notes G4, Bb4, and C5. Dynamic markings include accents and a piano (p) marking.

Handwritten musical score for the second system. It continues the vocal and piano parts from the first system. The Soprano part has a melodic line with notes G4, A4, Bb4, and C5. The piano accompaniment includes a triplet of notes in the bass line. Dynamic markings include piano (p) and piano-piano (pp). A watermark for 'NBnotes' and 'This music is copyright protected' is visible over the score.

Handwritten musical score for the third system, starting with a boxed 'E' and the word 'Rubato'. The Soprano part begins with a half note G4, followed by quarter notes A4, Bb4, and C5. The piano accompaniment features a bass line with notes G2, Bb2, and C3, and a treble line with notes G4, Bb4, and C5. Dynamic markings include piano (p) and piano-piano (pp). A watermark for 'NBnotes' and 'This music is copyright protected' is visible over the score.



Handwritten musical score for the first system. It consists of four vocal staves (Soprano, Alto, Tenor, Bass) and piano accompaniment. The Soprano part has a melodic line with notes like G4, A4, B4, C5, and D5. The piano accompaniment features chords and moving lines. Dynamic markings include 'mp' (mezzo-piano).

Handwritten musical score for the second system. It continues the vocal and piano parts from the first system. The Soprano part has notes like E4, F4, G4, A4, B4, C5. The piano accompaniment includes chords and moving lines. Dynamic markings include 'mp', 'f', and 'p'.

Handwritten musical score for the third system. It includes a key signature change to C major, indicated by a box containing 'C' and 'F'. The Soprano part has notes like G4, A4, B4, C5. The piano accompaniment includes chords and moving lines. Dynamic markings include 'ato', 'mf', and 'f'.

S  
A  
T  
B

S  
A  
T  
B

mf p f

S  
A  
T  
B

mf



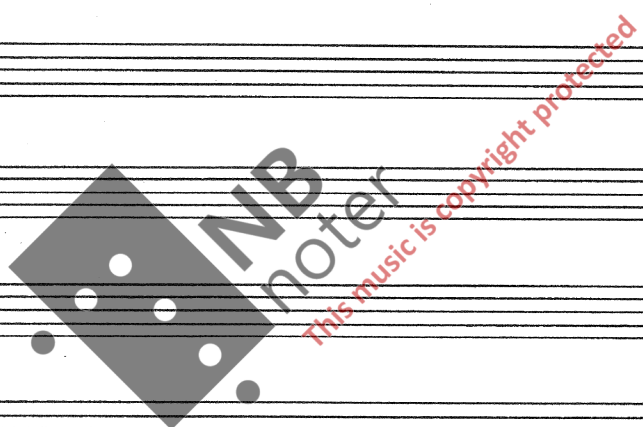
Soprano (S), Alto (A), Tenor (T), Bass (B) vocal staves with musical notation. Includes dynamic markings such as *mf* and *f*, and time signatures like  $\frac{2}{4}$  and  $\frac{3}{4}$ .

Soprano (S), Alto (A), Tenor (T), Bass (B) vocal staves with musical notation. Includes dynamic markings such as *mf* and *f*, and time signatures like  $\frac{2}{4}$  and  $\frac{3}{4}$ .

Soprano (S), Alto (A), Tenor (T), Bass (B) vocal staves with musical notation. Includes dynamic markings such as *mf* and *f*, and time signatures like  $\frac{2}{4}$  and  $\frac{3}{4}$ .

S  
A  
T  
B

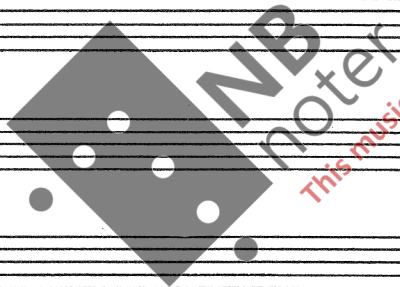
Rit.....





Saksobu kwakett n. 2

Ben Kuma 74



This music is copyright protected

# II

S. *sempre più vibrato*  
*pp cresc..... f P*  
*bend mf PP*

A

T

B *3*  
*P. PP*

S *b*  
*ff fp*  
*bend mf PP rit... Ppp rit...*

A

T

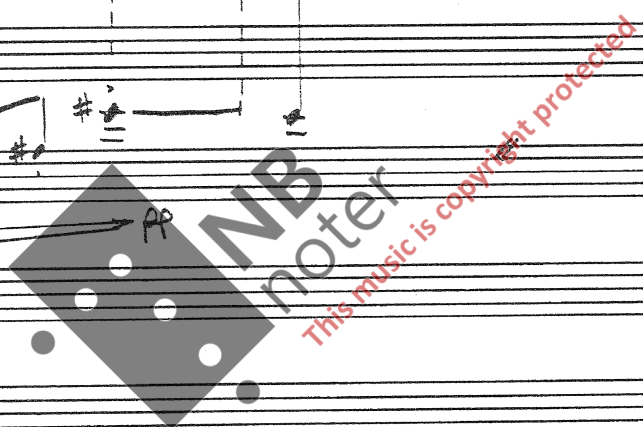
B *3*  
*P. PP Ppp*

S *dr*  
*mp*  
*acc..... rit.....*

A

T

B *mf*  
*b*





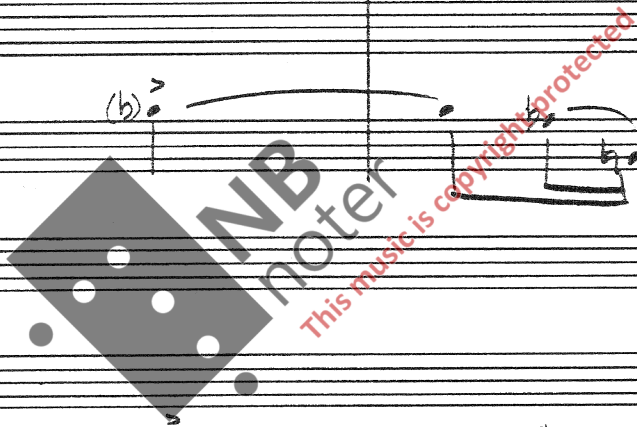
Handwritten musical score for Soprano (S), Alto (A), Tenor (T), and Bass (B) voices. The system includes a key signature change to one flat (b) and dynamic markings of *ff*, *f*, *mp*, and *f*. The Soprano part features a melodic line with a fermata and a triplet. The Bass part includes a triplet and a fermata.

Handwritten musical score for Soprano (S), Alto (A), Tenor (T), and Bass (B) voices. It includes a tempo marking of  $\text{♩} = \text{ca. } 60-66$ . The Soprano part has a melodic line with a fermata and a triplet. The Bass part includes a fermata and a triplet. A watermark for "NB noter" is visible.

Handwritten musical score for Soprano (S), Alto (A), Tenor (T), and Bass (B) voices. The system includes dynamic markings of *mf* and *mp*. The Soprano part features a melodic line with a fermata and a triplet. The Bass part includes a fermata and a triplet.

Soprano (S), Alto (A), Tenor (T), Bass (B) vocal staves. The Soprano part features a melodic line with a triplet of eighth notes, a quarter note, and a half note, followed by a triplet of eighth notes and a half note. The Alto part is mostly silent. The Tenor part has a few notes. The Bass part has a melodic line with a triplet of eighth notes and a half note. Dynamics include *mf* and *mp*.

Soprano (S), Alto (A), Tenor (T), Bass (B) vocal staves. The Soprano part continues with a melodic line, including a triplet of eighth notes and a half note. The Alto part is mostly silent. The Tenor part has a few notes. The Bass part has a melodic line with a triplet of eighth notes and a half note. Dynamics include *mf* and *mp*.



Soprano (S), Alto (A), Tenor (T), Bass (B) vocal staves. The Soprano part features a melodic line with a triplet of eighth notes and a half note, followed by a quarter note and a half note. The Alto part is mostly silent. The Tenor part has a few notes. The Bass part has a melodic line with a triplet of eighth notes and a half note. Dynamics include *ppp*, *pp*, *f*, and *p*. The text 'Sempre piu vib.' is written above the Soprano staff.



S  
A  
T  
B

*cresc.* *f* *mf*

Poco A Poco

*p* *cresc.* *f* *mf*

S  
A  
T  
B

DI - MI - NU - EN - DO



S  
A  
T  
B

**A** Tutti

*pp* *pp*

Soprano (S), Alto (A), Tenor (T), Bass (B) vocal parts with piano accompaniment. The music features melodic lines with slurs and accents, and piano accompaniment with chords and moving lines. Dynamics include *mp*.

Soprano (S), Alto (A), Tenor (T), Bass (B) vocal parts with piano accompaniment. The music continues with melodic lines and piano accompaniment. Dynamics include *mf*.

Section B: Soprano (S), Alto (A), Tenor (T), Bass (B) vocal parts with piano accompaniment. The music features a more rhythmic and harmonic texture with triplets and chords. Dynamics include *p*.



Soprano (S), Alto (A), Tenor (T), Bass (B) vocal staves. The system contains four measures of music. The Soprano part has rests. The Alto part has notes with a forte (f) dynamic. The Tenor part has notes with a piano (p) dynamic. The Bass part has rests. There are some handwritten annotations like 'PPP' and '8' in the Tenor staff.

Soprano (S), Alto (A), Tenor (T), Bass (B) vocal staves. The system contains four measures of music. The Soprano part has notes with a forte (f) dynamic. The Alto part has notes with a forte (f) dynamic and a 'Dim.' (diminuendo) marking. The Tenor part has notes with a forte (f) dynamic and a 'Dim.' marking. The Bass part has notes with a forte (f) dynamic and a 'Dim.' marking. There is a large watermark 'NB noter' and 'This music is copyright protected' overlaid on the system.

Soprano (S), Alto (A), Tenor (T), Bass (B) vocal staves. The system contains four measures of music. The Soprano part has notes with a forte (f) dynamic. The Alto part has notes with a forte (f) dynamic. The Tenor part has notes with a forte (f) dynamic. The Bass part has notes with a mezzo-piano (mp) dynamic. There are some handwritten annotations like 'mp' and 'dim' in the Bass staff.

Soprano (S), Alto (A), Tenor (T), Bass (B) vocal staves with piano accompaniment. The system includes dynamic markings such as *f*, *dim*, and *cresc.* (crescendo). The music features complex rhythmic patterns and melodic lines.

Soprano (S), Alto (A), Tenor (T), Bass (B) vocal staves with piano accompaniment. This system includes a section marked with a circled 'C' and dynamic markings like *p* (piano) and *fp* (fortissimo). The piano part features a steady accompaniment with some rhythmic variation.

Soprano (S), Alto (A), Tenor (T), Bass (B) vocal staves with piano accompaniment. This system includes dynamic markings such as *p* (piano) and *mf* (mezzo-forte). The piano part features a steady accompaniment with some rhythmic variation.



Handwritten musical score for voices S, A, T, B. The score consists of four staves. The vocal lines feature various notes, rests, and accidentals. The bass line is written in a lower register. The music is in a common time signature.

Handwritten musical score for voices S, A, T, B. This section includes dynamic markings such as 'p' and 'rit'. The vocal lines have long notes and rests. The bass line is written in a lower register. The music is in a common time signature.

HVER SOLO INNSATS SPILLES PÅ EN PARODISK, ERTENDE MÅTE, MEN SERIØST.

**D**  $\text{♩} = \text{ca. } 88$

Handwritten musical score for voices S, A, T, B. This section is marked with a 'D' and a tempo of 'ca. 88'. It features a 5/4 time signature and includes dynamic markings like 'p', 'pp', and 'mf'. The vocal lines are more active with many notes. The bass line is written in a lower register.

Handwritten musical score system 1, featuring four staves labeled S, A, T, and B. The score includes various musical notations such as notes, rests, and dynamic markings like *p*, *mf*, and *pp*. A handwritten note *(b)* is present in the T part.

Handwritten musical score system 2, featuring four staves labeled S, A, T, and B. The S part includes the instruction *sempre piu vibrato* with a wavy line. Dynamic markings include *p*, *f*, *pp*, and *mp*. A large watermark is overlaid on the system.

Handwritten musical score system 3, featuring four staves labeled S, A, T, and B. The score includes notes, rests, and dynamic markings like *f* and *mf*.



**E**

Soprano (S), Alto (A), Tenor (T), Bass (B) staves. Dynamics: p, mp, f. Time signature: 4/4.

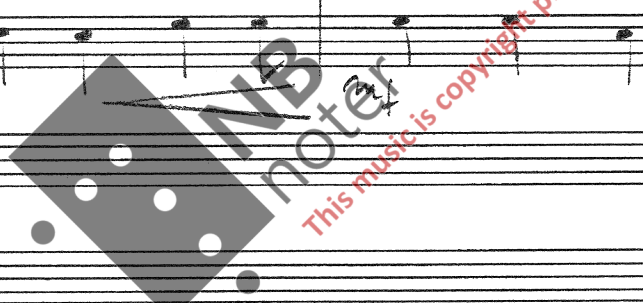
*Allegro (ca. 132)*

Soprano (S), Alto (A), Tenor (T), Bass (B) staves. Dynamics: p, mf, f. Time signature: 7/8. Includes a watermark: NB noter. This music is copyright protected.

Soprano (S), Alto (A), Tenor (T), Bass (B) staves. Dynamics: f, pp.

Handwritten musical score for Soprano (S), Alto (A), Tenor (T), and Bass (B) voices. The system contains four measures. The Soprano part begins with a treble clef and a key signature of one flat. The first measure contains notes with accidentals:  $b+$ ,  $+$ ,  $+$ ,  $+$ ,  $\sharp$ ,  $o$ ,  $b+$ ,  $o$ . The second measure contains notes with accidentals:  $\sharp$ ,  $o$ ,  $o$ ,  $o$ ,  $\sharp$ ,  $\sharp$ . The third measure contains notes with accidentals:  $(b)$ ,  $b$ ,  $o$ ,  $\sharp$ . The fourth measure contains notes with accidentals:  $(b)$ ,  $b$ ,  $o$ ,  $\sharp$ . The Alto part begins with a treble clef and a key signature of one flat. The first measure contains notes with accidentals:  $b+$ . The second measure contains notes with accidentals:  $\sharp$ ,  $o$ ,  $o$ ,  $\sharp$ . The third measure contains notes with accidentals:  $(b)$ ,  $b$ ,  $o$ . The fourth measure contains notes with accidentals:  $(b)$ ,  $b$ ,  $o$ ,  $\sharp$ . The Tenor part begins with a treble clef and a key signature of one flat. The first measure contains notes with accidentals:  $\sharp$ ,  $+$ ,  $+$ ,  $\sharp$ . The second measure contains notes with accidentals:  $\sharp$ ,  $+$ ,  $+$ ,  $\sharp$ . The third measure contains notes with accidentals:  $(b)$ ,  $b$ ,  $o$ ,  $\sharp$ . The fourth measure contains notes with accidentals:  $(b)$ ,  $b$ ,  $o$ ,  $\sharp$ . The Bass part begins with a bass clef and a key signature of one flat. The first measure contains notes with accidentals:  $\sharp$ ,  $+$ ,  $+$ ,  $\sharp$ . The second measure contains notes with accidentals:  $\sharp$ ,  $+$ ,  $+$ ,  $\sharp$ . The third measure contains notes with accidentals:  $(b)$ ,  $b$ ,  $o$ ,  $\sharp$ . The fourth measure contains notes with accidentals:  $(b)$ ,  $b$ ,  $o$ ,  $\sharp$ . Dynamics include  $P$  in the first measure of the Alto and Tenor parts, and  $P$  in the second measure of the Tenor and Bass parts.

Handwritten musical score for Soprano (S), Alto (A), Tenor (T), and Bass (B) voices. The system contains four measures. The Soprano part begins with a treble clef and a key signature of one flat. The first measure contains notes with accidentals:  $b$ ,  $o$ ,  $b$ ,  $o$ . The second measure contains notes with accidentals:  $b$ ,  $o$ ,  $b$ ,  $o$ . The third measure contains notes with accidentals:  $b$ ,  $o$ ,  $b$ ,  $o$ . The fourth measure contains notes with accidentals:  $\sharp$ ,  $o$ ,  $o$ ,  $\sharp$ . The Alto part begins with a treble clef and a key signature of one flat. The first measure contains notes with accidentals:  $b$ ,  $o$ ,  $b$ ,  $o$ . The second measure contains notes with accidentals:  $b$ ,  $o$ ,  $b$ ,  $o$ . The third measure contains notes with accidentals:  $\sharp$ ,  $o$ ,  $o$ ,  $\sharp$ . The fourth measure contains notes with accidentals:  $\sharp$ ,  $o$ ,  $o$ ,  $\sharp$ . The Tenor part begins with a treble clef and a key signature of one flat. The first measure contains notes with accidentals:  $b$ ,  $+$ ,  $+$ ,  $o$ . The second measure contains notes with accidentals:  $b$ ,  $o$ . The third measure contains notes with accidentals:  $\sharp$ ,  $+$ ,  $b$ . The fourth measure contains notes with accidentals:  $o$ ,  $o$ ,  $\sharp$ . The Bass part begins with a bass clef and a key signature of one flat. The first measure contains notes with accidentals:  $\sharp$ ,  $o$ ,  $o$ ,  $\sharp$ . The second measure contains notes with accidentals:  $\sharp$ ,  $o$ ,  $o$ ,  $\sharp$ . The third measure contains notes with accidentals:  $\sharp$ ,  $o$ ,  $o$ ,  $\sharp$ . The fourth measure contains notes with accidentals:  $\sharp$ ,  $o$ ,  $o$ ,  $\sharp$ . Dynamics include  $mp$  in the first measure of the Bass part, and  $mf$  in the second measure of the Soprano, Alto, and Tenor parts.



Handwritten musical score for Soprano (S), Alto (A), Tenor (T), and Bass (B) voices. The system contains four measures. The Soprano part begins with a treble clef and a key signature of one flat. The first measure contains notes with accidentals:  $\sharp$ ,  $o$ ,  $o$ ,  $\sharp$ . The second measure contains notes with accidentals:  $\sharp$ ,  $o$ ,  $o$ ,  $\sharp$ . The third measure contains notes with accidentals:  $\sharp$ ,  $o$ ,  $o$ ,  $\sharp$ . The fourth measure contains notes with accidentals:  $\sharp$ ,  $o$ ,  $o$ ,  $\sharp$ . The Alto part begins with a treble clef and a key signature of one flat. The first measure contains notes with accidentals:  $\sharp$ ,  $o$ ,  $o$ ,  $\sharp$ . The second measure contains notes with accidentals:  $\sharp$ ,  $o$ ,  $o$ ,  $\sharp$ . The third measure contains notes with accidentals:  $\sharp$ ,  $o$ ,  $o$ ,  $\sharp$ . The fourth measure contains notes with accidentals:  $\sharp$ ,  $o$ ,  $o$ ,  $\sharp$ . The Tenor part begins with a treble clef and a key signature of one flat. The first measure contains notes with accidentals:  $\sharp$ ,  $o$ ,  $o$ ,  $\sharp$ . The second measure contains notes with accidentals:  $\sharp$ ,  $o$ ,  $o$ ,  $\sharp$ . The third measure contains notes with accidentals:  $\sharp$ ,  $o$ ,  $o$ ,  $\sharp$ . The fourth measure contains notes with accidentals:  $\sharp$ ,  $o$ ,  $o$ ,  $\sharp$ . The Bass part begins with a bass clef and a key signature of one flat. The first measure contains notes with accidentals:  $\sharp$ ,  $o$ ,  $o$ ,  $\sharp$ . The second measure contains notes with accidentals:  $\sharp$ ,  $o$ ,  $o$ ,  $\sharp$ . The third measure contains notes with accidentals:  $\sharp$ ,  $o$ ,  $o$ ,  $\sharp$ . The fourth measure contains notes with accidentals:  $\sharp$ ,  $o$ ,  $o$ ,  $\sharp$ . Dynamics include  $pp$  in the second measure of the Soprano, Alto, Tenor, and Bass parts.



Soprano, Alto, Tenor, Bass vocal staves with musical notation. The system contains four measures of music. The Soprano part features a melodic line with slurs and accents. The Alto, Tenor, and Bass parts provide harmonic support with chords and rhythmic patterns.

Soprano, Alto, Tenor, Bass vocal staves with lyrics and musical notation. The lyrics are: "de --- cres --- cen --- de ---". The Soprano part includes trills and dynamic markings like *p* and *ppp*. The Alto and Tenor parts have rests followed by musical notation. The Bass part includes trills and dynamic markings like *p* and *ppp*.

Soprano, Alto, Tenor, Bass vocal staves with musical notation. The system contains four measures of music. The Soprano part has rests followed by a melodic line with a trill. The Alto, Tenor, and Bass parts have rests followed by musical notation. Dynamic markings like *pp* are present.

S  
A  
T  
B

S  
A  
T  
B

S  
A  
T  
B