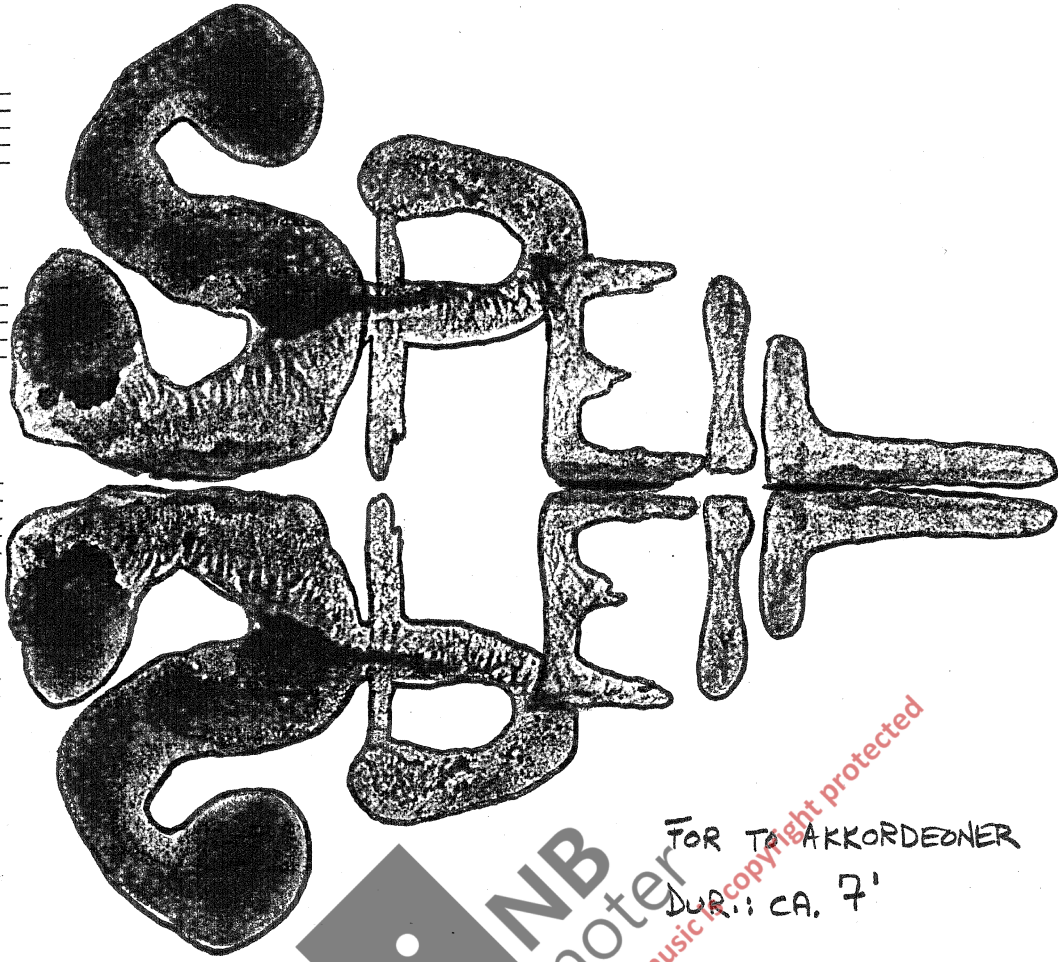


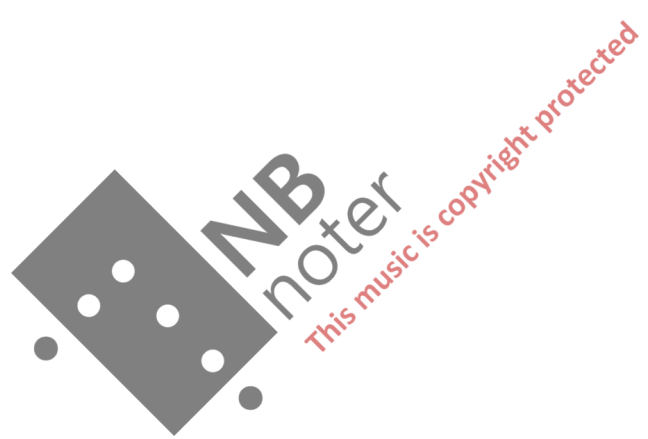
BJØRN KRUSE :



FOR TO AKKORDEONER
DUR.: CA. 7'

KOMPOSERT PÅ BESTILLING FRA
NORSK AKKORDEONLÆRERFORENING
1982





$\text{♩} = \text{ca. } 60$

I

$\text{♩} = \text{ca. } 60$

3/4 *ff* legato *mf* *ff* *mf* *ff* simile

II

3/4 *ff* legato *mf* *ff* *mf* *ff* simile

molto

molto

mp *pp* poco a poco accel...

mp *pp* poco a poco accel...

Handwritten musical score for the first system, consisting of four staves. The top two staves are treble clef and the bottom two are bass clef. The music features a sequence of chords and melodic lines. The time signature is 4/4, indicated by a '4' on the right side of the system.

Handwritten musical score for the second system, consisting of two staves. The top staff is treble clef and the bottom is bass clef. The music continues with chords and melodic lines. The time signature is 4/4, indicated by a '4' on the left side of the system.

Handwritten musical score for the third system, consisting of two staves. The top staff is treble clef and the bottom is bass clef. The music continues with chords and melodic lines. The time signature is 4/4, indicated by a '4' on the left side of the system.

Handwritten musical score for the fourth system, consisting of two staves. The top staff is treble clef and the bottom is bass clef. The music includes dynamic markings like "cresc. e ritardando" and "f", and a tempo marking "Alto". The time signature is 3/4, indicated by a "3" on the right side of the system.



♩ = ca. 60

A

The image shows a handwritten musical score for piano, consisting of six systems of staves. The notation is in treble and bass clefs. The first system includes a tempo marking '♩ = ca. 60' and a section marker 'A'. The score features various rhythmic patterns, including triplets and sixteenth notes, and dynamic markings such as 'mf'. A large watermark is present in the center of the page, consisting of a black diamond shape with the text 'NB noter' and 'This music is copyright protected' written across it.

Handwritten musical score for guitar and voice. The score consists of 12 staves. The first 10 staves are in pairs, with the top staff of each pair in treble clef and the bottom staff in bass clef. The 11th and 12th staves are single-line staves. The music is handwritten and includes various notes, rests, and dynamic markings. A large watermark "NB noter" is centered over the middle of the page, and a red diagonal watermark "This music is copyright protected" is also present. The word "dim..." is written in the 11th and 12th staves.

Handwritten musical notation for the first system, featuring a treble and bass staff with notes, rests, and dynamic markings such as *P* and *(h)*.

Handwritten musical notation for the second system, including a treble and bass staff with notes and rests.

Handwritten musical notation for the third system, including a treble and bass staff. It features the tempo marking *poco riten.....* and *A tempo*, along with a boxed section labeled **B**.

Handwritten musical notation for the fourth system, including a treble and bass staff. It features the tempo marking *poco riten.....* and *A tempo*. A large watermark is present: **NB** noter *This music is copyright protected*.

Handwritten musical notation for the fifth system, including a treble and bass staff with notes and rests.

Handwritten musical notation for the sixth system, including a treble and bass staff with notes and rests.

Handwritten musical score for the first system. The top staff is in treble clef with notes and accidentals (sharps, flats, naturals) and some plus signs. The bottom staff is in bass clef with a wavy line and a few notes. A large bracket spans across both staves.

Handwritten musical score for the second system. The top staff continues with notes and accidentals. The bottom staff has a wavy line and a few notes. A large bracket spans across both staves. The word "dim" is written in the right-hand measure of the bottom staff.

Handwritten musical score for the third system. The top staff has notes and accidentals. The bottom staff has notes and accidentals. A large bracket spans across both staves. A watermark "INB noter" and "This music is copyright protected" is overlaid on the system.

Handwritten musical score for the fourth system. The top staff has notes and accidentals. The bottom staff has notes and accidentals. A large bracket spans across both staves. The dynamic marking "pp" is written in the first measure of the bottom staff.

Handwritten musical score for the fifth system. The top staff has notes and accidentals. The bottom staff has notes and accidentals. A large bracket spans across both staves. The dynamic marking "mf" is written in the first measure of the bottom staff.

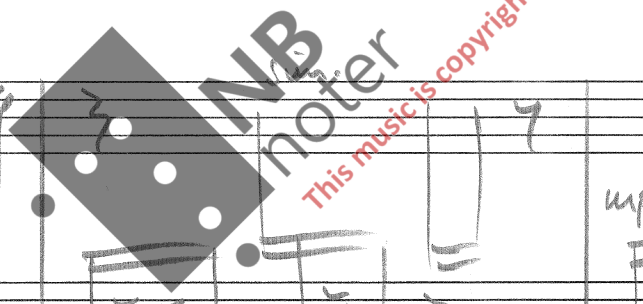
Handwritten musical notation for the first system, featuring a treble clef and a grand staff. The notation includes a melodic line with a fermata and a dynamic marking of *mp*. The word *cresc...* is written below the staff.

Handwritten musical notation for the second system, featuring a bass clef and a grand staff. The notation includes a rhythmic accompaniment with chords and a dynamic marking of *mp*.

Handwritten musical notation for the third system, featuring a treble clef and a grand staff. The notation includes a melodic line with a fermata and a dynamic marking of *mf*. The word *cresc.* is written below the staff.

Handwritten musical notation for the fourth system, featuring a bass clef and a grand staff. The notation includes a rhythmic accompaniment with chords and a dynamic marking of *mp*. The word *dim...* is written above the staff.

Handwritten musical notation for the fifth system, featuring a treble clef and a grand staff. The notation includes a melodic line with a fermata and a dynamic marking of *mp*. The word *dim...* is written above the staff.



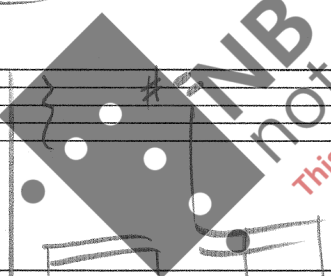
D[#] # 7 6 Sim.

Handwritten musical notation for the first system, consisting of two staves. The top staff is in treble clef, and the bottom staff is in bass clef. The music includes various notes, rests, and accidentals. A box around the notes in the first measure of the top staff contains the handwritten text "D[#] # 7 6 Sim.".

Handwritten musical notation for the second system, consisting of two staves. The top staff is in treble clef, and the bottom staff is in bass clef. The music continues with notes and rests.

Handwritten musical notation for the third system, consisting of two staves. The top staff is in treble clef, and the bottom staff is in bass clef. The music includes notes and rests.

Handwritten musical notation for the fourth system, consisting of two staves. The top staff is in treble clef, and the bottom staff is in bass clef. The music includes notes, rests, and a complex passage in the final measure of the top staff with many notes.



This music is copyright protected

simile

Handwritten musical score for the first system. It consists of four staves. The top staff is a treble clef with a complex chordal structure and the word "simile" written above it. The second staff is a treble clef with notes and rests, including a circled "b" and some accidentals. The third staff is a bass clef with notes and rests. The bottom staff is a bass clef with notes and rests, including some slurs.

Handwritten musical score for the second system. It consists of four staves. The top staff is a treble clef with notes and rests. The second staff is a treble clef with notes and rests, including a circled "b" and some accidentals. The third staff is a bass clef with notes and rests, including a diamond-shaped graphic with the letters "NB" and the word "noter" written across it. The bottom staff is a bass clef with notes and rests.

Handwritten musical score for the third system. It consists of four staves. The top staff is a treble clef with notes and rests, including the word "sim." written above it. The second staff is a treble clef with notes and rests, including the word "sim." written above it. The third staff is a bass clef with notes and rests, including the word "tr" and a circled "b". The bottom staff is a bass clef with notes and rests, including some slurs.

E

Handwritten musical notation for the first system. The top staff (treble clef) contains a guitar chord diagram for E major and the instruction "Sim.". The bottom staff (bass clef) contains a guitar chord diagram for E major with a sharp sign, the instruction "Sim.", and a dynamic marking "pp". The system concludes with a melodic line in the bass clef and a guitar chord diagram in the treble clef.

Handwritten musical notation for the second system. The top staff (treble clef) contains a guitar chord diagram for E major with a flat sign and the instruction "Sim.". The bottom staff (bass clef) contains a melodic line with notes labeled "b", "e", and "e". A large watermark "NB noter" and the text "This music is copyright protected" are overlaid on the system.

Handwritten musical notation for the third system. The top staff (treble clef) contains a guitar chord diagram for E major with a flat sign. The bottom staff (bass clef) contains a melodic line with notes labeled "b", "b+", "b+", and "b".

The image shows a handwritten musical score for piano, consisting of six systems of staves. The notation includes various musical symbols such as notes, rests, and dynamic markings. A large watermark is present in the center of the page.

System 1: The first system consists of two staves. The upper staff contains several measures of music with notes and rests. The lower staff contains notes with accidentals (flats) and some rests.

System 2: The second system also has two staves. The upper staff features a melodic line with notes and rests. The lower staff has notes with accidentals. A dynamic marking *cresc.* is written above the lower staff.

System 3: The third system has two staves. The upper staff contains notes with accidentals and rests. The lower staff has notes with accidentals and rests. A dynamic marking *p* is written above the lower staff.

System 4: The fourth system has two staves. The upper staff contains notes with accidentals and rests. The lower staff has notes with accidentals and rests. A dynamic marking *sim.* is written above the lower staff.

System 5: The fifth system has two staves. The upper staff contains notes with accidentals and rests. The lower staff has notes with accidentals and rests. A dynamic marking *sim.* is written above the lower staff.

System 6: The sixth system has two staves. The upper staff contains notes with accidentals and rests. The lower staff has notes with accidentals and rests. A dynamic marking *sim.* is written above the lower staff.

Watermark: A large, semi-transparent watermark is centered on the page, reading "NB Noter" in a stylized font, with "This music is copyright protected" written in smaller text below it.

Handwritten musical notation for the first system. It consists of three staves. The top staff is a treble clef with a key signature of one flat (Bb) and a common time signature. It contains a melodic line with notes G4, A4, Bb4, C5, and D5, with a fermata over the last two notes. The middle staff is a treble clef with a key signature of one flat, containing a series of chords: Bb4, C5, Bb4, C5, Bb4, C5, Bb4, C5, Bb4, C5, Bb4, C5. The bottom staff is a bass clef with a key signature of one flat, containing a series of chords: Bb4, C5, Bb4, C5, Bb4, C5, Bb4, C5, Bb4, C5, Bb4, C5. Dynamics include 'mf' at the beginning and 'sim.' (sustained) above the chords.

Handwritten musical notation for the second system. It consists of three staves. The top staff is a treble clef with a key signature of one flat and a common time signature. It contains a melodic line with notes G4, A4, Bb4, C5, and D5, with a fermata over the last two notes. The middle and bottom staves are empty, with diagonal lines indicating they are not to be played. A large watermark is overlaid on the system, reading 'NB noter' and 'This music is copyright protected'.

Handwritten musical notation for the third system. It consists of three staves. The top staff is a treble clef with a key signature of one flat and a common time signature. It contains a complex chordal structure with notes G4, A4, Bb4, C5, and D5, with a fermata over the last two notes. The middle staff is a treble clef with a key signature of one flat, containing a series of chords: Bb4, C5, Bb4, C5, Bb4, C5, Bb4, C5, Bb4, C5, Bb4, C5. The bottom staff is a bass clef with a key signature of one flat, containing a series of chords: Bb4, C5, Bb4, C5, Bb4, C5, Bb4, C5, Bb4, C5, Bb4, C5. Dynamics include 'mf' at the beginning and 'sim.' (sustained) above the chords.

Handwritten musical score for the first system. It consists of two staves: a treble staff and a bass staff. The treble staff contains a complex sequence of chords and melodic fragments, with various accidentals (sharps, flats, naturals) and stems. The bass staff contains a more melodic line with some rests and a final measure containing a fermata. The system is marked with a 4/4 time signature on the right side.

Handwritten musical score for the second system. It consists of two staves: a treble staff and a bass staff. The treble staff begins with a 4/4 time signature and contains a melodic line with various accidentals. The bass staff contains a more complex chordal texture. Dynamic markings include *mf* (mezzo-forte) and *dim.* (diminuendo). A large watermark is present in the center of the system, reading "NB Noter" and "This music is copyright protected".

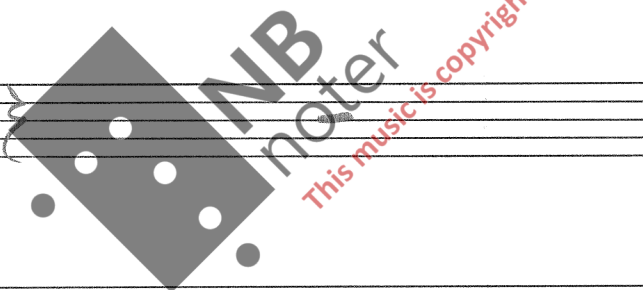
Handwritten musical score for the third system. It consists of two staves: a treble staff and a bass staff. The treble staff contains a melodic line with various accidentals and a piano (*P*) dynamic marking. The bass staff contains a more complex chordal texture. The system is marked with a 4/4 time signature on the right side.

Handwritten musical notation on a grand staff. The upper staff contains a sequence of notes with various accidentals (sharps, naturals, flats) and stems. The lower staff is empty. The word "cresc." is written in the right margin.

Handwritten musical notation on a grand staff. The upper staff contains a sequence of notes with various accidentals and stems. The lower staff contains a sequence of notes with various accidentals and stems. The word "cresc." is written in the right margin.

Handwritten musical notation on a grand staff. The upper staff contains a sequence of notes with various accidentals and stems. The lower staff contains a sequence of notes with various accidentals and stems. The dynamic marking "mf" is written in the left margin.

Handwritten musical notation on a grand staff. The upper staff contains a sequence of notes with various accidentals and stems. The lower staff contains a sequence of notes with various accidentals and stems. The dynamic marking "mf" is written in the left margin.



Handwritten musical notation on a grand staff. The upper staff contains a sequence of notes with various accidentals and stems. The lower staff contains a sequence of notes with various accidentals and stems.

Handwritten musical notation on a grand staff. The upper staff contains a sequence of notes with various accidentals and stems. The lower staff contains a sequence of notes with various accidentals and stems. The dynamic marking "f" is written in the left margin.

Handwritten musical notation for the first system, consisting of two staves. The right-hand staff contains the handwritten text "cresc..."

Handwritten musical notation for the second system, consisting of two staves with various notes and accidentals.

Handwritten musical notation for the third system, consisting of two staves. The right-hand staff contains the handwritten text "f"

Handwritten musical notation for the fourth system, consisting of two staves. A large watermark "NB noter" and "This music is copyright protected" is overlaid on the notation.

Handwritten musical notation for the fifth system, consisting of two staves. The left-hand staff contains the handwritten text "(f)"

Handwritten musical notation for the sixth system, consisting of two staves.

Handwritten musical notation for the first system, consisting of four staves. The top staff is in treble clef with a 7/8 time signature and contains a melodic line with various accidentals and dynamics. The second staff is in bass clef with a 7/8 time signature and contains a bass line. The third staff is in treble clef and contains a melodic line similar to the first staff. The fourth staff is in bass clef and contains a bass line similar to the second staff.

Handwritten musical notation for the second system, consisting of four staves. The top staff is in treble clef and contains a melodic line with many notes. The second staff is in bass clef and contains a bass line with a 'dim...' marking. The third staff is in treble clef and contains a melodic line with many notes. The fourth staff is in bass clef and contains a bass line with a 'dim...' marking. A large watermark 'NB Noter' is overlaid on the middle of this system.

Handwritten musical notation for the third system, consisting of four staves. The top staff is in treble clef and contains a melodic line. The second staff is in bass clef and contains a bass line with a 'P' marking. The third staff is in treble clef and contains a melodic line. The fourth staff is in bass clef and contains a bass line with a 'P' marking. A box labeled 'FINE' is drawn on the right side of the system. The page concludes with a signature 'B. K. Kune' and the date 'Nov. 82'.

