

Ståle Kleiberg

# Olavs Draum





Ståle Kleiberg

# Olavs Draum



Bestilt av *Orpheus* med støtte fra Det Norske Komponistfond

## **Ensemble:**

Fløyte

Trombone

Slagverk (xylofon, glockenspiel)

Sopran

Klaver



*This music is copyright protected*

Tekst: Utdrag fra Draumkvedet

# Olavs Draum

Ståle Kleiberg

*♩ = ca. 92*

Fl. *ff*

Trbn.

Perc. Xilofono *ff*

Sopr.

*♩ = ca. 92*

Pno.

*lento*  
*♩ = ca. 58*

Fl.

Trbn. *P*

Perc.

Sopr. *mf*

VIL DU MEG LY-DE, EG KVE-DA KAN OM EIN-KVAN NY -TAN

*lento*  
*♩ = ca. 58*

Pno. *P*

Fl.

Trbn.

Perc.

Sopr.

Pno.

DRENG-JEN, ALT OM'N O — LAV ÅS-TE-SON, SOM HE-VE SO-VI SÅ LENG-JE.

*P*

Fl.

Trbn.

Perc.

Sopr.

Pno.

HAN LA SEG NED OM JOL-EF-TAN, NO HEV'N SO-VI SÅ LENG-JE, VAK-NA KJE FYRR OM

*mf*

**2**

Fl.

Trbn.

Perc.

Sopr.

Pno.

TRET-TAN-DAG-JEN, DÅ FUG-LA-NE SKO-KE VENG-JIR. OG DET VAR O-LAV ÅS-TE-SON, SOM HE-VE SO-VI SÅ

Fl.

Trbn.

Perc.

Sopr.

Pno.

LENG-JE.

*Piu mosso*  
♩ = ca. 84

*Piu mosso*  
♩ = ca. 84

Campanelli

Fl. 

Trbn. 

Perc. 

Sopr. 

Pno. 



4


Fl. 

Trbn. 

Perc. 

Sopr. 

4

Pno. 



5

Fl. [Musical staff]

Trbn. [Musical staff]

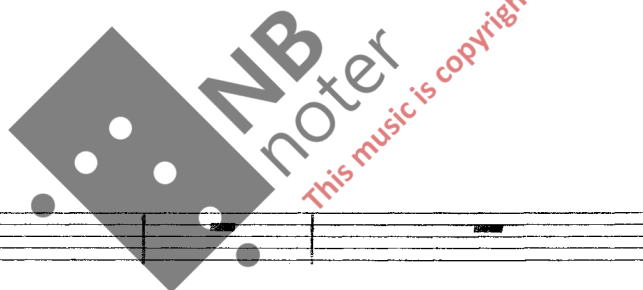
Perc. [Musical staff]

Sopr. [Musical staff]

PRES-TEN STEN-DE FYR AL-TAR-ET OG LES OPP LES-TI-NE LANG-E, O-LAV SET SEG I

5

Pno. [Musical staff]



accel --

6

Fl. [Musical staff]

Trbn. [Musical staff]

Perc. [Musical staff]

Sopr. [Musical staff]

KYR-KJE-DYN-NI OG TEL'E DRAUM-A-NE MANG-E. OG DET VAR O-LAV ÅS-TE-SON, SOM HE-VE SO-VI SÅ

accel --

6

Pno. [Musical staff]

Piu mosso

$\text{♩} = \text{ca. } 108$

Fl.

Trbn.

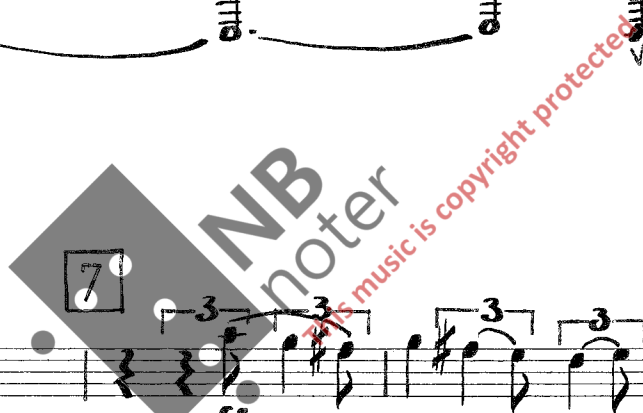
Perc.

Sopr.   
LENG-JE.

Piu mosso

$\text{♩} = \text{ca. } 108$

Pno.



Fl.

Trbn.

Perc.   
Xilofono

Sopr.

Pno.

Fl. 

Trbn. 

Perc. 


Sopr.  EG LA MEG NED OM

Pno. 

8

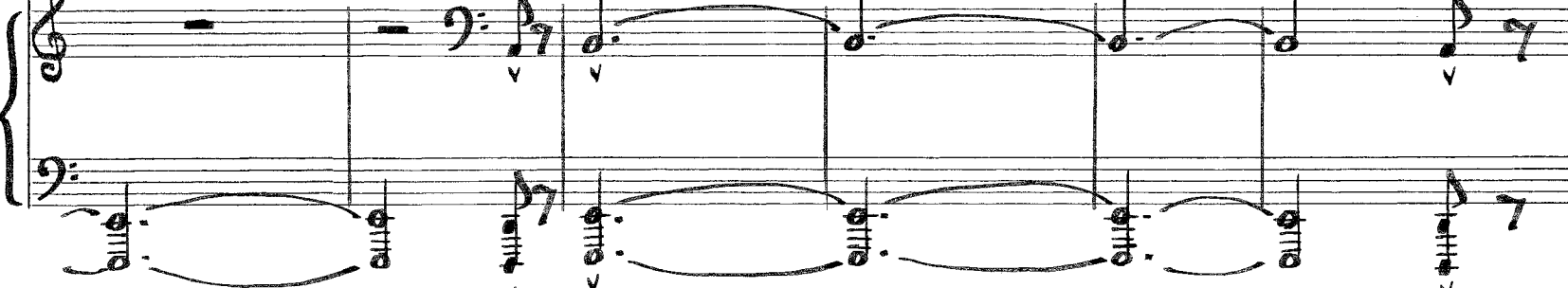
Fl. 

Trbn. 

Perc. 

Sopr.  JOL — EF — TAN, STER — KAN SVEV — NEN FEKK,

8

Pno. 

9

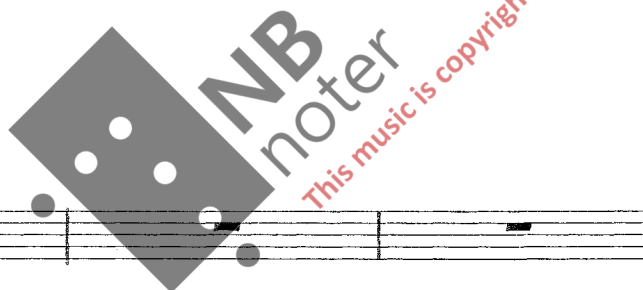
Fl.

Trbn.

Perc.

Sopr.

Pno.



Fl.

Trbn.

Perc.

Sopr.

Pno.



Fl. 10

Trbn.

Perc. Xilofono

Sopr.

Pno. 10

Fl.

Trbn.

Perc.

Sopr.

Pno.

11

Fl.

Trbn.

Perc.

Sopr.

11

Pno.



Fl.

Trbn.

Perc.

Sopr.

Xilofono

Pno.

12 meno mosso  
♩ = ca. 72

Fl.

Trbn.

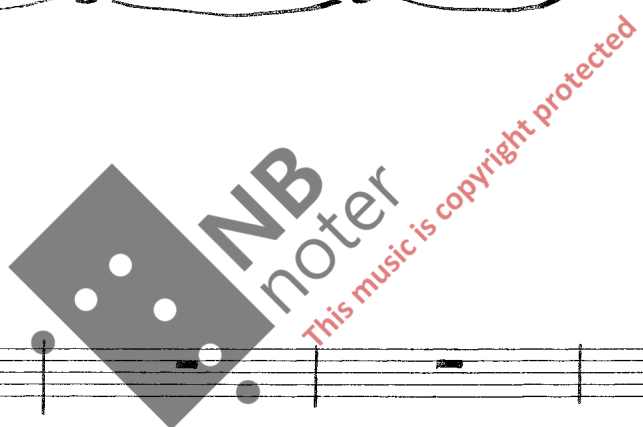
Perc. Rit

Sopr. P 3

EG LA MEG NED OM SOL-EF-TAN,

12 meno mosso  
♩ = ca. 72

Pno.



Fl.

Trbn.

Perc.

Sopr. 3

STERKAN SVEV-NEN FEKK, VAK-NA KJE FYRR OM TRET-TAN-DAG-JEN, DA FOLK-JET AT KYRK-JUN GJEKK. FYRR MÅN-EN SKIN'E OG

Pno.

Piu mosso

13 ♩ = ca.

Fl.

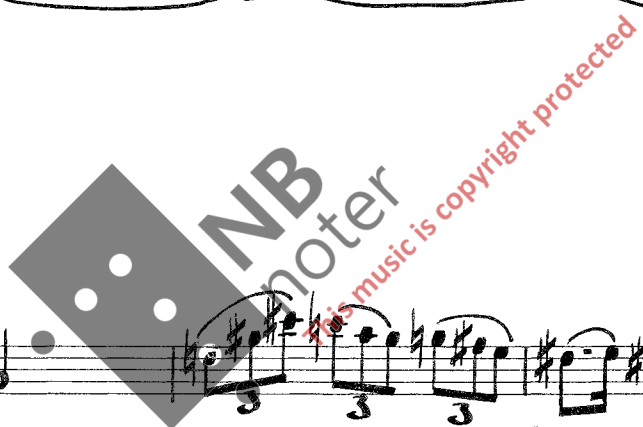
Trbn.

Perc.

Sopr.

13 Piu mosso ♩ = ca.

Pno.



Fl.

Trbn.

Perc.

Sopr.

Pno.



14

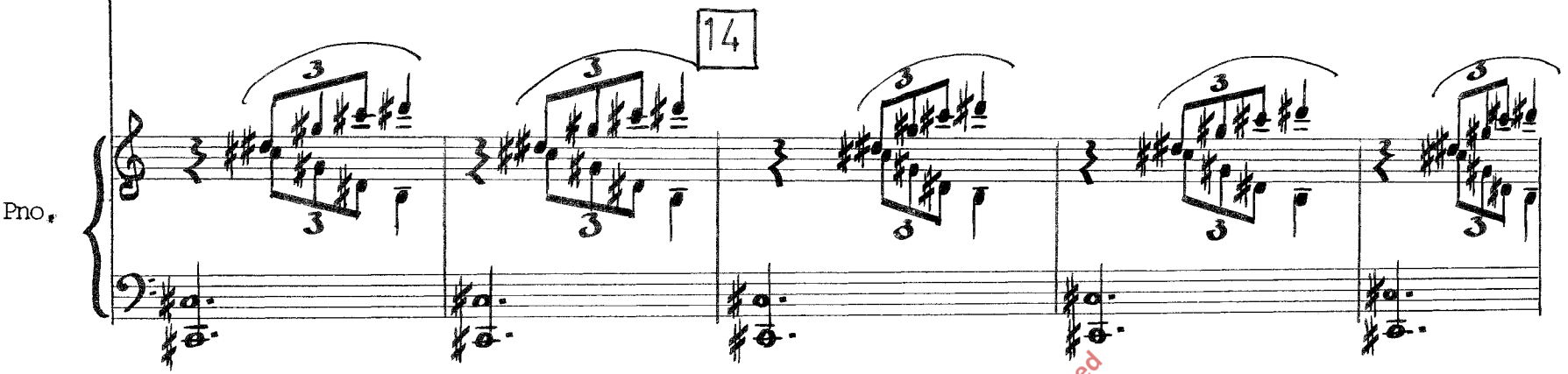
Fl. \_\_\_\_\_

Trbn. \_\_\_\_\_

Perc. \_\_\_\_\_

Sopr. \_\_\_\_\_

EG - HEV VO - RI MEG OPP MED SKY OG NED-ATT MED HAV-ET

Pno. 



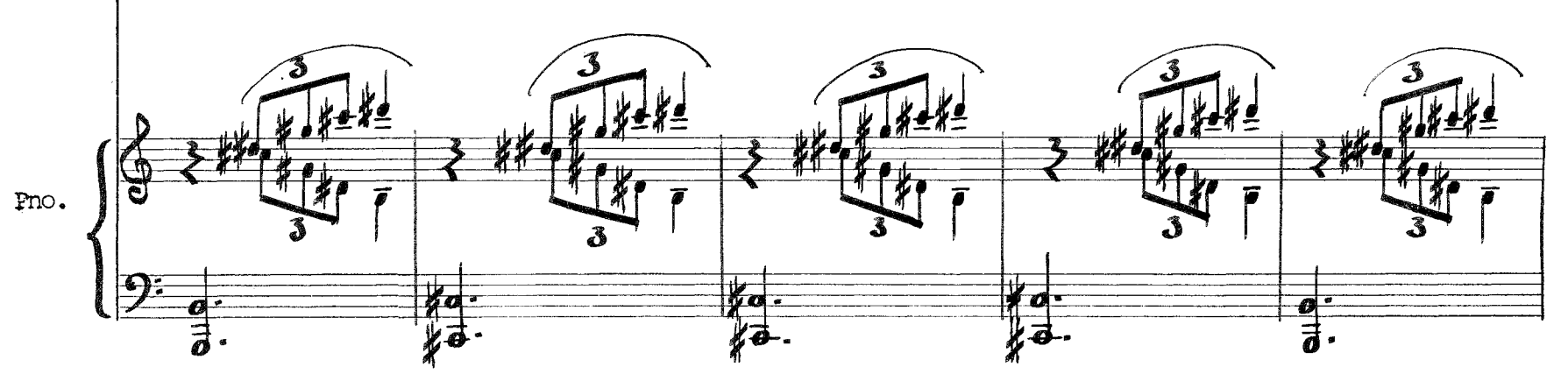
Fl. \_\_\_\_\_

Trbn. \_\_\_\_\_

Perc. \_\_\_\_\_

Sopr. \_\_\_\_\_

SVAR-TE; DEN SOM VIL MITT FOT-SPOR FYL - LE, LER KJE AV BLID - OM HJARTA FOR

Pno. 

15

Fl.

Trbn.

Perc. Campanelli

Sopr.

MÅN-EN SKIN —'E, OG VEG-JIN-E FAL-LE SÅ VI — DE.

15

Pno.



Fl.

Trbn.

Perc.

Sopr.

NA NA-NA NA NA NA NA NA O.S.V....

Pno.

Fl.

Trbn.

Perc.

Sopr.

Pno.

*accelerando* -----

*mp*

*mf*

*ff*

Piu mosso  
 16 ♩ = ca. 108

Fl.

Trbn.

Perc.

Sopr.

Pno.

*f*

*accel* -----  
 Piu mosso  
 16 ♩ = ca. 108

Pno.

*f*

Fl.

Trbn.

Perc.

Sopr.

f

FYS-STE EGA VAR U TEKS-TI,

Pno.

17

Fl.

Trbn.

Perc.

Sopr.

FÓR I-VI TYN-NYR-MOG! SUND-E GJEKK MI SKAR-LAKS-

17

Pno.



Fl.

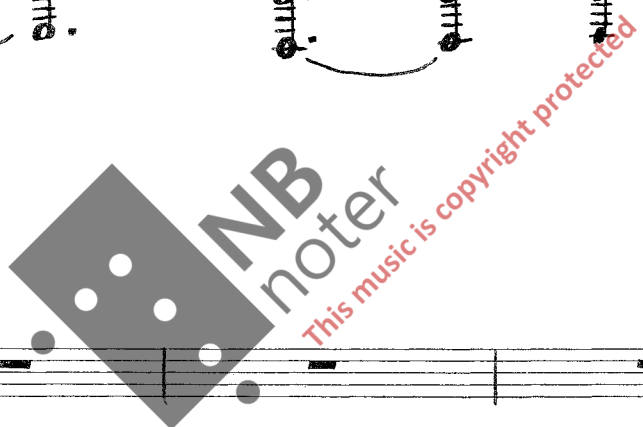
Trbn.

Perc. Xilofono

Sopr.

- KÅ - PE OG NEG-LAN AV KVØR MIN FOT, AV KVØR MIN FOT.

Pno.



Fl.

Trbn.

Perc.

Sopr.

Pno.

accelerando

Fl.

Trbn.

Perc.

Sopr.

accelerando

Pno.

Piu mosso

19 ♩ = ca. 126

Fl.

Trbn.

Perc.

Sopr.

Piu mosso

19 ♩ = ca. 126

Pno.

20

Fl.

Trbn.

Perc. Xilofono

Sopr.

20

Pno.

Fl.

Trbn.

Perc.

Sopr.

Pno.

21

Fl.

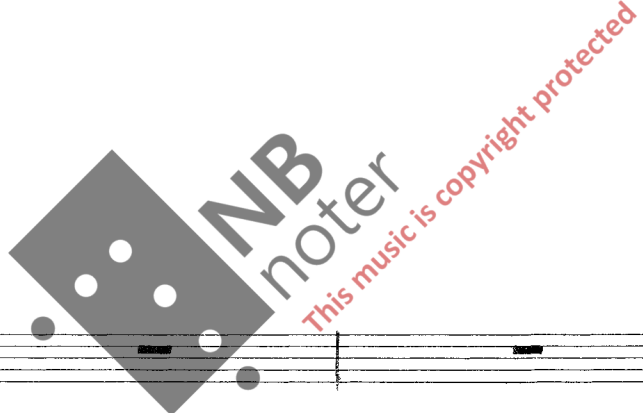
Trbn.

Perc.

Sopr.

21

Pno.



Fl.

Trbn.

Perc.

Sopr.

Pno.



♩ = ♩.  
22 ♩ = 189 (♩. = 126)

Fl.

Trbn.

Perc.

Sopr.

KJEM EG MEG ÅT GJAL-LAR - BRU - i;

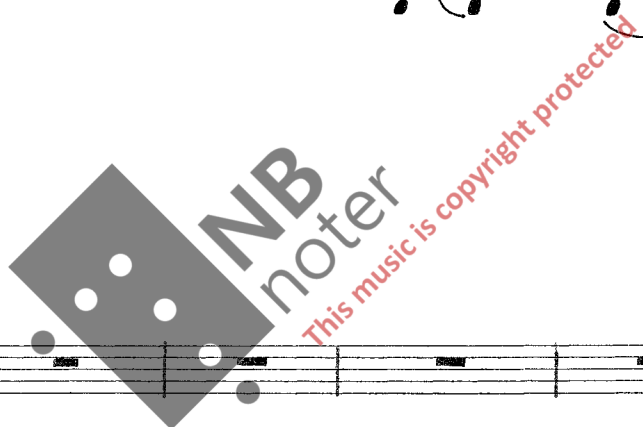
P

22

P

Pno.

*mf*



Fl.

Trbn.

Perc.

Sopr.

Ho - HENG'E SÅ HÅGT i VIN-DE; HO ER ÒLL MED GUL LE SLE-GSI

P

Pno.

Fl.

Trbn.

Perc.

Sopr.

OG — SAUM i KVOR-JOM TIN-DE.

Pno.

Fl.

Trbn.

Perc.

Sopr.

Xilofono

Pno.

Sub. ff

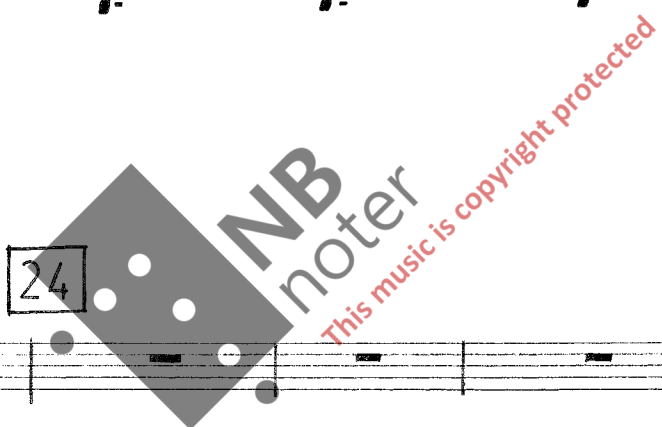
Fl.

Trbn.

Perc.

Sopr.

Pno.



24

Fl.

Trbn.

Perc.

Sopr.

EG HEV GJEN-Gji GJAL-LAR — BRU-i, HO ER

24

Pno.

Fl.

Trbn.

Perc.

Sopr.

BÅ — DE BRATT OG LEI; VAS — SA HEV EG DEI VÅ — SE — MYR — AN', NO —

Pno.



Fl.

Trbn.

Perc.

Sopr.

ER EG KVIT — TE DEI.

Pno.

Fl.

Trbn.

Perc.

Sopr.

Pno.



Fl.

Trbn.

Perc.

Sopr.

Xilofono

Pno.



Fl.

Trbn.

Perc.

Sopr.

Pno.

Fl.

Trbn.

Perc.

Sopr.   
 VA' — i HEV EG DEI VÅ — SE — MYR-AN, DER — HEV KSE

Pno.

Fl.

Trbn.

Perc.

Sopr.

STA-i MEG GRUNN; NO HEV EG GJEN-GI GJAL-LAR - BRU-i MED - RA - PA

Pno.

Fl.

Trbn.

Perc.

Sopr.

MOLD i MUNN.

Pno.



Fl.

Trbn.

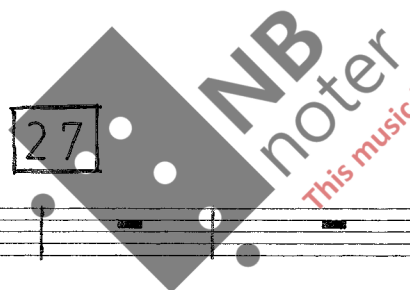
Perc.

Sopr.

Pno.



27



Fl.

Trbn.

Perc.

Sopr.

27

Pno.



28

Fl.

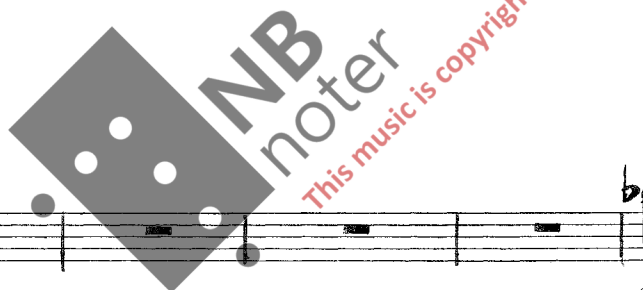
Trbn.

Perc.

Sopr.

28

Pno.



Fl.

Trbn.

Perc.

Sopr.

Xilofono

Pno.

Fl.

Trbn.

Perc.

Sopr.

Pno.

29  $\text{♩} = \text{ca. } 60$

Fl.

Trbn.

Perc.

Sopr.

29  $\text{♩} = \text{ca. } 60$

KJEM EG MEG ÅT PI-LE-GRIMS-KYR-KJUN, DER VAR MEG IN-GEN MANN KJEN-DE,

Pno.

Fl.

Trbn.

Perc.

Sopr.   
 BER-RE HO GO-DE GUD-MOR MI MED RAV-DE GULL PÅ HEN-DE. i BROKK-SVAL-IN

Pno.

30

Fl.

Trbn. *Rubato* *Rit* *accelerando* *Rit*  
*P* *f*

Perc.

Sopr.   
 DER SKO DOM-EN STAN ——— DE,

30

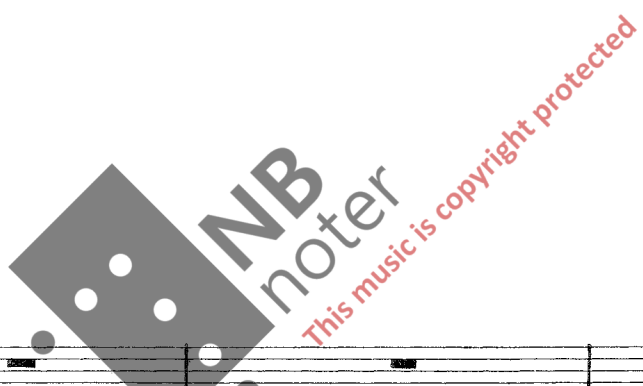
Fl. *meno mosso*

Trbn. *P* *pp* *accelerando* ----- *2 tempo* *f*

Perc.

Sopr.

Pno.



Fl.

Trbn. *pp* *Piu lento* *accelerando* ----- *2 tempo* *f*

Perc.

Sopr.

Pno.

31 Più mosso  
♩ = ca. 100

Fl.

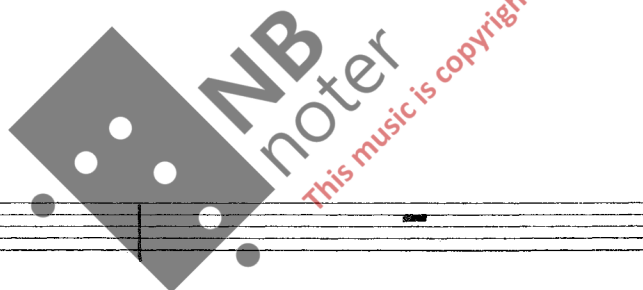
Trbn.

Perc. Xilofono

Sopr.

31 Più mosso  
♩ = ca. 100

Pno.



Fl.

Trbn.

Perc. mp

Sopr. mf

DER KOM FER — DI NORD — AN — TIL, DET TOT — TE EG VA — RA

Pno. mf



Fl.

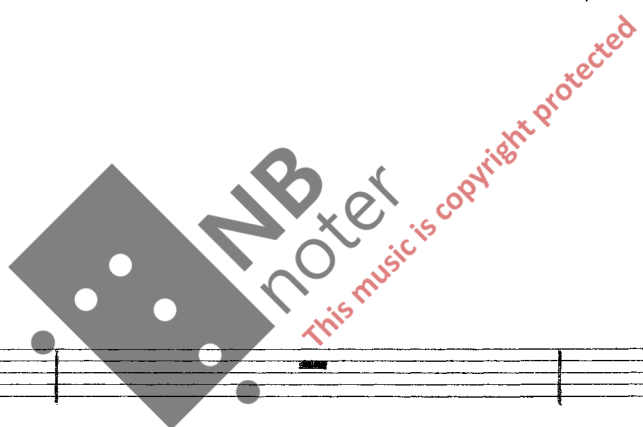
Trbn.

Perc.

Sopr.

Pno.

VESST; FY-RE REI GRUT-TE GRÅ — SKJEG-GJE, HAN



Fl.

Trbn.

Perc.

Sopr.

Pno.

REI PÅ SVAR-TAN HEST. BROKK-SVAL-IN

*fp*

*fp*

Fl.

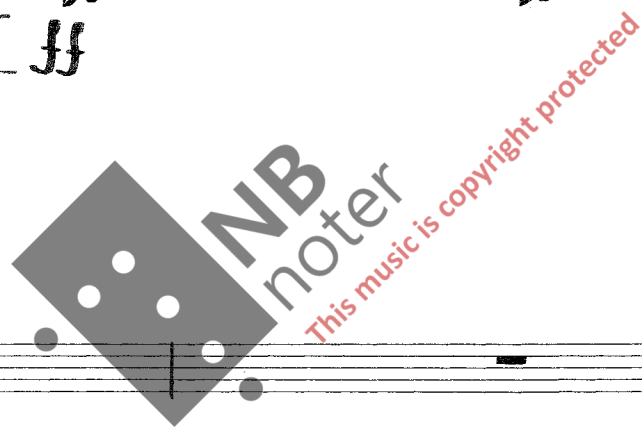
Trbn.

Perc.

Sopr.

DER SKØ DOM-EN STAN-DE.

Pno.



Fl.

Trbn.

Perc.

Sopr.

Pno.

32

Fl.

Trbn.

Perc.

Sopr.

32

Pno.

Fl.

Trbn.

Perc.

Sopr.

Pno.



Fl.

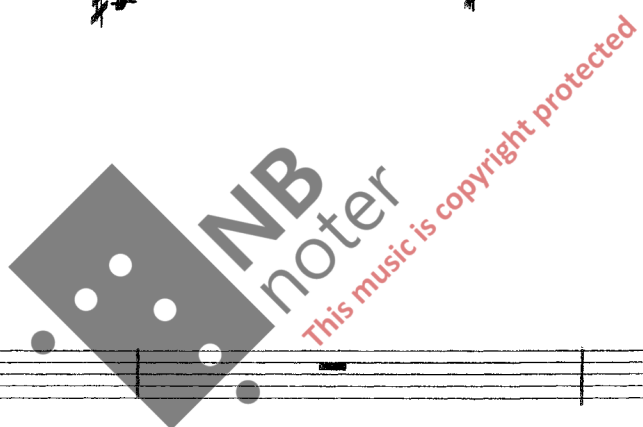
Trbn.

Perc.

Sopr.

Pno.

33



Fl.

Trbn.

Perc.

Sopr.

33

Pno.

Fl.

Trbn.

Perc.

Sopr.

SUNN — AN — TI, DET TOT-TE MEG VA — RA BEST;

Pno.

Fl.

Trbn.

Perc.

Sopr.

FY — RE REI SANK — TE SÅ — LE — MIK — KJEL, HAN REI PÅ KVIT — AN

Pno.

34

Fl. [Musical staff]

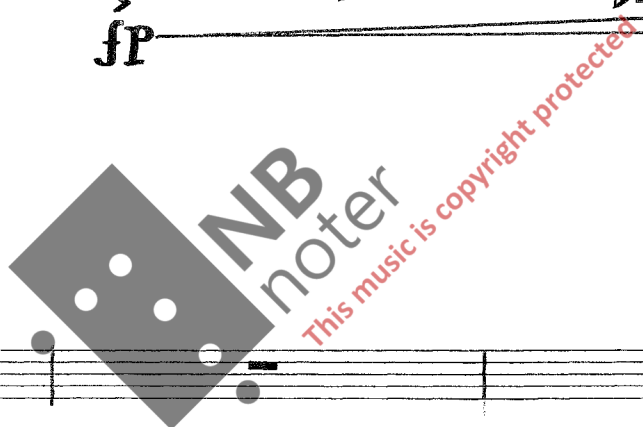
Trbn. [Musical staff]

Perc. [Musical staff]

Sopr. HEST. i BROKK - SVAL - in DER SKØ DOM - EN **fp**

34

Pno. [Musical staff] **fp**



Fl. [Musical staff]

Trbn. [Musical staff]

Perc. **ff** [Musical staff]

Sopr. [Musical staff]

STAN - DE. **ff**

Pno. [Musical staff] **ff**

35

Fl.

Trbn.

Perc.

Sopr.

35

Pno.

Fl.

Trbn.

Perc.

Sopr.

Pno.



Fl. *mf*

Trbn.

Perc. *mf*

Sopr.

Poco rit... a tempo

Pno. *mf*

Fl.

Trbn.

Perc.

Sopr. *P*

DET VAR SANK-TE SÅ — LE-MIK-KJEL, HAN

Pno.

NB  
noter  
This music is copyright protected

36

36



Fl.

Trbn.

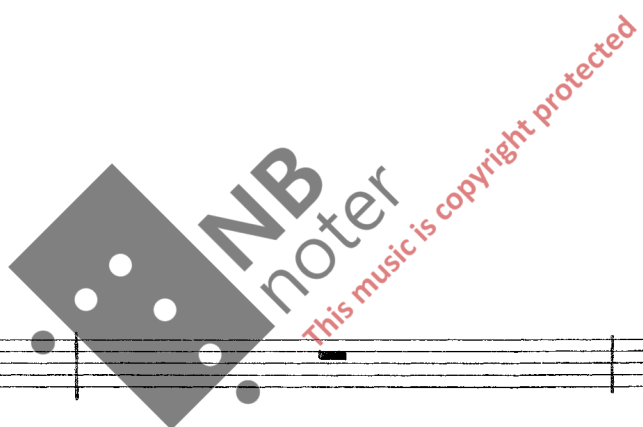
Perc.

Sopr.

BLES i LUR-EN LAN-GE: "OG NO SKØ

Pno.

Detailed description: This system contains five staves. The top four staves are for Flute (Fl.), Trombone (Trbn.), Percussion (Perc.), and Soprano (Sopr.). The Soprano staff has a vocal line with lyrics: "BLES i LUR-EN LAN-GE: 'OG NO SKØ". The piano (Pno.) part is on the bottom staff, featuring a complex arpeggiated accompaniment with many beamed notes and slurs.



Fl.

Trbn.

Perc.

Sopr.

AL — LE SÅ — LI — NE FRAM FYR DOM-EN GAN — GE!" :

Pno.

Detailed description: This system contains five staves. The top four staves are for Flute (Fl.), Trombone (Trbn.), Percussion (Perc.), and Soprano (Sopr.). The Soprano staff has a vocal line with lyrics: "AL — LE SÅ — LI — NE FRAM FYR DOM-EN GAN — GE!" followed by a colon. The piano (Pno.) part is on the bottom staff, continuing the arpeggiated accompaniment from the first system.

Fl.

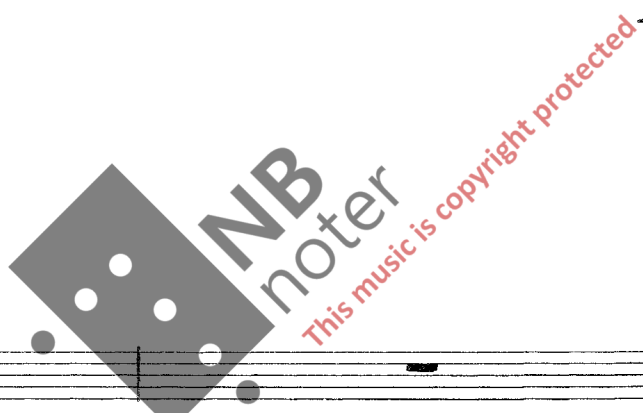
Trbn.

Perc.

Sopr.

BROKK— SYAL—IN DER SKÒ DOM— EN STAN — DE.

Pno. /



Fl.

Trbn.

Perc.

Sopr.

Pno.

*mf*

37

Fl. [Musical staff]

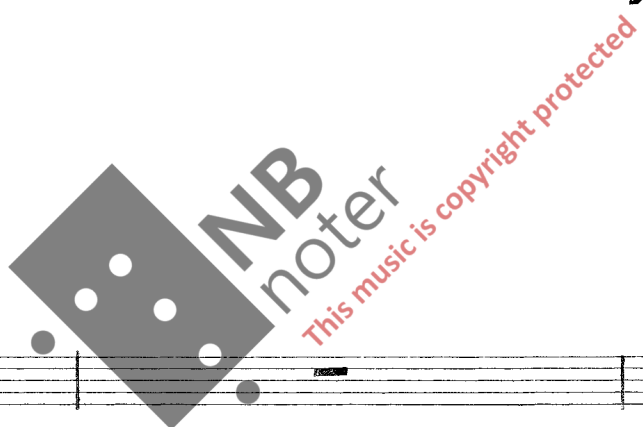
Trbn. [Musical staff]

Perc. [Musical staff]

Sopr. *mf*  
DET VAR SANK-TE SÅ — LE MIK-KJEL, HAN VOG : SKÅ-LE—

37

Pno. [Musical staff]



Fl. [Musical staff]

Trbn. [Musical staff]

Perc. [Musical staff]

Sopr.  
VIKT; SÅ VOG HAN AL-LE SYN — DE-SÅ-LI-NE

Pno. [Musical staff]

Fl.

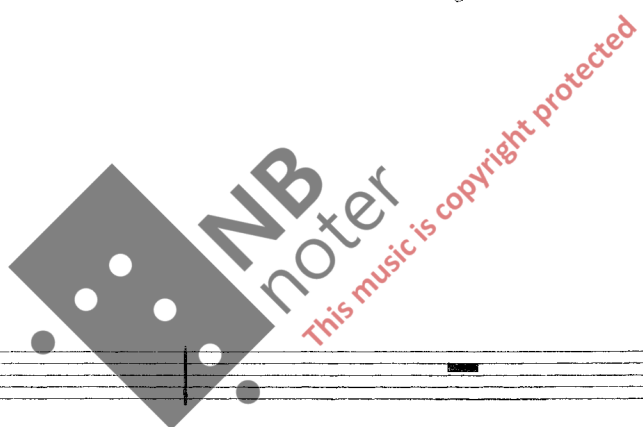
Trbn.

Perc.

Sopr.

BORT TIL JE — SUM KRIST. i BROKK-SVAL-IN

Pno.



Fl.

Trbn.

Perc.

Sopr.

DER SKØ DOM — EN STAN — DE.

Pno.



38

Fl.

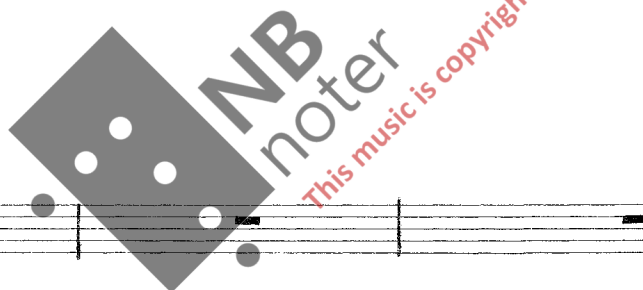
Trbn.

Perc. Campanelli

Sopr.

38

Pno.



Fl.

Trbn.

Perc.

Sopr.

Pno.



39 ♩ = ca. 92

Fl. [Musical staff]

Trbn. [Musical staff]

Perc. Rit [Musical staff]

Sopr. mf [Musical staff]  
SÆL ER DEN- i FØ'-ES-HEIM-EN FAT-TI-GE GJE-VE SKO: HAN

Pno. Rit [Musical staff]



Fl. [Musical staff]

Trbn. [Musical staff]

Perc. [Musical staff]

Sopr. [Musical staff]  
TAR IN-KJE BERR-FØTT GAN-GE PÅ KVAS-SE HEK-LE-MOG. TUN-GA TA-LAR, OG SAN-NING SVAR-AR PÅ

Pno. [Musical staff]

40

Fl.

Trbn.

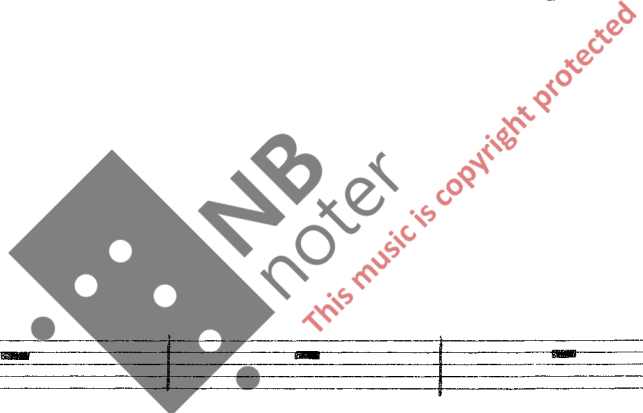
Perc.

Sopr.

DO-ME-DAG. SÆL ER DEN - i FØ-ES-HEIM-EN FAT-TI-GE GJE-VE KU: HAN

40

Pno.



Fl.

Trbn.

Perc.

Sopr.

TAR IN-KJE SUM-LUG GAN — GE PÅ HÅ-GE GJAL-LAR-BRU. TUN-GA TA-LAR, OG SAN-NING SVARAR PÅ

Pno.

41

Fl.

Trbn.

Perc. Campanelli  
P

Sopr.  
DO-ME-DAG.

41

Pno.

P



42

Fl.

Trbn.

Perc.

Sopr.  
SÆL ER DEN - i FØ-ES-HEIM-EN FAT-TI-GE GJE-V'E BRAU: HAN

42

Pno.

mf

Fl.

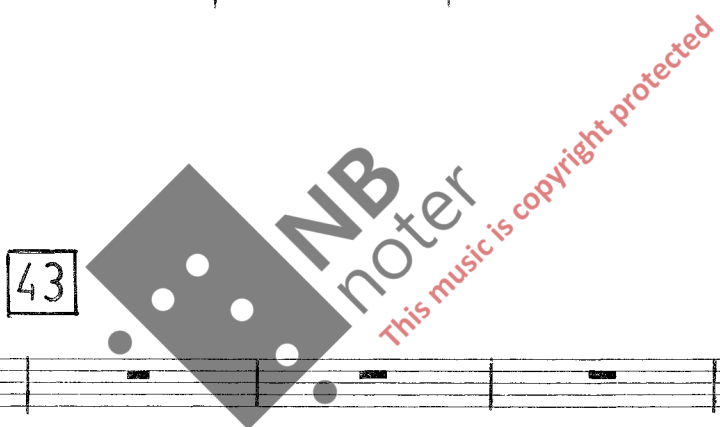
Trbn.

Perc.

Sopr. 

TAR IN-KJE RÆ-AST I AU-ROM-HEIM-E FYR HØRSKE HUN-DE-GAV. TUN-GA TA-LAR, OG SAN-NING SVAR-AR PÅ

Pno.



43

Fl.

Trbn.

Perc. 

Sopr. 

DO-ME-DAG.

43

Pno.



44

Fl.

Trbn.

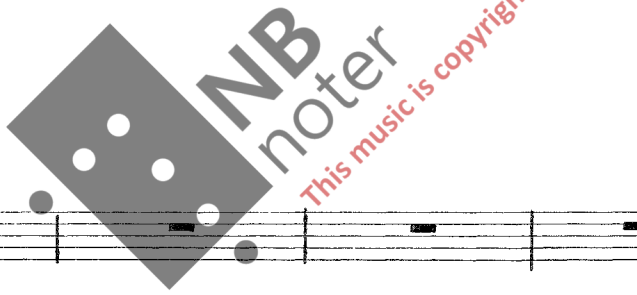
Perc.

Sopr.

*f*

44

Pno.



Fl.

Trbn.

Perc.

Sopr.

Pno.



Rit. --- meno mosso

45 ♩ = ca. 63

Fl.

Trbn.

Perc.

Sopr.

Pno.

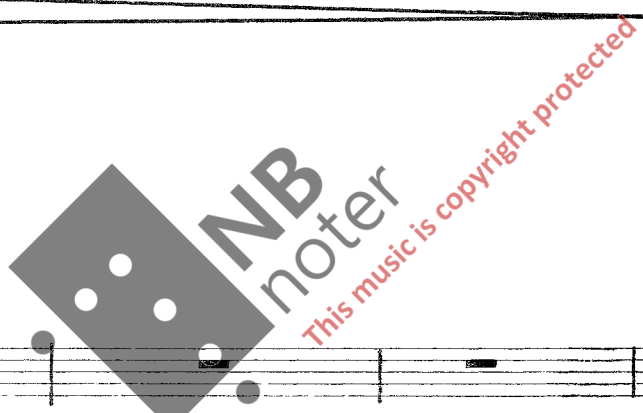
Rit. --- meno mosso ♩ = ca. 63

GAM-LE MEN-NAR OG UN — GE DEI

8.

P

PP



Fl.

Trbn.

Perc.

Sopr.

Pno.

GJE-VE ET-TER GAU-ME; DET VAR HAN O — LAV ÅS-TE-SON, NO HEV HAN TÅLT SI-NE DRAU-ME. OG

Rit -----

Fl.

Trbn.

Perc.

Sopr.

DET VAR O-LAV ÅS-TE-SON, SOM HE-VI SO-VI SÅ LENG-JE.

8.

Pno.

Ståle Kleiberg 1994-95

