

Ståle Kleiberg

Magnificat

- for women's choir, mezzo soprano and organ



This music is copyright protected



Ståle Kleiberg

Magnificat

- for women's choir, mezzo soprano and organ



This music is copyright protected

Commissioned by Nidarosdomens jentekor



Magnificat

Ståle Kleiberg

$\text{♩} = \text{ca. } 76$

S 1
MY SOUL MY SOUL DOTH MAG-NI-FY MAG-NI-FY MY

S 2
MY SOUL MY SOUL DOTH MAG-NI-FY MAG-NI-FY MY

A 1
MY SOUL MY SOUL DOTH MAG-NI-FY MAG-NI-FY MY

A 2
MY SOUL DOTH MAG-NI-FY MAG-NI-FY

$\text{♩} = \text{ca. } 76$

org.

ped.

S 1
SOUL MY SOUL DOTH MAG-NI-FY DOTH MAG-NI-FY THE

S 2
SOUL MY SOUL DOTH MAG-NI-FY DOTH MAG-NI-FY THE

A 1
SOUL MY SOUL DOTH MAG-NI-FY DOTH MAG-NI-FY THE

A 2
MY SOUL DOTH MAG-NI-FY DOTH MAG-NI-FY THE

org.

ped.

Piu mosso
♩ = ca. 92

1

S 1
f LORD,

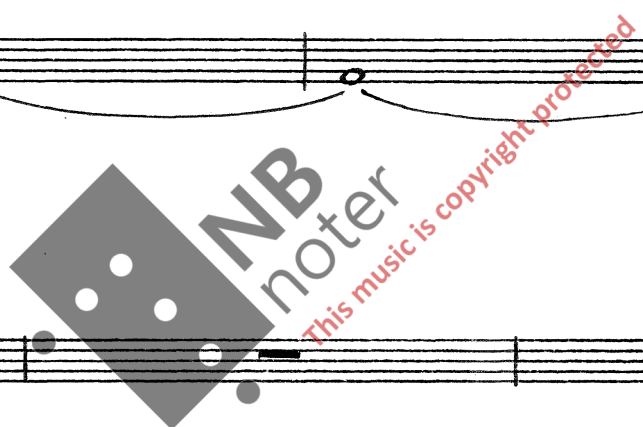
S 2
f LORD,

A 1
f LORD,

A 2
f LORD,

org. f

ped.



S 1

S 2

A 1

A 2

org. p

ped. p

S 1
GOD IN GOD MY SA — VIOUR, FOR

S 2
GOD IN GOD MY SA — VIOUR, FOR

A 1 *mf*
AND MY SPI — RIT HATH RE — JOICED IN GOD IN GOD MY SA — VIOUR, FOR

A 2 *mf*
AND MY SPI — RIT HATH RE — JOICED IN GOD IN GOD MY SA VIOUR, FOR

org. *mf*

ped.

2

S 1 *p*
HE HATH RE — GARD — ED THE LOW — LI — NESS OF HIS HAND — MAID — EN;

S 2 *p*
HE HATH RE — GARD — ED THE LOW — LI — NESS OF HIS HAND — MAID — EN;

A 1 *p*
HE HATH RE — GARD — ED THE LOW — LI — NESS OF HIS HAND — MAID — EN;

A 2 *p*
HE HATH RE — GARD — ED THE LOW — LI — NESS OF HIS HAND — MAID — EN;

2

org. *p*

ped.

S 1 FOR BE-HOLD FROM HENCE-FORTH ALL GE-NE-RA-TIONS SHALL CALL ME
 S 2 FOR BE-HOLD FROM HENCE-FORTH ALL GE-NE-RA-TIONS SHALL CALL ME
 A 1 FOR BE-HOLD FROM HENCE-FORTH ALL GE-NE-RA-TIONS SHALL CALL ME
 A 2 FOR BE-HOLD FROM HENCE-FORTH ALL GE-NE-RA-TIONS SHALL CALL ME
 org.
 ped.

3
 S 1 BLESSED, FOR HE THAT IS MIGH-TY HATH MAG-NI-FIED ME
 S 2 BLESSED, FOR HE THAT IS MIGH-TY HATH MAG-NI-FIED ME
 A 1 BLESSED, FOR HE THAT IS MIGH-TY HATH MAG-NI-FIED ME
 A 2 BLESSED, FOR HE THAT IS MIGH-TY HATH MAG-NI-FIED ME
 3
 org.
 ped.

4

S 1
MAG-NI-FIED ME AND HO-LY HO-LY IS HIS NAME,

S 2
MAG-NI-FIED ME AN HO-LY HO-LY IS HIS NAME,

A 1
MAG-NI-FIED ME AND HO-LY HO-LY IS HIS NAME,

A 2
MAG-NI-FIED ME AND HO-LY HO-LY IS HIS NAME,

org.

ped.

4

S 1

S 2

A 1

A 2

org.

ped.

Poco meno mosso
♩ = ca. 88 mf

Solo

AND HIS MER-CY IS ON THEM THAT FEAR HIM THROUGH-

org.

ped.

Solo

OUT ALL GE-NE-RA — TIONS HE HATH SHEWED STRENGTH WITH HIS ARM HE HATH

org.

ped.

5

Solo

SCAT — TERED THE PROUD IN THE i-MA-GI — NA — TION OF THEIR HEARTS. HE HATH PUT

org.

ped.

3

8.

Solo

DOWN THE MIGH-TY FROM THEIR SEAT, AND HATH EX-ALT-ED THE HUMB-LE AND THE

org.

ped.

Solo

MEEK. HE HATH FILLED THE HUNG-RY WITH GOOD THINGS AND THE

org.

ped.

Solo

RICH HE HATH SENT EMP-TY A — WAY.

org.

ped.

Solo

org.

ped.

Solo

HE RE — MEM — BERING HIS

decrescendo

org.

ped.

Solo

MER-CY HATH HOL-PEN HIS SER-VANT IS — RA — EL AS HE

org.

ped.

7

mf

SOLO

PRO — MISED PRO-MISED TO OUR FORE — FATH — ERS A — BRA — HAM AND HIS

S 1

S 2

A 1

A 2

7

mf

org.

ped.

SOLO

SEED FOR EV-ER FOR EV-ER FOR EV-ER *ff*

S 1

S 2

A 1

A 2

GLO-RY BE TO THE

GLO-RY BE TO THE

GLO-RY BE TO THE

GLO-RY BE TO THE

GLO-RY BE TO THE

org.

ped.

8

S 1 FA — THER AND TO THE SON, AND TO THE HO — LY HO — LY GHOST;

S 2 FA — THER AND TO THE SON, AND TO THE HO — LY HO — LY GHOST;

A 1 FA — THER AND TO THE SON, AND TO THE HO — LY HO — LY GHOST;

A 2 FA — THER AND TO THE SON, AND TO THE HO — LY HO — LY GHOST;

org.

ped.

S 1 GLO — RY BE TO THE FA — THER AND TO THE SON, AND TO THE

S 2 GLO — RY BE TO THE FA — THER AND TO THE SON, AND TO THE

A 1 GLO — RY BE TO THE FA — THER AND TO THE SON, AND TO THE

A 2 GLO — RY BE TO THE FA — THER AND TO THE SON, AND TO THE

org.

ped.

meno mosso

$\text{♩} = \text{ca. } 76$

S 1 HO — LY GHOST HO — LY GHOST; AS IT WAS IN THE BE —

S 2 HO — LY GHOST HO — LY GHOST; AS IT WAS IN THE BE —

A 1 HO — LY GHOST HO — LY GHOST; AS IT WAS IN THE BE —

A 2 HO — LY GHOST HO — LY GHOST; AS IT WAS IN THE BE —

org.

ped.

Piu mosso

$\text{♩} = \text{ca. } 84$

S 1 GIN — NING, IS NOW AND EV — ER SHALL BE;

S 2 GIN — NING, AND EV — ER SHALL BE;

A 1 GIN — NING, EV — ER SHALL BE;

A 2 GIN — NING, SHALL BE;

org.

ped.

9

S 1 *p* WORLD WITH-OUT WORLD WITH-OUT WITH-OUT
 S 2 WITH-OUT END WITH-OUT END
 A 1 *p* WORLD WITH-OUT WITH-OUT END WITH-OUT
 A 2 *p* WORLD WITH-OUT WITH-OUT END WITH-OUT
 org. *p*
 ped.

Rit. ----- Poco meno mosso
 S 1 END A MEN
 S 2 END A MEN
 A 1 END A MEN
 A 2 END A MEN
 org. *p*
 ped.

