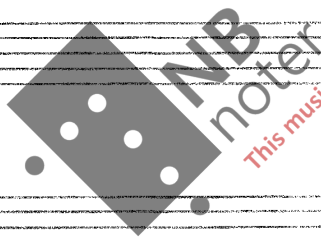


"Liten Høstsonate"

Korsuite i
3 satser

av
Christian Killegreen

1. "AUGUST" Tekst: Einar Skjæraasen
for like stemmer, piano, triangel og woodblocks
2. "DRØMMEN" Tekst: Arne Randers Thorstenson
for like stemmer, piano og cymbal.
3. "SEPTEMBERNATT" Melodi: Ragnfrid Rise Hoel
for like stemmer. Tekst: Ola Setrom



This music is copyright protected

1.
~ August ~

Einar Skjaraasen

for like stemmer, piano, triangel
og woodblocks.

Christian Killengreen

$\text{♩} = \text{ca. } 60$

Kor
Triangel
woodbl.
Piano
Ped.

1809801 A.F. ♯ Oktavene følger på hverandre med en åttedels ♯ avstand. © 1981-82

de-nne skjel-ven-de streng

Soprani:

Alt:

Handwritten musical score for Soprano and Alto parts. The Soprano part begins with the lyrics "de-nne skjel-ven-de streng". The Alto part has some notes with "tr." (trill) above them. The music is in a key with one sharp (F#) and a 4/4 time signature.

me-rom sommer og høst,

de-nne dugg

Handwritten musical score for Soprano and Alto parts. The Soprano part continues with lyrics "me-rom sommer og høst, de-nne dugg". The Alto part has lyrics "den-ne dugg av av-skjed i". The music includes dynamic markings like "mf" and "f".

av av-skjed i mi-ne hen-

der.

Handwritten musical score for Soprano and Alto parts. The Soprano part has lyrics "av av-skjed i mi-ne hen-der." and "mi-ne hen-der." The Alto part has lyrics "der." and "der." The music includes dynamic markings like "mf" and "f".

1. + 2. sopr.

de-ss he-mme-lig

mi-

ide inn o-ver

Handwritten musical score for Soprano and Alto parts. The Soprano part has lyrics "de-ss he-mme-lig mi-ide inn o-ver". The Alto part has lyrics "inn o-ver". The music includes dynamic markings like "mf" and "f".

Tempo: ♩ = ca. 76

jo- rden, de- nne ly- en- de still- het: Tal He- rre,

mp

ritto

tal! De- te ly- set som hvi- ler på

ritto

ritto

mo- dri- ngen hø- je, de- te ly- set som hvi- ler på

ritto

To sopr. solister

hvi- pler på mo- den. Væns hø- de,
 mo- den- næns hø- de,

mf

triangel

hø- de, hø- de, dre- ler og syn- ker ma-
 og syn- ker ma-
 Tutti

Tutti

ker på vi- sning-ens del. 2 Di- sse kre-der da
 vi- sning-ens del.

♩ = ca. 100

2/4

mf

rit.

tror er som sky-gger i sky-ggen.

mp dolce

5/4

triangel

Sopr. Solist
Den-ne e-ter-ars-fred o-ver skd og for-stand.

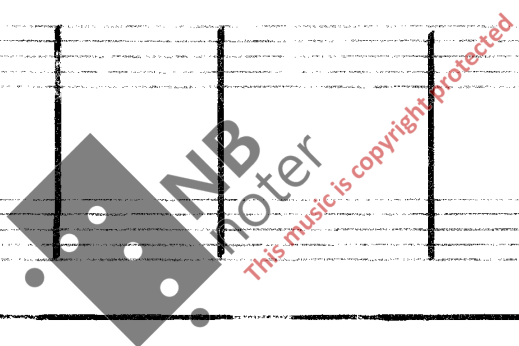
Alt Solist
Den-ne e-ter-ars-fred o-ver skd og for-stand.

mp

Handwritten musical score for the first system. It consists of four staves. The top staff is a vocal line with lyrics: "Di-esse kre-der da trær er som". The second staff is a piano accompaniment line. The third and fourth staves are also piano accompaniment lines. Dynamics include *ppp* and *m-*. A *Ped.* marking is present at the end of the system.

Handwritten musical score for the second system. It consists of four staves. The top staff is a vocal line with lyrics: "sky-gger i sky-ppen, er som sky-gger i sky-ppen, er som". The second staff is a piano accompaniment line. The third and fourth staves are also piano accompaniment lines. Dynamics include *mf* and *alleg*. A watermark "NB noter" and "This music is copyright protected" is visible over the score.

Handwritten musical score for the first system. It consists of five staves. The top two staves are vocal lines in G major (one sharp). The bottom three staves are piano accompaniment. The lyrics are: "sky-gger i sky-ggen, ersom sky-gger i sky-ggen, ersom 4 4 sky-gger i sky-".



Handwritten musical score for the second system. It consists of five staves. The top two staves are vocal lines. The bottom three staves are piano accompaniment. The lyrics are: "ggen, sky-gger i sky-ggen, sky-gger i 3 sky-ggen, 4 Con bocca chiusa, ...". Performance instructions include "Ritardando al..." and "Con bocca chiusa, ...". Dynamics include "mf", "cresc.", and "ff". The bottom staff is labeled "woodblocks" and "decrese...".

Ped.

Sopr. solist

(♩ = ca. 76)

Musical staff for Soprano soloist, showing a melodic line with various notes and rests.

Jeg har drømt at jeg rej- de mot E- vig- he- ten,

Musical staff for piano accompaniment, showing chords and rhythmic patterns.

Musical staff for piano accompaniment, showing chords and rhythmic patterns.

Gr. av 1. Alt.

Musical staff for 1st Alto, showing a melodic line with various notes and rests.

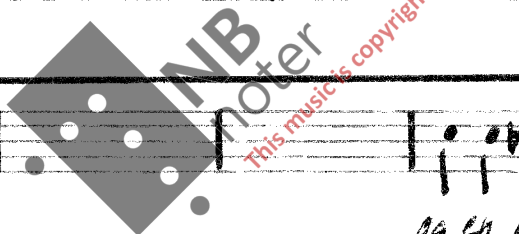
triangel

Jeg har drømt at jeg

Musical staff for piano accompaniment, showing chords and rhythmic patterns.

mp

0/10/4



Musical staff for piano accompaniment, showing chords and rhythmic patterns.

og en kved i Au- gust var den

Musical staff for piano accompaniment, showing chords and rhythmic patterns.

triangel

Musical staff for piano accompaniment, showing chords and rhythmic patterns.

rej- de mot E- vig- he- ten,

og en kved i Au-

Musical staff for piano accompaniment, showing chords and rhythmic patterns.

Musical staff for piano accompaniment, showing chords and rhythmic patterns.

mf

mp

første be-syn-der-lig du-se kje-ning av land, du-se kje-ning av

ppp mp du-se kje-ning av land,

gust var den første be-syn-der-lig
triangel

mp

land.

du-se kje-ning av land, land.

glizz.*)

du-se kje-ning av land,

mf f

triangel Woodblocks triangel

mp

* Glissanden utføres på siste fire del i takten.

Sopr.
solist +
1. alt

Jeg vet midt i alt det jeg i-kke vet: Au- gust er det

A.

mp cresc.....

my-kes-te my-ke. jeg kje-naer,

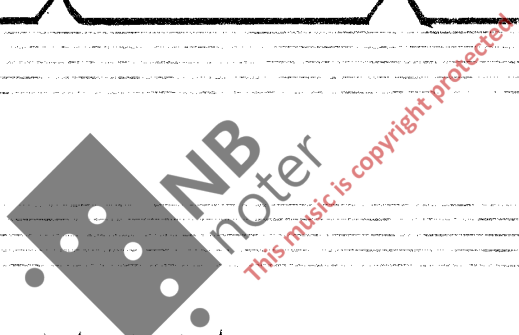
m- jeg vet midt i

Ped.

Jeg vet at Au- gust, jeg vet at Au- gust er det my-kes-te

Jeg vet midt i alt det jeg i-kke vet: Au- gust er det my-kes-te

alt det jeg i-kke vet: Au- gust er det my-kes-te my-ke jeg



my-ke -

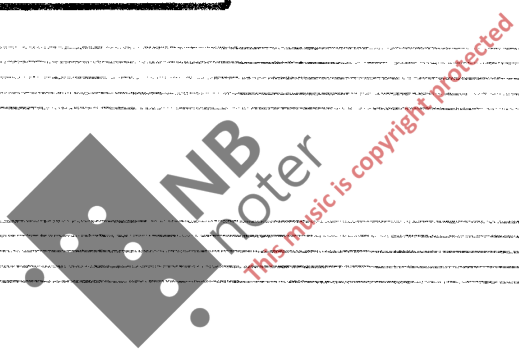
my-ke - my-ke som sorg og som kjar-lyg-het, my-ke som sorg og som

kj- nner,

Poco rit.

kjar-liq-het, kjar-liq-het. Au-gust! trianpel

15.01.83



~ Drømmen ~
Ame Randers Thorstenson

for
like stemmer, piano
og cymbal.

Christian Killengreen

Sosteruto $\text{♩} = \text{ca. } 76$

idist

S
Kor
A

piano

Jeg kommer fra kommen-de

døgn i det blå, døgn i et du-ven-de tå-ke-blått ri-ke.

a- lle hø- rte jeg dø- ming gå og var- slå- te ter- ner skri- ke.

Handwritten musical score for the first system. It features a vocal line with lyrics and three staves of piano accompaniment. The lyrics are: "a- lle hø- rte jeg dø- ming gå og var- slå- te ter- ner skri- ke." The piano part consists of chords and arpeggiated figures.

Solister

Kor

1
2
3
4

Solister

Kor

cymbal?

Handwritten musical score for the second system. It includes parts for Solister (Soloists) and Kor (Chorus). The Solister part has a melodic line with a fermata. The Kor part has a rhythmic accompaniment. There are four numbered staves for Solister and four for Kor. A cymbal part is also indicated with a question mark. The lyrics "1. (Én) cymbal slått på med paukespiller." are written at the bottom.

1. (Én) cymbal slått på med paukespiller.

Handwritten musical score for a percussion ensemble. It consists of five staves. The top two staves are for snare drums, the middle for cymbals, and the bottom for tom-toms. The notation includes various rhythmic patterns, rests, and dynamic markings. A specific cymbal pattern is labeled "cymbal 2".

Soli

Handwritten musical score for a vocal ensemble. It features seven staves labeled S1, S2, A1, and A2. The score includes vocal lines with notes and rests, and a cymbal part for S2. A large watermark "NB noter" is overlaid on the score.

Tranquillo, con bocca chiusa. $\text{♩} = \text{ca. } 58$

mp

2: (En) cymbal slått på med trommestikke(r).

mp

mp

mp

Individuelle tempi

decresc. pp

decresc. pp

decresc. pp

decresc. pp

decresc. pp

decresc. pp

= ca. 58

piano

mf

3

*) Etter denne stammens 4. repetisjon går hver sanger i hver stemme over i individuelle tempi.

Herfra går sopranene gradvis ^{og umerkkelig} over til unison giss¹. Ved stjerne, kun denne tone.

decresc.

Herfra går altene gradvis ^{og umerkkelig} over til unison giss. Ved stjerne, kun denne tone.

decresc.

Ped.

Soli

A

S
Kor

A

Piano

Ped.



A-
mf

*

00

00

.ppp

Rit.

Rit.

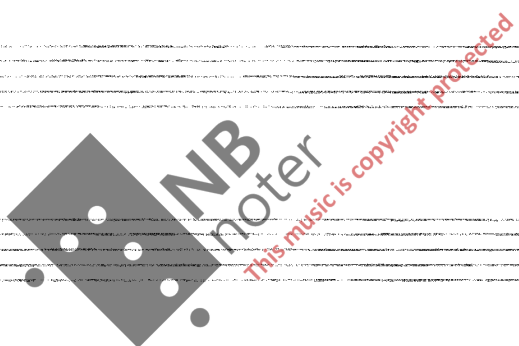
A tempo

Soli

A

Piano

Ped.



Soli

Piano

Ped.

cymbal²

Soli A

S Kor A

Piano

her ved det le-ven-des le-ve er san-se-rie blitt meg så

va-re så va-ke: -8- Ter-ne-hes skrik kan jeg hø-re dø og

Handwritten musical score for the first system. It includes a vocal line with lyrics, a piano accompaniment, and a cymbal part. The piano part features chords with accidentals and dynamics like "mf" and "olmo". The cymbal part has rhythmic markings.

dø-ning-en gå til- ba- ke.

Handwritten musical score for the second system. It includes a vocal line with lyrics, a piano accompaniment, and a cymbal part. The piano part features chords with accidentals and dynamics like "olmo" and "Rit.". The cymbal part has rhythmic markings and a "Ped." marking.

29.03.83

3.

~ Septembernatt ~

Ola Setrom

Mel.: Ragnfrid Rise Høel
Arr. og harmon.: Christian Killengreen

Rolig
 $\text{♩} = \text{ca. } 76$ < *oss.* >

S
Kor
A

mf Å- 1. Gar- na står a- tter stj- nnom, og

eg ligg langt i- mi fjell. Eg ser det blin- kar frå

Sopr. solist

stj- Det er natt en sep- tem- ber- kveld. Å- 2. Eg 3. Så

nar i-kke tyd e-ller hy-tte, men att-med lin stin har eg
 er eg kje rint a- li- ne: Ei- den min go- de

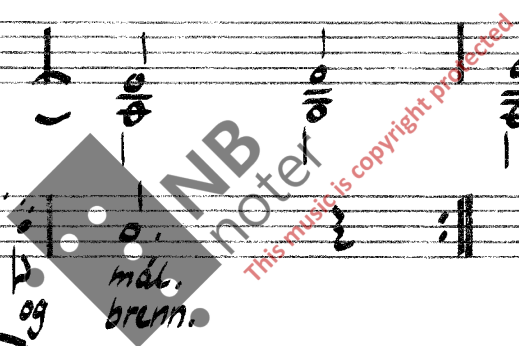
Con bocca chiusa, legato.

bål- ven, Bå- runn på tj- nna skva- lar og
 hi- trar og ti- trar i e- lne,

su- slar med va- ke måt.
 fra- sar, lo- gar og brenn.

4. Så er det stilt og mid- natt, alt blun- dar i ro og

4. Så er det stilt og mid- natt, alt blun- dar i ro og



kvild. Tan- kann sva- nar og el- den slo- knar, slo- knar, knar,

sjølv er du i- kke til. A- (-)

13.12.82

