



NB  
notes

Kjell mörk karlsen

» SINFONIA FACILE »

over en sonate av  
Jean B. Loeillet (1680 - 1730)

opus 68

Orkester m/ bl. kor

BESTILLINGSVERK TIL ROGALAND UNGDOMSSYMFONIORKESTER  
OG ROGALAND UNGDOMSKOR

O R C H E S T R A

2 Flutes  
2 Oboes  
2 Clarinets in B  
2 Bassoons

2 Horns in F  
2 Trumpets in B

Timpani

Tambourine

Triangle

Cymbal

2 Woodblocks

Snare Drum

Bass Drum

3 players

Mixed Choir

Strings

Durata: 16 min.

# Sinfonia facile

Kjell Mörk Karlsen

Adagio ♩ = 88 1. „Preludium”

2 Flutes

2 Oboes

2 Clarinets in B

2 Bassoons

2 Horns in F

2 Trumpets in B

Timpani

Tambourine

Cymbal s.c.

Snare Drum

Glockenspiel

Triangle

Bass Drum

Mixed Choir

Soprano (S)

Alto (A)

Tenor (T)

Bass (B)

Violins I

Violins II

Violas

Cellos

Double Basses







Fl. *lo* *mf* *pp* *p tr. 4* *cresc.*

Ob. *pp* *p tr. 4* *cresc.*

Cl. *mf* *pp* *p tr. 4* *cresc.*

Bn. *pp* *tr. 4* *cresc.*

Hn. *pp* *cresc.*

Trpt. *pp* *cresc.*

Timp. *cresc.*

Tamb. *cresc.*

S. Drum *tr.* *p* *cresc.*

Gl. sp. *mf*

S *p a* *cresc.*

A *p a* *cresc.*

T *p a* *cresc.*

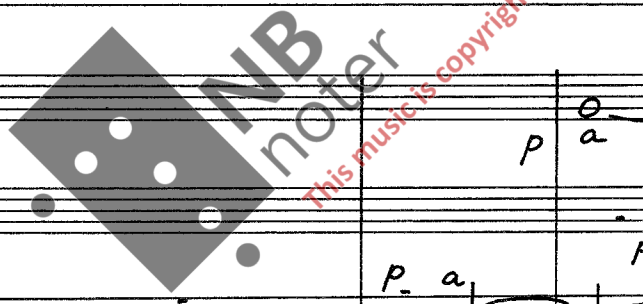
B *p a* *cresc.*

Vln. *mp* *div.* *p* *div.* *cresc.*

Vla. *div.* *p* *cresc.*

Vlc. *p* *cresc.*

D. b. *tutti* *arco* *p* *cresc.*



rit. ----- Allegro ♩ = 120

Fl. 15 *d.* *d.* *a2*

Ob. *ff*

Cl. *ff*

Bn. *ff* *f* *a2*

Hn. *f* *ff* *f* *mf*

Trpt. *f* *ff* *mf* *f* *mf*

Timp. *tr.* *3-3* *ff* *f* *ff* *f*

Cymb. *mp* *ff* *ff* *tr.*

S.Dr. *ff* *f* *ff* *f*

Gl.sp. *ff* *f* *ff* *f*

15 rit. ----- Allegro

S *a* *a* *a* *a* *ff*

A *a* *a* *a* *a* *ff*

T *a* *a* *a* *a* *ff*

B *a* *a* *a* *a* *ff*

15 rit. ----- Allegro

Vln. *mp* *f* *ff* *f*

Vla. *f* *ff* *f*

Vlc. *f* *ff* *f*

D.b. *f* *ff* *f*

20

Fl. *ff* *f* *mp* *mp*

Ob. *f* *f* *mf*

Cl. *f* *mf*

Bn. *f* *mf*

Hn. *mf* *f* *p* *tr*

Trpt. *mf* *f* *p* *tr*

Timp. *ff* *ff* *p*

Cymb. *ff* *tr*

S.Dr. *mf* *ff*

Gl.sp. *f* *p*

20

S

A

T *mf* *a* *a*

B *mf* *a* *a*

20

Vln. *f* *ff* *mp* *dolce*

Vla. *f* *ff* *mf* *mp* *dolce* *div.*

Vlc. *f* *ff* *mf* *mp* *div.* *mp*

D.b. *f* *ff* *mp* *pizz* *mp*



25

Fl. *mf*

Ob. *mf*

Cl. *mf*

Bn. *mf* *f tr. P* *a2* *f*

Hn. *f*

Trpt. *f*

Timp. *f tr.*

Cymb. *mf* *mp cresc.*

S.Dr. *mf* *mp cresc.*

Gl.sp. *f*

S *mf* *a* *cresc.* *f a*

A *mf* *a* *cresc.* *f a*

T *a* *cresc.* *f a*

B *a* *cresc.* *f a*

Vln. *mf* *div.* *f*

Vla. *f*

Vlc. *f*

D.b. *arco* *f*

Adagio 30

Fl. *tr*

Ob. *tr*

Cl. *tr*

Bn. *tr*

Hn. *tr*

Trpt. *tr*

Timp. *tr*

Cymb. *tr*

S.Dr. *tr*

Gl.sp. *tr*

*ff* Triangle

*pp*

Adagio 30

S

A

T

B

*ff*

*a*

Adagio 30

Vln. *mp cantabile*

Vla. *mp cantabile*

Vlc. *mp*

D.b. *mp pizz.* *arco*

*ff*

Handwritten musical score for a symphony orchestra and vocal ensemble. The score is written on a page numbered - 8 -. The instruments and parts are:

- Fl. (Flute)
- Ob. (Oboe)
- Cl. (Clarinet)
- Bn. (Bassoon)
- Hn. (Horn)
- Trpt. (Trumpet)
- Timp. (Timpani)
- Cymb. (Cymbal)
- S. Dr. (Snare Drum)
- Gl. sp. (Glockenspiel)
- S. (Soprano)
- A. (Alto)
- T. (Tenor)
- B. (Bass)
- Vln. (Violin)
- Vla. (Viola)
- Vlc. (Violoncello)
- D. b. (Double Bass)

The score includes various musical notations such as notes, rests, dynamics (p, pp, mp), articulation (accents, slurs), and performance instructions (tr, Gl. sp.). A large watermark "MNB noiter" is visible across the center of the page, along with a red diagonal line and the text "this music is copyright protected".



rit. ----- Allegro

- 9 -

35

Fl. *p* *f* *ff*

Ob. *p* *f* *ff*

Cl. *pp* *f* *ff*

Bn. *a2* *f* *ff*

Hn. *cresc.* *f* *ff*

Trpt. *f* *ff*

Timp. *f* *tr.*

Cymb.

S. Dr.

Gl. sp. *f*

rit. ----- Allegro

*mf*

S *a* *ff* *a* *p*

A *a* *ff* *a* *#d*

T *8*

B

35 rit. ----- Allegro

Vln. *f* *ff*

Vla. *f* *ff div.*

Vlc. *f* *ff*

D. b. *f* *ff*

40

Fl. *mf* *f*

Ob. *mf* *mf p*

Cl. *mp* *mf* *mf*

Bn. *mp* *mp*

Hn. *mf* *f* *f*

Trpt. *f* *mf* *f*

Timp. *mf* *tr.* *p cresc.*

Cymb. *mp*

S.Dr. *mp*

Gl.sp. *mp*

40

S *mf* *f a* *f a cresc.*

A *ff a* *mf* *f a cresc.*

T *ff a* *mf* *f a cresc.*

B *mf a* *mf a* *cresc.*

40

Vln. *mf* *f*

Vla. *mf div* *f*

Vlc. *mp* *mp*

D.b. *p* *mp*

45 Adagio

Fl. *ff*

Ob. *ff* *a2*

Cl. *ff*

Bn. *ff* *a2*

Hn. *ff* *a2* *3* *3*

Trpt. *ff* *a2* *3* *3*

Timp. *ff*

Tamb. *ff*

Cymb. *ff*

S. Dr. *ff*

Gl. sp. *ff*

*mf*

*tr*

*mf*

45 Adagio

S. *gliss*

A. *gliss*

T. *gliss*

B. *gliss*

*ff* *mf a*

*ff* *mf a*

*ff* *mf a*

*ff* *mf a*

*ff* *mf a*

Adagio

45 Div.

Vln. *ff* *mp* *Div.*

Vla. *ff* *mp* *Div.*

Vlc. *ff* *mp*

D. b. *ff* *mp*



Fl.

Ob. 1. mp

Cl.

Bn.

Hn.

Trpt.

Timp. tr

Tamb. mp tr Triangle pp

Gl.sp. p pp

S. p a pp

A. p a pp

T. p a pp

B. p a pp

Vln. pp p

Vla. pp p

Vlc. pp

D.b. pp

pizz. sempre

pizz. sempre

50

Fl.

Ob.

Cl.

Bn.

Hn.

Trpt.

Timp.

Triang.

Gl.sp.

*mf*

*p*

*mp*

50

S

A

T

B

*mf*

*p*

50

Vln.

Vla.

Vlc.

D.b.

*mf*

*p*

Fl. *f* *mp* *f* *ff* *f*

Ob. *f* *mp* *f* *ff* *f*

Cl. *f* *mf* *f* *ff* *f*

Bn. *f* *mf* *f* *ff* *f*

Hn. *mf* *a2* *mf* *f* *ff* *f*

Trpt. *mf* *a2* *mf* *f* *ff* *f*

Timp.

Triang.

Cymb.

S.Dr. *f* *ff* *f*

Gl.sp.

S

A

T

B

55

Vln. *mf* *f* *ff* *f*

Vla. *mf* *div.* *f* *ff* *f*

Vlc. *mf* *arco* *mf* *f* *ff* *f*

D.b. *mf* *arco* *mf* *f* *ff* *f*

55



60

Fl. *ff*

Ob. *ff*

Cl. *ff*

Bn. *ff*

Hn. *sub p* *f*

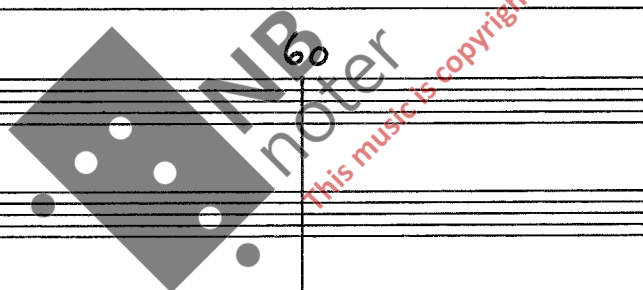
Trpt. *mp* *ff*

Timp. *ff* *p* *tr*

Cymb. *ff* *p* *tr*

S.Dr. *ff* *p* *tr*

Gl.sp. *ff* *mf* *f* *ff* *ff* *p* *Bass Drum* *ff* *p*



S

A

T

B

60

Vln. *ff* *mp* *div.* *ff*

Vla. *ff* *mp* *mf* *f* *ff*

Vlc. *ff* *mp* *mf* *f*

D.b. *ff* *mp* *mf* *f*



# 2. „Pastisj”

Vivace  $\text{♩} = 96-100$

5

2 Flutes

2 Oboes

2 Clarinets in B

2 Bassons

2 Horns in F

2 Trumpets in B

Timpani

Snare Drum

Wood high  
Blocks low

Bass Drum

Glockenspiel

I  
Violins

II

Violas

Cellos

Double Basses



10

Fl.

Ob.

Cl.

Bn.

Hn.

Trpt.

Timp.

S. Dr.

W. bl.

B. Dr.

Gl. sp.

*fp* *fp* *f* *ff* *f* *ff* *f<sub>tr</sub>* *ff*

*tr* *tr*

10

15

Vln.

Vla.

Vlc.

D. b.

*div.* *f* *ff* *f* *ff* *f* *ff* *f* *ff*

*arco*

Fl. 20 25  
Ob. mf p  
Cl. 1. mf p mp  
Bn. p  
Hn.  
Trpt.  
Timp.  
S.Dr. p pp  
W.bl. mp p  
Vln. 20 25  
Vla.  
Vlc. p pp  
C.b.

Handwritten musical score for woodwinds and strings, measures 30-35. The score is written in treble clef with a key signature of one sharp (F#). The time signature is 2/8, which changes to 3/8 at measure 30. The instruments are Flute (Fl.), Oboe (Ob.), Clarinet (Cl.), Bassoon (Bn.), Snare Drum (S. Dr.), Woodblock (W. bl.), Violin (Vln.), Viola (Vla.), Violoncello (Vlc.), and Double Bass (D. b.).

Measures 30-35 are marked with a '30' and a '35' respectively. The woodwind parts (Fl., Ob., Cl., Bn.) feature melodic lines with various dynamics such as *p* (piano) and *mp* (mezzo-piano). The string parts (Vln., Vla., Vlc., D. b.) include rhythmic patterns and dynamics like *p* and *pizz.* (pizzicato). The Snare Drum and Woodblock parts are marked with rhythmic notation and dynamics like *mp*.

A watermark for 'NB noter' is visible in the center of the page, with the text 'this music is copyright protected' written diagonally across it.



40 45

Fl. *a2* *mp* *f*

Ob. *a2* *mf* *f*

Cl. *a2* *mp* *f*

Bn. *mp* *f*

Hn. *mp* *mp* *f* *a2*

Trpt. *ff* *p*

Timp. *mp* *f* *mf*

S. Dr. *f* *mf*

W. bl. *f* *mf*

B. Dr. *mp* *mf*

40 45

Vln. *f* *mp* *f* *mp*

Vla. *f* *mp* *f* *mp*

Vlc. *p* *f* *mp* *f* *mp*

D. b. *p* *f* *mp* *f* *mp*

50

Fl. *f* 1.  $b \pm b \pm b \pm b$  # 7 7

Ob. *f* 1.  $b \pm b \pm b \pm b$  # 7 7

Cl. *f* 1.  $b \pm b \pm b \pm b$  # 7 7

Bn. *f* 1.  $b \pm b \pm b \pm b$  # 7 7

Timp. *f*

50

Vln. *f*  $b \pm b \pm b \pm b$  # 7 7

Vla. *f*  $b \pm b \pm b \pm b$  # 7 7

Vlc. *f*  $b \pm b \pm b \pm b$  # 7 7

D.b. *f*  $b \pm b \pm b \pm b$  # 7 7





Fl. *f* *p* *mf* *p*

Ob. *f* *p* *f* *p*

Cl. *f* *p* *mf* *p*

Bn. *f* *p* *mf* *p*

Hn. *ff* *mf*

Trpt. *f*

Timp. *p*

S.Dr. *p*

W.bl. *f* *p*

Gl.sp. *f* *p*

Vln. *p* *pp*

Vla. *p* *pp*

Vlc. *p*

D.b. *pizz.* *p*

70 75

Fl. 1 2

Ob. 1 2

Cl. 1 2

Bn.

Hn.

Trpt.

S.Dr.

Vln. 1 2

Vla.

Vlc.

D.b.

*Watermark: NB noter, this music is copyright protected*

80

85

Fl. 1  
Fl. 2  
Ob. 1  
Ob. 2  
Cl. 1  
Cl. 2  
Bn.  
Hn.  
Trpt.

mp mf

S. Dr.

mp mf

Vln.  
Vla.  
Vlc.  
D. b

mp cresc. arco ff



Fl. *ff* *90*

Ob. *ff*

Cl. *ff*

Bn. *ff*

Hn. *f* *ff*

Trpt. *f* *ff*

Timp. *f* *tr* *mf* *ff*

S. Dr. *f* *tr* *ff* *ff*

B. Dr. *mf* *mf*

Vln. *ff* *mf* *div.* *ff*

Vla. *ff* *mf* *div.* *ff*

Vlc. *ff* *mf* *div.* *ff*

D. b. *arco* *ff* *mf* *ff*

95 100

Fl. *mp* *mf* *f*

Ob.

Cl. *mp* *a2* *p* *a2* *p*

Bn.

Timp. *p*

W.bl.

Vln. *p* *f<sub>2</sub>* *p*

Vla. *p* *f<sub>3</sub>* *p*

Vlc. *p* *f<sub>3</sub>* *p*

D.b. *p* *f<sub>3</sub>* *p*

This page contains a handwritten musical score for woodwinds and strings. The score is divided into two systems, each with a rehearsal mark: 105 and 110. The woodwind section includes parts for Flute (Fl.), Oboe (Ob.), Clarinet (Cl.), Bassoon (Bn.), and Wood Bass (W.b.). The string section includes Violin (Vln.), Viola (Vla.), Violoncello (Vlc.), and Double Bass (D.b.). The score features various musical notations such as notes, rests, slurs, and dynamic markings (mf, mp, p, f, fp). The woodwinds play melodic lines, while the strings provide harmonic support with rhythmic patterns. A large watermark for 'NB noter' is visible across the center of the page.

105 110

Fl.

Ob.

Cl.

Bn.

W.b.

Vln.

Vla.

Vlc.

D.b.

*NB noter*  
This music is copyright protected



115

Fl. *mf*

Ob.

Cl. *mf*

Timp. *mp* *pp*

115

Vln. *mf* *p*

Vla. *mf* *p*

Vlc. *mf* *p*

D.b. *mf* *p*



130

135

Fl. 1, 2

Ob. 1, 2

Cl. 1, 2

Bn.

Hn.

Timp.

S.Dr.

W.bl.

Gl.sp.

*mf*, *pp*, *mp*, *p*, *tr*

Vln.

Vla.

Vlc.

D.b.

130

135

*pp*, *p*, *pi33*



140

145

Fl. 1  
Fl. 2  
Ob. 1  
Ob. 2  
Cl. 1  
Cl. 2  
Bn.  
Hn.  
Trpt.  
Timp.  
S.Dr.  
B.Dr.

Vln.  
Vla.  
Vlc.  
D.b.

150

Fl. 1  
Fl. 2  
Ob. 1  
Ob. 2  
Cl. 1  
Cl. 2  
Bn.  
Hn.  
Trpt.  
Timp.  
S. Dr.  
B. Dr.

This block contains the musical score for the woodwind and percussion sections, measures 145 through 150. The woodwinds (Flute, Oboe, Clarinet, Bassoon) and Horns/Trumpets play melodic lines with various dynamics including *f*, *ff*, and *mf*. The percussion section includes Snare Drum (S. Dr.) and Bass Drum (B. Dr.) parts. A large watermark 'IMB notetaker' is overlaid on the score.

Vln.  
Vla.  
Vlc.  
D. b.

150

This block contains the musical score for the string and double bass sections, measures 145 through 150. The Violins (Vln.), Viola (Vla.), and Violoncello (Vlc.) play melodic lines with dynamics *f* and *ff*. The Double Bass (D. b.) part provides a rhythmic accompaniment with dynamics *f* and *ff*.

155

160

1 Fl. 1 *mf*

2 Fl. 2

1 Ob. 1 *p*

2 Ob. 2

1 Cl. 1

2 Cl. 2

Bn.

Hn. *f* *a2* *p*

Trpt.

Timp. *p*

B. Dr.

155

160

Vln. *p*

Vla. *p*

Vlc.

D. b.



165 170

Fl. Ob. Cl. Bn.

1. 2. pp p mp

w. bl.

pp

165 170

Vln. Vla. Vlc. D. b.

1. 2. pp pp p pizz p pp

175 180

Fl.

Ob.

Cl.

Bn.

W. bl.

175 180

Vln.

Vla.

Vlc.

D. b.

pp

arco

pp

pp

pp

pizz.

pp

div.

This music is copyright protected

185

190

Fl. *p* *mp*

Ob. *mp*

Cl. *p*

Bn.

W. bl.

185

190

Vln. *mp*

Vla. *mp*

Vlc. *mp*

D. b. *mp*



195 200

Fl. *p* *f* *f*

Ob. *p*

Cl. *a2* *p* *mp* *f*

Bn. *pp*

W. bl. *pp*

195 200

Vln. *p*

Vla. *p* *pizz.*

Vlc. *p* *pizz.*

D. b. *p*



This page contains a musical score for a woodwind and string ensemble. The score is divided into two systems. The first system includes parts for Flute (Fl.), Oboe (Ob.), Clarinet (Cl.), Bassoon (Fg.), and Wood Bass (W.bl.). The second system includes parts for Violin (Vln.), Viola (Vla.), Violoncello (Vlc.), and Double Bass (D.b.).

**System 1:**

- Fl.:** Starts at measure 215. Features a melodic line with a dynamic marking of *mp* and *pp*. A tempo marking of 200 is indicated above the staff.
- Ob.:** Starts at measure 215. Features a melodic line with a dynamic marking of *pp*.
- Cl.:** Empty staff.
- Fg.:** Empty staff.
- W.bl.:** Empty staff until measure 219, where it has a dynamic marking of *pp*.

**System 2:**

- Vln.:** Starts at measure 215. Features a melodic line with a dynamic marking of *pp*. A tempo marking of 220 and the instruction *div.* are indicated above the staff.
- Vla.:** Starts at measure 215. Features a melodic line with a dynamic marking of *pp*.
- Vlc.:** Starts at measure 215. Features a melodic line with a dynamic marking of *pp*.
- D.b.:** Starts at measure 215. Features a melodic line with a dynamic marking of *pp*.

The score includes various musical notations such as notes, rests, slurs, and dynamic markings. A large watermark for 'NB noter' is visible across the center of the page.



This musical score page contains six staves of music. The top two staves are for the Trumpet (Trpt.) and the Wood Bass (W.bl.). The bottom four staves are for the Violin (Vln.), Viola (Vla.), Violoncello (Vlc.), and Double Bass (D.b.).

**Trpt. Staff:** Shows measures 225 and 230. At measure 230, there is a melodic line starting with a quarter note G4, followed by eighth notes A4, B4, and C5. The dynamic marking is *mp dolce*.

**W.bl. Staff:** Shows measures 225 and 230. At measure 225, there are handwritten markings '77' and '2 pp'. At measure 230, there are markings '3 77' and 'mp'.

**Vln. Staff:** Shows measures 225 and 230. Dynamic markings include *mf* and *p*.

**Vla. Staff:** Shows measures 225 and 230. Dynamic markings include *mf* and *p*. At measure 230, there is a *div.* marking.

**Vlc. Staff:** Shows measures 225 and 230. Dynamic markings include *mf* and *p*. There are '+' symbols under the notes in measure 230.

**D.b. Staff:** Shows measures 225 and 230. Dynamic markings include *mf* and *p*. At measure 230, there is a *pizz.* marking.

A large watermark 'NB noter' is overlaid on the score, with the text 'This music is copyright protected' written diagonally across it.

235 240

Fl. a2 mf f p

Ob. a2 mf f p

Cl. a2 mf f p

Bn. mf f p pp

Hn. mp p

Trpt. p mp

S.Dr. tr p mf p

W.bl. mf f

235 240 div. p

Vln. f div. p

Vla. f p

Vlc. f p

D.b. f p

245

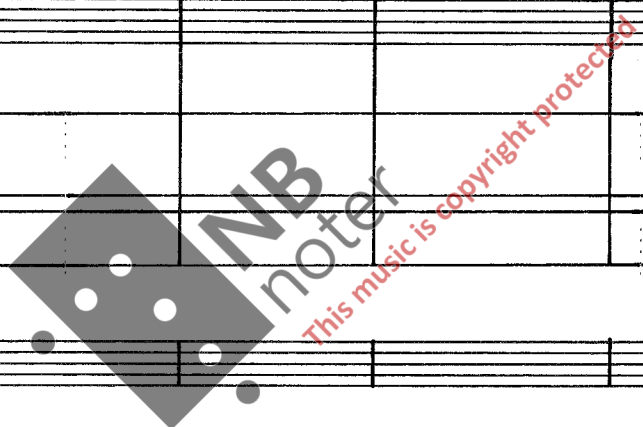
250

Fl.

Musical notation for the Flute part, measures 245-250. It features a melodic line with various dynamics: *mp* (measures 245-246), *f* (measures 247-248), and *mp* (measures 249-250). The notation includes slurs, accents, and a first ending bracket.

Trpt.

Musical notation for the Trumpet part, measures 245-250. It shows a sustained note in measure 245 and a short phrase in measure 246, with a dynamic marking of *p*.



245

250

Vln.

Vla.

Vlc.

D.b.

Musical notation for the string section (Violins, Violas, Cellos, and Double Basses), measures 245-250. The Violins and Double Basses play a rhythmic pattern of eighth notes, while the Violas and Cellos play a similar pattern. Dynamics include *mf* and *p*.



This musical score page, numbered 45, contains parts for various instruments. The woodwind section includes Flute (Fl.), Oboe (Ob.), Clarinet (Cl.), Bassoon (Bn.), and Horn (Hn.). The string section includes Violin (Vln.), Viola (Vla.), Violoncello (Vlc.), and Double Bass (D.b.). The percussion section includes Snare Drum (S.Dr.) and Woodblock (W.bl.).

The score is divided into two systems. The first system covers measures 255 to 260. The Flute part begins at measure 255 with a key signature change to one flat (B-flat major) and a time signature change to 2/8. The Oboe, Clarinet, and Bassoon parts enter at measure 258 with a key signature change to two sharps (D major) and a time signature change to 2/8. The Horn part enters at measure 258 with a key signature change to two sharps (D major) and a time signature change to 2/8. The Snare Drum and Woodblock parts enter at measure 258 with a key signature change to two sharps (D major) and a time signature change to 2/8. The Violin, Viola, Violoncello, and Double Bass parts enter at measure 258 with a key signature change to two sharps (D major) and a time signature change to 2/8.

The second system covers measures 260 to 265. The Flute part continues with a key signature change to one flat (B-flat major) and a time signature change to 3/8. The Oboe, Clarinet, and Bassoon parts continue with a key signature change to two sharps (D major) and a time signature change to 3/8. The Horn part continues with a key signature change to two sharps (D major) and a time signature change to 3/8. The Snare Drum and Woodblock parts continue with a key signature change to two sharps (D major) and a time signature change to 3/8. The Violin, Viola, Violoncello, and Double Bass parts continue with a key signature change to two sharps (D major) and a time signature change to 3/8.

Dynamic markings include *mf* (mezzo-forte) and *mp* (mezzo-piano). Performance instructions include *tr* (trill), *arco div.* (arco divisi), and *div.* (divisi). A watermark for "NB noter" is visible across the score.

265

265

270

This page contains a musical score for an orchestra, spanning measures 265 to 270. The instruments listed are Flute (Fl.), Oboe (Ob.), Clarinet (Cl.), Bassoon (Bn.), Horn (Hn.), Trumpet (Trpt.), Timpani (Timp.), Snare Drum (S. Dr.), Gl. sp. (Glockenspiel), Violin (Vln.), Viola (Vla.), Violoncello (Vlc. div.), and Double Bass (D. b. div.). The score includes various musical notations such as notes, rests, dynamics (e.g., *f*), and articulation marks. A large watermark for 'NB noter' is visible across the center of the page, with the text 'this music is copyright protected' written diagonally.

This page contains a musical score for an orchestra, starting at measure 275. The instruments listed on the left are Flute (Fl.), Oboe (Ob.), Clarinet (Cl.), Bassoon (Bn.), Horn (Hn.), Trumpet (Trpt.), Timpani (Timp.), Snare Drum (S. Dr.), Bass Drum (B. Dr.), Gong (Gl. sp.), Violin (Vln.), Viola (Vla.), Violoncello (Vlc.), and Double Bass (D. b.). The score is written in a key signature of one sharp (F#) and a 2/4 time signature. The music features complex rhythmic patterns, including sixteenth and thirty-second notes, and rests. Dynamics such as *ff* (fortissimo) and *f* (forte) are indicated throughout. A large watermark 'NB noter' is overlaid on the score, with the text 'This music is copyright protected' written diagonally across it.



280

Musical score for woodwinds and percussion. The score includes parts for Flute (Fl.), Oboe (Ob.), Clarinet (Cl.), Bassoon (Bn.), Horn (Hn.), Trumpet (Trpt.), Snare Drum (S.Dr.), and Bass Drum (B.Dr.). The woodwinds play melodic lines with various articulations and dynamics. The percussion parts provide a rhythmic accompaniment. A large watermark 'NB noter' is visible across the score, along with the text 'this music is copyright protected'.

280

Musical score for strings. The score includes parts for Violin (Vln.), Viola (Vla.), Violoncello (Vlc.), and Double Bass (D.b.). The strings play a rhythmic accompaniment with various articulations and dynamics. A large watermark 'NB noter' is visible across the score, along with the text 'this music is copyright protected'.

285

290

Fl.

Ob.

Cl.

Bn.

Hn.

Trpt.

Timp.

S. Dr.

B. Dr.

285

290

Vln.

Vla.

Vlc.

D. b.

Fl. 295 300  
mp pp

W. b. 295 300  
pp

Vln. 295 300  
p div. p

Vla. 295 300  
p

Vlc. 295 300  
p

D. b. 295 300  
p



305 310

Fl. *p* *p* *p* *mp*

Ob. *p*

Cl. *a2* *mp*

W. bl. *p* *p*

305 310

Vln. *mp*

Vla. *mp*

Vlc. *mp* *div.*

D. b. *pizz.* *mp*



320 325

Fl. 1

Fl. 2

Ob. 1

Ob. 2

S. Dr.

320 325

Vln.



330

335

Fl. 1  
Fl. 2  
Ob. 1  
Ob. 2  
Cl. 1  
Cl. 2  
Hn.  
Timp.  
S. Dr.

Fl. 1: *cresc.*  
Fl. 2: *cresc.*  
Ob. 1: *cresc.*  
Ob. 2: *p*, *cresc.*  
Cl. 1: *mp*, *cresc.*  
Cl. 2: *mp*, *cresc.*  
Hn.: *p*, *cresc.*  
Timp.: *tr*  
S. Dr.: *p*, *cresc.*

330

335

Vln.  
Vla.

Vln.: *cresc.*, *mf*  
Vla.: *p*, *cresc.*

Fl. 1  
Fl. 2  
Ob. 1  
Ob. 2  
Cl. 1  
Cl. 2  
Bn.  
Hn.  
Trpt.  
Timp.  
S. Dr.  
B. Dr.

*mf* *cresc.*  
*mp* *cresc.*  
*mf* *mf*

Vln.  
Vla.  
Vlc.  
D. b.

*f* *cresc.*  
*cresc.*  
*cresc.*  
*mf* *cresc.*  
*mf* *f*

345

350

Fl. 1  
Fl. 2  
Ob. 1  
Ob. 2  
Cl. 1  
Cl. 2  
Bn.  
Hn.  
Trpt.  
Timp.  
S. Dr.  
B. Dr.

345

350

Vln.  
Vla.  
Vlc.  
D. b.



355

Fl. 1

Fl. 2

Ob. 1

Ob. 2

Cl. 1

Cl. 2

Bn.

Hn.

Trpt.

Timp.

S. Dr.

B. Dr.

355

Vln. div.

Vla. div.

Vlc. div.

D. b. div.

This music is copyright protected

# Pesante $\text{♩} = 66-72$ 3. „Epilog“

5

2 Flutes

2 Oboes

2 Clarinets in B

2 Bassons

2 Horns in F

2 Trumpets in B

Timpani

Snare Drum

Cymbals c.

Triangle

Glockenspiel

Bass Drum

Mixed Choir

S

A

T

B

Violins I

Violins II

Violas

Cellos

Double Basses

10

Bn.

Hn.

Trpt.

Timp.

S. Dr.

Musical score for Bn., Hn., Trpt., Timp., and S. Dr. staves. The Bn. staff has dynamics *f*, *a2*, *3*, *f*, and *mp*. The Hn. staff has dynamics *fp*, *f*, *mf*, *a2*, and *ff*. The Trpt. staff has dynamics *fp*, *f*, *mp*, and *f*. The Timp. staff has dynamics *mp*, *mf*, *f*, *3*, *tr*, and *dim.*. The S. Dr. staff has dynamics *mf* and *f*.

10

Vln.

Vla.

Vlc.

D. b.

Musical score for Vln., Vla., Vlc., and D. b. staves. The Vln. staff has dynamics *mf*, *f*, *ff*, and *v*. The Vla. staff has dynamics *mf*, *f*, *ff*, and *v*. The Vlc. staff has dynamics *mf* and *f*. The D. b. staff has dynamics *mf* and *f*.



15

Fl.

Ob.

Cl.

Bn.

Hn.

Timp.

15

15

Vln.

Vla.

Vlc.

D.b.

Fl. *mf* *mp* *mp*

Ob. *p* *pp* *p* *pp*

Cl. *pp* *p* *pp*

Bn. *pp* *p* *pp*

Hn. *pp* *pp*

Trpt. *con sord.* *p* *mf* *p* *pp*

Timp.

Gl. sp. *Gl. sp.* *p*

S *mp* *a* *pp* *a*

A *mp* *a* *pp* *a*

Vln. *mf* *pp*

Vla. *mf* *pp*

Vlc. *pizz* *p* *p*

D.b. *pizz* *p* *p*

1. a2 a2 25

Fl. *f* *f* *f* *f*

Ob. *f* *f* *f* *f*

Cl. *mp* *f* *f* *f*

Bn. *mp* *f* *f* *f*

Hn. *f* *p* *mf* *p* *f* *p*

Trpt. *mp* *mf* *mp* *mf* *p*

Timp. *mf* *p* *mf* *p* *mf* *p*

S.Dr. *p* *mf* *mf* *p* *mf* *p* *tr* *mf*

Gl.sp. *mp*

25

S *mf* *a* *a* *cresc.* *a*

A *mf* *a* *a* *cresc.* *a*

T *mf* *a* *a* *cresc.* *a*

B *mf* *a* *a* *cresc.* *a*

25

Vln. *p<sub>n</sub>* *mf<sub>n</sub>* *mp* *cresc.*

Vla. *p<sub>n</sub>* *mf<sub>n</sub>* *mp* *cresc.*

Vlc. *p* *arco* *mp* *cresc.*

D.b. *arco* *mp* *mf* *p* *f* *mp*



Fl.

Ob.

Cl.

Bn.

Hn.

Trpt.

Timp.

S. Dr.

S

A

T

B

Vln.

Vla.

Vlc.

D. b.

Fl.  **mf**

Ob.  **mf**

Cl. <sup>a2</sup>  **mf**

Bn.  **mf**

Hn. <sup>a2</sup>  **mf**

Trpt. <sup>a2</sup>  **mp**

Timp.  **ff**

S. Dr.  **ff**

Cymb.  **mf**

B. Dr.  **f** **mp**

S  **fff**

A  **fff**

T  **fff**

B  **fff**

Vln.  **ff**

Vla.  **mf**

Vlc.  **mf**

D. b.  **f** **ff** **mf**

35

40

Bn.

Hn.

Timp.

Cymb.

35

40

Vln.

Vla.

Vlc.

D. b.



45

Fl. *mp* 1. 3 3 3

Ob. *mf* 1.

Bn. *mf* *pp*

Hn. *mf* *pp* 2.

Gl.sp.

S *p* *a*

A *p* *a*

T *p* *a*

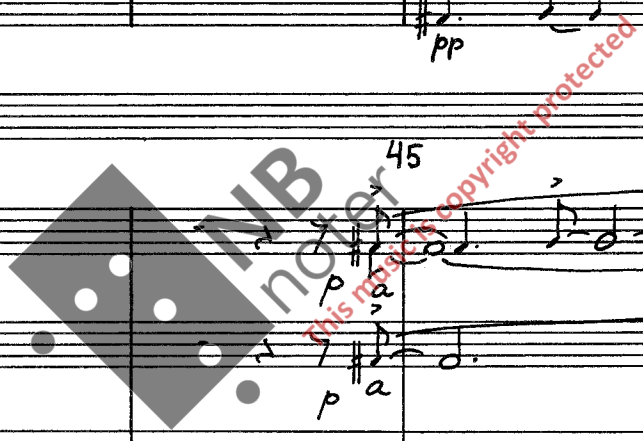
B *p* *a*

Vln. *p* *pp*

Vla. *mf* *f* *p* *mp* *pp* *pp* *Pizz.*

Vlc. *mf* *pp*

D.b. *mf* *pp*





Fl. *p* *mp* *mf* 55

Ob. *mf*

Cl. *a2* *mf* *p*

Bn. *p*

Hn. *mf* *p*

Trpt. *mp* *pp*

S. Dr. *p* *mf*

S. *p* *a* *mf* *pp* *a* 55

A. *p* *a* *mf* *pp* *a*

T. *p* *a* *mf* *pp* *a*

B. *p* *a* *mf*

Vln. *p* 55

Vla. *p*

Vlc. *p*

D.b. *p*











70

75

Ob.

Musical staff for Oboe (Ob.) showing a melodic line with dynamics p and pp, and a triplet of eighth notes.

Hn.

Musical staff for Horn (Hn.) showing a whole note chord at measure 75 with dynamics pp and a second ending bracket.

Timp.

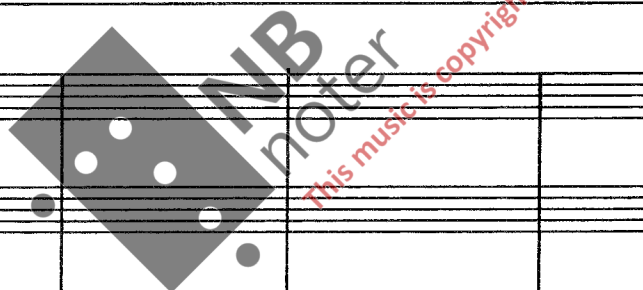
Musical staff for Timpani (Timp.) showing rhythmic patterns with dynamics p and pp.

Gl.sp.

Musical staff for Gl. sp. showing a melodic line starting at measure 75 with dynamics pp.

70

75



Vln.

Musical staff for Violins (Vln.) showing melodic lines with dynamics fp and p.

Vla.

Musical staff for Viola (Vla.) showing melodic lines with dynamics fp and p.

Vlc.

Musical staff for Violoncello (Vlc.) showing a bass line with dynamics pp.

D.b.

Musical staff for Double Bass (D.b.) showing a bass line with dynamics pp.

This page contains a handwritten musical score for page 80. The score is organized into several systems of staves. The top system includes staves for Clarinet (Cl.), Bassoon (Bn.), Horn (Hn.), and Timpani (Timp.). The second system includes Triangle and Glockenspiel (Gl.sp.). The third system is for the vocal quartet, with staves for Soprano (S), Alto (A), Tenor (T), and Bass (B). The bottom system includes Violin (Vln.), Viola (Vla.), Violoncello (Vlc.), and Double Bass (D.b.). The music is written in a key signature of one sharp (F#) and a common time signature (C). Dynamics such as *p*, *pp*, *mf*, and *f* are indicated throughout. Performance markings like *1.*, *v*, and *n* are also present. A large, semi-transparent watermark reading "MUBnoter" and "This music is copyright protected" is overlaid across the center of the page.

85 molto rit. -----

Fl. *p* *pp*

Bn. *p*

Hn. *p*

Timp.

Triangle *ppp*

S. *p* *pp* *a* *ppa*

A. *p* *pp* *a* *ppa*

T. *a* *ppa*

B. *a* *ppa*

Vln. *p* *mf* *pp*

Vla. *p* *mf* *pp* *div.*

Vlc. *p* *pp*

D.b. *p* *pp*

1984