

GEIR JOHNSON:

I DUE MARTELLI
FOR
VIOLIN AND VIOLA



This music is copyright protected

OSLO 1992

I DUE MARTELLI

OR AS ONE NAIL BY STRENGTH DRIVES OUT ANOTHER,
SO THE REMEMBRANCE OF MY FORMER LOVE
IS BY A NEWER OBJECT QUITE FORGOTTEN.

~ SHAKESPEARE SAID.

COMMENT ON THE TECHNIQUE OF WRITING:

THERE ARE TWO STAVES FOR EACH INSTRUMENT, THE UPPER GIVING THE PITCHES, THE LOWER SHOWING A KIND OF TABULATURA, I.E. TELLING THE PLAYER WHAT STRING TO PLAY AT A GIVEN INSTANT. THIS, THE POINT OF THE WORK IS TO BE FOUND IN THE CONTINUOUS COMPLEXITY OF THE RHYTHMIC INTRICACITIES OF THE TABULATURA, WHILE THE PITCHES ARE RELATIVE TO THIS. THE WORK SHOULD BE PLAYED WITH THE TWO HANDS DOING SEPARATE ACTIVITIES. THE LEFT HAND SHOULD BE DOING CONTINUOUS GLISSANDO AS MUCH AS POSSIBLE OR SUITABLE.

THE PERFORMER MAY BE CONFUSED BY THE FACT THAT THERE ARE CHORDS GIVEN ALONG THE UPPER STAVE, WHILE HE/SHE IS ONLY SUPPOSED TO PLAY ACROSS ONE OR TWO STRINGS. THIS HAS TO DO WITH THE FACT THAT THE CONTINUOUS GLISSANDO IN THE LEFT HAND WILL ALWAYS CHANGE POSITION. THIS IS INDICATED IN THE SCORE BY TELLING THE PERFORMER WHEREABOUT HE/SHE IS SUPPOSED TO ENTER WHEN PLAYING ON THE STRING, I.E. IN THE MIDDLE OF WHAT KIND OF GLISSANDO.

GEIR JOHNSON

VI

p martellato

Vla

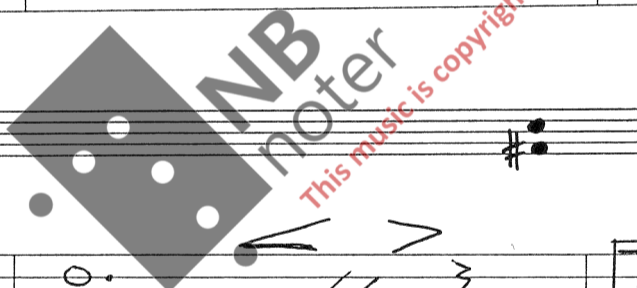
pp martellato

trem.

trem.

5 sim.

pp



A *mf legato*

A *mf legato*

B *mf martellato*

Handwritten musical score, first system. The top staff is in treble clef with a dynamic marking of *f*. The bottom staff is in bass clef and contains a sixteenth-note accompaniment with a *6* fingering and a *sim.* (sustained) marking.

Handwritten musical score, second system. The top staff continues the melodic line with various ornaments. The bottom staff continues the accompaniment with a *7* fingering and a *sim.* marking.

Handwritten musical score, third system. The top staff features a *pp* (pianissimo) dynamic marking. The bottom staff continues the accompaniment with a *7* fingering and a *sim.* marking.

Handwritten musical score, fourth system. The top staff includes accents (>) over several notes. The bottom staff continues the accompaniment.

Handwritten musical score, fifth system. The top staff shows a melodic phrase. The bottom staff continues the accompaniment.

Handwritten musical score, sixth system. The top staff concludes the melodic line. The bottom staff continues the accompaniment.

D

Vla

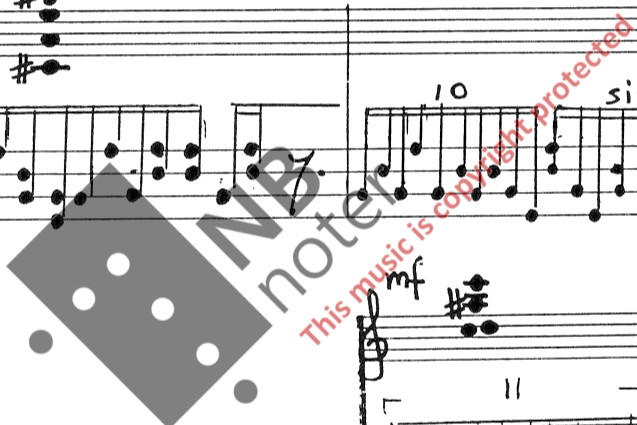
Vla

VL

Vla

VL

Vla



VI

Musical notation for Violin I (VI) in G major. The staff shows a melodic line starting with a fermata, followed by a series of eighth notes and a final half note with a fermata. The dynamic marking is *sim.* (sforzando).

Vla

Musical notation for Viola (Vla) showing a whole rest.

pp al niente

VL

Musical notation for Violin II (VL) in G major. The staff shows a melodic line starting with a fermata, followed by a series of eighth notes and a final half note with a fermata. The dynamic marking is *pp* (pianissimo).

Vla

Musical notation for Viola (Vla) in G major. The staff shows a melodic line starting with a fermata, followed by a series of eighth notes and a final half note with a fermata. The dynamic marking is *pp* (pianissimo).

E

Musical notation for E-flat instrument (E) in G major. The staff shows a melodic line starting with a fermata, followed by a series of eighth notes and a final half note with a fermata. The dynamic marking is *pp* (pianissimo).

Musical notation for E-flat instrument (E) in G major. The staff shows a melodic line starting with a fermata, followed by a series of eighth notes and a final half note with a fermata. The dynamic marking is *fp* (fortissimo piano).

Musical notation for E-flat instrument (E) in G major. The staff shows a melodic line starting with a fermata, followed by a series of eighth notes and a final half note with a fermata. The dynamic marking is *fp* (fortissimo piano).

Musical notation for E-flat instrument (E) in G major. The staff shows a melodic line starting with a fermata, followed by a series of eighth notes and a final half note with a fermata. The dynamic marking is *f* (fortissimo).

Musical notation for E-flat instrument (E) in G major. The staff shows a melodic line starting with a fermata, followed by a series of eighth notes and a final half note with a fermata. The dynamic marking is *f* (fortissimo).

Musical notation for E-flat instrument (E) in G major. The staff shows a melodic line starting with a fermata, followed by a series of eighth notes and a final half note with a fermata. The dynamic marking is *f* (fortissimo).