

Valse Triste.

Tillegnet Aare Nordheim

Alfred Jensen

(5)

Handwritten musical score for the first system, measures 1-5. The score is arranged in a grand staff with five staves: Tenor Saxophone (Ten sak), Bass (Bass), Organ (Org), Guitar (Git), and Contrabass (Cb). The key signature is one flat (B-flat) and the time signature is 4/4. The Tenor Saxophone part features a melodic line with a glissando and a forte dynamic. The Contrabass part includes a pizzicato section and a glissando. A large watermark 'NB! noter' is overlaid on the score.

Handwritten musical score for the second system, measures 6-10. The score continues with the same five staves. The Organ part has a section labeled 'Tom Ts Timbs'. The Guitar part has a section labeled 'Cm 7:5 ad Lib' with a 'ramped' dynamic marking. The Contrabass part includes a glissando and a pizzicato section. A circled measure number '(10)' is written above the first staff of this system.

Handwritten musical score for a rock band, featuring multiple staves for different instruments and sections.

Top Section (Measures 1-4):

- T.S. (Top Staff):** Contains notes with a circled measure number '15' above it.
- Cymb (Cym):** Labeled 'La klinge' with a fermata over the first measure.
- Batt (Bass):** Labeled 'La klinge' with a fermata over the first measure.
- Drum (Drum):** A thick black barred staff.
- Drum Bass (Drum bass):** Labeled 'Cluster uten swell' and 'med høyre vridtrumm'. Includes a fret diagram for frets 7-9.
- Gitar (Guitar):** Labeled 'La klinge' with a circled measure number '20' above it.
- Contra Bass (Cb):** Labeled 'arco' with a fermata over the first measure.

Bottom Section (Measures 5-8):

- T.S. (Top Staff):** Contains notes with a circled measure number '20' above it.
- Cymb (Cym):** Labeled 'Cymb' and 'TomT' with a fermata over the first measure.
- Drum (Drum):** A thick black barred staff.
- Drum Bass (Drum bass):** Labeled 'mp sempre' and 'Dr. b.'. Includes a fret diagram for frets 1-9.
- Gitar (Guitar):** Labeled 'H9' and 'gliss' with a glissando line. Includes a circled measure number '20' above it.

General Notations:

- Tempo/Feel: *al8* (appearing at the top and bottom of the page).
- Dynamic markings: *mp*, *mf*, *ff*.
- Performance instructions: *cluster*, *uten swell*, *med høyre vridtrumm*, *arco*, *gliss*.

Handwritten musical score for a band, featuring the following parts and annotations:

- Trumpet (Ten Sax):** Top staff with notes and dynamics like *ff*. Includes a circled measure number **25**.
- Trumpet (Cb):** Second staff with notes and dynamics like *ff* and *sol D*.
- Drum Set (Sax):** Third staff with notes for *TomT*, *Tombs*, and *Cymb*. Includes a circled measure number **30**.
- Drum Set (Batt):** Fourth staff with notes and dynamics like *ff*.
- Oboe (Obg):** Fifth staff with notes and dynamics like *mp* and *sempre*.
- Drum Set (Dr. b.):** Sixth staff with a drum pattern and notes *1 2 3 4 5 6 7 8 9*.
- Guitar (Git):** Seventh staff with notes, dynamics like *ff*, and the instruction *ad lib*.
- Trumpet (Cb):** Bottom staff with notes and dynamics like *ff* and *Pizz*.

Additional markings include a large watermark "NB" and "This music is copyright protected" across the center of the page, and a bracketed measure range **6 5'** at the bottom right.

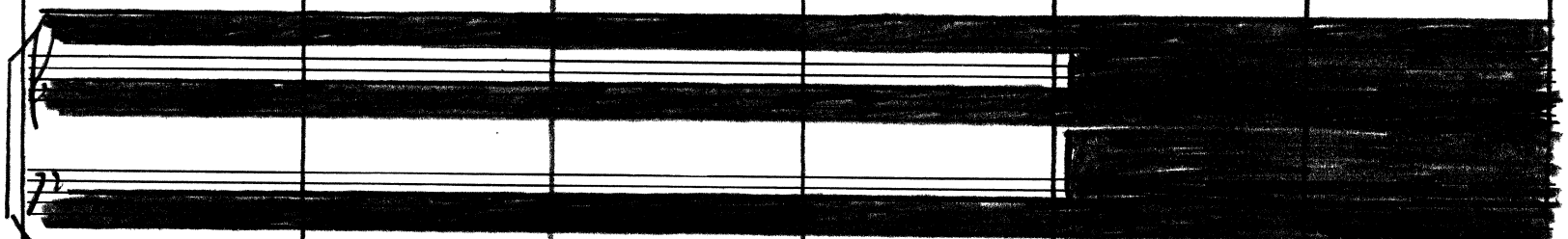
(35)

TS

gliss

Cymb 7/8

TAM-TAM ff



sample
Drb

7 2 3 4 5 6 7 8 9

Git

Ab med ff

ad lib

Cb

ff arco

improv ad lib

TS

ad lib

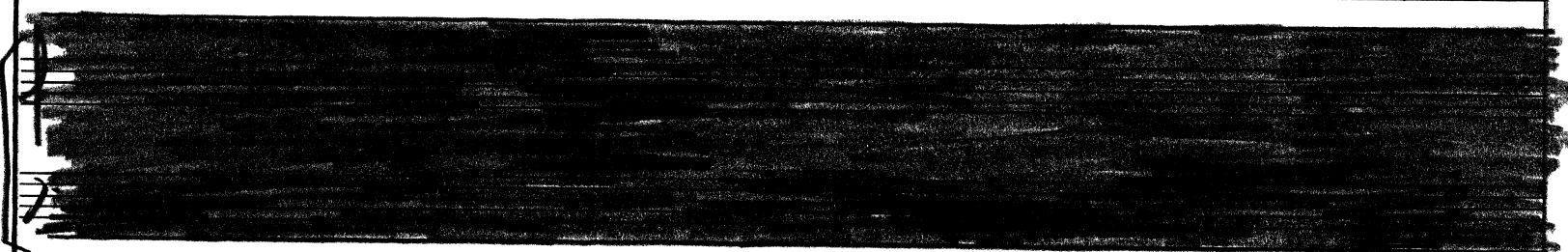
ppp dim

TAM-TAM

ff

La Klinge

Start
band



ppp cresc
med swell of Drum bars

Git

(±) ad lib

ppp dim

Cb

simile

15" - 20"

-5- Start

(40)

ca 20"

Bänd

1 *mp* (5ml) *ff*

2 *mp* *al fine* (går uten stopp)

ad lib

Org

Dr. b

9 8 7 6 5 4 3 2 1

inn

Pizz

Cb

mp *simile*

(45)

Bänd

Stikkord

By nu følger Apem prest
 Programledere er Kjell G. Wiig
 og Per Øyvind
 Høndstveit

Tilbakekobl.

Tom Sax

mt *mt*

Batt

simile *mp cresc*

mp cresc

Org

Git

mp cresc

Cb

mp cresc

ca 10"

50

stop

Band 1

Band 2 *portretter al time pp sample*

T.S.

Batt *parre vels sira pona*

org *mit* *Fill in dol lib*

Git

cb

55

Sax

Batt *Siamite*

org *G7* *Cm* *Ebm*

Git

cb

Handwritten musical score for measures 60-64. The score includes staves for Tuba (Tuba), Organ (Org), Guitar (Guitar), and Bass (Bass). Measure 60 is circled. The organ part shows chords F7 and Bb. The guitar and bass parts feature complex rhythmic patterns with slurs and accents.

Handwritten musical score for measures 65-70. The score includes staves for Tuba (Tuba), Organ (Org), Guitar (Guitar), and Bass (Bass). Measure 65 and measure 70 are circled. The organ part shows chords Am7, Ab7, and Gm. The guitar and bass parts continue with complex rhythmic patterns. A large watermark 'NB noter' and 'This music is copyright protected' is overlaid on the score.

Handwritten musical score for the first system, measures 75-80. The score includes staves for Organ (org), Guitar (Gtr), and Bass (Cb). Measure 75 is circled. The Organ part features chords: Bb, Bbm, C7, Cm, and F7. The Guitar part has melodic lines with slurs and accents. The Bass part has a rhythmic pattern with slurs.

Handwritten musical score for the second system, measures 80-84. Measure 80 is circled. The score includes staves for Trumpet/Saxophone (T.S.), Bass (Bass), Organ (org), Guitar (Gtr), and Bass (Cb). Measure 80 is circled. The Organ part features chords: Bb, Bbm, C7, Cm, and F7. The Guitar part has melodic lines with slurs and accents. The Bass part has a rhythmic pattern with slurs. The T.S. part has melodic lines with slurs and accents. The Bass staff has a rhythmic pattern with slurs. The text "Bass 17 Kull 2" is written above the T.S. staff. The text "jazz vels sempre" is written above the Bass staff. The text "simile" is written below the Cb staff.

85

Handwritten musical score for measures 85-87. The score is arranged in a grand staff with five staves labeled: Bånd, Tenor sax, Bass, Org, and Git. The lyrics are: "Et De redd Nielsen" and "Tilbage kobt".

Bånd: Et De redd Nielsen | Tilbage kobt

Tenor sax: melodic line with notes and slurs.

Bass: jazz waltz sample

Org: accompaniment with notes and slurs.

Git: accompaniment with notes and slurs.

CB: accompaniment with notes and slurs.



90

(4)

Handwritten musical score for measures 90-94. The score is arranged in a grand staff with five staves labeled: Bånd, T.S., Bass, Org, and Git. The lyrics are: "Fillim ad lib".

Bånd: (Empty staff)

T.S.: melodic line with notes and slurs.

Bass: jazz waltz sample

Org: accompaniment with notes and slurs. Includes "Fillim ad lib" and "Eb".

Git: accompaniment with notes and slurs.

CB: accompaniment with notes and slurs.

Staff ends with "stop".

95

Handwritten musical score for measures 95-100. The score includes staves for T.S., Bass, Org, Gil, and Cb.

T.S.: Melodic line with slurs and accents.

Bass: A long horizontal line with the word "simile" written above it, indicating a similar pattern to the previous section.

Org: Organ accompaniment with chords: Ebm, Ebm, Dm 7-5, G7.

Gil: Melodic line with slurs and accents.

Cb: Bass line with slurs and accents.

Handwritten musical score for measures 100-103. The score includes staves for Bass, Org, Gil, and Cb.

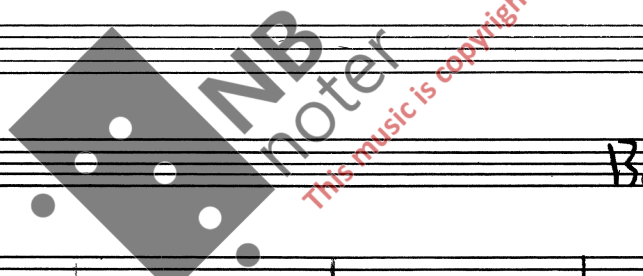
Tempo/Style: *Andante* (written above the first staff).

Section Markers: "Band 1 K. #3" is written above the first staff. A large downward-pointing arrow is on the right side of the first staff.

Measures 100-101: Melodic lines for Bass, Org, Gil, and Cb.

Measures 102-103: A boxed section containing musical notation for Bass, Org, Gil, and Cb. The word "simile" is written above the Bass staff and below the Cb staff.

Org: Organ accompaniment with chords: Ebm, Ebm, Trm. b11.



105

Band

Stikkord

Tikke mer om
Arne Nordheim må

Tilbakerobt

Ten sax

Batt

vals & corged

simile

org

Git

Cb

simile

cresc

cresc

cresc

Band

110

T. S

Batt

org

Fill in ad Lib

Bb

G

Cm

Ebm

Git

Cb

115

stop

ca 5"

Trumpet (T.S.)

Bass (Batt)

Organ (org)

Guitar (Git)

Contra Bass (Cb)

simile

Cymb.

Sn. dr.

improv. ad lib ca 4 $\frac{3}{4}$ takter

Am 7-5

dim

improv.

ca 12 $\frac{3}{4}$ takter

alleg

improv. ad lib ca 8 $\frac{3}{4}$ takter

Am 7-5

improv. ca 6 + 2 tempo ad lib

simile

dim

120

ca 5"

ca 5"

Bass 1 Kutt 4

Trumpet (T.S.)

Sn. dr.

Organ (org)

Guitar (Git)

Contra Bass (Cb)

simile

mp

mp

mp

mp

Handwritten musical score for the first system, featuring five staves:

- Bänd:** Labeled "Stückend" and "Take or not to be". A box contains the text "Take or not to be".
- Sn dr:** Labeled "sn dr". Includes a long slur and the text "ff sempre".
- cb:** Labeled "cb". Includes the text "simile".
- Tr kbb:** Labeled "Tr kbb".
- Empty staff:** A fifth staff is present but contains no notation.

Handwritten musical score for the second system, featuring six staves:

- 125:** A circled number "125" is written at the beginning.
- Bänd:** Labeled "Bänd". Includes the text "stop" and "improv ad lib ca 4 $\frac{3}{4}$ takter".
- T-S:** Labeled "T-S". Includes the text "Cymb" and "Sn dr".
- Batt:** Labeled "Batt". Includes the text "dim".
- org:** Labeled "org". Includes the text "Fill inn", "Gm", and "improv ad lib ca 12 $\frac{3}{4}$ takter".
- bid:** Labeled "bid". Includes the text "improv ad lib ca 8 $\frac{3}{4}$ takter".
- cb:** Labeled "cb". Includes the text "improv" and "tempo ad lib".

(130) 6a 5^u a 5^u Bänd 1 Kutt 5

T.S.

Sn. dr.

Org.

Git.

Cb

(135)

Bänd

Stikk ord	Euhvii sovak Skal respektteres	T. kahl
-----------	-----------------------------------	---------

Sn. dr.

Cb

simile

ca 7"

T.S. *improv*

Batt *Cymb* *improv ad lib*

org *improv.*

Git *improv*

CB *improv ad lib*

Chords: Cm, F7, Bb7, E7

Drum notation: x x x x x x x

CB notation: b o b o b o b o b o b o

ca 7"

ca 7"

Batt *Solo* *improv sempre*

org

Git

CB

Watermark: INB notator This music is copyright protected

Circle: 140

C.b-solo ca. 1'30"

A *Lento*

solo
C b

improv ad lib

C b

improv sempre Ritard.

Bänd 1

Kutt 7

selve popidobet
Blandingen av fiols
og balle

Stikkord

Tenn sax

attaca

B *Tenn sax-solo ca. 1'30"*

solo
Tenn sax

improv ad lib

T.S.

improv sempre Ritard.

Bänd 1

Kutt 8

To be or
not to be

Stikkord

Gitt

C

Git-solo ca 1'30"

Git *molto vibrato* *solo* *diss.* *improv ad lib*

Git *improv sempre* *Ritard*

Band 1 *Kott 9* *En Syritas...* *Til hulekobl*
En Syritas oppgav

Orgel

D

Band 1 *Ca 30"*

Org *mit* *improv ad lib*

Band *Ca 30"* *Tones ut*

Org *improv sempre*



-19- **E**

ca 15"

org *improv sempre*

Cb *Start improv*

F ca 15"

Batt *Start improv p p a p cresc*

org *improv sempre*

Cb *improv sempre*

G ca 15"

Batt *improv sempre*

org *improv sempre*

Git *Start improv p p a p cresc*

Cb *improv sempre*

H ca 15"
molto cresc. Tutti

Ten sax *Start improv p p a p cresc*

Batt *improv sempre*

org *improv sempre*

Git *improv sempre*

Cb *improv sempre*

Bånd 1

Kutt 10

Amalie - Eden

Wig

Stikkord

Mkke mer om
Arne Nordheim
m

Bånd

Amalie + Soll

ca 15"

Ork

Tutti

Bånd

Elizabeth

Schuldgalig er jeg
enig
men ikke my
musikk

Soll
ff

ca 3"

Ork

Tutti

Stanche

Mannen vår kultur
en kol det
Smaks fordrer

Soll
ff

ca 3"

Bånd

Heradstret

at De har vitsh-
pelig bevis for at dette
er sant

Soll
ff

ca 3"

Ork

Tutti

Benditosen

Det finnes en del
pretestviste
som også er
morgens

Soll
ff

ca 3"

N

Eidem

Wig

amalie

Bånd

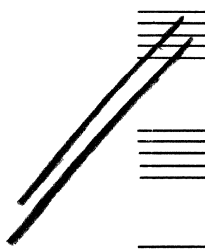
en herre utpå
Hvikkedden
blotter stampen sin

Er De redd
Nielsen?

Direkte fœrsimplende
direkte forblende
Tilbakekobl

Ork
tutti

Handwritten musical notation for the orchestra, featuring a dense texture of notes and a dynamic marking of *mf*. A bracket above the staff is labeled *ca 10"*.



Bånd

Sørl

Kryss fader med sløyte

Ork
tutti

Handwritten musical notation for the orchestra, featuring a dense texture of notes and a dynamic marking of *ff*. A bracket above the staff is labeled *ca 10"*, and the word *rit* is written above the staff.



O

Bånd

Sløyte

Kryss fader med musikk (sang + trommespill)

Ork
tutti

Handwritten musical notation for the orchestra, featuring a sparse texture of notes. The text *Start (Kuhis med) på instrumentene* is written above the staff, and *ad lib* and *Korte traser* are also present. A dynamic marking of *mf* is written below the staff.

3/4

16 takter 40 takter

Sang
Bånd Tr. sp.

Rom - an - tilk og nyt - me

ork
slutt av gradvis

16 takter 16 takter 8 takter

Bånd

Trækkspill
sløyte

ork
Tutti

"Whisper"

mf

3/4

Rom - man - tilk og nyt - me

Bånd

Sord

Træsak

Batt

org

Git

Cb

mf
Tutti ork.

R

Handwritten musical score for the first system (labeled 'R'). It includes staves for:

- Sung Band:** Melodic line with notes and rests.
- Soul:** A staff with a long horizontal line and the instruction "cresc sample".
- Ten Sax:** Melodic line with notes and rests.
- Bath:** A staff with a long horizontal line and the instruction "improv sample".
- Org:** Chordal accompaniment with notes and rests.
- Gtr:** Chordal accompaniment with notes and rests, including the instruction "cresc".

S

Handwritten musical score for the second system (labeled 'S'). It includes staves for:

- Sung Band:** Melodic line with notes and rests.
- Soul:** A staff with a long horizontal line and the instruction "ff".
- Ten sax:** Melodic line with notes and rests.
- Sung S:** Melodic line with notes and rests.
- Bath:** A staff with a long horizontal line and the instruction "improv", and a section labeled "Cymb" and "Beat." with rhythmic notation.
- Sung S:** Melodic line with notes and rests.
- Org:** Chordal accompaniment with notes and rests, including chord symbols like Bb7, Eb, H9, A9, H9, Eb, and Fdim.
- Gtr:** Chordal accompaniment with notes and rests.
- Sung S:** Melodic line with notes and rests.
- Cb:** Bass line with notes and rests.

Tutti Rit - - - - - *molto* - - - - - *medium* beat-Tempo
 cresc - - - - -

ff al fine

T

Band

Handwritten musical score for a band. The score is organized into two systems, each with multiple staves for different instruments and voices.

System 1:

- T.S. (Trumpet/Saxophone):** Top staff with notes and rests.
- Sang (Singer):** Staff with lyrics and notes.
- Batt (Bass):** Staff with the instruction "Batt sempre" and a long arrow.
- Sung (Saxophone):** Staff with notes.
- Org (Organ):** Staff with chords: Fm , $H97$, E , $A67$.
- Sang (Singer):** Staff with lyrics and notes.
- Git (Guitar):** Staff with notes and rests.
- Sung (Saxophone):** Staff with notes.
- Cb (Cello/Double Bass):** Staff with notes.

System 2:

- T.S. (Trumpet/Saxophone):** Top staff with notes and rests.
- Sang (Singer):** Staff with lyrics and notes.
- Batt (Bass):** Staff with the instruction "simile" and a long arrow.
- Sung (Saxophone):** Staff with notes.
- Org (Organ):** Staff with chords: Dm , $G67$, $G6m$, $H7$.
- Sang (Singer):** Staff with lyrics and notes.
- Git (Guitar):** Staff with notes and rests.
- Sung (Saxophone):** Staff with notes.
- Cb (Cello/Double Bass):** Staff with notes.

A large watermark "MP3 noter" is visible across the center of the page, along with the text "this music is copyright protected".

V

Handwritten musical score for guitar and voice. The score is organized into two systems, each with a double bar line at the beginning. The first system includes staves for T.S., Sing, Bass, Sing, Org, Sing, Git, and Cb. The second system includes staves for T.S., Sing, Bass, Sing, Org, Sing, Git, and Cb. The guitar part (Org) features various chords such as Fm, Ab7, F7m, Db7, Gm, Em, D7, and Gm. The bass part (Bass) is marked "simile (beat)". The vocal parts (Sing) contain melodic lines with lyrics. The guitar part (Git) shows fretting and picking patterns. The Cb part (Cb) shows a bass line. The T.S. part (T.S.) shows a melodic line with lyrics. The score is marked with a copyright notice: "This music is copyright protected".

Handwritten musical score for guitar and voice. The score is organized into two systems, each with a double bar line at the beginning. The first system includes staves for T.S., Sing, Bass, Sing, Org, Sing, Git, and Cb. The second system includes staves for T.S., Sing, Bass, Sing, Org, Sing, Git, and Cb. The guitar part (Org) features various chords such as Fm, Ab7, F7m, Db7, Gm, Em, D7, and Gm. The bass part (Bass) is marked "simile (beat)". The vocal parts (Sing) contain melodic lines with lyrics. The guitar part (Git) shows fretting and picking patterns. The Cb part (Cb) shows a bass line. The T.S. part (T.S.) shows a melodic line with lyrics. The score is marked with a copyright notice: "This music is copyright protected".

X

Rit - - - - - molto - - - - - Lento

Band 7
Kutt 11

En hekke
vtpa' Hpvik-
odden som
blotter stumper
sin

Handwritten musical score for the first system, featuring multiple staves for different instruments and vocal parts. The score includes various musical notations such as notes, rests, and dynamic markings. A large watermark 'NB Boter' is visible across the center of the page.

Staffs:

- T. S.:** Tenor Saxophone
- Sung:** Vocal parts (multiple staves)
- Batt:** Bass Drum
- Org:** Organ
- Git:** Guitar
- C. b.:** Contrabass

Annotations:

- Drum Notations:** TomT, Cym, Trem.
- Organ Chords:** Em, G67, Gbm, H7, C9
- Dynamic Markings:** q. liss, q. liss x, H7, H7 x
- Tempo/Performance:** Rit, molto, Lento

Attaca

Band 7
Kutt 12

To be
or not
to be

Band 13
Kutt 13

Da er
vi ankommet

attaca

Handwritten musical score for the second system, continuing the piece. It features similar instrumentation to the first system, with detailed musical notation and performance instructions.

Staffs:

- Ten Sax:** Tenor Saxophone
- Batt:** Bass Drum
- Org:** Organ
- Git:** Guitar
- (b):** Contrabass

Annotations:

- Drum Notations:** cymb, TAMT, TomT
- Organ Chords:** F, Bb
- Dynamic Markings:** F, ff, End Lib
- Tempo/Performance:** ff tutti

ff Tutti
Sempul

ff tutti