

Bjarne Isaksen

Terra Incognita

for

klaver

{1996}

Explanations
to
“Terra Incognita”



The *gracenotes* are supposed to be executed as fast as possible and at the latest possible in the measure.



Chromatic cluster



Chromatic cluster *marked with top and bottom note*



Damp the string with finger while playing

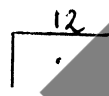
Fermatas



Short



Medium



Long (Marked with seconds)

Pedals

Ped.

Right pedal

Una Corda / u.c.

Left pedal

Ped III

Middle pedal

Durata: ca. 10 min.

TERRA INCOGNITA

Bjarne Isaksen

$\text{♩} = 40$

8va Pesante e misterioso

8va
PPP
poco a poco cresc.
8va bassa
Ped. →

8va
ff
ff
ff
(f)
(ff)
(Ped. sempre)

ff sempre
poco a poco decresc.
(Ped. sempre)

Handwritten musical score system 1. It consists of four staves. The top staff is a treble clef with a key signature of one flat (B-flat) and a common time signature. It contains a melodic line with slurs and accents. The second staff is a treble clef with a key signature of one flat, containing a chordal accompaniment. The third staff is a bass clef with a key signature of one flat, containing a chordal accompaniment. The bottom staff is a bass clef with a key signature of one flat, containing a bass line with slurs and accents. The instruction "(Ped. sempre)" is written below the first staff.

Handwritten musical score system 2. It consists of four staves. The top staff is a treble clef with a key signature of one flat and a common time signature. It contains a melodic line with slurs and accents. The second staff is a treble clef with a key signature of one flat, containing a chordal accompaniment. The third staff is a bass clef with a key signature of one flat, containing a chordal accompaniment. The bottom staff is a bass clef with a key signature of one flat, containing a bass line with slurs and accents. The instruction "(Ped. sempre)" is written below the first staff. A large watermark "NB noter" and "This music is copyright protected" is overlaid on the system.

Handwritten musical score system 3. It consists of four staves. The top staff is a treble clef with a key signature of one flat and a common time signature. It contains a melodic line with slurs and accents. The second staff is a treble clef with a key signature of one flat, containing a chordal accompaniment. The third staff is a bass clef with a key signature of one flat, containing a chordal accompaniment. The bottom staff is a bass clef with a key signature of one flat, containing a bass line with slurs and accents. The instruction "(Ped. sempre)" is written below the first staff. The instruction "ff" is written above the second staff, and "pp" is written below the third staff.

(Ped. sempre)

tre corde

cresc. & accel.

fz

una corda

PP

(Ped. sempre)

(Ped. sempre)

tre corde

15va

una corda

8va

12"

(Ped. fz sempre)

(Ped sempre)



loco tre corde

15va

12"

ff

(Ped. sempre)

una corda

pp

(Ped. sempre)

tre corde

mf

(Ped. sempre)



decr.

mf

(Ped.)

Depress silently and secure with P III

8va

accel.

f

(Ped. III sempre)

$\text{♩} = 80-100$
Agitato

Musical score system 1, first system. It consists of four staves. The top two staves are in treble clef, and the bottom two are in bass clef. The music features a complex rhythmic pattern with many sixteenth notes. Dynamics include *mf* and *f*. A box labeled "Senza Ped. III" is present, with an arrow pointing to the pedal instruction "Ped. →".

Musical score system 2, second system. It consists of four staves. The music continues with similar rhythmic complexity. Dynamics include *f* and *ff*. A box labeled "Senza Ped. III" is present, with an arrow pointing to the pedal instruction "Ped. →". A marking "8va" with an arrow indicates an octave shift. The system ends with a double bar line and a fermata.

Musical score system 3, third system. It consists of four staves. The top two staves are mostly empty, with a few notes at the beginning. The bottom two staves are also mostly empty. A large "20''" marking is written across the staves. The system ends with a double bar line and a fermata. Below the staves, there is a chord diagram for a piano: $\text{C} \# \text{E} \text{G} \text{A}$ with the instruction "pp 8va bassa".

8va sempre

8va (Ped. sempre)

This system contains two staves. The upper staff is a piano with a tremolo effect (marked with a double Z and a vertical line) and a forte dynamic (f). The lower staff is an 8va piano with a tremolo effect (marked with a double Z and a vertical line) and a forte dynamic (f). The music is in a 4/4 time signature and features complex rhythmic patterns.

8va

(Ped. sempre)

This system contains two staves. The upper staff is a piano with a tremolo effect (marked with a double Z and a vertical line) and a forte dynamic (f). The lower staff is an 8va piano with a tremolo effect (marked with a double Z and a vertical line) and a forte dynamic (f). The music is in a 4/4 time signature and features complex rhythmic patterns.

8va

(Ped. sempre)

This system contains two staves. The upper staff is a piano with a tremolo effect (marked with a double Z and a vertical line) and a forte dynamic (f). The lower staff is an 8va piano with a tremolo effect (marked with a double Z and a vertical line) and a forte dynamic (f). The music is in a 4/4 time signature and features complex rhythmic patterns.

6

legato
♩ = 76

♩ = 40

mp molto rubato

ff e pesante

8va bs.
Reed.

8va

8va f

8va
(Reed. sempre)

8va f

8va f

8va bassa
(Reed. sempre)

*) Non legato e non rubato

Handwritten musical score system 1. It consists of three staves. The top staff is a treble clef with a key signature of one sharp (F#) and a common time signature. It contains a melodic line with eighth notes and rests. The middle staff is a bass clef with a key signature of one sharp (F#) and a common time signature, featuring a bass line with eighth notes and rests. The bottom staff is a bass clef with a key signature of one sharp (F#) and a common time signature, containing a bass line with eighth notes and rests. There are several triplets marked with a '3' below the notes. A dynamic marking 'mp' is present. There are two boxed chord diagrams: one at the beginning and one at the end of the system. The first chord diagram is labeled '8va' and the second is labeled '(Red. s.)'.

Handwritten musical score system 2. It consists of three staves. The top staff is a treble clef with a key signature of one sharp (F#) and a common time signature. It contains a melodic line with eighth notes and rests. The middle staff is a bass clef with a key signature of one sharp (F#) and a common time signature, featuring a bass line with eighth notes and rests. The bottom staff is a bass clef with a key signature of one sharp (F#) and a common time signature, containing a bass line with eighth notes and rests. There are several triplets marked with a '3' below the notes. A dynamic marking 'mp' is present. There are two boxed chord diagrams: one at the beginning and one at the end of the system. The first chord diagram is labeled '8va' and the second is labeled '(Red. s.)'.

Handwritten musical score system 3. It consists of three staves. The top staff is a treble clef with a key signature of one sharp (F#) and a common time signature. It contains a melodic line with eighth notes and rests. The middle staff is a bass clef with a key signature of one sharp (F#) and a common time signature, featuring a bass line with eighth notes and rests. The bottom staff is a bass clef with a key signature of one sharp (F#) and a common time signature, containing a bass line with eighth notes and rests. There are several triplets marked with a '3' below the notes. A dynamic marking 'mp' is present. There are three boxed chord diagrams: one at the beginning and two at the end of the system. The first chord diagram is labeled '8va' and the others are labeled '(Red. sempre)'.

Handwritten musical score for three systems. Each system consists of three staves (treble, bass, and a lower bass staff).

System 1:
 - Top staff: *8va* (written above the staff), *Sempre* (written above the staff).
 - Middle staff: *molto accelerando* and *e cresc.* (written above the staff).
 - Bottom staff: *8va bs.* and *(Ped. sempre)* (written below the staff).
 - Includes triplets and accents (>).

System 2:
 - Top staff: *8va* (written above the staff), *l.v.* (written above the staff).
 - Middle staff: *8* (written above a large bracketed section), *fff* (written below the staff).
 - Bottom staff: *8va bs.* and *(Ped. sempre)* (written below the staff).
 - Includes triplets, accents (>), and a large bracketed section.

System 3:
 - Top staff: *8va* (written above the staff).
 - Bottom staff: *8va bs.* and *(Ped. sempre)* (written below the staff).
 - Includes triplets and accents (>).

8va

l.v.

16"

8va

(Ped. sempre)

Adagio molto quasi reminiscenza

8va

PPP

una corda

8va bassa

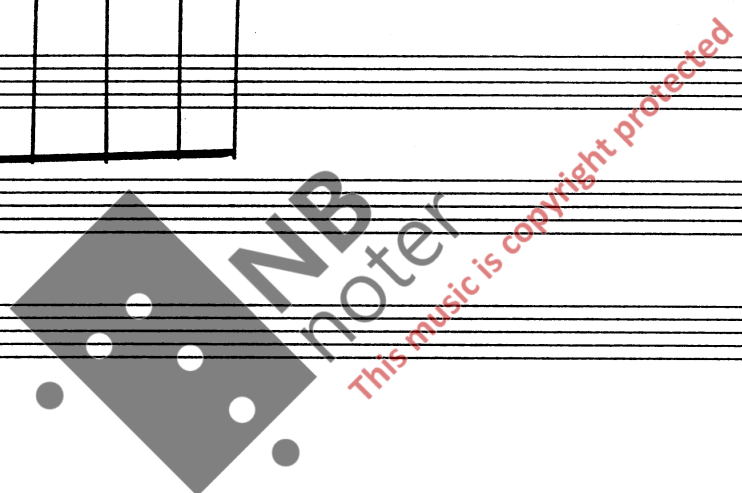
PPP

8va

be l.v. al niente

8va bassa

(Ped. sempre)



Tromso
7/dec. 1996

Bjorn Isaksen