

Bestillingen er fra Olaf Broch  
og Solveig Refvik, med støtte fra  
Det Norske Komponistfond

Eilert M. Haglund:

Sonatine for viola og klaver  
— op. 34.

Komponert 1993.



This music is copyright protected



Bestillingsverk fra Olaf Borch  
og Selvig Reprik.  
Med støtte fra Det Norske Komponistforb.

# Sonatine for viola og klaver

1. Oppsøng.

Eilert M. Haugland 1993

$\text{♩} = 69$   
Moderato misterioso

viola

klaver

*mf*

*poco f*

*poco f*

*f*

*f*

10

*mf*

*mf*

S. 2)

Sonatine for viola & klavier

E.M.H.

poco f

20

Cantabile  
poco meno mosso

poco rit... p

s. 3)

Sonata for viola & klaver

E.M.A.

Handwritten musical score for the first system, measures 1-4. It features a treble clef staff with a 3/4 time signature and a key signature of one flat. The bass clef staff contains a complex accompaniment with many accidentals. There are slurs and dynamic markings in the piano part.

Handwritten musical score for the second system, measures 5-8. Measure 7 is boxed with the number "30". The piano part includes a "mp" dynamic marking and a slur. A red watermark is visible across the system.

Handwritten musical score for the third system, measures 9-12. The piano part includes a "p" dynamic marking and a slur. A red watermark is visible across the system.

Handwritten musical score for the fourth system, measures 13-16. The piano part includes a slur and a dynamic marking.

S. 4)

Sonata for viola and piano

Em4

mf ————— piu f mp

mf ————— piu f mp

40

poco a poco accelerando



cresc.

a tempo I

poco f

poco f

Sonatina for viola and keyboard

5/

E.M.H.

50

*f*

*f*

*p*

*p*

*mp* *mf*

*mp*

*allargando* 60 *a tempo I*

*allargando* *a tempo I* *mf*

9.

Sonatina for viola & keyboard

EmH.



7.

# Sonatina for viola or clarinet

6/8 MH

8)

# Sonatine for viola og klaver

EMH

*andantino*

2. Rundsong

EMH 93.

10

9)

# Sonatina for viola & klavier

Emmf.

Handwritten musical score for Viola and Piano. The score is divided into four systems. The first system (measures 1-4) is in 3/4 time, key of D major, starting with a piano (p) dynamic. The second system (measures 5-8) is in 3/4 time, key of D major, with dynamics mf and leggiero. The third system (measures 9-12) starts at measure 20, in 3/4 time, key of D major. The fourth system (measures 13-16) is in 3/4 time, key of D major. The score includes various musical notations such as notes, rests, slurs, and dynamic markings.

10/

# Sonatine for viola & klavier

EMH.

*poco stulto*

Handwritten musical score for the first system. It consists of a treble clef staff and a bass clef staff. The treble clef staff begins with a treble clef, a key signature of one sharp (F#), and a 3/4 time signature. The music features a series of chords and melodic lines in both hands, with some notes marked with accents and slurs.

Handwritten musical score for the second system. It begins with a box containing the number "30". The tempo marking "Admato" is written above the staff. The music continues with complex chordal textures and melodic fragments in both hands.

Handwritten musical score for the third system. The music continues with intricate chordal patterns and melodic lines. A large watermark "NB Proter" is visible across the middle of the page, along with the text "This music is copyright protected".

Handwritten musical score for the fourth system. The music concludes with a series of chords and melodic lines. A trill or triplet-like figure is marked with a "3" above it in the treble clef staff.

11)

Sonatina for Viola or Clarinet

Emil.

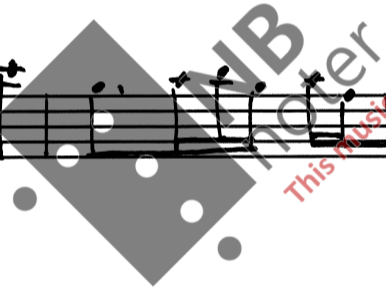
40

*poco stulto*

*a tempo I (andantino)*

*mp*

50



This music is copyright protected

12)

Sonatine for viola & klaver

♩ ml.

13/.

Sonatine for viola and piano

Emx.

70

ten.

piu mosso

Con arco

f

80

stretto

stretto

14)

*poco agitato*

*poco rit....*

*finito Amli/Tyresdal 21/10-93.*

*Durata 3.45.*