

Partitur

Eilert M. Høgeland :

Sonata nr. 1 for
violin og orgel

1. Andante espressivo
2. Allegretto
3. Poco animato ma non troppo

(1996) op. 43.

Med støtte fra
Komponistenes Vederlags-
fond.



Bestillingsverk med støtte
fra Komponistenes Vederlagsfond.

Sonata nr. 1 for violin og orgel

Eilert M. Hagland 96.

1. andante espressivo (30)

violin

orgel

mp

p

Ped.

Cresc.

mf

mp

p

f

mf

(40)

Sonata s. 2. / 6 m. l.

Handwritten musical score for the first system, featuring a treble clef staff with notes and rests, and a grand staff (treble and bass clefs) with chords and bass lines. Annotations include a checkmark, '1-1', and 'be.'.

Handwritten musical score for the second system, including treble and grand staves. Annotations include '3', 'be', a circled '20', and '1'.

Handwritten musical score for the third system, including treble and grand staves. Annotations include '(50)', '4', 'mp', and '3-1'.

Handwritten musical score for the fourth system, including treble and grand staves. Annotations include '3 2', '1. m. l.', and 'Sempre dim.'.

Sonata s. 3 / 6mX.

Handwritten musical score for Sonata s. 3 / 6mX. The score consists of six systems of staves. The first system has a treble clef staff with notes and rests, and a grand staff (treble and bass clefs) below it. The second system continues the grand staff. The third system has a treble clef staff with notes and rests, and a grand staff below it. The fourth system continues the grand staff. The fifth system has a treble clef staff with notes and rests, and a grand staff below it. The sixth system continues the grand staff. The score includes various musical notations such as notes, rests, beams, slurs, and dynamic markings like 'p' and '60'. There are also handwritten annotations like 'sul A' and 'sempre ped.'. A large watermark 'NMBwater' is visible across the middle of the page.

(sempre ped.)

Sul A

Sonata s. 4 / 8ml.

Handwritten musical score for Sonata s. 4, 8 measures. The score is written on six systems of staves. The first system includes a treble clef staff with a melodic line and a grand staff (treble and bass clefs) with accompaniment. The second system continues the melodic line with a box around measure 70 and includes a 'sim.' (sostenuto) marking. The third system shows the grand staff with a 'p' (piano) dynamic marking. The fourth system continues the grand staff with a 'p' marking. The fifth system shows the grand staff with a 'p' marking. The sixth system includes a box around measure 80 and a 'f' (forte) dynamic marking. The score contains various musical notations such as notes, rests, slurs, and dynamic markings.

Sonata s. 5 / 8ml.

Sul A

1 1 be.

2

17

Handwritten musical notation on a single staff, featuring various note values, accidentals, and slurs.

Handwritten musical notation for a piano accompaniment, consisting of two staves with chords and melodic lines.

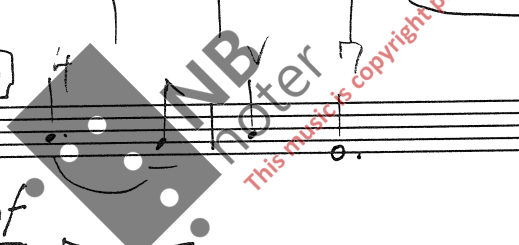
Handwritten musical notation on a single staff, including a 'Sim.' marking and various rhythmic notations.

Handwritten musical notation for a piano accompaniment, showing a change in dynamics to 'mf' and various chordal structures.

Handwritten musical notation on a single staff, featuring a circled number '90' and a 'mf' dynamic marking.

Handwritten musical notation for a piano accompaniment, concluding with a double bar line and dynamic markings.

Sonata 4.45.



Sonata s. 6 - Emd.

2. Allegretto

Handwritten musical score for the first system, measures 1-4. The system includes a treble clef staff (labeled 'vl.'), a grand staff (labeled 'org.'), and a piano (p) dynamic marking. The key signature has one sharp (F#) and the time signature is 4/4. The treble staff contains a melodic line with eighth and sixteenth notes. The grand staff provides harmonic accompaniment with chords and moving lines in both hands.

Ped.

Handwritten musical score for the second system, measures 5-8. This system continues the melodic and harmonic development. It includes a treble clef staff and a grand staff. The piano (p) dynamic is maintained. The notation shows various rhythmic patterns and chordal textures.

Handwritten musical score for the third system, measures 9-12. This system features more complex rhythmic figures, including triplets and sixteenth-note runs. It includes a treble clef staff and a grand staff. A large watermark 'NMB' is visible over the middle of this system.

Handwritten musical score for the fourth system, measures 13-16. This system concludes the piece with a final melodic flourish and harmonic resolution. It includes a treble clef staff and a grand staff. A box containing the number '101' is written at the beginning of the system.

Sonata s.7. 6M.

Handwritten musical score for the first system. It consists of a treble clef staff and a grand staff (treble and bass clefs). The treble staff begins with a first ending bracket labeled '1' and a '4' above it. The music features various notes, rests, and accidentals. The grand staff continues with similar notation. A 'P-d.' marking is present below the grand staff, and a 'mp' dynamic marking is at the end of the system.

Handwritten musical score for the second system. It starts with the instruction 'Solo meno mosso'. The system includes a treble clef staff and a grand staff. The treble staff has a 'Solo, m(I)' marking and a 'm' dynamic. The grand staff has a '(II) mp' marking. A 'J(Solo)' marking is also present. A large watermark 'NB noter' is overlaid on the system.

Handwritten musical score for the third system. It begins with a boxed number '20' in the treble clef staff. The system includes a treble clef staff and a grand staff. A 'Solo' marking is present in the treble staff, with a 'mf' dynamic below it. A large watermark 'NB noter' is overlaid on the system.

Handwritten musical score for the fourth system. It includes a treble clef staff and a grand staff. The treble staff has a 'mf(I)' marking and a 'm' dynamic. The grand staff has a 'm' dynamic. The system concludes with a '3 2 1-1-3' marking above the treble staff.

Sonata s. 8. *mf.*

30

Handwritten musical score for the first system. The top staff contains a melodic line with two slurs labeled '1' and '2'. The bottom staff is a piano accompaniment with a *mp* dynamic marking and a '(II)' annotation. A *mf* *Pod.* marking is present at the end of the system.

Handwritten musical score for the second system. The top staff is marked 'Sul A' and 'V1'. The bottom staff has a *mf* dynamic marking and a 'rit....' marking. A large watermark 'NMB poster' is visible across the system.

Handwritten musical score for the third system. The top staff has a *mf* dynamic marking. The bottom staff has a *f* (II) dynamic marking and a *man.* marking. A large watermark 'NMB poster' is visible across the system.

Handwritten musical score for the fourth system. The top staff is marked 'Sul G' and '1 1'. The bottom staff has a *mf* dynamic marking. A large watermark 'NMB poster' is visible across the system.

Sonata s. 9 - EMM.

40

Handwritten musical notation for the first system, including treble and bass staves with notes, rests, and dynamic markings.

And.

Handwritten musical notation for the second system, including treble and bass staves with notes, rests, and dynamic markings.

Handwritten musical notation for the third system, including treble and bass staves with notes, rests, and dynamic markings.

50

Handwritten musical notation for the fourth system, including treble and bass staves with notes, rests, and dynamic markings.

Duration 3.00.

R.A.

Sonata s. 10 - Emd.

Sul D
3. Poco animato ma non troppo

Handwritten musical notation for the first system. The treble clef staff contains a melodic line with slurs, accents, and dynamic markings *mp* and *pp*. Fingering numbers 1-4 and breath marks (V) are present. The piano accompaniment is shown in the grand staff below.

Handwritten musical notation for the second system. The treble clef staff continues the melodic line with slurs, accents, and dynamic markings *mp* and *p*. Fingering numbers 1-4 and breath marks (V) are present. The piano accompaniment is shown in the grand staff below.

Handwritten musical notation for the third system. The treble clef staff continues the melodic line with slurs, accents, and dynamic markings *p*. Fingering numbers 1-4 and breath marks (V) are present. The piano accompaniment is shown in the grand staff below.

Handwritten musical notation for the fourth system. The treble clef staff continues the melodic line with slurs, accents, and dynamic markings *mp*. Fingering numbers 1-4 and breath marks (V) are present. The piano accompaniment is shown in the grand staff below.

Sonata s. 11 - 2ml.

Handwritten musical score for the first system. The treble clef staff contains a melodic line with a circled measure number '20' at the beginning. Above the staff, there are handwritten annotations: 'V' above a measure, '3' above a triplet, and '2V' above another measure. The dynamic marking 'mf' is written below the staff. The bass clef staff contains a few notes, including a circled 'f'.

Handwritten musical score for the second system. The treble clef staff features a melodic line with various ornaments and slurs. Above the staff, there are handwritten annotations: 'V' above a measure, '3' above a triplet, and '2' above another measure. The dynamic marking 'f' is written below the staff. The bass clef staff contains a complex accompaniment with many notes and slurs.

Handwritten musical score for the third system. The treble clef staff begins with the tempo marking '(Ped.) Poco piu mosso' and a circled measure number '30'. Above the staff, there is a handwritten '2' above a measure. The dynamic marking 'mf' is written below the staff. The bass clef staff contains a complex accompaniment with many notes and slurs.

Handwritten musical score for the fourth system. The treble clef staff contains a melodic line with a circled measure number '2' above a measure. Above the staff, there are handwritten annotations: '2V' above a measure, '3' above a triplet, and '2' above another measure. The bass clef staff contains a complex accompaniment with many notes and slurs.

Sonata s. 12 - 6mdl.

Handwritten musical score for the first system. The right hand (RH) part features a melodic line with various ornaments and a large bracketed section. The left hand (LH) part consists of a bass line with some chords. The word "Polof" is written in the LH staff.

Handwritten musical score for the second system, starting with a circled measure number "40". The RH part continues with a melodic line, and the LH part has a more active bass line. A watermark "NB noter" and "This music is copyright protected" is visible across the system.

Handwritten musical score for the third system. The RH part continues with a melodic line, and the LH part has a more active bass line. A watermark "NB noter" and "This music is copyright protected" is visible across the system.

Handwritten musical score for the fourth system. The RH part continues with a melodic line, and the LH part has a more active bass line. The word "Ped." is written at the bottom of the system.

Sonata s.13 - 6mx.

50

Handwritten musical notation for measures 50-51. The system consists of two staves. The upper staff is in treble clef with a key signature of one sharp (F#) and a common time signature. It contains a melodic line with various ornaments and slurs. The lower staff is in bass clef and contains a harmonic accompaniment. A large watermark 'NMB' is visible across the middle of the page.

Handwritten musical notation for measures 52-53. The system consists of two staves. The upper staff continues the melodic line from the previous system. The lower staff continues the harmonic accompaniment. A large watermark 'NMB' is visible across the middle of the page.

Handwritten musical notation for measures 54-55. The system consists of two staves. The upper staff continues the melodic line. The lower staff continues the harmonic accompaniment. A large watermark 'NMB' is visible across the middle of the page.

Handwritten musical notation for measures 56-57. The system consists of two staves. The upper staff continues the melodic line. The lower staff continues the harmonic accompaniment. A large watermark 'NMB' is visible across the middle of the page.

Sonata s. 14. - Emd.

a tempo I

fine

Egi 3. jan. 97.

Durata: 3.15

Total durata: ca. 12 min.

