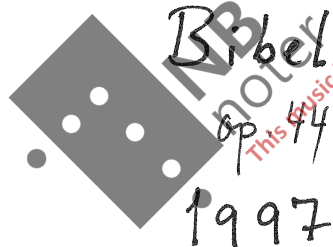


Eilert M. Hægeland:

"SKAPNINGENS LYS"

Solokantate for sopran og orgel
(Kantate nr. 6.)

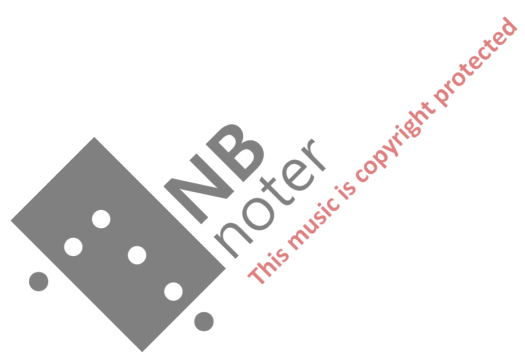
Tekst: Petter Dass og
Bibelen (Lat. og no.)



Durata: 11.30

Til Ellen Drevvatne —

Med støtte fra Komponistenes Videreleggsfond.



Til Ellen Drevvatne

SKAPNINGENS LYS

(A)

Solokantate for sopran

Tekst: Petter Dass og Bibelen og orgel
(lat. og no.)

Musikk: Eilert M. Hægeland
1997.

Sopr. *Andantino*

Org. *p(II)*

Org. *mf(I)*

Org. *p*

Org. *man.*

Org. *mp(I)*

Skapningens lys

(2)

Piano introduction in G minor, 4/4 time. The right hand features a melodic line with eighth and sixteenth notes, while the left hand provides a steady accompaniment of quarter notes. A dynamic marking of *p* (II) is present.

Resitando

Vocal and organ introduction. The vocal line (Sang.) is in 5/4 time, marked *rall.* and *p*. The organ accompaniment (Org.) is in 4/4 time. The lyrics are: "In prin-ci-pi-o cre-a-vit De-us".

30

Vocal and organ accompaniment. The vocal line (Sang.) is in 4/4 time, marked *f*. The organ accompaniment (Org.) is in 4/4 time, marked *f*. The lyrics are: "f Coe-lum et Terra, Coe-lum et Terra,". A *Ped.* marking is present at the bottom.

Piano accompaniment in 4/4 time, marked *mp*. The right hand features a melodic line with eighth and sixteenth notes, while the left hand provides a steady accompaniment of quarter notes. The lyrics are: "mp et tenebrae super".

Skapningens lys

(3)

fa- ci - em ab - ys - si et spi - ri - tus De - i fe - re - ba - tur su - per a - qu - as

40

p Ped.

Moderato (Tempo II)

1. Gud - stig les - er - her vel til
2. J. Sex Da - ge det paa - stod
man.

hvad jeg dig for - tel - le vil hvad i for - dum skee - de,
At Gud Her - ren bli - ve lod Skab - ning - en fuld - kom - men,

mf Ped.

Skapningens lys

(4.)

Handwritten musical score for the first system. The vocal line is on a single staff with lyrics: "Hvordan i be-gynd-el-sen For-den samt og Him-me-len Lius, Be-føst-ning, Vand og Jord, Al-ting af-ter Her-rens Ord". The piano accompaniment consists of two staves (treble and bass clef). A triplet of eighth notes is marked with a '3' and an arrow in the final measure of the system.

Handwritten musical score for the second system. The vocal line continues with lyrics: "Blev af Gud be-ree-de. Men-ni-sken til From-me." The piano accompaniment continues with two staves. The system concludes with a double bar line and repeat dots.

meno mosso (Tempo I)

Handwritten musical score for the third system. The system begins with a 3/4 time signature. The piano accompaniment is shown on two staves. A large watermark "NB noter" and "this music is copyright protected" is overlaid on the score.

Handwritten musical score for the fourth system. The vocal line has lyrics: "Dix-it-que De-us f 'fi-at Lux' et fac-ta est lux, di-". The piano accompaniment is on two staves. A dynamic marking "f(I)" is present in the piano part. The system ends with a double bar line and repeat dots.

Ped.

Skapningens lys

(5)

vi - sit De - us Lu - cem ac Te - ne - bras

Piu mosso (Tempo II)

p I det før - ste var det Mørck. Thi lod Gud som

p I det før - ste var det Mørck. Thi lod Gud som

aff en Ørck dju - et smugt frem - trin - ne. *mp* Gud fandt selv en

Sheppings lys

(6)

Vel-be hag! Saa lod hand den for-ste Dag

Ov-er ver-den Skin-ne.

mf Sam-me Ljus var Smuk at see, Ver-den var i Da-ge tre

der-med vel for-nøy-ed, Saa blev Dag og saa blev Nat

Sheepingens lys

Beg-ge til et Døgn blev sat Hver sit Navn til-fø-eg-et.

poco rit...

poco meno mosso

På den Tid var for-den tom al-le Ting var om og om

Meng-et i hvert and-et, Guds Aand svæ-ret mid-Ler-tid

Skapningens lys

ov-er Vand-et hid og did som da laa be-blam-det.

(*l'istesso tempo*)

(man).



Skapningens lys

mf # \sharp
Blandt al-le Gu-der er ud-i sær Ey

nog-en Gud saa stor, Saa-som vor ;

Vor Fad-er kald-is hand af hver Mand. # \sharp Th.

hand dit Navn og bær med Gavn, # \sharp Hand, som en Fad-er

Sleep in agnus lvs.

andantino

bør med oss gjør.

f (1)

poco rit...

poco meno mosso

piu sostenuto

f

ff

And er lvs, and er lvs, og

Prd.

Skapningens Lys

(Tempo I) (11.)

det er int-et mør-ke i ham f Det

The first system of the handwritten musical score consists of a vocal line and a piano accompaniment. The vocal line is written in a single treble clef staff with a key signature of one sharp (F#) and a common time signature. The lyrics are "det er int-et mør-ke i ham f Det". The piano accompaniment is written in grand staff notation (treble and bass clefs). The first two measures of the piano part feature a rhythmic pattern of quarter notes in the bass clef and chords in the treble clef. The key signature changes to two sharps (F# and C#) in the third measure. The system concludes with a fermata over a final chord in the treble clef.

Stier-ne-Loft og Pool er hands Stool, Men for-den hand sig

The second system of the handwritten musical score continues the vocal line and piano accompaniment. The vocal line lyrics are "Stier-ne-Loft og Pool er hands Stool, Men for-den hand sig". The piano accompaniment continues with similar rhythmic patterns and chord progressions. The system ends with a fermata over a final chord in the treble clef.

God ün - der fod Til skam-mel hvor-paa hand træ-de

The third system of the handwritten musical score continues the vocal line and piano accompaniment. The vocal line lyrics are "God ün - der fod Til skam-mel hvor-paa hand træ-de". The piano accompaniment continues with similar rhythmic patterns and chord progressions. The system ends with a fermata over a final chord in the treble clef.

hand, Hvert Ver-dens-Rom hand far-er om Dog

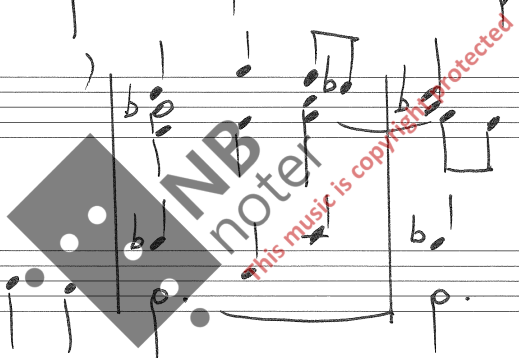
The fourth system of the handwritten musical score continues the vocal line and piano accompaniment. The vocal line lyrics are "hand, Hvert Ver-dens-Rom hand far-er om Dog". The piano accompaniment continues with similar rhythmic patterns and chord progressions. The system ends with a fermata over a final chord in the treble clef.

Skapningens lys.

vis-is int-et Spor hvor hand gaar.

Org.

mf



Skapningens lys

mp Træd-je Dag ved Her-rens Bud Gick der den Be-fal-ning ud



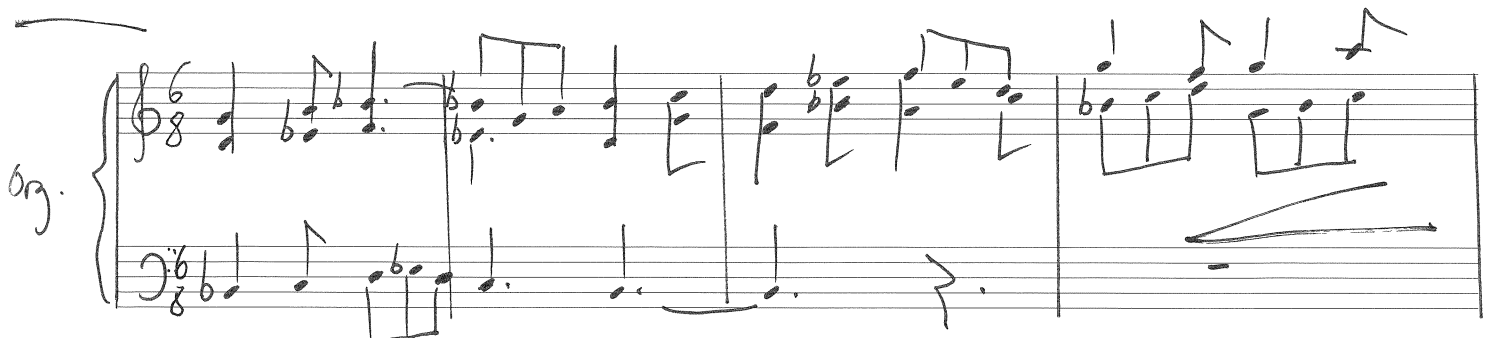
for-dun skul-le gi-ve Græs og Blom-ster ud-en Tall



Samt og Træ-er hvil-ke skal Vo-re rank og sti-ve.



Org.



Skapningens lys

(14.)

mf
Har-et gav nd- af sit Skiød Fem-te Dag som

Her-ren bød Man-ge fag-re* Fis-ke

Sant og Fug-le Sto-re* Smaa som ble skab-te

til at maa sæt-tes paa Vor Dis-ke

* Dass: fawvre * Dass: stoer

I *Shaptingus lyp*

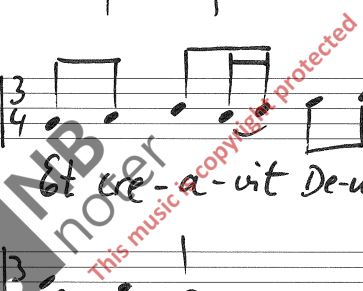
mf (Solo)

Handwritten musical score for the first system, featuring a grand staff with treble and bass clefs. The music is in 6/8 time, with a key signature of one flat. It includes dynamic markings such as *mf* and *p*, and a *Ped.* instruction. The notation includes various note values, rests, and accidentals.

Handwritten musical score for the second system, including a vocal line and a grand staff. The vocal line is in 3/4 time and contains the lyrics "Et cre-a-uit De-us Ho-mi-num". The piano accompaniment is in 3/4 time and includes a *Ped.* instruction.

Handwritten musical score for the third system, featuring a vocal line and a grand staff. The vocal line is in 4/4 time and contains the lyrics "Et cre-a-uit De-us Ho-". The piano accompaniment is in 4/4 time and includes a *senza ped.* instruction. A large watermark is present over this section.

Handwritten musical score for the fourth system, including a vocal line and a grand staff. The vocal line is in 4/4 time and contains the lyrics "- mi-num ad i - mag-i-nem Su-an". The piano accompaniment is in 4/4 time and includes a *P(I)* and *Ped.* instruction.

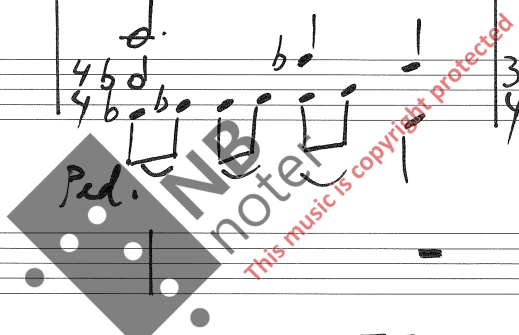


mf

Senza ped.

ad i ma-gi-nem De- - i cre-a-vit il-lum

Ped. p.



Mas-cu-lum et fe-mi-num cre-a - - - a - - -

Sheepwingsens Lys.

Handwritten musical score for the first system. It consists of a vocal line and a piano accompaniment. The vocal line has lyrics "vit e-os" under the notes. The piano accompaniment features a complex rhythmic pattern with many beamed notes. Dynamics include *p* and *pp*.

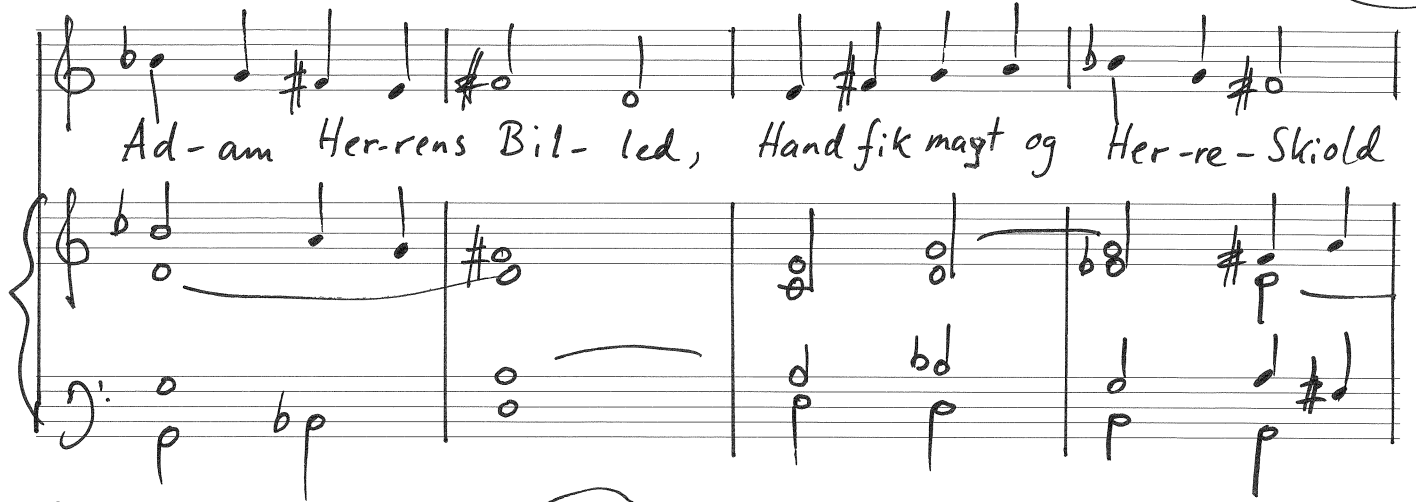
Handwritten musical score for the second system. It includes a vocal line and piano accompaniment. The piano accompaniment has a section marked *mp (lyse)*. There is a large watermark in the center that reads "NB noter" and "this music is copyright protected".

Handwritten musical score for the third system. It includes a vocal line and piano accompaniment. The vocal line has lyrics "Si- den ef-ter" under the notes. The piano accompaniment has a section marked *mf*. The tempo marking "Tempo II Moderato" is written above the piano part. Dynamics include *mf* and *f*.

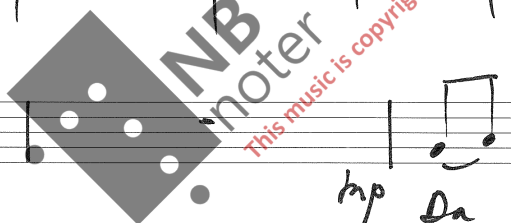
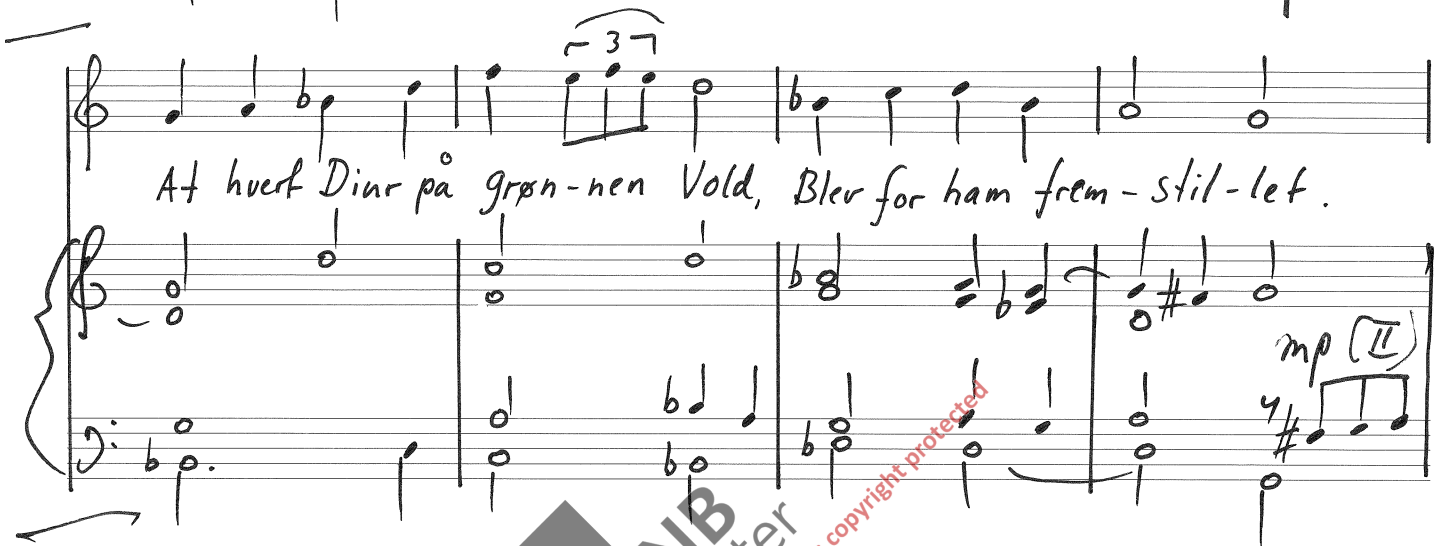
Handwritten musical score for the fourth system. It includes a vocal line and piano accompaniment. The vocal line has lyrics "al- le dem Da kom Men-ni- sket her frem," under the notes. The piano accompaniment features a simple harmonic accompaniment. Dynamics include *mf(I)* and *p*.

Skapningens lys

Ad-am Her-rens Bil-led, Hand fik magt og Her-re-Skiold



At hvert Dine på grøn-nen Vold, Blev for ham frem-stil-let.

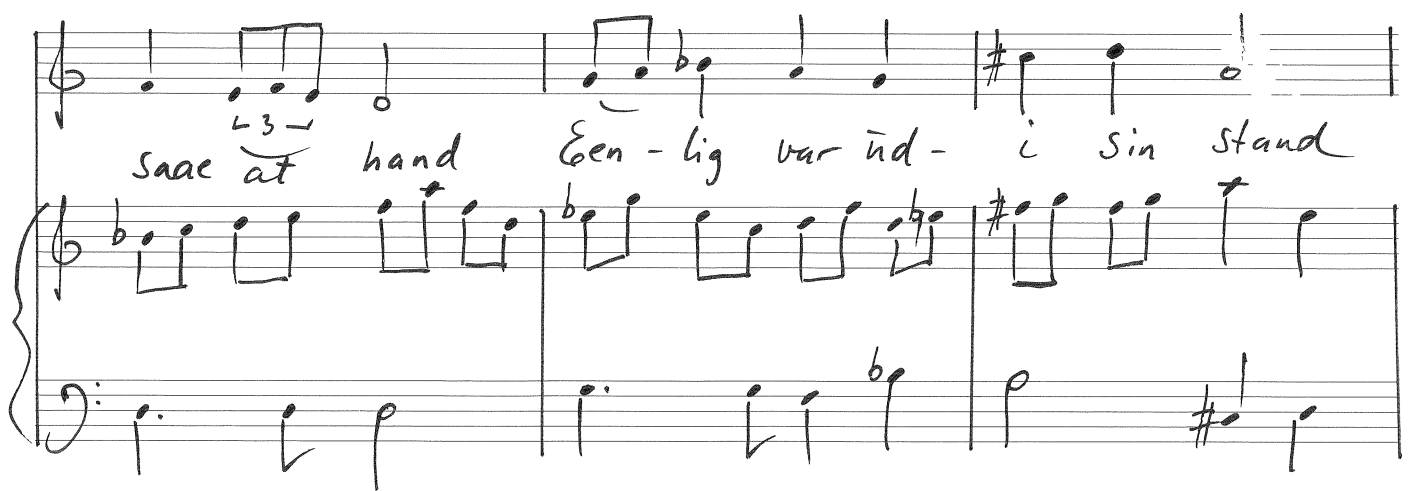


mp Da Gud Her-ren

man.



saæ at hand Een-lig var ind-i sin stand



Shepsingens lys

(19.)

Gav Gud ham en Qvin-de, Hun blev skabt ud -

af hans Been Som en Fru-e Smuck og reen

Kal- det hans Mand- in- de.

poco meno mosso

f Der Gud Her-ren saae at alt

Skapningens lys

20.

m

Skri-cket var i skibns Ge-stalt Hvor i sit hil-fel-le

Da lod hand med Vel-be-hag

Til en fest og Hvi-le-dag Syv-end Dag yd-

vel-ge.

mf (U)

Evige Juni 97.

Dur. 1130