

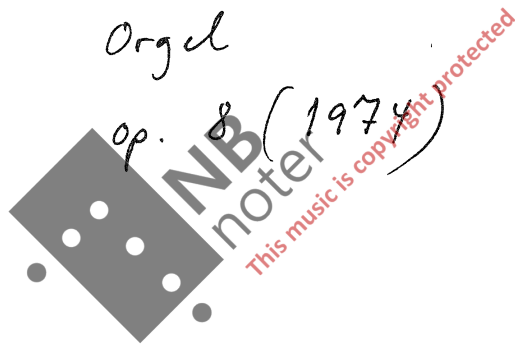
Durata 5.00 min.

Eitel M. Haglund:

"In Nomine Domini"

Orgel

op. 8 (1974)



Fu Nonino Domini.

E. Haglund (1974)
op. 8.

Handwritten musical score for the first system. It consists of three staves: a treble clef staff at the top, a grand staff (treble and bass clefs) in the middle, and a bass clef staff at the bottom. The top staff begins with a tempo marking of $\text{♩} = 234$ and a dynamic marking of *ff*. The middle and bottom staves also have a tempo marking of $\text{♩} = 234$. The music is written in a key with one flat (B-flat) and a 4/4 time signature.

Handwritten musical score for the second system, continuing from the first. It features three staves. The top staff includes a dynamic marking of *mf* and a *sw.* (sforzando) marking. The middle and bottom staves continue the musical notation. A large watermark is visible across the center of this system.

Handwritten musical score for the third system, continuing from the second. It features three staves. The top staff includes a dynamic marking of *f* and a *hw.* (half note) marking. The middle and bottom staves continue the musical notation. A large watermark is visible across the center of this system.

Handwritten musical score for the fourth system, continuing from the third. It features three staves. The top staff includes a dynamic marking of *p* (piano). The middle and bottom staves continue the musical notation. A large watermark is visible across the center of this system.

Handwritten musical notation for the first system, consisting of two staves. The upper staff is in treble clef and contains a melodic line with eighth and sixteenth notes, some beamed together. The lower staff is in bass clef and contains a bass line with similar rhythmic values. There are some accidentals (sharps and flats) and a fermata over a note in the upper staff.

Handwritten musical notation for the second system, consisting of two staves. The upper staff has a melodic line with some notes marked with a 'p' (piano) dynamic. The lower staff continues the bass line. There are some rests and accidentals throughout the system.

Handwritten musical notation for the third system, consisting of two staves. The notation is partially obscured by a large, semi-transparent watermark that reads "NB meter" and "This music is copyright protected". The music continues with various rhythmic patterns and accidentals.

Handwritten musical notation for the fourth system, consisting of two staves. The upper staff ends with a fermata and the instruction "(rörsst.)" above it. The lower staff has a fermata and the instruction "f Sw." above it. Below the lower staff, there is a separate line of notation with the instruction "(Rörverk)" above it and "ff" below it. The system concludes with a double bar line.

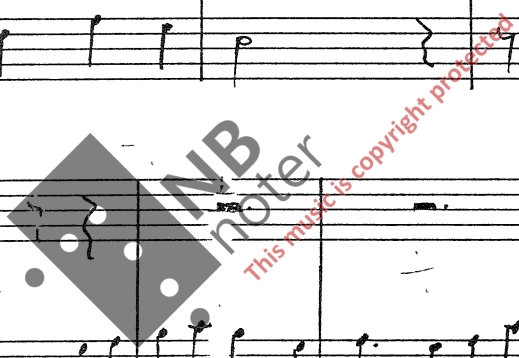
3/.

Handwritten musical notation for the first system. It consists of a grand staff with a treble clef on the top line and a bass clef on the bottom line. The music is written in a key with one sharp (F#) and a 3/4 time signature. The first system contains 8 measures. The bass line below the grand staff continues the melodic line.

Handwritten musical notation for the second system, continuing the grand staff and bass line from the first system. It contains 8 measures.

Handwritten musical notation for the third system, continuing the grand staff and bass line. It contains 8 measures.

Handwritten musical notation for the fourth system. It includes dynamic markings *f* and *ff* in the bass line. A performance instruction *(: förreik :)* is written in the bass line. The system contains 8 measures.



Handwritten musical score system 1. It consists of three staves. The top staff is a single treble clef staff with a melodic line. The middle and bottom staves are a grand staff (treble and bass clefs) with a piano accompaniment. The music is in a key with one sharp (F#) and a 3/4 time signature. The first measure has a fermata over the first two notes. The piano part features a complex rhythmic pattern with many beamed eighth and sixteenth notes.

Handwritten musical score system 2. It consists of three staves. The top staff continues the melodic line. The middle and bottom staves continue the piano accompaniment. There are dynamic markings: *pp.* in the bottom staff and *Sw* (Sforzando) above the middle staff. A large watermark is visible across the system.

Handwritten musical score system 3. It consists of a single treble clef staff. The music features a triplet of eighth notes marked with a '3' above them. A large watermark is visible across the system.

Handwritten musical score system 4. It consists of a grand staff. The piano accompaniment continues with various chords and rhythmic patterns. A large watermark is visible across the system.

Handwritten musical score system 5. It consists of a grand staff. The piano accompaniment continues. The system ends with a dynamic marking *ff Forc.* (fortissimo forzando) in the bottom staff. A large watermark is visible across the system.

5)

ff tr.v.

Handwritten musical notation for the second system, including various note values and rests.

Handwritten musical notation for the third system, including various note values and rests.

