

Eilert M. Høgland:

Frå Fyresdal -

Fire klavirstykke .

op. 33.

1993

1. På Stoglen. (4.40)
2. Du svalende vind. (3.15)
3. Visa i Hegglandsgrund. (2.20)
4. Slottetonaar etter Veummen. (3.00)



total: 13.15

Klavur. $\text{♩} = 60$
Tranquillo

"Frå Fyresdal" - Fire klavurstykkje

(5/)

Til Sverre Eftestøl

1. På støylen (on the hill-farm)

Eilert M. Hægeland 92

Handwritten musical notation for the first system. It features a grand staff with treble and bass clefs. The right hand has a 5/4 time signature and a piano (p) dynamic. The left hand is mostly silent. There are some trills and triplets indicated with '3' and arrows.

Handwritten musical notation for the second system. The right hand continues with a 5/4 time signature. The left hand has a 4/4 time signature. Pedal markings (Ped.) and asterisks (*) are present below the staff.

Handwritten musical notation for the third system. The tempo is marked 'poco più mosso'. The right hand has a 6/8 time signature and a mezzo-piano (mp) dynamic. Pedal markings (Ped.) and asterisks (*) are present.

Handwritten musical notation for the fourth system. It continues the piece with various chords and melodic lines in both hands.

Handwritten musical notation for the fifth system. The right hand has a 9/8 time signature and a mezzo-forte (mf) dynamic. The left hand has a forte (f) dynamic. There are some trills and slurs.

Handwritten musical notation for the sixth system. The tempo is marked 'a tempo'. The right hand has a 5/4 time signature and a piano (p) dynamic. Pedal markings (Ped.) are present.

Pai støyken s. 21.

Handwritten musical score for the first system, featuring a grand staff with treble and bass clefs. The time signature is 5/4. The notation includes various note values, rests, and dynamic markings such as *Ped.* and ** Ped.*. There are also some handwritten annotations like "L3-1" and "L3-#".

Handwritten musical score for the second system, continuing the piece. It features a grand staff with treble and bass clefs. The time signature changes to 3/4. The notation includes various note values, rests, and dynamic markings such as *Ped. Ped. ** and *L3-1*.

Handwritten musical score for the third system, continuing the piece. It features a grand staff with treble and bass clefs. The time signature changes to 5/4. The notation includes various note values, rests, and dynamic markings such as *a tempo*, *poco rit.....*, and *mp*. There are also some handwritten annotations like "L3-#" and "Ped Ped".

Handwritten musical score for the fourth system, continuing the piece. It features a grand staff with treble and bass clefs. The notation includes various note values, rests, and dynamic markings such as *Ped.* and *Ped.*. There is a large watermark in the center of the page that reads "NB meter This music is copyright protected".

Handwritten musical score for the fifth system, continuing the piece. It features a grand staff with treble and bass clefs. The notation includes various note values, rests, and dynamic markings such as *Ped.* and *Ped.*. There are also some handwritten annotations like "L3-#" and "L3-1".

Two empty grand staves at the bottom of the page, consisting of treble and bass clefs on a five-line staff.

På Støylen s. 3.

(s. 3.)
Emil.

Handwritten musical score for the first system. It consists of two staves: a treble clef staff with chords and a bass clef staff with a bass line. The music is in a key with two flats (B-flat and E-flat). The first measure has a dynamic marking of *f*. There are various chord symbols and accidentals throughout the system.

Handwritten musical score for the second system. It consists of two staves. The treble clef staff has a dynamic marking of *mf* and a marking '8va' above the first measure. The bass clef staff has a 'Ped.' instruction above the first measure. The music continues with chords and a bass line.

Handwritten musical score for the third system. It consists of two staves. The treble clef staff has a dynamic marking of *mf* and a marking 'Loco' above the first measure. The bass clef staff has a '9/8' time signature above the first measure and 'Ped.' instructions above the first and second measures. The music continues with chords and a bass line.

Handwritten musical score for the fourth system. It consists of two staves. The treble clef staff has a dynamic marking of *mf* above the first measure. The bass clef staff continues with chords and a bass line.

Handwritten musical score for the fifth system. It consists of two staves. The treble clef staff has a dynamic marking of *f* above the first measure. The bass clef staff continues with chords and a bass line.

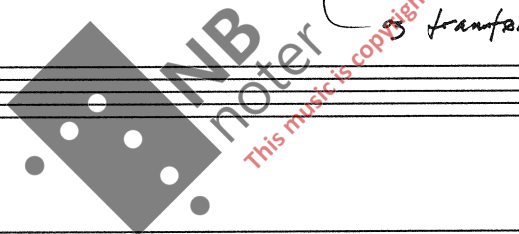
Handwritten musical score for the sixth system. It consists of two staves. The treble clef staff has a dynamic marking of *f* above the first measure. The bass clef staff continues with chords and a bass line.

Handwritten musical notation for the first system, featuring a grand staff with treble and bass clefs. The music includes various note values, rests, and dynamic markings. A 'Ped.' marking is present below the bass staff. A time signature of 5/4 is indicated.

Handwritten musical notation for the second system, continuing the piece. It includes a 4/4 time signature and 'Ped.' markings. There are asterisks under the bass staff in the first and third measures.

Handwritten musical notation for the third system, including a 5/4 time signature, '8va' and 'pp' markings, and a 'Durata 4.40.' annotation. There are also some handwritten numbers like 'r37' and '43'.

(avskatta i Birmingham kensken 92)
3 framfard den.



♩ = 69

2. Døstalande vind.

Eilert M. Naglaus 93

cantabile

2. Du sovalande vind / G.M.H.

(S. 6.)

Handwritten musical score for the first system. It consists of two staves: a treble clef staff and a bass clef staff. The music includes various notes, rests, and dynamic markings such as *ff*. There are also some accidentals and a fermata over a note in the bass staff.

Handwritten musical score for the second system. It features a treble clef staff and a bass clef staff. A 4/4 time signature is present. The tempo marking *braghetto meno mosso* is written above the staff. Dynamics include *p*. There are several triplet markings (3) and some slurs.

Handwritten musical score for the third system. It consists of two staves with treble and bass clefs. The music continues with various rhythmic patterns, including triplets and slurs. Dynamics are not explicitly marked in this system.

Handwritten musical score for the fourth system. It features a treble clef staff and a bass clef staff. A 6/8 time signature is present. The tempo marking *piu mosso* is written above the staff. Dynamics include *f*. There are several triplet markings (3) and some slurs.

Handwritten musical score for the fifth system. It consists of two staves with treble and bass clefs. The music continues with various rhythmic patterns, including slurs and accidentals.

Handwritten musical score for the sixth system. It features a treble clef staff and a bass clef staff. The music concludes with various notes, rests, and dynamics.

2. Du soelaude viud / E.M.H

Handwritten musical score for the first system, featuring a treble and bass clef with various notes and rests.

Handwritten musical score for the second system, featuring a treble and bass clef with various notes and rests.

Handwritten musical score for the third system, including tempo markings "poco rit..." and "a tempo Cantabile" with a quarter note equal to 69. The system contains notes, rests, and dynamic markings like *f* and *p*.

Handwritten musical score for the fourth system, featuring a treble and bass clef with various notes and rests.

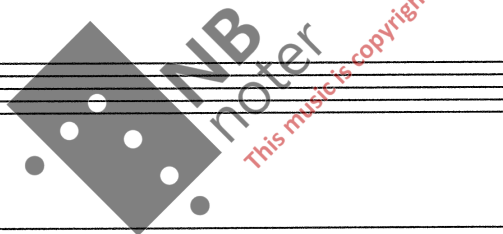
Handwritten musical score for the fifth system, including a tempo marking "♩ = ca. 54" and a time signature change to 6/8. The system contains notes, rests, and dynamic markings like *mf*.

Handwritten musical score for the sixth system, starting with the marking "leggiero". The system contains notes, rests, and dynamic markings like *mf*.

2. Du soetende vint / EMH

(s. 8.)

Rurata 3. 15.



♩. = ca. 54 Cantabile

'Frøi Fyresdal' - Fire klavierspjøleje .

(S. 9.)

Til Astrid Orntvist i
takkeord.

3. Visa i Hegglandsprent

Erlit M. Heggland
1993 (sept.)

Pad. Sempre

3. Vise i Hegglandsgrund

poco meno mosso et animato

30.

poco accelerando

37

Visa i Hegglandsgrønd - EMH

poco rit.

Sostenuto

rit...

Handwritten musical score for 'Visa i Hegglandsgrønd' in G major, 2/4 time. The score consists of two staves: a treble clef staff and a bass clef staff. The treble staff features a complex melodic line with many beamed notes and slurs. The bass staff provides a simple harmonic accompaniment with chords and single notes. Dynamics include *mp* and *p*. Pedal markings are present in the bass staff. The piece concludes with a double bar line.

Durata 2.20

'Frø Fyresdal' - Fire klavinstykke

$\text{♩} = 6.84$

Til Signe H. Bakken. 4. Ståttetonar etter Væmen * Eilert M. Hægeland 93.

Handwritten musical score for 'Frø Fyresdal' - Fire klavinstykke, first system. It is in G major and 3/4 time. The treble staff has a melody with slurs and accents. The bass staff has a simple accompaniment. Dynamics include *f*. There are markings for *mf* and *p* in the bass staff. A watermark 'NB noter' is visible over the score.

Handwritten musical score for 'Frø Fyresdal' - Fire klavinstykke, second system. The treble staff continues the melody with slurs and accents. The bass staff continues the accompaniment. Dynamics include *c.f* and *mf*. A watermark 'NB noter' is visible over the score.

Handwritten musical score for 'Frø Fyresdal' - Fire klavinstykke, third system. The treble staff features a triplet of eighth notes. The bass staff continues the accompaniment. Dynamics include *ff*. A watermark 'NB noter' is visible over the score.

Handwritten musical score for 'Frø Fyresdal' - Fire klavinstykke, fourth system. The treble staff continues the melody. The bass staff continues the accompaniment. Dynamics include *mf*. A watermark 'NB noter' is visible over the score.

* Ståttetonar er etter Petter Væmen i Arne Brøndals oppdikning. Dette gjeld hovud-delen. Mellomdelar er egne.

Frå Fyresdal
4. Sluttetoner eller Væimen —

5.12.
Eml 93.

Handwritten musical notation for the first system. The treble clef staff contains a melody with eighth and sixteenth notes, including a triplet of eighth notes. The bass clef staff provides a harmonic accompaniment with chords and single notes. Dynamic markings include *poco f* and *c.f.* (crescendo forte).

Handwritten musical notation for the second system. The treble clef staff continues the melodic line with eighth notes and rests. The bass clef staff features a steady accompaniment with quarter notes and chords. A *p.* (piano) marking is present.

Handwritten musical notation for the third system. It includes a first ending bracket in the treble clef staff, marked with a first ending symbol. The piece concludes with a repeat sign (double bar line with dots) and a fermata over the final note.

Handwritten musical notation for the fourth system. The treble clef staff features a triplet of eighth notes. The system is marked *rit. e cresc.* (ritardando e crescendo). It ends with a double bar line and the word *fine.*

Handwritten musical notation for the fifth system. The treble clef staff begins with a *mf* (mezzo-forte) dynamic marking and contains several triplet markings over eighth notes. The bass clef staff continues with a simple accompaniment.

Handwritten musical notation for the sixth system. The treble clef staff features a melodic line with eighth notes and rests. The bass clef staff provides a harmonic accompaniment with chords and single notes.

"Frå Fyresdal"

4. Slätttonar etter Væmme -

Emx. 93. s. 13.

Handwritten musical notation for the first system, featuring treble and bass staves with notes, rests, and dynamic markings like 'p'.

Handwritten musical notation for the second system, including treble and bass staves with triplets and dynamic markings like 'mp'.

Handwritten musical notation for the third system, showing treble and bass staves with chords and dynamic markings like 'mf'.

Handwritten musical notation for the fourth system, with treble and bass staves, a large watermark 'NB noter', and dynamic markings like 'p'.

Handwritten musical notation for the fifth system, including treble and bass staves with dynamic markings like 'f' and 'p'.

Dal-Si al-Si e
poi 2.

Durata 3.00 min.