

5

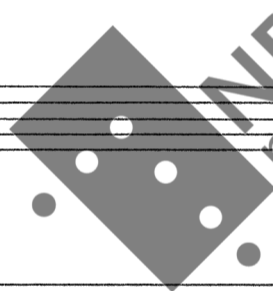
Til familien Dovland.

Eilert Høglund:

Dovlandia,

Suite

for klaver.



NB
noter

This music is copyright protected



L Gyro og Ola

Suite
Dovlandia. 1. Langeleik.

For klaver
Eilert Hageland 1974.

Handwritten musical score for the first system. The piece is in 2/4 time and D major. The right hand features a melodic line with triplets and slurs, while the left hand provides a steady accompaniment. Performance markings include *mf*, *ped*, and *simile*.

Handwritten musical score for the second system. The right hand continues the melodic development with slurs and ties. The left hand accompaniment remains consistent. Performance markings include *sim.* and *Senza ped.*

Handwritten musical score for the third system. This system includes a triplet in the right hand and a dynamic marking of *p*. The left hand accompaniment continues with slurs. Performance markings include *p*.

Handwritten musical score for the fourth system. The right hand features a triplet and a dynamic marking of *mp*. The left hand accompaniment includes slurs and a dynamic marking of *mp*. Performance markings include *mp* and *Ped*.

Handwritten musical score for the fifth system. The right hand has a dynamic marking of *mf* and includes slurs and ties. The left hand accompaniment continues with slurs. Performance markings include *mf* and *ped*.

Handwritten musical score for the sixth system. The right hand features a triplet and a dynamic marking of *mf*. The left hand accompaniment includes slurs and a dynamic marking of *mf*. Performance markings include *mf* and *simile*.

Til Kjersti

2. Song i skogen.

Eilert Hageland

Handwritten musical score for the first system. The treble clef staff begins with a piano (*p*) dynamic. The bass clef staff starts with a mezzo-piano (*mp*) dynamic. The music consists of several measures of eighth and sixteenth notes, with some rests and phrasing slurs.

Lokk.

Til Anne Gro

Eitert Hagland

Handwritten musical score for the second system. The treble clef staff features a 9/8 time signature and includes dynamics such as *p*, *mp*, and *f*. The bass clef staff has a *p* dynamic. The music includes triplets and various rhythmic patterns.

Handwritten musical score for the third system. The treble clef staff has a 6/8 time signature. The bass clef staff includes dynamics like *p* and *mp*. The music features eighth and sixteenth notes with some rests.

Handwritten musical score for the fourth system. The treble clef staff has a 9/8 time signature. The bass clef staff includes dynamics like *p*, *mp*, and *f*. The music consists of several measures of eighth notes.

Handwritten musical score for the fifth system. The treble clef staff is marked with *rit.....*. The bass clef staff includes dynamics like *p*. The music concludes with a few measures of eighth notes.

4. Til Gunnar.

Fjelltrall.

Eilert Hageland

3/4 f
Ped. sim.

mp.
Langa ped

Ped.

5 sf
Ped.

Ped p.

f

Ervi jan. 1974.

fine.