

~ VENI SANCTE SPIRITUS ~

Andante rubato

HELGE HURUM

Sopran/Alto

Tenor/Bass

Sopran

Alto

Tenor

Bass

Piano

poco a poco cresc.

pp ve- ni- ve- ni- ni- ve-

pp ve- ve-e- ni ve- ve-e- ni- ve-

poco a poco cresc.

Sopran/Alto

Tenor/Bass

Sopran

Alto

Tenor

Bass

Piano

cresc.

p ve-e-ni ve-ni sa-

ve e ni sa-anc-te SPI-RI-TUS ve-e- ni (a-

ni- (a- ve-e- ni (a-

cresc.

Sopran/Alto

Tenor/Bass

Sopran

Alto

Tenor

Bass

Piano

sa-a-anc te

spi ri tu- -s ve- e-e-ni

sa-a-anc-te

(A)

Sopran/Alto

Tenor/Bass

Sopran

Alto

Tenor

Bass

Piano

mare.

sub.p

ete-

ve ni sanc-te spi-ri-tus - mir-te ce-li tu-us RU-U-cis tu-u-q

marc.

p

(B) Allegro mod.

Sopran/Alto

Tenor/Bass

Sopran

Alto

Tenor

Bass

Piano

mf *dim.* *pp* *f* *mf*

- di - um -

ra - di - um -

ra - di - um -

ve - ni pa - ter

ra - di - um

ra - di - um

mf *dim.* *pp* *f* *mf*

Sopran/Alto

Tenor/Bass

Sopran

Alto

Tenor

Bass

Piano

pa - u pe - rum ve - e - ni ve - ni da - tor

f *mf*

f *mf*

Sopran/Alto

Tenor/Bass

Sopran

Alto

Tenor

Bass

Piano

mu- ne- rum ve- e- ni ve- ni lu- men

f

Sopran/Alto

Tenor/Bass

Sopran

Alto

Tenor

Bass

Piano

cor- di- um - ve- ni lu- men cor- di lu- men cordi

cresc.

cresc.



Sopran/Alto

Tenor/Bass

Sopran

Alto

Tenor

Bass

Piano

um —

um

um

ve-ni lu-men co-or-di-um

Sopran/Alto

Tenor/Bass

Sopran

Alto

Tenor

Bass

Piano

con-sol la-tor con-sol la-tor op-ti-me

con-

con-sol

op-ti-me

con-sol la-tor





Sopran/Alto

Tenor/Bass

Sopran

Alto

Tenor

Bass

Piano

pp

mf

pp

mf

pp

mf

Dul-cis Hos-pes

a-ni-ma-e

a-ni-ma-e

Dul-cis Hos-pes

Sopran/Alto

Tenor/Bass

Sopran

Alto

Tenor

Bass

Piano

cresc. molto...

ff

cresc. molto...

ff

Dul-cis Hos-pes

a- a- ni

ma- a- e



Sopran/Alto

Tenor/Bass

Sopran

Alto

Tenor

Bass

Piano

Sopran/Alto

Tenor/Bass

Sopran

Alto

Tenor

Bass

Piano

rit...

meno mosso. sost.

(d. c ve- ni sanc- te spi - ri)

Dul- ce re- tri ge- ni-

rit...

meno mosso sost.

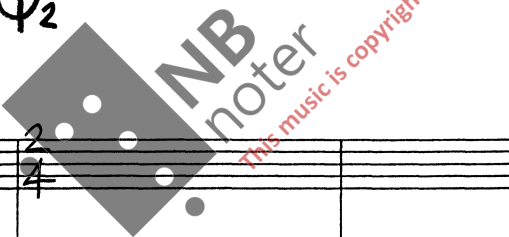
B.

Handwritten musical score for section B. The score includes staves for Soprano/Alto, Tenor/Bass, Soprano, Alto, Tenor, Bass, and Piano. The key signature is B-flat major (two flats). The time signature is 2/4, indicated by a circled '2' with a vertical line through it. Performance markings include *sub p.* and *rit... dim.*. The Soprano part has lyrics: "ve - ni pa - ter pa - u pe - rum ve - e - m".

E

Andante

Handwritten musical score for section E. The score includes staves for Soprano/Alto, Tenor/Bass, Soprano, Alto, Tenor, Bass, and Piano. The key signature is B-flat major (two flats). The time signature is 3/4, indicated by a circled '3' with a vertical line through it. Performance markings include *sost.*, *mp*, and *cresc. molto*. The Soprano part has lyrics: "ve - ni pa - ter pa - u pe - rum ve - e - m".



9. **Andante** *solo*

mp in-

conducted.

molto dim. *P*

Sopran/Alto

Tenor/Bass

Sopran

Alto

Tenor

Bass

Piano

ve-ni

sa-a-ancte spi-ri - tus

conducted

molto dim *P*

Sopran/Alto

Tenor/Bass

Sopran

Alto

Tenor

Bass

Piano

la-bo-re re-qui - es in aes-tu tem-per-i est i-in fle-e-tu so-la-ti

PP

m (a)

PP

Sopran/Alto
 Tenor/Bass
 Sopran
 Alto
 Tenor
 Bass
 Piano

um - o m - ux be - a ti - is - si ma - re -

mf

mf

Sopran/Alto
 Tenor/Bass
 Sopran
 Alto
 Tenor
 Bass
 Piano

- ple cor - dis inti - ma tu - or um fi - de - li - um si - ne tuo nu - mi - ne

sub. p

p

p

Sopran/Alto
 Tenor/Bass
 Sopran
 Alto
 Tenor
 Bass
 Piano

ni-hil est in no-mi-ne ni-nil-i il est

rit...
(conducted.)
dim..
dim..

p
p
p
p

Sopran/Alto
 Tenor/Bass
 Sopran
 Alto
 Tenor
 Bass
 Piano

in-nox-i-um

G.P
G.P
G.P

p



12

Allegro

Sopran/Alto

Tenor/Bass

Sopran

Alto

Tenor

Bass

Piano

mf

f

La-va -

qu- od -

e-e-est -

sor- di - um

mf

f

Sopran/Alto

Tenor/Bass

Sopran

Alto

Tenor

Bass

Piano

ff

sub.p

f

est

son- di - um -

qu- od

a-e-est

Ri-qa

a- ri- dum

Ri-qa -

qu- od -

ff

sub.p

f



Sopran/Alto
Tenor/Bass
Sopran
Alto
Tenor
Bass
Piano

p *ff* *mf*

Ri-qa quod e-est a-vi-dum sa-na sa-na

Sopran/Alto
Tenor/Bass
Sopran
Alto
Tenor
Bass
Piano

p *mf* *f*

CI-UM quod sa-na quod sa-gu-ci e-e-e-est



Handwritten musical score for the first system, measures 1-4. The score includes parts for Soprano/Alto, Tenor/Bass, Soprano, Alto, Tenor, Bass, and Piano. The key signature is B-flat major. The Soprano/Alto part has a circled 'H' above the staff. The Tenor part has lyrics: "um - Fiec-te qu-od est ri-qi-aū-". The Piano part has dynamic markings *fp* and *p*. A circled '1' is written above the Soprano/Alto staff.

Handwritten musical score for the second system, measures 5-8. The score includes parts for Soprano/Alto, Tenor/Bass, Soprano, Alto, Tenor, Bass, and Piano. The Soprano part has lyrics: "Fo-ve". The Alto part has lyrics: "u-um - qu-od Fo-ve". The Tenor part has lyrics: "Fo-o-ve-". The Bass part has lyrics: "qu-u-od-". The Piano part has dynamic markings *p*. A large watermark "NB noter" and "this music is copyright protected" is overlaid on the score.

Sopran/Alto

Tenor/Bass

Sopran

Alto

Tenor

Bass

Piano

f *mf*

qu-od est fri-qi-du-um-

Sopran/Alto

Tenor/Bass

Sopran

Alto

Tenor

Bass

Piano

P *mp* *mf* *f*

re-ge qu-od e-est DE-e-e VI-U-UM

Un poco rit...

Sopran/Alto

Tenor/Bass

Sopran

Alto

Tenor

Bass

Piano

Re-ge quod e-est De-vi-UM

I *meno mosso*
 TACET 1X. *solo ad lib*

Sopran/Alto

Tenor/Bass

Sopran

Alto

Tenor

Bass

Piano

Pa-da-tu-is Fi-de-li-

Ba-bap bo-i-a-p bo-i-a-do i a-bap do-i a-bo-e-a-bop

K

(opt. rep. ad lib.) poco a poco cresc. 17

1x. 2x.

Sopran/Alto: bu - us - in te - con - ti -

Tenor/Bass: den - ti - bus - sa - a - a - cru - um se - e - pte na -

Sopran: TACET 1.X

Alto: a - mf do i e a - bap

Tenor: mf/f Ba - bap bap ba - o - i - e - a - bap

Bass: mf/f TACET 1.X

Piano: mf/f TACET 1.X

L

1x. 2x.

Sopran/Alto: ri - u - um - da - vir - tu - tis meri - tum - Da -

Tenor/Bass: ri - u - um - da - vir - tu - tis meri - tum - Da -

Sopran: div. a - i - e - a - do - a - bap

Alto: #/mf

Tenor: #/mf

Bass: #/mf

Piano: #/mf

Sopran/Alto *mp* A-men A- men

Tenor/Bass

Sopran *pp*

Alto *mp* *cod*

Tenor *mp* *cod*

Bass *mp* *cod*

Piano *mp* *cod* *pp*

Sopran/Alto *poco accel.* *p* *(D.S.)¹*

Tenor/Bass

Sopran *p*

Alto *p*

Tenor *p* Ri-qa sa-na

Bass *pp* La-va-

Piano *p* *(D.S.)¹*



Andante sost.

Sopran/Alto

Tenor/Bass

Sopran

Alto

Tenor

Bass

Piano

f *ff* *3* *b* *3* *R*

Re-ge- qu-od-est De-e-vi- um qu-od

f *ff* *3* *b* *3* *P*

ADD sra. *f* *3* *b* *3*

2/4 2/4 2/4 2/4 2/4 2/4

(Conducted.)



molto rit...

Sopran/Alto

Tenor/Bass

Sopran

Alto

Tenor

Bass

Piano

vi-um A-A-men

e-e-est De-e

4/4 4/4 4/4 4/4

(N) mod.

SOLO 2.X

Sopran/Alto
Tenor/Bass
Sopran
Alto
Tenor
Bass
Piano

mp Hei-laag

mp

DO - OU

(Bm)

mp

(S.) 2

Sopran/Alto
Tenor/Bass
Sopran
Alto
Tenor
Bass
Piano

1. An- de lja-sens folk send frå him- len til ditt folk strå- lar
2. trøys- tar al- le best mil- de rei- ne sje- le- giest du er

(1. SOP. TACET 1.X)

mp DOU- (m-)

(m-)

(m-)

p.

1.)

Sopran/Alto
 av din kjar-leiks-eld Til oss nin-ge kom vår far tyll med
 sø-last kvi le

Tenor/Bass

Sopran

Alto

Tenor

Bass

Piano

Sopran/Alto
 Vin dei to-me kar Kom til kvar ein hung-rid sjei Du er

Tenor/Bass

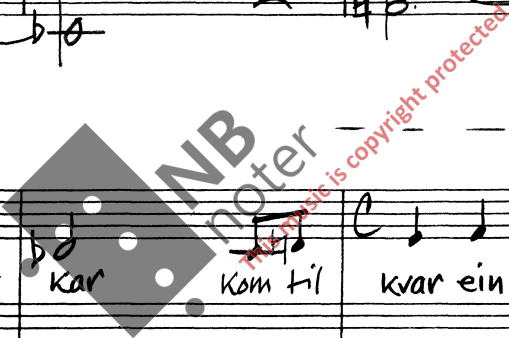
Sopran

Alto

Tenor

Bass

Piano



2.)

Sopran/
Alto

Tenor/
Bass

Sopran

Alto

Tenor

Bass

Piano

stad Ro hjå deg den trøytte finn Tå-rar tur- kar du på

Sopran/
Alto

Tenor/
Bass

Sopran

Alto

Tenor

Bass

Piano

Kinn du gjer den som syr-gjer glad

(D.C in D.S) $\text{\textcircled{0}}$ piu moso

mf

mf

mf piu mosso

se-le lios lat eia og

Sopran/Alto

Tenor/Bass

Sopran

Alto

Tenor

Bass

Piano

glod strøy-ma frå di strå-le Hod

dju-past ned i hjar-te

a-(m)

Sopran/Alto

Tenor/Bass

Sopran

Alto

Tenor

Bass

Piano

-krå

ur-an deq er all-ting tomt li- vet fa- tigs-led og



(D.S.)²

Sopran/
Alto

Tenor/
Bass

Sopran

Alto

Tenor

Bass

Piano

Handwritten musical score for the first system, measures 1-4. The score includes vocal parts (Sopran/Alto, Tenor/Bass, Sopran, Alto, Tenor, Bass) and piano accompaniment. The lyrics are: "skomt in-kie reint her er a sia". The piano part features a 4/4 time signature and a key signature of two flats. A dynamic marking 'p' is present at the beginning. A 'D.S.' marking with a '2' is at the end of the system.

(D.S.)

♩^2

Sopran/
Alto

Tenor/
Bass

Sopran

Alto

Tenor

Bass

Piano

Handwritten musical score for the second system, measures 5-8. The score includes vocal parts (Sopran/Alto, Tenor/Bass, Sopran, Alto, Tenor, Bass) and piano accompaniment. The lyrics are: "tus - > > > A - A MEN". The piano part continues with the 4/4 time signature and two flats key signature. A dynamic marking 'p' is present. A 'D.S.' marking with a '2' is at the beginning of the system. The score ends with a double bar line.

Aug 92

Helge Hurum

