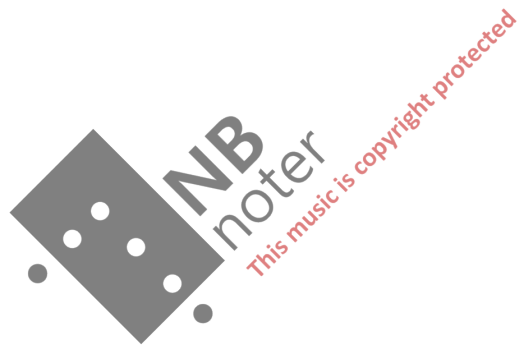


RISTO HOLOPAINEN

# Minus

Percussion ensemble and soloist





# minus

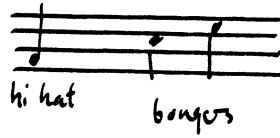
for percussion ensemble of five  
with one soloist

© Risto Holopainen 1997

Duration: ca 5'30

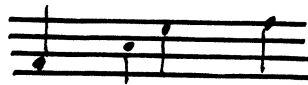


percussion I



hi hat bongos

percussion II



snare drum 2 wood blocks triangle

percussion III  
(Soloist)



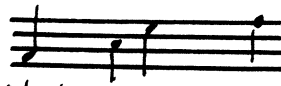
2 low tom-toms rototom cow bell

percussion IV



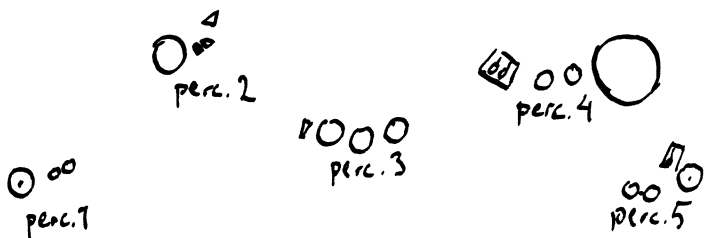
bass drum 2 high tom-toms maracas

percussion V



hi hat 2 timbales cymbals

SUGGESTED STAGING.



audience

minus

© RISTO HOLOPAINEN 1997

♩ = 80

perc. 1 bg  
hh

perc. 2 tr  
wb  
sd

perc. 3 cb  
rt  
tt  
(low)

perc. 4 mar  
tt  
bd

perc. 5 cast  
timb  
hh

bg  
hh

tr  
wb  
sd

cb  
rt  
2tt  
(low)

mar  
2tt  
(high)  
bd

cast  
timb  
hh

Handwritten musical score for measures 13-18. The score includes staves for:

- bg hh (bongos/hand drums): Features eighth notes with accents and a triplet of eighth notes in measure 15. Dynamics include *mf*.
- tr 2wb sd (trumpet 2 w/ woodshed): Empty staff.
- cb rt 2tt (cornet 2 w/ trumpet): Features quarter notes with accents and a triplet of quarter notes in measure 15. Dynamics include *mp*.
- mar 2tt bd (maracas 2 w/ timbales/bass drum): Empty staff.
- east timb hh (east timbales/hand drums): Features eighth notes with accents and triplets of eighth notes in measures 15 and 16. Dynamics include *mf*.

Measure numbers 13, 14, 15, 16, 17, 18 are indicated at the bottom of the staves.

Handwritten musical score for measures 19-21, starting with a section marker **A** in a box above measure 19. The score includes staves for:

- bg hh (bongos/hand drums): Features eighth notes with accents and a quintuplet of eighth notes in measure 20. Dynamics include *p*, *mf*, *f*, and *p*.
- tr 2wb sd (trumpet 2 w/ woodshed): Empty staff.
- cb rt 2tt (cornet 2 w/ trumpet): Features quarter notes with accents and a quintuplet of quarter notes in measure 20. Dynamics include *f*, *p*, and *f*.
- mar 2tt bd (maracas 2 w/ timbales/bass drum): Features eighth notes with accents and a quintuplet of eighth notes in measure 20. Dynamics include *mf*.
- east timb hh (east timbales/hand drums): Features eighth notes with accents and a quintuplet of eighth notes in measure 20. Dynamics include *mf*, *f*, and *f*.

Measure numbers 19, 20, 21 are indicated at the bottom of the staves.



37

bg  
hh

tr  
2wb  
sd

cb  
rt  
2tt

mar  
2tt  
bd

cast  
timb  
hh

mf

C

43

bg  
hh

tr  
2wb  
sd

cb  
rt  
2tt

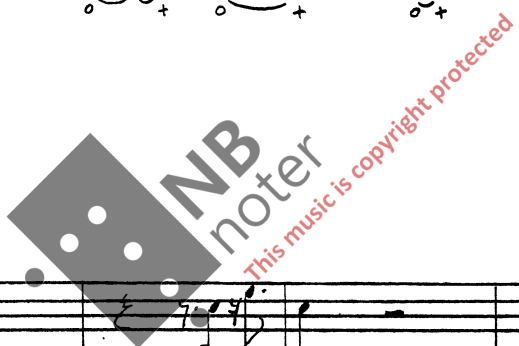
mar  
2tt  
bd

cast  
timb  
hh

f

mf

ppp





perc. 1

bg hh

mp

p

pp

perc. 3

cb rt 2tt

f sempre

49

bg hh

sempre

pp

cb rt 2tt

ff

55

D

bg hh

mf

p crescendo

drum sticks

p

cb rt 2tt

mar 2tt bd

ppp

crescendo

cast timb hh

61

- 5 -



perc. 3

cb  
rt  
2tt

79 sfz 5 sfz 3 sfz 3 sfz 3 sfz

p mf sfz

84 f pp sfz mf sfz

89 f pp f

♩ ⇒ ♩ = 80

3 3 3

**F**

bj  
hh

tr  
2ub  
sd

brushes

p

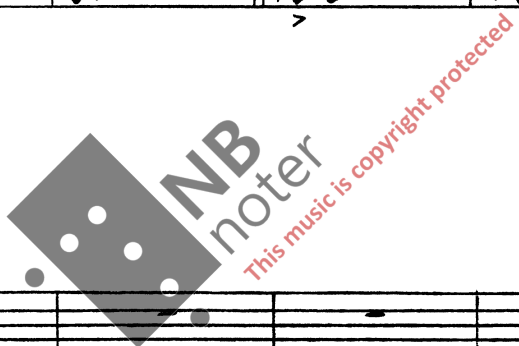
cb  
rt  
2tt

f

mar  
2tt  
bd

f

cast  
timb  
hh



101

bg  
hh

tr  
2wb  
sd

cb  
rt  
2tt

mar  
2tt  
bd

cast  
timb  
hh

*f*

*mf*

*f*

107

bg  
hh

tr  
2wb  
sd

cb  
rt  
2tt

mar  
2tt  
bd

cast  
timb  
hh

**G**

*f* *mf* *f* *mf*

*f* *mf*

*f* *mf*

Rim shot (R.S.) (R.S.) (R.S.)

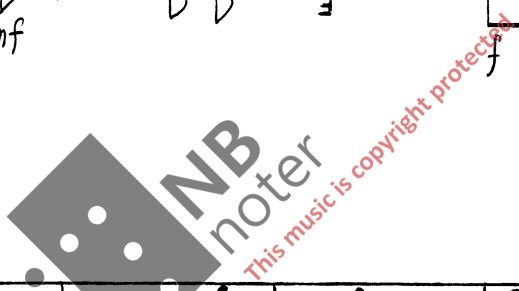
*f* *mf* *f* *mf*

- 8 -

Handwritten musical score for measures 113-118. The score includes staves for various instruments: bg hh, tr 2wb sd, cb rt 2tt, mar 2tt bd, and cast timb hh. Dynamics include *f*, *mf*, and *f* with accents. There are triplets and slurs in the notation.

113

*f* *mf* *f* *mf*



Handwritten musical score for measures 119-124. The score includes staves for various instruments: bg hh, tr 2wb sd, cb rt 2tt, mar 2tt bd, and cast timb hh. Dynamics include *f*, *mf*, and *sfz*. There are triplets and slurs in the notation.

119

*f* *mf* *sfz*

H

cadenza II

perc. 1  
bg  
hh  
pp

perc. 3  
cb  
rt  
2tt  
p  
125  
mf

132  
mf

139  
mf

146  
f

153  
ff  
p  
subito

160

167  
mf  
f

174  
mf  
f  
mf  
f

181  
mf

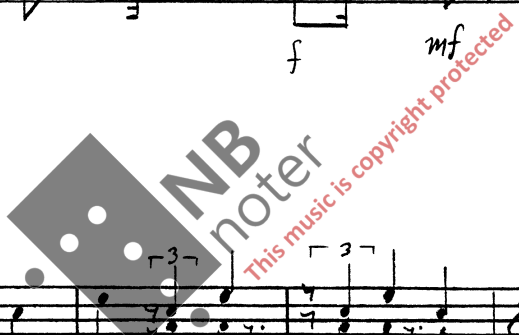




bg  
 hh  
 tr  
 2wb  
 sd  
 cb  
 rt  
 2tt  
 mar  
 2tt  
 bd  
 cast  
 timb  
 hh

f mf f mf f mf  
 f mf f mf

201



bg  
 hh  
 tr  
 2wb  
 sd  
 cb  
 rt  
 2tt  
 mar  
 2tt  
 bd  
 cast  
 timb  
 hh

f mf f mf sfz p  
 p f sfz p  
 f mf sfz p

207



