

# « METAMORFOSER »

Björn Korsan Hoemmes

Winds, Keyboard ad.lib. and Percussion

## Nomenclature:

- 2 Flutes
- 1 Oboe
- 1 Clarinet in Eb
- 6 Clarinets in Bb
- 1 Clarinet basso
- 1 Bassoon
- 2 Alto-saxes in Eb
- 1 Tenor-sax in Bb
- 1 Baritone-sax in Eb
- 1 Lead trumpet in Bb
- 2 Cornets in Bb
- 2 Trumpets in Bb
- 4 French horns in F
- 2 Tenor trombones
- 1 Bass trombone
- 1 Baritone
- 2 Tubi

Keyboard (organ) ad. lib.

Percussion: 4 players.

Snare drum

Big drum

Pair cymbal

Cymbal suspended

Big tamtam

Triangolo

Stairbells

4 Timpani

# METAMORFOSER

Björn Korsan Joemsnes

1. w/picc.  
2 Flutes  
1 Oboe  
1 Clar. in E $\flat$   
1 Clar. in B $\flat$   
1 Bass-cl. in B $\flat$   
1 Bassoon

$\text{♩} = 80$

2 Alto-sax. in E $\flat$   
1 Ten-sax in B $\flat$   
1 Baritone-sax in E $\flat$

Lead Trump. in B $\flat$   
2 Cornets in B $\flat$   
2 Trumpets in B $\flat$   
4 Horns in F  
2 Trombones in C  
Bass-tromb. in C  
Baritone  
2 Tubas

Organ

Percussion

Timp.  
Cymb. sup. d.  
Sn. dr.  
tam-tam l.v.  
Gri. Cassa

6/4

2/4

Fl. *mp* *mf* *ff*

Ob. *mp* *mf* *ff*

E♭ Clar. *mp* *mf* *ff*

B♭ Clar. *mp* *mf* *ff*

Bass-Cl. *mp* *mf* *ff*

Bassoon *mp* *mf* *ff*

2/4

2/4

Saxes *legato* *ff* *f*

2/4

2/4

Trp. *ff* *f*

Horns *ff* *f*

Tromb. *ff* *f*

Bar. *ff* *f*

Tub. *ff* *f*

2/4

2/4

Organ *u.m.* *ff* *f*

2/4

2/4

Perc. *Cymb. susp.*

Fl. *f* *mf*

Ob. *f* *mf*

E♭ Clar. *f* *mf*

B♭ Clar. *f* *mf*

Bass Cl. *f* *mf*

Bassoon *ff* *f*

12 **2/4**

Sax. *ff* *f*

12 **2/4**

H. Trp. *ff* *f*

Corn. *ff* *f*

Trp. *ff* *f*

Horns *ff* *f*

Tromb. *ff* *f*

Bar. *ff* *f*

Tub. *ff* *f*

12 **2/4**

Organ *ff* *f*

12 **2/4**

Peru. *mf* *f*

Pair Cymb. *mf* *f*

Timp. *mf* *f*

Gn. Cassa *mp*

tam-tam l.v.

Fl. *f*

Ob. *f*

E♭-u. *f*

B♭-u. *f*

Bass-u. *f*

Basson *f*

Saxen *f*

B. Trp. *f*

Corn *f*

Trp. *f*

Horns *f*

Trb. *f*

Ban. *f*

Tub. *f*

*legato*

Organo *f*

Perc. *f*

Timp. *mf*

Gr. Cassa *f*

Gr. Cassa *mf*

Gr. Cassa *mf*

Pairlymba *f*

Sauca *f*

b.v.

Fl.

Ob.

E Clar.

B♭ Clar.

Bass Clar.

Bassoon

Saxes

2. Trp.

Cor.

Trp.

Horns

Trb.

Bar.

Tub.

Organ

Perc.

tam-tam

Gr. cassa

Timp.

Sn. dr.

Pad. Cym.

Fl. *80a*

Ob.

E♭-u.

B♭-u.

Bass-u.

Bassoon

26

Saxes

26

H. Trp.

Cor.

Trp.

Horns

Trb.

Bar.

Tub.

26

Organ

26

perc.

Sn. dr.

Gr. Cassa.

tam-tam l.v.

Pair Cymb. > l.v.

Timp.

26

Fl. *f* *f* *f* *f*

Ob. *f* *f* *f* *f*

E♭-u. *f* *f* *f* *f*

B♭-u. *f* *f* *f* *f*

Bass-u. *f* *f* *f* *f*

Bassoon *f* *f* *f* *f*

Truba *f* *f* *f* *f*

Tron *f* *f* *f* *f*

Org. *f* *f* *f* *f*

Perk. *f* *f* *f* *f*

Saxess *f* *f* *f* *f*

h. Sop. *f* *f* *f* *f*

Con. *f* *f* *f* *f*

Trp. *f* *f* *f* *f*

Horns *f* *f* *f* *f*

Trb. *f* *f* *f* *f*

Bar. *f* *f* *f* *f*

Tub. *f* *f* *f* *f*

Org. *f* *f* *f* *f*

Perk. *f* *f* *f* *f*

Perk. *f* *f* *f* *f*

tam tam *f* *f* *f* *f*

l.v. *f* *f* *f* *f*

Pair Cymb. *f* *f* *f* *f*

lv. *f* *f* *f* *f*

Sn. dr. *f* *f* *f* *f*

Timp. *f* *f* *f* *f*

Gr. Cassa *f* *f* *f* *f*



34

Musical score for Flute, Oboe, Eb Clarinet, Bass Clarinet, Bassoon, and Bass Drum.

**Fl.**: Treble clef, complex melodic line with trills and sixteenth notes.

**Ob.**: Treble clef, melodic line with dynamics *f* and *subp.*

**Eb-Cl.**: Bass clef, melodic line with triplets and dynamics *f*.

**Bb-Cl.**: Bass clef, melodic line with triplets and dynamics *f*.

**Bass-Cl.**: Bass clef, melodic line with dynamics *f*.

**Bassoon**: Bass clef, melodic line with dynamics *f*.

**Bass Dr.**: Bass clef, melodic line with dynamics *f*.

Dynamic markings: *f*, *subp.*, *I<sup>o</sup>*, *subp.*, *subp.*, *subp. (legato)*, *subp. (legato)*

34

Musical score for Saxophone section.

**Saxes**: Treble clef, melodic line with dynamics *f*.

Dynamic markings: *f*, *I<sup>o</sup>*, *subp.*, *subp.*

34

Musical score for Trumpets, Cornets, Trombones, Baritone, and Tuba.

**1. Trp.**: Treble clef, melodic line with dynamics *f*.

**Corn.**: Treble clef, melodic line with dynamics *f*.

**2. Trp.**: Treble clef, melodic line with dynamics *f*.

**3. Trp.**: Treble clef, melodic line with dynamics *f*.

**Toms**: Treble clef, melodic line with dynamics *f*.

**Tro.**: Bass clef, melodic line with dynamics *f*.

**Bar.**: Bass clef, melodic line with dynamics *f*.

**Tub.**: Bass clef, melodic line with dynamics *f*.

Dynamic markings: *f*, *subp.*, *I<sup>o</sup>*, *subp.*

34

Musical score for Organ and Percussion.

**Organ**: Treble clef, melodic line with dynamics *f*.

**Perc.**: Bass clef, melodic line with dynamics *f*.

Dynamic markings: *f*, *I<sup>o</sup>*, *subp.*, *subp.*

**tam-tam**: *tr* markings.

**Triangl.**: *tr* markings.

Fl. *mp*

ob. *mp*

E♭-Cl. *mp*

B♭-Cl. *mp*

Bass-Cl. *mp*

Bassoon *mp*

Saxos *mp*

d. Trp. *mp*

Cor. *mp*

Trp. *mp*

Horns *mp*

Trb. *mp*

Bar. *mp*

Tub. *mp*

Organ *p*

Perc. *p*

Cymb. susp. *p*



42

Fl.

Ob.

E♭-Cl.

B♭-Cl.

Bassoon

Detailed description: This system contains the woodwind parts. The Flute (Fl.) and Oboe (Ob.) parts are in treble clef and play a melodic line with some grace notes. The Clarinet parts (E♭-Cl. and B♭-Cl.) are in treble clef and play a more rhythmic, eighth-note pattern. The Bassoon part is in bass clef and plays a simple eighth-note accompaniment.

42

Saxo.

Detailed description: This system contains the Saxophone part. The upper staff is in treble clef and plays a melodic line. The lower staff is in bass clef and plays a simple accompaniment.

42

Dr. Trp.

Com.

Trp.

Horns

Trb.

Ban.

Tub.

Detailed description: This system contains the brass parts. The Trumpet (Trp.) and Trombone (Trb.) parts are in treble clef and play a melodic line. The Horns part is in bass clef and plays a simple accompaniment. The Tuba (Tub.) part is in bass clef and plays a simple accompaniment. The Drum (Dr. Trp.) part is in bass clef and plays a simple accompaniment. The Cornet (Com.) part is in treble clef and plays a simple accompaniment. The Banjo (Ban.) part is in bass clef and plays a simple accompaniment.

42

Organ

Detailed description: This system contains the Organ part. The upper staff is in treble clef and plays a melodic line. The lower staff is in bass clef and plays a simple accompaniment.

42

Cymb. susp p

Per.

Detailed description: This system contains the Percussion parts. The Cymbal (Cymb. susp p) part is in bass clef and plays a simple accompaniment. The Snare (Per.) part is in bass clef and plays a simple accompaniment.

Fl. *p*

Ob. *p*

E♭-Cl. *p*

B♭-Cl. *p*

Bass-Cl. *p*

Bassoon *p*

Saxes *mf*

H. Trp. *mf*

Cor. *mf*

Trp. *mf*

Horns *mf*

Tub. *mf*

Bar. *mf*

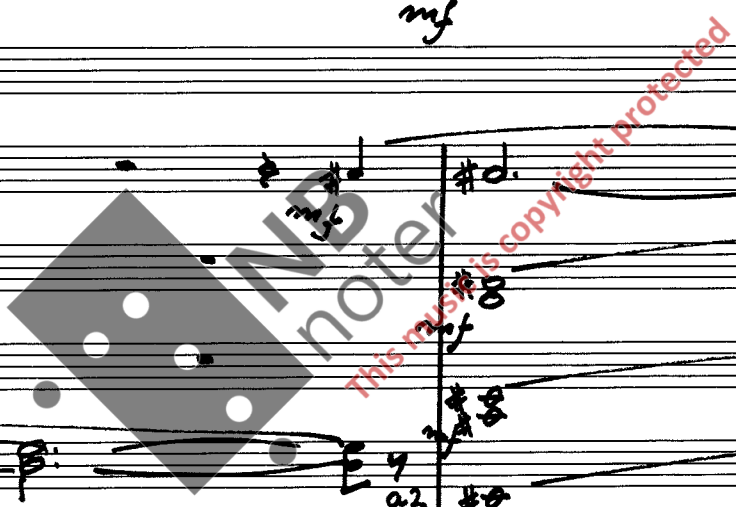
Tub. *mf*

Organs *mp*

Perl. *pp*

Cymb. sup. *pp*

Timp. *mf*



50

Fl. *mp*

Ob. *mp*

E♭-Cl. *mp*

B♭-Cl. *mp*

Bass-Cl. *mp*

Bassoon *mp*

Sub. p

I<sup>o</sup>

Sub. p

Sub. p

Sub. p

Sub. p

Saxes

Sub. p

Sub. p

50

50

h. Trp. *mp*

Cor. *a2*

Trp. *a2*

Toms *mf*

Trb. *mf*

Bar. *mf*

Tub. *mf*

Sub. p

Sub. p

Organ

50

Perc. *mf*

Cymb. supra *mf*

50



Fl.

Ob.

E♭-Cl.

B♭-Cl.

Bass-Cl.

Bassoon

Saxes

H. Trp.

Corn.

Trp.

Horns

Trb.

Bar.

Tub.

Organ

Perc.

*Solo*

*mp*

*mp*

*3*

*5*

*A*

*l.v.*

*l.v.*

*l.v.*

*l.v.*

*This music is copyright protected*

56

Fl. *mp* *mf*

Ob. *p* *mp* *mf*

E♭-Cl. *A2*

B♭-Cl. *mp* *mf*

Bass Cl. *p* *mf*

Bassoon *p* *mf*

56

Saxes *p* *mf*

56

L. Trp. *mp* *pp* *mf*

Cor. *mf*

Trp. *mf*

Horns *a2* *mf* *f*

Tub. *mf*

Bar. *mf*

Tab. *mf*

56

Organ *mf*

56

Perc. *Cymb. Susp.* *pp* *mf*



Fl.

Ob.

E♭-Cl.

B♭-Cl.

Bass-Cl.

Bassoon

Saxes

L. Trp.

Com.

Trp.

Horns

Trb.

Bar.

Tub.

Organ

Perc.

tam-tam

mp

very Slow trem.



64

Fl. *f*

ob. *f*

E♭-Cl.

B♭-Cb.

Bass Cl.

Bassoon

64

Saxen

64

1. Trp.

Cor.

Trp.

Horns

Tub.

Bar.

Tub.

64

Organ

64

Per. *mp* *mf* *f*

*tam-tam* *l.v.*

*Cowbells*

Fl.

Ob.

E<sup>b</sup>-Cl.

B<sup>b</sup>-Cl.

Bass-Cl.

Bassoon

Saxes

H. Trp.

Corn.

Trp.

Horns

Trb.

Ban.

Tub.

Cup mute Solo

Organ

l.m.

Per.

Gr. Cas.

Sn. dr.

\$al⊕

Fl. *tr* *mp* *tr* *pp* *ff*

Ob. *mp* *tr* *pp* *ff*

E♭-Cb. *mp* *tr* *pp* *ff*

B♭-Cb. *f* *mf* *tr* *pp* *ff*

Bass-Cb. *f* *mf* *tr* *pp* *ff*

Bassoon *mp* *tr* *pp* *ff*

\$al⊕

Saxen *mf* *ff*

\$al⊕

1. Trp. *mp* *3* *ff*

Cor. *mp* *ff*

Trp. *mp* *ff*

Horns *mf* *ff*

Tub. *mf* *ff*

Bar. *mf* *ff*

Tub. *mf* *ff*

*loco*

\$al⊕

Organ *f*

\$al⊕

Sn.dr. *pp* *mp* *ff*

Per. *pp* *mp* *ff*

Gr.c. *pp* *mp* *ff*

*lento*

# CODA

Fl. *fp* *ppp*

Ob. *fp* *ppp*

E♭-Cl. *fp* *ppp*

B♭-Cl. *fp* *ppp*

Bass-Cl. *fp* *ppp*

Bassoon *fp* *ppp*

# CODA

Saxes *f* *ppp*

# CODA

A. Trp *fp* *ppp*

Corn. *fp* *ppp*

Trp. *fp* *ppp*

Horns *fp* *ppp*

Trb. *f* *ppp*

Bar. *f* *ppp*

Tub. *f* *ppp*

# CODA

Organ *f* *ppp*

# CODA

Perc. *f* *ppp*

Pair Cymb. *f* *ppp*

Sn. dr. *mp*

Gr. Cassa *f* *ppp*

P. cymb. *f* *ppp*

Sn. dr. *mp*

Gr. Cassa *f* *ppp*

tam-tam *f* *ppp*

L.v.

FINE